

Enforcement and Compliance: Past, Present, and Future

**Bryan Price
Federal Motor Carrier Safety
Administration**

- Surface Transportation Assistance Act of 1982 established Motor Carrier Safety Assistance Program (**MCSAP**)
 - Grant funding for State commercial vehicle safety programs
 - Approximately 2 million annual roadside inspections of commercial motor vehicles conducted by the late 1990s
- Performance and Registration Information Systems Management (PRISM) initiated in late 90s
 - Enforcement partnership with State truck licensing agencies

- **Motor Carrier Reviews/Audits**
 - Safety Reviews (SRs) in late 80s and early 90s
 - Limited sampling of carrier compliance records
 - Agency goal was to assign a safety rating to all unrated motor carriers
 - No longer conducted
 - Compliance Reviews (CRs) up to present day
 - Primary enforcement and compliance assessment tool

- **Carrier Selection for Reviews/Audits**

- Up to 1997 based primarily on descriptive factors such as carrier size and commodity transported and time since last review
- 1997-2010: **Performance-Based** Safety Status (SafeStat) Measurement System
 - Four Safety Evaluation Areas (SEAs): Accident, Driver, Vehicle, Safety Management
 - Crashes, Out-of-Service violations from roadside inspections, prior CR violations

Enforcement and Compliance: Present

FMCSA
*Core
Principles*



**Raise the safety bar
to enter the industry**



**Require carriers to
maintain safety
standards**



**Remove bad carriers off
roads and highways**



- MCSAP and roadside inspection program has grown to 3.5 million annual inspections
 - New Entrant Safety Assurance Program
 - Hazardous Materials Safety Permit Program
 - Motorcoach Program
 - MAP 21
 - Compliance, Safety, Accountability (CSA) Program
 - Cornerstone of FMCSA's Enforcement and Compliance Program

Enforcement and Compliance: Present

CSA – Three Major Elements

1. **New Safety Measurement System (SMS) - System**

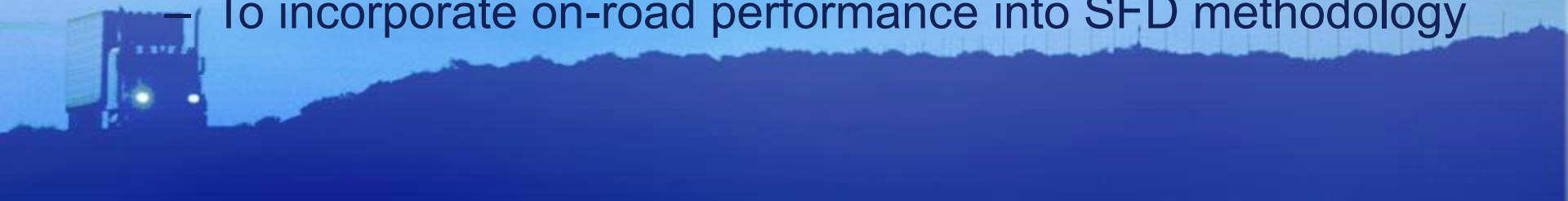
- Better targets carriers for Agency interventions

2. **Broader array of interventions - Process**

- Includes warning letters and focused on and off-site investigations to augment the full investigations

3. **Planned revisions to Safety Fitness Determination (SFD) Regulations - Rule**

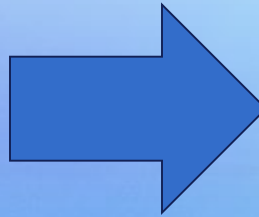
- To incorporate on-road performance into SFD methodology



Enforcement and Compliance: Present CSA Safety Measurement System (SMS)

OLD

**SafeStat Safety
Evaluation Areas (SEAs)**



NEW

**Behavior Analysis and Safety
Improvement Categories (BASICS)**



Enforcement and Compliance: Present CSA Interventions

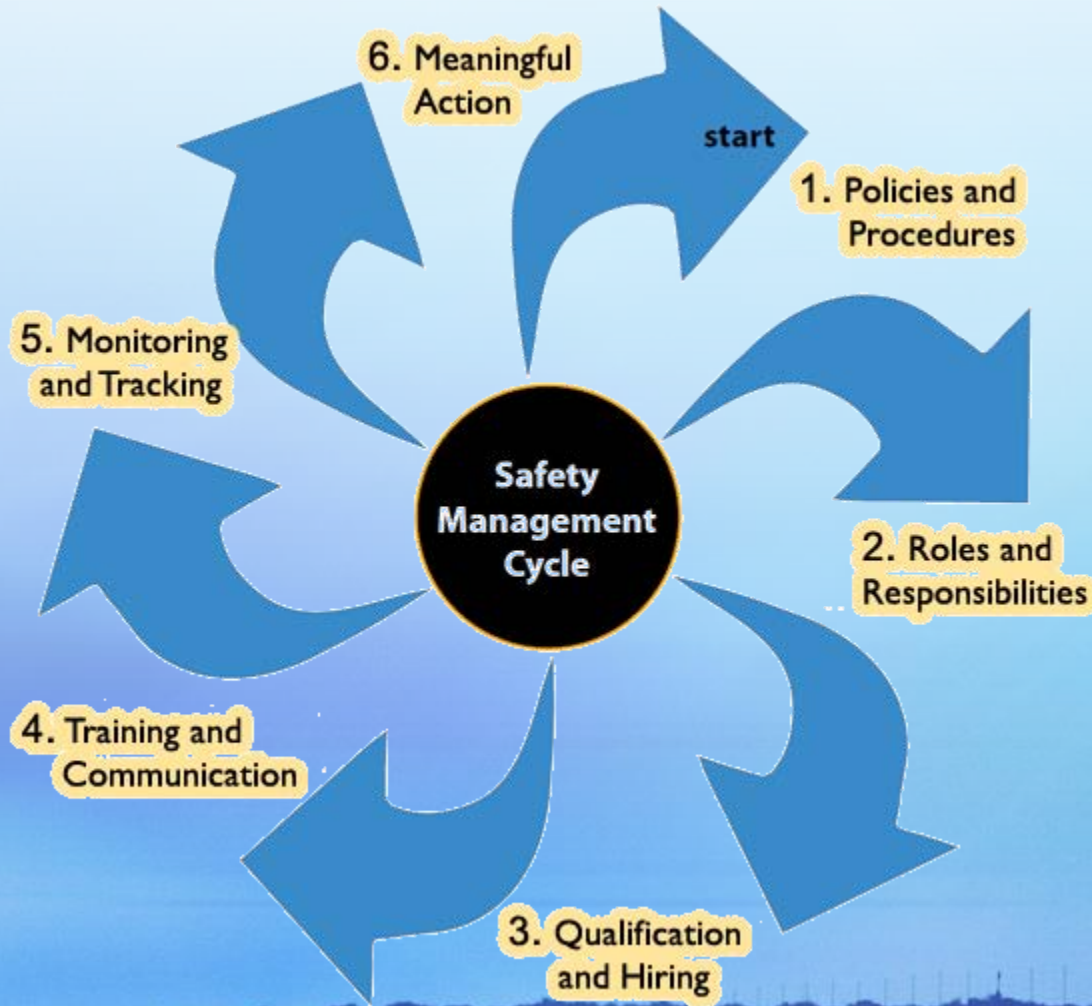
New intervention tools reach more carriers and influence safety compliance earlier

Warning Letters

Investigations

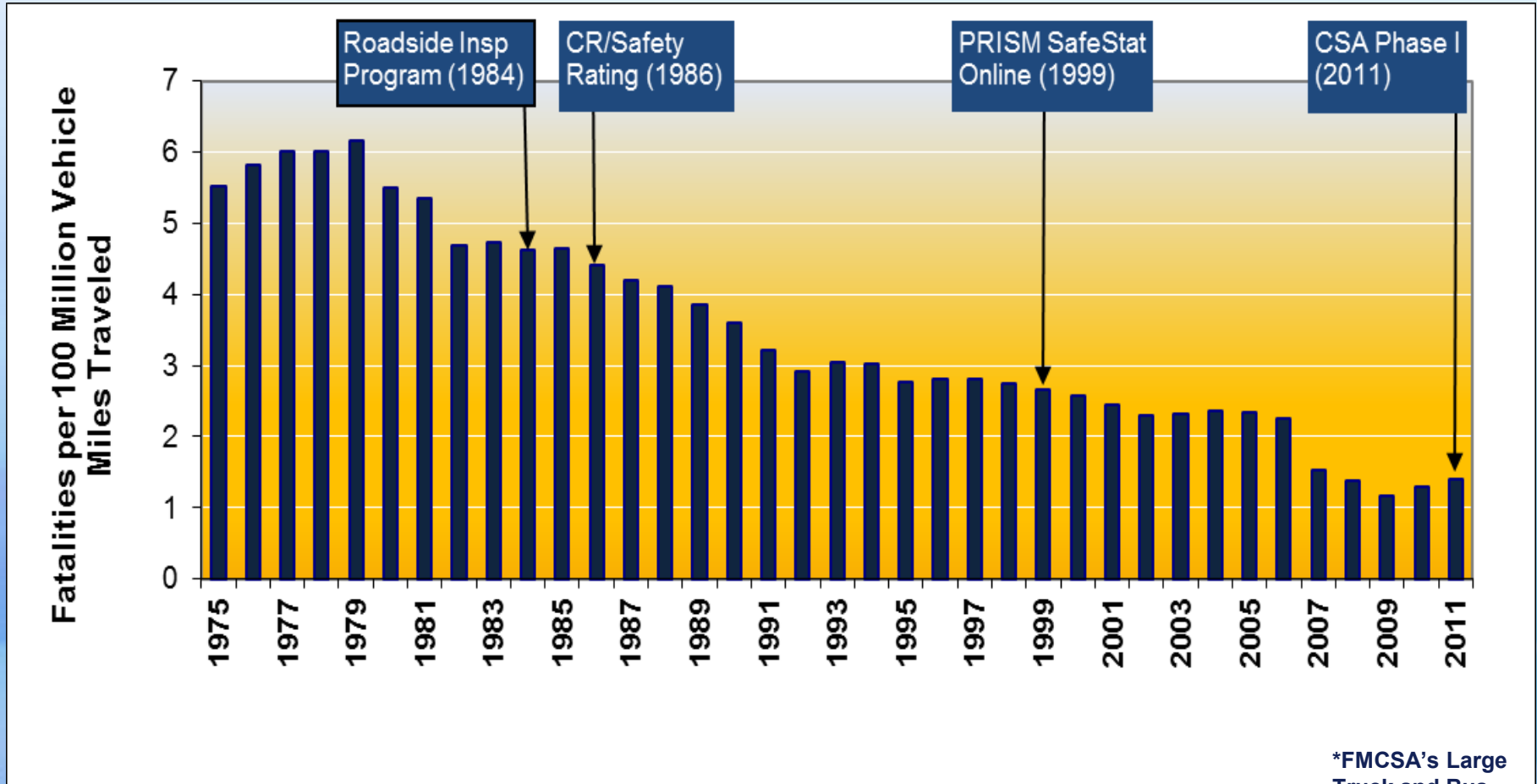
- Offsite Investigations
- Onsite Investigations - Focused
- Onsite Investigations – Comprehensive
- Safety Management Cycle as part of all investigation

Enforcement and Compliance: Present CSA Safety Management Cycle



Enforcement and Compliance: Impacts

Rate of Commercial Motor Vehicle Fatalities



*FMCSA's Large
Truck and Bus
Crash Facts 2011

Enforcement and Compliance: Future

- Wireless Roadside Inspection Program (WRI)



- Further research and development of the carrier SMS to improve the methodology and optimize application of intervention resources
- Unified Registration System (URS)
- Safety Fitness Determination (SFD) proposed rule