

Implementation of the Wyoming Rural Road Safety Program



Khaled Ksaibati, Ph.D., P.E.

Department of Civil and Architectural Engineering

Bart Evans

Wyoming Technology Transfer Center

University of Wyoming

Laramie, Wyoming

November 2011

Acknowledgement

Funding for this study was provided by the Wyoming DOT and the Mountain-Plains Consortium (MPC). The authors thank Matt Carlson, WYDOT's Safety Office, Martin Kidner, WYDOT's Planning Office, FHWA, and Wyoming Counties' Road and Bridge Departments for their support and assistance.

Disclaimer

The contents of this report reflect the view of the authors, who are responsible for the facts and the accuracy of the information presented. This document is disseminated under the sponsorship of the Department of Transportation, University Transportation Centers Program, in the interest of information exchange. The U.S. Government assumes no liability for the contents or use thereof.

North Dakota State University does not discriminate on the basis of age, color, disability, gender expression/identity, genetic information, marital status, national origin, public assistance status, sex, sexual orientation, status as a U.S. veteran, race or religion. Direct inquiries to the Vice President for Equity, Diversity and Global Outreach, 205 Old Main, (701)231-7708.

ABSTRACT

SAFETEA-LU contains language indicating that State Department of Transportation (DOTs) will be required to address safety on local and rural roads. It is important for state, county, and city officials to cooperate in producing a comprehensive safety plan to improve statewide safety. This legislation provides an opportunity to implement a more cohesive and comprehensive approach to local road safety in Wyoming. The Wyoming Local Technical Assistant Program (LTAP) coordinated an effort in cooperation with the Wyoming Department of Transportation (WYDOT), Wyoming Division of Federal Highway Administration (FHWA), as well as Wyoming counties and cities to identify low-cost safety improvements on high-risk rural roads in Wyoming.

Crash data was obtained from the WYDOT CARE program which includes all reported crashes on all rural county roads. Wyoming rural roads have relatively small numbers of crashes. Therefore, longer analysis periods were needed to identify high-risk locations. The Wyoming Rural Road Safety Program (WRRSP) obtained data over a 10-year period to conduct crash data analysis. The combined crash data and field safety evaluation procedure will result in the identification of high crash locations where specific safety countermeasures are recommended. The proposed benefit/cost analysis will insure that only cost-effective measures will be selected for funding.

WYDOT approved the WRRSP and recommended statewide implementation in 2008. In addition, WYDOT and the FHWA Division office approved the WRRSP for eligibility to receive funding from the High Risk Rural Road (HRRR) Program.

Three Wyoming counties were included in the initial study, and nine additional counties have participated since the initial study. Three additional counties have already requested help to implement this program in the near future. The statewide implementation was launched in 2009. Safety projects funded by the WRRSP included: Installation of advance warning signs, delineators, and guard railing, pavement striping; widening of shoulders; relocation of mail boxes from inside of right of way (ROW); installation of culvert and cattleguard extensions; relocation of fences, and improving horizontal and vertical alignments. A statewide sign program was also implemented with the WRRSP. This report summarizes the implementation of the WRRSP in Wyoming.

TABLE OF CONTENTS

1. INTRODUCTION	1
2. IMPLEMENTATION OF WRRSP	5
3. IMPLEMENTATION OF THE STATEWIDE SIGN PROGRAM	11
4. CONCLUSIONS.....	13
REFERENCES.....	15
APPENDIX A.....	17
A-1. Albany County	18
A-2. Big Horn County	19
A-3. Carbon County	20
A-4. Crook County	23
A-5. Fremont County	24
A-6. Goshen County	25
A-7. Johnson County	26
A-8. Laramie County	30
A-9. Lincoln County.....	34
A-10. Park County	41
A-11. Sheridan County	42
A-12. Weston County	43
APPENDIX B. Details for WRRSP Sign Program in Each County.....	45
Appendix B-1 Big Horn County High-risk Roads List	46
Appendix B-2 Big Horn County Sign Request Form.....	47
Appendix B-3 Campbell County High-risk Roads List.....	49
Appendix B-4 Campbell County Sign Request Form	53
Appendix B-5 Fremont County High-risk Roads List	54
Appendix B-6 Fremont County Sign Request Form	58
Appendix B-7 Hot Springs County High-risk Roads List.....	59
Appendix B-8 Hot Springs County Sign Request Form	60
Appendix B-9 Laramie County High-risk Roads List.....	61
Appendix B-10 Laramie County Sign Request Form	64
Appendix B-11 Sheridan County High-risk Roads List.....	65
Appendix B-12 Sheridan County Sign Request Form.....	67
Appendix B-13 Sublette County High-risk Roads List.....	68
Appendix B-14 Sublette County Sign Request Form.....	71
Appendix B-15 Sweetwater County High-risk Roads List	72
Appendix B-16 Sweetwater County Sign Request Form	75
Appendix B-17 Washakie County High-risk Roads List	77
Appendix B-18 Washakie County Sign Request Form	78
Appendix B-19 Weston County High-risk Roads List.....	79
Appendix B-20 Weston County Sign Request Form	80

LIST OF TABLES

Table 2.1 WRRSP Progress Report	7
Table 2.2 WRRSP Funding Progress Report	8
Table 2.3 Benefit Cost Ratio for Each County	9
Table 3.1 Road Sign Detail Report	11

LIST OF FIGURES

Figure 1.1 The Five-Step Process to Identify High-risk Rural Roads	2
Figure 2.1 Implementation of the WRRSP by Wyoming Counties	6

1. INTRODUCTION

Identifying high-risk rural road segments and their corresponding safety countermeasures is one of the most efficient and cost effective ways to improve highway safety. Finding methods to improve the safety of the nation's rural roadways is very important. Rural roads are critical links in the nation's transportation system, providing travel and commerce for the approximately 60 million people living in rural America (1). About 80 percent of the nation's roadway miles are rural; more than 58 percent of the total fatalities occur in rural areas and the fatality rate for rural areas (per 100 million vehicles miles of travel) is more than twice that of urban centers (2). However, many rural roads lack important safety features and experience serious traffic accidents at a rate far higher than other highways. Nationally, about 60 percent of traffic fatalities occur on rural highways (3).

To help counties identify high-risk rural locations and develop a strategy to obtain funding to reduce crashes on the riskiest segments, the LTAP Center has developed the Wyoming Rural Road Safety Program (WRRSP)—which was funded by Mountain-Plains Consortium (MPC) and the Wyoming Department of Transportation (WYDOT) in cooperation with the Federal Highway Administration (FHWA). Program guidance was provided by a Local Road Safety Advisory Group with representatives from WYDOT, the Wyoming Local Technical Assistance Program (LTAP), the Wyoming Association of County Engineers and Road Supervisors, the Wyoming Association of Municipalities, and FHWA.

The pilot phase of the research project involved data collection and participation from Carbon, Laramie, and Johnson counties. The data collected included historical crash data as well as field conditions. A five-step procedure, shown in Figure 1.1, was developed and applied in these counties. These five steps are:

1. Crash data analysis
2. Level I field evaluation
3. Combined ranking to identify potential high-risk locations based on steps 1 and 2
4. Level II field evaluation to identify countermeasures
5. Benefit/cost analysis

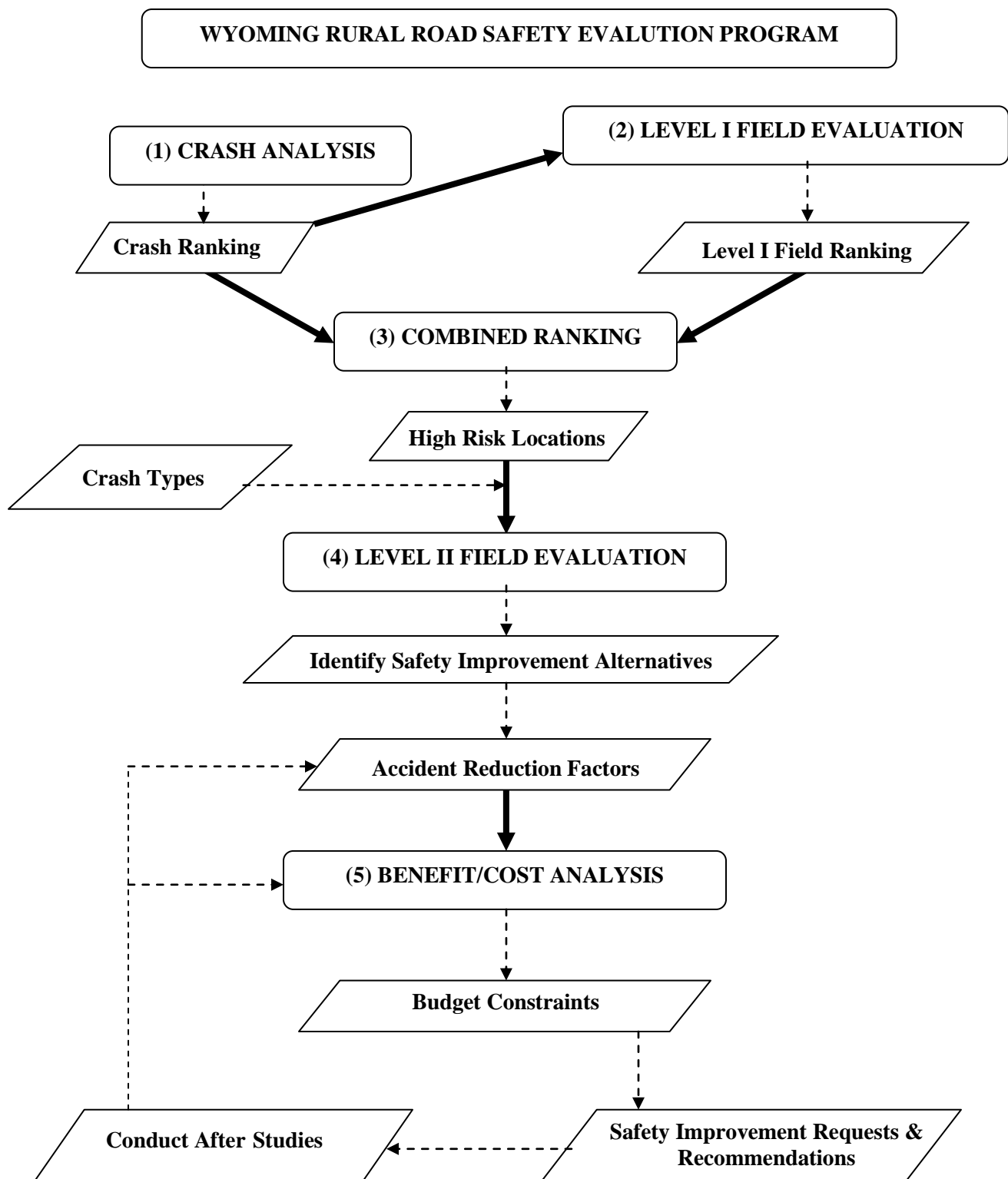


Figure 1.1 The Five-Step Process to Identify High-risk Rural Roads

Crash data were analyzed to identify high-risk segments with proportionately higher crashes during a 10-year analysis period. A Level I field evaluation was conducted to identify deficiencies in geometric conditions and shoulders as well as pavement markings and signage. Roadway segments were ranked on a scale from 0 to 10 in five risk categories based on the results of the field evaluation. The five categories are:

1. General
2. Intersection and Railroad Crossings
3. Signage and Pavement Markings
4. Fixed Objects and Clear Zones
5. Shoulder and ROW.

Combined rankings based on crash data and field evaluations were used to identify segments with the highest potential crash risks. A comprehensive analysis was then conducted on each high-risk segment. The objective of this evaluation was to identify low-cost safety countermeasures for segments identified as high-risk locations. A benefit/cost analysis was performed to help identify the most cost-effective safety measures. Two worksheets were developed to perform the benefit/cost analysis based on the estimated costs and the anticipated reduction in crashes. The first worksheet was designed for a single segment while the second one can be used to perform the analysis on multiple segments. After all the required information was entered, the worksheets automatically calculated the benefit and the benefit/cost ratio for each countermeasure and the combined value if multiple countermeasures are used. Higher benefit-to-cost ratios reflect more cost-effective countermeasures.

As a result of this successful pilot study, the Local Road Safety Advisory Group approved the WRRSP procedure as a means of improving safety on rural roads in Wyoming. Once a county has completed the five-step procedure, it has the necessary information to develop plans to fund safety improvements using the High Risk Rural Road Program or other funding sources. WYDOT is funding some of the counties' safety requests, providing the incentive for other Wyoming counties to establish their own local safety programs.

In this second phase of the project, MPC and WYDOT are facilitating implementation of the WRRSP on a statewide basis. The LTAP Center is providing technical help and training to counties interested in implementing the program. So far, the LTAP Center has helped half of the 23 counties in Wyoming to implement the WRRSP. Multiple low-cost safety projects have been approved for funding on roads with the highest risk levels. Currently, 20 safety improvement projects around the state have been funded. Eventually, all counties in the state are expected to follow the five-step procedure developed in this study to identify their high-risk rural road segments and safety countermeasures. Funding requests from all counties are ranked by the Wyoming Safety Management System Committee. In this way, the distribution of available funding will be optimized. The LTAP Center will do a follow-up study in three years on all of the improved sections to determine the effectiveness of the program in reducing crashes and fatalities. Three years is the minimum required wait time after installation of safety improvements to get meaningful results on benefits.

The methodology of the Wyoming Rural Road Safety Program (WRRSP) is described in detail elsewhere (MPC 09-215 and WYDOT FHWA-WY-09/064). This report will concentrate on summarizing the safety projects funded in 12 counties as a result of implementing the WRRSP.

2. IMPLEMENTATION OF WRRSP

The Wyoming LTAP has helped to implement the Wyoming Rural Safety Program (WRRSP) in 12 of the 23 counties in Wyoming, as shown in Figure 2.1. Nine out of the 12 counties have already submitted applications for low-cost safety improvements. There have been three rounds of funding advertised by WYDOT and the Wyoming LTAP. Five counties received funding for eight projects in round one and all of the projects are currently under construction. Round two resulted in funding for nine projects in three counties. The plans for four have been approved, while the remaining five are being prepared. Six counties submitted five proposals for funding in round three. The WYDOT safety office is currently reviewing these requests. Three additional counties are interested in participating in round four.

Table 2.1 shows which counties participated in each round of funding. It also shows the steps for each application from the completed application to the final payment. Table 2.2 shows the funding breakdown for the nine counties that have submitted applications and have been approved for funding. As shown in the table, \$1,624,947.00 has been approved for funding.

Table 2.3 shows the benefit to cost (B/C) ratios for each county based on step 5 of the WRRSP. The expected benefit for the three rounds of the WRRSP was \$21,023,047 with a total cost of \$1,624,692. The B/C ratio for all three rounds combined comes out to be 12.9.

Appendix A summarizes the WRRSP program implementation in 12 Wyoming counties. The appendix has a table for each county showing the selected high risk rural roads that were eligible for the WRRSP. The roads were selected as per the first three steps of the WRRSP. The appendix also gives a list of appropriate countermeasures/safety improvements that each county selected. The countermeasures/safety improvements were arrived at by using steps four and five of the WRRSP.

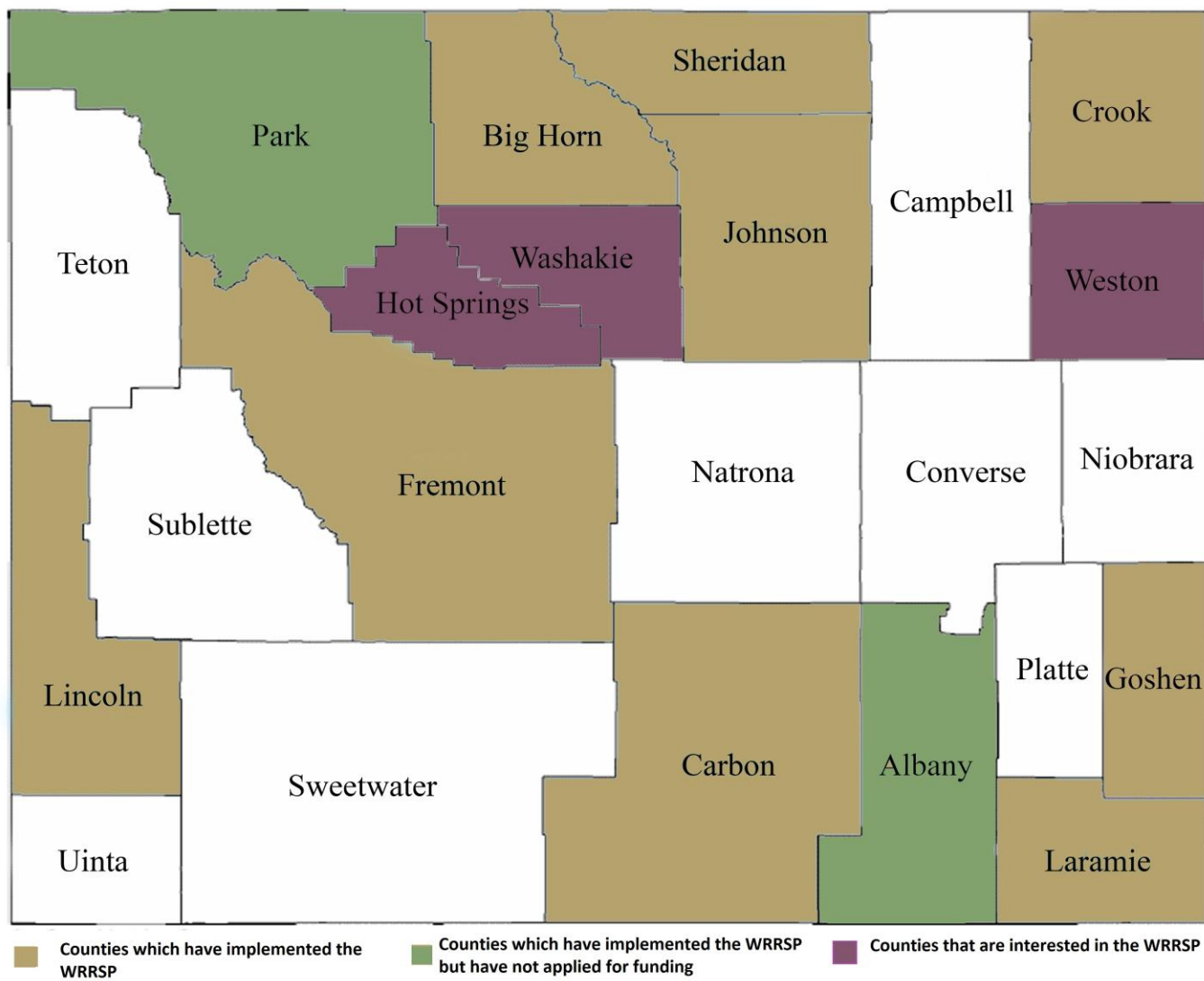


Figure 2.1 Implementation of the WRRSP by Wyoming Counties

Table 2.1 WRRSP Progress Report

	COUNTIES & #	Completed Application	COOPERATIVE AGREEMENT	R.O.W. Certificate	Environmental Clearance Letter By County To WYDOT	Environmental Clearance To FHWA From WYDOT	Public Interest Finding	Plans Submitted	Notice to Proceed	Inspection Date	Acceptance Certificate	Project Cost Reimbursement Statement	Final Payment
ROUND #1	Carbon CN06065	10/1/2008	7/23/2009	12/19/2009	8/25/2009	9/21/2009	N/A	1/28/2010	4/12/2010	3/1/2011			
	Johnson CN16022	10/1/2008	6/15/2009	9/18/2009	9/8/2009	9/21/2009	N/A	1/25/2010	4/12/2010				
	Laramie CN02090	10/1/2008	8/6/2009	11/3/2009	10/4/2009	9/21/2009	10/26/2009	10/10/2009	1/29/2010	1/10/2010	NA	NA	6/8/2010
	Lincoln CN12051	4/28/2009	9/18/2009	11/4/2009	9/9/2009	9/21/2009	N/A	1/27/2010	1/29/2010	3/28/2011		1/2/2010 PART	
	Lincoln CN12052	4/28/2009	9/18/2009	11/4/2009	9/9/2009	9/21/2009	N/A	1/27/2010	1/29/2010	3/28/2011	3/2/2011	3/2/2011	
	Lincoln CN12053	4/28/2009	9/18/2009	11/4/2009	9/9/2009	9/21/2009	N/A	1/27/2010	1/29/2010				
	Sheridan CN03033	5/5/2009	9/30/2009	1/26/2010	10/5/2009	10/15/2009	N/A	1/27/2010	4/12/2010				
	Sheridan CN03034	5/5/2009	9/30/2009	1/26/2010	10/5/2009	10/15/2009	N/A	1/27/2010	4/12/2010				
ROUND # 2	Big Horn CN09056	6/6/2009	8/5/2010	9/15/2009	8/5/210	2/23/2011	N/A						
	Fremont CN10095	1/12/2010	8/5/2010				N/A						
	Fremont CN10096	1/12/2010	8/5/2010				N/A						
	Lincoln CN12054	8/16/2010	9/5/2010	2/3/2010	10/29/2010	2/23/2011	N/A	2/1/2011	5/10/2011				
	Lincoln CN12055	8/16/2010	9/5/2010	2/3/2010	10/29/2010	2/23/2011	N/A	11/16/2010	5/10/2011				
	Lincoln CN12056	8/16/2010	9/5/2010	2/3/2010	10/29/2010	2/23/2011	N/A						
	Lincoln CN12057	8/16/2010	9/5/2010	2/3/2010	10/29/2010	2/23/2011	N/A	5/20/2011					
	Lincoln CN12058	8/16/2010	9/5/2010	2/3/2010	10/29/2010	2/23/2011	N/A	2/1/2011	5/10/2011				
	Lincoln CN12059	8/16/2010	9/5/2010	2/3/2010	10/29/2010	2/23/2011	N/A	11/16/2010	5/10/2011				
ROUND # 3	Big Horn CN????	8/26/2010											
	Carbon CN????	8/24/2010											
	Crook CN????	9/16/2010											
	Goshen CN????	9/7/2010											
	Lincoln CN????	8/16/210											
	Sheridan CN????	3/4/2011											
	SIGN PROGAM	Dec-10											
ROUND # 4	Hot Springs												
	Washakie												
	Weston												

Table 2.2 WRRSP Funding Progress Report

ROUND # 1	FUNDED AMOUNT	7/1/2011	ROUND # 2	FUNDED AMOUNT	7/1/2011	ROUND #3	7/1/2011	FUNDS REQUESTED
Carbon CN06065	\$55,145.00	Have Installed Culvert Extensions and Half of Signs, County will Finish Signs and Delineators	Big Horn CN09056	\$90,692.00	Working on Plans	Big Horn	Application in CN???	\$90,692.00
Johnson CN16022	\$51,000.00	Contractor finished installing Cattleguards. County plans to install signs and delineators, will put together a Public interest form.	Fremont CN10095	\$89,857.00	Working on Plans	Carbon	Application in CN???	\$27,200.00
Laramie CN02090	\$46,150.00	Finished I Need Final Payment form.	Fremont CN10096	\$90,490.00	Working on Plans	Crook	Application in CN???	\$74,464.00
Lincoln CN12051	\$94,745.00	Have Billed \$22,238.78	Lincoln CN12054	\$73,393.00	Plans In	Goshen	Application in CN???	\$100,000.00
Lincoln CN12052	\$58,638	Complete Invoice \$22,123.94	Lincoln CN12055	\$75,107.00	Plans In	Lincoln	Application in CN???	\$30,767.00
Lincoln CN12053	\$32,395.00	Have Not Started.	Lincoln CN12056	\$67,662.00	Working on Plans	Sheridan	Application in CN???	\$95,917.00
Sheridan CN03033	\$61,985.00	Started Construction	Lincoln CN12057	\$83,884.00	Plans In			
Sheridan CN03034	\$98,634.00	Started Construction	Lincoln CN12058	\$76,917.00	Plans In			
			Lincoln CN12059	\$59,213.00	Plans In			

Total	\$498,692.00
-------	--------------

Total	\$707,215.00
-------	--------------

Total	\$419,040.00
-------	--------------

GRAND TOTAL	\$1,624,947.00
--------------------	-----------------------

AS of 7-1-2011

Table 2.3 Benefit Cost Ratios for Each County

	County	Funded Amount	B/C Ratio	Approximate Benefit
Round #1	Carbon	\$55,145	70.0	\$3,858,496
	Johnson	\$51,000	8.0	\$407,490
	Laramie	\$46,150	28.1	\$1,296,354
	Lincoln	\$185,778	5.1	\$947,468
	Sheridan	\$160,619	5.7	\$910,710
Round #2	Big Horn	\$90,692	28.8	\$2,615,557
	Fremont	\$180,347	1.2	\$207,399
	Lincoln	\$436,176	12.2	\$5,338,794
Round #3	Big Horn	\$90,692	28.8	\$2,615,557
	Carbon	\$27,200	39.4	\$1,072,224
	Crook	\$74,464	13.4	\$999,307
	Goshen	\$100,000	1.6	\$160,000
	Lincoln	\$30,767	1.6	\$49,843
	Sheridan	\$95,917	5.7	\$543,849
	Totals	\$1,624,692		\$21,023,047

3. IMPLEMENTATION OF THE STATEWIDE SIGN PROGRAM

A statewide sign program has also been implemented as part of the WRRSP initiative. The LTAP Center provided each county with a list of eligible roads where a significant number of crashes took place between 2000 and 2009. These roads are high-risk locations in each county. The list was obtained from WYDOT crash data, as explained in step one of the WRRSP and then the crashes were based on Equivalent Property Damage Only (EPDO) weighting factors (see the EPDO explanation below). The statewide sign program provided advance warning signs for high-risk rural roads in locations where signs have not previously existed or where enhancement would be beneficial. Funding for the signs and posts were provided from the WRRSP. The counties are responsible for identifying the quantity and locations, and for the installation of the signs. As shown in Table 3.1, 10 counties participated in the program, for a total of 136 roads, 1,812 signs, and 1,595 sign posts. A total of 123 different advance warning signs were requested by the counties.

Table 3.1 Road Sign Detail Report

ROAD SIGN PROGRAM (RSP)			
REQUEST FORM			
COUNTY	# SIGNS	# POSTS	# ROADS
Big Horn	471	444	22
Campbell	494	404	33
Fremont	123	123	6
Hot Springs	50	49	8
Laramie	76	76	19
Sheridan	63	56	10
Sublette	7	7	4
Sweetwater	250	220	31
Washakie	34	22	3
Weston	244	194	12
TOTAL	1812	1595	136

Appendix B summarizes the 10 counties' sign request forms, which shows the quantity, type, and size, as well as the quantity and type of posts. Multiple tables in Appendix B list the eligible roads in each of the 10 participating counties. The tables also show the crash locations, severity types, the EPDO, and the number of signs for each road.

The EPDO is a performance measure where weighting factors relative to PDO crashes are assigned by severity types to develop a single equivalent combined frequency. The EPDO value was determined for this study utilizing present comprehensive crash cost values from the 2010 Highway Safety Manual for five severity types (HSM reference). Because Wyoming roadways have a low number of crashes, typical crash performance measures are more sensitive to fatal crashes and have the potential of being over-emphasized. To avoid this situation, WYDOT recently started combining four of the severity categories defined in Equation 1 (K, A, B, and C) into two categories: critical and serious. Critical crashes combine the K and A crash severity categories, and serious crashes combine the B and C severity categories.

To get appropriate values for the critical and serious crash categories, they were weighted again by the number of crashes in Wyoming for each category. The 10-year crash total on all Wyoming roadways was then determined for each severity category recognized in the Highway Safety Manual. The combined severity categories were weighted against the Wyoming 10-year crash totals to establish a comprehensive crash cost by severity type for Wyoming.

Equation 1 is the EPDO formula utilized for the data analysis.

$$\text{EPDO} = 9*(A+K) + 3.5*(B+C) + \text{PDO} \quad (\text{Equation 1})$$

where:

EPDO:	Equivalent property damage only
K:	Number of fatal crashes
A:	Number of A injury crashes (incapacitating injuries that will prevent normal activities for more than 24 hours)
B:	Number of B injury crashes (non-incapacitating injuries that will not prevent normal activities for more than 24 hours)
C:	Number of C injury crashes (complaint of pain or momentary unconsciousness), and
PDO:	Property Damage Only Crashes

4. CONCLUSIONS

The methodology developed in this project has been presented nationally at the Transportation Research Board Annual Meeting and the National LTAP Association Annual Meeting. In addition, workshops and presentations have been given in Wyoming and throughout the broader Mountain-Plains region. Other states can benefit from this procedure when they are considering the distribution of their high-risk rural road funding. North Dakota has already initiated a study similar to WRRSP. This program has made \$1.5 million available for low-cost safety improvements for local governments in the State of Wyoming. In addition, the program will provide a steady stream of funding for safety improvements on local roads in the future. Providing local governments with a potential funding source for safety improvements is very important in insuring that safety is considered at the local level.

As part of the WRRSP, a statewide sign program for local governments is being implemented. Ten counties in the state have submitted requests for signs at high-risk locations. More than 1,800 signs will be purchased by WYDOT and then distributed to counties for installation to provide advanced warning to the driving public at high crash locations. The Wyoming LTAP Center will conduct a follow-up study to quantify the effectiveness of all of these improvements.

The program has truly been a success story, showing how Wyoming local governments can work closely with WYDOT and FHWA to improve the safety of rural roads across the state. For the first time in the state of Wyoming, local governments can apply for safety funding by following a systematic procedure.

REFERENCES

1. The Road Information Program (TRIP). 2005. "Growing Traffic in Rural America: Safety, Mobility and Economic Challenges in America's Heartland." Washington, DC. www.tripnet.org
2. US Department of Transportation (USDOT). 2006. "US Department of Transportation Rural Transportation Initiative." Washington, DC. www.ntl.bts.gov/ruraltransport/index.html
3. University of Minnesota: Center for Excellence in Rural Safety "2007 Rural Safety Summer Institute." Minneapolis, MN. www.ruralsafety.unm.edu
4. Ksaibati, K., Zhong, C., and Evans, B., 2009 (MPC Report No. 09-215), Wyoming Rural Road Safety Program.
5. Ksaibati, K., Zhong, C., and Evans, B., 2009 FHWA-WY-09/06F "WRRSP: Wyoming Rural Road Safety Program."

APPENDIX A.

DETAILS FOR WRRSP IMPLEMENTATION IN EACH COUNTY

A-1. Albany County

The WRRSP has been implemented in Albany County and 12 high-risk locations have been identified as shown in Table A-1.1. Albany County is working on obtaining the right-of-way certificates for their roads. The county will submit a request for funding after securing the required documents.

Several roads can be selected for the implementation of the WRRSP, after Albany County obtains the right-of-way certificates for their roads.

Table A-1.1 Selected high-risk rural roads in Albany County

Road #	Road Name
17	Roger Canyon Road-U
21	Fort Sanders Road (Blackfoot Street)-U
22	Howe Road (Quarry)
34	Sand Creek Road-U
45	Lake Hattie Road
47	Fox Creed Road
55	Welsh Lane-U
57	Dutton Creek Road
210	Soldier Springs Road-U
422	Pahlow Lane
424	Hanson Lane
522	Curtis Street West (stockyards)-U

A-2. Big Horn County

Big Horn County had 14 roads rated as high-risk locations, as shown in Table A-2.1. The county selected one road from the combined ranking for implementation of the WRRSP: Sand Hill Road #5. The Wyoming Transportation Commission approved the recommendations of the Safety Management System projects sub-committee at their regularly scheduled meeting. The federal project number is HRRR 0.00 CN09056. The county is currently working on construction plans.

Big Horn County also submitted a second application for the WRRSP for the same road, Sand Hill Road #5. The request for funding is under review.

Big Horn County's application for safety improvements on Sand Hill Road #5 consists of performing some corrective excavation work to help flatten out two major curves and bring the super elevations of the curves to be within the current guidelines for unpaved rural roads. The safety project will also place correct signage at the curves to help motorists be more aware of the nature of the roadway.

Table A-2.1 Selected high-risk rural roads in Big Horn County

Road #	Road Name
11 ½	Road 11 1/2
177	Greybull River Road
196	Basin Gardens Road
229	Orchard Bench Road
140A	Lane 40
L12B	Lane 12
L33H	Lane 33
L38A	Lane 38
R12 1/2A	Road 12 1/2
R26	Road 26
R43 ½	Road 43 1/2
R5B	Road 5
R7A	Road 7
R9B	Road 9

A-3. Carbon County

Carbon County had eight roads rated as high-risk locations, as shown in Table A-3.1. The county selected one road from the combined ranking for implementation of the WRRSP, Hanna Leo, Kortes Road #291. The Wyoming Transportation Commission approved the recommendations of the Safety Management System projects sub-committee at their regularly scheduled meeting. The federal project number is HRRR 0.00 CN06065.

Carbon County also submitted a second application for the WRRSP for the Seminole Road #351. Safety improvements include advance warning signs, edge rumble strips, and pavement markings. The request for funding is under review.

Table A-3.1 Selected high-risk rural roads in Carbon County

Road #	Road Name
291	Hanna Leo, Kortes
324	Sinclair-Platte River (Golf Course)
351	Seminole
385	North Spring Creek
401	Sage Creek (South)
500	Jack Creek
504	Saratoga/Ten Mile/Ryan Park
561N	Savery North
700	Poison Butte/Government
701	Dad-Wamsutter
704	Baggs-Dixon-Savery

A-3.1 Countermeasures/Safety Improvements Hanna-Leo-Kortes Road #291

Safety improvements included installation of 28 advance warning signs, as shown in Table A-3.2, installation of 148 delineators, as shown in Table A-3.3 and extending five existing culverts by 20 feet, as shown in Table A-3.4. Carbon County finished this WHRRR safety project in February of 2011, and will be inspected for approval by the LTAP Center.

Table A-3.2 Sign Summary for Hanna-Leo-Kortes Road #291

SIGN #	LOCATION	DESCRIPTION & SIZE	MUTCD #
1	1.1 East	Intersection Rt. 24" x 24"	W2-2
2	1.2 East	Curve Left 24" x 24"	W1-2
3	1.4 West	Curve Right 24" x 24"	W1-2
4	1.6 Lt	Intersection Rt. 24" x 24"	W2-2
5	1.9 East	Curve Left 24" x 24"	W1-2
6	2.2 West	Curve Right 24" x 24" Speed Limit 40 18" x 18"	W1-2 W13-1
7	3.3 West	Intersection Rt. 24" x 24"	W2-2
8	3.4 East	Stop 24" x 24"	R1-1
9	3.5 East	Pavement Ends 24" x 24"	W8-3
10	3.6 East	Intersection Lt 24" x 24"	W2-2
11	3.8 East	Curve Left 24" x 24"	W1-2
12	4.0 West	Curve Right 24" x 24"	W1-2
13	5.3 East	Curve Right 24" x 24"	W1-2
14	5.6 West	Curve Left 24" x 24"	W1-2
15	5.6 East	Winding Road 24" x 24"	W 1-5
16	6.3 West	Winding Road 24" x 24"	W 1-5
17	7.2 East	Curve Left 24" x 24" Speed Limit 15 18" x 18"	W1-2 W13-1
18	7.3 East	Chevrons Arrow 12" x 18" Chevrons Arrow 12" x 18"	W1-8 W1-8
19	7.6 West	Curve Right 24" x 24"	W1-2
20	7.8 East	Winding Road 24" x 24"	W 1-5
21	7.9 East	Chevrons Arrow 12" x 18" Chevrons Arrow 12" x 18"	W1-8 W1-8
22	8.3 West	Winding Road 24" x 24"	W 1-5
23	8.7 East	Winding Road 24" x 24"	W 1-5
24	9.1 West	Winding Road 24" x 24"	W 1-5
25	9.5 East	Curve Left 24" x 24"	W1-2
26	9.7 West	Curve Right 24" x 24"	W1-2
27	10.9 East	Curve Left 24" x 24"	W1-2
28	11.1 West	Curve Right 24" x 24"	W1-2

Table A-3.3 Delineators Summary for Hanna-Leo-Kortes Road #291

LOCATION #	LOCATION	SIDE	DESCRIPTION & SIZE	ESTIMATED #
1	0.0 to 3.6	East	TYPE I	64
2	0.0 to 3.6	West	Type I	64
3	7.3 to 7.35	East	TYPE I	10
4	7.9 to 7.95	East	TYPE I	10

Table A-3.4 Culvert Extension Summary for Hanna-Leo-Kortes Road #291

EXTENSION #	LOCATION	LENGTH IN FEET	CUBIC YARD GRAVEL	UNIT
1	6.4 East	20	44	1EA
2	7.6 East	20	44	1EA
3	8.4 East	20	44	1EA
4	8.6 East	20	44	1EA
5	9.3 East	20	44	1EA

A-4. Crook County

Crook County had 11 roads rated as high-risk locations, as shown in Table A-4.1. Crook County selected three roads from the combined ranking for implementation of the WRRSP. These roads are: Old Sundance Road #93, Warren Peak Road #100, and Pine Ridge Road #205.

Crook County's application for safety improvements consists of: Pine Ridge Road #205 will include restriping the sidelines and centerlines; Old Sundance Road #93 will have restriping of the sidelines and centerlines; and Warren Peak Road #100 consists of repainting the sidelines and centerlines, installing delineator posts and installing advance warning signs. This WRRSP request has not been approved as of March 1, 2011.

Table A-4.1 Selected high-risk rural roads in Crook County

Road #	Road Name
12	Bertha Road
24	Douglas Road
68	D – Road
93	Old Sundance Road
100	Warren Peak Road
120	Coal-Divide Road
129	Sand Creek Road
151	Inyan Kara Creek Road
164	New Haven Road
180	McKean Road
205	Pine Ridge Road

A-5 Freemont County

Freemont County had 20 roads rated as high risk locations as shown, in Table A-5.1. The county selected one road from the combined ranking for implementation of the WRRSP, and two different safety projects on Baldwin Creek Road #193. The Wyoming Transportation Commission approved the recommendations of the Safety Management System projects sub-committee at their regularly scheduled meeting. The federal project numbers are HRRR 0.00 CN10095 and HRRR CN10096. The county is finishing preliminary engineering to determine any additional Right of Way needed and if any environmental impacts will occur before they can put together construction plans.

Table A-5.1 Selected high risk rural roads in Freemont County

ROAD #	ROAD NAME
4	Tweed Lane-U
14	Squaw Creek Road-U
43	North Second Street (Lander)-U
54	Riverview Road-U
137	Lower North Fork Road
154	Hillcrest Drive-U
176	Lysite-Moneta Road
193	Baldwin Creek Road
209	Coal Mine Road
240	Union Pass Road
272	Hutchison Road
285	Horse Creek Road
330	East Pavillion Road
335	Ethete Road
345	North Fork-Ft. Washakie Road
346	South Fork
347	Trout Creek Road
419	Lyons Valley Road
428	North Pavillion Road
498	Haymaker Road-U

A-5.1 Countermeasures/Safety Improvements Baldwin Road #193

Safety improvements included installing 1,959 linear feet of corrugated beam guardrail for HRRR 0.00 CN10095 and installing 500 linear feet of sheet piling; backfilling with 200 cubic yards of select fill and installing 540 linear feet of corrugated beam guardrail for HRRR CN10096.

A-6. Goshen County

Goshen County had 15 roads rated as high-risk locations, as shown in Table A-6.1. The county selected one road from the combined ranking for implementation of the WRRSP, Sheep Creek Road #72D. The safety project had not been approved as of March 1, 2011.

Goshen County's application for safety improvements consists of widening the road shoulders on approximately 2.8 miles of Sheep Creek Road #72D. This WRRSP request had not been approved as of March 1, 2011. The county is putting together a set of construction plans.

Table A-6.1 Selected high-risk rural roads in Goshen County

Road #	Road Name
29C	Lingle-Veteran Rd
37B	<i>No Name</i>
37F	<i>No Name</i>
41B	<i>No Name</i>
47C	<i>No Name</i>
47D	Buttermilk Road
49N	<i>No Name</i>
50B	<i>No Name</i>
51C	<i>No Name</i>
51D	<i>No Name</i>
68C	<i>No Name</i>
72D	<i>No Name</i>
74C	<i>No Name</i>
84A	Grey Rocks Road
9B	County Line Road

A-7. Johnson County

Johnson County had 13 roads rated as high-risk locations, as shown in Table A-7.1. The county selected three roads from the combined ranking for implementation of the WRRSP: Rock Creek Road #1, Stockyard Road #8, and Wagon Box Road #55A. The Wyoming Transportation Commission approved the recommendations of the Safety Management System projects sub-committee at their regularly scheduled meeting. The federal project number is HRRR 0.00 CN.

As of March 1, 2011, the county is approximately half finished with the implementation of the safety project.

Table A-7.1 Selected high-risk rural roads in Johnson County

Road #	Road Name
1	Rock Creek
3	Hazelton
8	Stockyard
13	Trabing
14	Crazy Woman Canyon
40	Kumor
55A	Wagon Box
85	Shell Creek
91H	French Creek
132	Klondike
212	Airport
252	North By-Pass/South By-Pass
256	Upper Clear Creek

A-7.1 Countermeasures/Safety Improvements Rock Creek Road #1

Safety improvements included installation of 27 advance warning signs, as shown in Table A-7.2, installation of 6.2 miles of delineators on both sides of the road, as shown in Table A-7.3, and applying edge line pavement markings on 6.2 miles of the road on both sides, shown in Table A-7.4.

Table A-7.2 Sign Summary for Rock Creek Road #1

SIGN #	LOCATION	DESCRIPTION	MUTCD #
1	0.7R	Curve LT	W1-2
2	1.0L	Curve RT	W1-2
3	1.5R	Arrow	W1-6
4	4.6R	Winding Road	W1-5
5	4.8R	Stop Ahead	W3-1
6	4.9L	Winding Road	W1-5
7	4.9L	Arrow	W1-6
8	5.2L	Curve RT	W1-2
9	5.3R	Curve LT	W1-2
10	5.6L	Curve LT	W1-2
11	6.2R	Pavement Ends	W8-3
12	6.3R	Winding Road	W1-5
13	6.8R	Winding Road	W1-5
14	7.5R	Curve RT	W1-2
15	7.8L	Curve LT	W1-2
16	7.9R	Winding Road	W1-5
17	8.3L	Winding Road	W1-5
18	8.7R	Winding Road	W1-5
19	9.1L	Winding Road	W1-5
20	9.2R	Winding Road	W1-5
21	10.2L	Winding Road	W1-5
22	11.5R	Winding Road	W1-5
23	11.8R	One Lane Bridge	W5-3
24	12.0L	One Lane Bridge	W5-3
25	12.1L	Winding Road	W1-5
26	12.7L	One Lane Bridge	W5-3
27	12.5R	One Lane Bridge	W5-3

Table A-7.3 Delineators Summary for Rock Creek Road #1

LOCATION #	LOCATION	SIDE	DESCRIPTION	ESTIMATED #
1	0.0 to 6.2	Both	TYPE I	112

Table A-7.4 Pavement Marking for Rock Creek Road #1 Summary

LOCATION #	LOCATION	SIDES	CENTER	TOTAL LENGTH
1	0.0 to 6.2	Both	No	12.4 Miles

A-7.2 Countermeasures/Safety Improvements Stockyard Road #8

Safety improvements included installation of 10 advance warning signs, as shown in Table A-7.5.

Table A-7.5 Sign Summary for Stockyard Road #8

SIGN #	LOCATION	DESCRIPTION	MUTCD #
1	0.1L	Stop Ahead	W3-1
2	0.3R	Curve LT	W1-2
3	0.4R	Arrow	W1-6
4	0.5L	Curve RT	W1-2
5	0.6R	Curve RT Intersection	W1-10
6	0.8L	Curve LT Intersection	W1-10
7	0.8L	Speed Limit 35	R2-1
8	0.8R	Speed Limit 35	R2-1
9	1.2L	Curve RT Intersection	W1-10
10	1.5R	Stop Ahead	W3-1

A-7.3 Countermeasures/Safety Improvements Wagon Box Road #55A

Safety improvements included installation of 17 advance warning signs, as shown in Table A-7.6, installation of 0.4 miles of delineators on both sides of the road, as shown in Table A-7.7, and applying edge line pavement markings on 0.4 miles of the road on both sides, as shown in Table A-7.8, and 4 cattleguard extensions, as shown in Table A-7.9.

Table A-7.6 Sign Summary for Wagon Box Road #55A

SIGN #	LOCATION	DESCRIPTION	MUTCD #
1	0.1L	Stop Ahead	W3-1
2	0.3R	Curve RT	W1-2
3	0.3R	Curve LT	W1-2
4	0.40	4 Object Marker	OM3-C
5	0.5L	4 Way Intersec.	W2-1
6	0.5L	Curve LT	W1-2
7	0.5R	T Intersec.	W2-2
8	0.6L	T Intersec.	W2-2
9	1.30	4 Object Marker	OM3-C
10	1.5R	Winding Road	W1-5
11	1.9L	Winding Road	W1-5
12	1.9R	Winding Road	W1-5
13	2.3L	Winding Road	W1-5
14	2.3	4 Object Marker	OM3-C
15	2.5	4 Object Marker	OM3-C
16	3.7R	Winding Road	W1-5
17	4.4L	Winding Road	W1-5

Table A-7.7 Delineators Summary for Wagon Box Road #55A

LOCATION #	LOCATION	SIDE	DESCRIPTION	ESTIMATED #
1	0.0 to 0.4	Both	TYPE I	18

Table A-7.8 Pavement Marking for Wagon Box Road #55A

LOCATION #	LOCATION	SIDES	CENTER	TOTAL LENGTH
1	0.0 TO 0.4	Both	No	0.8 Miles

Table A-7.9 Cattleguard Extension Summary for Wagon Box Road #55A

CATTLEGUARD #	MILE POST LOCATION	LENGTH IN FEET	TYPE	UNIT
1	2.1	24	HS-20-44 (MS18)	1EA
2	2.3	24	HS-20-44 (MS18)	1EA
3	2.4	24	HS-20-44 (MS18)	1EA
4	3.2	24	HS-20-44 (MS18)	1EA

A-8. Laramie County

Laramie County had 15 roads rated as high-risk locations, as shown in Table A-8.1. The county selected three roads from the combined ranking for implementation of the WRRSP, Gilchrist Road #109-1, Durham Road #136-1, and Crystal Lake Road #210-1. The Wyoming Transportation Commission approved the recommendations of the Safety Management System projects sub-committee at their regularly scheduled meeting. The federal project number is HRRR 0.00 CN02090.

Laramie County completed the project in the Spring of 2010 and it was inspected by the Wyoming LTAP Center in April 2010; it was found to be complete.

Table A-8.1 Selected high-risk rural roads in Laramie County

Road #	Road Name
210-1	Crystal Lake
109-1 N	Gilchrist
124-2	Old Yellowstone
215-3 E	Railroad Hillside Ridge
136-1 S	Durham
209-2	Campstool
207-1	Arcola
143-2	Hillside North/Midway
212-7	Old Hwy Burns East
203-1	Chalk Bluff
102-1	Harriman
162-2	Albin/LaGrange
164-1	Cemetery/Pine Bluff South
120-1	Roundtop
149-1	A-149-1

A-8.1 Countermeasures/Safety Improvements Gilchrist Road #109-1

Safety improvements included installation of 42 advance warning signs, as shown in Table A-8.2, and the removal of three 12-foot wide cattleguards that were replaced with three 24-foot cattleguards, the location and type are shown in Table A-8.3.

Table A-8.2 Sign Summary for Gilchrist Road #109-1

SIGN #	LOCATION	DESCRIPTION	MUTCD #
1	0.0 Lt	Stop	R1-1
2	0.1 Rt	Open Range	
3	0.1 Rt	Speed Limit 35	R2-1
4	1.1 Rt	Curve Right	W1-2
5	1.1 Lt	Stop Ahead	W3-1
6	1.4 Lt	Curve Left	W1-2
7	1.5 Lt	Open Range	
8	2.7 Lt	Speed Limit 35	R2-1
9	2.7 Rt	Speed Limit 35	R2-1
10	2.8 Lt	Open Range	
11	3.1 Rt	Winding Road	W 1-5
12	3.6 Lt	Winding Road	W 1-6
13	3.9 Rt	Curve Right	W1-2
14	4.0 Lt	Speed Limit 35	R2-1
15	4.2 Rt	Curve Left	W1-2
16	4.5 Rt	Curve Right	W1-2
17	4.7 Lt	Curve Left	W1-2
18	5.2 Rt	Open Range	
19	5.2 Lt	Speed Limit 35	R2-1
20	5.2 Rt	Curve Left	W1-2
21	5.2 Rt	Speed Limit 35	W13-1
22	5.5 Lt	Curve Right	W1-2
23	5.6 Rt	Shoulder Drop Off	W 8-9a
24	6.3 Rt	Winding Road	W 1-5
25	6.6 Lt	Winding Road	W 1-6
26	6.6 Rt	Curve Left	W1-2
27	6.8 Lt	Curve Right	W1-2
28	8.0 Rt	Curve Right	W1-3
29	8.0 Rt	Speed Limit 20	R2-1
30	8.1 Lt	Speed Limit 35	R2-1
31	8.1 Rt	Highway-Rail Grade Crossing	W10-1
32	8.2 Lt	Shoulder Drop Off	W 8-9a
33	8.2 Lt	Arrow	W 1-6
34	8.2 Lt	Arrow	W 1-7
35	8.3 Lt	Highway-Rail Grade Crossing	W10-1
36	8.3 Rt	Curve Left	W1-2
37	8.4 Lt	Curve Right	W1-3
38	8.4 Rt	Shouldr Drop Off	W 8-9a
39	9.3 Lt	Speed Limit 35	R2-1
40	9.3 Lt	Shouldr Drop Off	W 8-9a
41	9.3 Rt	Stop Ahead	W3-1
42	9.4 Rt	Stop	R1-1

Table A-8.3 Cattleguard Summary for Gilchrist Road #109-1

#	Location	DESCRIPTION & SIZE
1	5.2	24' x 7' Concrete Bases Roll Formed Rail Guard
2	6.3	24' x 7' Concrete Bases Roll Formed Rail Guard
3	7.9	24' x 7' Concrete Bases Roll Formed Rail Guard

A-8.2 Countermeasures/Safety Improvements Durham Road 136-1

Safety improvements included installation of 17 advance warning signs. The location and type are shown in Table A-8.4.

Table A-8.4 Sign Summary for Durham Road #136-1

SIGN #	LOCATION	DESCRIPTION	MUTCD #
1	0.01 Lt	Stop	R1-1
2	0.1 Lt	Stop Ahead	W3-1
3	0.2 Rt	Speed Limit 35	R2-1
4	1.0 Lt	Speed Limit 35	R2-1
5	2.0 Rt	Speed Limit 35	R2-1
6	2.0 Lt	Speed Limit 35	R2-1
7	3.0 Rt	Turn Right	W1-1
8	3.0 Rt	Speed Limit 20	W13-1
9	3.05 Lt	Arrow	W 1-6
10	3.05 Lt	Arrow	W 1-7
11	3.1 Lt	Turn Right	W1-1
12	3.1 Lt	Speed Limit 20	W13-1
13	3.2 Rt	Highway-Rail Grade Crossing	W10-1
14	3.21 Rt	Stop Ahead	W3-1
15	3.3 Lt	Highway-Rail Grade Crossing	W10-1
16	3.3 Rt	Stop	R1-1
17	3.3 Rt	Arrow	W 1-7
18	3.5 Lt	Stop	R1-1
19	3.6 Lt	Stop Ahead	W3-1

A-8.3 Countermeasures/Safety Improvements Crystal Lake Road 210-1

Safety improvements included installation of 20 advance warning signs. The location and type are shown in TableA-8.5.

Table A-8.5 Sign Summary for Crystal Lake Road # 210-1

SIGN #	LOCATION	DESCRIPTION	MUTCD #
1	0.0 Lt	Stop	R1-1
2	0.1 Rt	Speed Limit 40	R2-1
3	0.1Lt	Stop Ahead	W3-1
4	0.3Rt	Turn Left	W1-1
5	0.5 Lt	Curve Right	W1-2
6	0.8 Rt	Curve Right	W1-2
7	1.0 Lt	Curve Left	W1-2
8	3.4 Rt	Curve Left	W1-4
9	3.6 Lt	Speed Limit 40	R2-1
10	3.6 Rt	Speed Limit 40	R2-1
11	3.8 Lt	Curve Right	W1-4
12	4.4 Rt	Curve Right	W1-4
13	4.6 Rt	Winding Road	W1-5
14	4.9 Lt	Winding Road	W1-5
15	5.2 Rt	Winding Road	W1-5
16	5.7 Lt	Winding Road	W1-5
17	6.0 Rt	T-intersection	W2-4
18	6.2 Lt	T-intersection	W2-5
19	6.2 Rt	Winding Road	W 1-5
20	6.2 Rt	Speed Limit 30	W13-1
21	6.7 Lt	Winding Road	W 1-5
22	6.9 Rt	Curve Left	W1-4
23	7.3 Lt	Curve Right	W1-4
24	7.6 Lt	Winding Road	W 1-5
25	7.6 Lt	Speed Limit 25	W13-1
26	7.8 Lt	Hills Next 10 Miles Keep Right	
27	8.0 Lt	Speed Limit 30	R2-1
28	8.0 Rt	Speed Limit 30	R2-1
29	10.1 Rt	Winding Road	W 1-5
30	10.5 Lt	Winding Road	W 1-5
31	10.6 Lt	County Road 210-1	

A-9. Lincoln County

Lincoln County had 17 roads rated as high-risk locations, as shown in Table A-9.1. The county selected 12 roads from the combined ranking for implementation of the WRRSP, Clark Lane #115, Muddy String #117, Cedar Creek #118, Thayne Bedford #122, Bedford-Turnerville #123, Strawberry Creek #126, Swift Creek Lane #137, Bitter Creek #140, Crow Creek #141, Cokeville-Utah Line #207, Labarge Creek #315, and Fontenelle North #316. The Wyoming Transportation Commission approved the recommendations of the Safety Management System projects sub-committee at their regularly scheduled meeting. The federal project numbers are HRRR 0.00 CN12051, CN12052, and CN12053.

Lincoln County also applied for second and third rounds of funding for safety improvements. The second round consists of six projects involving nine roads, Muddy String #117, Thayne Bedford #122, Bedford-Turnerville #123, Strawberry Creek #126, Allred #135, Swift Creek Lane #137, Bitter Creek #140, Crow Creek #141, and Fairview Spring Creek #144. Round two safety improvements consist of shoulders and shoulder work, culvert extensions of various sizes, removal of fence from inside of right-of-way and rebuilding on the right-of-way line, guardrail installation, removal and resetting of mailboxes a safe distance from the traveled roadway, and pavement striping.

The third round consists of one project involving one road: Allred #135. Safety improvements consist of removal and resetting of mailboxes at a safe distance from the traveled roadway.

Table A-9.1 Selected high-risk rural roads in Lincoln County

Road #	Road Name
115	Clark Lane
117	Muddy String
118	Cedar Creek
122	Thayne Bedford
123	Bedford-Turnerville
126	Strawberry Creek
135	Allred
137	Swift Creek Lane
140	Bitter Creek (Main St-Fairview)
141	Crow Creek
144	Fairview Spring Creek
207	Cokeville-Utah Line
313	Fontenelle Dam
315	LaBarge Creek
316	Fontenelle North
327	Fox Farm
340	Shute Creek Road

A-9.1 Countermeasures/Safety Improvements Clark Lane Road #115

Safety improvements included installation of nine advance warning signs, 10,560 feet of centerline pavement marking, and 969 feet of guardrail. The location and type are shown in Table A-9.2.

Table A-9.2 Summary for Clark Lane Road #115

Location		Speed Limit 45	Extremely Hazardous During Winter	Object Marker Type 3 OM-3L	Object Marker Type 3 OM-3R	Curve Right 20 W1-1a	Slippery and Icy	Guardrail (feet)	Center Line (feet)
0.03	S		1						
0.07	S	1							
0.3	S&N			2	2				
1.4	S						1		
1.7	S							180	
1.8	N							150	
1.9	S							330	
1.9	N							309	
1.95	N	1							
1.95	S					1			
0-2									10560

A-9.2 Countermeasures/Safety Improvements Muddy String Road #117

Safety improvements included installation of 24 advance warning signs, 29,040 feet of centerline pavement marking, and 463 feet of guardrail. The location and type are shown in Table A-9.3.

Table A-9.3 Summary for Muddy String Road #117

Location		Speed Limit 45	Intersection W2-1	Stock Sign W11-4	Equipment W11-5	Double Arrow W1-7	Stop R1-1	Reduce Speed 25 W3-5	Speed Limit 25 W13-1	Intersection W2-2	Guardrail (feet)	Curve Left 20 W1-1a	Center Line (feet)
0.05	E	1											
0.1	W		1										
0.8	E			1									
0.8	E				1								
1.1	W			1									
1.5	W					1							
1.7	W						1						
2.2	E	1											
2.5	E		1										
2.6	W		1										
2.9	W						1						
3.3	E							1					
3.4									1				
3.5	W	1											
3.6	E	1											
3.65	W								1				
3.7	W							1					
4.3	E	1											
4.4	E									1			
4.4	W	1											
4.6	W									1			
4.6	E	1											
5.3	W										100		
5.4	E										144		
5.4	W										219		
5.4	E											1	
5.5	W	1											
0-5.5													29040

A-9.3 Countermeasures/Safety Improvements Cedar Creek Road #118

Safety improvements included installation of 10,560 feet of centerline pavement marking at mile post 0.0 to 2.0.

A-9.4 Countermeasures/Safety Improvements Thayne Bedford Road #122

Safety improvements included installation of 25,344 feet of centerline pavement marking at mile post 0.0 to 4.8.

A-9.5 Countermeasures/Safety Improvements Bedford-Turnerville Road #123

Safety improvements included installation of 31,680 feet of centerline pavement marking at mile post 0.0 to 6.0.

A-9.6 Countermeasures/Safety Improvements Strawberry Creek Road #126

Safety improvements included installation of 83 advance warning signs and 29,040 feet of centerline pavement marking. The location and type are shown in Table A-9.4.

Table A-9.4 Summary for Strawberry Creek Road #126

Location		Speed Limit 45 R2-1	Intersection W2-1	Curve Right 30 W1-2a	Truck Crossing W8-6	Curve Left 20 W1-1a	Stop R1-1	Reduce Speed 25 W3-5	Speed Limit 25 W13-1	Intersection W2-2	Buckle Up ??	Curve Left 30 W1-2a	Curve Left W1-2	Chevron W1-8	Curve Right W1-2	Winding Road W1-5	Speed Limit 30 R2-1	Object marker Type 3 OM-3R	Curve Right 20 W1-1a	Center Line (feet)
0.01	S										1									
0.1	S	1																		
0.13	S												1							
0.15	S													2						
0.2	N														1					
0.5	S														1					
0.6	N													2						
0.7	N												1							
0.9	S								1	1										
1.1	N									1										
1.3	S															1	1			
1.4	N													2				2		
1.6	N													6						
1.65	S											1								
1.7	S													6						
1.8	N			1																
1.9	S				1									6						
2.1	S													6						
2.15	N				1															
2.2	N															1				
2.3	S																		1	
2.4	N					1														
2.4	S	1																		
2.7	S																1			
2.9	S									1										
3.1	N										1									
3.12	N									1										
3.2	S									1										
3.3	S	1																		
3.33	N									1							1			
3.5	N/S																	4		
4.7	S					1														
4.75	S													4						
4.8	N																		1	
4.85	N													2						
5	N													6						
5.03	N/S																	2		
5.3	N/S																	4		
1-5.5																				2904 0

A-9.7 Countermeasures/Safety Improvements Swift Creek Lane #137

Safety improvements included installation of 5,280 feet of centerline pavement markings at mile post 0.0 to 1.0.

A-9.8 Countermeasures/Safety Improvements Bitter Creek Lane #140

Safety improvements included installation of 43,824 feet of centerline pavement markings at mile post 0.0 to 8.3.

A-9.9 Countermeasures/Safety Improvements Crow Creek Road #141

Safety improvements included installation of 42 advance warning signs and 15,840 feet of centerline pavement markings. The location and type are shown in Table A-9.5.

Table A-9.5 Summary for Crow Creek Road #141

Location		Speed Limit 35 R2-1	Intersection W2-2	Chevron W1-8	Winding Road W1-5	Stop Ahead W3-1	Center Line (feet)
0.1	E					1	
0.7	W		1				
0.8	E		1				
1	W				1		
1.2	E/W			30			
2	E	1					
2.1	W		1				
2.2	E/W		2				
2.3	W		1				
2.4	E		1				
2.6	E/W	2					
0-3							15840

A-9.10 Countermeasures/Safety Improvements Cokeville-Utah Line Road #207

Safety improvements included installation of 89,760 feet of centerline pavement markings at mile post 0.0 to 17.0.

A-9.11 Countermeasures/Safety Improvements Labarge Creek Road #315

Safety improvements included installation of 58,080 feet of centerline pavement markings at mile post 0.0 to 11.0.

A-9.12 Countermeasures/Safety Improvements Fontenelle Road #316

Safety improvements included installation of four advance warning signs. The location and type are shown in Table A-9.6.

Table A-9.6 Summary for Fontenelle Road #316

Location		Curve Left 30 W1-2a	Narrow Bridge W5-2	Curve Right 30 W1-2a
0.2	E	1		
0.3	W			1
0.5	E		1	
0.7	W		1	

A-10. Park County

The WRRSP has been implemented in the county and high-risk locations have been identified. Park County had 18 roads rated as high-risk locations, as shown in Table A-10.1. The WRRSP showed the need for advance warning signs on several roads and the county decided to take care of that project in-house. In addition, one of the high-risk roads had a major alignment problem. Fixing the sharp curve would require additional right of way. It was determined that such a project would not be suitable for funding out of the WRRSP.

Several roads are eligible for implementation of the WRRSP.

Table A-10.1 Selected high-risk rural roads in Park County

Road No.	Road Name
1AB	Old Highway 292 and 297
3DX	Name Unknown-U
3EX	Sage Creek Road
3EXS	Sunset Rim Road
3LE	Lower Greybull Road
6UU	Diamond Basin Road
L11B	Lane 11B
L11HB	Lane 11 1/2B
L13	Old Highway 295
L14A	Lane 14
R10A	Road 10
R11B	Road 11B
R1A	Road 1
R2A	Road 2
R5A	Road 5A
R7	Road 7
R8H	Road 8 1/2
R9	Road 9

A-11. Sheridan County

Sheridan County had nine roads rated as high-risk locations, as shown in Table A-11.1. The county selected two roads from the combined ranking for implementation of the WRRSP: Beckton Road #89 and Prairie Dog Road #121. The Wyoming Transportation Commission approved the recommendations of the Safety Management System projects sub-committee at their regularly scheduled meeting. The federal project numbers are HRRR 0.00 CN03033 and CN03034.

Sheridan County also applied for a second round of funding for safety improvements to Hersey Road #49.

Table A-11.1 Selected high-risk rural roads in Sheridan County

Road #	Road Name
67	Wolf Creek Road
87	Beaver Creek Road
89	Beckton Road
92	Tongue Canyon Road
103	Brinton Road
127	Upper Prairie Dog Road
145	Wagon Box Road
149	Lower Piney Road
1211	Lower Prairie Dog Road-U

A-11.1 Countermeasures/Safety Improvements Beckton Road #89

Safety improvements included installation of advance warning sign and spot grading to help mitigate rollover crash types at milepost 11.0

A-11.2 Countermeasures/Safety Improvements Lower Prairie Dog Road #1211

Safety improvements included installation of advance warning signs, spot grading and to correct very poor vehicle sight distance on approximately half mile.

A-12. Weston County

The WRRSP has been implemented in the county and high-risk locations have been identified. Weston County had 14 roads rated as high risk locations, as shown in Table A-12.1 The WRRSP showed the need for advance warning signs on several roads and some minor horizontal alignment safety improvements. The county is deciding what safety improvements to submit applications for funding.

Several roads can be selected for the implementation of the WRRSP.

Table A-12.1 Selected high-risk rural roads in Weston County

Road #	Road Name
1	CR 1/Old US 85 Cutacross RD
1A	CR 1A/Old US 85
3	CR 3/Morrissey RD
5	CR 5/Grieves RD/Fisher RD
6	Beaver Creek RD/Stockdale RD/CR 6
9	Beaver Creek Cutacross RD/Salt Creek RD/CR 9
10	CR 10/Oil Creek RD
11	CR 11/Green Mountain RD/Skull Creek RD
14	CR 14/Skull Creek RD/Pzinski RD/Horton RD
18	CR 18/Raven Creek RD/Pophan RD
23	CR 23/Salt Creek RD
68	CR 68/Greenhouse RD
71	CR 71/Kenwood DR/Painted Hills RD
75	Barton RD/CR 75

APPENDIX B.

DETAILS FOR WRRSP SIGN PROGRAM IN EACH COUNTY

Table B-1. Big Horn County High Risk Roads List

County	Road Name	Road No.	Beg MP	End MP	Fatal + Incapacitating Injury Crashes	Non-Incapacitating + Possible Injury Crashes	Property Damage Only	EPDO	# Signs
Big Horn	ROAD 5	R5B	2.3	3.3	3	3	2	39.5	
Big Horn	ROAD 7	R7A	1.2	2.2	1	1	5	17.5	19
Big Horn	LANE 38	L38A	4	5	1	2	1	17	23
Big Horn	ROAD 5	R5B	1	2	1	2	0	16	
Big Horn	ROAD 26	R26	5.1	6.1	1	1	2	14.5	11
Big Horn	LANE 13	L13B	2.9	3.9	1	1	0	12.5	24
Big Horn	LANE 16 1/2	L16H	3	4	1	1	0	12.5	19
Big Horn	GREYBULL RIVER ROAD	177	1.6	2.6	1	0	2	11	24
Big Horn	ORCHARD BENCH ROAD	229	4.8	5.8	1	0	1	10	
Big Horn	ALKALAI-COLD SPRINGS ROAD	268	14	15	1	0	1	10	40
Big Horn	LANE 8 1/2	L8HA	0.5	1.5	1	0	1	10	4
Big Horn	ROAD 11	R11A	0	1	1	0	1	10	13
Big Horn	ROAD 20	R20	2.6	3.6	1	0	1	10	16
Big Horn	ROAD 5	R5A	1.5	2.5	1	0	1	10	26
Big Horn	LANE 37	L37A	0.6	1.6	1	0	0	9	13
Big Horn	LANE 43	L43	9.7	10	1	0	0	9	22
Big Horn	ROAD 10	R10A	0.5	1	1	0	0	9	4
Big Horn	ROAD 16	R16A	0.4	1	1	0	0	9	13
Big Horn	LANE 33	L33H	0.2	1.2	0	2	1	8	17
Big Horn	LANE 31	L31	2.3	3	0	2	0	7	24
Big Horn	LANE 12	L12B	2.5	3.5	0	1	3	6.5	24
Big Horn	LANE 40	L40A	6.1	7	0	1	3	6.5	
Big Horn	ROAD 9	R9B	1	2	0	1	3	6.5	51
Big Horn	ORCHARD BENCH ROAD	229	0.1	1.1	0	1	2	5.5	34
Big Horn	LANE 40	L40A	4.7	5.7	0	1	2	5.5	33
Big Horn	LANE 7	L7	1.2	2	0	1	2	5.5	17
Big Horn	ROAD 5	R5B	4	5	0	1	2	5.5	
								Total	471

Table B-2. Big Horn County Sign Request Form

**ROAD SIGN PROGRAM (RSP)
BIG HORN REQUEST FORM**

PROJECT SIGN #	SIGNS			POSTS			
	QUANTITY	MUTCD #	SIZE	4"x4" WOOD		METAL BREAK AWAY	
				12'	14'	12'	14'
1	8	W1-1RT	30X30			435	9
2	10	W1-1LT	30X30				
3	38	W1-2RT	30X30				
4	41	W1-2LT	30X30				
5	14	W1-4RT	30X30				
6	13	W1-4L	30X30				
7	10	W1-5RT	30X30				
8	10	W1-5LT	30X30				
9	2	W1-7	48x24				
10	6	W1-6	48x24				
11	12	W1-8	18X24				
12	20	W2-1	24x24				
13	54	W2-2	24x24				
14	4	W2-3	24x24				
15	8	W2-4	24x24				
16	7	W2-5	24x24				
17	13	W3-1	30x30				
18	4	W3-2	30x30				
19	1	W4-4P	24x12				
20	6	W5-2	30x30				
21	1	W7-1a	24x24				
22	1	W8-3	30x30				
23	1	W8-6	24x24				
24	1	W11-2	24x24				
25	2	W11-3	24x24				
26	1	W11-10	24x24				
27	1	W16-9P	24x12				
28	1	W13-1P 20 MPH	18x18				
29	2	W13-1P 25MPH	18x18				
30	2	W13-1P 30 MPH	18x18				

Table B-2. Big Horn County Sign Request Form (Cont)

31	8	W13-1P 35 MPH	18x18					
32	2	W13-1P 40 MPH	18x18					
33	1	W13-1P 45 MPH	18x18					
34	3	W13-1P 50 MPH	18x18					
35	3	W14-1	24x24					
36	6	W7-3aP Next 1 Mile	24x18					
37	2	W7-3aP Next 2 Mile	24x18					
38	4	W7-3aP Next 3 Mile	24x18					
39	2	W7-3aP Next 7 Mile	24x18					
40	74	R1-1	30x30					
41	44	R1-2	30x30x30					
42	4	R1-3	18x6					
43	11	R2-1 35 MPH	24x30					
44	10	R2-1 45 MPH	24x30					
45	2	R2-1 50 MPH	24x30					
46	1	R2-1 55 MPH	24x30					
TOTAL	471		TOTAL	0		435		9

Table B-3. Campbell County High-Risk Roads List

County	Road Name	Road No.	Beg MP	End MP	Fatal + Incapacitating Injury Crashes	Non-Incapacitating + Possible Injury Crashes	Property Damage Only	EPDO	# Signs
Campbell	ECHETA ROAD-U	29	3.3	4.3	4	1	5	44.5	
Campbell	AMERICAN ROAD	3	1	2	2	4	7	39	
Campbell	UNION CHAPEL ROAD-U	101	4.8	5.8	1	6	9	39	
Campbell	AMERICAN ROAD	3	0	1	1	3	19	38.5	58
Campbell	FAIRVIEW ROAD	34	2.3	3.3	2	1	5	26.5	
Campbell	RECLUSE ROAD	82	3	4	2	2	1	26	
Campbell	WILD HORSE ROAD	106	0	1	2	2	1	26	7
Campbell	ECHETA ROAD-U	29	4.3	5.3	1	3	6	25.5	
Campbell	ECHETA ROAD-U	29	1.3	2.3	1	4	2	25	59
Campbell	BISHOP ROAD	12	9	10	1	3	2	21.5	
Campbell	RECLUSE ROAD	82	0	1	1	3	2	21.5	35
Campbell	FAIRVIEW ROAD	34	3.3	4.3	1	3	1	20.5	
Campbell	HILIGHT ROAD	52	0	1	1	3	0	19.5	
Campbell	ADON ROAD	1	5.5	6.5	1	2	3	19	
Campbell	ADON ROAD	1	16	17	2	0	1	19	
Campbell	BISHOP ROAD	12	27.3	28.3	1	2	3	19	
Campbell	EDWARDS ROAD(AKA ANTELOPE RD)	30	4	5	1	2	3	19	
Campbell	ECHETA ROAD-U	29	2.3	3.3	0	3	7	17.5	
Campbell	UNION CHAPEL ROAD-U	101	1.1	2.1	1	1	5	17.5	43
Campbell	BISHOP ROAD	12	24.1	25.1	0	4	3	17	
Campbell	FORCE ROAD	32	3	4	1	2	1	17	
Campbell	HILIGHT ROAD	52	13.9	14.9	1	2	1	17	
Campbell	BISHOP ROAD	12	0	1	1	1	4	16.5	34
Campbell	EDWARDS ROAD(AKA ANTELOPE RD)	30	5	6	1	1	4	16.5	
Campbell	UNION CHAPEL ROAD-U	101	3.7	4.7	0	3	6	16.5	
Campbell	ADON ROAD	1	0	1	0	3	5	15.5	50
Campbell	ADON ROAD	1	3.1	4.1	0	3	5	15.5	
Campbell	BISHOP ROAD	12	28.6	29.6	0	3	5	15.5	

Table B-3. Campbell County High-Risk Roads List (Cont)

Campbell	EDWARDS ROAD(AKA ANTELOPE RD)	30	2	3	1	1	3	15.5	
Campbell	NORTH GARNER LAKE ROAD-U	38N	8.5	9.5	1	1	3	15.5	
Campbell	BISHOP ROAD	12	21	22	1	0	5	14	
Campbell	FAIRVIEW ROAD	34	5.5	6.5	1	0	5	14	
Campbell	ADON ROAD	1	1	2	0	1	10	13.5	
Campbell	AMERICAN ROAD	3	2.2	3.2	0	1	10	13.5	
Campbell	ANTELOPE ROAD	4	1.2	2.2	1	1	1	13.5	
Campbell	EDWARDS ROAD(AKA ANTELOPE RD)	30	1	2	1	1	1	13.5	16
Campbell	HILIGHT ROAD	52	5.8	6.8	1	1	1	13.5	23
Campbell	RENO ROAD	83	0.9	1.9	1	1	1	13.5	2
Campbell	BISHOP ROAD	12	25.3	26.3	1	0	4	13	
Campbell	ECHETA ROAD-U	29	6.8	7.8	1	0	4	13	
Campbell	COLLINS ROAD	23	10.6	11.6	1	1	0	12.5	
Campbell	ECHETA ROAD-U	29	24.3	25.3	1	1	0	12.5	
Campbell	FAIRVIEW ROAD	34	7.5	8.5	1	1	0	12.5	
Campbell	S-A ROAD	86	4.2	5.2	1	1	0	12.5	10
Campbell	ADON ROAD	1	8.8	9.8	1	0	3	12	
Campbell	EDWARDS ROAD(AKA ANTELOPE RD)	30	6	7	1	0	3	12	
Campbell	FORCE ROAD	32	7.4	8.4	0	2	5	12	
Campbell	FORCE ROAD	32	2	3	0	3	1	11.5	8
Campbell	FAIRVIEW ROAD	34	1	2	0	3	1	11.5	
Campbell	HAIGHT ROAD	44	3.5	4.5	0	3	1	11.5	
Campbell	TIMBER CREEK ROAD	96	2.1	3.1	0	3	1	11.5	
Campbell	COLLINS ROAD	23	0	1	1	0	2	11	12
Campbell	ECHETA ROAD-U	29	5.5	6.5	0	2	4	11	
Campbell	EDWARDS ROAD(AKA ANTELOPE RD)	30	3	4	1	0	2	11	
Campbell	UNION CHAPEL ROAD-U	101	2.4	3.4	0	2	4	11	
Campbell	BREENE ROAD	16	0.4	1.4	0	3	0	10.5	7
Campbell	ANTELOPE ROAD	4	6	7	1	0	1	10	
Campbell	CLARKELEN ROAD	22	1	2	0	2	3	10	
Campbell	EDWARDS ROAD(AKA ANTELOPE RD)	30	11.2	12.2	1	0	1	10	
Campbell	FAIRVIEW ROAD	34	4.5	5.5	0	1	6	9.5	
Campbell	ADON ROAD	1	4.2	5.2	0	2	2	9	

Table B-3 Campbell County High-Risk Roads List (Cont)

Campbell	BARTON ROAD	6	2.7	3	1	0	0	9	2
Campbell	BAY HORSE ROAD	7	4	5	1	0	0	9	2
Campbell	BLACK AND YELLOW ROAD	14	8	9	1	0	0	9	2
Campbell	BREENE ROAD	16	4.8	5	1	0	0	9	
Campbell	BUFFALO CUT ACROSS ROAD	18	13.5	14.5	1	0	0	9	
Campbell	CHRISTENSEN ROAD	21	3.4	4.4	1	0	0	9	4
Campbell	CLARKELEN ROAD	22	33.5	34.5	1	0	0	9	
Campbell	CLARKELEN ROAD	22	34.6	35.6	1	0	0	9	
Campbell	ECHETA ROAD-U	29	25.4	26.4	1	0	0	9	
Campbell	GREENOUGH ROAD	39	5.4	6	1	0	0	9	2
Campbell	GREY ROAD	40	2.5	3.5	1	0	0	9	3
Campbell	HILIGHT ROAD	52	18	19	1	0	0	9	
Campbell	LAWVER ROAD	65	15.5	16	1	0	0	9	2
Campbell	MONTGOMERY ROAD	77	9.3	10.3	1	0	0	9	
Campbell	NAPIER ROAD	79	2.1	3.1	1	0	0	9	5
Campbell	RECLUSE ROAD	82	13.4	14	1	0	0	9	
Campbell	TODD ROAD	97	3.3	4.3	1	0	0	9	4
Campbell	TRAIL CREEK ROAD	98	3.4	4.4	1	0	0	9	
Campbell	NORTH GARNER LAKE ROAD-U	38N	6.9	7.9	0	2	2	9	
Campbell	ADON ROAD	1	2.1	3.1	0	1	5	8.5	
Campbell	BISHOP ROAD	12	23	24	0	1	5	8.5	
Campbell	ADON ROAD	1	6.5	7.5	0	1	4	7.5	
Campbell	RECLUSE ROAD	82	4.7	5.7	0	1	4	7.5	
Campbell	BUFFALO CUT ACROSS ROAD	18	0.5	1.5	0	2	0	7	14
Campbell	COLLINS ROAD	23	4.5	5.5	0	2	0	7	
Campbell	EDWARDS ROAD(AKA ANTELOPE RD)	30	13	14	0	2	0	7	
Campbell	ELK CREEK ROAD	33	1.5	2.5	0	2	0	7	4
Campbell	HOE CREEK ROAD	54	7.5	8	0	2	0	7	5
Campbell	IVY CREEK ROAD	57	0.3	1.3	0	2	0	7	4
Campbell	RECLUSE ROAD	82	6.3	7.3	0	2	0	7	
Campbell	S-A ROAD	86	5.5	6.5	0	2	0	7	
Campbell	BISHOP ROAD	12	22	23	0	1	3	6.5	
Campbell	FAIRVIEW ROAD	34	0	1	0	1	3	6.5	32

Table B-3 Campbell County High-Risk Roads List (Cont)

Campbell	HAIGHT ROAD	44	0.2	1.2	0	1	3	6.5	2
Campbell	TIMBER CREEK ROAD	96	0.2	1.2	0	1	3	6.5	7
Campbell	NORTH GARNER LAKE ROAD-U	38N	5.8	6.8	0	1	3	6.5	22
Campbell	BISHOP ROAD	12	26.3	27.3	0	0	6	6	
Campbell	ADON ROAD	1	11.4	12.4	0	1	2	5.5	
Campbell	AMERICAN ROAD	3	3.5	4.5	0	1	2	5.5	
Campbell	BISHOP ROAD	12	2.5	3.5	0	1	2	5.5	
Campbell	BISHOP ROAD	12	4	5	0	1	2	5.5	
Campbell	CLARKELEN ROAD	22	2	3	0	1	2	5.5	
Campbell	HILIGHT ROAD	52	22	23	0	1	2	5.5	
Campbell	MCKENZIE ROAD	74	1.3	2.3	0	1	2	5.5	6
Campbell	MONTGOMERY ROAD	77	3.7	4.7	0	1	2	5.5	8
Campbell	RECLUSE ROAD	82	7.4	8.4	0	1	2	5.5	
Campbell	WILD HORSE ROAD	106	1	2	0	1	2	5.5	
									494

Table B-4. Campbell County Sign Request Form

ROAD SIGN PROGRAM (RSP)								
CAMPBELL REQUEST FORM								
PROJECT SIGN #	SIGNS				POSTS			
	QUANTITY	MUTCD #	SIZE		4"x4" WOOD		METAL BREAK AWAY	
					12'	14'	12'	14'
1	6	W1-1RT	30X30			404		
2	5	W1-1LT	30X30					
3	130	W1-2RT	36x36					
4	126	W1-2LT	36x36					
5	1	W1-3R	36"x36"					
6	1	W1-3L	36"x36"					
7	2	W1-4RT	30X30					
8	1	W1-4L	36x36					
9	10	W1-5RT	36x36					
10	11	W1-5LT	36x36					
11	7	W1-7	36x18					
14	46	W1-8	18X24					
15	4	W1-10R	36x36					
16	3	W1-10L	36x36					
17	7	W2-1	36x36					
18	27	W2-2	36x36					
19	9	W2-4	36x36					
20	16	W3-1	36x36					
21	2	W5-1	36x36					
22	2	W8-6	36x36					
23	4	W10-1	36" Dia.					
24	2	W1-10a-LT	36"x36"					
25	2	W11-10	36x36					
26	6	W13-1P 20 MPH	18x18					
27	2	W13-1P 25MPH	18x18					
28	12	W13-1P 30 MPH	18x18					
29	13	W13-1P 35 MPH	18x18					
30	35	W13-1P 40 MPH	18x18					
31	2	W13-1P 45 MPH	18x18					
TOTAL	494		TOTAL		0	404	0	0

Table B-5. Fremont County High-Risk Roads List

County	Road Name	Road No.	Beg MP	End MP	Fatal + Incapacitating Injury Crashes	Non-Incapacitating + Possible Injury Crashes	Property Damage Only	EPDO	# Signs
Fremont	ETHETE ROAD	335	1	2	3	4	5	46	
Fremont	BURMA ROAD	320	0	1	2	6	5	44	
Fremont	ETHETE ROAD	335	10	11	3	3	6	43.5	
Fremont	ETHETE ROAD	335	4	5	1	8	6	43	
Fremont	SOUTH FORK	346	2	3	3	3	2	39.5	29
Fremont	ETHETE ROAD	335	6	7	2	4	7	39	
Fremont	TROUT CREEK ROAD	347	0	1	3	2	5	39	31
Fremont	SQUAW CREEK ROAD-U	14	1	2	3	1	8	38.5	
Fremont	ETHETE ROAD	335	7	8	1	6	5	35	
Fremont	RIVERVIEW ROAD-U	54	3.5	4.5	2	1	13	34.5	9
Fremont	ETHETE ROAD	335	11	12	3	1	4	34.5	
Fremont	COAL MINE ROAD	209	1.3	2.3	3	1	2	32.5	
Fremont	ETHETE ROAD	335	5	6	0	7	8	32.5	
Fremont	ETHETE ROAD	335	2	3	1	5	5	31.5	
Fremont	ETHETE ROAD	335	0	1	2	2	2	27	34
Fremont	NORTH SECOND STREET (LANDER)-U	43	4	5	1	4	3	26	
Fremont	SOUTH FORK	346	3	4	1	4	3	26	
Fremont	HAPPY SPRINGS ROAD	395	0.9	1.9	1	3	5	24.5	
Fremont	ETHETE ROAD	335	8	9	1	2	7	23	
Fremont	WILLIAMS ROAD	12	1.2	2	2	1	1	22.5	
Fremont	NORTH SECOND STREET (LANDER)-U	43	3	4	1	3	3	22.5	5
Fremont	ETHETE ROAD	335	9	10	0	5	5	22.5	
Fremont	RIVERVIEW ROAD-U	54	7.3	8.3	2	0	4	22	
Fremont	EIGHT MILE ROAD	385	0	1	1	3	2	21.5	
Fremont	HAPPY SPRINGS ROAD	395	3	4	2	1	0	21.5	
Fremont	UNION PASS ROAD	240	0.3	1.3	1	2	5	21	
Fremont	SEVENTEEN MILE ROAD	334	0.3	1.3	1	2	4	20	
Fremont	WILLOW CREEK ROAD	414	0.5	1.5	2	0	2	20	
Fremont	MINTER LANE-U	405	19.3	20.3	2	0	1	19	

Table B-5. Fremont County High-Risk Roads List (Cont)

Fremont	HUTCHISON ROAD	272	0.1	1.1	1	1	6	18.5	
Fremont	RIVERVIEW ROAD-U	54	6.2	7.2	1	2	2	18	
Fremont	LOWER NORTH FORK ROAD	137	9.2	10.2	2	0	0	18	
Fremont	NORTH FORK-FT. WASHAKIE ROAD	345	0	1	1	2	2	18	
Fremont	TROUT CREEK ROAD	347	2	3	1	2	2	18	
Fremont	HAPPY SPRINGS ROAD	395	6.5	7.5	1	2	2	18	
Fremont	LOWER NORTH FORK ROAD	137	0	1	1	1	5	17.5	
Fremont	TROUT CREEK ROAD	347	1	2	1	2	1	17	
Fremont	BIG RIDGE LANE	351	1.6	2.6	1	2	1	17	
Fremont	BURMA ROAD	320	3.4	4.4	1	1	4	16.5	
Fremont	BIRCHFIELD LANE	140	1	2	1	2	0	16	
Fremont	BURMA ROAD	320	4.5	5.5	0	3	5	15.5	
Fremont	LYONS VALLEY ROAD	419	3.6	4.6	1	1	3	15.5	
Fremont	HAPPY SPRINGS ROAD	395	5	6	0	2	8	15	
Fremont	TWEED LANE-U	4	0	1	0	3	4	14.5	
Fremont	TWEED LANE-U	4	2	3	1	1	2	14.5	
Fremont	RIVERVIEW ROAD-U	54	5	6	1	1	2	14.5	
Fremont	ETHETE ROAD	335	3	4	1	1	2	14.5	
Fremont	NORTH PAVILLION ROAD	428	0.1	1.1	1	1	2	14.5	
Fremont	BASS LAKE ROAD	430	2	3	1	1	2	14.5	
Fremont	WEST PAVILLION ROAD	448	0.7	1.7	1	1	2	14.5	
Fremont	LYSITE-MONETA ROAD	176	4	5	1	0	5	14	
Fremont	ZUBER ROAD	496	0.3	1.3	1	0	5	14	
Fremont	ATLANTIC CITY ROAD (MAIN ST./ DEXTER AVE)	237	0.2	1.2	1	1	1	13.5	
Fremont	MINTER LANE-U	405	16	17	1	1	1	13.5	
Fremont	MINTER LANE-U	405	1.2	2.2	1	1	0	12.5	8
Fremont	LYONS VALLEY ROAD	419	0	1	1	1	0	12.5	
Fremont	DELFELDER ROAD-U	497	1.9	2.9	1	1	0	12.5	
Fremont	WARM SPRINGS CREEK	244A	3	4	1	1	0	12.5	
Fremont	BIRCHFIELD LANE	140	4.7	5.7	1	0	3	12	
Fremont	BURMA ROAD	320	2.4	3.4	0	2	5	12	
Fremont	HOOT OWL ROAD	362	2	3	1	0	3	12	
Fremont	SQUAW CREEK ROAD-U	14	3.5	4.5	1	0	2	11	

Table B-5. Fremont County High-Risk Roads List (Cont)

Fremont	HORSE CREEK ROAD	285	1.4	2.4	1	0	2	11	
Fremont	HORSE CREEK ROAD	285	2.7	3.7	1	0	2	11	
Fremont	PARADISE VALLEY ROAD	315	1.1	2.1	1	0	2	11	
Fremont	PARADISE VALLEY ROAD	315	2.1	3.1	1	0	2	11	
Fremont	TWO VALLEY ROAD	339	1	2	1	0	2	11	
Fremont	TUNNEL HILL ROAD	427	5	6	1	0	2	11	
Fremont	BURMA ROAD	320	1	2	0	1	7	10.5	
Fremont	HAPPY SPRINGS ROAD	395	4	5	0	1	7	10.5	
Fremont	RIVERVIEW ROAD-U	54	14.4	15.4	1	0	1	10	
Fremont	RIVERVIEW ROAD-U	54	16	17	1	0	1	10	
Fremont	RIVERVIEW ROAD-U	54	20	21	1	0	1	10	
Fremont	LOWER NORTH FORK ROAD	137	1	2	1	0	1	10	
Fremont	LOWER NORTH FORK ROAD	137	8	9	1	0	1	10	
Fremont	UNION PASS ROAD	240	4.9	5.9	1	0	1	10	
Fremont	PARADISE VALLEY ROAD	315	6	7	1	0	1	10	
Fremont	RAY LAKE ROAD	336	0	1	0	2	3	10	
Fremont	RAY LAKE ROAD	336	1	2	1	0	1	10	
Fremont	HAPPY SPRINGS ROAD	395	9.5	10	1	0	1	10	
Fremont	BASS LAKE ROAD	430	3	4	1	0	1	10	
Fremont	LYSITE-MONETA ROAD	176	1	2	0	2	2	9	
Fremont	UNION PASS ROAD	240	3.7	4.7	0	2	2	9	
Fremont	BRIDGER CREEK ROAD	259	7	8	1	0	0	9	
Fremont	PARADISE VALLEY ROAD	315	4.2	5.2	0	2	2	9	
Fremont	PATTISON FARMS ROAD	325	3.2	4	1	0	0	9	
Fremont	EAST PAVILLION ROAD	330	0	1	0	2	2	9	
Fremont	BIG RIDGE LANE	351	0.5	1.5	1	0	0	9	
Fremont	MINTER LANE-U	405	14	15	1	0	0	9	
Fremont	GABES ROAD	412	0.5	1.5	1	0	0	9	
Fremont	WILLOW CREEK ROAD	414	2.4	3.4	1	0	0	9	
Fremont	LYONS VALLEY ROAD	419	1.1	2.1	0	2	2	9	
Fremont	BUSHWACKER ROAD	432	1.1	2.1	1	0	0	9	
Fremont	KINNEAR SPUR	480	2.4	3	1	0	0	9	
Fremont	SQUAW CREEK ROAD-U	14	2.1	3.1	0	1	5	8.5	

Table B-5. Fremont County High-Risk Roads List (Cont)

Fremont	TWIN CREEK ROAD	19	1	2	0	2	1	8	
Fremont	CARPENTER ROAD	247	0	1	0	2	1	8	
Fremont	HORSE CREEK ROAD	285	8	9	0	2	1	8	
Fremont	BURMA ROAD	320	5.6	6.6	0	2	1	8	
Fremont	TWO VALLEY ROAD	339	4.1	5	0	2	1	8	
Fremont	COUNTRY ACRES ROAD	360	0.9	1.9	0	2	1	8	
Fremont	LYONS VALLEY ROAD	419	2.1	3.1	0	2	1	8	
Fremont	FISH HATCHERY ROAD	241	0	1	0	2	0	7	
Fremont	TWO VALLEY ROAD	339	0.5	1.5	0	2	0	7	
Fremont	NORTH PAVILLION ROAD	428	2.5	3.5	0	2	0	7	
Fremont	SPRING VALLEY DRIVE	138	0	1	0	1	3	6.5	
Fremont	BALDWIN CREEK ROAD	193	0.9	1.9	0	1	3	6.5	
Fremont	HORSE CREEK ROAD	285	6	7	0	1	3	6.5	
Fremont	PARADISE VALLEY ROAD	315	0	1	0	1	3	6.5	
Fremont	PARADISE VALLEY ROAD	315	9.4	10.4	0	1	3	6.5	
Fremont	LYONS VALLEY ROAD	419	6.1	7	0	1	3	6.5	
Fremont	KINNEN SPUR	480	1	2	0	1	3	6.5	
Fremont	STONE ROAD	13	0.2	1.2	0	1	2	5.5	
Fremont	NORTH FORK ROAD (MILFORD)	139	0.2	1	0	1	2	5.5	
Fremont	BALDWIN CREEK ROAD	193	3	4	0	1	2	5.5	
Fremont	COAL MINE ROAD	209	0.2	1.2	0	1	2	5.5	
Fremont	UNION PASS ROAD	240	2.5	3.5	0	1	2	5.5	
Fremont	HARRIS BRIDGE ROAD	306	2.8	3.8	0	1	2	5.5	
Fremont	RAY LAKE ROAD	336	5	6	0	1	2	5.5	
Fremont	TWO VALLEY ROAD	339	1.5	2.5	0	1	2	5.5	
Fremont	EDITH STREET-U	413	2.2	3.2	0	1	2	5.5	
Fremont	LYONS VALLEY ROAD	419	4.8	5.8	0	1	2	5.5	
Fremont	BASS LAKE ROAD	430	0.2	1.2	0	1	2	5.5	7
Fremont	BASS LAKE ROAD	430	8.3	9.3	0	1	2	5.5	
Fremont	BIRCHFIELD LANE	140	3.5	4.5	0	0	5	5	
Fremont	LYSITE-MONETA ROAD	176	3	4	0	0	5	5	
Fremont	HAPPY SPRINGS ROAD	395	2	3	0	0	5	5	
Fremont	PETERSON ROAD	463	0.7	1.7	0	0	5	5	
									123

Table B-6. Fremont County Sign Request Form

ROAD SIGN PROGRAM (RSP)							
FREMONT REQUEST FORM							
PROJECT SIGN #	SIGNS			POSTS			
	QUANTITY	MUTCD #	SIZE	4"x4" WOOD		METAL BREAK AWAY	
				12'	14'	12'	14'
	3	W1-1aLT 20 MPH	36x36	3	40		80
	3	W1-1aRT 20 MPH	36x36				
	2	W1-1aRT 25 MPH	36x36				
	2	W1-1aRL 25 MPH	36x36				
	1	W1-1aRL 35 MPH	36x36				
	1	W1-1aRL 35 MPH	36x36				
	1	W1-2RT	30X30				
	1	W1-2LT	30X30				
	1	W1-5RT	30X30				
	1	W1-5LT	30X30				
	80	W1-8	18X24				
	8	W2-1	30x30				
	13	W2-2	24x24				
	1	W3-1	30x30				
	2	W13-1P 35 MPH	18x18				
	3	R1-1	30x30				
TOTAL	123		TOTAL	3	40	0	80

Table B-7. Hot Springs County High-Risk Roads List

County	Road Name	Road No.	Beg MP	End MP	Fatal + Incapacitating Injury Crashes	Non-Incapacitating + Possible Injury Crashes	Property Damage Only	EPDO	# Signs
Hot Springs	BUFFALO CREEK ROAD	5	0.4	1.4	2	0	1	19	2
Hot Springs	UPPER EAST RIVER ROAD	8	2	3	1	1	1	13.5	
Hot Springs	SOUTH YELLOWSTONE ROAD	31	0	1	1	1	0	12.5	
Hot Springs	BLACK MOUNTAIN ROAD	6	8	9	1	0	1	10	4
Hot Springs	UPPER EAST RIVER ROAD	8	1	2	0	2	3	10	10
Hot Springs	SAND DRAW ROAD	18	1.2	2.2	1	0	1	10	2
Hot Springs	OWL CREEK ROAD	1	7.7	8.7	1	0	0	9	
Hot Springs	COWBOY MINE ROAD	23	1.2	2	1	0	0	9	6
Hot Springs	UPPER COTTONWOOD CR ROAD	10	5	6	0	2	0	7	2
Hot Springs	SUNNYSIDE LANE ROAD	27	3.4	4	0	2	0	7	
Hot Springs	SUNNYSIDE LANE ROAD	27	0.2	1.2	0	1	3	6.5	8
Hot Springs	OWL CREEK ROAD	1	4.5	5.5	0	1	2	5.5	16

Table B-8. Hot Springs County Sign Request Form

ROAD SIGN PROGRAM (RSP)							
HOT SPRINGS REQUEST FORM							
PROJECT SIGN #	SIGNS				POSTS		
	QUANTITY	MUTCD #	SIZE		4"x4" WOOD		METAL BREAK AWAY
					12'	14'	12'
1	2	W1-1RT	30X30		49		
2	2	W1-1LT	30X30				
3	12	W1-2RT	30X30				
4	12	W1-2LT	30X30				
5	1	W1-5RT	30X30				
6	1	W1-5LT	30X30				
7	18	W1-8	18X24				
8	1	W1-11RT	30X30				
9	1	W1-11LT	30X30				
TOTAL	50		TOTAL		49		

Table B-9. Laramie County High-Risk Roads List

County	Road Name	Road No.	Beg MP	End MP	Fatal + Incapacitating Injury Crashes	Non-Incapacitating + Possible Injury Crashes	Property Damage Only	EPDO	# SIGNS
Laramie		1623	9.6	10.6	2	3	3	31.5	
Laramie	RAILROAD/HILLSDALE RIDGE ROAD	2153	2.7	3.7	1	5	3	29.5	
Laramie	CHALK BLUFF/ "78" ROAD	2031	1	2	3	0	2	29	
Laramie	HILLSDALE NORTH ROAD/ MIDWAY	1432	0.3	1.3	3	0	0	27	
Laramie	PERSHING BLVD-U	2102	5.1	6.1	1	4	4	27	
Laramie	RAILROAD/HILLSDALE RIDGE ROAD	2153	0.1	1.1	1	4	4	27	16
Laramie	GILCHRIST ROAD	1091	1.1	2.1	1	4	0	23	6
Laramie	REGLAND ROAD	1501	14	15	2	1	1	22.5	
Laramie	DURHAM ROAD	1361	3.2	4.2	2	1	0	21.5	4
Laramie		1642	11.5	12.5	2	0	3	21	
Laramie	OLD HIGHWAY PINE BLUFFS WEST	2128	3.1	4.1	1	3	1	20.5	2
Laramie	OLINE ROAD	2041	15.1	16.1	2	0	1	19	
Laramie	OLD HIGHWAY BURNS WEST	2132	1	2	2	0	0	18	2
Laramie	RIDLEY ROAD	2201	1	2	2	0	0	18	
Laramie	KESLAR ROAD	2231	6.3	7.3	2	0	0	18	
Laramie	HARRIMAN ROAD	1021	3	4	0	4	2	16	
Laramie	RITZKE ROAD	2172	0.4	1.4	1	2	0	16	
Laramie		1623	5.2	6.2	1	1	3	15.5	4
Laramie	GILCHRIST ROAD	1091	5	6	1	1	2	14.5	
Laramie	REESE ROAD-U	1311	0.5	1.5	1	1	2	14.5	1
Laramie		1623	8.1	9.1	1	1	2	14.5	
Laramie	RIDLEY ROAD	2201	0	1	1	1	2	14.5	3
Laramie	HR RANCH ROAD	872	0.7	1.7	1	0	5	14	
Laramie		1612	2	3	0	4	0	14	4
Laramie		1642	2.2	3.2	1	1	1	13.5	
Laramie	OLINE ROAD	2041	17.8	18.8	1	1	1	13.5	
Laramie	CAMPSTOOL ROAD	2092	1.5	2.5	1	1	1	13.5	
Laramie	PERSHING BLVD-U	2102	4	5	1	1	1	13.5	

Table B-9. Laramie County High-Risk Roads List (Cont)

Laramie	FOUR MILE ROAD	2131	0	1	1	1	1	13.5	7
Laramie	RAILROAD/HILLSDALE RIDGE ROAD	2153	7.4	8.4	1	1	1	13.5	
Laramie	OLINE ROAD	2041	16.5	17.5	1	1	0	12.5	
Laramie	RAILROAD/HILLSDALE RIDGE ROAD	2153	1.7	2.7	0	3	2	12.5	
Laramie	PERSONS(AVE B-6)-U	208A	10	11	1	1	0	12.5	
Laramie	ROUNDTOP/TELEPHONE ROAD	1201	8.3	9.3	0	2	5	12	
Laramie		1433	2	3	1	0	3	12	
Laramie	GILCHRIST ROAD	1091	3	4	0	3	1	11.5	
Laramie		1642	5.7	6.7	1	0	2	11	
Laramie	FOUR MILE ROAD	2131	6.3	7.3	1	0	2	11	
Laramie	HARRIMAN ROAD	1021	2	3	1	0	1	10	5
Laramie	TRIMBLE ROAD	1462	4.2	5.2	1	0	1	10	
Laramie		1642	0.1	1.1	1	0	1	10	
Laramie	OLINE ROAD	2041	23.5	24.5	1	0	1	10	
Laramie	RAILROAD/HILLSDALE RIDGE ROAD	2153	6.2	7.2	1	0	1	10	
Laramie	ROUNDTOP/TELEPHONE/ROAD	1201	14	15	1	0	0	9	
Laramie	LITTLE BEAR ROAD	1232	2.5	3.5	1	0	0	9	
Laramie	INDIAN HILL ROAD	1282	3.4	4.4	1	0	0	9	4
Laramie	TRIMBLE ROAD	1462	7.8	8	1	0	0	9	
Laramie	REGLAND ROAD	1501	7	8	1	0	0	9	
Laramie		1593	4.4	5	1	0	0	9	
Laramie	STATE LINE ROAD	1643	2	3	1	0	0	9	
Laramie	LOUTH ROAD	2143	5.3	6	1	0	0	9	
Laramie	ROUNDTOP/TELEPHONE/ROAD	1201	9.4	10.4	0	2	1	8	
Laramie		1593	3.2	4.2	0	2	1	8	
Laramie	PERSHING BLVD-U	2102	6.5	7.5	0	2	1	8	
Laramie	TURQUOISE ROAD	695	0.7	1.7	0	2	0	7	2
Laramie	JORDAN ROAD	1062	6.7	7.7	0	2	0	7	
Laramie	ROUNDTOP/TELEPHONE/ROAD	1201	7.2	8.2	0	2	0	7	1
Laramie	KIRKBRIDE ROAD	1392	1.4	2	0	2	0	7	2
Laramie		1433	16.3	17.3	0	2	0	7	
Laramie	TRIMBLE ROAD	1462	0.1	1.1	0	2	0	7	
Laramie	STATE LINE ROAD	1643	0.7	1.7	0	2	0	7	
Laramie	PERSHING BLVD-U	2102	1	2	0	2	0	7	6

Table B-9. Laramie County High-Risk Roads List (Cont)

Laramie	RAILROAD/HILLSDALE RIDGE ROAD	2153	12.3	13.3	0	2	0	7	
Laramie	LINDEN ROAD	2272	1.3	2.3	0	2	0	7	4
Laramie	CAMPSTOOL ROAD	2092	8	9	0	1	3	6.5	
Laramie	RIDLEY ROAD	2201	2.5	3.5	0	1	3	6.5	
Laramie	ro	1091	4	5	0	0	6	6	
Laramie	WESTEDT ROAD	1321	0	1	0	1	2	5.5	1
Laramie		1491	0	1	0	1	2	5.5	2
Laramie		1612	5.9	6.9	0	1	2	5.5	
Laramie		1623	10.6	11	0	1	2	5.5	
Laramie	CAMPSTOOL ROAD	2092	9	10	0	1	2	5.5	
Laramie	CRYSTAL LAKE ROAD	2101	0.1	1	0	1	2	5.5	
Laramie	RAILROAD/HILLSDALE RIDGE ROAD	2153	4.5	5.5	0	1	2	5.5	
Laramie		2183	2	3	0	1	2	5.5	
Laramie	MEDITERRANEAN	110A	0.5	1	0	1	2	5.5	

Table B-10. Laramie County Sign Request Form

ROAD SIGN PROGRAM (RSP)								
LARAMIE COUNTY REQUEST FORM								
PROJECT SIGN #	SIGNS				POSTS			
	QUANTITY	MUTCD #	SIZE		4"x4" WOOD		METAL BREAK AWAY	
					12'	14'	12'	14'
1	1	W1-1LT	30X30				76	
2	10	W1-2RT	30X30					
3	11	W1-2LT	30X30					
4	1	W1-4L	30X30					
5	1	W1-5RT	30X30					
6	5	W1-7	48x24					
7	5	W1-6	48x24					
8	1	W2-1	24x24					
9	6	W2-2	24x24					
10	2	W2-4	24x24					
11	5	W3-1	30x30					
12	2	W5-2	30x30					
13	1	W8-3	30x30					
14	1	W13-1P 15 MPH	18x18					
15	5	OM-3L	12x36					
16	2	OM-3R	12x36					
17	12	R1-1	30x30					
18	3	R2-1 40 MPH	24x30					
19	1	R2-1 45 MPH	24x30					
20	1	R2-1 55 MPH	24x30					
TOTAL	76		TOTAL	0			76	

Table B-11. Sheridan County High-Risk Roads List

County	Road Name	Road No.	Beg MP	End MP	Fatal + Incapacitating Injury Crashes	Non-Incapacitating + Possible Injury Crashes	Property Damage Only	EPDO	# Signs
Sheridan	RED GRADE ROAD	26	0.3	1.3	2	1	4	25.5	2
Sheridan	HALFWAY LANE	71	0.9	1.9	2	1	0	21.5	
Sheridan	SOLDIER CREEK ROAD-U	74	2.3	3.3	1	3	1	20.5	
Sheridan	SOLDIER CREEK ROAD-U	74	4.6	5.6	1	2	4	20	
Sheridan	HERSEY ROAD	49	0.1	1.1	1	2	3	19	
Sheridan	BEAVER CREEK ROAD	87	2.4	3.4	2	0	1	19	
Sheridan	BEAVER CREEK ROAD	87	6.1	7.1	1	1	5	17.5	
Sheridan	TONGUE CANYON ROAD	92	2	3	0	4	3	17	
Sheridan	DUTCH CREEK ROAD	161	0.1	1.1	1	2	0	16	
Sheridan	PASAIC ROAD	255	1.3	2.3	1	2	0	16	
Sheridan	BIRD FARM ROAD	28	0	1	0	3	5	15.5	12
Sheridan	BECKTON ROAD	89	4	5	1	1	3	15.5	
Sheridan	UPPER PRAIRIE DOG ROAD	127	0	1	1	1	3	15.5	11
Sheridan	WAGON BOX ROAD	145	0.1	1.1	1	1	3	15.5	
Sheridan	TONGUE CANYON ROAD	92	3	4	1	1	2	14.5	
Sheridan	EAST RIDGE ROAD-U	139	2.5	3.5	0	3	4	14.5	
Sheridan	KRUSE CREEK ROAD	30	0	1	1	0	5	14	6
Sheridan	BIRD FARM ROAD	28	1	2	1	1	1	13.5	
Sheridan	UPPER PRAIRIE DOG ROAD	127	5.1	6	1	1	1	13.5	
Sheridan	TONGUE CANYON ROAD	92	1	2	0	3	2	12.5	
Sheridan	KRUSE CREEK ROAD	30	1	2	0	2	5	12	
Sheridan	SOLDIER CREEK ROAD-U	74	7	8	0	3	1	11.5	
Sheridan	BEAVER CREEK ROAD	87	7.7	8.7	0	3	1	11.5	

Table B-11. Sheridan County High Risk Roads List (Cont)

Sheridan	SOLDIER CREEK ROAD-U	74	8.5	9.5	0	2	4	11	
Sheridan	WILDCAT ROAD	84	0.1	1.1	1	0	2	11	5
Sheridan	BECKTON ROAD	89	0.5	1.5	0	2	4	11	
Sheridan	BRINTON ROAD	103	0	1	0	1	7	10.5	4
Sheridan	POMPEY CREEK ROAD	129	0	1	1	0	1	10	
Sheridan	PASS CREEK ROAD	144	12.5	13.5	1	0	1	10	
Sheridan	UPPER PODER RIVER ROAD	273	6	7	1	0	1	10	
Sheridan	SOLDIER CREEK ROAD-U	74	1	2	0	1	6	9.5	8
Sheridan	CAT CREEK ROAD	133	0	1	0	1	6	9.5	3
Sheridan	RED GRADE ROAD	26	1.8	2.8	0	2	2	9	
Sheridan	WOLF CREEK ROAD	67	5	6	0	2	2	9	
Sheridan	SOLDIER CREEK ROAD-U	74	3.5	4.5	0	2	2	9	
Sheridan	WILDCAT ROAD	84	1.5	2.5	0	2	1	8	
Sheridan	BECKTON ROAD	89	1.8	2.8	0	2	1	8	
Sheridan	COUTANT CREEK ROAD	114	1.5	2	0	2	1	8	
Sheridan	MOUNTAIN HOME ROAD	125	0.1	1	0	2	1	8	
Sheridan	BECKTON ROAD	89	11	12	0	1	4	7.5	
Sheridan	TONGUE CANYON ROAD	92	0	1	0	1	4	7.5	3
Sheridan	LOWER PRAIRIE DOG ROAD	1211	5	6	0	1	4	7.5	
Sheridan	S.R. - BUFFALO CREEK ROAD	86	10.4	11.4	0	2	0	7	
Sheridan	BECKTON ROAD	89	5.9	6.9	0	2	0	7	
Sheridan	FISH HATCHERY ROAD	6	0.2	1	0	1	3	6.5	
Sheridan	WILDCAT ROAD	84	2.6	3.6	0	1	3	6.5	
Sheridan	BRINTON ROAD	103	1.2	2.2	0	1	3	6.5	
Sheridan	LOWER PRAIRIE DOG ROAD	1211	6.9	7.9	0	1	3	6.5	
Sheridan	RED GRADE ROAD	26	9.3	10.3	0	1	2	5.5	
Sheridan	BIRD FARM ROAD	28	4.9	5.9	0	1	2	5.5	
Sheridan	BIG GOOSE CANYON ROAD	53	0	1	0	1	2	5.5	
Sheridan	UPPER CAT ROAD	64	3.1	4	0	1	2	5.5	
Sheridan	WOLF CREEK ROAD	67	3.7	4.7	0	1	2	5.5	9
Sheridan	UPPER ROAD	113	0.6	1.6	0	1	2	5.5	
Sheridan	LOWER PRAIRIE DOG ROAD	1211	3	4	0	1	2	5.5	
Sheridan	LOWER PRAIRIE DOG ROAD	1211	11	12	0	1	2	5.5	
									63

Table B-12. Sheridan County Sign Request Form

ROAD SIGN PROGRAM (RSP)								
Sheridan REQUEST FORM								
PROJECT SIGN #	SIGNS				POSTS			
	QUANTITY	MUTCD #	SIZE		4"x4" WOOD		METAL BREAK AWAY	
					12'	14'	12'	14'
1	2	W1-1RT	30X30				56	
2	2	W1-1LT	30X30					
3	7	W1-2RT	30X30					
4	8	W1-2LT	30X30					
5	1	W1-4L	30X30					
6	1	W1-4RT	30X30					
7	8	W1-5RT	30X30					
8	6	W1-5LT	30X30					
9	1	W1-6	48x24					
10	6	W1-8	18X24					
11	2	W2-2	24x24					
12	3	W2-4	24x24					
13	1	W2-5	30x30					
14	5	W3-1	30x30					
15	3	W5-1	30x30					
16	1	W5-3	30x30					
17	1	W7-3AP Next 1.5 Miles	24x18					
18	1	W7-3AP Next 2 Miles	24x18					
19	1	W8-3	30x30					
20	1	W13-1P 15 MPH	18x18					
21	2	W13-1P 20 MPH	18x18					
TOTAL	63		TOTAL		0		56	

Table B-13. Sublette County High-Risk Roads List

County	Road Name	Road No.	Beg MP	End MP	Fatal + Incapacitating Injury Crashes	Non-Incapacitating + Possible Injury Crashes	Property Damage Only	EPDO	# Signs
Sublette	FREMONT LAKE ROAD	154	2.2	3.2	3	3	12	49.5	
Sublette	NORTH PINEY/COTTONWOOD ROAD	143	0	1	2	1	3	24.5	2
Sublette	FREMONT LAKE ROAD	154	1.1	2.1	0	4	9	23	
Sublette	DANIEL-MERNA ROAD	112	10	11	2	1	0	21.5	
Sublette	BIG PINEY/CALPET ROAD	134	1	2	1	2	2	18	1
Sublette	INDUSTRIAL SITE ROAD	190	0	1	0	3	7	17.5	
Sublette	EHMAN ROAD	144	1	2	1	2	1	17	
Sublette	LUMAN ROAD	147	0.2	1.2	1	2	1	17	
Sublette	MIDDLE PINEY ROAD	111	3.5	4.5	1	1	2	14.5	
Sublette	GRANITE LANE	205	0	1	1	1	1	13.5	
Sublette	WILLOW LAKE ROAD	119	1.5	2.5	0	3	2	12.5	1
Sublette	PARADISE ROAD	136	4.5	5.5	1	1	0	12.5	
Sublette	EHMAN ROAD	144	0	1	0	3	2	12.5	
Sublette	BIG PINEY/CALPET ROAD	134	8	9	1	0	3	12	
Sublette	PARADISE ROAD	136	1	2	1	0	3	12	
Sublette	LUMAN ROAD	147	6	7	1	0	3	12	
Sublette	BIG PINEY/CALPET ROAD	134	21	22	0	3	1	11.5	
Sublette	WHELAN BRIDGE ROAD	222	0.2	1	1	0	2	11	
Sublette	COTTONWOOD/RYEGRASS ROAD	117	0.2	1.2	1	0	1	10	
Sublette	BIG SANDY/ELKHORN ROAD	118	9.2	10.2	1	0	1	10	
Sublette	BIG PINEY/CALPET ROAD	134	4.8	5.8	0	2	3	10	
Sublette	BIG PINEY/CALPET ROAD	134	16.7	17.7	1	0	1	10	
Sublette	BIG PINEY/CALPET ROAD	134	22	23	0	2	3	10	
Sublette	EHMAN ROAD	144	2	3	1	0	1	10	
Sublette	NORTH PINEY/COTTONWOOD ROAD	143	1.2	2.2	0	1	6	9.5	
Sublette	EAST GREEN RIVER ROAD	110	3.8	4.8	1	0	0	9	
Sublette	DELL CREEK ROAD	114	3.8	4	1	0	0	9	

Table B-13. Sublette County High-Risk Roads List (Cont)

Sublette	BIG SANDY/ELKHORN ROAD	118	34.7	35	1	0	0	9	
Sublette	WILLOW LAKE ROAD	119	9	10	0	2	2	9	
Sublette	NORTH COTTONWOOD RD	129	3.6	4.6	1	0	0	9	
Sublette	LANDER CUTOFF ROAD	132	10	11	1	0	0	9	
Sublette	MICKELSON LANE	141	2.7	3.7	1	0	0	9	
Sublette	NORTH PINEY/COTTONWOOD ROAD	143	12	13	1	0	0	9	
Sublette	NORTH PINEY/COTTONWOOD ROAD	143	13.5	14.5	1	0	0	9	
Sublette	FREMONT LAKE ROAD	154	0	1	0	0	9	9	3
Sublette	LA BARGE CREEK		14	15	1	0	0	9	
Sublette	FAYETTE/POLE CREEK ROAD	121	2	3	0	1	5	8.5	
Sublette	PINEDALE SOUTH ROAD	123	2	3	0	1	5	8.5	
Sublette	BOULDER SOUTH ROAD	106	1.4	2.4	0	2	1	8	
Sublette	MIDDLE PINEY ROAD	111	11	12	0	2	1	8	
Sublette	WILLOW LAKE ROAD	119	8	9	0	2	1	8	
Sublette	LANDER CUTOFF ROAD	132	9	10	0	2	1	8	
Sublette	PARADISE ROAD	136	0	1	0	0	8	8	
Sublette	PARADISE ROAD	136	8.9	9.9	0	2	1	8	
Sublette	REARDON DRAW ROAD	139	0.4	1.4	0	2	1	8	
Sublette	PARADISE ROAD	136	6.5	7.5	0	1	4	7.5	
Sublette	MIDDLE PINEY ROAD	111	12	13	0	2	0	7	
Sublette	MIDDLE PINEY ROAD	111	13.7	14.7	0	2	0	7	
Sublette	DANIEL-MERNA ROAD	112	2.6	3.6	0	2	0	7	
Sublette	COTTONWOOD/RYEGRASS ROAD	117	13.5	14.5	0	2	0	7	
Sublette	BOULDER LAKE ROAD	125	1	2	0	2	0	7	
Sublette	BIG PINEY/CALPET ROAD	134	20	21	0	2	0	7	
Sublette	NORTH PINEY/COTTONWOOD ROAD	143	2.4	3.4	0	2	0	7	
Sublette	PINEDALE SOUTH ROAD	123	1	2	0	1	3	6.5	
Sublette	BIG PINEY/CALPET ROAD	134	15	16	0	1	3	6.5	
Sublette	BIG PINEY/CALPET ROAD	134	23	24	0	1	3	6.5	
Sublette	PARADISE ROAD	136	2	3	0	1	3	6.5	
Sublette	PARADISE ROAD	136	12.3	13.3	0	1	3	6.5	
Sublette	DANIEL-MERNA ROAD	112	0.3	1.3	0	1	2	5.5	
Sublette	MERNA NORTH BEAVER ROAD	115	2	3	0	1	2	5.5	

Table B-13. Sublette County High-Risk Roads List (Cont)

Sublette	COTTONWOOD/RYEGRASS ROAD	117	5.9	6.9	0	1	2	5.5	
Sublette	BIG PINEY/CALPET ROAD	134	9	10	0	1	2	5.5	
Sublette	BIG PINEY/CALPET ROAD	134	13	14	0	1	2	5.5	
Sublette	NORTH PINEY/COTTONWOOD ROAD	143	3.7	4.7	0	1	2	5.5	
Sublette	NORTH PINEY/COTTONWOOD ROAD	143	7	8	0	1	2	5.5	
Sublette	SOUTH PINEY ROAD	151	2.3	3.3	0	1	2	5.5	
Sublette	PARADISE ROAD	136	7.5	8.5	0	0	5	5	
Sublette	PARADISE ROAD	136	13.8	14.8	0	0	5	5	
									7

Table B-14. Sublette County Sign Request Form

ROAD SIGN PROGRAM (RSP)								
SUBLETTE COUNTY REQUEST FORM								
PROJECT SIGN #	SIGNS				POSTS			
	QUANTITY	MUTCD #	SIZE		4"x4" WOOD		METAL BREAK AWAY	
					12'	14'	12'	14'
1	4	W1-2RT	30X30				7	
2	1	W1-2LT	30X30					1
3	1	W11-3	30X30					
4	1	W11-4	30X30					
TOTAL	7		TOTAL		0		7	1

Table B-15. Sweetwater County High-Risk Roads List

County	Road Name	Road No.	Beg MP	End MP	Fatal + Incapacitating Injury Crashes	Non-Incapacitating + Possible Injury Crashes	Property Damage Only	EPDO	# Signs
Sweetwater	BLAIRTOWN ROAD-U	51	2.3	3.3	6	2	7	68	6
Sweetwater	GOOKIN-WHITE MOUNTAIN ROAD-U	69	0.3	1.3	1	5	4	30.5	7
Sweetwater	CHILTON ROAD/TRI TERRITORIAL	17	25.5	26.5	3	0	0	27	
Sweetwater	RELIANCE ROAD/RELIANCE MAIN STREET	42	0	1	0	4	10	24	7
Sweetwater	WAMSUTTER-CROOKS GAP SOUTH	23S	4.4	5.4	2	1	2	23.5	
Sweetwater	WHITE MOUNTAIN ROAD-U	53	2	3	1	4	0	23	
Sweetwater	YELLOWSTONE ROAD-U	58	3.2	4.2	1	3	3	22.5	6
Sweetwater	BLAIRTOWN ROAD-U	51	3.4	4.4	1	2	6	22	
Sweetwater	WAMSUTTER-CROOKS GAP SOUTH	23S	0.2	1.2	2	0	3	21	1
Sweetwater	OLD LITTLE AMERICA ROAD	2	1	2	1	3	1	20.5	6
Sweetwater	WHITE MOUNTAIN ROAD-U	53	8.5	9.5	2	0	2	20	
Sweetwater	EIGHTEEN MILE ROAD	49	32.7	33	2	0	0	18	2
Sweetwater	GOOKIN-WHITE MOUNTAIN ROAD-U	69	2.7	3.7	1	2	2	18	
Sweetwater	FLAMING GORGE ROAD	33	3.5	4.5	1	2	1	17	
Sweetwater	WINTON ROAD	66	3	4	1	2	0	16	
Sweetwater	EDEN RYEPATCH ROAD	12G	1.3	2.3	1	2	0	16	
Sweetwater	EDEN RYEPATCH ROAD	12G	3.8	4	1	2	0	16	
Sweetwater	YELLOWSTONE ROAD-U	58	4.2	5.2	0	3	5	15.5	
Sweetwater	WAMSUTTER-CROOKS GAP NORTH	23N	2.9	3.9	1	1	3	15.5	
Sweetwater	WAMSUTTER-CROOKS GAP NORTH	23N	13	14	1	1	2	14.5	
Sweetwater	GOOKIN-WHITE MOUNTAIN ROAD-U	69	1.6	2.6	0	2	7	14	
Sweetwater	BLUE RIM ROAD	5	5.2	6.2	1	1	1	13.5	
Sweetwater	ALLIED CHEMICAL ROAD	40	0	1	1	1	1	13.5	1
Sweetwater	QUEALY ROAD-U	50	1	2	1	1	1	13.5	7
Sweetwater	WAMSUTTER-CROOKS GAP SOUTH	23S	5.9	6.9	1	1	1	13.5	
Sweetwater	SUPERIOR CUTOFF ROAD	18	8.1	9.1	1	1	0	12.5	4
Sweetwater	ASPEN MOUNTAIN ROAD	27	3.5	4.5	1	1	0	12.5	15
Sweetwater	EXXON PLANT ROAD	86	2	3	1	1	0	12.5	9

Table B-15. Sweetwater County High-Risk Roads List (Cont)

Sweetwater	BITTER CREEK NORTH ROAD	19N	0.2	1.2	1	1	0	12.5	6
Sweetwater	STAUFFER CHEMICAL ROAD	6	1.5	2.5	0	2	5	12	
Sweetwater	WHITE MOUNTAIN ROAD-U	53	4.5	5.5	0	3	1	11.5	
Sweetwater	NINE MILE ROAD	15	2.3	3.3	0	2	4	11	19
Sweetwater	WHITE MOUNTAIN ROAD-U	53	7.5	8.5	1	0	2	11	
Sweetwater	RELIANCE ROAD/RELIANCE MAIN STREET	42	2	3	0	1	7	10.5	
Sweetwater	BLUE RIM ROAD	5	0	1	0	2	3	10	7
Sweetwater	LITTLE FIREHOLE ROAD	9	7.2	8.2	0	2	3	10	
Sweetwater	NINE MILE ROAD	15	8	9	0	2	3	10	
Sweetwater	ASPEN MOUNTAIN ROAD	27	7	8	1	0	1	10	
Sweetwater	FLAMING GORGE ROAD	33	11	12	1	0	1	10	
Sweetwater	YELLOWSTONE ROAD-U	58	6.5	7.5	0	2	3	10	
Sweetwater	WAMSUTTER-CROOKS GAP SOUTH	23S	1.5	2.5	0	2	3	10	
Sweetwater	OLD LITTLE AMERICA ROAD	2	2.2	3.2	0	2	2	9	
Sweetwater	LITTLE FIREHOLE ROAD	9	5.1	6.1	1	0	0	9	
Sweetwater	LITTLE FIREHOLE ROAD	9	6.1	7.1	1	0	0	9	
Sweetwater	FOURTEEN MILE ROAD	14	3.2	4.2	1	0	0	9	5
Sweetwater	NINE MILE ROAD	15	12.3	13.3	1	0	0	9	
Sweetwater	CHILTON ROAD/TRI TERRITORIAL	17	3.8	4.8	0	2	2	9	4
Sweetwater	CHILTON ROAD/TRI TERRITORIAL	17	6.8	7.8	1	0	0	9	
Sweetwater	CHILTON ROAD/TRI TERRITORIAL	17	14.3	15.3	1	0	0	9	
Sweetwater	LUMAN ROAD	20	9.2	10.2	1	0	0	9	2
Sweetwater	BAIROIL ROAD	22	3.3	4.3	1	0	0	9	14
Sweetwater	PATRICK DRAW ROAD	24	1.1	2.1	1	0	0	9	
Sweetwater	LITTLE BITTER CREEK ROAD	29	0	1	1	0	0	9	
Sweetwater	LITTLE BITTER CREEK ROAD	29	18	19	1	0	0	9	
Sweetwater	FLAMING GORGE ROAD	33	6.9	7.9	1	0	0	9	
Sweetwater	FLAMING GORGE ROAD	33	31.6	32.6	1	0	0	9	
Sweetwater	NORTH BAXTER ROAD	43	0	1	1	0	0	9	
Sweetwater	SALT WELLS ROAD	48	9.7	10	1	0	0	9	1
Sweetwater	EIGHTEEN MILE ROAD	49	8.1	9.1	1	0	0	9	
Sweetwater	WHITE MOUNTAIN ROAD-U	53	6.1	7.1	1	0	0	9	
Sweetwater	YELLOWSTONE ROAD-U	58	5.5	6.5	0	2	2	9	
Sweetwater	STAUFFER PICNIC GROUNDS ROAD	68	2.8	3	1	0	0	9	

Table B-15. Sweetwater County High-Risk Roads List (Cont)

Sweetwater	EDEN EAST 1ST NORTH ROAD (Inset)	12D	2	3	1	0	0	9	3
Sweetwater	EDEN EAST 3RD NORTH ROAD	12F	0.3	1	1	0	0	9	5
Sweetwater	EDEN NORTH 1ST EAST ROAD (Inset)	12N	0.6	1	1	0	0	9	
Sweetwater	BITTER CREEK NORTH ROAD	19N	15.2	16.2	1	0	0	9	
Sweetwater	BITTER CREEK SOUTH ROAD	19S	6.3	7.3	1	0	0	9	
Sweetwater	WAMSUTTER-CROOKS GAP NORTH	23N	40.8	41.8	1	0	0	9	
Sweetwater	NINE MILE ROAD	15	3.6	4.6	0	1	5	8.5	
Sweetwater	LITTLE FIREHOLE ROAD	9	9	10	0	2	1	8	
Sweetwater	ASPEN MOUNTAIN ROAD	27	9.9	10.9	0	2	1	8	
Sweetwater	EXXON PLANT ROAD	86	3	4	0	2	1	8	
Sweetwater	EDEN RYEPATCH ROAD	12G	0	1	0	1	4	7.5	11
Sweetwater	LITTLE FIREHOLE ROAD	9	3	4	0	2	0	7	
Sweetwater	ASPEN MOUNTAIN ROAD	27	4.6	5.6	0	2	0	7	
Sweetwater	FLAMING GORGE ROAD	33	0.3	1.3	0	2	0	7	38
Sweetwater	PERU CUTOFF ROAD	37	2.8	3.8	0	2	0	7	
Sweetwater	WINTON ROAD	66	1.5	2.5	0	2	0	7	4
Sweetwater	BITTER CREEK SOUTH ROAD	19S	49.5	50	0	2	0	7	
Sweetwater	WAMSUTTER-CROOKS GAP NORTH	23N	29.6	30.6	0	2	0	7	
Sweetwater	WAMSUTTER-CROOKS GAP NORTH	23N	43	44	0	2	0	7	
Sweetwater	McKINNON ROAD	1	25.6	26.6	0	1	3	6.5	
Sweetwater	RELIANCE ROAD/RELIANCE MAIN STREET	42	1	2	0	1	3	6.5	
Sweetwater	WAMSUTTER-CROOKS GAP NORTH	23N	22.5	23.5	0	1	3	6.5	
Sweetwater	NINE MILE ROAD	15	5.9	6.9	0	0	6	6	
Sweetwater	McKINNON ROAD	1	16.3	17.3	0	1	2	5.5	17
Sweetwater	STAUFFER CHEMICAL ROAD	6	0.5	1.5	0	1	2	5.5	6
Sweetwater	TEXASGULF SULPHUR ROAD	11	5.6	6.6	0	1	2	5.5	4
Sweetwater	NINE MILE ROAD	15	7	8	0	1	2	5.5	
Sweetwater	CHILTON ROAD/TRI TERRITORIAL	17	11.3	12.3	0	1	2	5.5	
Sweetwater	BAR "X" ROAD	21	4	5	0	1	2	5.5	10
Sweetwater	BLAIRTOWN ROAD-U	51	6.7	7	0	1	2	5.5	
Sweetwater	BITTER CREEK SOUTH ROAD	19S	20.6	21.6	0	1	2	5.5	
Sweetwater	WAMSUTTER-CROOKS GAP NORTH	23N	0	1	0	1	2	5.5	8
									235

Table B-16. Sweetwater County Sign Request Form

ROAD SIGN PROGRAM (RSP)								
SWEETWATER REQUEST FORM								
PROJECT SIGN #	SIGNS				POSTS			
	QUANTITY	MUTCD #	SIZE		4"x4" WOOD		METAL BREAK AWAY	
					12'	14'	12'	14'
1	6	W1-1RT	30X30			159		61
2	6	W1-1LT	30X30					
3	38	W1-2RT	30X30					
4	34	W1-2LT	30X30					
5	4	W1-4RT	30X30					
6	1	W1-4L	30X30					
7	12	W1-5RT	30X30					
8	7	W1-5LT	30X30					
9	2	W1-7	48x24					
10	3	W1-6	48x24					
11	3	W2-4	30x30					
12	2	W2-5	30x30					
13	1	W3-1a	30x30					
14	1	W3-5 35MPH	36x36					
15	5	W7-1a	30x30					
16	2	W7-3aP 9 Miles	24x18					
17	2	W8-1	30x30					
18	4	W8-3	30x30					
19	1	W8-12	30x30					
20	1	W11-3	30x30					
21	5	W11-4	30x30					
22	3	W11-10	30x30					
23	2	W13-1P 20 MPH	18x18					
24	2	W13-1P 25MPH	18x18					

Table B-16. Sweetwater County Sign Request Form (Cont)

25	3	W13-1P 30 MPH	18x18					
26	4	W13-1P 35 MPH	18x18					
27	3	W13-1P 40 MPH	18x18					
28	8	W13-1P 45 MPH	18x18					
29	2	W14-1	30x30					
30	1	W14-2	30x30					
31	1	W7-3aP Next 1/2 Mile	24x18					
32	1	W7-3aP Next 1.5 Mile	24x18					
33	2	W7-3aP Next 13 Mile	24x18					
34	8	R1-1	30x30					
35	6	R1-2	36x36x36					
36	2	R2-1 10 MPH	24x30					
37	5	R2-1 20 MPH	30x36					
38	1	R2-1 25 MPH	24x30					
39	7	R2-1 30 MPH	24x30					
40	8	R2-1 30 MPH	30x36					
41	2	R2-1 35 MPH	24x30					
42	3	R2-1 35 MPH	30x36					
43	1	R2-1 40 MPH	24x30					
44	11	R2-1 40 MPH	30x36					
45	5	R2-1 45 MPH	24x30					
46	8	R2-1 45 MPH	30x36					
47	3	R2-1 55 MPH	30x36					
48	1	R2-1 55 MPH	24x30					
49	1	R2-1 65 MPH	30x36					
50	6	R4-7a	24x30					

TOTAL**250****TOTAL****0**

159

0

61

Table B-17. Washakie County High-Risk Roads List

County	Road Name	Road No.	Beg MP	End MP	Fatal + Incapacitating Injury Crashes	Non-Incapacitating + Possible Injury Crashes	Property Damage Only	EPDO	# Signs
Washakie	LOWER NOWOOD ROAD	47	2.6	3.6	2	0	1	19	21
Washakie	ROAD 13	R13	0	1	1	2	0	16	
Washakie	ROAD 10/WASHAKIE 10	R10	0	1	1	0	3	12	1
Washakie	LOWER NOWOOD ROAD	47	8	9	1	0	2	11	
Washakie	TEN SLEEP/HYATTVILLE ROAD	54	2	3	1	0	1	10	12
Washakie	LOWER NOWOOD ROAD	47	11	12	1	0	0	9	
Washakie	LOWER NOWOOD ROAD	47	15	16	1	0	0	9	
Washakie	OLD TEN SLEEP HIGHWAY	580A	6.2	7	1	0	0	9	
Washakie	ROAD 10/WASHAKIE 10	R10	2	3	0	2	1	8	
Washakie	LANE 12/BANJO FLAT ROAD-U	L12	1.5	2.5	0	1	4	7.5	
Washakie	TEN SLEEP/HYATTVILLE ROAD	54	3.1	4.1	0	2	0	7	
Washakie	LOWER NOWOOD ROAD	47	6.3	7.3	0	1	3	6.5	
Washakie	NOWATER/NOWOOD ROAD	77	1.2	2	0	1	3	6.5	
Washakie	LOWER NOWOOD ROAD	47	13	14	0	1	2	5.5	
									34

Table B-18. Washakie County Sign Request Form

ROAD SIGN PROGRAM (RSP)								
WASHAKIE REQUEST FORM								
PROJECT SIGN #	SIGNS				POSTS			
	QUANTITY	MUTCD #	SIZE		4"x4" WOOD		METAL BREAK AWAY	
				12'	14'	12'	14'	
1	8	W1-2RT	30X30				20	2
2	12	W1-2LT	30X30					
3	2	W11-3	24x24					
4	12	W13-1P 30 MPH	18x18					
TOTAL	34		TOTAL		0		20	2

Table B-19. Weston County High-Risk Roads List

County	Road Name	Road No.	Beg MP	End MP	Fatal + Incapacitating Injury Crashes	Non-Incapacitating + Possible Injury Crashes	Property Damage Only	EPDO	# SIGNS
Weston	OLD US 85	1A	4.4	5.4	2	0	1	19	
Weston	BARTON	75	0.6	1.6	1	1	2	14.5	12
Weston	OLD US 85	1A	7.3	8.3	1	1	1	13.5	
Weston	BEAVER CREEK ROAD (STOCKDALE)	6	0	1	0	2	6	13	32
Weston	GREENHOUSE ROAD	68	0.2	1	1	0	2	11	14
Weston	SALT CREEK ROAD	23	0	1	0	2	3	10	
Weston	SALT CREEK ROAD	23	1.7	2.7	0	2	3	10	36
Weston	MORRISSEY ROAD (NEWCASTLE)	3	8.5	9.5	1	0	0	9	
Weston	GREEN MOUNTAIN ROAD (SKULL CREEK)	11	8	9	1	0	0	9	7
Weston	BEAVER CREEK ROAD (STOCKDALE)	6	2.4	3.4	0	2	1	8	
Weston	GRIEVES ROAD (FISHER)	5	4	5	0	2	0	7	16
Weston	RAVEN CREEK ROAD (POPHAM)	18	22.5	23	0	2	0	7	
Weston	OLD US 85	1A	0	1	0	2	0	7	
Weston	MORRISSEY ROAD (NEWCASTLE)	3	0.1	1.1	0	1	3	6.5	13
Weston	SKULL CREEK ROAD (PZINSKI-HORTON)	14	3.5	4.5	0	1	3	6.5	62
Weston	SKULL CREEK ROAD (PZINSKI-HORTON)	14	18.1	19	0	1	3	6.5	
Weston	OLD US 85 CUTACROSS ROAD	1	0.1	1	0	1	2	5.5	7
Weston	RAVEN CREEK ROAD (POPHAM)	18	1	2	0	1	2	5.5	9
Weston	PAINTED HILLS ROAD/KENWOOD DR.	71	2	3	0	1	2	5.5	36
Weston	PAINTED HILLS ROAD/KENWOOD DR.	71	3	4	0	1	2	5.5	
									244

Table B-20. Weston County Sign Request Form

ROAD SIGN PROGRAM (RSP)								
WESTON REQUEST FORM								
PROJECT SIGN #	SIGNS				POSTS			
	QUANTITY	MUTCD #	SIZE		4"x4" WOOD		METAL BREAK AWAY	
					12'	14'	12'	14'
1	2	W1-1RT	30X30				194	
2	2	W1-1LT	30X30					
3	11	W1-1aRT 25 MPH	36x36					
4	9	W1-1a LT 25 MPH	36x36					
5	1	W1-1a RT 30 MPH	36x36					
6	1	W1-1a LT30 MPH	36x36					
7	6	W1-2aRT 25 MPH	36x36					
8	6	W1-2aLT 25 MPH	36x36					
9	3	W1-2a RT 35 MPH	36x36					
10	3	W1-2a LT 35 MPH	36x36					
11	2	W1-2RT	30X30					
12	2	W1-2LT	30X30					
13	1	W1-3 RT	30x30					
14	1	W1-3 LT	30x30					
15	1	W1-4RT	30X30					
16	1	W1-4L	30X30					
17	13	W1-5RT	30X30					
18	13	W1-5LT	30X30					
19	2	W1-6	48x24					
20	100	W1-8	18x24					
21	22	W2-4	30x30					
22	3	W3-1	30x30					
23	2	W7-1	30X30					
24	11	W7-6	30x30					
26	7	W13-1P 25MPH	18x18					
27	1	W13-1P 35 MPH	18x18					
28	16	R1-1	30x30					
29	2	R1-2	36x36x36					
TOTAL	244		TOTAL		0	0	194	0