

NORTH DAKOTA GRAIN AND OILSEED TRANSPORTATION STATISTICS 2008-09

Kimberly Vachal

Advanced Research Fellow

Laurel Benson

Research Project Specialist

Upper Great Plains Transportation Institute
North Dakota State University
Fargo, North Dakota



in cooperation with

North Dakota Wheat Commission

Bismarck, ND

North Dakota Public Service Commission

Bismarck, ND

With special thanks to the North Dakota grain elevator industry for providing this data monthly.

Preface

The 2008-09 North Dakota Grain and Oilseed Transportation Statistics Report was prepared by Kimberly Vachal and Laurel Benson, Upper Great Plains Transportation Institute. The authors gratefully acknowledge the desktop publishing assistance of Bev Trittin.

This report represents a continuation of analysis concerned with the patterns and methods of distributing grains and oilseeds from North Dakota. This series began with the analysis of 1956-57 data and was published in Agricultural Economics Reports 15, 17, 44, 56, and 86 and Agricultural Experiment Station Bulletin 462. The compilation and analysis of data for the year 1967-68 in this series was assumed by the Upper Great Plains Transportation Institute. Also, the data representing the 1967-68 period were the first results of the requirements of the North Dakota Public Service Commission that all North Dakota elevators report monthly movements of grains and oilseeds by truck and rail. Prior to 1967-68, these data had been estimated from questionnaires completed by a sample of country elevators.

North Dakota State Wheat Commission

Harlan Klein, Chair, District 1
Louis Kuster, District 2
David Clough, District 3
Fran Leiphon, Vice Chair, District 4
Greg Svenningsen, District 5
Brian O'Toole, District 6
Bruce Freitag, Commissioner-at-Large

Neal Fisher, Administrator
Jim Peterson, Marketing Director
Erica Olson, Marketing Specialist

www.ndwheat.com

North Dakota Public Service Commission

Commissioners:

Kevin Cramer, Chairman
Tony Clark
Brian Kalk

Executive Director:

Illona Jeffcoat-Sacco

CONTENTS

North Dakota Grain and Oilseed Transportation Statistics	i
Objective of Report.....	i
Scope of Report.....	i
Source of Data.....	i
Organization of the Remainder of the Report	i
North Dakota Crop Reporting Districts and Counties.....	ii
Total Grain and Oilseed Shipments.....	1
Hard Red Spring Wheat.....	11
Durum	19
Barley	27
Sunflower	35
Soybeans	43
Corn.....	51
Canola	59
Dry Edible Beans	67
Dry Edible Peas.....	75

NORTH DAKOTA GRAIN AND OILSEED TRANSPORTATION STATISTICS 2008-09

Objective of Report

This report represents a continuation of analysis concerned with the patterns and methods of distributing grain from North Dakota. The collection and compilation of this type of data began in 1956-57. The objectives of this report, like prior reports, are to provide the necessary database for identifying trends in the distribution of grain and oilseeds from North Dakota.

Scope of Report

Data are tabulated according to major characteristics which typically describe commodity flows. The major shipment characteristics considered are destination, mode, origin, time and commodity. These characteristics are defined as follows:

- **Destination:** Minneapolis-St. Paul, Duluth-Superior, Pacific Northwest (ID, OR, WA), Other Minnesota/Wisconsin, Midland & Gulf states (AR, AZ, CA, CO, IA, KS, LA, MO, MT, NE, NM, NV, OK, SD, TX, and WY), North Dakota and other destinations.
- **Mode:** Rail or truck. Rail includes Commodity Credit Corporation shipments.
- **Origin:** The nine crop reporting districts in North Dakota (Figure 1).
- **Time:** By month, from July 2008 to June 2009, and previous years.
- **Commodity:** Hard red spring wheat, durum, barley, sunflower, soybeans, corn, canola, dry edible beans, and dry edible peas.

Source of Data

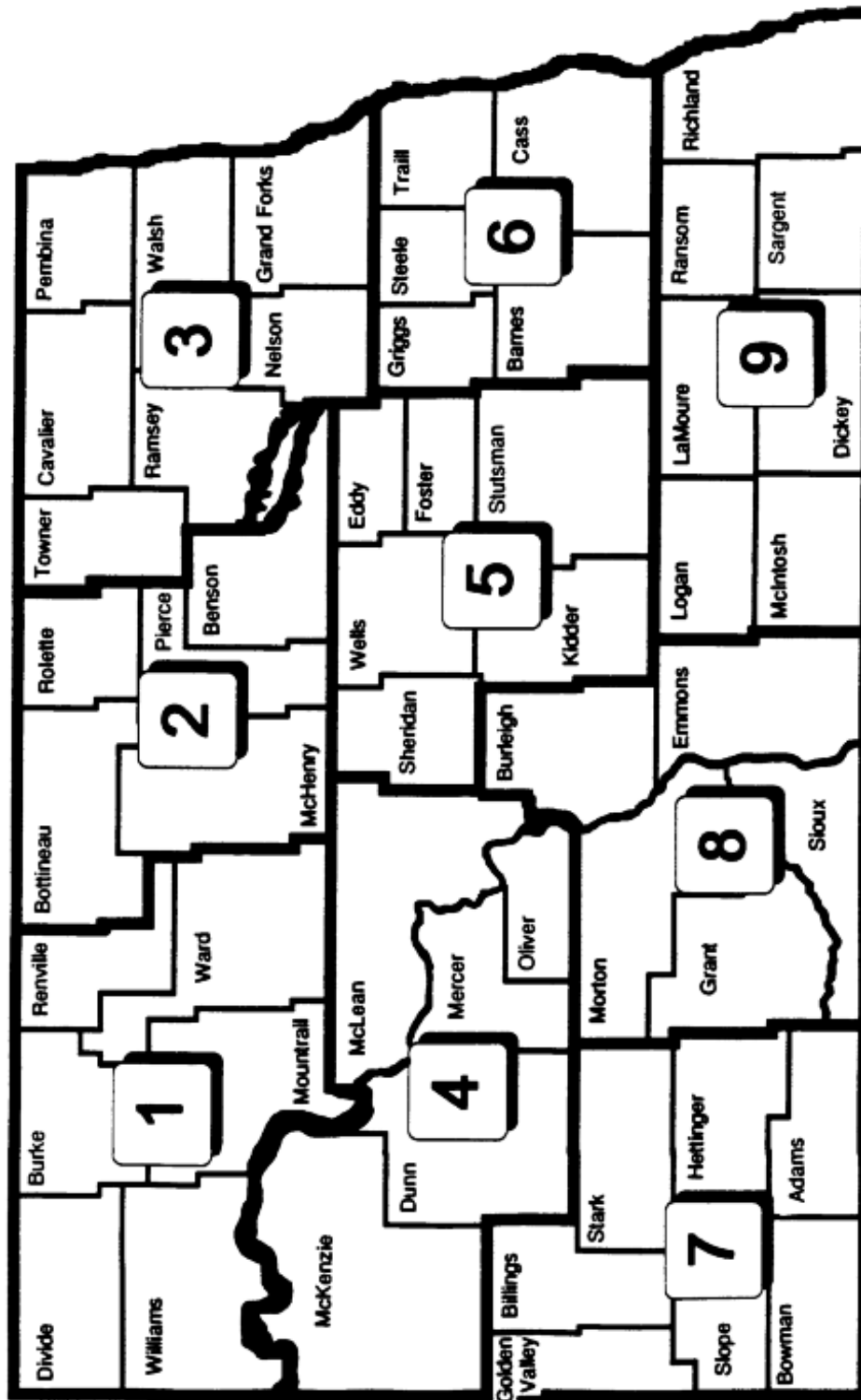
The data used to analyze North Dakota grain distribution patterns for the period July 2008 through June 2009 were obtained from all country elevators in North Dakota. The data source is the North Dakota Public Service Commission's "Grain Movement Report." Every country elevator in North Dakota is required under state statute to assemble and submit a "Grain Movement Report" to the Public Service Commission on a monthly basis.

Organization of the Remainder of the Report

The same general commodity flow characteristics are considered in this report as in previous years' reports. Flow patterns for each type of grain are described in separate sections in the following order: (1) Total Grain and Oilseed Shipments, (2) Hard Red Spring Wheat, (3) Durum, (4) Barley, (5) Sunflower, (6) Soybeans, (7) Corn, (8) Canola, (9) Dry Edible Beans, and (10) Dry Edible Peas.

Some small inconsistencies in totals may be noted when comparing tables and graphs due to rounding error.

2008-09 totals are preliminary, representing 99 percent of the required reports.

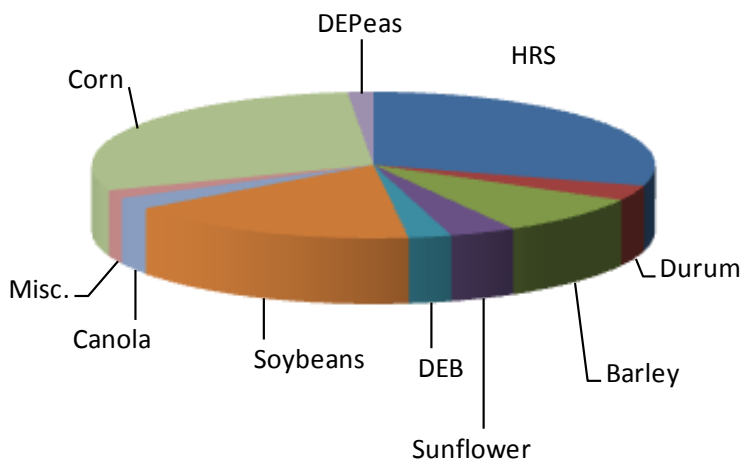


North Dakota Crop Reporting Districts and Counties

TOTAL GRAIN & OILSEED

YEAR	HRS	Durum	Barley	Sunflower	Soybeans	Canola	Misc.	Corn	DEB	DEPeas	TOTAL
2000-01	200,068 37%	77,025 14%	84,531 16%	38,194 7%	49,617 9%	20,468 3%	17,958 4%	51,130 9%			543,021 100%
2001-02	197,644 39%	61,242 12%	68,655 13%	32,042 6%	61,228 12%	18,527 4%	18,202 4%	46,827 9%			510,681 100%
2002-03	193,462 38%	45,327 9%	61,485 12%	32,708 6%	82,784 16%	18,340 4%	16,900 3%	60,147 12%			514,809 100%
2003-04	243,408 39%	53,946 9%	80,768 13%	38,830 6%	87,260 14%	18,075 3%	9,783 2%	73,981 12%			620,951 100%
2004-05	253,110 47%	45,518 9%	64,569 12%	19,470 4%	66,732 12%	13,505 3%	12,875 2%	56,821 11%			538,417 100%
2005-06	232,312 39%	57,993 10%	54,745 9%	22,850 4%	82,575 14%	16,066 3%	22,866 4%	94,619 16%			589,950 100%
2006-07	229,280 36%	40,850 6%	51,577 8%	26,590 4%	126,238 20%	15,372 2%	21,846 3%	122,159 19%			641,091 100%
2007-08	263,465 35%	47,900 6%	69,403 9%	25,668 3%	128,838 1%	17,788 17%	18,507 3%	174,058 2%			752,996 100%
2008-09	192,735 30%	21,911 3%	57,230 9%	24,820 4%	110,207 17%	17,031 3%	11,866 2%	189,900 29%	15,972 3%	9,675 2%	651,347 100%

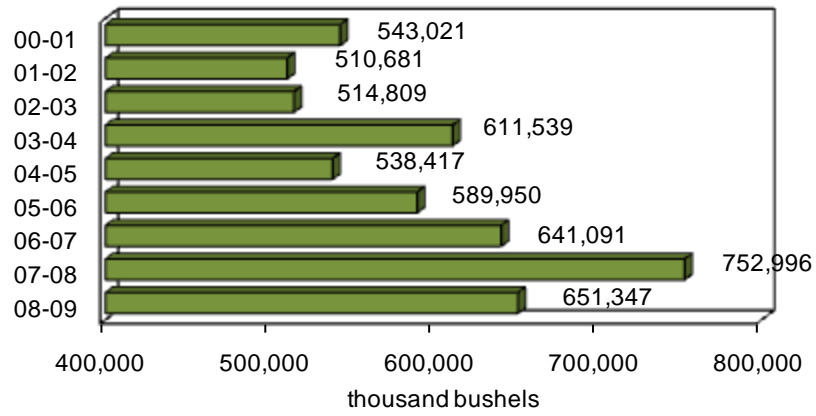
ALL SHIPMENTS by commodity, 2008-09



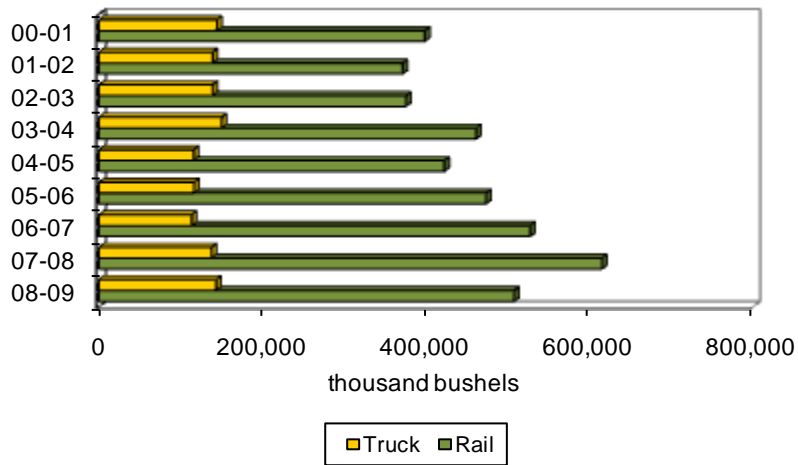
**NORTH DAKOTA GRAIN AND OILSEED SHIPMENTS
BY DESTINATION
2000-01 to 2008-09
thousand bu.**

YEAR	Minneapolis- St. Paul	Duluth- Superior	PNW	North Dakota	Other Minn. & Wisconsin	Midland & Gulf	Other	TOTAL
2000-01	130,574 24%	57,280 11%	70,930 13%	93,763 17%	31,870 6%	60,258 11%	98,341 18%	543,021 100%
2001-02	117,409 23%	54,036 11%	80,732 16%	86,026 17%	33,349 7%	41,638 8%	97,505 19%	510,681 100%
2002-03	113,050 22%	52,384 10%	71,270 14%	91,994 18%	41,515 8%	43,606 9%	100,979 20%	514,809 100%
2003-04	149,831 25%	48,693 8%	116,580 19%	97,823 16%	59,332 10%	47,612 8%	91,691 15%	611,539 100%
2004-05	131,520 24%	45,434 8%	103,189 19%	82,805 15%	36,832 7%	46,273 9%	92,306 17%	538,417 100%
2005-06	111,197 19%	51,261 9%	142,628 24%	87,849 15%	42,826 7%	48,845 8%	105,356 18%	589,950 100%
2006-07	114,485 18%	31,509 5%	219,154 34%	88,595 14%	38,061 6%	46,827 7%	102,460 16%	641,091 100%
2007-08	126,887 17%	42,338 6%	24,1247 32%	116,164 15%	34,806 5%	55,460 7%	136,096 18%	752,996 100%
2008-09	109,294 17%	16,608 3%	203,051 31%	131,813 20%	40,505 6%	41,516 6%	108,564 17%	651,347 100%

ALL COMMODITY SHIPMENTS 2000-01 TO 2008-09



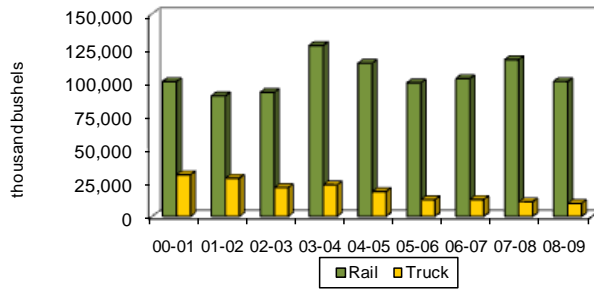
ALL COMMODITY SHIPMENTS 2000-01 TO 2008-09



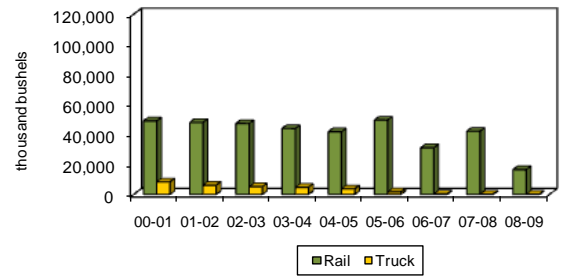
**NORTH DAKOTA GRAIN AND OILSEED SHIPMENTS
BY RAIL, TRUCK AND DESTINATION
thousand bu.**

YEAR	Minneapolis-St. Paul		Duluth-Superior		PNW		North Dakota		Other Minn. & Wisconsin		Midland & Gulf		Other		TOTAL	
	Rail	Truck	Rail	Truck	Rail	Truck	Rail	Truck	Rail	Truck	Rail	Truck	Rail	Truck	Rail	Truck
2000-01	99,799	30,796	48,947	8,332	69,382	1,547	21,243	72,520	21,332	10,538	56,196	4,062	81,804	16,537	398,681	144,340
	76%	24%	85%	15%	98%	2%	23%	77%	67%	33%	93%	7%	83%	17%	73%	27%
2001-02	89,147	28,262	48	6,128	79,219	1,513	20,034	65,992	20,922	12,427	38,287	3,351	76,005	21,501	371,521	139,160
	76%	24%	89%	11%	98%	2%	23%	77%	63%	37%	92%	8%	78%	22%	73%	27%
2002-03	91,788	21,262	47,227	5,157	69,511	1,759	25,627	66,367	26,846	14,669	39,847	3,758	74,901	26,079	375,747	139,062
	81%	19%	90%	10%	98%	2%	28%	72%	65%	35%	91%	9%	74%	26%	73%	27%
2003-04	126,476	23,355	43,914	4,779	114,919	1,661	20,144	77,679	45,619	13,713	44,630	2,982	65,708	25,983	461,407	150,131
	84%	16%	90%	10%	99%	1%	21%	79%	77%	23%	94%	6%	72%	28%	75%	25%
2004-05	113,330	18,290	41,719	3,715	102,656	533	19,249	63,556	26,942	9,889	43,159	3,103	75,454	16,852	422,509	115,908
	86%	14%	92%	8%	99%	1%	23%	77%	73%	27%	93%	7%	82%	18%	78%	22%
2005-06	98,867	12,330	49,541	1,720	141,600	1,028	18,193	69,656	35,404	7,422	45,655	3,190	84,350	21,005	473,610	116,340
	89%	11%	97%	3%	99%	1%	21%	79%	83%	17%	93%	7%	80%	20%	80%	20%
2006-07	102,016	12,469	31,098	410	218,163	990	21,321	67,274	29,424	8,637	44,628	2,198	80,880	21,580	527,530	113,561
	89%	11%	99%	1%	100%	0%	24%	76%	77%	23%	95%	5%	79%	21%	82%	18%
2007-08	116,071	10,815	42,079	259	239,692	1,555	35,693	80,471	27,531	7,274	51,986	3,474	102,255	33,841	615,309	137,687
	91%	9%	99%	1%	99%	1%	31%	69%	79%	21%	94%	6%	75%	25%	82%	18%
2008-09	99,795	9,499	16,507	101	201,634	1,417	46,529	85,284	24,281	16,224	36,870	4,646	82,221	26,343	507,837	143,510
	91%	9%	99%	1%	99%	1%	35%	65%	60%	40%	89%	11%	76%	24%	78%	22%

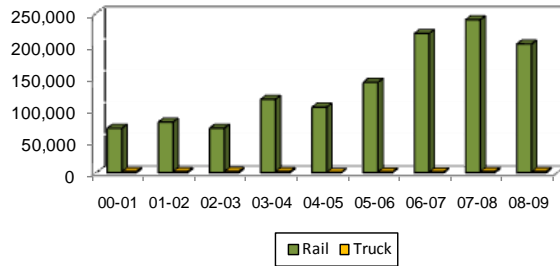
**All Shipments to Minneapolis-St. Paul
2000-01 to 2008-09**



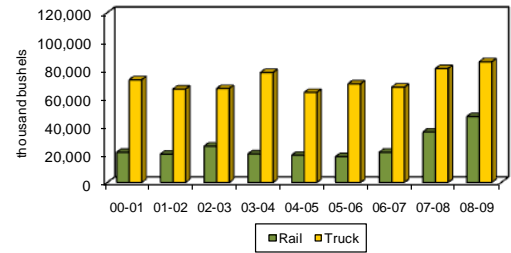
**All Shipments to Duluth-Superior
2000-01 to 2008-09**



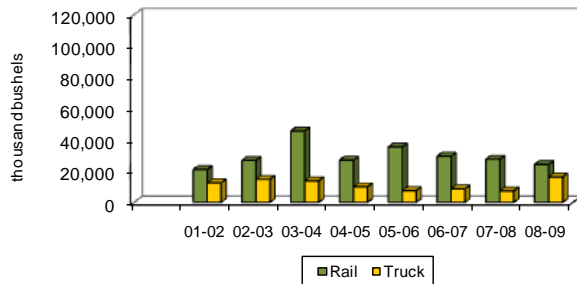
**All Shipments to PNW
2000-01 to 2008-09**



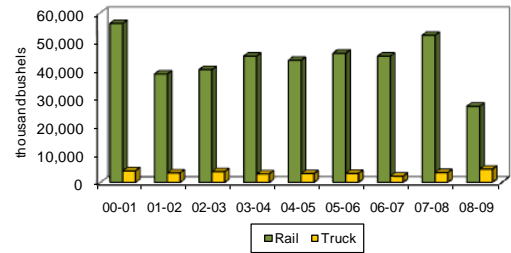
**All Shipments to North Dakota
2000-01 to 2008-09**



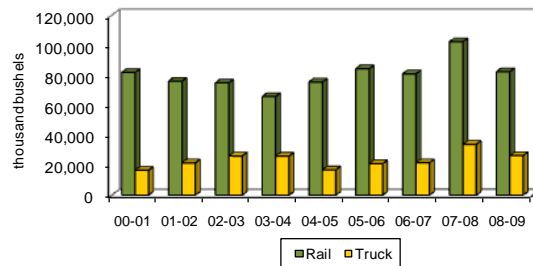
**All Shipments to Other Minnesota & Wisconsin
2000-01 to 2008-09**



**All Shipments to Midland & Gulf
2000-01 to 2008-09**



**All Shipments to Other Markets
2000-01 to 2008-09**

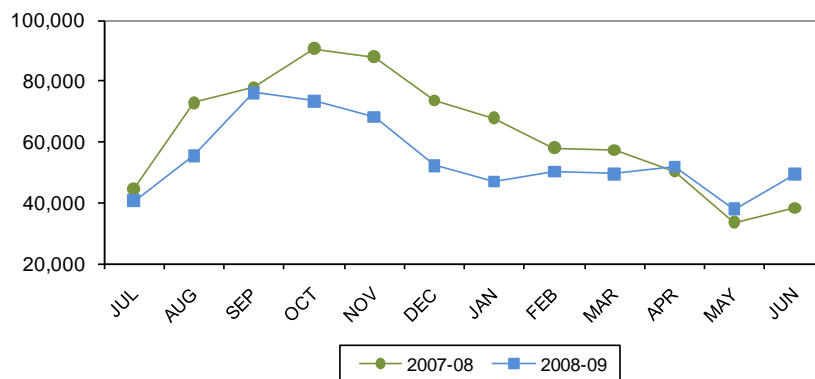


NORTH DAKOTA GRAIN AND OILSEED MOVEMENTS
BY MONTH
July 2008 – June 2009
thousand bu.

MONTH	HRS	Durum	Barley	SF	Corn	Soybeans	Canola	DEB	DEPeas	Other	TOTAL
July	5,986	240	4,101	2,476	17,508	5,933	733	1,034	1,290	1,210	40,511
August	22,591	1,555	6,797	1,642	13,949	2,584	1,897	999	2,439	1,020	55,473
September	39,607	3,238	8,606	890	11,458	4,308	4,146	1,164	1,131	1,533	76,080
October	18,940	1,991	5,594	3,563	7,812	29,497	1,471	2,461	720	1,358	73,407
November	11,880	2,233	4,914	4,861	24,014	16,588	870	1,355	483	1,016	68,213
December	12,173	1,902	3,499	1,795	22,726	6,247	978	1,504	366	1,039	52,228
January	12,203	877	4,207	1,553	15,424	9,690	1,088	1,181	235	564	47,021
February	14,928	2,039	3,953	1,141	14,987	9,601	1,017	1,294	516	701	50,177
March	13,817	2,216	4,632	1,383	15,407	7,620	1,631	1,203	631	876	49,415
April	14,594	2,547	3,953	2,009	17,878	7,077	904	1,317	592	945	51,816
May	13,374	1,346	2,928	1,332	12,293	3,148	867	1,311	480	704	37,782
June	12,642	1,729	4,045	2,175	16,445	7,916	1,430	1,149	793	900	49,224
TOTAL	192,735	21,911	57,230	24,820	189,900	110,207	17,031	15,972	9,675	11,866	651,347

ALL COMMODITY SHIPMENTS

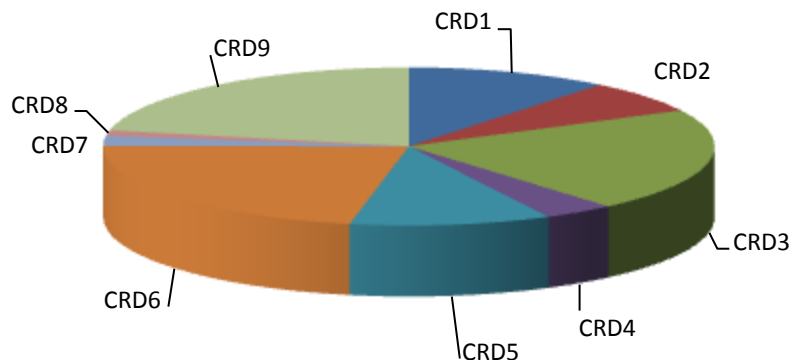
by month, 2007-08 and 2008-09
(thousand bushels)



**NORTH DAKOTA GRAIN AND OILSEED SHIPMENTS
BY CROP REPORTING DISTRICT ORIGIN
2000-01 to 2008-09
thousand bu.**

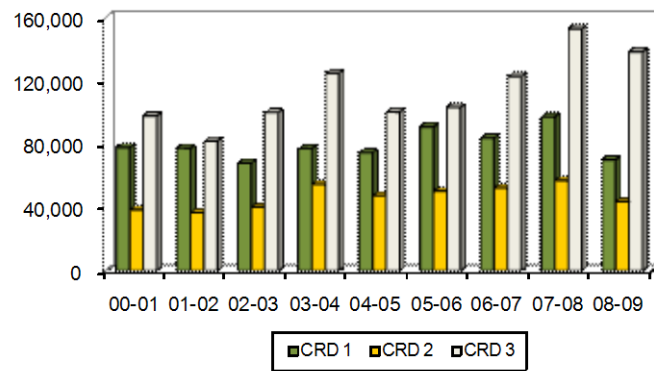
YEAR	Crop Reporting District									TOTAL
	1	2	3	4	5	6	7	8	9	
2000-01	77,929	38,650	97,863	21,862	53,679	102,971	37,524	17,997	94,546	543,021
	14%	7%	18%	4%	10%	19%	7%	3%	17%	100%
2001-02	77,429	36,796	82,051	18,929	51,124	97,291	36,885	16,224	93,952	510,681
	15%	7%	16%	4%	10%	19%	7%	3%	18%	100%
2002-03	68,110	40,328	100,077	17,184	51,038	118,535	24,166	10,844	84,527	514,809
	13%	8%	19%	3%	10%	23%	5%	2%	17%	100%
2003-04	77,302	54,678	124,721	20,427	60,553	138,672	33,339	15,518	86,330	611,539
	13%	9%	20%	3%	10%	23%	5%	3%	14%	100%
2004-05	74,688	47,939	100,271	22,667	59,276	81,537	35,569	14,535	102,480	538,417
	14%	9%	19%	4%	11%	15%	7%	3%	19%	100%
2005-06	90,938	50,422	103,262	25,128	63,413	96,251	37,210	13,714	109,613	589,950
	15%	9%	18%	4%	11%	16%	6%	2%	19%	100%
2006-07	83,850	52,303	122,788	23,245	62,213	142,516	30,629	7,075	116,472	641,091
	13%	8%	19%	4%	10%	22%	5%	1%	18%	100%
2007-08	97,146	57,111	152,795	32,770	82,518	146,174	42,477	14,767	127,237	752,996
	13%	8%	20%	4%	11%	19%	6%	2%	17%	100%
2008-09	70,038	43,797	138,409	24,486	69,176	142,770	13,649	7,443	141,580	651,347
	11%	5%	21%	4%	11%	22%	2%	1%	22%	100%

**N.D. GRAIN & OILSEED SHIPMENTS
by crop reporting district origin, 2008-09**

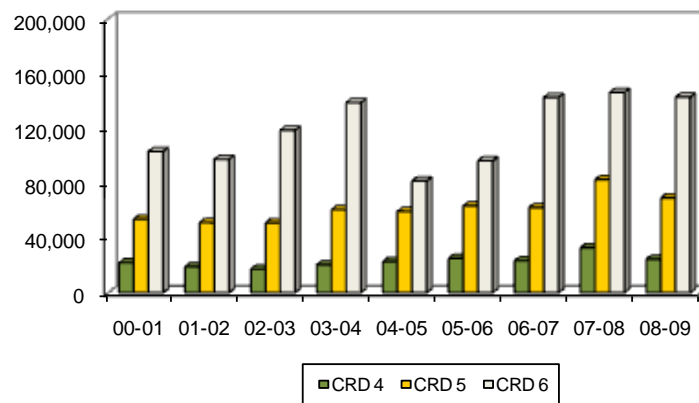


**ALL GRAIN AND OILSEED SHIPMENTS BY
CROP REPORTING DISTRICT
(thousand bushels)**

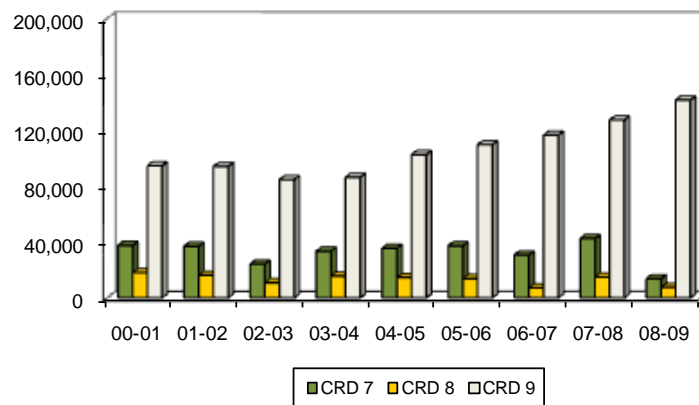
Northern Crop Reporting Districts



Central Crop Reporting Districts



Southern Crop Reporting Districts



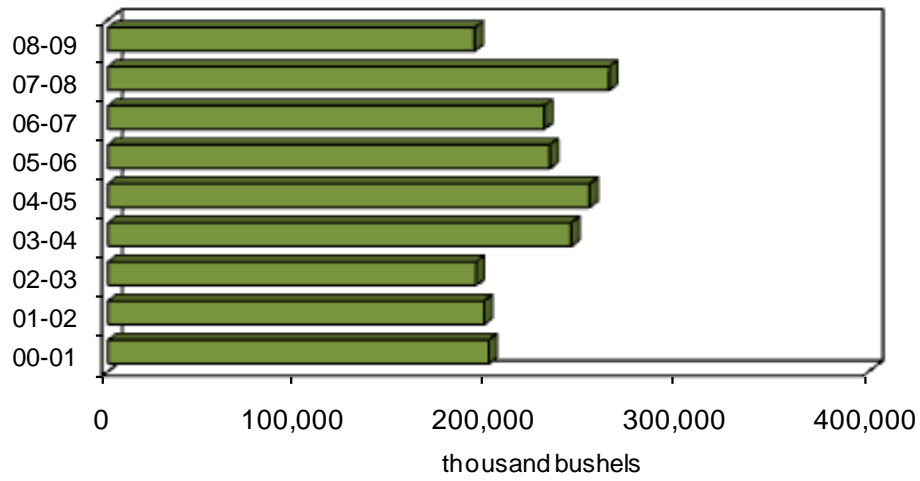
HARD RED SPRING WHEAT

**NORTH DAKOTA HARD RED SPRING WHEAT SHIPMENTS
BY DESTINATION
thousand bu.**

YEAR	Minneapolis- St. Paul	Duluth- Superior	PNW	North Dakota	Other Minn. & Wisconsin	Midland & Gulf	Other	TOTAL
2000-01	64,860	24,403	29,848	10,522	7,005	24,447	38,983	200,068
	32%	12%	15%	5%	4%	12%	19%	100%
2001-02	59,885	19,413	46,505	13,858	8,209	19,692	30,083	197,644
	30%	10%	24%	7%	4%	10%	15%	100%
2002-03	64,501	26,006	30,210	14,133	8,682	22,744	27,187	193,462
	33%	13%	16%	7%	4%	12%	14%	100%
2003-04	86,989	25,000	39,511	16,025	16,757	24,017	35,108	243,408
	36%	10%	16%	7%	7%	10%	14%	100%
2004-05	83,576	31,369	47,226	16,854	11,683	23,462	38,939	253,110
	33%	12%	19%	7%	5%	9%	15%	100%
2005-06	65,656	27,038	38,732	15,279	11,573	27,482	46,551	232,312
	28%	12%	17%	7%	5%	12%	20%	100%
2006-07	67,012	13,960	57,905	15,903	9,114	24,410	40,976	229,280
	29%	6%	25%	7%	4%	11%	18%	100%
2007-08	80,091	20,640	56,645	17,532	8,627	30,756	49,174	263,465
	30%	8%	21%	7%	3%	12%	19%	100%
2008-09	68,273	11,312	33,829	13,564	9,401	14,448	41,907	192,735
	35%	6%	18%	7%	5%	7%	22%	100%

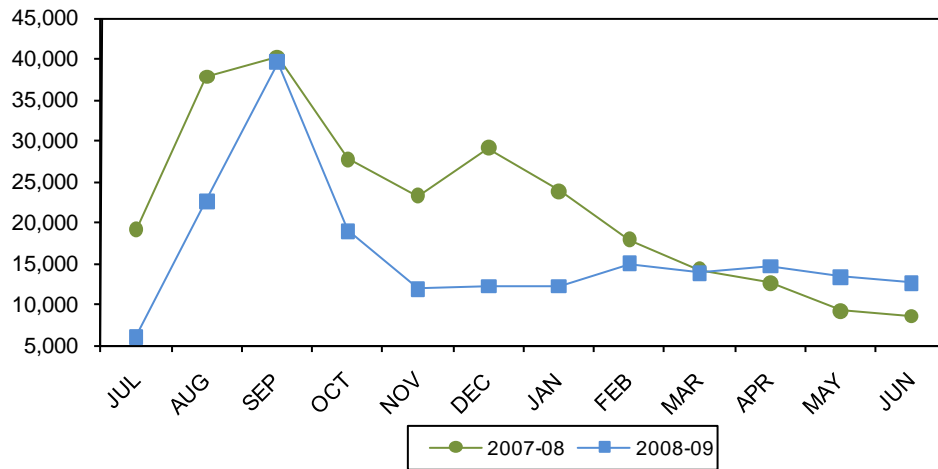
HRS WHEAT SHIPMENTS

2000-01 to 2008-09



HRS WHEAT SHIPMENTS

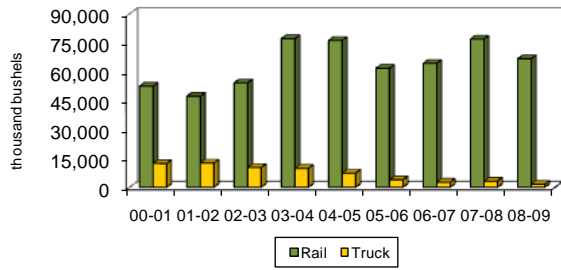
by month, 2007-08 to 2008-09
(thousand bushels)



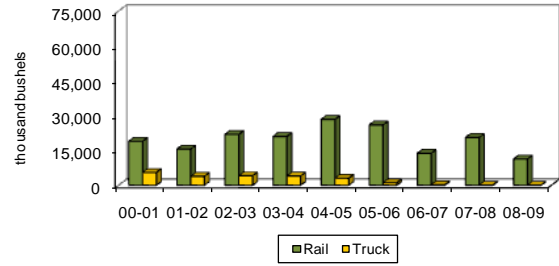
**NORTH DAKOTA HARD RED SPRING WHEAT SHIPMENTS
BY RAIL, TRUCK AND DESTINATION
thousand bu.**

YEAR	Minneapolis-St. Paul		Duluth-Superior		PNW		North Dakota		Other Minn. & Wisconsin		Midland & Gulf		Other		TOTAL	
	Rail	Truck	Rail	Truck	Rail	Truck	Rail	Truck	Rail	Truck	Rail	Truck	Rail	Truck	Rail	Truck
2000-01	52,472	12,388	18,929	5,474	29,210	638	1,710	8,812	4,926	2,079	23,928	518	37,703	1,281	168,878	31,190
	81%	19%	78%	22%	98%	2%	16%	84%	70%	30%	98%	2%	97%	3%	84%	16%
2001-02	47,284	12,601	15,561	3,852	45,728	777	1,878	11,980	4,807	3,402	19,018	674	28,599	1,483	162,875	34,769
	79%	21%	80%	20%	98%	2%	14%	86%	59%	41%	97%	3%	95%	5%	82%	18%
2002-03	54,187	10,314	21,927	4,079	29,517	693	3,267	10,866	5,049	3,632	22,130	614	25,908	1,280	161,984	31,478
	84%	16%	84%	16%	98%	2%	23%	77%	58%	42%	97%	3%	95%	5%	84%	16%
2003-04	77,139	9,850	21,022	3,948	39,100	411	2,912	13,113	13,682	3,075	22,671	1,346	30,918	4,190	207,446	35,962
	89%	11%	84%	16%	99%	1%	18%	82%	82%	18%	94%	6%	88%	12%	85%	15%
2004-05	76,224	7,353	28,350	3,018	47,062	165	4,743	12,111	10,316	1,368	21,999	1,463	36,255	2,684	224,949	28,161
	91%	9%	90%	10%	100%	0%	28%	72%	88%	12%	94%	6%	93%	7%	89%	11%
2005-06	61,727	3,929	25,973	1,065	38,302	431	3,719	11,560	10,547	1,026	26,042	1,440	42,434	4,117	208,744	23,568
	94%	6%	96%	4%	99%	1%	24%	76%	91%	9%	95%	5%	91%	9%	90%	10%
2006-07	64,328	2,684	13,768	191	57,588	317	2,772	13,132	8,166	948	24,000	410	39,287	1,689	209,909	19,372
	96%	4%	99%	1%	99%	1%	17%	83%	90%	10%	98%	2%	96%	4%	92%	8%
2007-08	76,888	3,203	20,549	91	56,386	258	4,398	13,134	7,900	727	29,612	1,144	48,196	978	243,929	19,535
	96%	4%	100%	0%	100%	0%	25%	75%	92%	8%	96%	4%	98%	2%	93%	7%
2008-09	66,713	1,561	11,259	53	33,667	162	3,056	10,509	8,545	856	13,629	819	41,434	473	178,302	14,433
	98%	2%	100%	0%	100%	0%	23%	77%	91%	9%	94%	6%	99%	1%	93%	7%

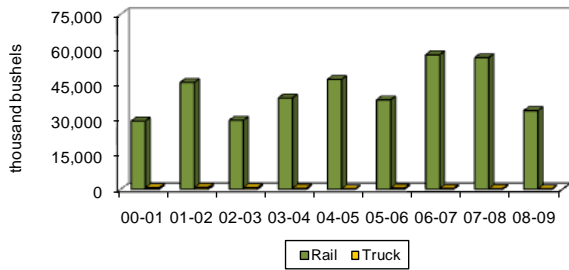
HRS Wheat to Minneapolis-St. Paul
2000-01 to 2008-09



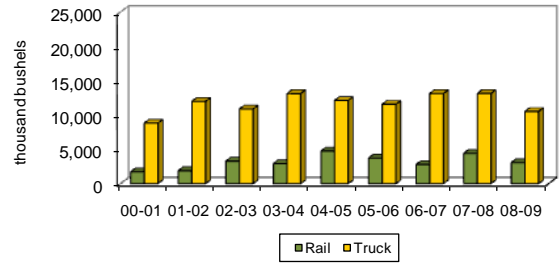
HRS Wheat to Duluth-Superior
2000-01 to 2008-09



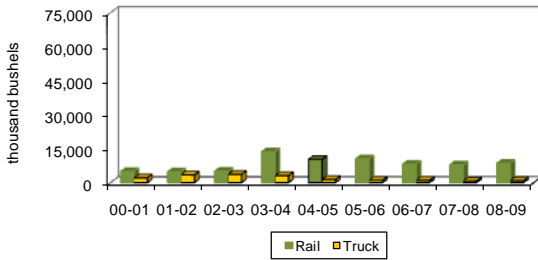
HRS Wheat to PNW
2000-01 to 2008-09



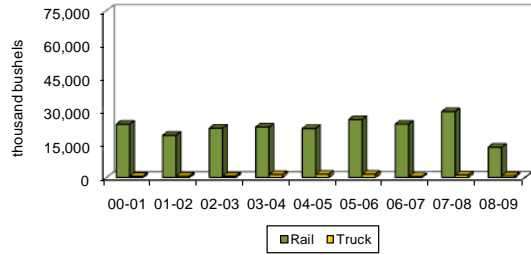
HRS Wheat to North Dakota
2000-01 to 2008-09



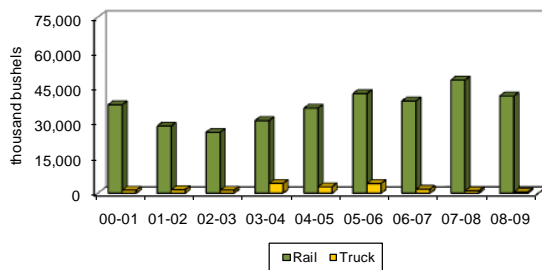
HRS Wheat to Other Minnesota & Wisconsin
2000-01 to 2008-09



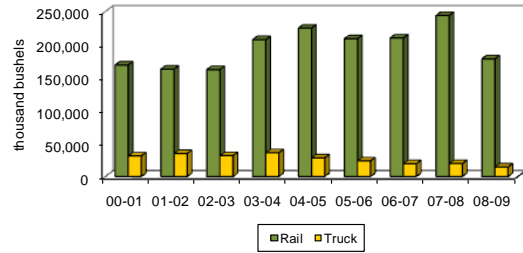
HRS Wheat to Midland & Gulf
2000-01 to 2008-09



HRS Wheat to Other Markets
2000-01 to 2008-09



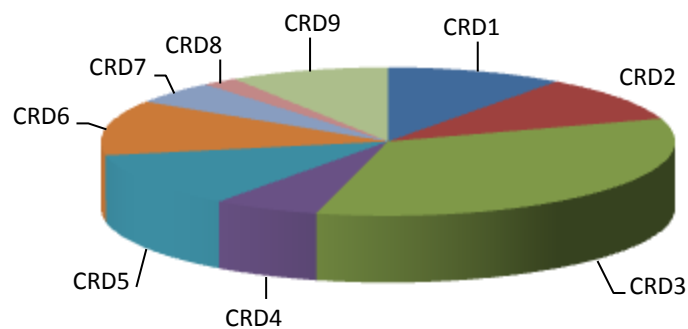
Total HRS Wheat Shipments
2000-01 to 2008-09



**NORTH DAKOTA HARD RED SPRING WHEAT SHIPMENTS
BY CROP REPORTING DISTRICT ORIGIN
thousand bu.**

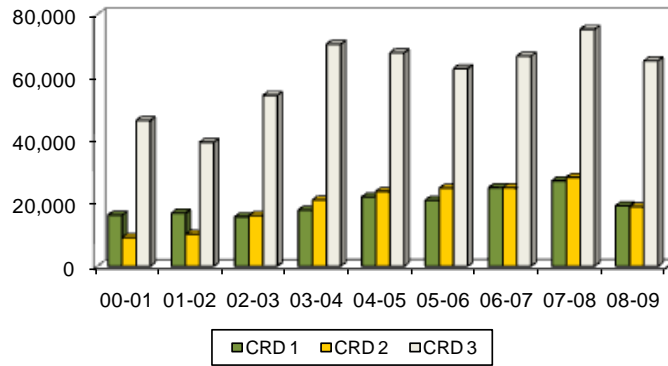
YEAR	Crop Reporting District									TOTAL
	1	2	3	4	5	6	7	8	9	
2000-01	16,171	9,090	46,282	6,301	22,214	33,091	27,822	12,822	26,276	200,068
	8%	5%	23%	3%	11%	17%	14%	6%	13%	100%
2001-02	16,831	10,186	39,364	6,716	23,571	35,475	27,684	11,689	26,128	197,644
	9%	5%	20%	3%	12%	18%	14%	6%	13%	100%
2002-03	15,740	16,063	54,305	7,501	20,395	32,793	17,940	8,530	20,196	193,462
	8%	8%	28%	4%	11%	17%	9%	4%	10%	100%
2003-04	17,820	20,998	70,521	9,017	24,206	38,292	24,874	12,047	25,632	243,408
	7%	9%	29%	4%	10%	16%	10%	5%	11%	100%
2004-05	21,945	23,765	67,782	11,786	30,261	28,650	27,393	12,522	29,007	253,110
	9%	9%	27%	5%	12%	11%	11%	5%	11%	100%
2005-06	20,892	24,767	62,748	13,511	24,392	25,117	27,312	11,666	21,907	232,312
	9%	11%	27%	6%	10%	11%	12%	5%	9%	100%
2006-07	24,971	24,889	66,731	12,321	24,161	28,960	22,790	5,737	18,719	229,280
	11%	11%	29%	5%	11%	13%	10%	3%	8%	100%
2007-08	27,135	28,203	75,259	18,021	28,867	26,023	32,956	10,983	16,018	263,465
	10%	11%	29%	7%	11%	10%	13%	4%	6%	100%
2008-09	19,164	18,905	65,227	12,186	22,552	22,884	9,734	4,423	17,659	192,735
	10%	10%	34%	6%	12%	12%	5%	2%	9%	100%

**HARD RED SPRING WHEAT SHIPMENTS
by crop reporting district origin, 2008-09**

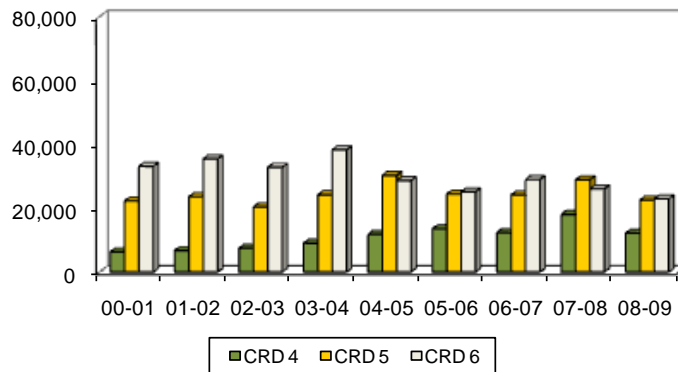


**HARD RED SPRING WHEAT SHIPMENTS
BY CROP REPORTING DISTRICT
(Thousand Bushels)**

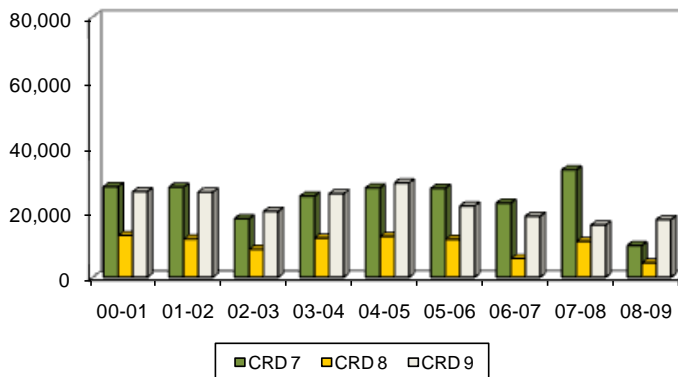
Northern Crop Reporting Districts



Central Crop Reporting Districts



Southern Crop Reporting Districts



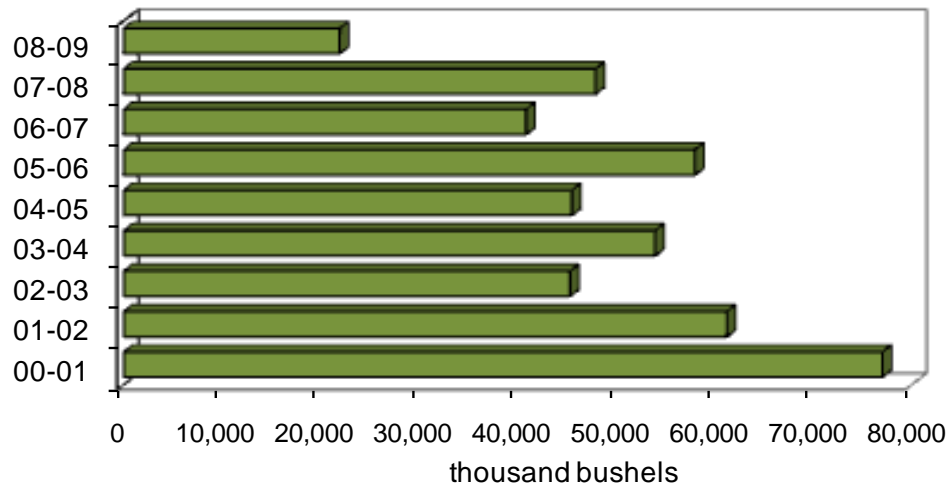
DURUM

**NORTH DAKOTA DURUM SHIPMENTS
BY DESTINATION
thousand bu.**

YEAR	Minneapolis- St. Paul	Duluth- Superior	PNW	North Dakota	Other Minn. & Wisconsin	Midland & Gulf	Other	TOTAL
2000-01	21,369	10,297	2,134	12,396	7,526	13,781	9,521	77,025
	28%	13%	3%	16%	10%	18%	12%	100%
2001-02	16,042	15,311	1,469	12,451	5,758	5,745	4,465	61,242
	26%	25%	2%	20%	9%	9%	7%	100%
2002-03	11,640	7,990	365	10,876	4,461	7,773	2,222	45,327
	26%	18%	1%	24%	10%	17%	5%	100%
2003-04	14,871	8,935	800	7,986	5,707	12,376	3,271	53,946
	28%	17%	1%	15%	11%	23%	6%	100%
2004-05	12,507	6,476	176	8,337	4,473	10,038	3,510	45,518
	27%	14%	0%	18%	10%	22%	8%	100%
2005-06	14,183	13,172	528	7,552	8,557	10,089	3,912	57,993
	24%	23%	1%	13%	15%	17%	7%	100%
2006-07	9,185	9,905	216	8,304	4,063	6,785	2,392	40,850
	22%	24%	1%	20%	10%	17%	6%	100%
2007-08	9,749	17,024	207	5,436	4,058	8,339	3,088	47,900
	20%	36%	0%	11%	8%	17%	6%	100%
2008-09	6,342	2,879	21	4,762	1,578	5,551	778	21,911
	29%	13%	0%	22%	7%	25%	4%	100%

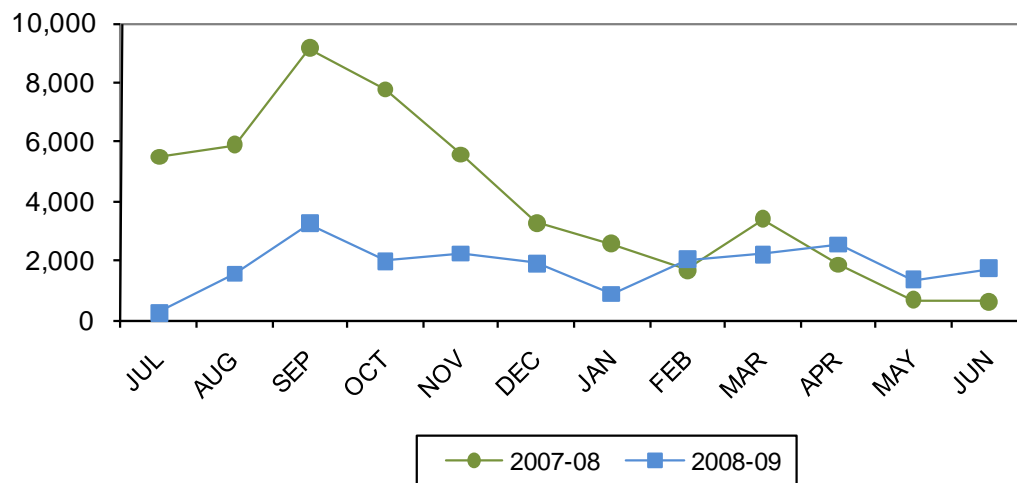
DURUM SHIPMENTS

2000-01 to 2008-09



DURUM SHIPMENTS

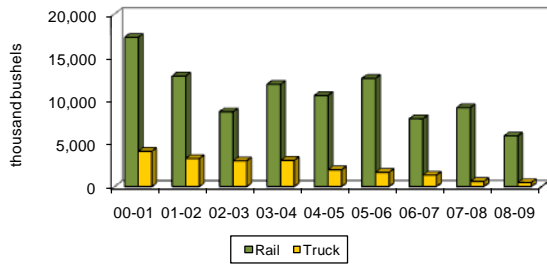
by month, 2007-08 to 2008-09
(thousand bushels)



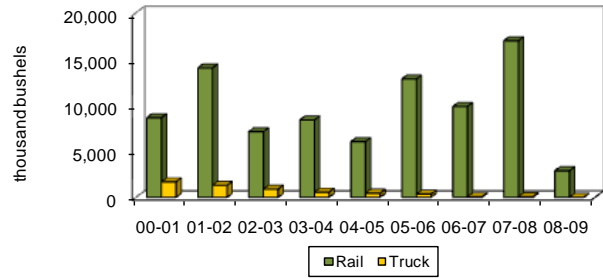
**NORTH DAKOTA DURUM SHIPMENTS
BY RAIL, TRUCK AND DESTINATION
thousand bu.**

YEAR	Minneapolis- St. Paul		Duluth- Superior		PNW		North Dakota		Other Minn. & Wisconsin		Midland & Gulf		Other		TOTAL	
	Rail	Truck	Rail	Truck	Rail	Truck	Rail	Truck	Rail	Truck	Rail	Truck	Rail	Truck	Rail	Truck
2000-01	17,288	4,081	8,620	1,677	2,124	10	6,269	6,127	6,734	792	13,678	103	8,318	1,204	63,031	13,994
	81%	19%	84%	16%	100%	0%	51%	49%	89%	11%	99%	1%	87%	13%	82%	18%
2001-02	12,803	3,239	14,013	1,299	1,468	1	7,763	4,688	5,329	429	5,689	56	4,164	301	51,229	10,013
	80%	20%	92%	8%	100%	0%	62%	38%	93%	7%	99%	1%	93%	7%	84%	16%
2002-03	8,661	2,979	7,111	879	365	0	7,951	2,924	3,714	747	7,719	54	2,001	222	37,522	7,805
	74%	26%	89%	11%	100%	0%	73%	27%	83%	17%	99%	1%	90%	10%	83%	17%
2003-04	11,838	3,033	8,376	559	763	37	3,724	4,262	4,972	735	12,262	114	3,011	260	44,947	8,999
	80%	20%	94%	6%	95%	5%	47%	53%	87%	13%	99%	1%	92%	8%	83%	17%
2004-05	10,558	1,949	6,033	444	176	0	4,469	3,868	3,836	636	9,989	49	3,437	73	38,498	7,020
	84%	16%	93%	7%	100%	0%	54%	46%	86%	14%	100%	0%	98%	2%	85%	15%
2005-06	12,532	1,651	12,819	353	508	20	2,643	4,909	8,314	243	9,870	219	3,450	463	50,136	7,857
	88%	12%	97%	3%	96%	4%	35%	65%	97%	3%	98%	2%	88%	12%	86%	14%
2006-07	7,856	1,329	9,851	53	200	16	3,787	4,517	3,909	155	6,591	194	2,244	148	34,438	6,412
	86%	14%	99%	1%	93%	7%	46%	54%	96%	4%	97%	3%	94%	6%	84%	16%
2007-08	9,145	603	16,962	62	201	5	2,873	2,563	4,034	24	8,146	193	3,025	63	44,387	3,513
	94%	6%	100%	0%	97%	3%	53%	47%	99%	1%	98%	2%	98%	2%	93%	7%
2008-09	5,871	471	2,878	1	21	0	2,453	2,309	1,411	167	5,358	193	768	10	18,760	3,151
	93%	7%	100%	0%	100%	0%	52%	48%	89%	11%	97%	3%	99%	1%	86%	14%

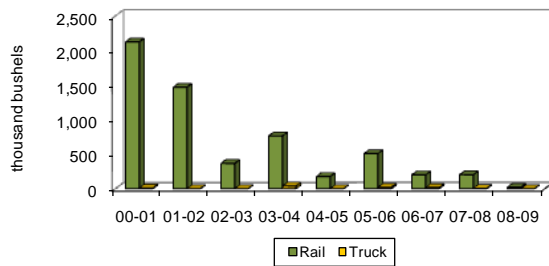
Durum to Minneapolis-St. Paul
1999-2000 to 2007-08



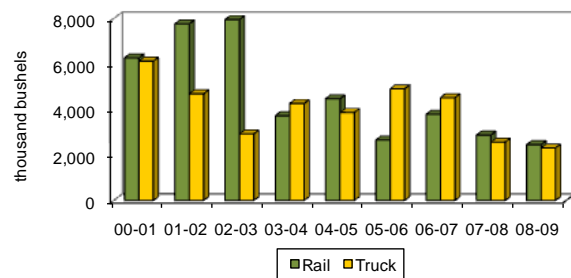
Durum to Duluth-Superior
1999-2000 to 2007-08



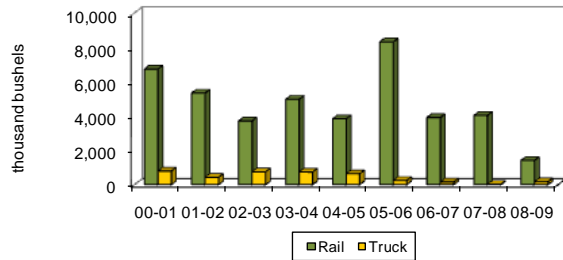
Durum to PNW
1999-2000 to 2007-08



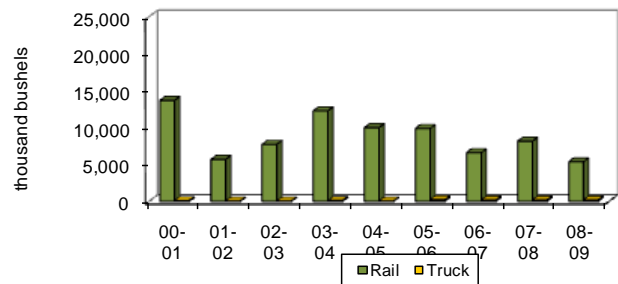
Durum to North Dakota
1999-2000 to 2007-08



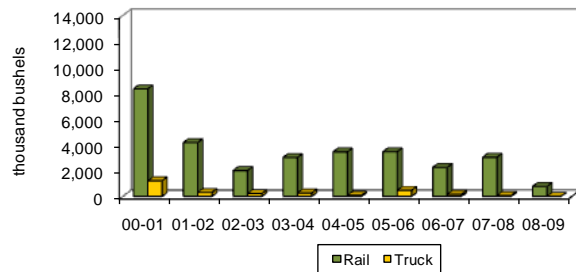
Durum to Other Minnesota & Wisconsin
1999-2000 to 2007-08



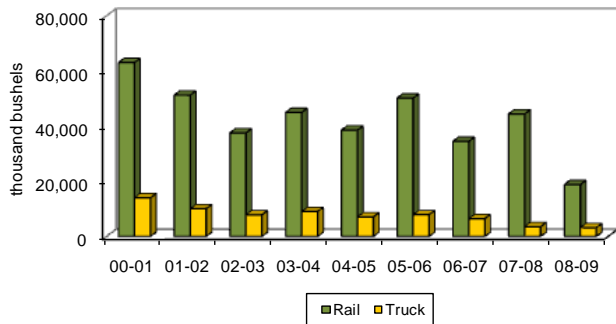
Durum to Midland & Gulf
1999-2000 to 2007-08



Durum to Other Markets
1999-2000 to 2007-08



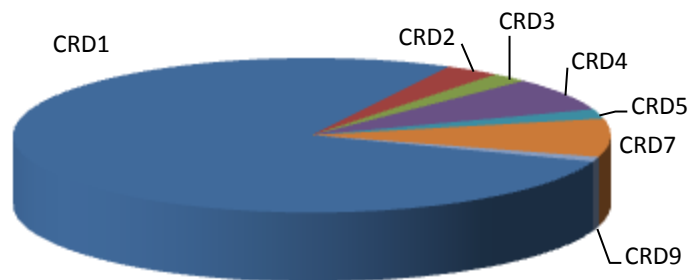
Total Durum Shipments
1999-2000 to 2007-08



**NORTH DAKOTA DURUM SHIPMENTS
BY CROP REPORTING DISTRICT ORIGIN
thousand bu.**

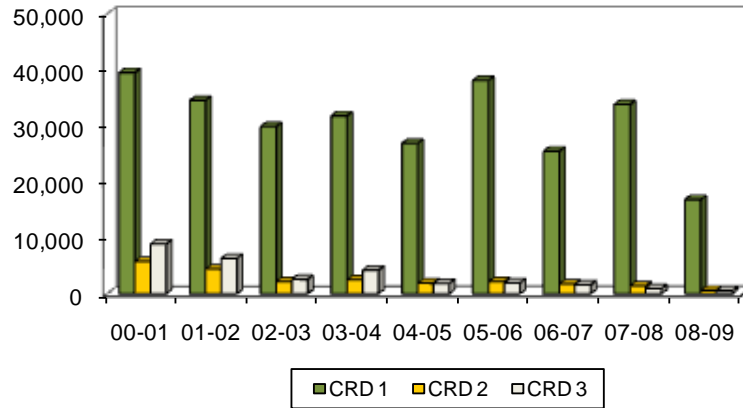
YEAR	Crop Reporting District									TOTAL
	1	2	3	4	5	6	7	8	9	
2000-01	39,479	5,751	8,864	8,838	3,393	1,899	7,601	514	687	77,025
	51%	7%	12%	11%	4%	2%	10%	1%	1%	100%
2001-02	34,510	4,393	6,252	5,096	2,600	752	6,910	349	380	61,242
	56%	7%	10%	8%	4%	1%	11%	1%	1%	100%
2002-03	29,854	2,146	2,535	3,752	1,444	160	5,216	110	110	45,327
	66%	5%	6%	8%	3%	0%	12%	0%	0%	100%
2003-04	31,759	2,478	4,187	5,305	2,390	272	7,099	185	271	53,946
	59%	5%	8%	10%	4%	1%	13%	0%	1%	100%
2004-05	26,849	1,864	1,818	5,088	1,388	453	7,544	199	314	45,518
	59%	4%	4%	11%	3%	1%	17%	0%	1%	100%
2005-06	38,091	2,120	1,877	5,776	1,635	144	8,128	132	89	57,993
	66%	4%	3%	10%	3%	0%	14%	0%	0%	100%
2006-08	25,451	1,729	1,556	4,119	1,156	31	6,445	68	293	40,850
	62%	4%	4%	10%	3%	0%	16%	0%	1%	100%
2007-08	33,798	1,404	887	3,450	1,215	138	6,567	85	356	47,900
	71%	3%	2%	7%	3%	0%	14%	0%	1%	100%
2008-09	16,797	584	508	1,620	440	0	1,781	56	124	21,911
	77%	3%	2%	7%	2%	0%	8%	0%	1%	100%

**DURUM SHIPMENTS
by crop reporting district origin, 2008-09**

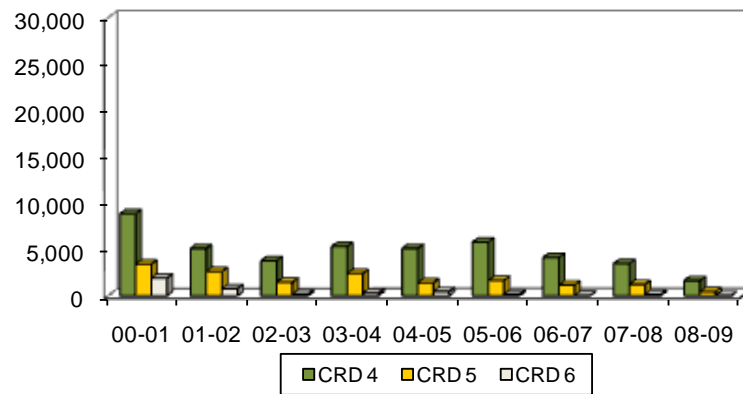


**DURUM SHIPMENTS
BY CROP REPORTING DISTRICT
(Thousand Bushels)**

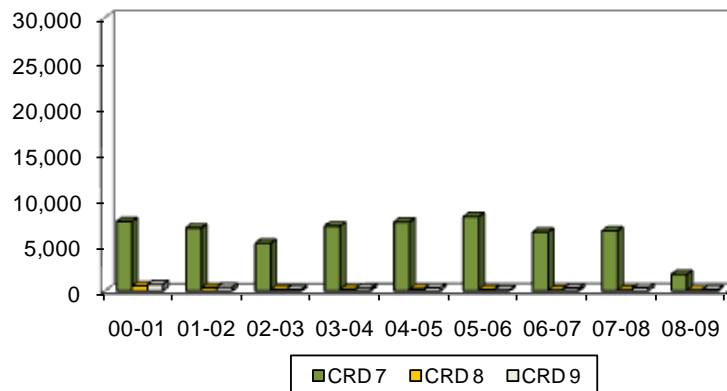
Northern Crop Reporting Districts



Central Crop Reporting Districts



Southern Crop Reporting Districts



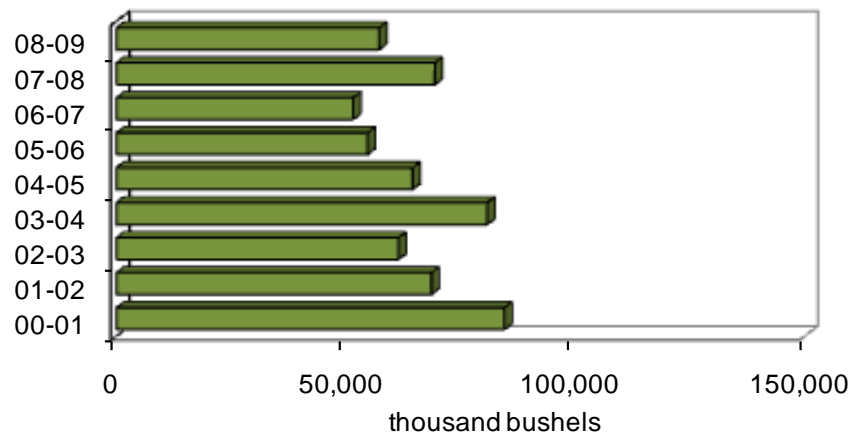
BARLEY

**NORTH DAKOTA BARLEY SHIPMENTS
BY DESTINATION
thousand bu.**

YEAR	Minneapolis- St. Paul	Duluth- Superior	PNW	North Dakota	Other Minn. & Wisconsin	Midland & Gulf	Other	TOTAL
2000-01	29,486	4,361	7,266	17,222	5,871	8,278	12,047	84,531
	35%	5%	9%	20%	7%	10%	14%	100%
2001-02	26,576	3,435	5,151	9,985	5,668	6,757	11,083	68,655
	39%	5%	8%	15%	8%	10%	16%	100%
2002-03	21,672	1,325	1,030	12,626	12,309	4,612	7,910	61,485
	35%	2%	2%	21%	20%	8%	13%	100%
2003-04	27,119	3,773	3,029	16,305	17,427	4,657	8,458	80,768
	34%	5%	4%	20%	22%	6%	10%	100%
2004-05*	20,639	1,024	3,674	16,234	9,611	5,432	7,957	64,569
	32%	2%	6%	25%	15%	8%	12%	100%
2005-06	14,787	1,504	4,114	12,561	10,723	4,051	7,004	54,745
	27%	3%	8%	23%	20%	7%	13%	100%
2006-07	18,160	2,940	2,215	8,177	10,821	4,673	4,591	51,577
	35%	6%	4%	16%	21%	9%	9%	100%
2007-08	18,190	3,164	6,606	17,561	11,231	3,227	9,423	69,403
	26%	5%	10%	25%	16%	5%	14%	100%
2008-09	13,848	1,891	1,681	20,892	9,007	2,974	6,937	57,230
	24%	3%	3%	37%	16%	5%	12%	100%

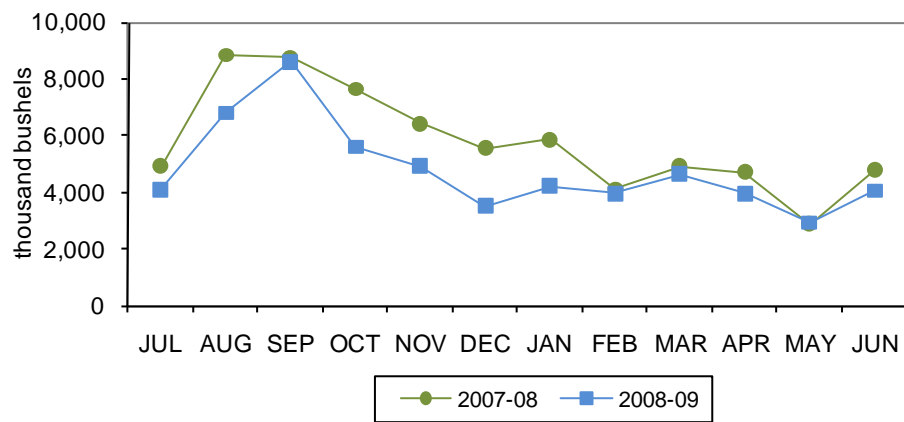
BARLEY SHIPMENTS

2000-01 to 2008-09



BARLEY SHIPMENTS

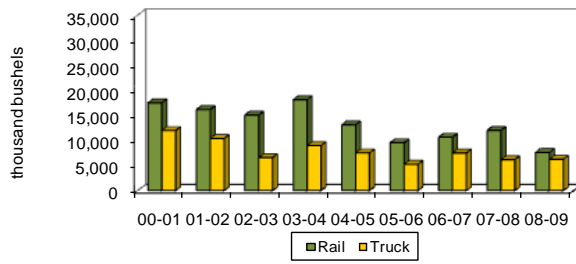
by month, 2007-08 to 2008-09



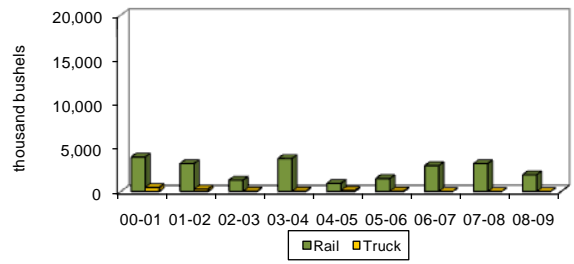
**NORTH DAKOTA BARLEY SHIPMENTS
BY RAIL, TRUCK AND DESTINATION
thousand bu.**

YEAR	Minneapolis- St. Paul		Duluth- Superior		PNW		North Dakota		Other Minn. & Wisconsin		Midland & Gulf		Other		TOTAL	
	Rail	Truck	Rail	Truck	Rail	Truck	Rail	Truck	Rail	Truck	Rail	Truck	Rail	Truck	Rail	Truck
2000-01	17,512	11,974	3,910	451	7,203	63	3,883	13,340	3,951	1,921	7,842	436	11,113	934	55,413	29,118
	89%	41%	90%	10%	99%	1%	23%	77%	67%	33%	95%	5%	92%	8%	66%	34%
2001-02	16,174	10,402	3,170	265	5,078	74	1,200	8,785	3,924	1,744	6,395	362	10,027	1,056	45,967	22,688
	61%	39%	92%	8%	99%	1%	12%	88%	69%	31%	95%	5%	90%	10%	67%	33%
2002-03	15,080	6,592	1,293	33	1,004	26	3,561	9,065	10,003	2,306	4,380	232	6,817	1,094	42,137	19,348
	70%	30%	98%	2%	97%	3%	28%	72%	81%	19%	95%	5%	86%	14%	69%	31%
2003-04	18,145	8,974	3,739	35	2,911	118	4,066	12,238	16,454	973	4,431	226	6,008	2,450	55,753	25,014
	67%	33%	99%	1%	96%	4%	25%	75%	94%	6%	95%	5%	71%	29%	69%	31%
2004-05	13,119	7,520	918	106	3,674	0	3,009	13,224	8,757	853	4,911	521	6,794	1,163	41,182	23,387
	64%	36%	90%	10%	100%	0%	19%	81%	91%	9%	90%	10%	85%	15%	64%	36%
2005-06	9,546	5,241	1,465	39	4,091	24	2,338	10,223	9,958	765	3,669	382	6,074	930	37,141	17,604
	65%	35%	97%	3%	99%	1%	19%	81%	93%	7%	91%	9%	87%	13%	68%	32%
2006-07	10,661	7,499	2,930	10	2,215	0	1,464	6,713	10,414	406	4,134	539	4,299	292	36,118	15,458
	59%	41%	100%	0%	100%	0%	18%	82%	96%	4%	88%	12%	94%	6%	70%	30%
2007-08	12,009	6,181	3,164	0	6,499	108	5,516	12,045	10,242	989	2,080	1,147	8,877	546	48,386	21,016
	66%	34%	100%	0%	98%	2%	31%	69%	91%	9%	64%	36%	94%	6%	70%	30%
2008-09	7,606	6,242	1,891	0	1,665	16	9,959	10,933	8,085	922	1,671	1,303	6,343	593	37,220	20,010
	55%	45%	100%	0%	99%	1%	48%	52%	90%	10%	56%	44%	91%	9%	65%	35%

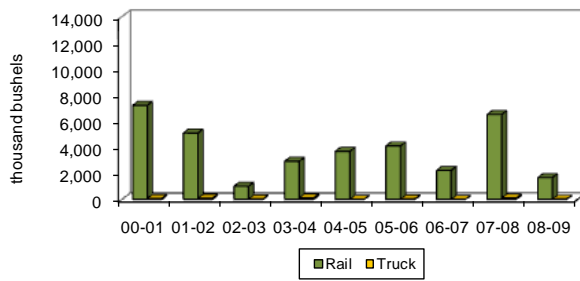
Barley to Minneapolis-St. Paul
2000-01 to 2008-09



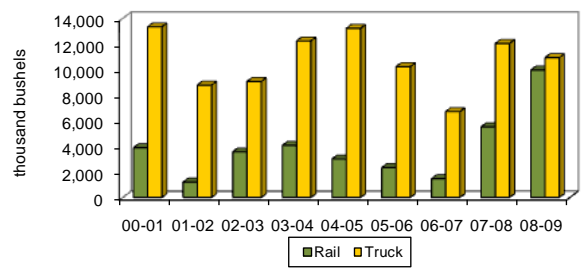
Barley to Duluth-Superior
2000-01 to 2008-09



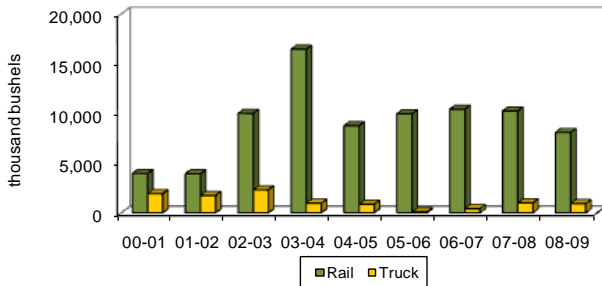
Barley to PNW
2000-01 to 2008-09



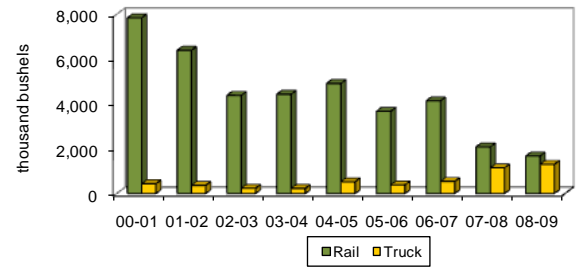
Barley to North Dakota
2000-01 to 2008-09



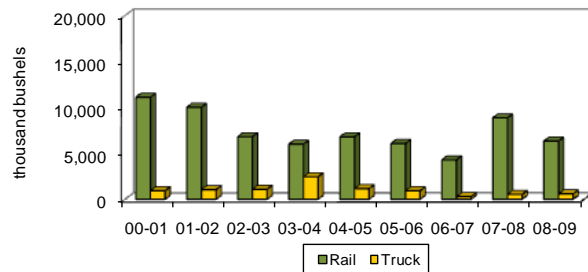
Barley to Other Minnesota & Wisconsin
2000-01 to 2008-09



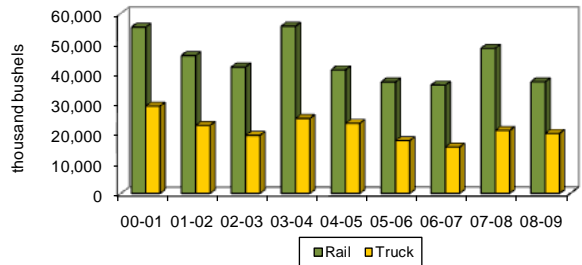
Barley to Midland & Gulf
2000-01 to 2008-09



Barley to Other Markets
2000-01 to 2008-09



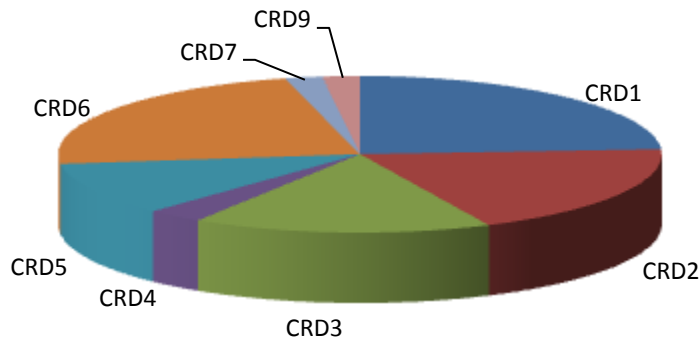
Total Barley Shipments
2000-01 to 2008-09



**NORTH DAKOTA BARLEY SHIPMENTS
BY CROP REPORTING DISTRICT ORIGIN
thousand bu.**

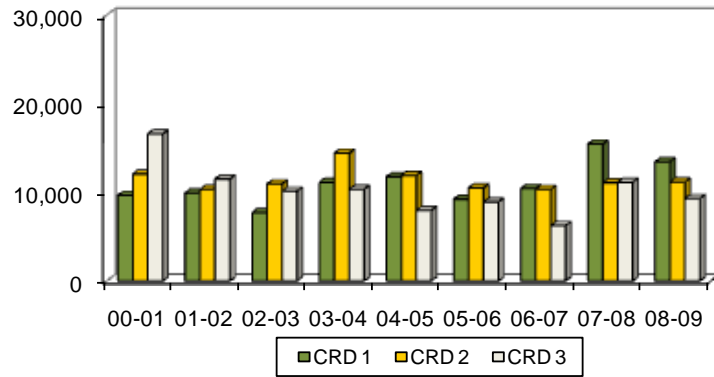
YEAR	Crop Reporting District									TOTAL
	1	2	3	4	5	6	7	8	9	
2000-01	9,657	12,064	16,593	3,246	11,351	22,212	521	1,528	7,359	84,531
	11%	14%	20%	4%	13%	26%	1%	2%	9%	100%
2001-02	9,923	10,333	11,493	2,438	8,361	17,321	641	117	6,968	68,655
	14%	15%	17%	4%	12%	25%	1%	2%	10%	100%
2002-03	7,712	10,943	10,120	1,210	6,360	20,612	139	147	4,241	61,485
	13%	18%	16%	2%	10%	34%	0%	0%	7%	100%
2003-04	11,126	14,405	10,344	1,804	7,266	29,368	479	969	5,007	80,768
	14%	18%	13%	2%	9%	36%	1%	1%	6%	100%
2004-05	11,758	11,901	7,974	124	8,915	16,770	21	684	5,223	64,569
	18%	18%	12%	0%	14%	26%	0%	1%	8%	100%
2005-06	9,225	10,494	8,909	1,088	7,897	11,529	192	424	4,986	54,745
	17%	19%	16%	2%	14%	21%	0%	1%	9%	100%
2006-07	10,419	10,321	6,248	787	4,644	15,693	116	343	3,006	51,577
	20%	20%	12%	2%	9%	30%	0%	1%	6%	100%
2007-08	15,443	11,080	11,124	2,053	7,142	15,038	1,248	1,001	5,273	69,403
	22%	16%	16%	3%	10%	22%	2%	1%	8%	100%
2008-09	13,452	11,158	9,295	1,510	6,028	13,285	954	281	1,268	57,230
	24%	19%	16%	3%	11%	23%	2%	0%	2%	100%

**BARLEY SHIPMENTS
by crop reporting district origin, 2008-09**

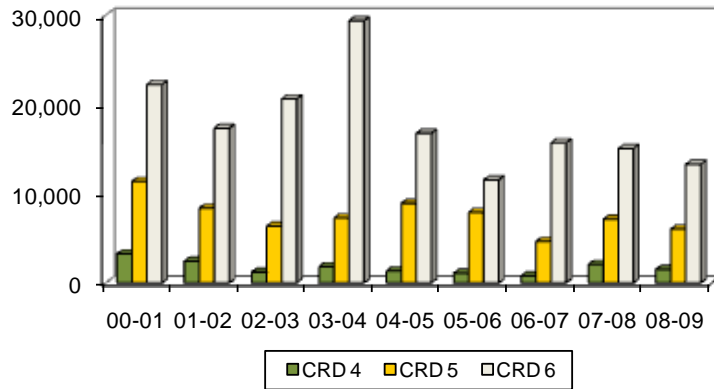


**BARLEY SHIPMENTS
BY CROP REPORTING DISTRICT
(Thousand Bushels)**

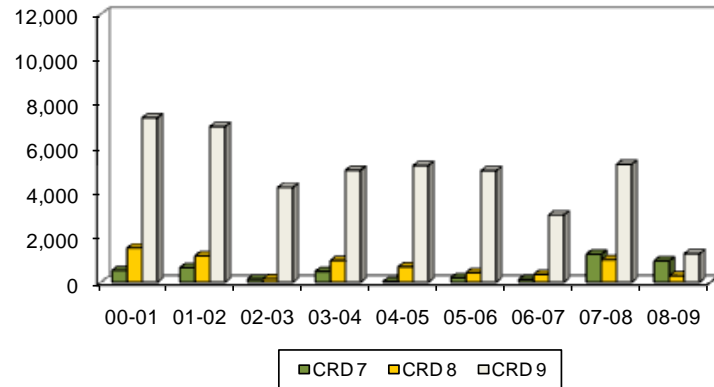
Northern Crop Reporting Districts



Central Crop Reporting Districts



Southern Crop Reporting Districts

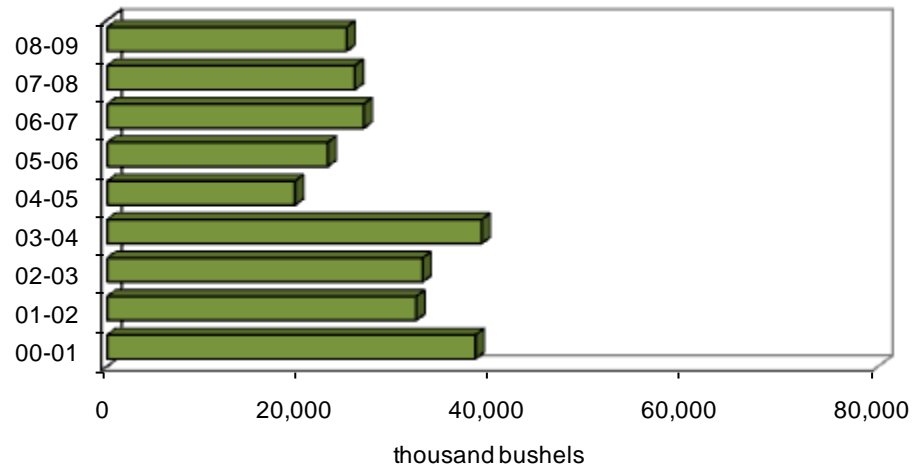


SUNFLOWER

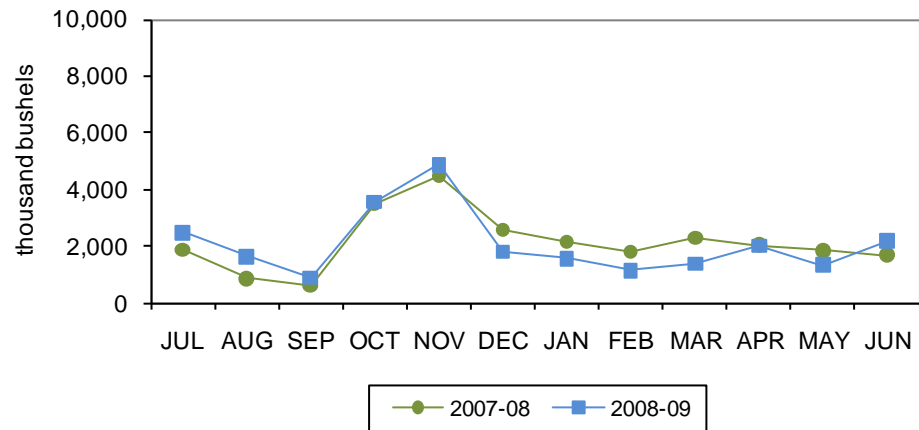
**NORTH DAKOTA SUNFLOWER SHIPMENTS
BY DESTINATION
thousand bu.**

YEAR	Minneapolis- St. Paul	Duluth- Superior	PNW	North Dakota	Other Minn. & Wisconsin	Midland & Gulf	Other	TOTAL
2000-01	2,287	15	462	26,868	3,657	932	3,968	38,194
	6%	0%	1%	70%	10%	2%	10%	100%
2001-02	1,748	720	371	20,935	3,885	487	3,910	32,042
	5%	2%	1%	65%	12%	2%	12%	100%
2002-03	1,248	11	401	19,207	4,676	1,120	6,034	32,708
	4%	0%	1%	59%	14%	3%	18%	100%
2003-04	3,496	32	357	21,489	6,404	996	6,078	38,830
	9%	0%	1%	55%	16%	3%	16%	100%
2004-05	786	12	170	9,817	4,680	412	3,624	19,470
	4%	0%	1%	50%	24%	2%	19%	100%
2005-06	1,264	0	221	15,312	3,312	293	2,461	22,850
	6%	0%	1%	67%	14%	1%	11%	100%
2006-07	795	0	134	1,696	3,859	291	4,514	26,590
	3%	0%	1%	64%	15%	1%	17%	100%
2007-08	194	4	191	18,462	3,125	313	3,380	25,668
	1%	0%	1%	72%	12%	1%	13%	100%
2008-09	358	4	220	17,614	2,729	224	3,671	24,820
	1%	0%	1%	71%	11%	1%	15%	100%

SUNFLOWER SHIPMENTS 2000-01 to 2008-09



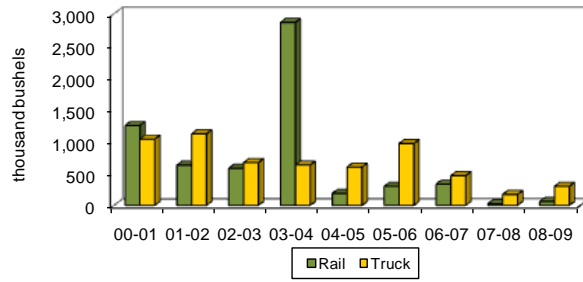
SUNFLOWER SHIPMENTS by month, 2007-08 to 2008-09



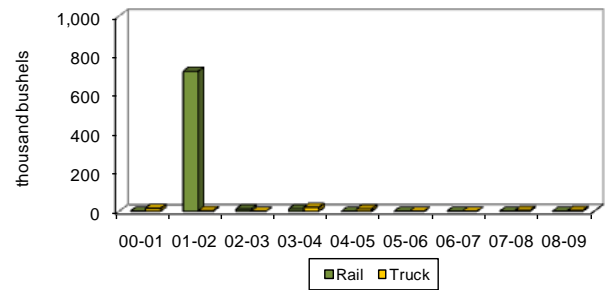
**NORTH DAKOTA SUNFLOWER SHIPMENTS
BY RAIL, TRUCK AND DESTINATION
thousand bu.**

YEAR	Minneapolis- St. Paul		Duluth- Superior		PNW		North Dakota		Other Minn. & Wisconsin		Midland & Gulf		Other		TOTAL	
	Rail	Truck	Rail	Truck	Rail	Truck	Rail	Truck	Rail	Truck	Rail	Truck	Rail	Truck	Rail	Truck
2000-01	1,250	1,037	0	15	47	415	2,828	24,040	117	3,540	4	928	643	3,325	4,887	33,307
	55%	45%	0%	100%	10%	90%	11%	89%	3%	97%	0%	100%	16%	84%	13%	87%
2001-02	628	1,120	717	3	4	367	2,349	18,586	185	3,700	30	457	662	3,248	4,574	27,468
	36%	64%	100%	0%	1%	99%	11%	89%	5%	95%	6%	94%	17%	83%	14%	86%
2002-03	579	669	11	0	45	356	2,155	17,052	285	4,391	176	944	1,889	4,145	5,140	27,568
	46%	54%	100%	0%	11%	89%	11%	89%	6%	94%	16%	84%	31%	69%	16%	84%
2003-04	2,864	632	12	20	20	337	2,005	19,484	1,079	5,325	353	643	1,665	4,413	7,996	30,834
	82%	18%	38%	63%	6%	94%	9%	91%	17%	83%	35%	65%	27%	73%	21%	79%
2004-05	187	599	0	12	7	163	277	9,540	341	4,339	0	412	409	3,215	1,222	18,248
	24%	76%	0%	100%	4%	96%	3%	97%	7%	93%	0%	100%	11%	89%	6%	94%
2005-06	297	967	0	0	0	221	592	14,720	695	2,617	45	248	1,035	1,426	2,663	20,187
	23%	77%	0%	0%	0%	100%	4%	96%	21%	79%	15%	85%	42%	58%	12%	88%
2006-07	331	464	0	0	0	134	1,204	15,792	24	3,835	59	232	2,259	2,255	3,876	22,714
	42%	58%	0%	0%	0%	100%	7%	93%	1%	99%	20%	80%	50%	50%	15%	85%
2007-08	24	170	0	4	107	84	2,037	16,425	303	2,822	19	294	913	2,467	3,404	22,264
	12%	88%	0%	100%	56%	44%	11%	89%	10%	90%	6%	94%	27%	73%	13%	87%
2008-09	60	298	0	4	179	41	2,670	14,944	443	2,286	62	162	1,010	2,661	4,423	20,397
	17%	83%	0%	100%	81%	19%	15%	85%	16%	84%	28%	72%	28%	72%	18%	82%

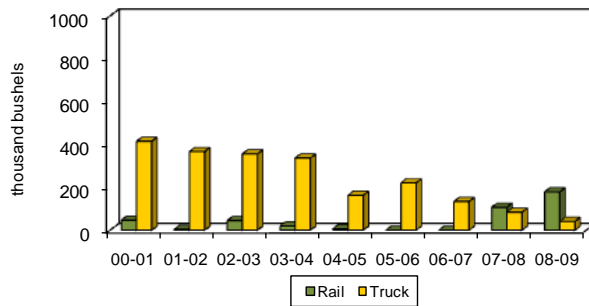
Sunflower to Minneapolis-St. Paul
2000-01 to 2008-09



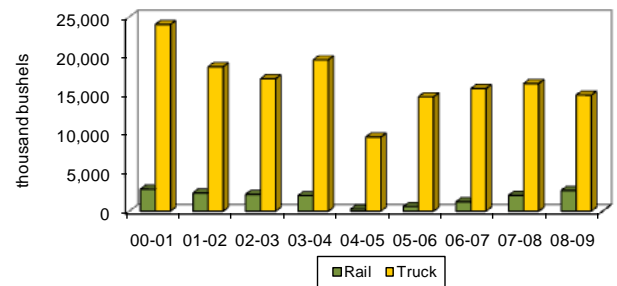
Sunflower to Duluth-Superior
2000-01 to 2008-09



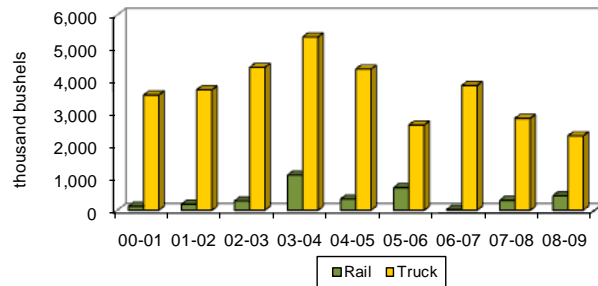
Sunflower to PNW
2000-01 to 2008-09



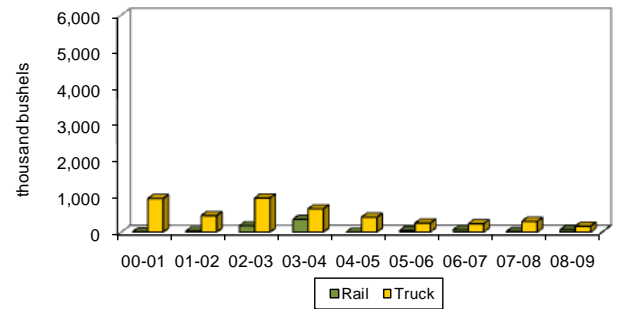
Sunflower to North Dakota
2000-01 to 2008-09



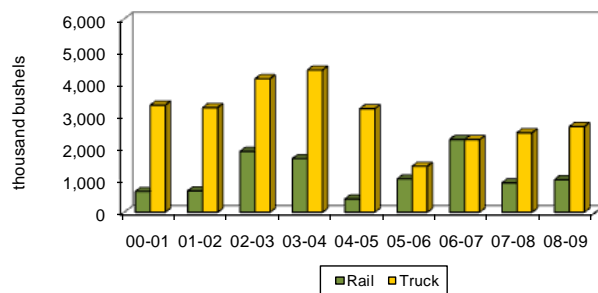
Sunflower to Other Minnesota & Wisconsin
2000-01 to 2008-09



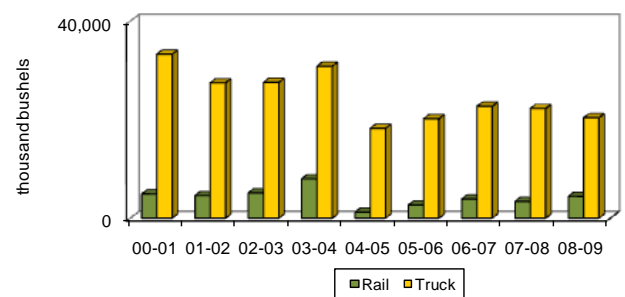
Sunflower to Midland & Gulf
2000-01 to 2008-09



Sunflower to Other Markets
2000-01 to 2008-09



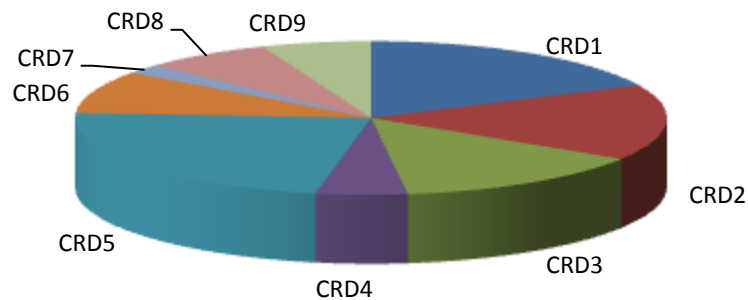
Total Sunflower Shipments
2000-01 to 2008-09



**NORTH DAKOTA SUNFLOWER SHIPMENTS
BY CROP REPORTING DISTRICT ORIGIN
thousand bu.**

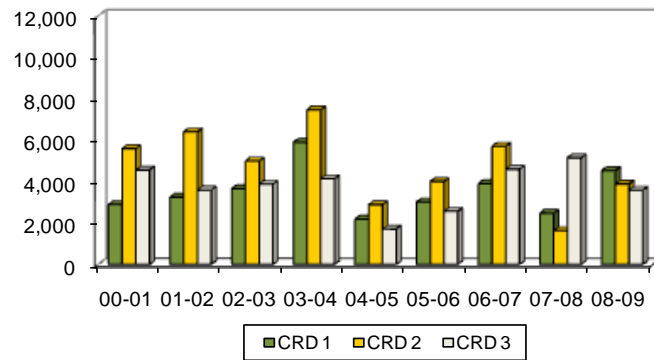
YEAR	Crop Reporting District									TOTAL
	1	2	3	4	5	6	7	8	9	
2000-01	2,589	5,595	4,556	701	9,693	5,170	427	2,624	6,539	38,194
	8%	15%	12%	2%	25%	14%	1%	7%	17%	100%
2001-02	3,250	6,399	3,591	1,140	7,453	3,925	429	2,033	3,822	32,042
	10%	20%	11%	4%	23%	12%	1%	6%	12%	100%
2002-03	3,655	4,992	3,872	1,642	9,337	3,844	284	1,717	3,365	32,708
	11%	15%	12%	5%	29%	12%	1%	5%	10%	100%
2003-04	5,893	7,463	4,132	1,505	10,883	4,253	221	1,862	2,618	38,830
	15%	19%	11%	4%	28%	11%	1%	5%	7%	100%
2004-05	2,184	2,884	1,705	1,210	5,134	3,383	172	773	2,024	19,470
	11%	15%	9%	6%	26%	17%	1%	4%	10%	100%
2005-06	3,015	4,005	2,566	1,153	6,473	2,938	234	733	1,733	22,850
	13%	18%	11%	5%	28%	13%	1%	3%	8%	100%
2006-07	3,895	5,704	4,595	1,044	5,928	3,109	116	706	1,493	26,590
	15%	21%	17%	4%	22%	12%	0%	3%	6%	100%
2007-08	2,475	4,628	5,146	1,418	5,780	2,973	329	1,667	1,252	25,668
	10%	18%	20%	6%	23%	12%	1%	6%	5%	100%
2008-09	4,530	3,883	3,588	1,240	5,755	2,237	390	1,623	1,574	24,820
	18%	16%	14%	5%	23%	9%	2%	7%	6%	100%

**SUNFLOWER SHIPMENTS
by crop reporting district origin, 2007-08**

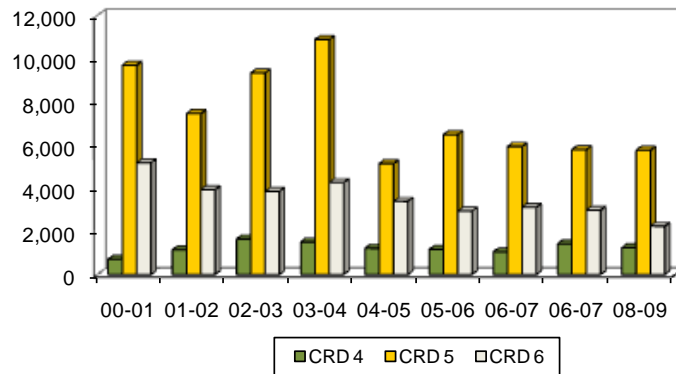


**SUNFLOWER SHIPMENTS
BY CROP REPORTING DISTRICT
(Thousand Bushels)**

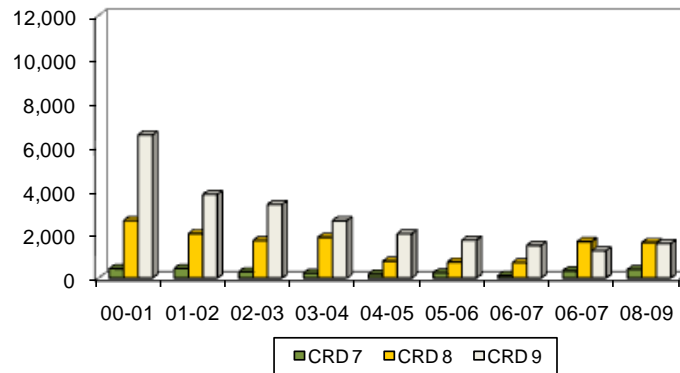
Northern Crop Reporting Districts



Central Crop Reporting Districts



Southern Crop Reporting Districts



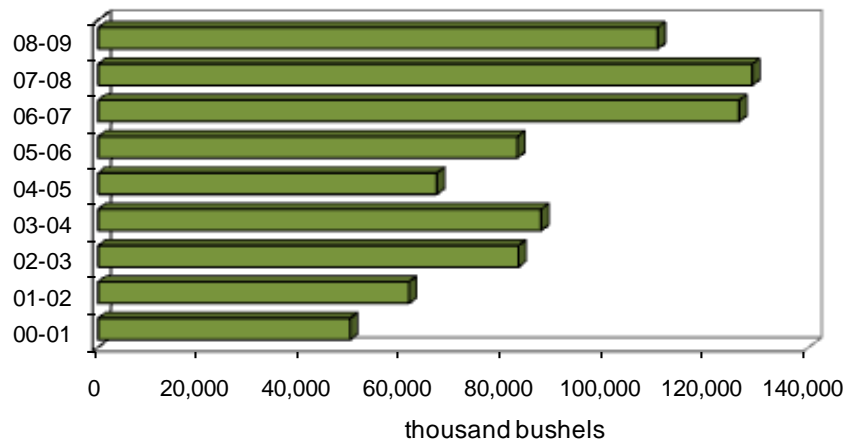
SOYBEANS

**NORTH DAKOTA SOYBEAN SHIPMENTS
BY DESTINATION
thousand bu.**

YEAR	Minneapolis- St. Paul	Duluth- Superior	PNW	North Dakota	Other Minn. & Wisconsin	Midland & Gulf	Other	TOTAL
2000-01	5,386	13,523	17,296	1,626	1,986	2,129	7,670	49,617
	11%	27%	35%	3%	4%	4%	15%	100%
2001-02	6,075	13,469	21,010	5,632	5,191	1,219	8,631	61,228
	10%	22%	34%	9%	9%	2%	14%	100%
2002-03	5,791	15,473	32,233	9,436	7,262	1,824	10,765	82,784
	7%	19%	39%	11%	9%	2%	13%	100%
2003-04	7,573	10,292	42,919	10,188	7,643	493	8,152	87,260
	9%	12%	49%	12%	9%	1%	9%	100%
2004-05	6,231	5,718	31,333	6,903	3,411	639	12,497	66,732
	9%	9%	47%	10%	5%	1%	19%	100%
2005-06	5,787	3,807	50,579	6,419	2,827	717	12,439	82,575
	7%	5%	61%	8%	3%	1%	15%	100%
2006-07	8,876	2,398	93,098	5,338	3,192	1,265	12,071	126,238
	7%	2%	74%	4%	3%	1%	10%	100%
2007-08	7,781	702	9,408	5,465	3,841	3,112	13,929	128,838
	6%	1%	73%	4%	3%	2%	11%	100%
2008-09	6,096	1	83,365	4,314	4,804	1,252	10,374	110,207
	6%	0%	76%	4%	4%	1%	9%	100%

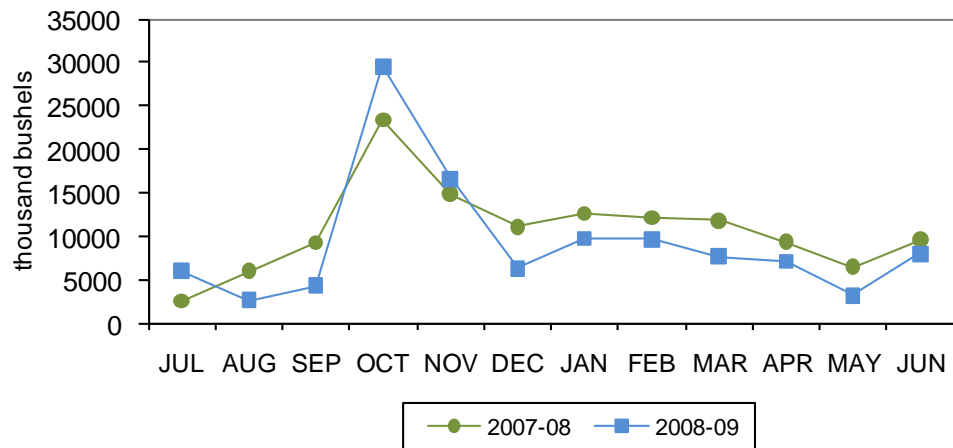
SOYBEAN SHIPMENTS

2000-01 to 2008-09



SOYBEAN SHIPMENTS

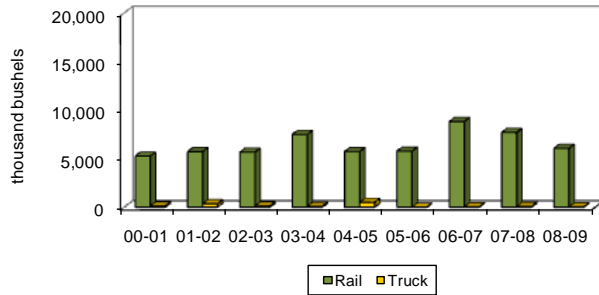
by month, 2007-08 to 2008-09



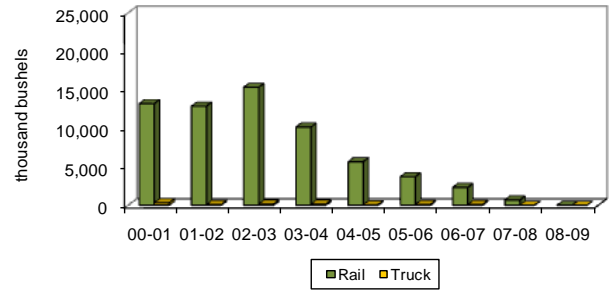
**NORTH DAKOTA SOYBEAN SHIPMENTS
BY RAIL, TRUCK AND DESTINATION
thousand bu.**

YEAR	Minneapolis- St. Paul		Duluth- Superior		PNW		North Dakota		Other Minn. & Wisconsin		Midland & Gulf		Other		TOTAL	
	Rail	Truck	Rail	Truck	Rail	Truck	Rail	Truck	Rail	Truck	Rail	Truck	Rail	Truck	Rail	Truck
2000-01	5,268	118	13,200	324	17,079	217	121	1,505	1,111	875	2,124	5	7,118	552	46,021	3,596
	98%	2%	98%	2%	99%	1%	7%	93%	56%	44%	100%	0%	93%	7%	93%	7%
2001-02	5,722	353	12,871	598	20,879	131	607	5,025	3,398	1,793	1,149	70	8,107	524	52,732	8,495
	94%	6%	96%	4%	99%	1%	11%	89%	65%	35%	94%	6%	94%	6%	86%	14%
2002-03	5,666	125	15,329	145	32,233	0	1,862	7,573	5,208	2,054	1,791	32	9,753	1,012	71,842	10,942
	98%	2%	99%	1%	100%	0%	20%	80%	72%	28%	98%	2%	91%	9%	87%	13%
2003-04	7,494	78	10,153	140	42,712	207	1,963	8,225	5,150	2,493	458	35	6,792	1,361	74,721	12,539
	99%	1%	99%	1%	100%	0%	19%	81%	67%	33%	93%	7%	83%	17%	86%	14%
2004-05	5,736	495	5,652	65	31,316	17	964	5,939	1,582	1,829	525	114	10,920	1,578	56,695	10,037
	92%	8%	99%	1%	100%	0%	14%	86%	46%	54%	82%	18%	87%	13%	85%	15%
2005-06	5,777	10	3,707	100	50,554	25	1,689	4,730	1,358	1,469	557	159	10,671	1,767	74,315	8,260
	100%	0%	97%	3%	100%	0%	26%	74%	48%	52%	78%	22%	86%	14%	90%	10%
2006-07	8,828	47	2,308	89	93,047	51	994	4,344	1,357	1,835	1,241	24	10,461	1,610	118,237	8,001
	99%	1%	96%	4%	100%	0%	19%	81%	43%	57%	98%	2%	87%	13%	94%	6%
2007-08	7,700	81	682	19	93,363	645	1,971	3,493	1,960	1,880	3,049	63	13,167	762	121,893	6,945
	99%	1%	97%	3%	99%	1%	36%	64%	51%	49%	98%	2%	95%	5%	95%	5%
2008-09	6,065	31	0	1	83,325	40	1,881	2,433	1,283	3,521	1,034	219	8,745	1,628	102,333	7,873
	99%	1%	0%	100%	100%	0%	44%	56%	27%	73%	83%	17%	84%	16%	93%	7%

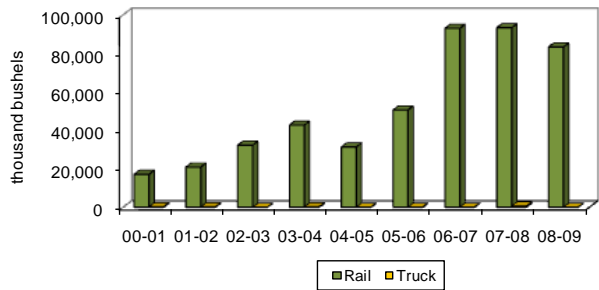
Soybeans to Minneapolis-St. Paul
2000-01 to 2008-09



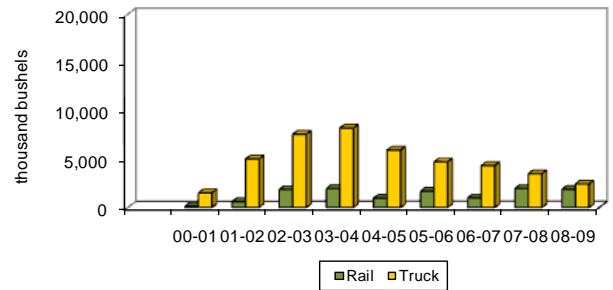
Soybeans to Duluth-Superior
2000-01 to 2008-09



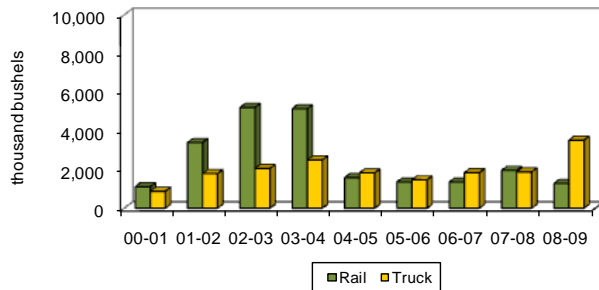
Soybeans to PNW
2000-01 to 2008-09



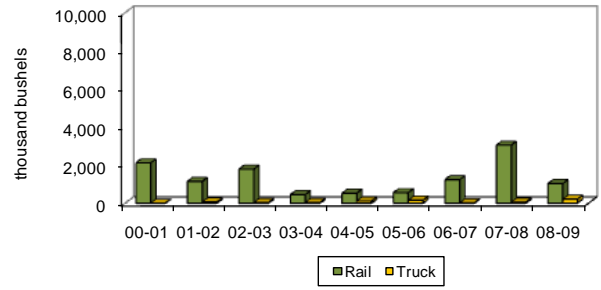
Soybeans to North Dakota
2000-01 to 2008-09



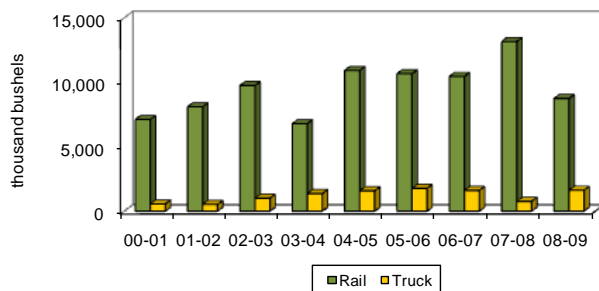
Soybeans to Other Minnesota & Wisconsin
2000-01 to 2008-09



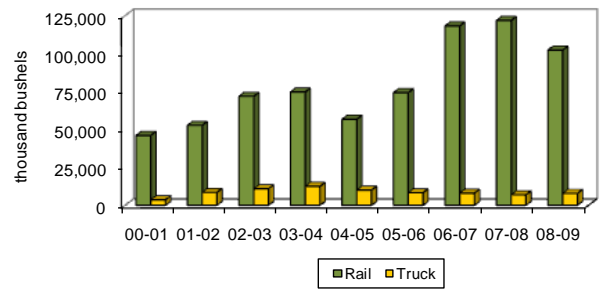
Soybeans to Midland & Gulf
2000-01 to 2008-09



Soybeans to Other Markets
2000-01 to 2008-09

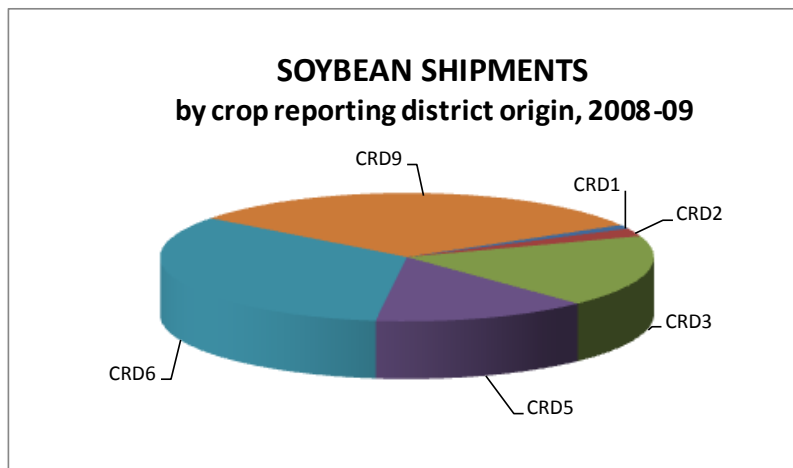


Total Soybean Shipments
2000-01 to 2008-09



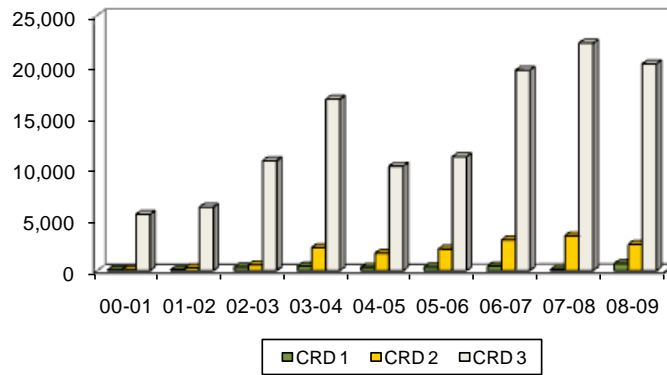
**NORTH DAKOTA SOYBEAN SHIPMENTS
BY CROP REPORTING DISTRICT ORIGIN
thousand bu.**

YEAR	Crop Reporting District									TOTAL
	1	2	3	4	5	6	7	8	9	
2000-01	62	50	5,493	29	1,901	22,468	25	130	19,459	49,617
	0%	0%	11%	0%	4%	45%	0%	0%	39%	100%
2001-02	97	274	6,193	91	4,404	27,417	3	191	22,557	61,228
	0%	0%	10%	0%	7%	45%	0%	0%	37%	100%
2002-03	342	558	10,742	59	9,638	38,991	0	256	22,197	82,784
	0%	1%	13%	0%	12%	47%	0%	0%	27%	100%
2003-04	426	2,241	16,779	84	9,603	37,357	1	76	20,694	87,260
	0%	3%	19%	0%	11%	43%	0%	0%	24%	100%
2004-05	325	1,678	10,231	93	10,301	18,981	0	159	24,964	66,732
	0%	3%	15%	0%	15%	28%	0%	0%	37%	100%
2005-06	352	2,093	11,145	21	13,423	27,030	0	135	28,377	82,575
	0%	3%	13%	0%	16%	33%	0%	0%	34%	100%
2006-07	454	2,999	19,624	48	15,604	52,727	0	60	34,722	126,238
	0%	2%	16%	0%	12%	42%	0%	0%	28%	100%
2007-08	127	3,398	22,258	31	20,951	44,040	0	76	37,958	128,838
	0%	3%	17%	0%	16%	34%	0%	0%	29%	100%
2008-09	666	2,554	20,231	25	15,852	36,593	0	123	34,160	110,207
	1%	2%	18%	0%	14%	33%	0%	0%	31%	100%

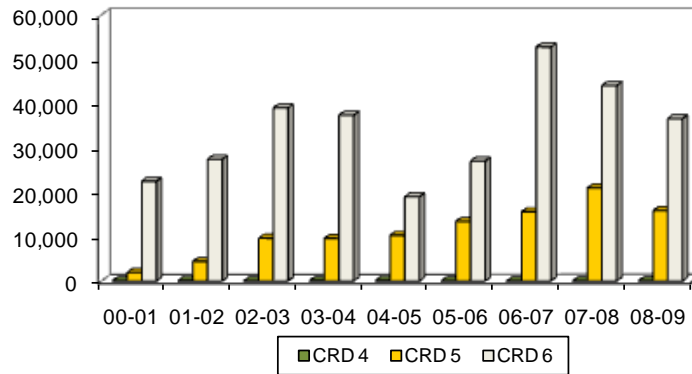


**SOYBEAN SHIPMENTS
BY CROP REPORTING DISTRICT
(Thousand Bushels)**

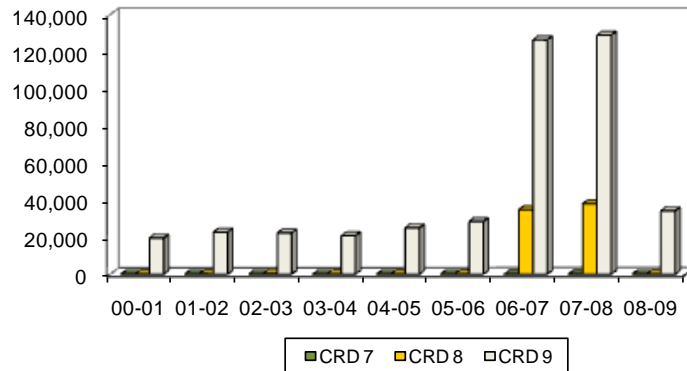
Northern Crop Reporting Districts



Central Crop Reporting Districts



Southern Crop Reporting Districts

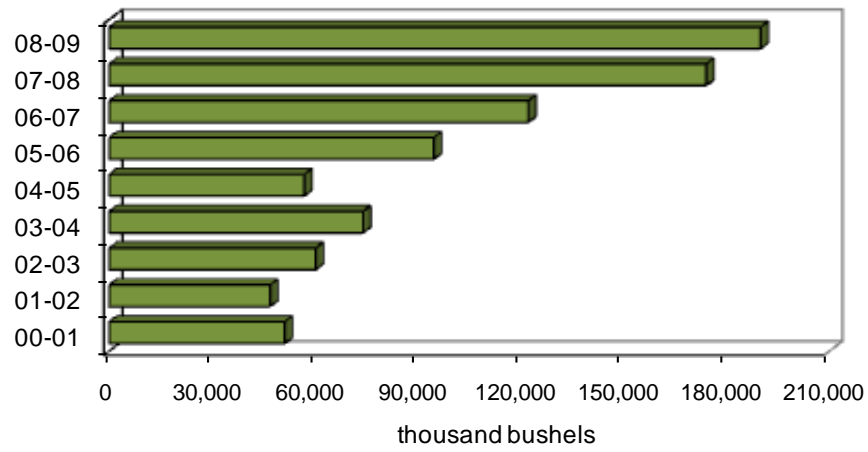


Corn

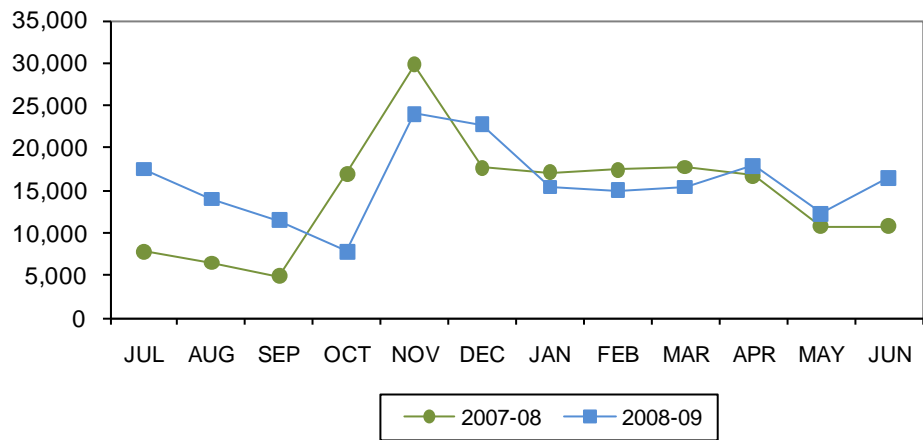
**NORTH DAKOTA CORN SHIPMENTS
BY DESTINATION
thousand bu.**

YEAR	Minneapolis- St. Paul	Duluth- Superior	PNW	North Dakota	Other Minn. & Wisconsin	Midland & Gulf	Other	TOTAL
2000-01	3,435	3,417	13,604	8,435	2,559	4,585	15,094	51,130
	7%	7%	27%	16%	5%	9%	30%	100%
2001-02	2,793	318	5,447	8,997	2,048	1,658	25,565	46,827
	6%	1%	12%	19%	4%	4%	55%	100%
2002-03	2,872	954	6,488	12,183	1,014	1,303	35,332	60,147
	5%	2%	11%	20%	2%	2%	59%	100%
2003-04	3,905	8	2,964	14,169	3,407	1,399	21,451	73,981
	5%	0%	40%	19%	5%	2%	29%	100%
2004-05	3,438	0	20,452	13,060	754	493	18,624	56,821
	6%	0%	36%	23%	1%	1%	33%	100%
2005-06	2,991	0	47,921	16,555	2,366	1,726	23,059	94,619
	3%	0%	51%	17%	3%	2%	24%	100%
2006-07	4,823	114	63,365	21,753	4,087	1,646	26,370	122,159
	4%	0%	52%	18%	3%	1%	22%	100%
2007-08	6,930	72	78,985	38,125	2,327	1,724	45,896	174,058
	4%	0%	45%	22%	1%	1%	26%	100%
2008-09	10,891	1	80,482	56,657	8,961	2,906	30,003	189,900
	6%	0%	42%	30%	5%	2%	16%	100%

CORN SHIPMENTS 2000-01 to 2008-09



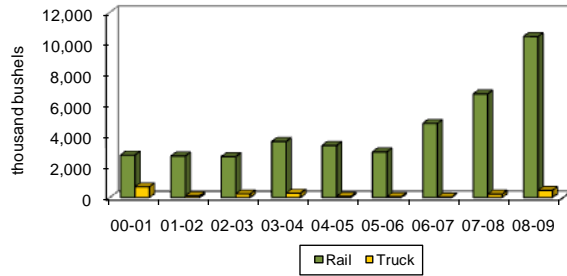
CORN SHIPMENTS by month, 2007-08 to 2008-09



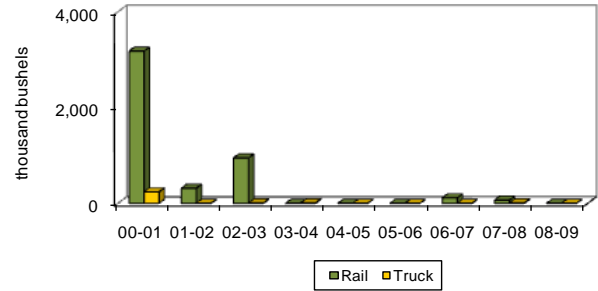
**NORTH DAKOTA CORN SHIPMENTS
BY RAIL, TRUCK AND DESTINATION
thousand bu.**

YEAR	Minneapolis- St. Paul		Duluth- Superior		PNW		North Dakota		Other Minn. & Wisconsin		Midland & Gulf		Other		TOTAL	
	Rail	Truck	Rail	Truck	Rail	Truck	Rail	Truck	Rail	Truck	Rail	Truck	Rail	Truck	Rail	Truck
2000-01	2,747	688	3,179	238	13,531	73	1,749	6,686	2,020	538	3,965	620	11,208	3,886	38,400	12,730
	80%	20%	93%	7%	99%	1%	21%	79%	79%	21%	86%	14%	74%	26%	75%	25%
2001-02	2,687	106	314	4	5,410	37	2,349	6,648	1,424	624	1,223	435	17,627	7,938	31,034	15,793
	96%	4%	99%	1%	99%	1%	26%	74%	70%	30%	74%	26%	69%	31%	66%	34%
2002-03	2,647	225	947	7	628	360	3,429	8,753	494	520	544	759	23,494	11,838	37,684	22,462
	92%	8%	99%	1%	94%	6%	28%	72%	49%	51%	42%	58%	66%	34%	63%	37%
2003-04	3,629	276	0	8	29,359	283	3,682	10,487	2,672	735	945	454	14,344	7,107	54,631	19,350
	93%	7%	0%	100%	99%	1%	26%	74%	78%	22%	68%	32%	67%	33%	74%	26%
2004-05	3,368	70	0	0	20,399	54	4,058	9,001	251	503	124	369	14,168	4,456	42,367	14,453
	98%	2%	0%	0%	100%	0%	31%	69%	33%	67%	25%	75%	76%	24%	75%	25%
2005-06	2,952	40	0	0	47,781	140	4,809	11,745	1,460	906	1,195	532	15,327	7,733	73,523	21,095
	99%	1%	0%	0%	100%	0%	29%	71%	62%	38%	69%	31%	66%	34%	78%	26%
2006-07	4,796	27	114	0	63,106	259	8,588	13,166	2,935	1,152	1,096	551	17,240	9,130	97,875	24,284
	99%	1%	100%	0%	100%	0%	39%	61%	72%	28%	67%	33%	65%	35%	80%	20%
2007-08	6,710	220	66	6	78,969	16	15,952	22,173	1,839	488	1,425	300	22,967	22,929	127,927	46,131
	97%	3%	92%	8%	100%	0%	42%	58%	79%	21%	83%	17%	50%	50%	73%	27%
2008-09	10,435	456	0	1	79,538	944	24,298	32,359	2,911	6,050	2,251	655	13,919	16,084	133,351	56,549
	96%	4%	0%	100%	99%	1%	43%	57%	32%	68%	77%	23%	46%	54%	70%	30%

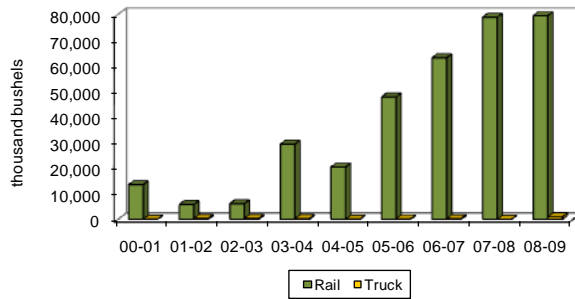
Corn to Minneapolis-St. Paul
2000-01 to 2008-09



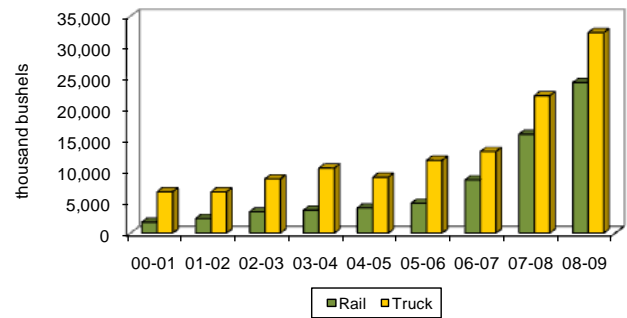
Corn to Duluth-Superior
2000-01 to 2008-09



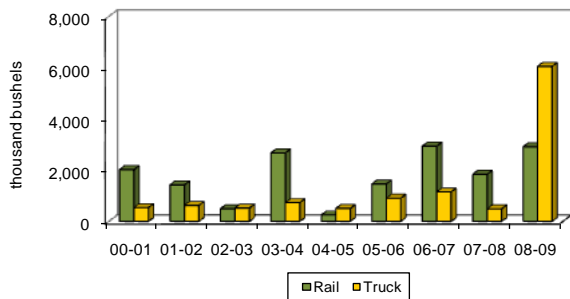
Corn to PNW
2000-01 to 2008-09



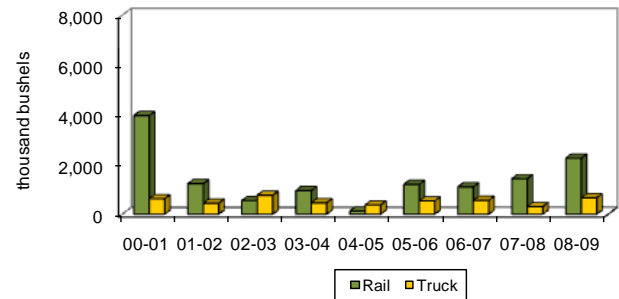
Corn to North Dakota
2000-01 to 2008-09



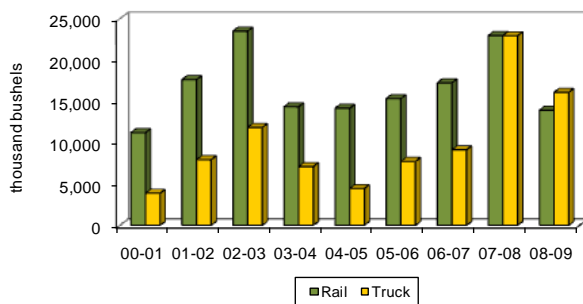
Corn to Other Minnesota & Wisconsin
2000-01 to 2008-09



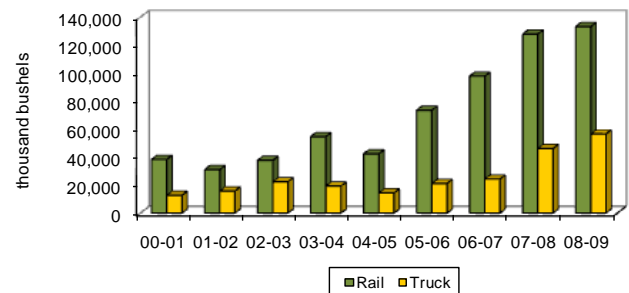
Corn to Midland & Gulf
2000-01 to 2008-09



Corn to Other Markets
2000-01 to 2008-09

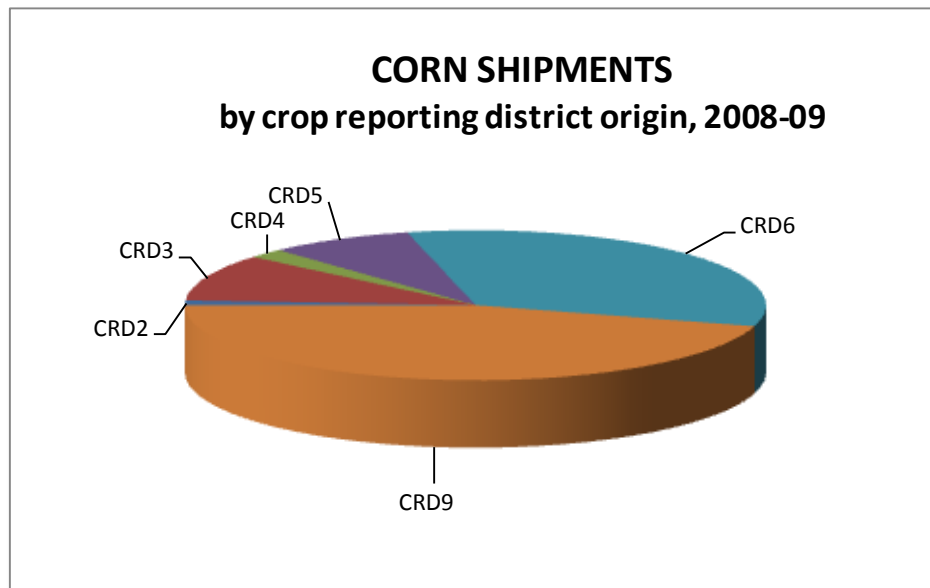


Total Corn Shipments
2000-01 to 2008-09



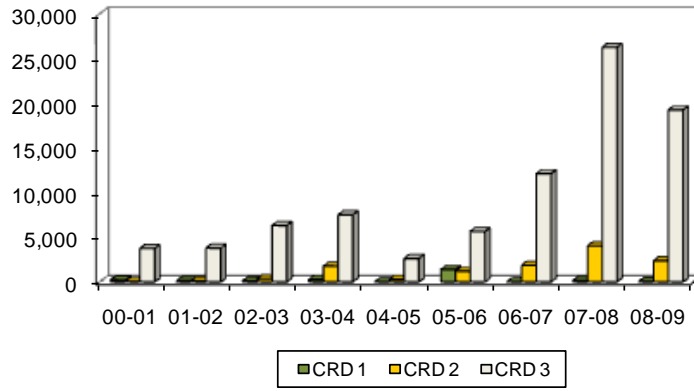
**NORTH DAKOTA CORN SHIPMENTS
BY CROP REPORTING DISTRICT
thousand bu.**

YEAR	Crop Reporting District									TOTAL
	1	2	3	4	5	6	7	8	9	
2000-01	222	35	3,751	18	919	14,284	NA	28	31,872	51,130
	0%	0%	7%	0%	2%	28%	NA	0%	62%	100%
2001-02	153	124	3,782	20	989	9,327	16	199	32,218	46,827
	0%	0%	8%	0%	2%	20%	0%	0%	69%	100%
2002-03	120	361	6,304	14	1,191	18,600	2	31	33,524	60,147
	0%	1%	10%	0%	2%	31%	0%	0%	56%	100%
2003-04	272	1,774	7,510	175	4,001	28,431	3	230	31,586	73,981
	0%	2%	10%	0%	5%	38%	0%	0%	43%	100%
2004-05	9	279	2,614	4	887	12,576	0	43	40,371	56,821
	0%	0%	5%	0%	2%	22%	0%	0%	71%	100%
2005-06	1,391	1,200	5,649	17	5,855	28,326	17	439	51,725	94,619
	1%	1%	6%	0%	6%	30%	0%	0%	55%	100%
2006-07	2	1,852	12,108	773	8,229	41,180	129	97	57,789	122,159
	0%	2%	10%	1%	7%	34%	0%	0%	47%	100%
2007-08	163	4,029	26,247	3,607	16,818	57,021	184	690	65,300	174,058
	0%	2%	15%	2%	10%	33%	0%	0%	38%	100%
2008-09	64	2,370	19,240	3,659	15,316	63,020	95	855	85,281	189,900
	0%	1%	10%	2%	8%	33%	0%	0%	45%	100%

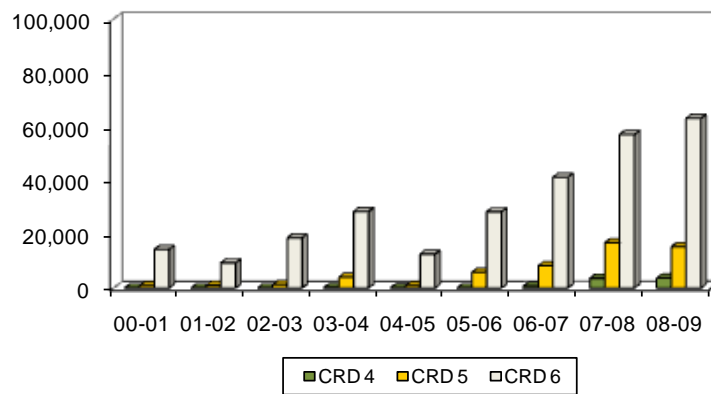


**CORN SHIPMENTS
BY CROP REPORTING DISTRICT
(Thousand Bushels)**

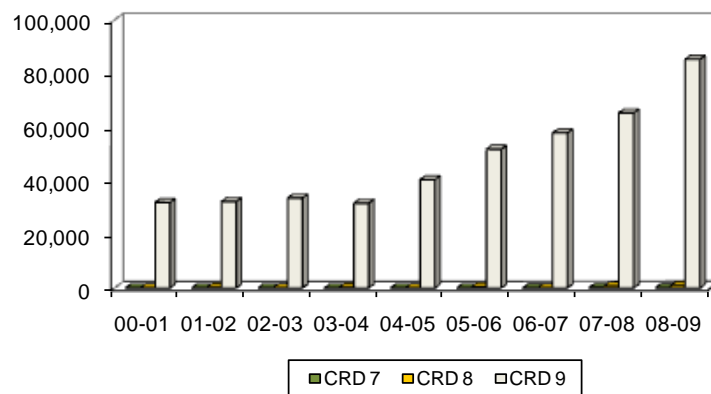
Northern Crop Reporting Districts



Central Crop Reporting Districts



Southern Crop Reporting Districts



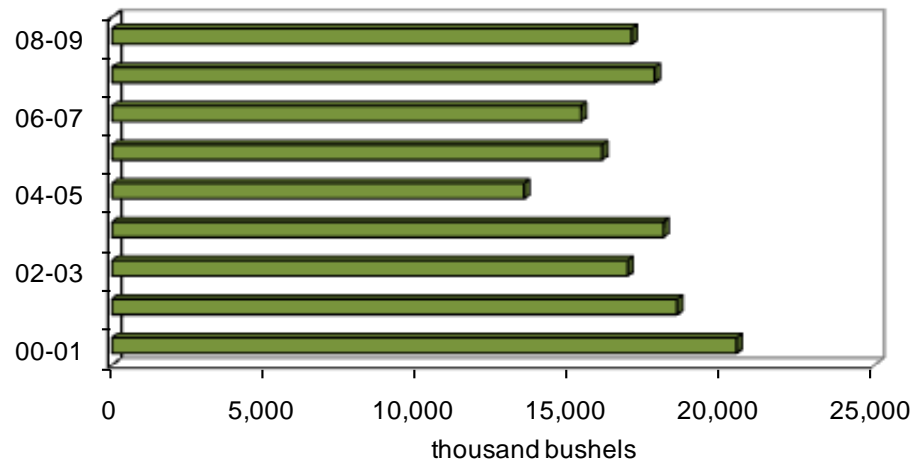
CANOLA

**NORTH DAKOTA CANOLA SHIPMENTS
BY DESTINATION
thousand bu.**

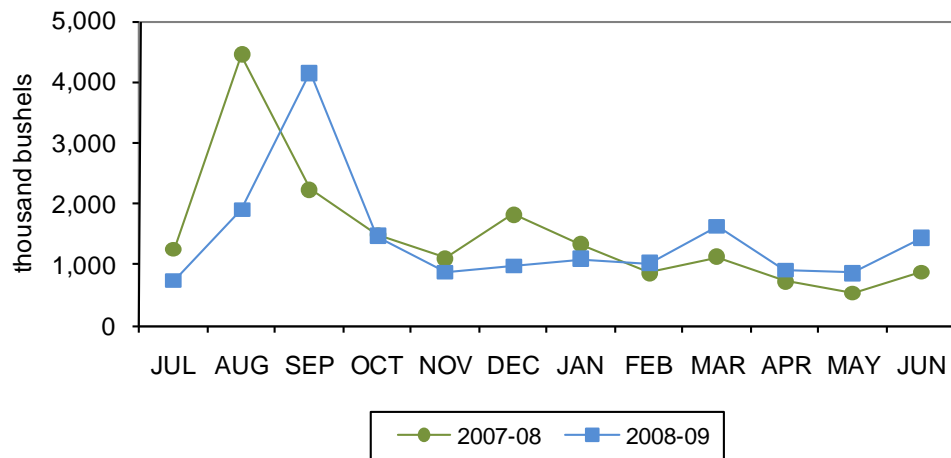
YEAR	Minneapolis- St. Paul	Duluth- Superior	PNW	North Dakota	Other Minn. & Wisconsin	Midland & Gulf	Other	TOTAL
2000-01	794	594	56	13,225	171	14	5,613	20,468
	4%	3%	0%	65%	1%	0%	27%	100%
2001-02	309	53	11	11,183	58	29	6,885	18,527
	2%	0%	0%	60%	0%	0%	37%	100%
2002-03	1,721	37	0	9,404	92	0	5,646	16,900
	10%	0%	0%	56%	1%	0%	33%	100%
2003-04	1,469	11	48	9,491	29	0	7,027	18,075
	8%	0%	0%	53%	0%	0%	39%	100%
2004-05	453	7	0	9,374	103	272	3,297	13,505
	3%	0%	0%	69%	1%	2%	24%	100%
2005-06	786	1	42	10,666	21	191	4,359	16,066
	5%	0%	0%	66%	0%	1%	27%	100%
2006-07	1,278	1	37	8,865	0	10	5,180	15,372
	8%	0%	0%	58%	0%	0%	34%	100%
2007-08	790	0	88	11,325	3	0	5,582	17,788
	4%	0%	0%	64%	0%	0%	31%	100%
2008-09	790	0	88	11,325	3	0	5,582	17,788
	4%	0%	0%	64%	0%	0%	31%	100%

CANOLA SHIPMENTS

2000-01 to 2008-09



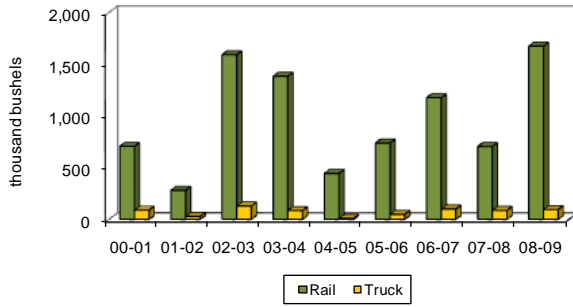
CANOLA SHIPMENTS by month, 2007-08 to 2008-09



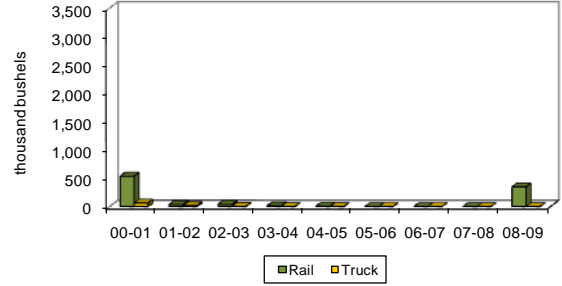
**NORTH DAKOTA CANOLA SHIPMENTS
BY RAIL, TRUCK AND DESTINATION
thousand bu.**

YEAR	Minneapolis-St. Paul		Duluth-Superior		PNW		North Dakota		Other Minn. & Wisconsin		Midland & Gulf		Other		TOTAL	
	Rail	Truck	Rail	Truck	Rail	Truck	Rail	Truck	Rail	Truck	Rail	Truck	Rail	Truck	Rail	Truck
2000-01	706	89	534	60	14	42	3,642	9,584	126	45	14	0	2,382	3,231	7,417	13,051
	89%	11%	90%	10%	25%	75%	28%	72%	74%	26%	100%	0%	42%	58%	36%	64%
2001-02	281	28	35	18	0	11	3,329	7,854	52	6	20	8	1,893	4,992	5,609	12,918
	91%	9%	66%	34%	0%	100%	30%	70%	89%	11%	71%	29%	27%	73%	30%	70%
2002-03	1,592	129	36	2	0	0	2,136	7,268	3	88	0	0	1,370	4,276	5,136	11,763
	92%	8%	95%	5%	0%	0%	23%	77%	4%	96%	0%	0%	26%	74%	30%	70%
2003-04	1,384	85	11	0	0	48	1,499	7,992	0	29	0	0	1,750	5,277	4,644	13,432
	94%	6%	100%	0%	0%	100%	16%	84%	0%	100%	0%	0%	25%	75%	26%	74%
2004-05	444	9	7	0	0	0	1,540	7,834	101	2	271	1	1,097	2,200	3,459	10,045
	98%	2%	100%	0%	0%	0%	16%	84%	98%	2%	100%	0%	33%	67%	26%	74%
2005-06	738	48	0	1	40	2	1,813	8,853	20	1	190	1	1,220	3,139	4,021	12,045
	94%	6%	0%	100%	96%	4%	17%	83%	95%	5%	99%	1%	28%	72%	25%	75%
2006-07	1,177	100	0	1	37	0	1,345	7,520	0	0	0	10	154	5,027	2,714	12,68
	92%	8%	0%	100%	100%	0%	15%	85%	0%	0%	0%	100%	3%	97%	18%	82%
2007-08	704	86	0	0	88	0	2,330	8,995	0	3	0	0	788	4,795	3,909	13,879
	89%	11%	0%	0%	100%	0%	21%	79%	0%	100%	0%	0%	14%	86%	22%	78%
2008-09	1,675	95	347	0	0	122	1,750	9,657	132	22	0	0	1,165	2,065	5,070	11,961
	95%	5%	100%	0%	0%	100%	15%	85%	86%	14%	0%	0%	36%	64%	30%	70%

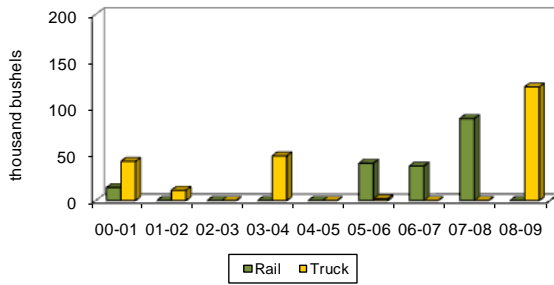
Canola to Minneapolis-St. Paul
2000-01 to 2008-09



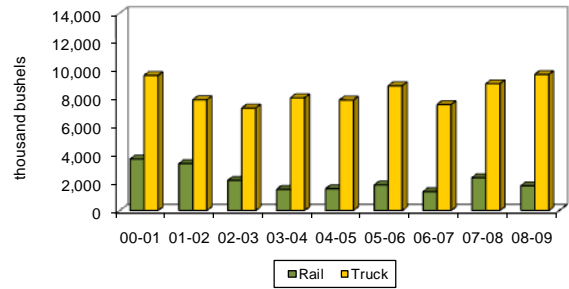
Canola to Duluth-Superior
2000-01 to 2008-09



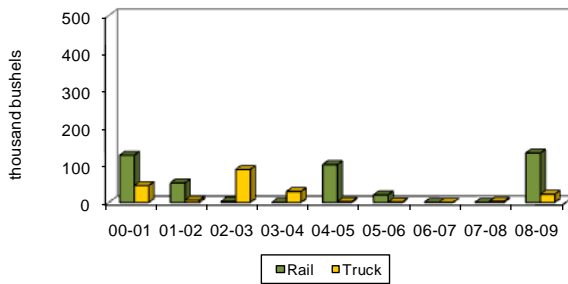
Canola to PNW
2000-01 to 2008-09



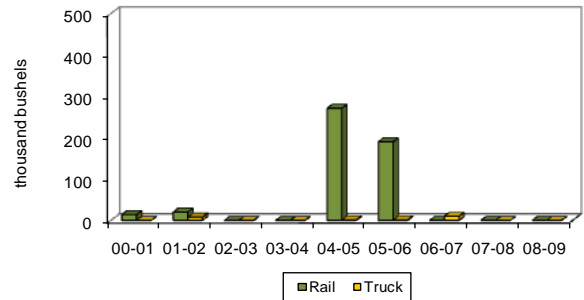
Canola to North Dakota
2000-01 to 2008-09



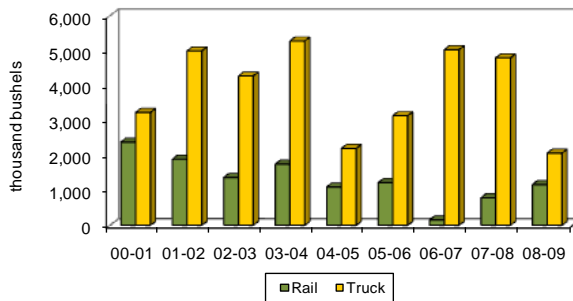
Canola to Other Minnesota & Wisconsin
2000-01 to 2008-09



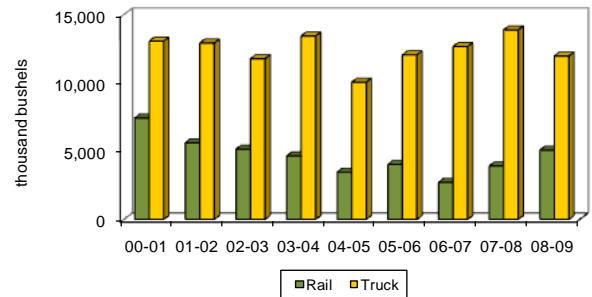
Canola to Midland & Gulf
2000-01 to 2008-09



Canola to Other Markets
2000-01 to 2008-09

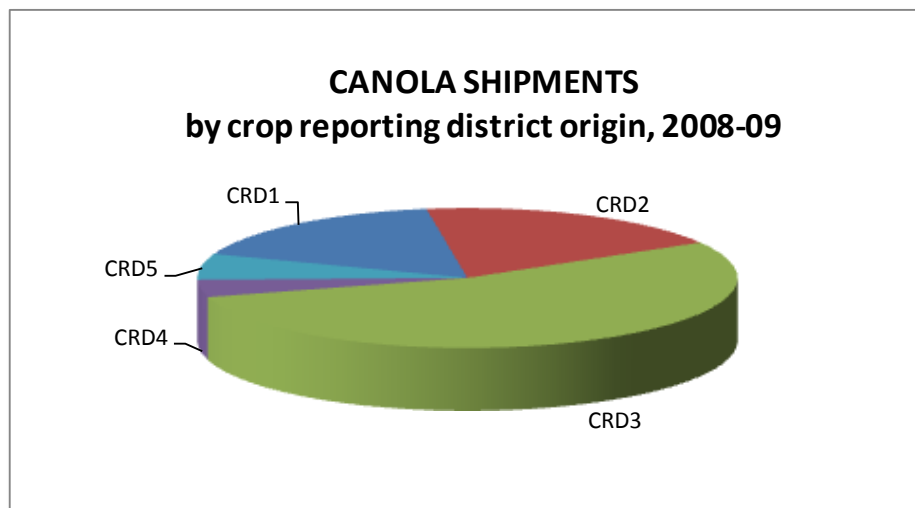


Total Canola Shipments
2000-01 to 2008-09



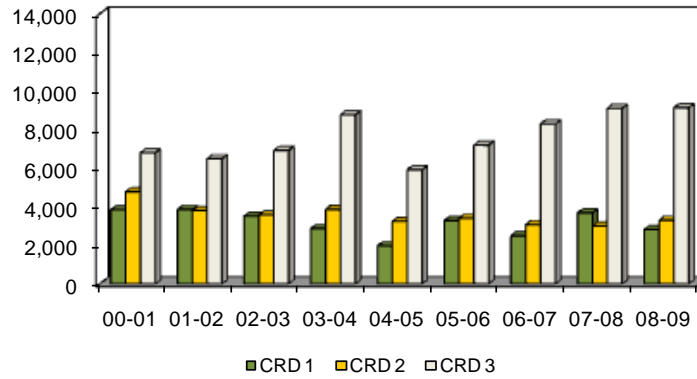
**NORTH DAKOTA CANOLA SHIPMENTS
BY CROP REPORTING DISTRICT
thousand bu.**

YEAR	Crop Reporting District									TOTAL
	1	2	3	4	5	6	7	8	9	
2000-01	3,846	4,780	6,799	1,717	1,704	462	409	182	569	20,468
	19%	23%	33%	8%	8%	2%	2%	1%	3%	100%
2001-02	3,857	3,800	6,494	1,569	1,576	216	462	300	253	18,527
	21%	21%	35%	8%	9%	1%	2%	2%	1%	100%
2002-03	3,515	3,580	6,926	1,390	1,136	141	139	10	62	16,900
	21%	21%	41%	8%	7%	1%	1%	0%	0%	100%
2003-04	2,873	3,862	8,768	1,104	1,116	79	157	61	54	18,075
	16%	21%	49%	6%	6%	0%	1%	0%	0%	100%
2004-05	1,978	3,247	5,917	1,105	894	253	44	37	30	13,505
	15%	24%	44%	8%	7%	2%	0%	0%	0%	100%
2005-06	3,283	3,408	7,195	661	1,055	84	75	20	285	16,066
	20%	21%	45%	4%	7%	1%	0%	0%	2%	100%
2006-07	2,501	3,073	8,292	772	643	5	36	0	49	15,372
	16%	20%	54%	5%	4%	0%	0%	0%	0%	100%
2007-08	3,680	3,001	9,104	975	464	1	26	5	532	17,788
	21%	17%	51%	5%	3%	0%	0%	0%	3%	100%
2008-09	2,824	3,299	9,135	722	1,039	3	4	4	0	17,031
	17%	19%	54%	4%	6%	0%	0%	0%	0%	100%

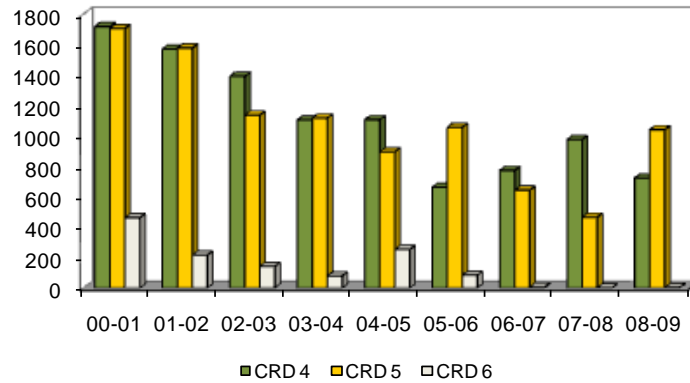


**CANOLA SHIPMENTS
BY CROP REPORTING DISTRICT
(Thousand Bushels)**

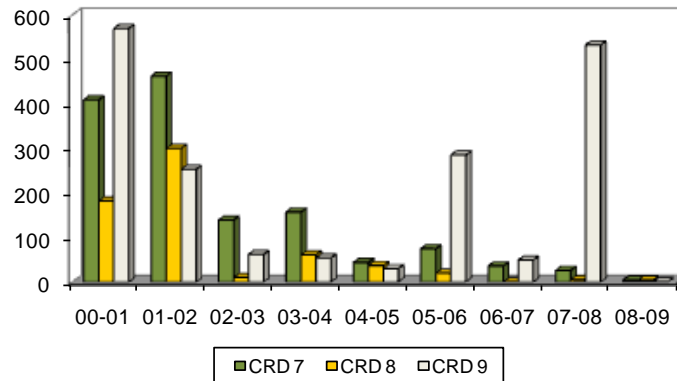
Northern Crop Reporting Districts



Central Crop Reporting Districts



Southern Crop Reporting Districts



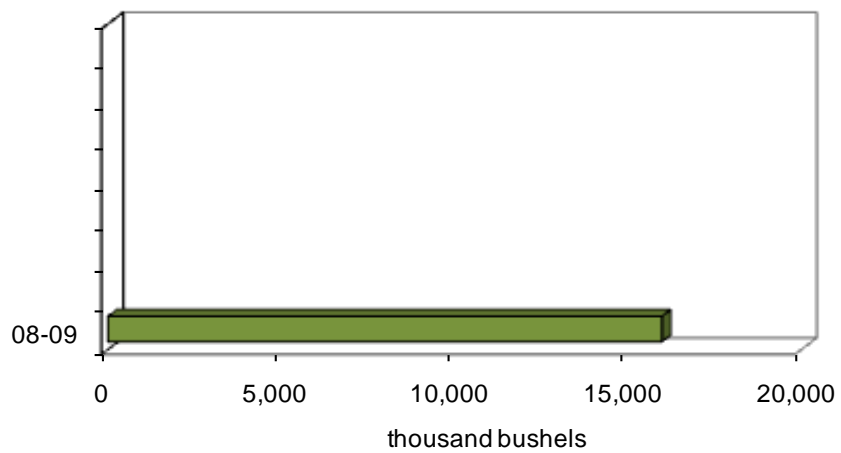
DRY EDIBLE BEANS

(DEB)

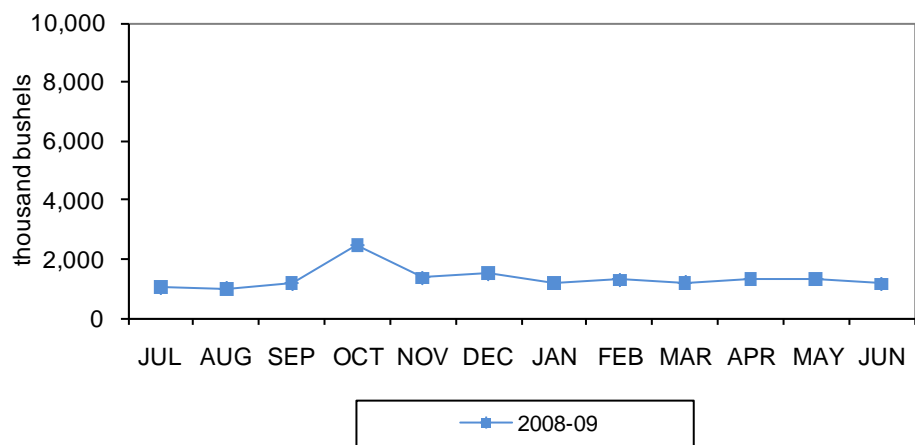
**NORTH DAKOTA DEB SHIPMENTS
BY DESTINATION
thousand bu.**

YEAR	Minneapolis- St. Paul	Duluth- Superior	PNW	North Dakota	Other Minn. & Wisconsin	Midland & Gulf	Other	TOTAL
2008-09	167	0	318	772	2,235	5,719	6,763	15,972
	1%	0%	2%	5%	14%	36%	42%	100%

DEBSHIPMENTS 2008-09



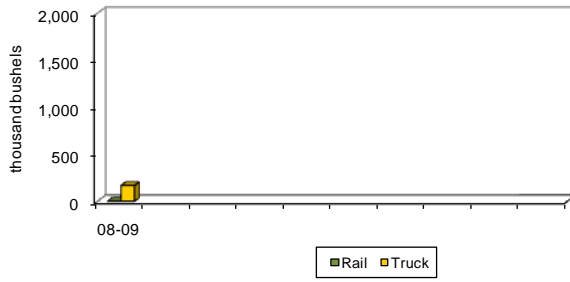
DEB SHIPMENTS by month, 2008-09



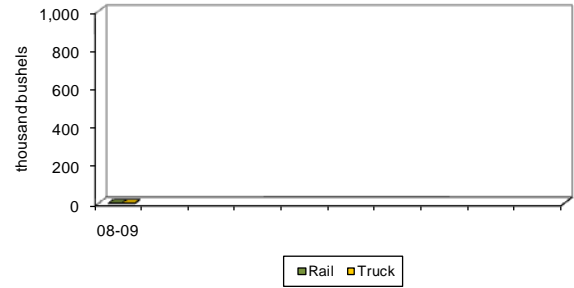
**NORTH DAKOTA DEB SHIPMENTS
BY RAIL, TRUCK AND DESTINATION
thousand bu.**

YEAR	Minneapolis-St. Paul		Duluth-Superior		PNW		North Dakota		Other Minn. & Wisconsin		Midland & Gulf		Other		TOTAL	
	Rail	Truck	Rail	Truck	Rail	Truck	Rail	Truck	Rail	Truck	Rail	Truck	Rail	Truck	Rail	Truck
2008-09	0	167	0	0	294	24	19	753	189	2,046	4,853	866	4,950	1,813	10,307	5,665
	100%	0%	0%	0%	92%	8%	2%	98%	8%	92%	85%	15%	73%	27%	65%	35%

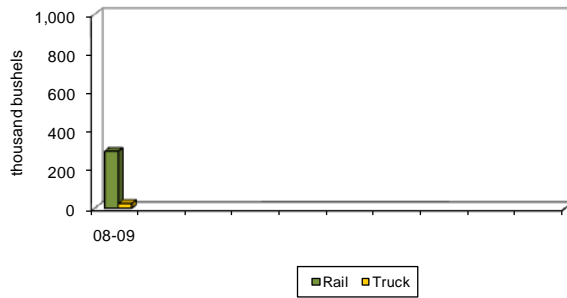
DEB to Minneapolis-St. Paul
2008-09



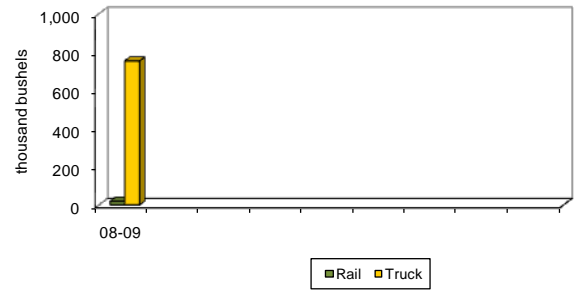
DEB to Duluth-Superior
2008-09



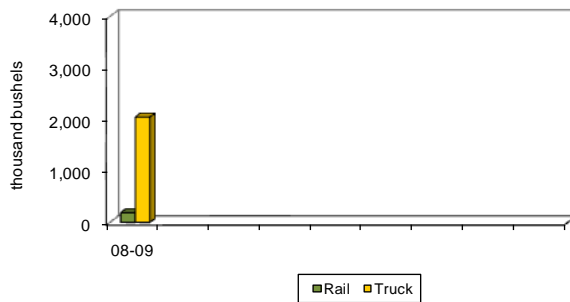
DEB to PNW
2008-09



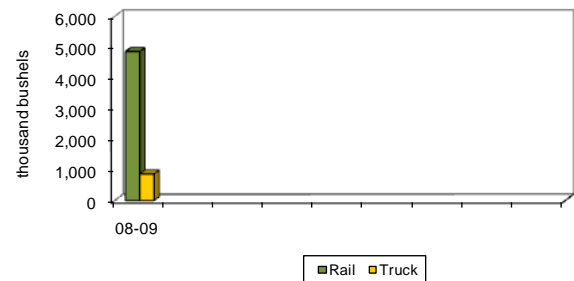
DEB to North Dakota
2008-09



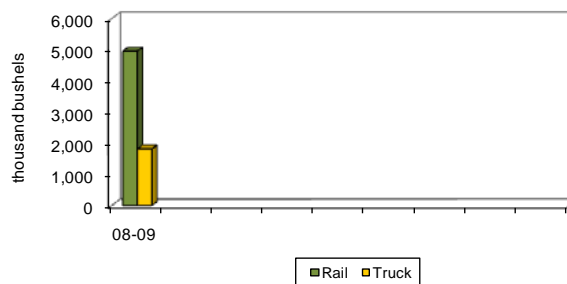
DEB to Other Minnesota & Wisconsin
2008-09



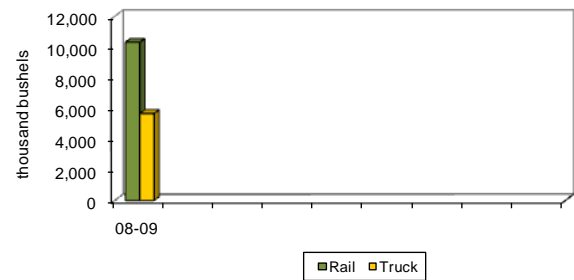
DEB to Midland & Gulf
2008-09



DEB to Other Markets
2008-09

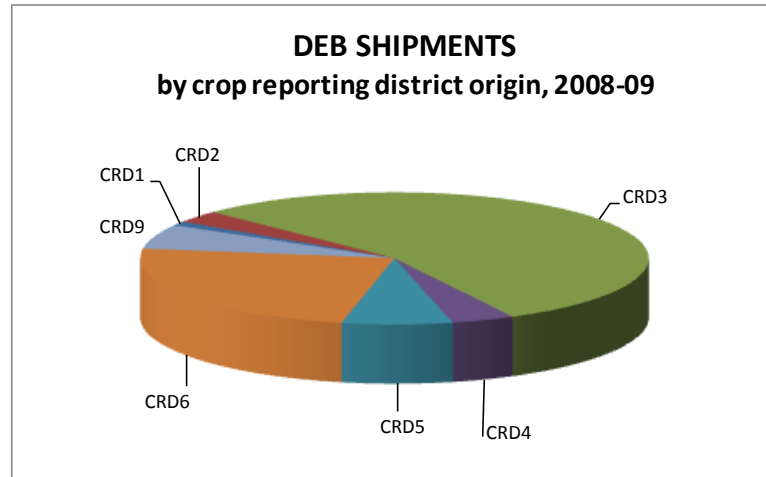


Total DEB Shipments
2008-09



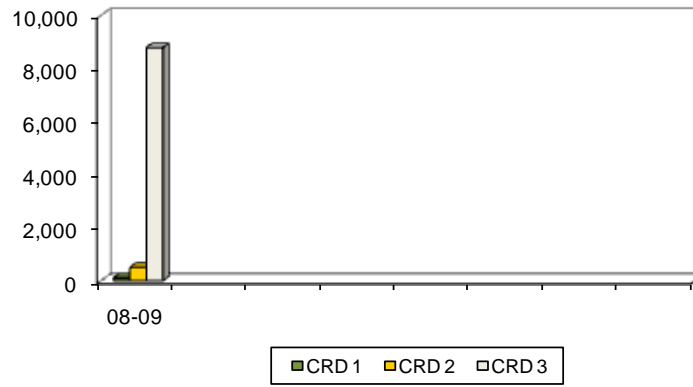
**NORTH DAKOTA DEB SHIPMENTS
BY CROP REPORTING DISTRICT
thousand bu.**

YEAR	Crop Reporting District									TOTAL
	1	2	3	4	5	6	7	8	9	
2008-09	106	505	8,787	605	1,189	3,840	58	0	882	15,972
	1%	3%	55%	4%	7%	24%	0%	0%	6%	100%

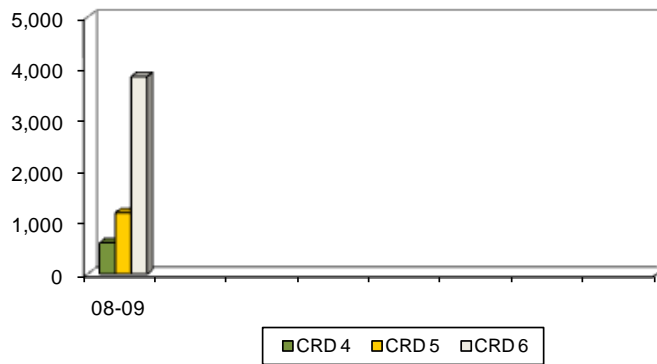


**DEB SHIPMENTS
BY CROP REPORTING DISTRICT
(Thousand Bushels)**

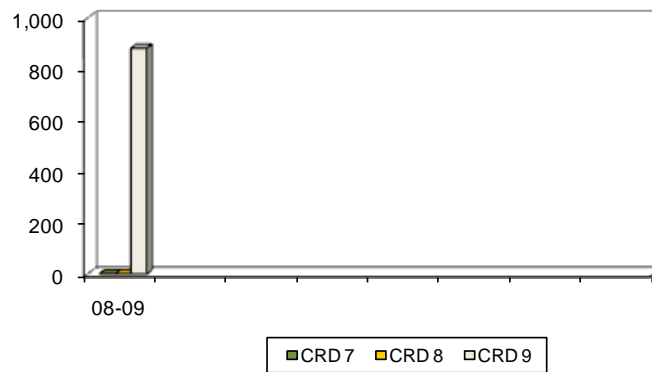
Northern Crop Reporting Districts



Central Crop Reporting Districts



Southern Crop Reporting Districts



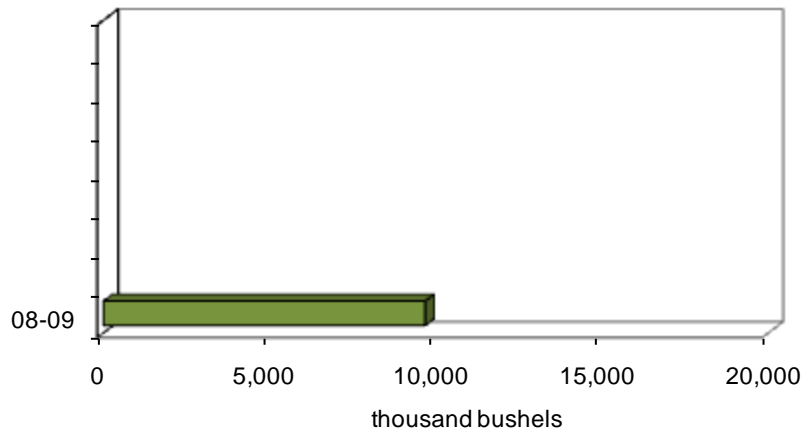
DRY EDIBLE PEAS

(DEPeas)

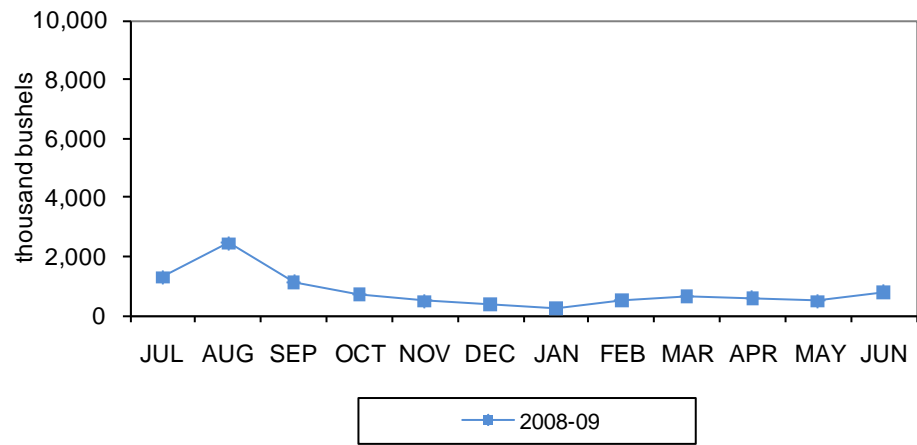
**NORTH DAKOTA DEPeas SHIPMENTS
BY DESTINATION
thousand bu.**

YEAR	Minneapolis- St. Paul	Duluth- Superior	PNW	North Dakota	Other Minn. & Wisconsin	Midland & Gulf	Other	TOTAL
2008-09	367	86	2,719	676	354	2,306	3,166	9,675
	4%	1%	28%	7%	4%	24%	33%	100%

DEPeasSHIPMENTS 2008-09



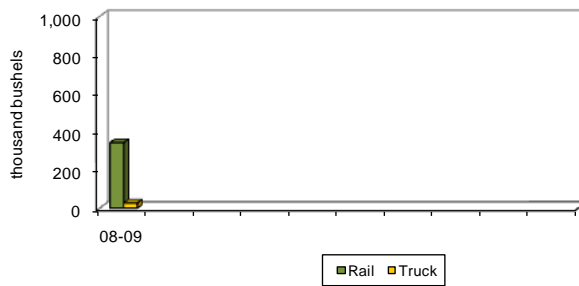
DEPeas SHIPMENTS by month, 2008-09



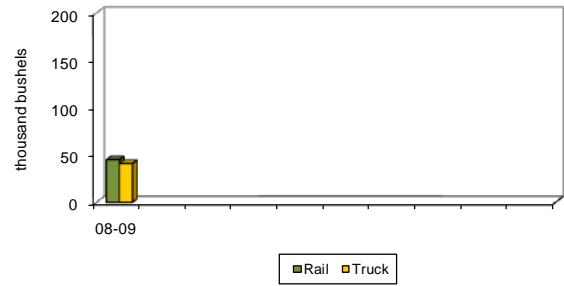
**NORTH DAKOTA DEPEAS SHIPMENTS
BY RAIL, TRUCK AND DESTINATION
thousand bu.**

YEAR	Minneapolis-St. Paul		Duluth-Superior		PNW		North Dakota		Other Minn. & Wisconsin		Midland & Gulf		Other		TOTAL	
	Rail	Truck	Rail	Truck	Rail	Truck	Rail	Truck	Rail	Truck	Rail	Truck	Rail	Truck	Rail	Truck
2008-09	341	26	45	41	2,700	19	149	527	318	37	2,107	199	2,794	372	8,455	1,220
	93%	7%	53%	47%	99%	1%	22%	78%	90%	10%	91%	9%	88%	12%	87%	13%

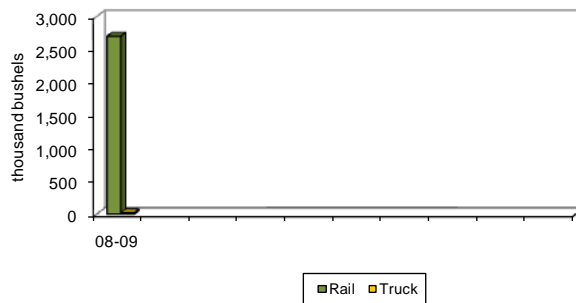
**DEPeas to Minneapolis-St. Paul
2008-09**



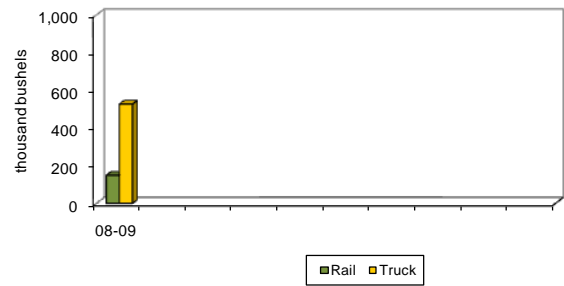
**DEPeas to Duluth-Superior
2008-09**



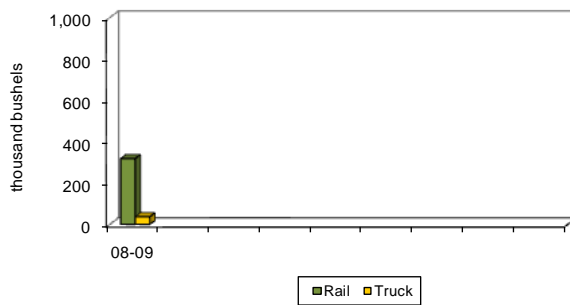
**DEPeas to PNW
2008-09**



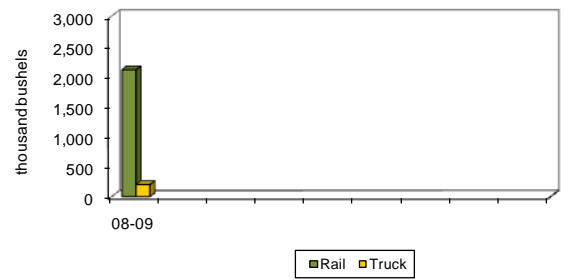
**DePeas to North Dakota
2008-09**



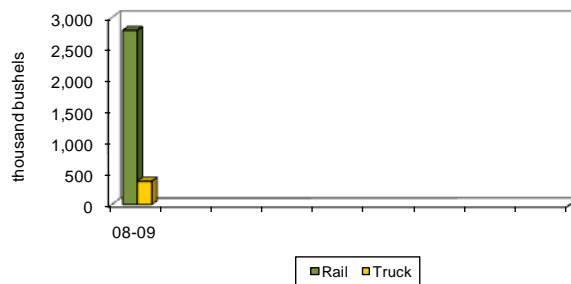
**DEPeas to Other Minnesota & Wisconsin
2008-09**



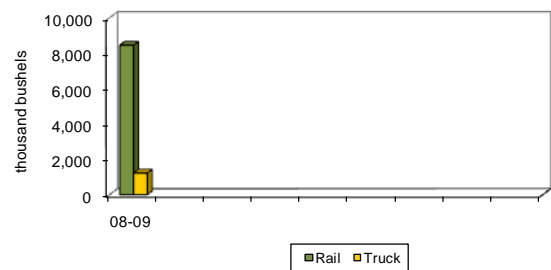
**DEPeas to Midland & Gulf
2008-09**



**DEPeas to Other Markets
2008-09**

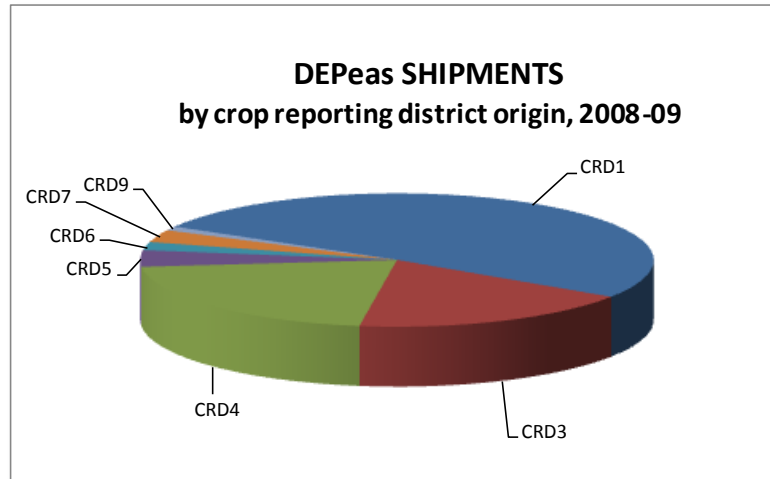


**Total DEPeas Shipments
2008-09**



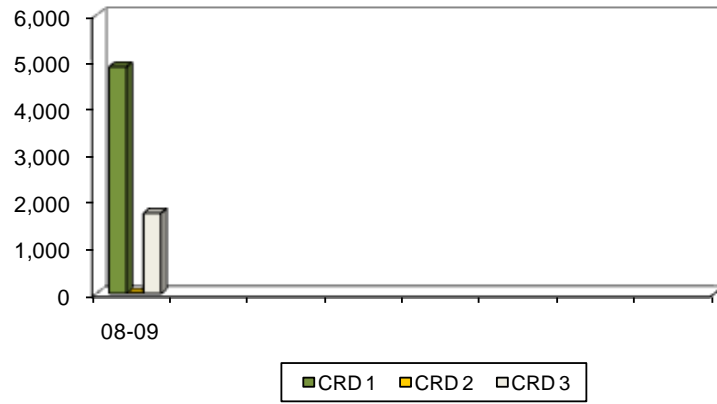
**NORTH DAKOTA DEPeas SHIPMENTS
BY CROP REPORTING DISTRICT
thousand bu.**

YEAR	Crop Reporting District									TOTAL
	1	2	3	4	5	6	7	8	9	
2008-09	4,888	5	1,733	2,010	364	229	322	0	125	9,675
	51%	0%	18%	21%	4%	2%	3%	0%	1%	100%

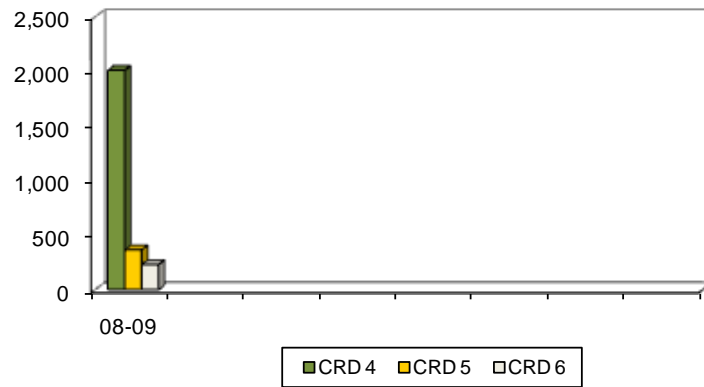


**DEPeas SHIPMENTS
BY CROP REPORTING DISTRICT
(Thousand Bushels)**

Northern Crop Reporting Districts



Central Crop Reporting Districts



Southern Crop Reporting Districts

