

NORTH DAKOTA GRAIN AND OILSEED TRANSPORTATION STATISTICS 2005-06



Kimberly Vachal
Advanced Research Fellow

Tamara VanWechel
Associate Research Fellow

Upper Great Plains Transportation Institute
North Dakota State University
Fargo, North Dakota



in cooperation with

North Dakota Wheat Commission
Bismarck, ND

North Dakota Public Service Commission
Bismarck, ND

With special thanks to the North Dakota grain elevator industry who provide these data monthly.

Preface

The 2005-06 North Dakota Grain and Oilseed Transportation Statistics Report was prepared by Kimberly Vachal and Tamara VanWechel, Upper Great Plains Transportation Institute. The authors gratefully acknowledge the desktop publishing assistance of Beverly Trittin in constructing this report.

This report represents a continuation of analysis concerned with the patterns and methods of distributing grains and oilseeds from North Dakota. This series began with the analysis of 1956-57 data and was published in Agricultural Economics Reports 15, 17, 44, 56, and 86 and Agricultural Experiment Station Bulletin 462. The compilation and analysis of data for the year 1967-68 in this series was assumed by the Upper Great Plains Transportation Institute. Also, the data representing the 1967-68 period were the first results of the requirements of the North Dakota Public Service Commission that all North Dakota elevators report monthly movements of grains and oilseeds by truck and rail. Prior to 1967-68, these data had been estimated from questionnaires completed by a sample of country elevators.

North Dakota State Wheat Commission

Harlan Klein, Vice Chair, District 1
Louis Kuster, District 2
David Clough, District 3
Fran Leiphon, Chair, District 4

Bruce Hagen, District 5
Brian O'Toole, District 6
James Burbidge, Commissioner-at-Large

Neal Fisher, Administrator
Jim Peterson, Marketing Director
Erica Peterson, Marketing Specialist
Sandra McMerty, Communications Director

www.ndwheat.com

North Dakota Public Service Commission

Commissioners:

Tony Clark, President
Susan Wefald
Kevin Cramer

Executive Secretary:

Illona Jeffcoat-Sacco

CONTENTS

North Dakota Grain and Oilseed Transportation Statistics	i
Objective of Report	i
Scope of Report	i
Source of Data	i
Organization of the Remainder of the Report	i
North Dakota Crop Reporting Districts and Counties.	ii
Total Grain and Oilseed Shipments	1
Hard Red Spring Wheat	11
Durum	19
Barley	27
Sunflower	35
Oats	43
Soybeans	51
Corn	59
Canola	67

NORTH DAKOTA GRAIN AND OILSEED TRANSPORTATION STATISTICS 2005-06

Objective of Report

This report represents a continuation of analysis concerned with the patterns and methods of distributing grain from North Dakota. The collection and compilation of this type of data began in 1956-57. The objectives of this report, like prior reports, are to provide the necessary database for identifying trends in the distribution of grain and oilseeds from North Dakota.

Scope of Report

Data are tabulated according to major characteristics which typically describe commodity flows. The major shipment characteristics considered are destination, mode, origin, time and commodity. These characteristics are defined as follows:

- **Destination:** Minneapolis-St. Paul, Duluth-Superior, Pacific Northwest (ID, OR, WA), Other Minnesota/Wisconsin, Midland & Gulf states (AR, AZ, CA, CO, IA, KS, LA, MO, MT, NE, NM, NV, OK, SD, TX, and WY), North Dakota and other destinations.
- **Mode:** Rail or truck. Rail includes Commodity Credit Corporation shipments.
- **Origin:** The nine crop reporting districts in North Dakota (Figure 1).
- **Time:** By month, from July 2005 to June 2006, and previous years.
- **Commodity:** Hard red spring wheat, durum, barley, sunflower, oats, soybeans, corn, and canola.

Source of Data

The data used to analyze North Dakota grain distribution patterns for the period July 2005 through June 2006 were obtained from all country elevators in North Dakota. The data source is the North Dakota Public Service Commission's "Grain Movement Report." Every country elevator in North Dakota is required under state statute to assemble and submit a "Grain Movement Report" to the Public Service Commission on a monthly basis.

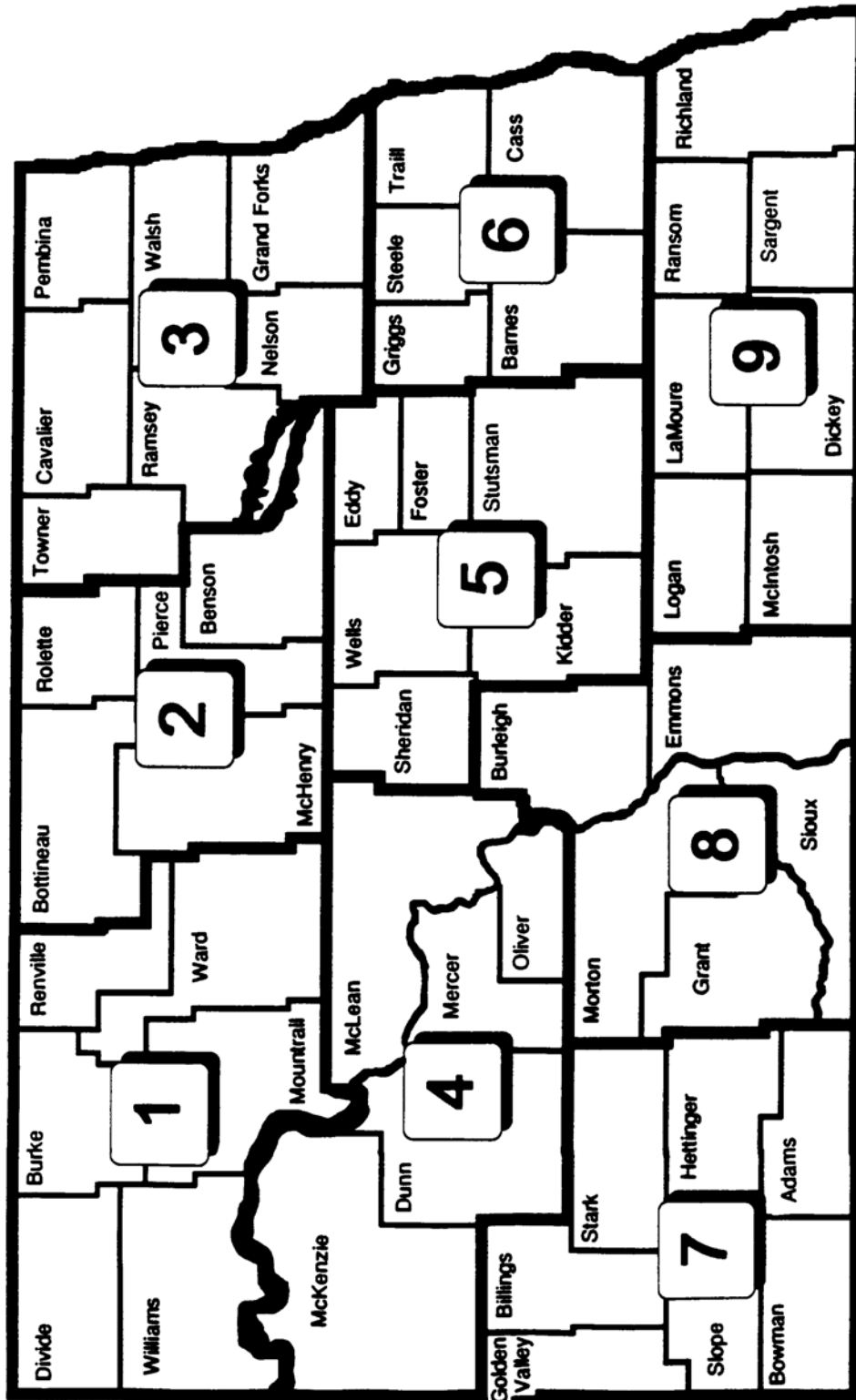
Organization of the Remainder of the Report

The same general commodity flow characteristics are considered in this report as in previous years' reports. Flow patterns for each type of grain are described in separate sections in the following order:

(1) Total Grain and Oilseed Shipments, (2) Hard Red Spring Wheat, (3) Durum, (4) Barley, (5) Sunflower, (6) Oats, (7) Soybeans, (8) Corn, and (9) Canola.

Some small inconsistencies in totals may be noted when comparing tables and graphs due to rounding error.

2005-06 totals are preliminary, representing 99 percent of the required reports.



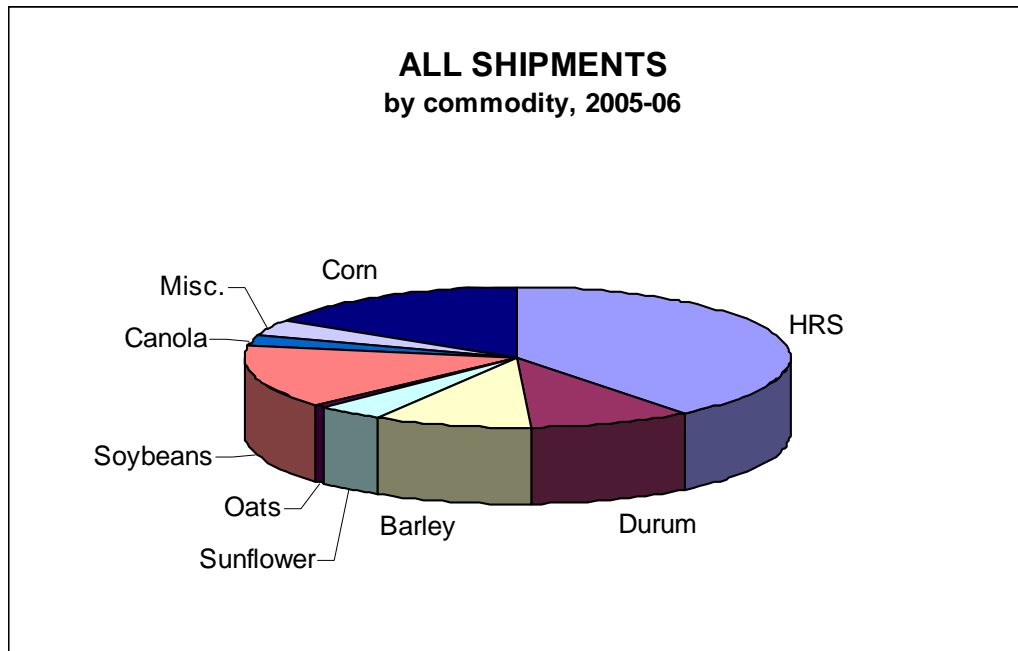
North Dakota Crop Reporting Districts and Counties



TOTAL GRAIN & OILSEED

NORTH DAKOTA GRAIN AND OILSEED SHIPMENTS
1997-98 to 2005-06
 thousand bu.

YEAR	HRS	Durum	Barley	Sunflower	Oats	Soybeans	Canola	Misc.	Corn	TOTAL
1997-98	179,327 39%	57,551 12%	94,006 20	49,803 11%	3,128 1%	25,223 5%	11,870 3%	14,047 3%	28,643 6%	463,598 100%
1998-99	168,660 35%	55,423 12%	91,037 19%	52,590 11%	2,273 1%	29,542 6%	23,913 5%	20,020 4%	35,886 8%	479,344 100%
1999-00	177,450 38%	64,056 14%	74,142 16%	42,052 9%	5,034 1%	42,668 9%	14,026 3%	15,830 3%	38,525 8%	473,782 100%
2000-01	200,068 37%	77,025 14%	84,531 16%	38,194 7%	4,031 1%	49,617 9%	20,468 3%	17,958 4%	51,130 9%	543,021 100%
2001-02	197,644 39%	61,242 12%	68,655 13%	32,042 6%	6,314 1%	61,228 12%	18,527 4%	18,202 4%	46,827 9%	510,681 100%
2002-03	193,462 38%	45,327 9%	61,485 12%	32,708 6%	3,655 1%	82,784 16%	18,340 4%	16,900 3%	60,147 12%	514,809 100%
2003-04	243,408 39%	53,946 9%	80,768 13%	38,830 6%	5,487 1%	87,260 14%	18,075 3%	9,783 2%	73,981 12%	620,951 100%
2004-05	253,110 47%	45,518 9%	64,569 12%	19,470 4%	5,817 1%	66,732 12%	13,505 3%	12,875 2%	56,821 11%	538,417 100%
2005-06	232,312 39%	57,993 10%	54,745 9%	22,850 4%	5,925 1%	82,575 14%	16,066 3%	22,866 4%	94,619 16%	589,950 100%

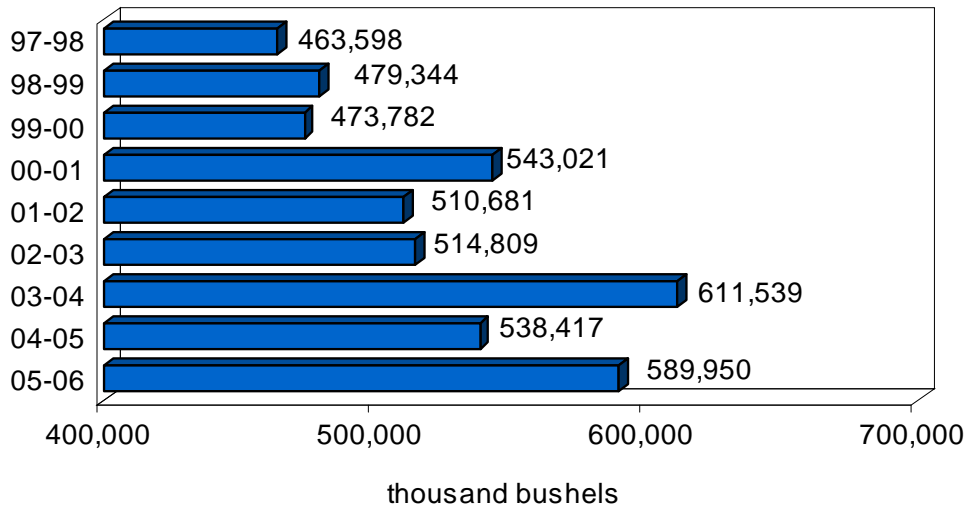


**NORTH DAKOTA GRAIN AND OILSEED SHIPMENTS
BY DESTINATION
1997-98 to 2005-06
thousand bu.**

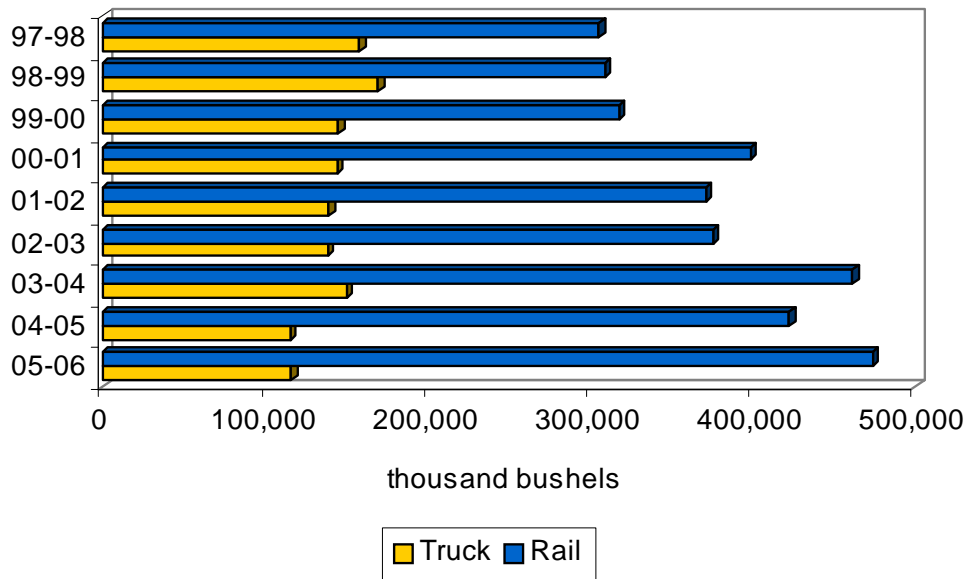
YEAR	Minneapolis- St. Paul	Duluth- Superior	PNW	North Dakota	Other Minn. & Wisconsin	Midland & Gulf	Other	TOTAL
1997-98	114,780 25%	65,592 14%	62,221 13%	90,197 19%	25,472 6%	40,654 9%	64,691 14%	463,598 100%
1998-99	131,491 28%	60,465 13%	42,496 9%	104,833 21%	27,054 6%	35,699 8%	77,331 16%	479,344 100%
1999-00	120,779 25%	68,330 14%	47,327 10%	89,052 19%	24,628 5%	39,695 8%	83,975 18%	473,782 100%
2000-01	130,574 24%	57,280 11%	70,930 13%	93,763 17%	31,870 6%	60,258 11%	98,341 18%	543,021 100%
2001-02	117,409 23%	54,036 11%	80,732 16%	86,026 17%	33,349 7%	41,638 8%	97,505 19%	510,681 100%
2002-03	113,050 22%	52,384 10%	71,270 14%	91,994 18%	41,515 8%	43,606 9%	100,979 20%	514,809 100%
2003-04	149,831 25%	48,693 8%	116,580 19%	97,823 16%	59,332 10%	47,612 8%	91,691 15%	611,539 100%
2004-05	131,520 24%	45,434 8%	103,189 19%	82,805 15%	36,832 7%	46,273 9%	92,306 17%	538,417 100%
2005-06*	111,197 19%	51,261 9%	142,628 24%	87,849 15%	42,826 7%	48,845 8%	105,356 18%	589,950 100%

*Results are preliminary.

ALL COMMODITY SHIPMENTS 1997-98 TO 2005-06



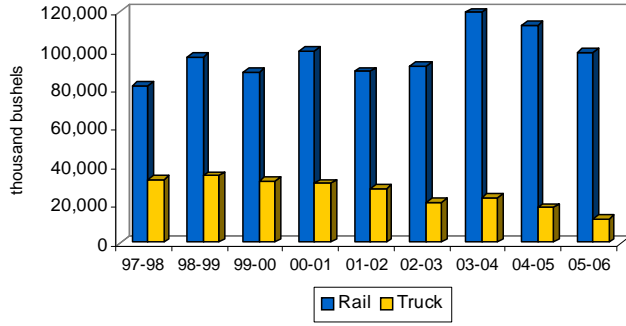
ALL COMMODITY SHIPMENTS 1997-98 TO 2005-06



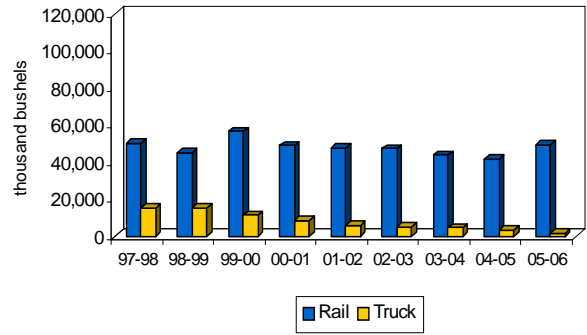
**NORTH DAKOTA GRAIN AND OILSEED SHIPMENTS
BY RAIL, TRUCK AND DESTINATION
thousand bu.**

YEAR	Minneapolis-St. Paul		Duluth-Superior		PNW		North Dakota		Other Minn. & Wisconsin		Midland & Gulf		Other		TOTAL	
	Rail	Truck	Rail	Truck	Rail	Truck	Rail	Truck	Rail	Truck	Rail	Truck	Rail	Truck	Rail	Truck
1997-98	81,807	32,973	50,068	15,524	59,723	2,497	13,070	77,127	14,514	10,958	35,713	4,941	50,448	14,243	305,341	158,258
	71%	29%	76%	24%	96%	4%	14%	86%	57%	43%	88%	12%	78%	22%	66%	34%
1998-99	96,721	34,771	45,224	15,241	40,702	1,794	20,159	84,674	15,672	11,382	31,186	4,513	59,476	17,855	309,137	170,206
	74%	26%	75%	25%	96%	4%	19%	81%	58%	42%	87%	13%	77%	23%	64%	36%
1999-00	88,522	32,257	56,703	11,626	45,692	1,635	19,002	70,050	14,795	9,832	36,440	3,255	65,212	18,763	326,368	147,414
	73%	27%	83%	17%	97%	3%	21%	79%	60%	40%	92%	8%	78%	22%	69%	31%
2000-01	99,799	30,796	48,947	8,332	69,382	1,547	21,243	72,520	21,332	10,538	56,196	4,062	81,804	16,537	398,681	144,340
	76%	24%	85%	15%	98%	2%	23%	77%	67%	33%	93%	7%	83%	17%	73%	27%
2001-02	89,147	28,262	48	6,128	79,219	1,513	20,034	65,992	20,922	12,427	38,287	3,351	76,005	21,501	371,521	139,160
	76%	24%	89%	11%	98%	2%	23%	77%	63%	37%	92%	8%	78%	22%	73%	27%
2002-03	91,788	21,262	47,227	5,157	69,511	1,759	25,627	66,367	26,846	14,669	39,847	3,758	74,901	26,079	375,747	139,062
	81%	19%	90%	10%	98%	2%	28%	72%	65%	35%	91%	9%	74%	26%	73%	27%
2003-04	126,476	23,355	43,914	4,779	114,919	1,661	20,144	77,679	45,619	13,713	44,630	2,982	65,708	25,983	461,407	150,131
	84%	16%	90%	10%	99%	1%	21%	79%	77%	23%	94%	6%	72%	28%	75%	25%
2004-05	113,330	18,290	41,719	3,715	102,656	533	19,249	63,556	26,942	9,889	43,159	3,103	75,454	16,852	422,509	115,908
	86%	14%	92%	8%	99%	1%	23%	77%	73%	27%	93%	7%	82%	18%	78%	22%
2005-06	98,867	12,330	49,541	1,720	141,600	1,028	18,193	69,656	35,404	7,422	45,655	3,190	84,350	21,005	473,610	116,340
	89%	11%	97%	3%	99%	1%	21%	79%	83%	17%	93%	7%	80%	20%	80%	20%

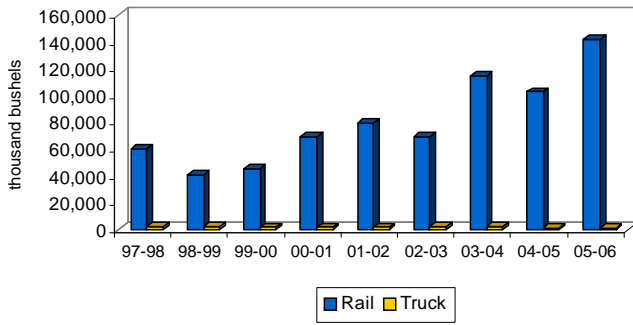
**All Shipments to Minneapolis-St. Paul
1997-98 to 2005-06**



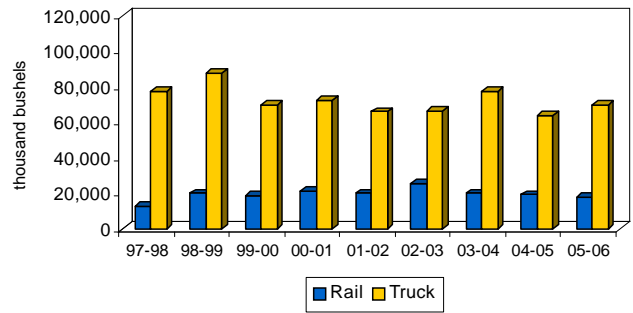
**All Shipments to Duluth-Superior
1997-98 to 2005-06**



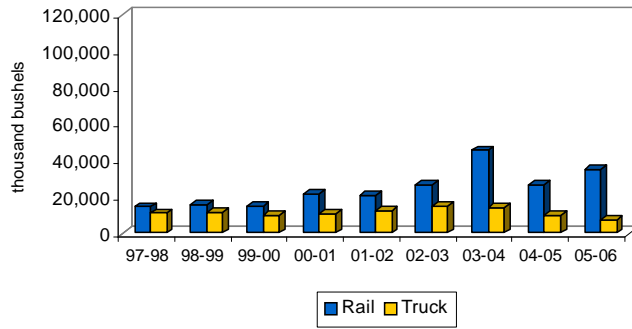
**All Shipments to PNW
1997-98 to 2005-06**



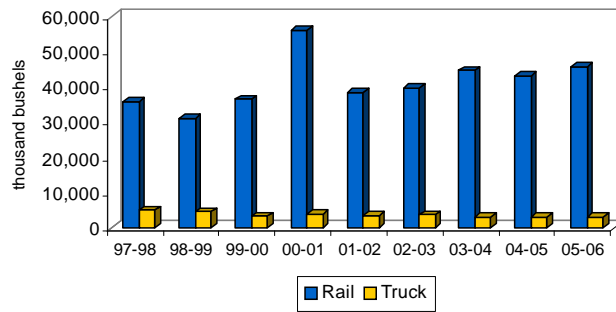
**All Shipments to North Dakota
1997-98 to 2005-06**



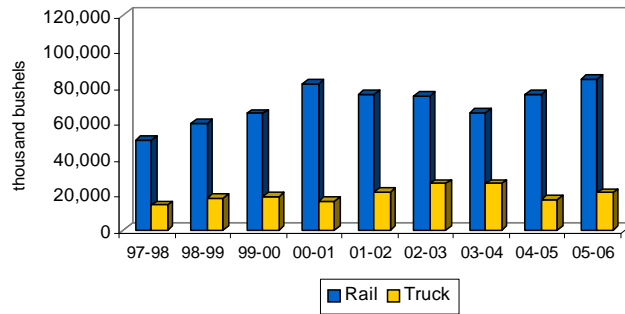
**All Shipments to Other Minnesota & Wisconsin
1997-98 to 2005-06**



**All Shipments to Midland & Gulf
1997-98 to 2005-06**



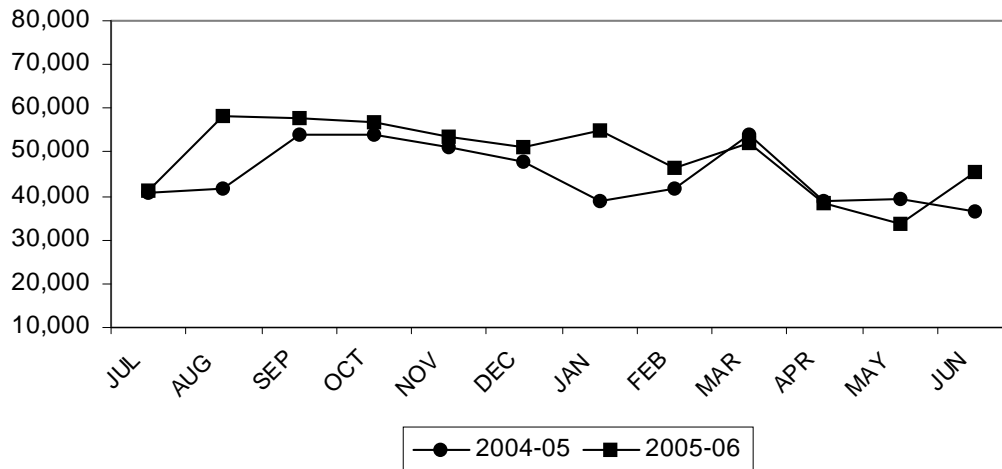
**All Shipments to Other Markets
1997-98 to 2005-06**



**NORTH DAKOTA GRAIN AND OILSEED MOVEMENTS
BY MONTH
July 2005- June 2006
thousand bu.**

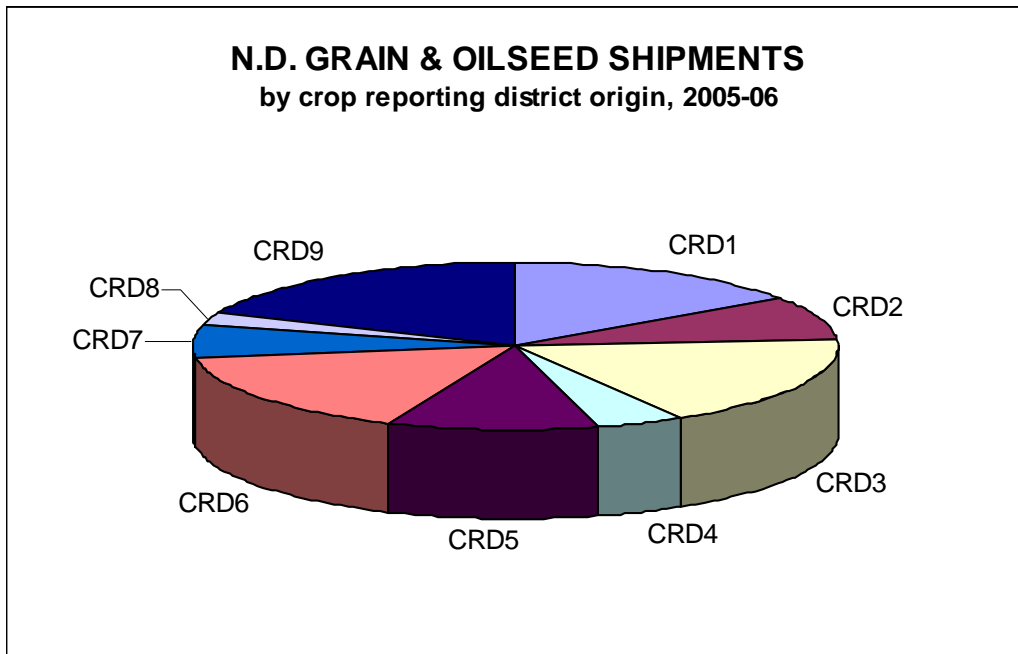
MONTH	HRS	Durum	Soybeans	Canola	Barley	Oats	Corn	SF	Misc.	TOTAL
July	17,089	4,780	2,535	693	6,727	607	6,885	1,255	491	41,062
August	27,520	6,103	1,927	2,275	8,499	848	5,528	857	4,800	58,358
September	27,792	6,325	2,069	3,679	5,753	426	5,079	831	6,986	57,940
October	15,814	4,225	18,882	1,585	3,904	53	6,022	4,059	2,435	56,979
November	19,165	4,640	10,826	1,209	3,117	573	9,895	2,878	1,161	53,454
December	21,960	4,394	7,399	1,099	4,332	574	7,960	2,554	1,025	51,297
January	21,198	5,080	9,194	1,185	4,497	589	10,226	2,261	897	55,126
February	16,637	4,594	9,640	1,590	4,827	450	6,250	1,541	796	46,324
March	17,880	6,120	8,464	1,225	5,292	148	9,840	1,758	1,287	52,013
April	16,021	4,685	3,870	457	3,051	382	7,683	1,310	839	38,297
May	13,148	3,192	2,134	372	1,951	588	9,659	1,662	760	33,468
June	18,099	3,855	5,634	697	2,795	687	10,592	1,884	1,389	45,631
TOTAL	232,312	57,993	82,575	16,066	54,745	5,925	94,619	22,850	22,866	589,950

ALL COMMODITY SHIPMENTS
by month, 2004-05 and 2005-06
(thousand bushels)



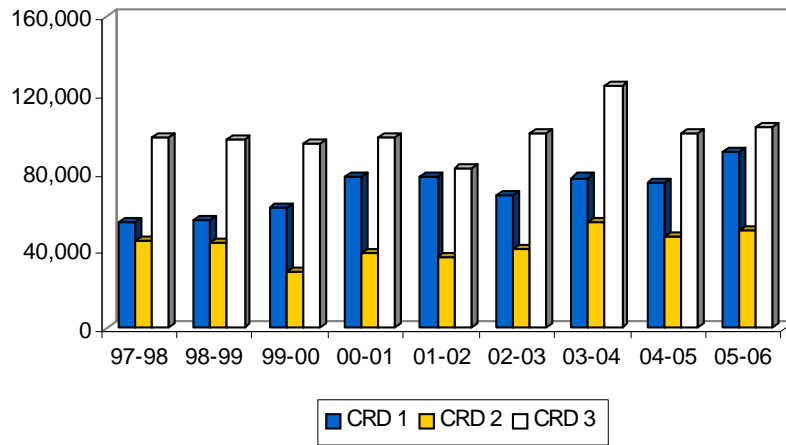
**NORTH DAKOTA GRAIN AND OILSEED SHIPMENTS
BY CROP REPORTING DISTRICT ORIGIN
1997-98 to 2005-06
thousand bu.**

YEAR	Crop Reporting District									TOTAL
	1	2	3	4	5	6	7	8	9	
1997-98	54,286	45,227	97,849	17,490	45,499	85,360	27,729	10,693	79,465	463,598
	12%	10%	21%	4%	10%	18%	6%	2%	17%	100%
1998-99	56,003	43,492	96,776	19,122	46,479	99,992	3,398	13,343	73,747	479,344
	12%	9%	20%	4%	9%	21%	6%	3%	16%	100%
1999-00	62,431	29,332	94,536	16,651	49,766	97,160	27,361	13,836	82,709	473,782
	13%	6%	20%	4%	11%	21%	6%	3%	17%	100%
2000-01	77,929	38,650	97,863	21,862	53,679	102,971	37,524	17,997	94,546	543,021
	14%	7%	18%	4%	10%	19%	7%	3%	17%	100%
2001-02	77,429	36,796	82,051	18,929	51,124	97,291	36,885	16,224	93,952	510,681
	15%	7%	16%	4%	10%	19%	7%	3%	18%	100%
2002-03	68,110	40,328	100,077	17,184	51,038	118,535	24,166	10,844	84,527	514,809
	13%	8%	19%	3%	10%	23%	5%	2%	17%	100%
2003-04	77,302	54,678	124,721	20,427	60,553	138,672	33,339	15,518	86,330	611,539
	13%	9%	20%	3%	10%	23%	5%	3%	14%	100%
2004-05	74,688	47,939	100,271	22,667	59,276	81,537	35,569	14,535	102,480	538,417
	14%	9%	19%	4%	11%	15%	7%	3%	19%	100%
2005-06	90,938	50,422	103,262	25,128	63,413	96,251	37,210	13,714	109,613	589,950
	15%	9%	18%	4%	11%	16%	6%	2%	19%	100%

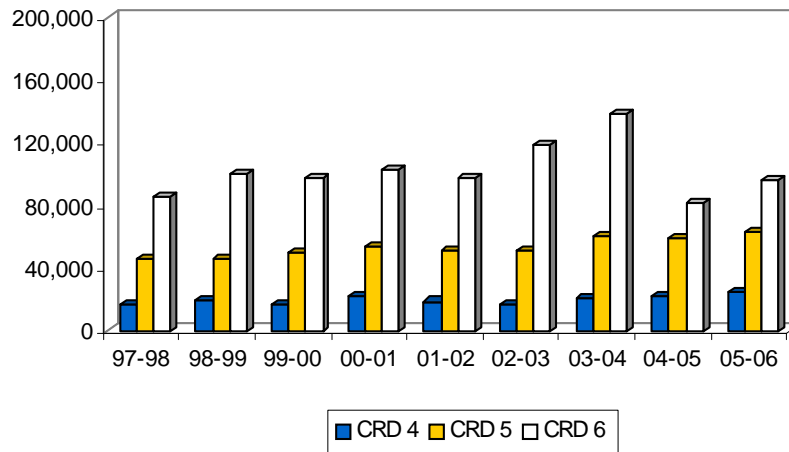


**ALL GRAIN AND OILSEED SHIPMENTS BY
CROP REPORTING DISTRICT
(thousand bushels)**

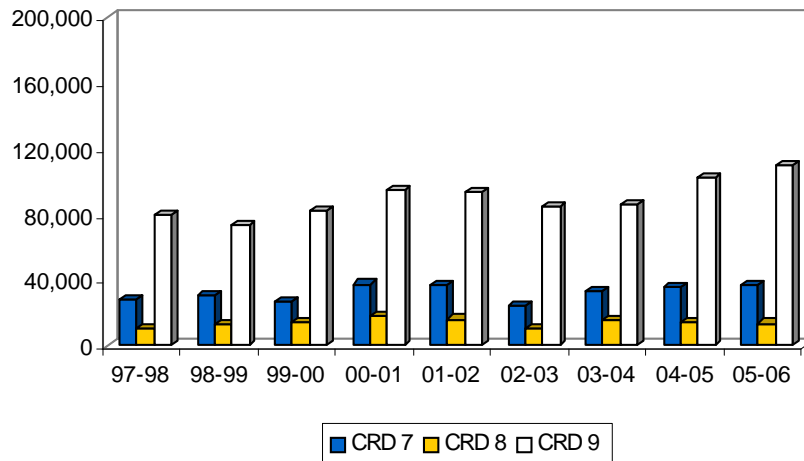
Northern Crop Reporting Districts



Central Crop Reporting Districts



Southern Crop Reporting Districts





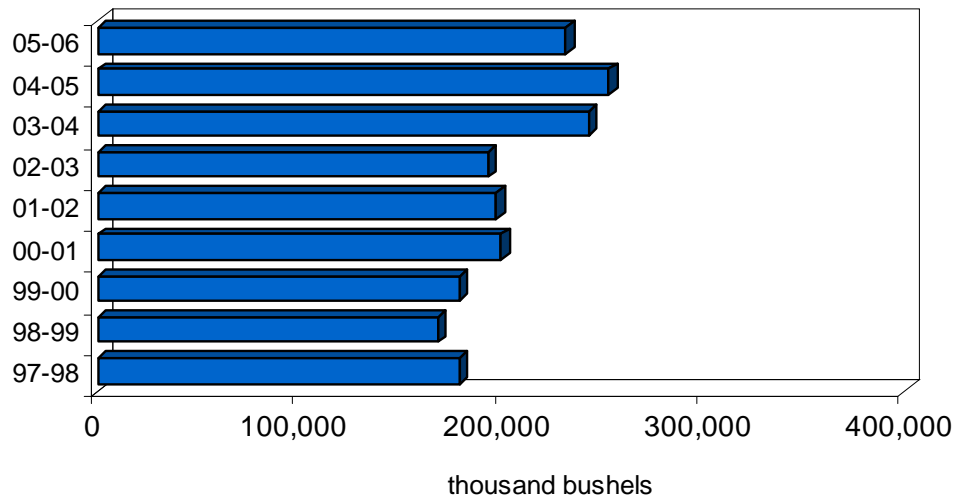
HARD RED SPRING WHEAT

**NORTH DAKOTA HARD RED SPRING WHEAT SHIPMENTS
BY DESTINATION
thousand bu.**

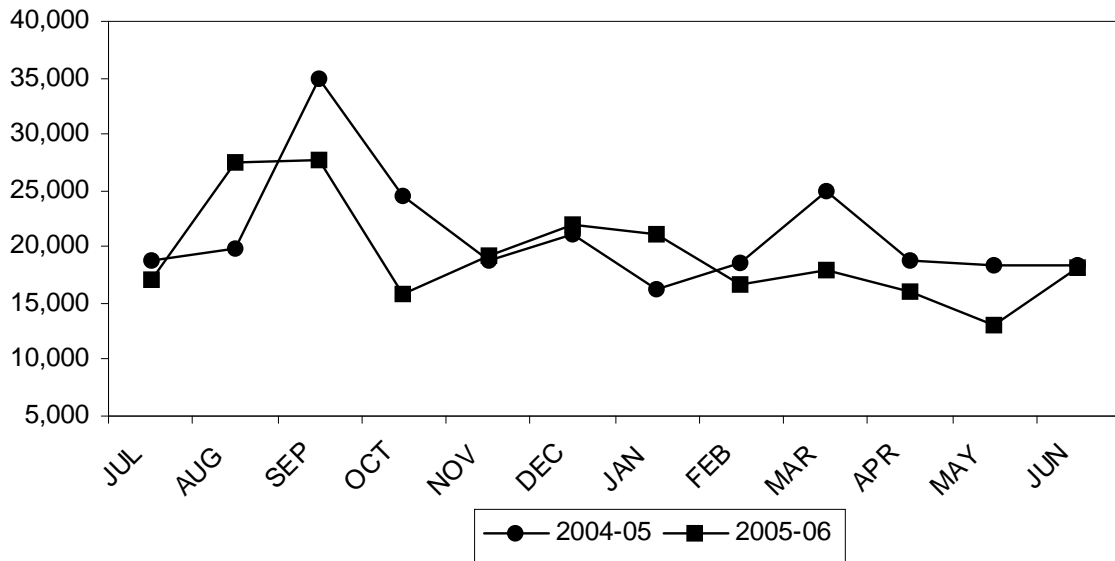
YEAR	Minneapolis- St. Paul	Duluth- Superior	PNW	North Dakota	Other Minn. & Wisconsin	Midland & Gulf	Other	TOTAL
1997-98	54,824	32,140	32,646	10,182	6,173	18,040	25,321	179,327
	31%	18%	18%	6%	3%	10%	14%	100%
1998-99	57,634	24,350	23,937	10,516	7,596	13,737	30,890	168,660
	34%	14%	14%	6%	5%	8%	18%	100%
1999-00	52,041	29,068	23,644	11,383	6,139	15,809	39,367	177,450
	29%	16%	13%	6%	3%	9%	22%	100%
2000-01	64,860	24,403	29,848	10,522	7,005	24,447	38,983	200,068
	32%	12%	15%	5%	4%	12%	19%	100%
2001-02	59,885	19,413	46,505	13,858	8,209	19,692	30,083	197,644
	30%	10%	24%	7%	4%	10%	15%	100%
2002-03	64,501	26,006	30,210	14,133	8,682	22,744	27,187	193,462
	33%	13%	16%	7%	4%	12%	14%	100%
2003-04	86,989	25,000	39,511	16,025	16,757	24,017	35,108	243,408
	36%	10%	16%	7%	7%	10%	14%	100%
2004-05	83,576	31,369	47,226	16,854	11,683	23,462	38,939	253,110
	33%	12%	19%	7%	5%	9%	15%	100%
2005-06*	65,656	27,038	38,732	15,279	11,573	27,482	46,551	232,312
	28%	12%	17%	7%	5%	12%	20%	100%

*Results are preliminary.

HRS WHEAT SHIPMENTS 1997-98 to 2005-06



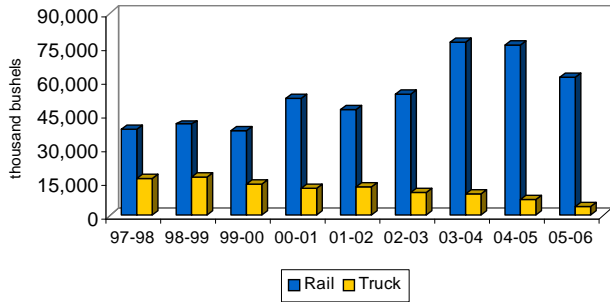
HRS WHEAT SHIPMENTS by month, 2004-05 to 2005-06 (thousand bushels)



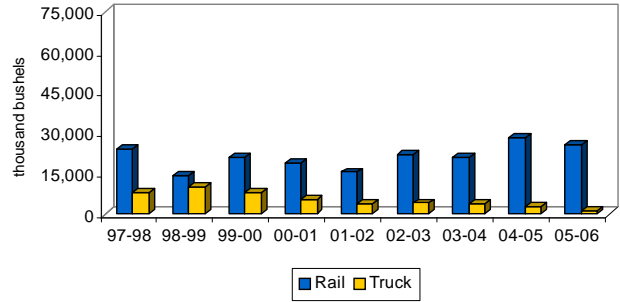
**NORTH DAKOTA HARD RED SPRING WHEAT SHIPMENTS
BY RAIL, TRUCK AND DESTINATION
thousand bu.**

YEAR	Minneapolis-St. Paul		Duluth-Superior		PNW		North Dakota		Other Minn. & Wisconsin		Midland & Gulf		Other		TOTAL	
	Rail	Truck	Rail	Truck	Rail	Truck	Rail	Truck	Rail	Truck	Rail	Truck	Rail	Truck	Rail	Truck
1997-98	38,332	16,493	24,058	8,082	30,778	1,868	2,009	8,174	4,046	2,127	16,489	1,552	23,392	1,929	139,103	40,224
	70%	30%	75%	25%	94%	6%	20%	80%	66%	34%	91%	9%	92%	8%	78%	22%
1998-99	40,586	17,048	14,156	10,194	22,917	1,020	1,218	9,298	5,212	2,384	12,941	796	29,564	1,326	126,595	42,065
	70%	30%	58%	42%	96%	4%	12%	88%	69%	31%	94%	6%	96%	4%	75%	25%
1999-00	37,966	14,075	21,197	7,871	22,782	862	2,517	8,866	4,365	1,774	15,465	345	37,039	2,329	141,329	36,121
	73%	27%	73%	27%	96%	4%	22%	78%	71%	29%	98%	2%	94%	6%	80%	20%
2000-01	52,472	12,388	18,929	5,474	29,210	638	1,710	8,812	4,926	2,079	23,928	518	37,703	1,281	168,878	31,190
	81%	19%	78%	22%	98%	2%	16%	84%	70%	30%	98%	2%	97%	3%	84%	16%
2001-02	47,284	12,601	15,561	3,852	45,728	777	1,878	11,980	4,807	3,402	19,018	674	28,599	1,483	162,875	34,769
	79%	21%	80%	20%	98%	2%	14%	86%	59%	41%	97%	3%	95%	5%	82%	18%
2002-03	54,187	10,314	21,927	4,079	29,517	693	3,267	10,866	5,049	3,632	22,130	614	25,908	1,280	161,984	31,478
	84%	16%	84%	16%	98%	2%	23%	77%	58%	42%	97%	3%	95%	5%	84%	16%
2003-04	77,139	9,850	21,022	3,948	39,100	411	2,912	13,113	13,682	3,075	22,671	1,346	30,918	4,190	207,446	35,962
	89%	11%	84%	16%	99%	1%	18%	82%	82%	18%	94%	6%	88%	12%	85%	15%
2004-05	76,224	7,353	28,350	3,018	47,062	165	4,743	12,111	10,316	1,368	21,999	1,463	36,255	2,684	224,949	28,161
	91%	9%	90%	10%	100%	0%	28%	72%	88%	12%	94%	6%	93%	7%	89%	11%
2005-06	61,727	3,929	25,973	1,065	38,302	431	3,719	11,560	10,547	1,026	26,042	1,440	42,434	4,117	208,744	23,568
	94%	6%	96%	4%	99%	1%	24%	76%	91%	9%	95%	5%	91%	9%	90%	10%

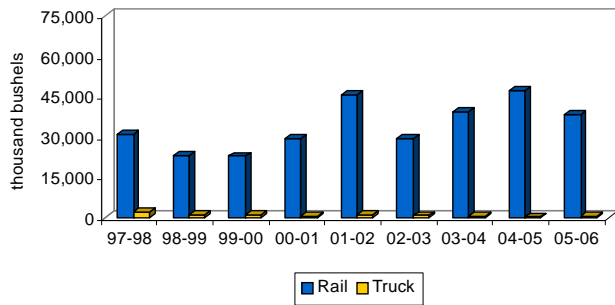
HRS Wheat to Minneapolis-St. Paul
1997-98 to 2005-06



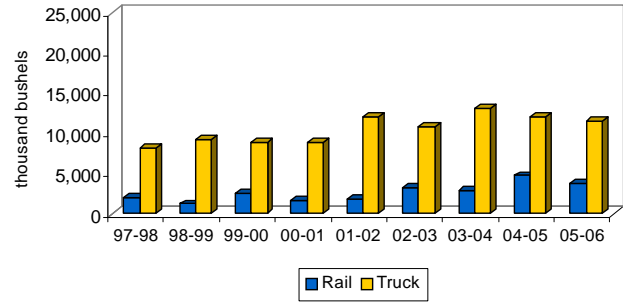
HRS Wheat to Duluth-Superior
1997-98 to 2005-06



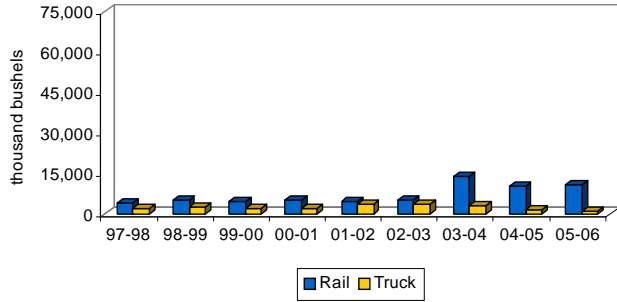
HRS Wheat to PNW
1997-98 to 2005-06



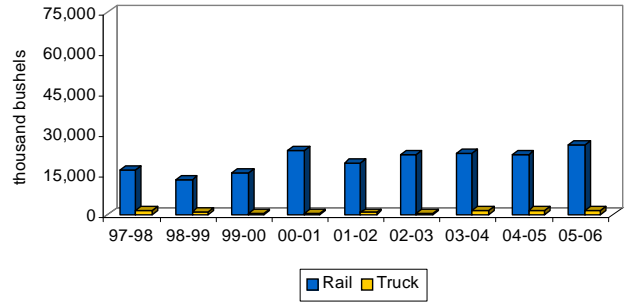
HRS Wheat to North Dakota
1997-98 to 2005-06



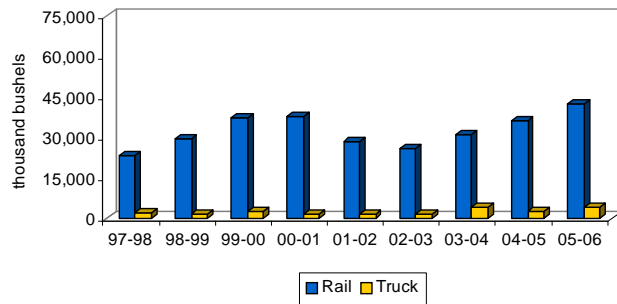
HRS Wheat to Other Minnesota & Wisconsin
1997-98 to 2005-06



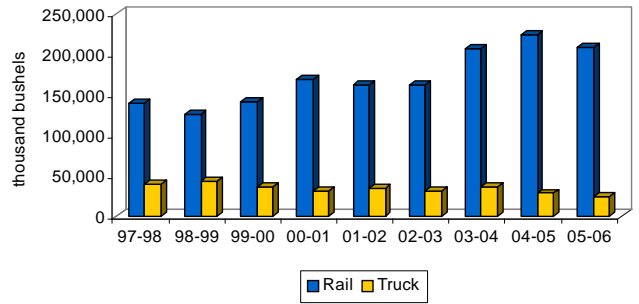
HRS Wheat to Midland & Gulf
1997-98 to 2005-06



HRS Wheat to Other Markets
1997-98 to 2005-06

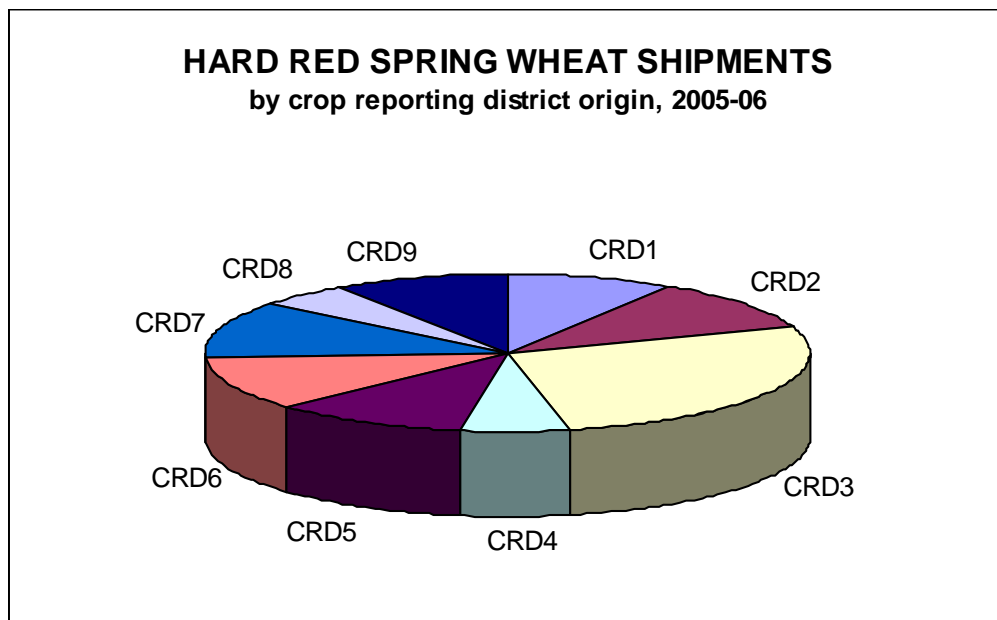


Total HRS Wheat Shipments
1997-98 to 2005-06



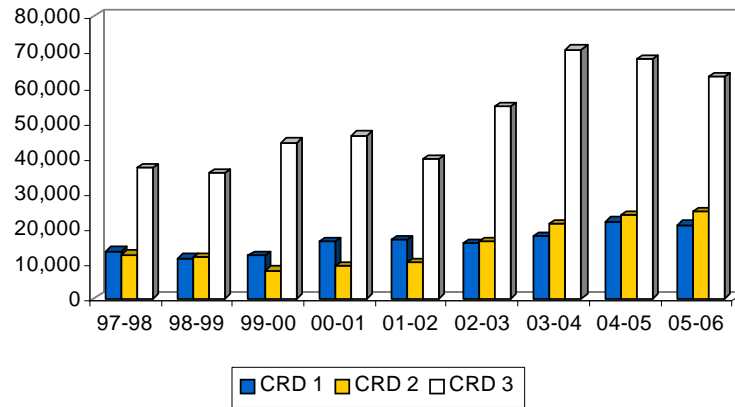
**NORTH DAKOTA HARD RED SPRING WHEAT SHIPMENTS
BY CROP REPORTING DISTRICT ORIGIN
thousand bu.**

YEAR	Crop Reporting District									TOTAL
	1	2	3	4	5	6	7	8	9	
1997-98	13,702	12,487	37,081	7,719	18,775	26,859	23,779	9,598	29,328	179,327
	8%	7%	21%	4%	10%	15%	13%	5%	16%	100%
1998-99	11,384	11,603	35,393	6,594	16,588	29,389	23,897	10,145	23,668	168,660
	7%	7%	21%	4%	10%	17%	14%	6%	14%	100%
1999-00	12,268	7,977	44,229	6,636	22,078	29,400	21,192	10,289	23,381	174,500
	7%	4%	25%	4%	12%	17%	12%	6%	13%	100%
2000-01	16,171	9,090	46,282	6,301	22,214	33,091	27,822	12,822	26,276	200,068
	8%	5%	23%	3%	11%	17%	14%	6%	13%	100%
2001-02	16,831	10,186	39,364	6,716	23,571	35,475	27,684	11,689	26,128	197,644
	9%	5%	20%	3%	12%	18%	14%	6%	13%	100%
2002-03	15,740	16,063	54,305	7,501	20,395	32,793	17,940	8,530	20,196	193,462
	8%	8%	28%	4%	11%	17%	9%	4%	10%	100%
2003-04	17,820	20,998	70,521	9,017	24,206	38,292	24,874	12,047	25,632	243,408
	7%	9%	29%	4%	10%	16%	10%	5%	11%	100%
2004-05	21,945	23,765	67,782	11,786	30,261	28,650	27,393	12,522	29,007	253,110
	9%	9%	27%	5%	12%	11%	11%	5%	11%	100%
2005-06	20,892	24,767	62,748	13,511	24,392	25,117	27,312	11,666	21,907	232,312
	9%	11%	27%	6%	10%	11%	12%	5%	9%	100%

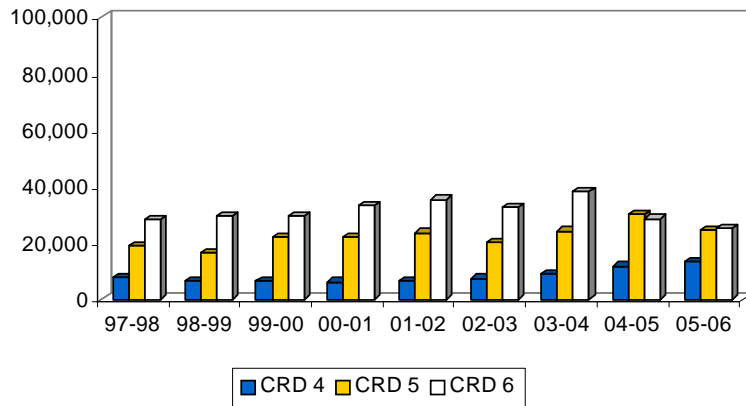


**HARD RED SPRING WHEAT SHIPMENTS
BY CROP REPORTING DISTRICT
(Thousand Bushels)**

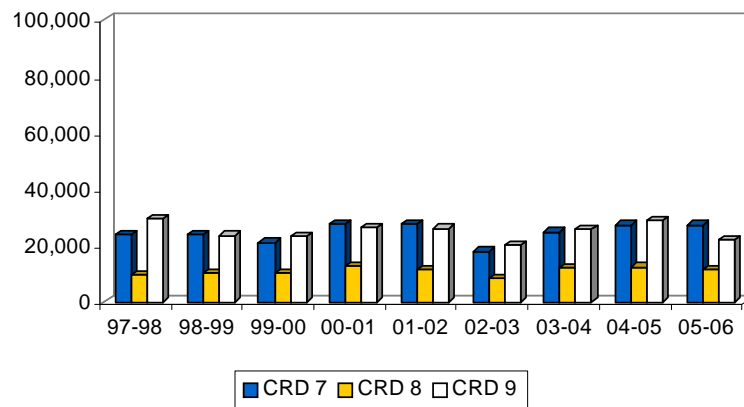
Northern Crop Reporting Districts



Central Crop Reporting Districts



Southern Crop Reporting Districts





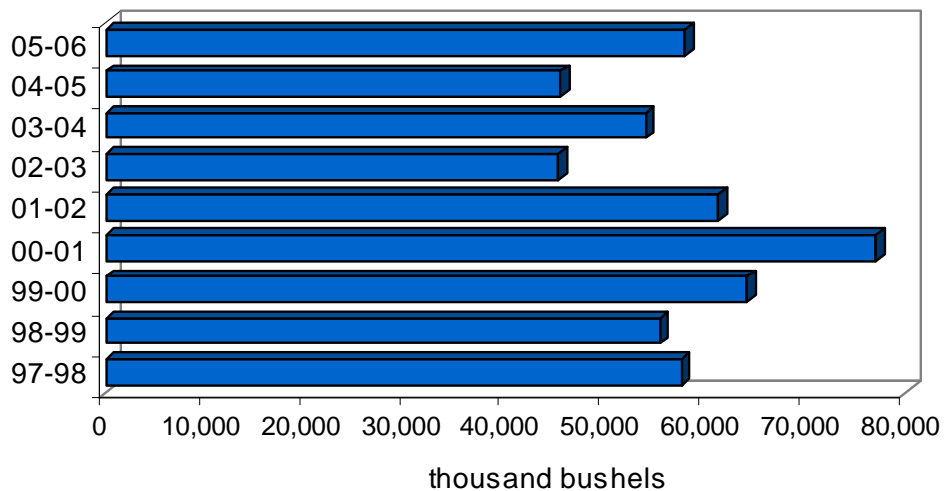
DURUM

**NORTH DAKOTA DURUM SHIPMENTS
BY DESTINATION
thousand bu.**

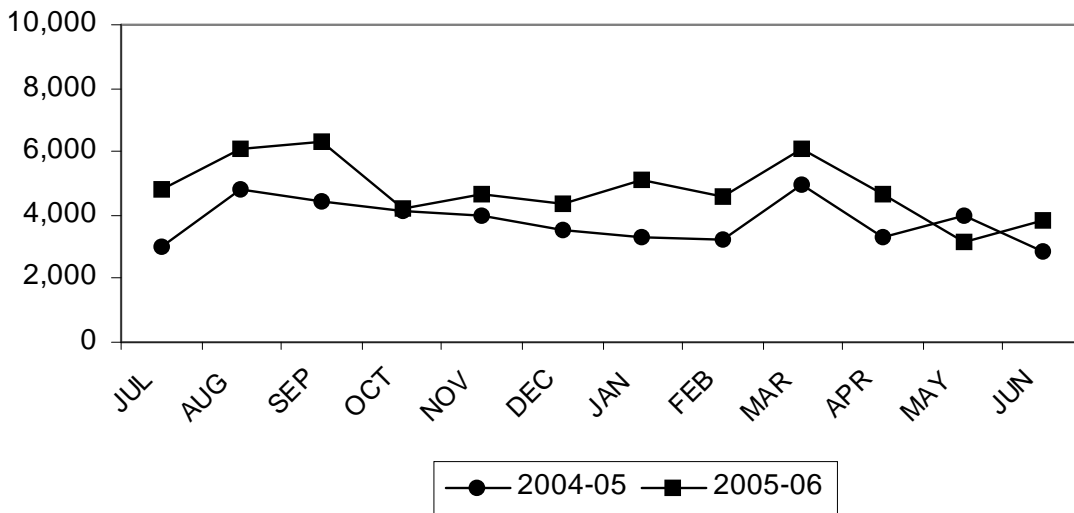
YEAR	Minneapolis- St. Paul	Duluth- Superior	PNW	North Dakota	Other Minn. & Wisconsin	Midland & Gulf	Other	TOTAL
1997-98	18,496	9,091	217	9,530	4,154	8,728	7,334	57,551
	32%	16%	0%	17%	7%	15%	13%	100%
1998-99	22,552	4,876	608	11,208	3,468	6,229	6,483	55,423
	41%	9%	1%	20%	6%	11%	12%	100%
1999-00	21,987	8,569	676	11,966	3,695	407	7,756	64,056
	34%	13%	1%	19%	6%	15%	12%	100%
2000-01	21,369	10,297	2,134	12,396	7,526	13,781	9,521	77,025
	28%	13%	3%	16%	10%	18%	12%	100%
2001-02	16,042	15,311	1,469	12,451	5,758	5,745	4,465	61,242
	26%	25%	2%	20%	9%	9%	7%	100%
2002-03	11,640	7,990	365	10,876	4,461	7,773	2,222	45,327
	26%	18%	1%	24%	10%	17%	5%	100%
2003-04	14,871	8,935	800	7,986	5,707	12,376	3,271	53,946
	28%	17%	1%	15%	11%	23%	6%	100%
2004-05	12,507	6,476	176	8,337	4,473	10,038	3,510	45,518
	27%	14%	0%	18%	10%	22%	8%	100%
2005-06*	14,183	13,172	528	7,552	8,557	10,089	3,912	57,993
	24%	23%	1%	13%	15%	17%	7%	100%

* Results are preliminary.

DURUM SHIPMENTS 1997-98 to 2005-06



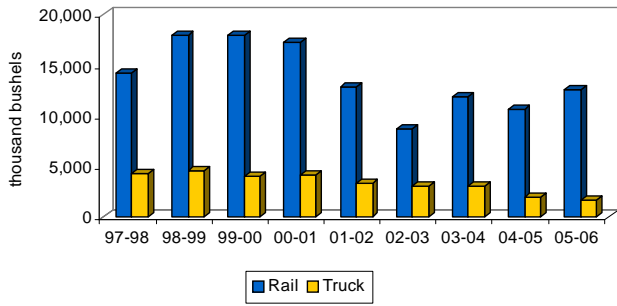
DURUM SHIPMENTS by month, 2004-05 to 2005-06 (thousand bushels)



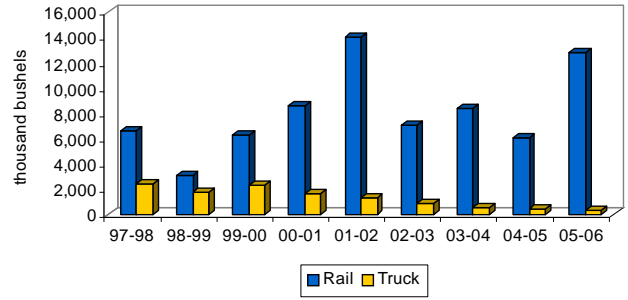
**NORTH DAKOTA DURUM SHIPMENTS
BY RAIL, TRUCK AND DESTINATION
thousand bu.**

YEAR	Minneapolis-St. Paul		Duluth-Superior		PNW		North Dakota		Other Minn. & Wisconsin		Midland & Gulf		Other		TOTAL	
	Rail	Truck	Rail	Truck	Rail	Truck	Rail	Truck	Rail	Truck	Rail	Truck	Rail	Truck	Rail	Truck
1997-98	14,284	4,212	6,658	2,433	214	3	5,833	3,697	3,527	627	8,595	132	7,189	146	46,300	11,250
	77%	23%	73%	27%	99%	1%	61%	39%	85%	15%	98%	2%	98%	2%	80%	20%
1998-99	17,976	4,575	3,086	1,790	601	7	6,025	5,183	2,532	937	6,043	186	6,154	329	42,417	13,006
	80%	20%	63%	37%	99%	1%	53%	47%	73%	27%	97%	3%	95%	5%	77%	23%
1999-00	18,003	3,984	6,295	2,274	675	1	6,109	5,857	3,059	635	9,378	29	7,529	227	51,049	13,007
	82%	18%	73%	27%	100%	0%	51%	49%	83%	17%	100%	0%	97%	3%	80%	20%
2000-01	17,288	4,081	8,620	1,677	2,124	10	6,269	6,127	6,734	792	13,678	103	8,318	1,204	63,031	13,994
	81%	19%	84%	16%	100%	0%	51%	49%	89%	11%	99%	1%	87%	13%	82%	18%
2001-02	12,803	3,239	14,013	1,299	1,468	1	7,763	4,688	5,329	429	5,689	56	4,164	301	51,229	10,013
	80%	20%	92%	8%	100%	0%	62%	38%	93%	7%	99%	1%	93%	7%	84%	16%
2002-03	8,661	2,979	7,111	879	365	0	7,951	2,924	3,714	747	7,719	54	2,001	222	37,522	7,805
	74%	26%	89%	11%	100%	0%	73%	27%	83%	17%	99%	1%	90%	10%	83%	17%
2003-04	11,838	3,033	8,376	559	763	37	3,724	4,262	4,972	735	12,262	114	3,011	260	44,947	8,999
	80%	20%	94%	6%	95%	5%	47%	53%	87%	13%	99%	1%	92%	8%	83%	17%
2004-05	10,558	1,949	6,033	444	176	0	4,469	3,868	3,836	636	9,989	49	3,437	73	38,498	7,020
	84%	16%	93%	7%	100%	0%	54%	46%	86%	14%	100%	0%	98%	2%	85%	15%
2005-06	12,532	1,651	12,819	353	508	20	2,643	4,909	8,314	243	9,870	219	3,450	463	50,136	7,857
	88%	12%	97%	3%	96%	4%	35%	65%	97%	3%	98%	2%	88%	12%	86%	14%

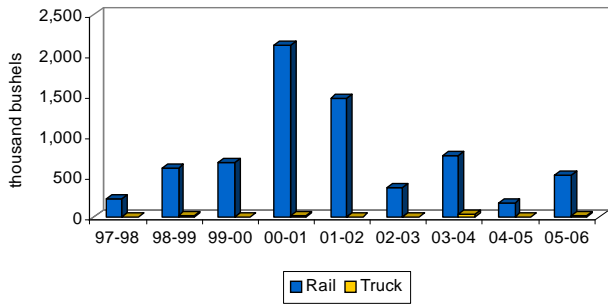
Durum to Minneapolis-St. Paul
1997-98 to 2005-06



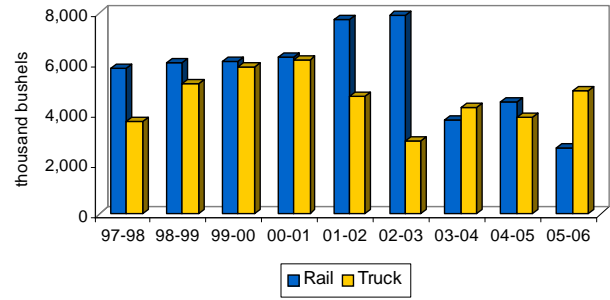
Durum to Duluth-Superior
1997-98 to 2005-06



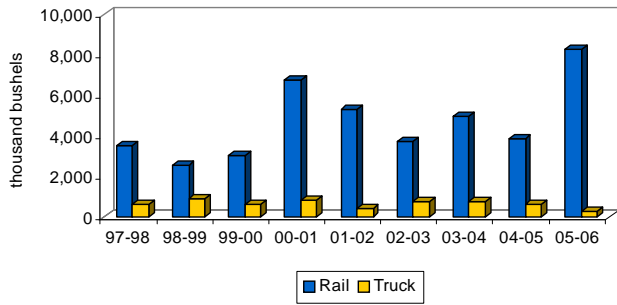
Durum to PNW
1997-98 to 2005-06



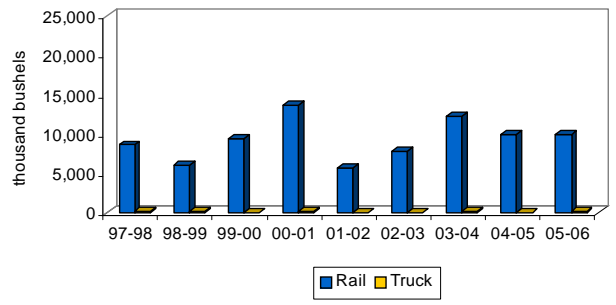
Durum to North Dakota
1997-98 to 2005-06



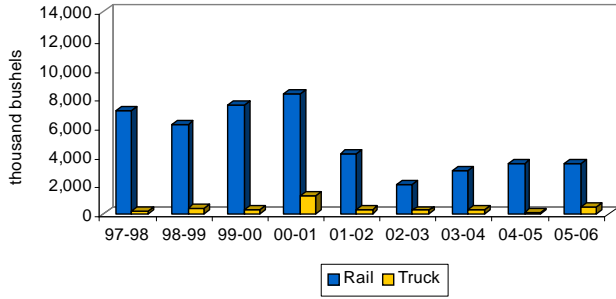
Durum to Other Minnesota & Wisconsin
1997-98 to 2005-06



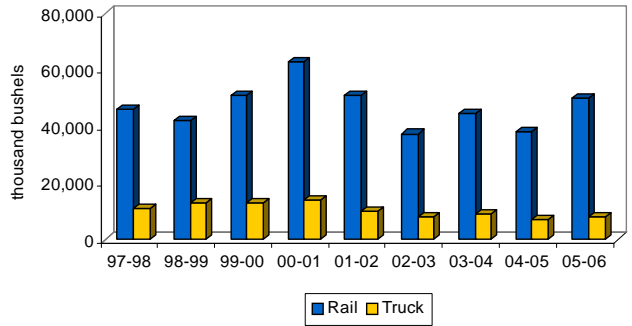
Durum to Midland & Gulf
1997-98 to 2005-06



Durum to Other Markets
1997-98 to 2005-06

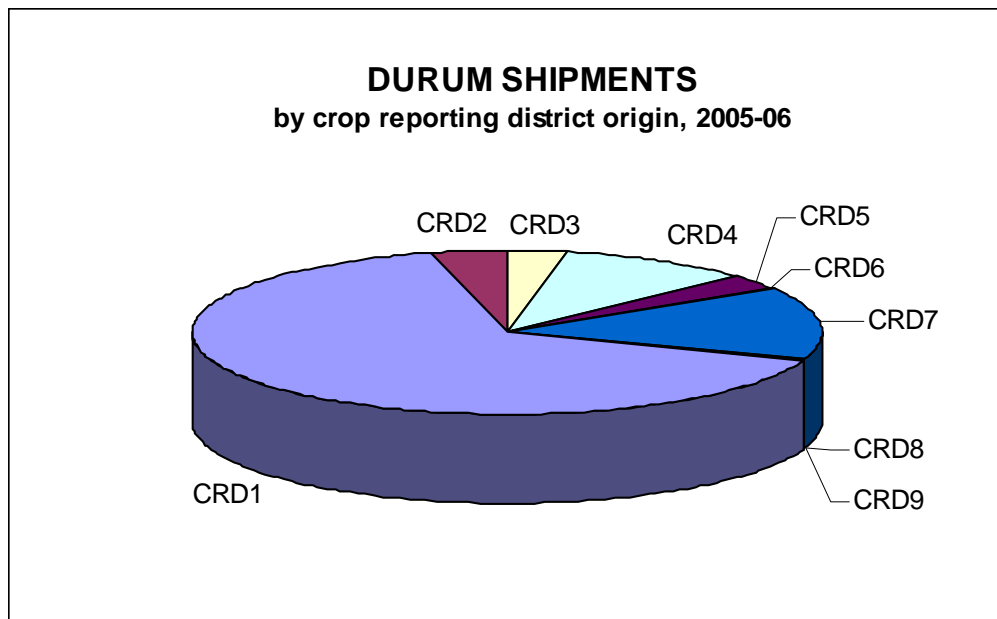


Total Durum Shipments
1997-98 to 2005-06



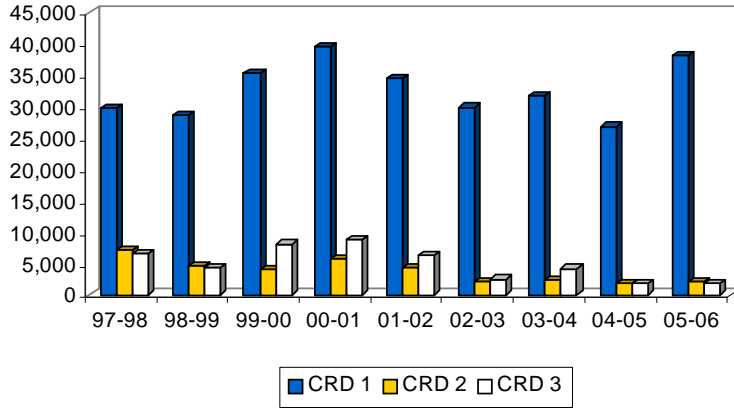
**NORTH DAKOTA DURUM SHIPMENTS
BY CROP REPORTING DISTRICT ORIGIN
thousand bu.**

YEAR	Crop Reporting District									TOTAL
	1	2	3	4	5	6	7	8	9	
1997-98	29,715	7,204	6,520	7,352	2,484	240	3,469	137	429	57,551
	52%	13%	11%	13%	4%	0%	6%	0%	1%	100%
1998-99	28,588	4,678	4,323	8,010	3,128	998	4,996	285	417	55,423
	52%	8%	8%	14%	6%	2%	9%	1%	1%	100%
1999-00	35,273	4,116	8,131	5,954	3,250	1,815	4,321	352	844	64,056
	55%	6%	13%	9%	5%	3%	7%	1%	1%	100%
2000-01	39,479	5,751	8,864	8,838	3,393	1,899	7,601	514	687	77,025
	51%	7%	12%	11%	4%	2%	10%	1%	1%	100%
2001-02	34,510	4,393	6,252	5,096	2,600	752	6,910	349	380	61,242
	56%	7%	10%	8%	4%	1%	11%	1%	1%	100%
2002-03	29,854	2,146	2,535	3,752	1,444	160	5,216	110	110	45,327
	66%	5%	6%	8%	3%	0%	12%	0%	0%	100%
2003-04	31,759	2,478	4,187	5,305	2,390	272	7,099	185	271	53,946
	59%	5%	8%	10%	4%	1%	13%	0%	1%	100%
2004-05	26,849	1,864	1,818	5,088	1,388	453	7,544	199	314	45,518
	59%	4%	4%	11%	3%	1%	17%	0%	1%	100%
2005-06	38,091	2,120	1,877	5,776	1,635	144	8,128	132	89	57,993
	66%	4%	3%	10%	3%	0%	14%	0%	0%	100%

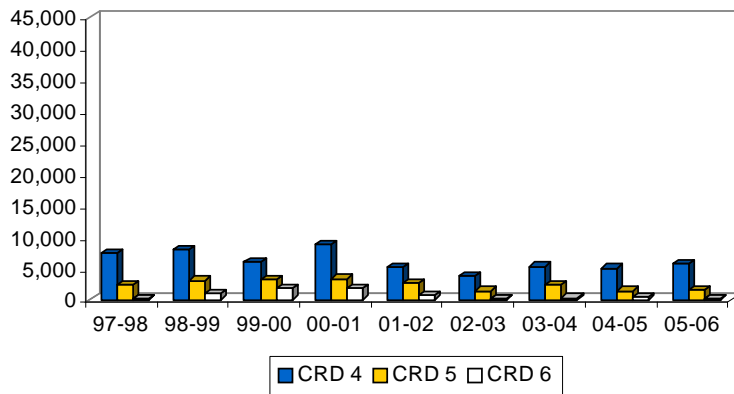


**DURUM SHIPMENTS
BY CROP REPORTING DISTRICT
(Thousand Bushels)**

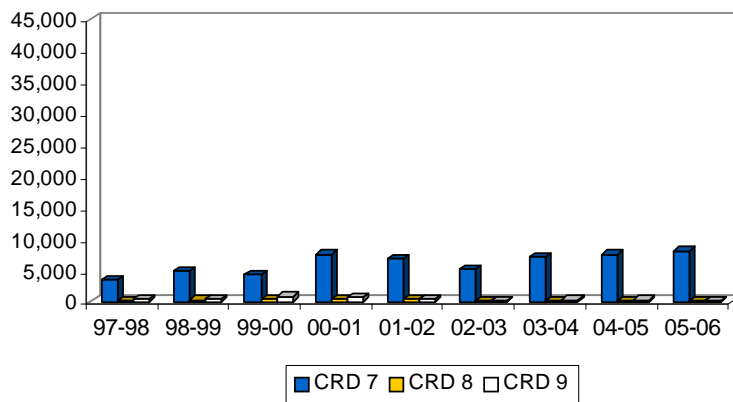
Northern Crop Reporting Districts



Central Crop Reporting Districts



Southern Crop Reporting Districts





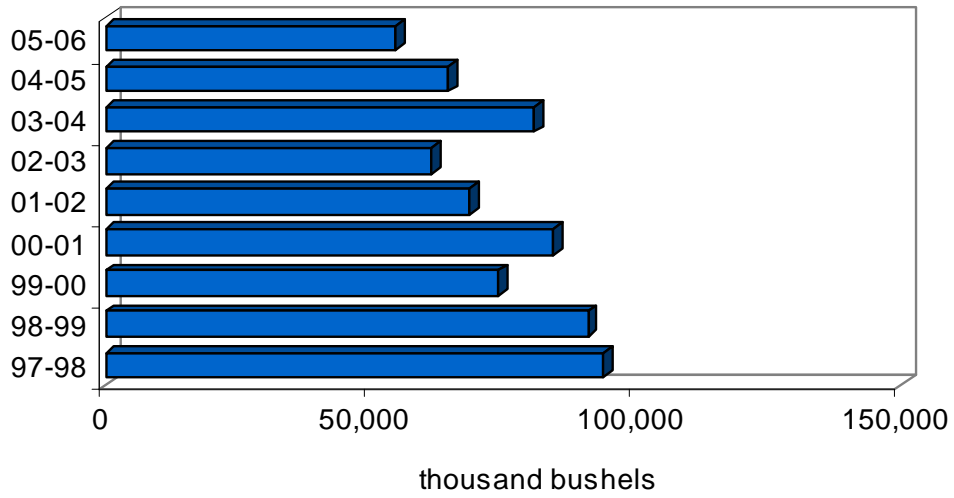
BARLEY

**NORTH DAKOTA BARLEY SHIPMENTS
BY DESTINATION
thousand bu.**

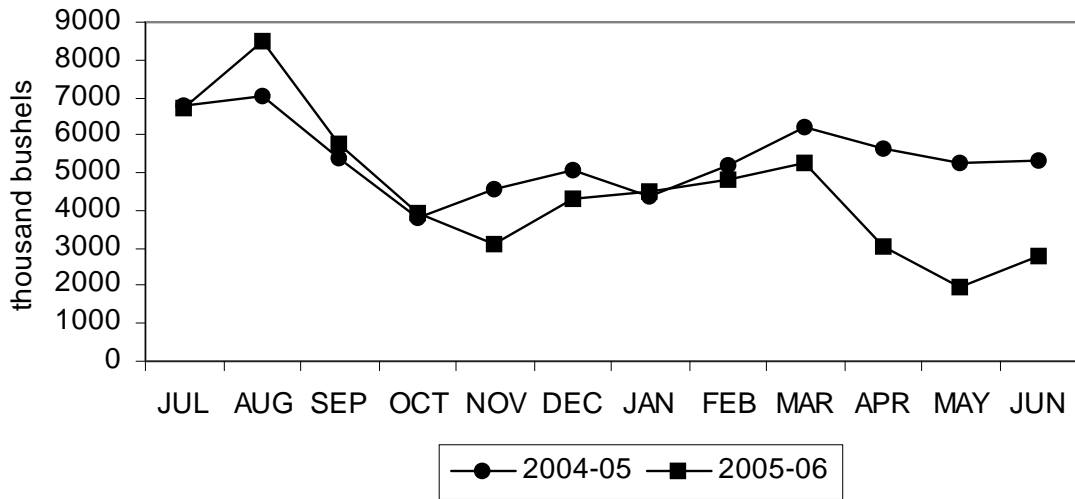
YEAR	Minneapolis- St. Paul	Duluth- Superior	PNW	North Dakota	Other Minn. & Wisconsin	Midland & Gulf	Other	TOTAL
1997-98	29,336	9,213	10,819	18,506	9,377	5,902	10,853	94,006
	31%	10%	12%	20%	10%	6%	12%	100%
1998-99	35,337	3,400	4,314	20,532	8,680	7,642	11,132	91,037
	39%	4%	5%	23%	10%	8%	12%	100%
1999-00	32,210	3,245	738	17,562	6,359	5,256	8,772	74,142
	43%	4%	1%	24%	9%	7%	12%	100%
2000-01	29,486	4,361	7,266	17,222	5,871	8,278	12,047	84,531
	35%	5%	9%	20%	7%	10%	14%	100%
2001-02	26,576	3,435	5,151	9,985	5,668	6,757	11,083	68,655
	39%	5%	8%	15%	8%	10%	16%	100%
2002-03	21,672	1,325	1,030	12,626	12,309	4,612	7,910	61,485
	35%	2%	2%	21%	20%	8%	13%	100%
2003-04	27,119	3,773	3,029	16,305	17,427	4,657	8,458	80,768
	34%	5%	4%	20%	22%	6%	10%	100%
2004-05*	20,639	1,024	3,674	16,234	9,611	5,432	7,957	64,569
	32%	2%	6%	25%	15%	8%	12%	100%
2005-06*	14,787	1,504	4,114	12,561	10,723	4,051	7,004	54,745
	27%	3%	8%	23%	20%	7%	13%	100%

* Results are preliminary.

BARLEY SHIPMENTS 1997-98 to 2005-06



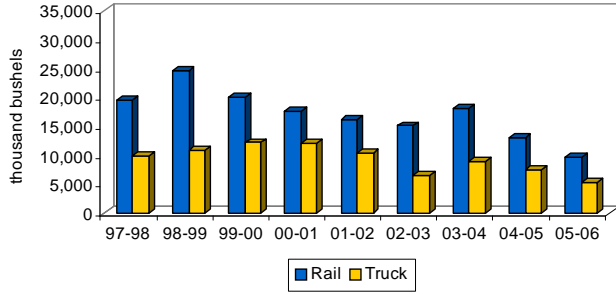
BARLEY SHIPMENTS by month, 2004-05 to 2005-06



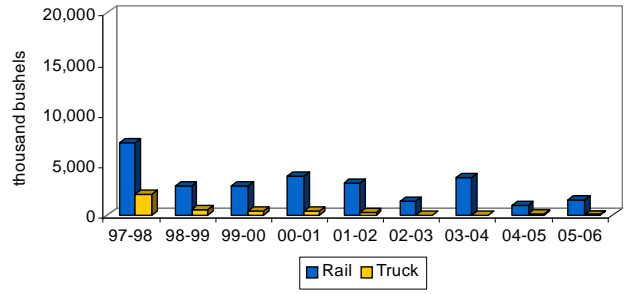
**NORTH DAKOTA BARLEY SHIPMENTS
BY RAIL, TRUCK AND DESTINATION
thousand bu.**

YEAR	Minneapolis-St. Paul		Duluth-Superior		PNW		North Dakota		Other Minn. & Wisconsin		Midland & Gulf		Other		TOTAL	
	Rail	Truck	Rail	Truck	Rail	Truck	Rail	Truck	Rail	Truck	Rail	Truck	Rail	Truck	Rail	Truck
1997-98	19,541	9,795	7,207	2,006	10,779	40	2,509	15,997	5,964	3,413	5,154	748	9,874	979	61,027	32,979
	67%	33%	78%	22%	100%	0%	14%	86%	64%	36%	87%	13%	91%	9%	65%	35%
1998-99	24,581	10,756	2,862	538	4,244	70	4,922	15,610	5,860	2,820	6,801	841	9,976	1,156	59,246	31,791
	70%	30%	84%	16%	98%	2%	24%	76%	68%	32%	89%	11%	90%	10%	65%	35%
1999-00	20,034	12,176	2,907	339	648	90	3,516	14,047	4,601	1,767	4,653	603	6,915	1,857	43,274	30,868
	62%	38%	90%	10%	88%	12%	20%	80%	72%	28%	89%	11%	79%	21%	58%	42%
2000-01	17,512	11,974	3,910	451	7,203	63	3,883	13,340	3,951	1,921	7,842	436	11,113	934	55,413	29,118
	89%	41%	90%	10%	99%	1%	23%	77%	67%	33%	95%	5%	92%	8%	66%	34%
2001-02	16,174	10,402	3,170	265	5,078	74	1,200	8,785	3,924	1,744	6,395	362	10,027	1,056	45,967	22,688
	61%	39%	92%	8%	99%	1%	12%	88%	69%	31%	95%	5%	90%	10%	67%	33%
2002-03	15,080	6,592	1,293	33	1,004	26	3,561	9,065	10,003	2,306	4,380	232	6,817	1,094	42,137	19,348
	70%	30%	98%	2%	97%	3%	28%	72%	81%	19%	95%	5%	86%	14%	69%	31%
2003-04	18,145	8,974	3,739	35	2,911	118	4,066	12,238	16,454	973	4,431	226	6,008	2,450	55,753	25,014
	67%	33%	99%	1%	96%	4%	25%	75%	94%	6%	95%	5%	71%	29%	69%	31%
2004-05	13,119	7,520	918	106	3,674	0	3,009	13,224	8,757	853	4,911	521	6,794	1,163	41,182	23,387
	64%	36%	90%	10%	100%	0%	19%	81%	91%	9%	90%	10%	85%	15%	64%	36%
2005-06	9,546	5,241	1,465	39	4,091	24	2,338	10,223	9,958	765	3,669	382	6,074	930	37,141	17,604
	65%	35%	97%	3%	99%	1%	19%	81%	93%	7%	91%	9%	87%	13%	68%	32%

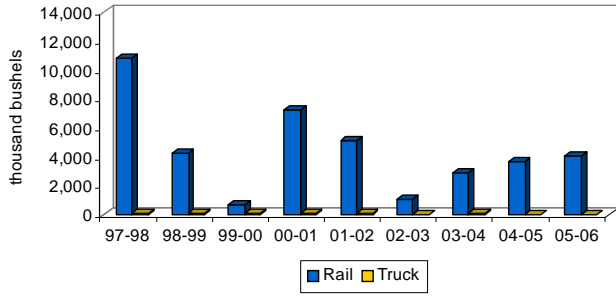
Barley to Minneapolis-St. Paul
1997-98 to 2005-06



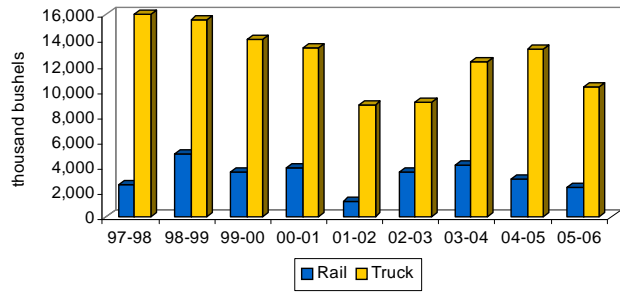
Barley to Duluth-Superior
1997-98 to 2005-06



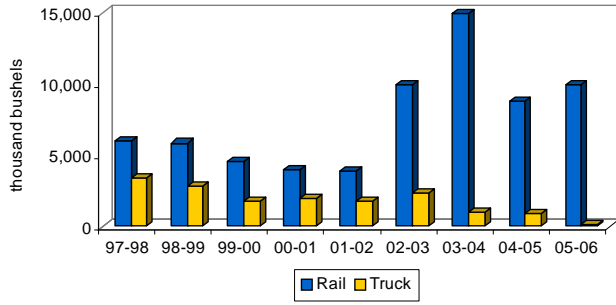
Barley to PNW
1997-98 to 2005-06



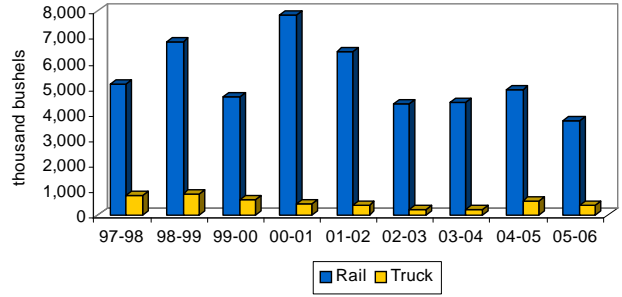
Barley to North Dakota
1997-98 to 2005-06



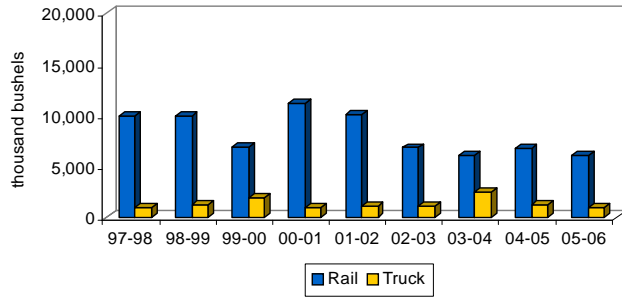
Barley to Other Minnesota & Wisconsin
1997-98 to 2005-06



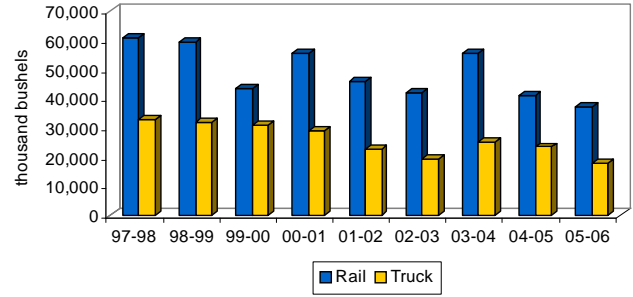
Barley to Midland & Gulf
1997-98 to 2005-06



Barley to Other Markets
1997-98 to 2005-06

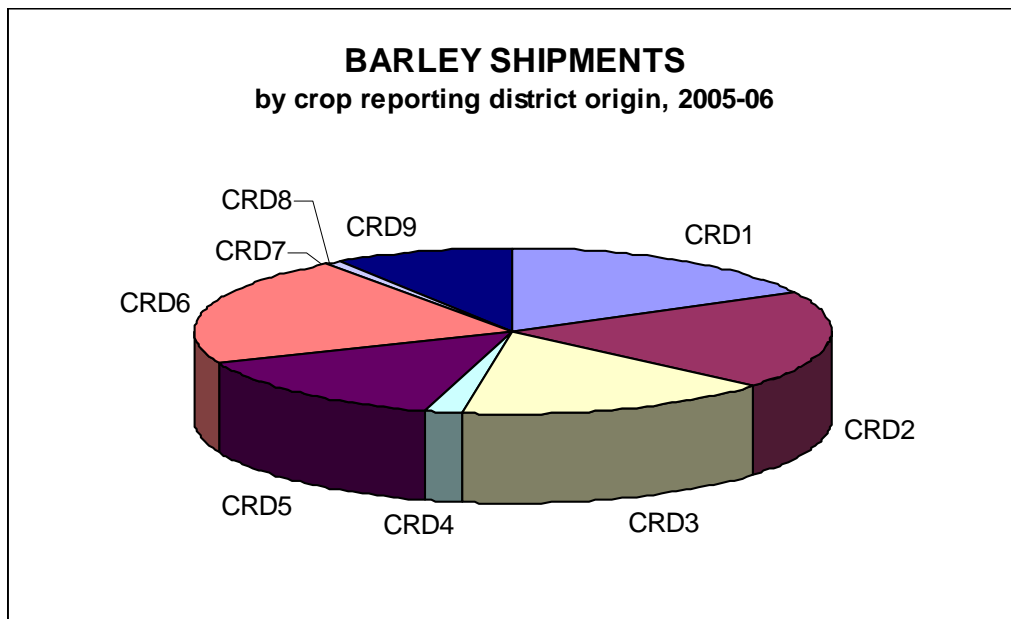


Total Barley Shipments
1997-98 to 2005-06



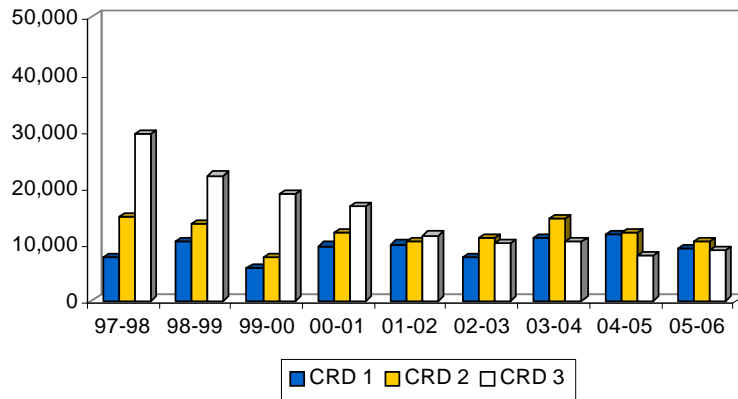
**NORTH DAKOTA BARLEY SHIPMENTS
BY CROP REPORTING DISTRICT ORIGIN
thousand bu.**

YEAR	Crop Reporting District									TOTAL
	1	2	3	4	5	6	7	8	9	
1997-98	7,709	14,852	29,362	1,068	10,354	24,580	18	247	5,817	94,006
	8%	16%	31%	1%	11%	26%	0%	1%	6%	100%
1998-99	10,371	13,422	22,038	1,703	11,400	25,946	128	865	5,164	91,037
	11%	15%	24%	2%	13%	29%	0%	1%	6%	100%
1999-00	5,783	7,586	18,844	1,845	9,646	23,957	366	1,046	5,069	74,142
	8%	10%	25%	2%	13%	32%	0%	1%	7%	100%
2000-01	9,657	12,064	16,593	3,246	11,351	22,212	521	1,528	7,359	84,531
	11%	14%	20%	4%	13%	26%	1%	2%	9%	100%
2001-02	9,923	10,333	11,493	2,438	8,361	17,321	641	1,177	6,968	68,655
	14%	15%	17%	4%	12%	25%	1%	2%	10%	100%
2002-03	7,712	10,943	10,120	1,210	6,360	20,612	139	147	4,241	61,485
	13%	18%	16%	2%	10%	34%	0%	0%	7%	100%
2003-04	11,126	14,405	10,344	1,804	7,266	29,368	479	969	5,007	80,768
	14%	18%	13%	2%	9%	36%	1%	1%	6%	100%
2004-05	11,758	11,901	7,974	124	8,915	16,770	21	684	5,223	64,569
	18%	18%	12%	0%	14%	26%	0%	1%	8%	100%
2005-06	9,225	10,494	8,909	1,088	7,897	11,529	192	424	4,986	54,745
	17%	19%	16%	2%	14%	21%	0%	1%	9%	100%

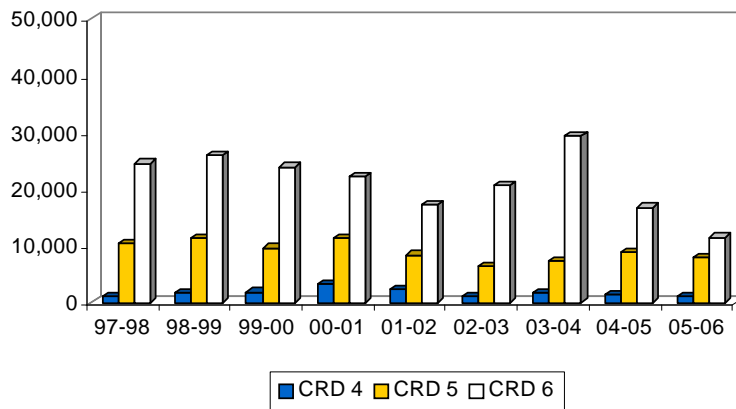


**BARLEY SHIPMENTS
BY CROP REPORTING DISTRICT
(Thousand Bushels)**

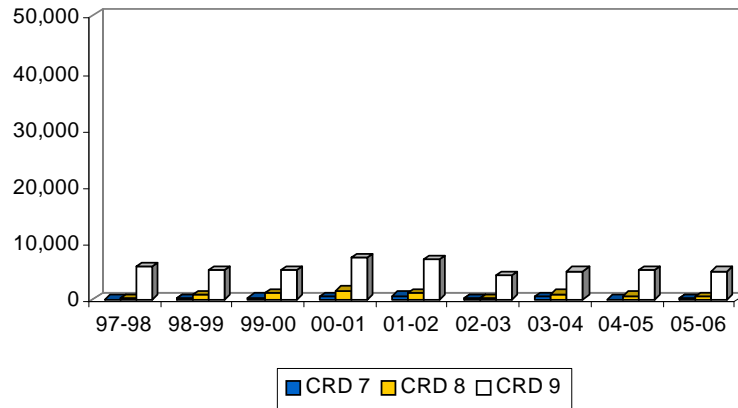
Northern Crop Reporting Districts



Central Crop Reporting Districts



Southern Crop Reporting Districts





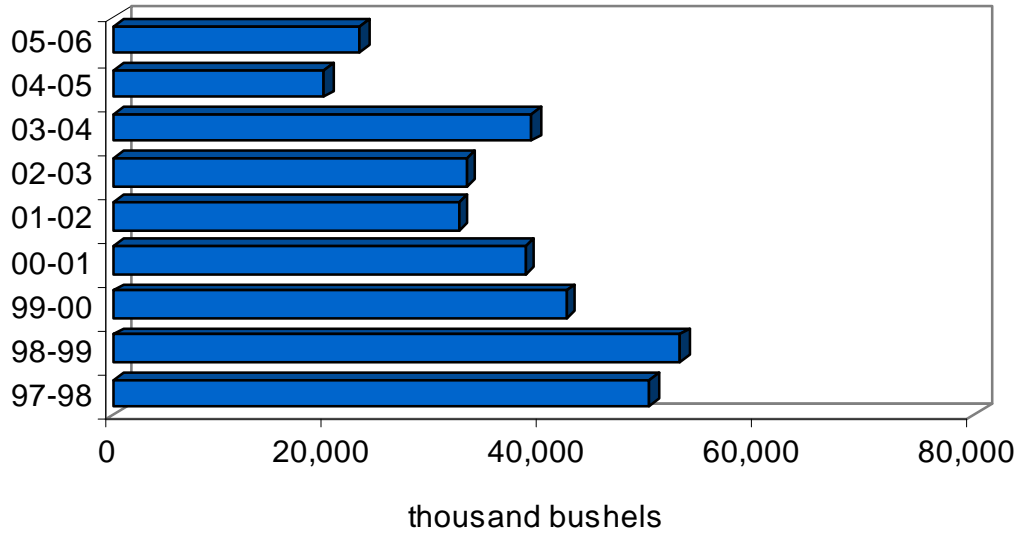
SUNFLOWER

**NORTH DAKOTA SUNFLOWER SHIPMENTS
BY DESTINATION
thousand bu.**

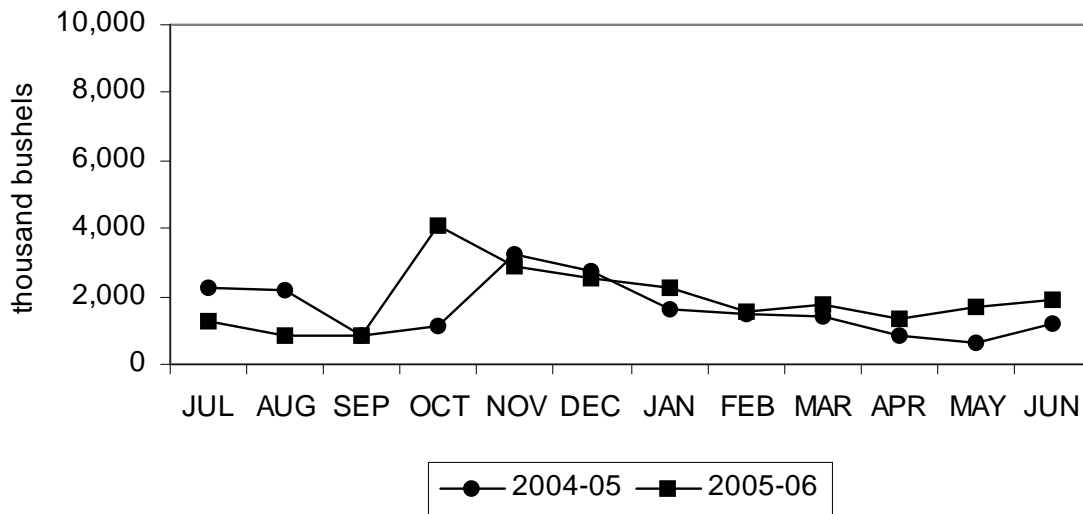
YEAR	Minneapolis- St. Paul	Duluth- Superior	PNW	North Dakota	Other Minn. & Wisconsin	Midland & Gulf	Other	TOTAL
1997-98	2,247	3,179	279	36,647	3,676	616	3,167	49,803
	5%	6%	1%	74%	7%	1%	6%	100%
1998-99	4,664	3,310	352	35,426	4,032	571	4,261	52,590
	9%	6%	1%	67%	8%	1%	8%	100%
1999-00	2,312	789	360	29,836	4,141	550	4,068	42,052
	5%	2%	1%	71%	10%	1%	10%	100%
2000-01	2,287	15	462	26,868	3,657	932	3,968	38,194
	6%	0%	1%	70%	10%	2%	10%	100%
2001-02	1,748	720	371	20,935	3,885	487	3,910	32,042
	5%	2%	1%	65%	12%	2%	12%	100%
2002-03	1,248	11	401	19,207	4,676	1,120	6,034	32,708
	4%	0%	1%	59%	14%	3%	18%	100%
2003-04	3,496	32	357	21,489	6,404	996	6,078	38,830
	9%	0%	1%	55%	16%	3%	16%	100%
2004-05	786	12	170	9,817	4,680	412	3,624	19,470
	4%	0%	1%	50%	24%	2%	19%	100%
2005-06*	1,264	0	221	15,312	3,312	293	2,461	22,850
	6%	0%	1%	67%	14%	1%	11%	100%

* Results are preliminary.

SUNFLOWER SHIPMENTS 1997-98 to 2005-06



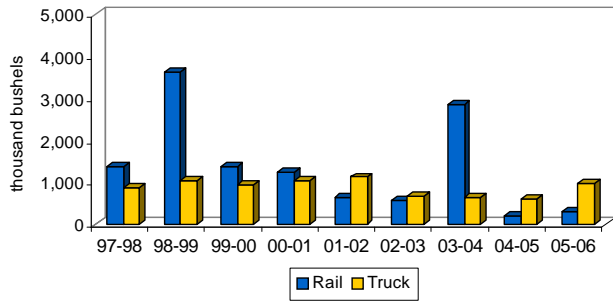
SUNFLOWER SHIPMENTS by month, 2004-05 to 2005-06



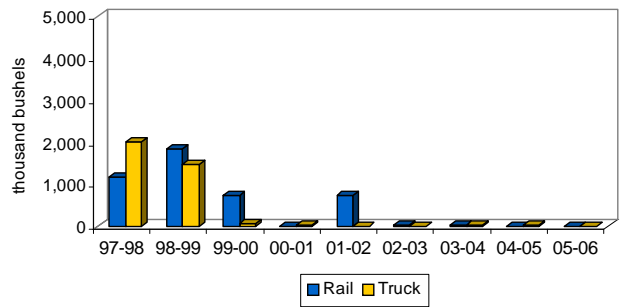
**NORTH DAKOTA SUNFLOWER SHIPMENTS
BY RAIL, TRUCK AND DESTINATION
thousand bu.**

YEAR	Minneapolis-St. Paul		Duluth-Superior		PNW		North Dakota		Other Minn. & Wisconsin		Midland & Gulf		Other		TOTAL	
	Rail	Truck	Rail	Truck	Rail	Truck	Rail	Truck	Rail	Truck	Rail	Truck	Rail	Truck	Rail	Truck
1997-98	1,381	866	1,158	2,021	4	275	1,588	35,059	606	3,070	69	547	895	2,272	5,699	44,104
	61%	39%	36%	64%	1%	99%	4%	96%	16%	84%	11%	89%	28%	72%	11%	89%
1998-99	3,622	1,042	1,830	1,480	9	343	3,302	32,124	520	3,512	36	535	1,718	2,543	11,034	41,556
	78%	22%	55%	45%	3%	97%	9%	91%	13%	87%	6%	94%	40%	60%	21%	79%
1999-00	1,387	925	723	66	46	314	2,340	27,496	161	3,980	43	507	1,276	2,792	5,977	36,075
	60%	40%	92%	8%	13%	87%	8%	92%	4%	96%	8%	92%	31%	69%	14%	86%
2000-01	1,250	1,037	0	15	47	415	2,828	24,040	117	3,540	4	928	643	3,325	4,887	33,307
	55%	45%	0%	100%	10%	90%	11%	89%	3%	97%	0%	100%	16%	84%	13%	87%
2001-02	628	1,120	717	3	4	367	2,349	18,586	185	3,700	30	457	662	3,248	4,574	27,468
	36%	64%	100%	0%	1%	99%	11%	89%	5%	95%	6%	94%	17%	83%	14%	86%
2002-03	579	669	11	0	45	356	2,155	17,052	285	4,391	176	944	1,889	4,145	5,140	27,568
	46%	54%	100%	0%	11%	89%	11%	89%	6%	94%	16%	84%	31%	69%	16%	84%
2003-04	2,864	632	12	20	20	337	2,005	19,484	1,079	5,325	353	643	1,665	4,413	7,996	30,834
	82%	18%	38%	63%	6%	94%	9%	91%	17%	83%	35%	65%	27%	73%	21%	79%
2004-05	187	599	0	12	7	163	277	9,540	341	4,339	0	412	409	3,215	1,222	18,248
	24%	76%	0%	100%	4%	96%	3%	97%	7%	93%	0%	100%	11%	89%	6%	94%
2005-06	297	967	0	0	0	221	592	14,720	695	2,617	45	248	1,035	1,426	2,663	20,187
	23%	77%	0%	0%	0%	100%	4%	96%	21%	79%	15%	85%	42%	58%	12%	88%

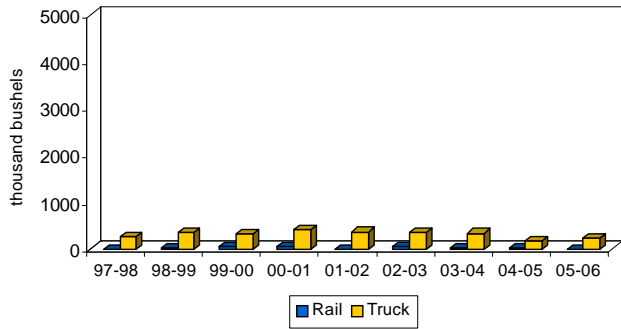
Sunflower to Minneapolis-St. Paul
1997-98 to 2005-06



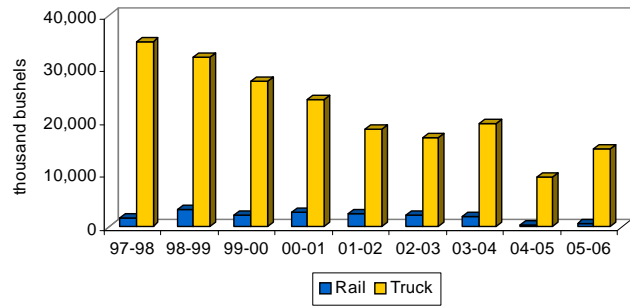
Sunflower to Duluth-Superior
1997-98 to 2005-06



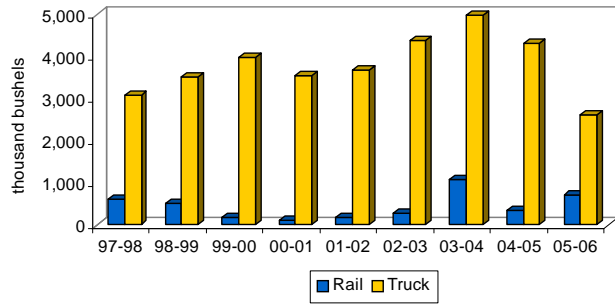
Sunflower to PNW
1997-98 to 2005-06



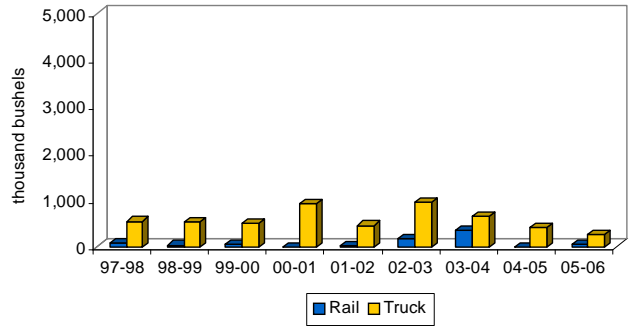
Sunflower to North Dakota
1997-98 to 2005-06



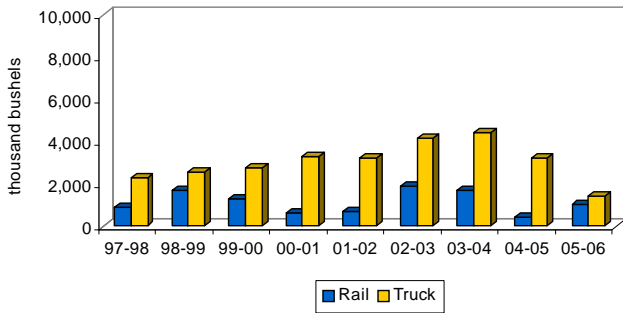
Sunflower to Other Minnesota & Wisconsin
1997-98 to 2005-06



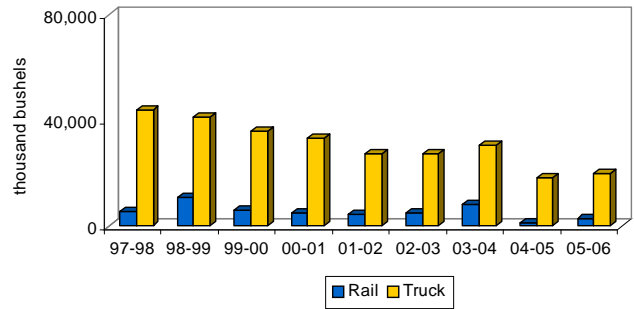
Sunflower to Midland & Gulf
1997-98 to 2005-06



Sunflower to Other Markets
1997-98 to 2005-06

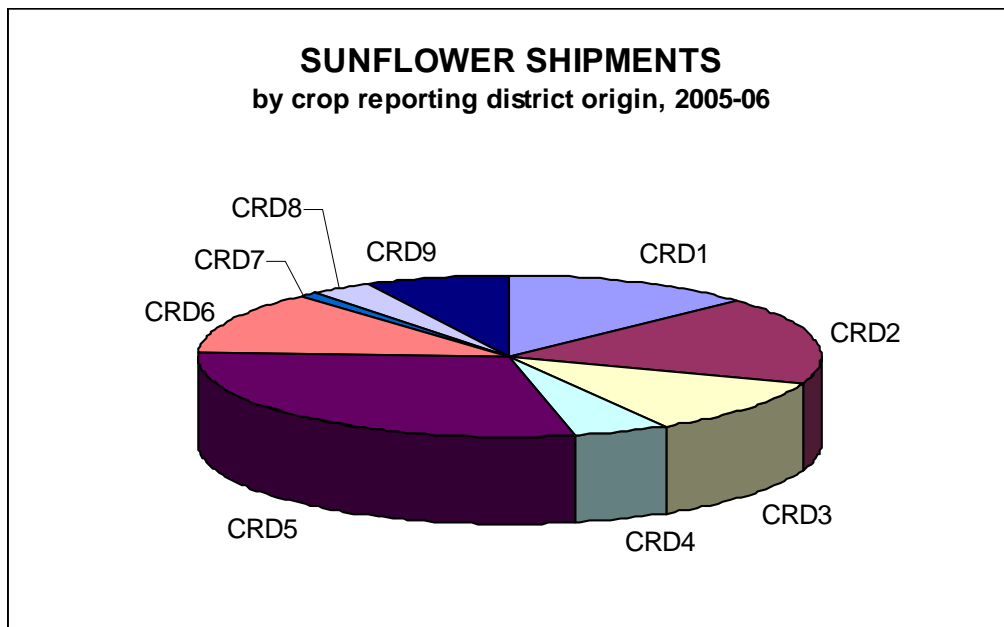


Total Sunflower Shipments
1997-98 to 2005-06



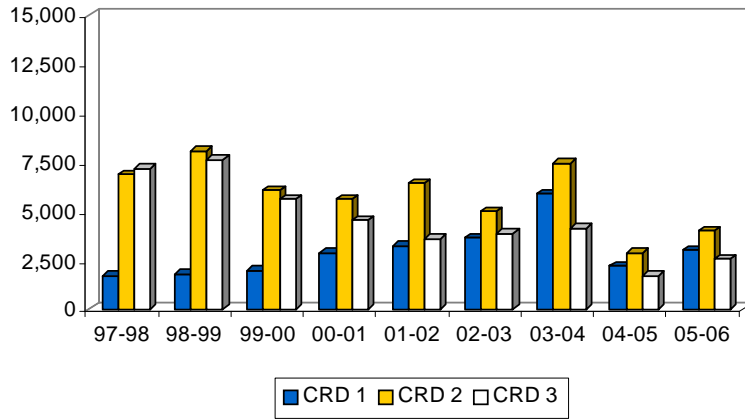
**NORTH DAKOTA SUNFLOWER SHIPMENTS
BY CROP REPORTING DISTRICT ORIGIN
thousand bu.**

YEAR	Crop Reporting District									TOTAL
	1	2	3	4	5	6	7	8	9	
1997-98	1,699	6,846	7,179	281	11,028	9,115	201	664	12,790	49,803
	3%	14%	14%	1%	22%	18%	1%	1%	26%	100%
1998-99	1,805	8,077	7,620	567	11,006	8,765	618	1,151	12,981	52,590
	3%	15%	14%	1%	21%	17%	1%	2%	25%	100%
1999-00	1,979	6,062	5,611	585	10,646	6,609	722	1,743	8,095	42,052
	5%	14%	13%	1%	25%	16%	2%	4%	19%	100%
2000-01	2,589	5,595	4,556	701	9,693	5,170	427	2,624	6,539	38,194
	8%	15%	12%	2%	25%	14%	1%	7%	17%	100%
2001-02	3,250	6,399	3,591	1,140	7,453	3,925	429	2,033	3,822	32,042
	10%	20%	11%	4%	23%	12%	1%	6%	12%	100%
2002-03	3,655	4,992	3,872	1,642	9,337	3,844	284	1,717	3,365	32,708
	11%	15%	12%	5%	29%	12%	1%	5%	10%	100%
2003-04	5,893	7,463	4,132	1,505	10,883	4,253	221	1,862	2,618	38,830
	15%	19%	11%	4%	28%	11%	1%	5%	7%	100%
2004-05	2,184	2,884	1,705	1,210	5,134	3,383	172	773	2,024	19,470
	11%	15%	9%	6%	26%	17%	1%	4%	10%	100%
2004-05	301	4,005	2,566	1,153	6,473	2,938	234	733	1,733	22,850
	1%	18%	11%	5%	28%	13%	1%	3%	8%	100%

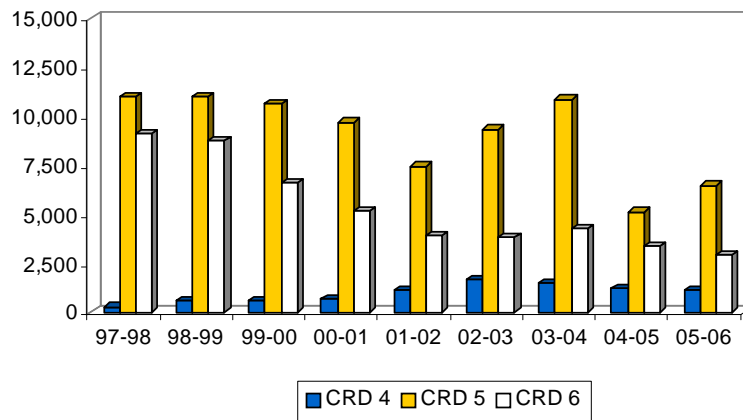


SUNFLOWER SHIPMENTS BY CROP REPORTING DISTRICT (Thousand Bushels)

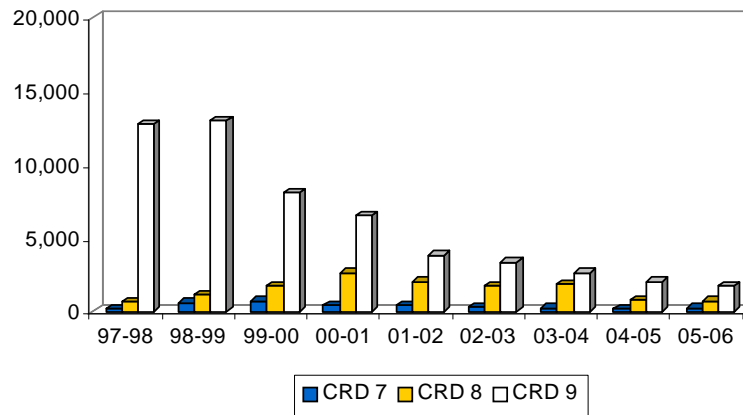
Northern Crop Reporting Districts



Central Crop Reporting Districts



Southern Crop Reporting Districts





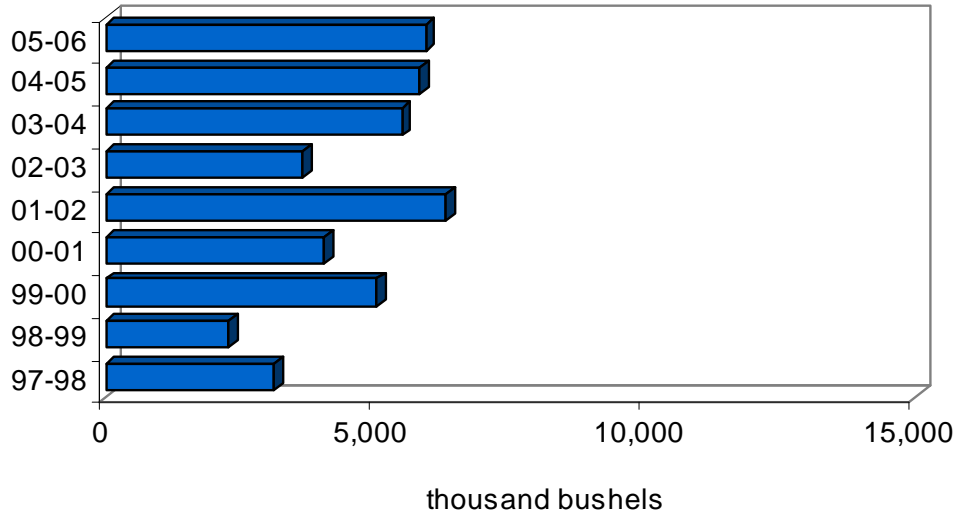
OATS

**NORTH DAKOTA OATS SHIPMENTS
BY DESTINATION
thousand bu.**

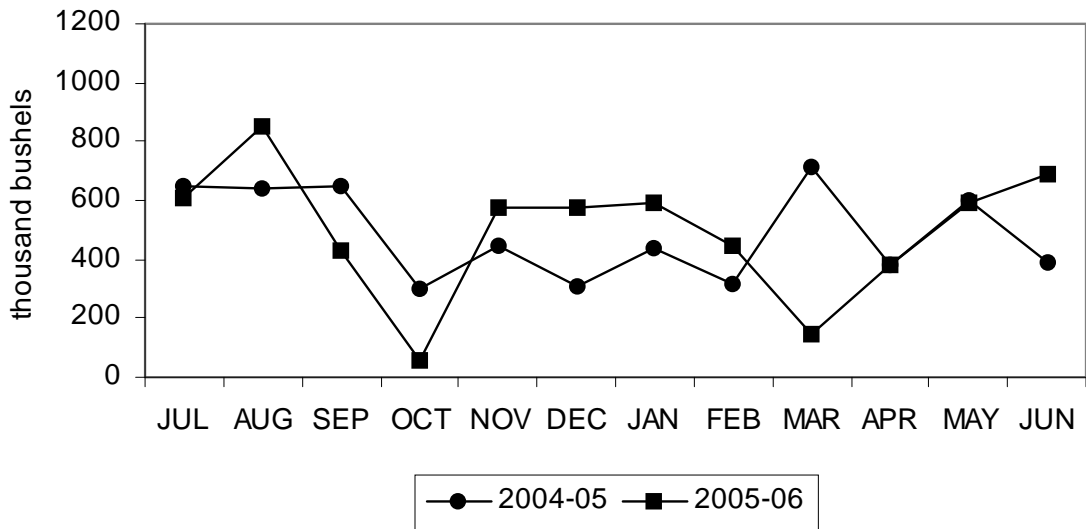
YEAR	Minneapolis- St. Paul	Duluth- Superior	PNW	North Dakota	Other Minn. & Wisconsin	Midland & Gulf	Other	TOTAL
1997-98	1,503	102	92	81	99	667	585	3,128
	48%	3%	3%	3%	3%	21%	19%	100%
1998-99	715	20	53	47	67	392	978	2,273
	31%	1%	2%	2%	3%	17%	43%	100%
1999-00	1,047	18	2	99	429	2,556	883	5,034
	21%	0%	0%	2%	9%	51%	18%	100%
2000-01	276	0	14	97	1,107	2,388	148	4,031
	7%	0%	0%	2%	27%	59%	4%	100%
2001-02	1,037	2	550	188	434	2,330	1,775	6,314
	16%	0%	9%	3%	7%	37%	28%	100%
2002-03	1,074	5	292	268	84	786	1,147	3,655
	29%	0%	8%	7%	2%	22%	31%	100%
2003-04	133	193	94	152	118	2,782	814	5,487
	24%	4%	2%	3%	2%	51%	15%	100%
2004-05*	729	90	0	196	182	3,342	1,278	5,817
	13%	2%	0%	3%	3%	57%	22%	100%
2005-06*	771	0	0	124	247	2,816	1,967	5,925
	13%	0%	0%	2%	4%	48%	33%	100%

* Results are preliminary.

OATS SHIPMENTS 1997-98 to 2005-06



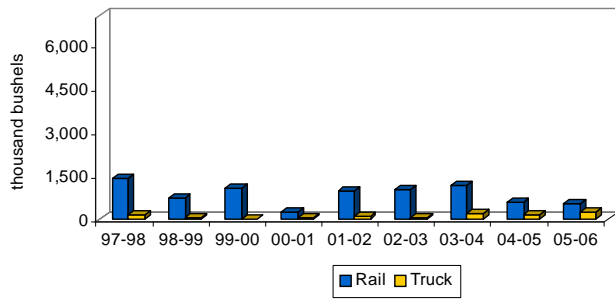
OATS SHIPMENTS by month, 2004-05 to 2005-06



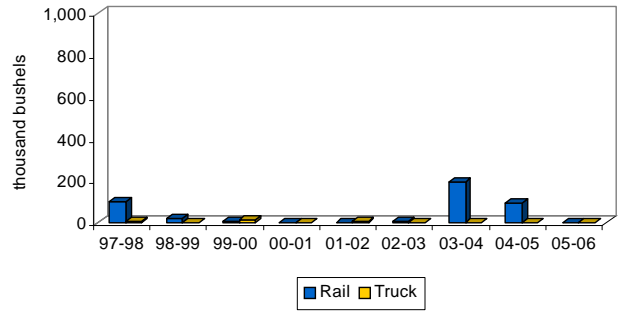
**NORTH DAKOTA OATS SHIPMENTS
BY RAIL, TRUCK AND DESTINATION
thousand bu.**

YEAR	Minneapolis-St. Paul		Duluth-Superior		PNW		North Dakota		Other Minn. & Wisconsin		Midland & Gulf		Other		TOTAL	
	Rail	Truck	Rail	Truck	Rail	Truck	Rail	Truck	Rail	Truck	Rail	Truck	Rail	Truck	Rail	Truck
1997-98	1,374	129	97	5	89	2	34	46	19	80	224	443	421	164	2,259	870
	91%	9%	95%	5%	97%	3%	42%	58%	19%	80%	34%	66%	72%	28%	72%	28%
1998-99	700	15	20	0	0	53	0	47	5	62	43	349	889	90	1,656	617
	98%	2%	100%	0%	0%	100%	0%	100%	7%	93%	11%	89%	91%	9%	73%	27%
1999-00	1,402	5	5	13	0	2	9	90	362	66	2,414	143	828	56	4,660	374
	100%	0%	28%	72%	0%	100%	9%	91%	85%	15%	94%	6%	94%	6%	93%	7%
2000-01	224	52	0	0	14	0	19	78	1,079	28	2,244	144	72	76	3,653	378
	81%	19%	0%	0%	100%	0%	20%	80%	97%	3%	94%	6%	48%	52%	91%	9%
2001-02	938	99	0	2	529	21	11	176	383	52	2,182	148	1,622	153	5,664	650
	90%	10%	0%	100%	96%	4%	6%	94%	88%	12%	94%	6%	91%	9%	90%	10%
2002-03	1,020	54	5	0	126	167	62	207	25	59	631	156	905	242	2,772	883
	95%	5%	100%	0%	43%	57%	23%	77%	30%	70%	80%	20%	79%	21%	76%	24%
2003-04	1,170	163	193	0	23	71	0	152	10	108	2,709	73	605	209	4,711	777
	88%	12%	100%	0%	23%	71%	0%	100%	8%	92%	97%	3%	74%	26%	86%	14%
2004-05	591	138	90	0	0	0	27	169	11	171	3,284	58	1,220	58	5,223	594
	81%	19%	100%	0%	0%	0%	14%	86%	6%	94%	98%	2%	95%	5%	90%	10%
2005-06	525	246	0	0	0	0	77	47	31	217	2,803	13	1,921	46	5,357	569
	68%	32%	0%	0%	0%	0%	62%	38%	12%	88%	100%	0%	98%	2%	90%	10%

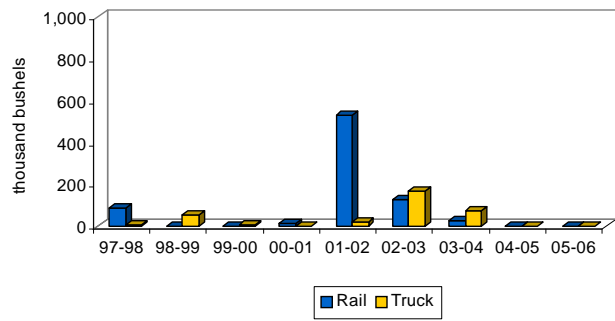
**Oats to Minneapolis-St. Paul
1997-98 to 2005-06**



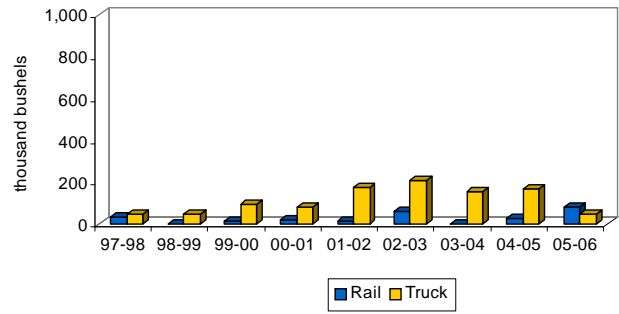
**Oats to Duluth-Superior
1997-98 to 2005-06**



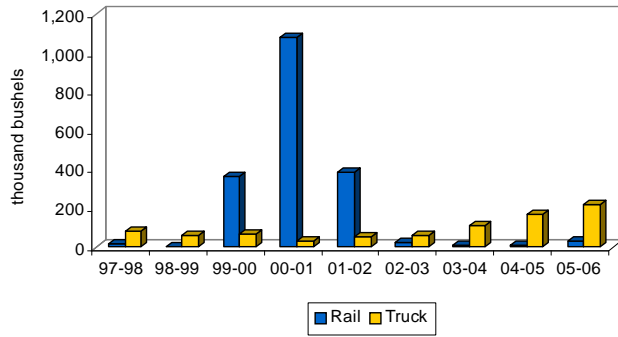
**Oats to PNW
1997-98 to 2005-06**



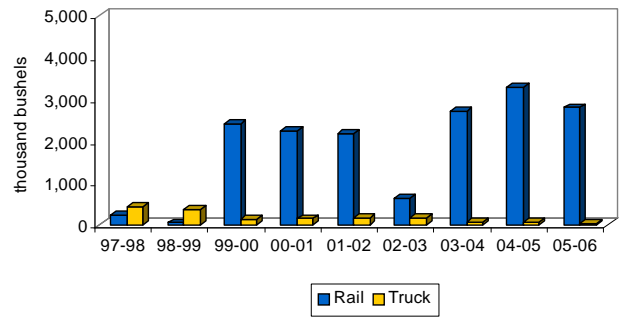
**Oats to North Dakota
1997-98 to 2005-06**



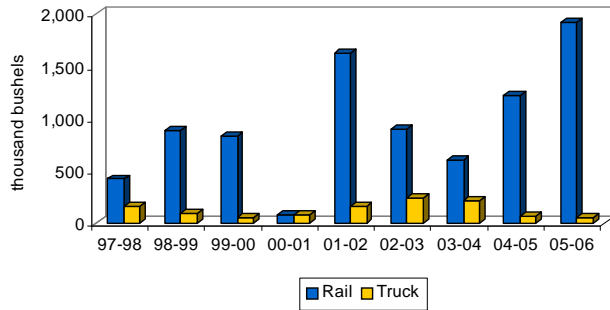
Oats to Other Minnesota & Wisconsin
1997-98 to 2005-06



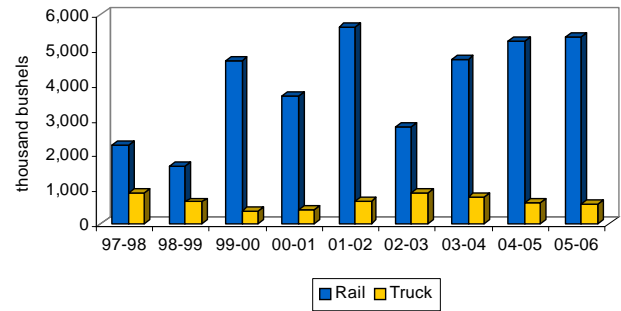
Oats to Midland & Gulf
1997-98 to 2005-06



Oats to Other Markets
1997-98 to 2005-06

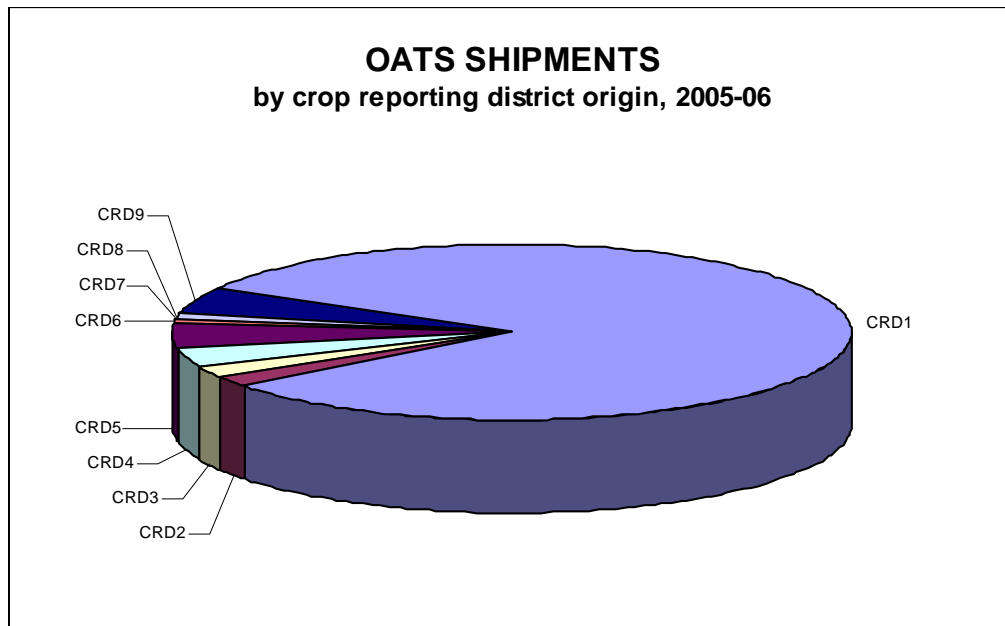


Total Oats Shipments
1997-98 to 2005-06



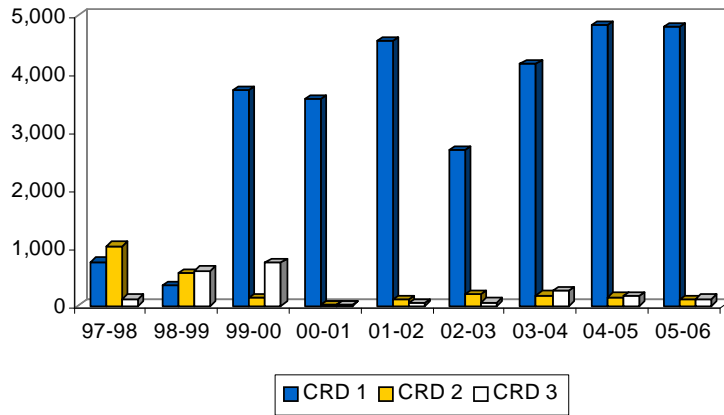
**NORTH DAKOTA OATS SHIPMENTS
BY CROP REPORTING DISTRICT ORIGIN
thousand bu.**

YEAR	Crop Reporting District									TOTAL
	1	2	3	4	5	6	7	8	9	
1997-98	762	1,036	120	447	178	180	62	20	323	3,128
	24%	33%	4%	14%	6%	6%	2%	1%	10%	100%
1998-99	350	556	605	301	64	28	37	103	229	2,273
	16%	25%	27%	13%	3%	1%	2%	5%	10%	100%
1999-00	3,704	144	741	79	76	48	0	95	147	5,034
	74%	3%	15%	2%	2%	1%	0%	2%	3%	100%
2000-01	3,558	11	25	126	35	24	17	86	149	4,031
	88%	0%	1%	3%	1%	1%	0%	2%	4%	100%
2001-02	4,563	100	57	554	263	71	45	154	507	6,314
	72%	2%	1%	9%	4%	1%	1%	2%	8%	100%
2002-03	2,673	205	62	327	64	8	9	17	292	3,655
	73%	6%	2%	9%	2%	0%	0%	0%	8%	100%
2003-04	4,165	181	257	442	74	96	8	47	217	5,487
	76%	3%	5%	8%	1%	2%	0%	1%	4%	100%
2004-05	4,829	152	173	237	76	15	0	77	257	5,817
	22%	30%	3%	4%	1%	0%	0%	1%	4%	100%
2005-06	4,811	108	126	202	280	30	9	59	299	5,925
	22%	30%	2%	3%	5%	1%	0%	1%	5%	100%

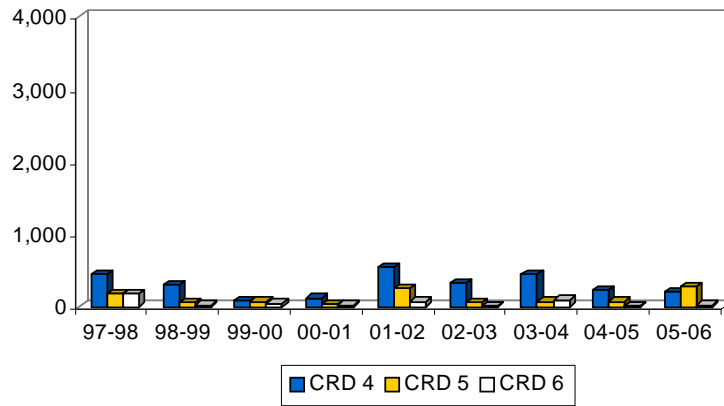


**OATS SHIPMENTS
BY CROP REPORTING DISTRICT
(Thousand Bushels)**

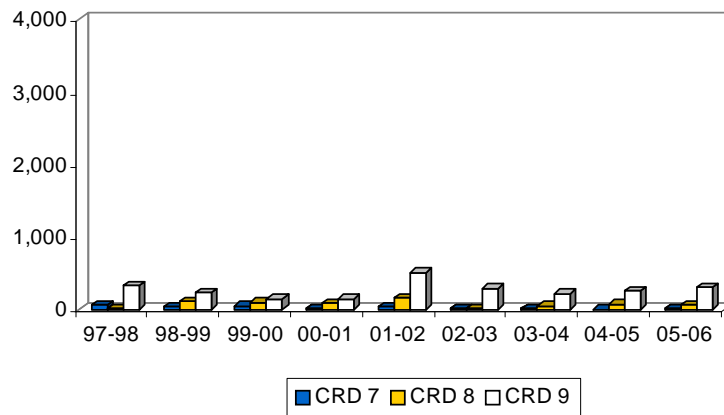
Northern Crop Reporting Districts



Central Crop Reporting Districts



Southern Crop Reporting Districts





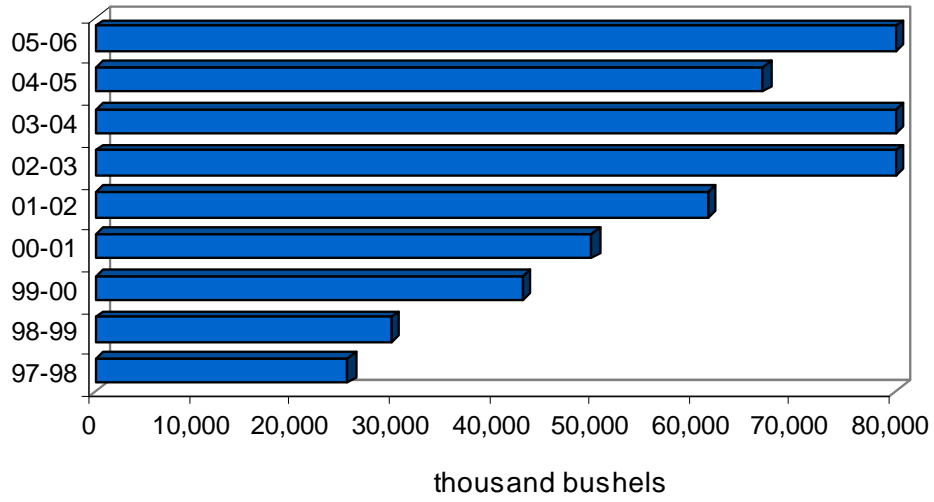
SOYBEANS

**NORTH DAKOTA SOYBEAN SHIPMENTS
BY DESTINATION
thousand bu.**

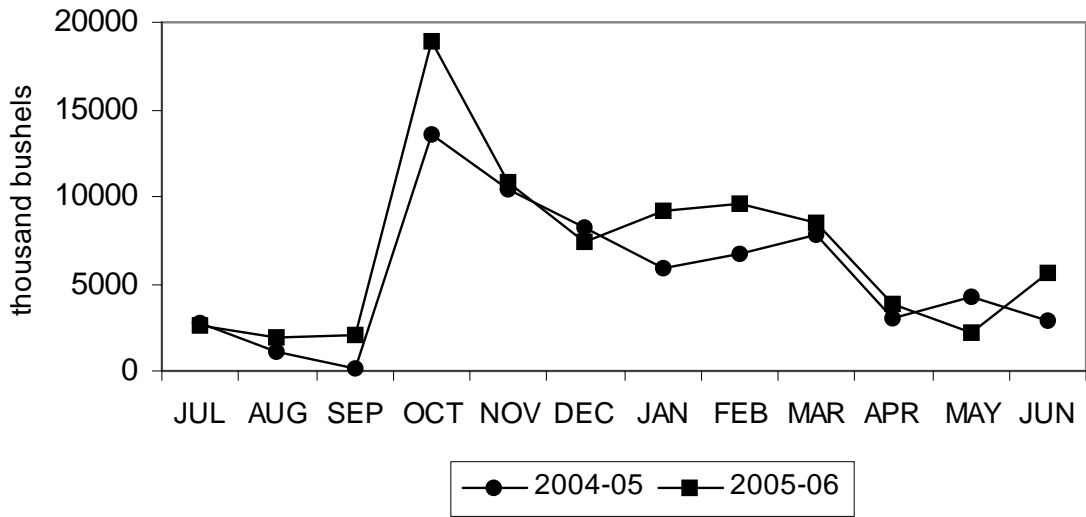
YEAR	Minneapolis- St. Paul	Duluth- Superior	PNW	North Dakota	Other Minn. & Wisconsin	Midland & Gulf	Other	TOTAL
1997-98	4,395	9,210	4,751	2,292	718	813	3,044	25,223
	17%	37%	19%	9%	3%	3%	12%	100%
1998-99	6,708	12,978	3,533	976	1,125	854	3,368	29,542
	23%	44%	12%	3%	4%	3%	11%	100%
1999-00	5,415	20,573	8,393	660	1,099	950	5,577	42,668
	13%	48%	20%	2%	3%	2%	13%	100%
2000-01	5,386	13,523	17,296	1,626	1,986	2,129	7,670	49,617
	11%	27%	35%	3%	4%	4%	15%	100%
2001-02	6,075	13,469	21,010	5,632	5,191	1,219	8,631	61,228
	10%	22%	34%	9%	9%	2%	14%	100%
2002-03	5,791	15,473	32,233	9,436	7,262	1,824	10,765	82,784
	7%	19%	39%	11%	9%	2%	13%	100%
2003-04	7,573	10,292	42,919	10,188	7,643	493	8,152	87,260
	9%	12%	49%	12%	9%	1%	9%	100%
2004-05	6,231	5,718	31,333	6,903	3,411	639	12,497	66,732
	9%	9%	47%	10%	5%	1%	19%	100%
2005-06*	5,787	3,807	50,579	6,419	2,827	717	12,439	82,575
	7%	5%	61%	8%	3%	1%	15%	100%

*Results are preliminary.

SOYBEAN SHIPMENTS 1997-98 to 2005-06



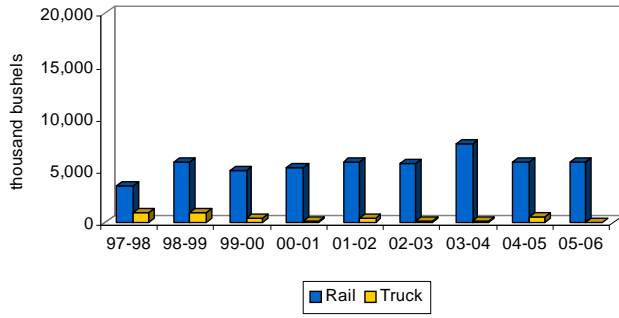
SOYBEAN SHIPMENTS by month, 2004-05 to 2005-06



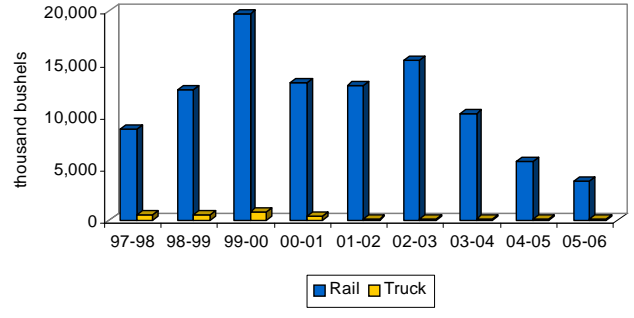
**NORTH DAKOTA SOYBEAN SHIPMENTS
BY RAIL, TRUCK AND DESTINATION
thousand bu.**

YEAR	Minneapolis-St. Paul		Duluth-Superior		PNW		North Dakota		Other Minn. & Wisconsin		Midland & Gulf		Other		TOTAL	
	Rail	Truck	Rail	Truck	Rail	Truck	Rail	Truck	Rail	Truck	Rail	Truck	Rail	Truck	Rail	Truck
1997-98	3,508	887	8,673	537	4,734	17	166	2,125	253	465	770	44	2,717	327	20,821	4,402
	80%	20%	94%	6%	99%	1%	7%	93%	35%	65%	95%	5%	89%	11%	83%	17%
1998-99	5,773	935	12,460	518	3,390	143	51	925	663	461	649	205	2,979	388	25,966	3,576
	86%	14%	96%	4%	96%	4%	5%	95%	59%	41%	76%	24%	88%	12%	88%	12%
1999-00	4,981	434	19,771	802	8,366	27	57	603	608	491	919	31	4,966	611	39,668	2,999
	92%	8%	96%	4%	100%	0%	9%	91%	55%	45%	97%	3%	89%	11%	93%	7%
2000-01	5,268	118	13,200	324	17,079	217	121	1,505	1,111	875	2,124	5	7,118	552	46,021	3,596
	98%	2%	98%	2%	99%	1%	7%	93%	56%	44%	100%	0%	93%	7%	93%	7%
2001-02	5,722	353	12,871	598	20,879	131	607	5,025	3,398	1,793	1,149	70	8,107	524	52,732	8,495
	94%	6%	96%	4%	99%	1%	11%	89%	65%	35%	94%	6%	94%	6%	86%	14%
2002-03	5,666	125	15,329	145	32,233	0	1,862	7,573	5,208	2,054	1,791	32	9,753	1,012	71,842	10,942
	98%	2%	99%	1%	100%	0%	20%	80%	72%	28%	98%	2%	91%	9%	87%	13%
2003-04	7,494	78	10,153	140	42,712	207	1,963	8,225	5,150	2,493	458	35	6,792	1,361	74,721	12,539
	99%	1%	99%	1%	100%	0%	19%	81%	67%	33%	93%	7%	83%	17%	86%	14%
2004-05	5,736	495	5,652	65	31,316	17	964	5,939	1,582	1,829	525	114	10,920	1,578	56,695	10,037
	92%	8%	99%	1%	100%	0%	14%	86%	46%	54%	82%	18%	87%	13%	85%	15%
2005-06	5,777	10	3,707	100	50,554	25	1,689	4,730	1,358	1,469	557	159	10,671	1,767	74,315	8,260
	100%	0%	97%	3%	100%	0%	26%	74%	48%	52%	78%	22%	86%	14%	90%	10%

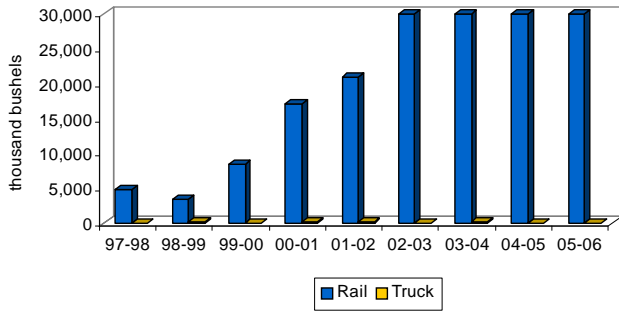
Soybeans to Minneapolis-St. Paul
1997-98 to 2005-06



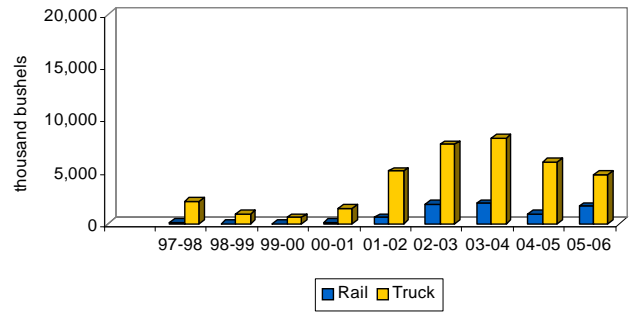
Soybeans to Duluth-Superior
1997-98 to 2005-06



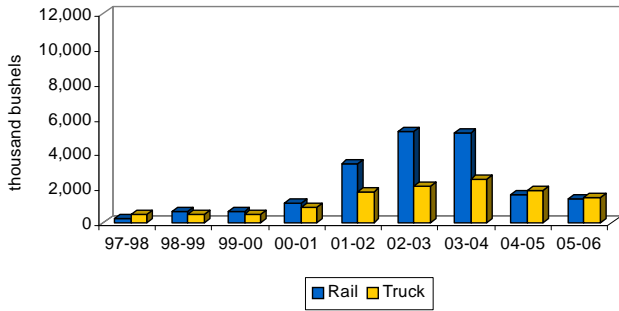
Soybeans to PNW
1997-98 to 2005-06



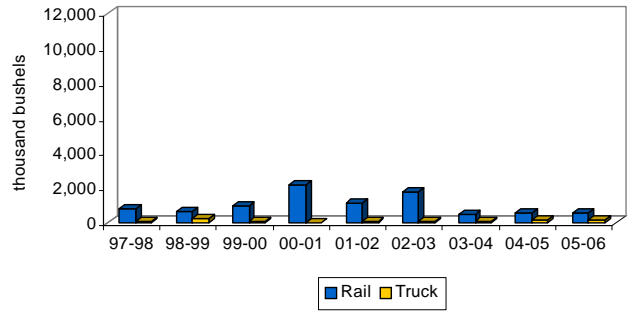
Soybeans to North Dakota
1997-98 to 2005-06



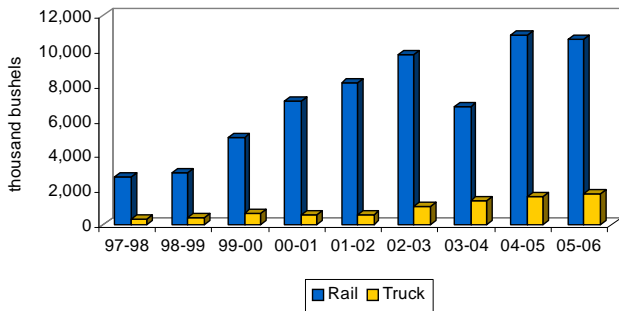
Soybeans to Other Minnesota & Wisconsin
1997-98 to 2005-06



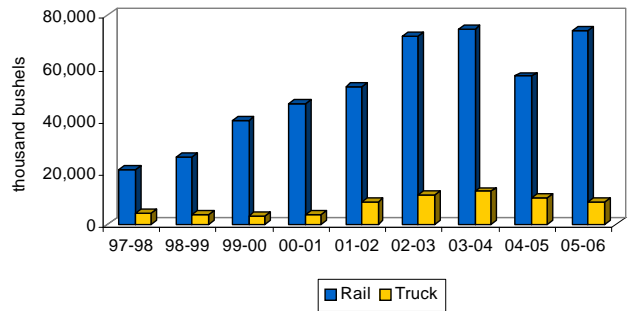
Soybeans to Midland & Gulf
1997-98 to 2005-06



Soybeans to Other Markets
1997-98 to 2005-06

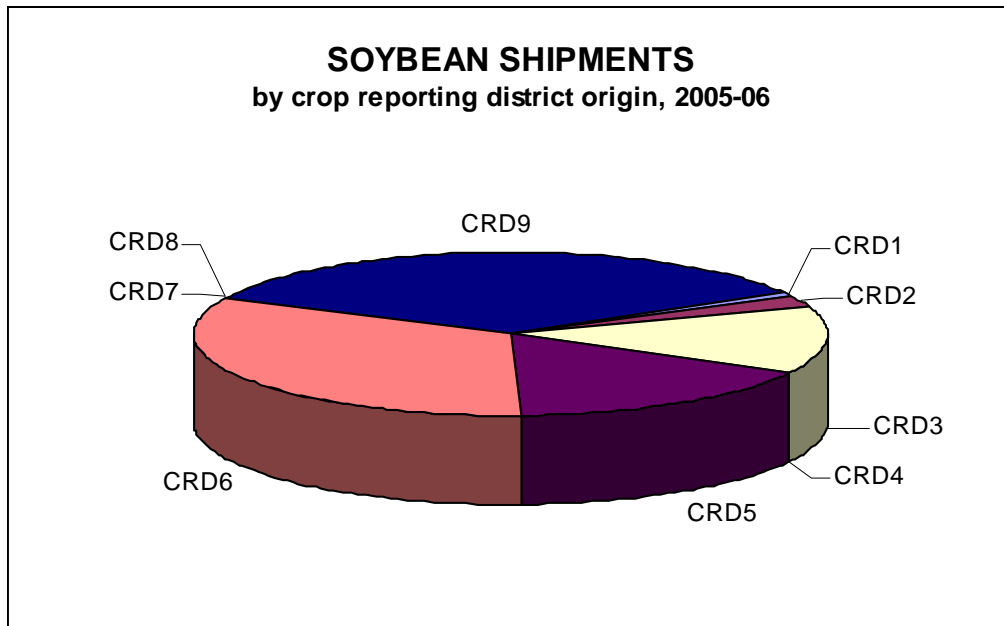


Total Soybean Shipments
1997-98 to 2005-06



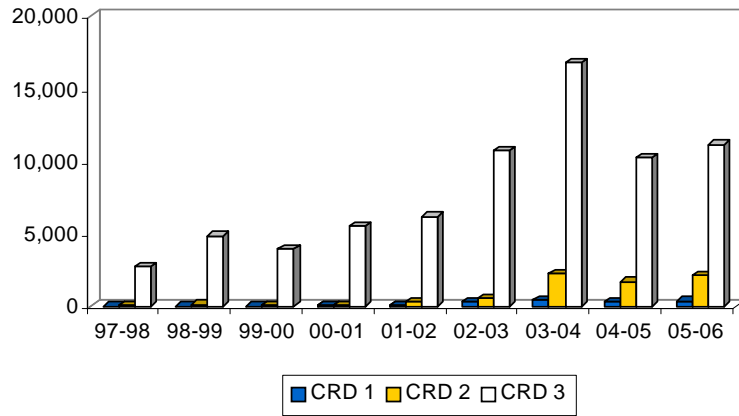
**NORTH DAKOTA SOYBEAN SHIPMENTS
BY CROP REPORTING DISTRICT ORIGIN
thousand bu.**

YEAR	Crop Reporting District									TOTAL
	1	2	3	4	5	6	7	8	9	
1997-98	0	58	2,736	26	247	11,717	3	8	10,429	25,223
	0%	0%	11%	0%	1%	46%	0%	0%	42%	100%
1998-99	0	122	4,844	14	539	13,949	4	93	9,978	29,542
	0%	0%	16%	0%	2%	47%	0%	0%	34%	100%
1999-00	7	33	3,909	6	462	20,765	9	85	17,393	42,668
	0%	0%	9%	0%	1%	49%	0%	0%	41%	100%
2000-01	62	50	5,493	29	1,901	22,468	25	130	19,459	49,617
	0%	0%	11%	0%	4%	45%	0%	0%	39%	100%
2001-02	97	274	6,193	91	4,404	27,417	3	191	22,557	61,228
	0%	0%	10%	0%	7%	45%	0%	0%	37%	100%
2002-03	342	558	10,742	59	9,638	38,991	0	256	22,197	82,784
	0%	1%	13%	0%	12%	47%	0%	0%	27%	100%
2003-04	426	2,241	16,779	84	9,603	37,357	1	76	20,694	87,260
	0%	3%	19%	0%	11%	43%	0%	0%	24%	100%
2004-05	325	1,678	10,231	93	10,301	18,981	0	159	24,964	66,732
	0%	3%	15%	0%	15%	28%	0%	0%	37%	100%
2005-06	352	2,093	11,145	21	13,423	27,030	0	135	28,377	82,575
	0%	3%	13%	0%	16%	33%	0%	0%	34%	100%

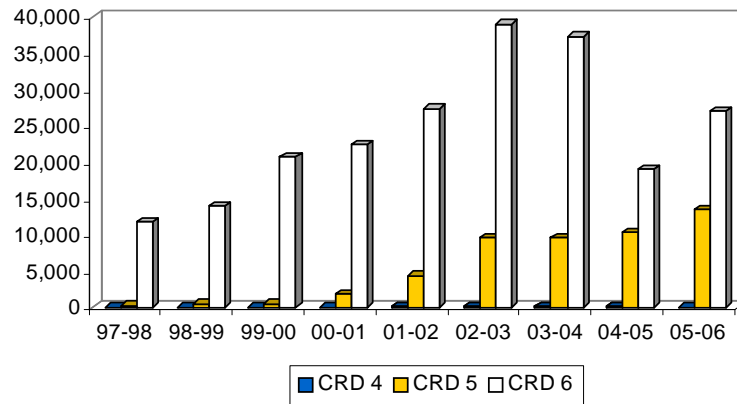


**SOYBEAN SHIPMENTS
BY CROP REPORTING DISTRICT
(Thousand Bushels)**

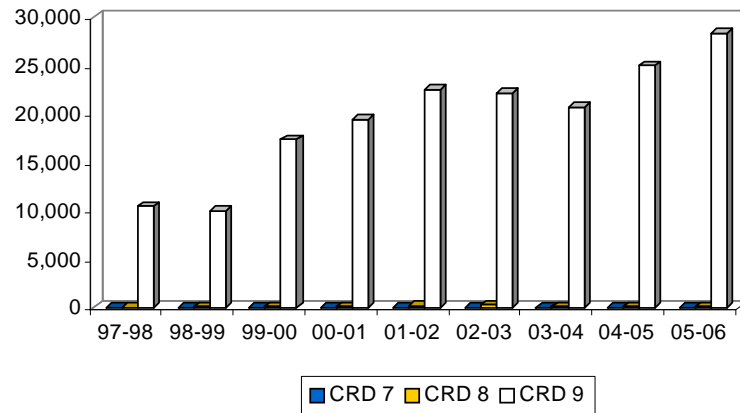
Northern Crop Reporting Districts



Central Crop Reporting Districts



Southern Crop Reporting Districts





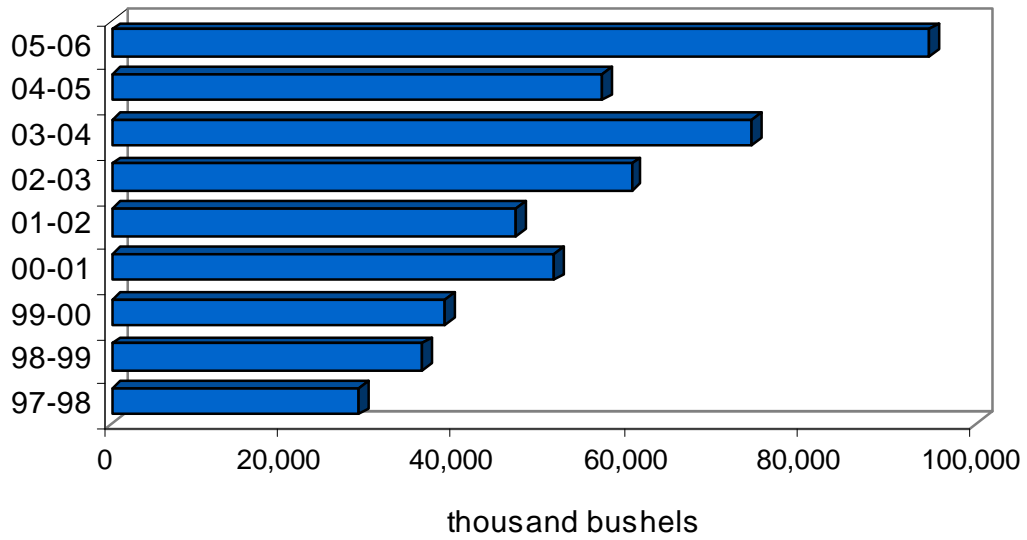
Corn

**NORTH DAKOTA CORN SHIPMENTS
BY DESTINATION
thousand bu.**

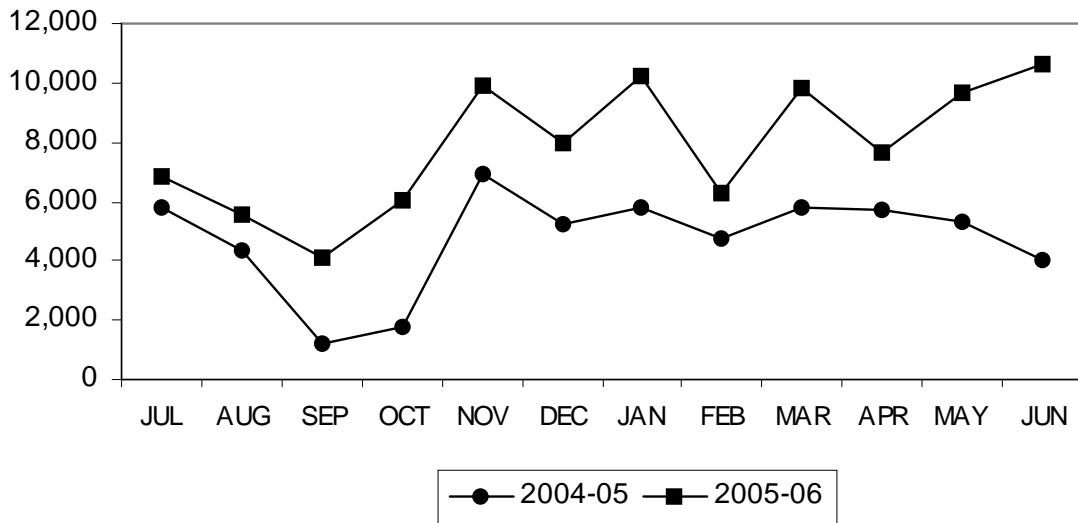
YEAR	Minneapolis- St. Paul	Duluth- Superior	PNW	North Dakota	Other Minn. & Wisconsin	Midland & Gulf	Other	TOTAL
1997-98	3,304	1,074	12,851	2,678	565	2,317	5,853	28,643
	12%	4%	45%	9%	2%	8%	20%	100%
1998-99	1,565	7,012	9,177	8,859	430	1,909	6,934	35,886
	4%	20%	26%	25%	1%	5%	19%	100%
1999-00	3,904	5,577	13,084	4,401	1,145	1,273	9,141	38,525
	10%	14%	34%	11%	3%	3%	24%	100%
2000-01	3,435	3,417	13,604	8,435	2,559	4,585	15,094	51,130
	7%	7%	27%	16%	5%	9%	30%	100%
2001-02	2,793	318	5,447	8,997	2,048	1,658	25,565	46,827
	6%	1%	12%	19%	4%	4%	55%	100%
2002-03	2,872	954	6,488	12,183	1,014	1,303	35,332	60,147
	5%	2%	11%	20%	2%	2%	59%	100%
2003-04*	3,905	8	2,964	14,169	3,407	1,399	21,451	73,981
	5%	0%	40%	19%	5%	2%	29%	100%
2004-05	3,438	0	20,452	13,060	754	493	18,624	56,821
	6%	0%	36%	23%	1%	1%	33%	100%
2005-06*	2,991	0	47,921	16,555	2,366	1,726	23,059	94,619
	3%	0%	51%	17%	3%	2%	24%	100%

*Results are preliminary.

CORN SHIPMENTS 1997-98 to 2005-06



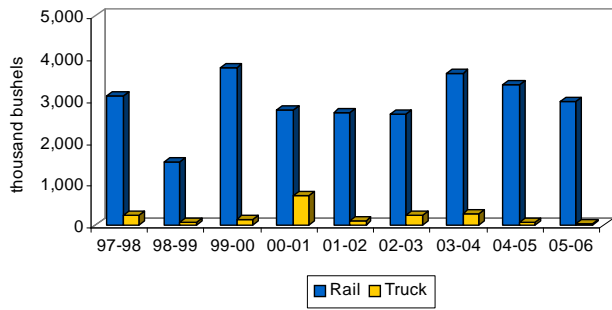
CORN SHIPMENTS by month, 2004-05 to 2005-06



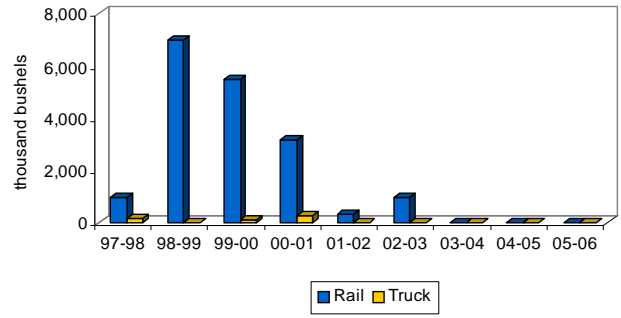
**NORTH DAKOTA CORN SHIPMENTS
BY RAIL, TRUCK AND DESTINATION
thousand bu.**

YEAR	Minneapolis-St. Paul		Duluth-Superior		PNW		North Dakota		Other Minn. & Wisconsin		Midland & Gulf		Other		TOTAL	
	Rail	Truck	Rail	Truck	Rail	Truck	Rail	Truck	Rail	Truck	Rail	Truck	Rail	Truck	Rail	Truck
1997-98	3,081	223	942	132	12,642	209	734	1,944	9	556	1,801	517	3,468	2,385	22,676	5,967
	93%	7%	88%	12%	78%	22%	98%	2%	2%	98%	78%	22%	27%	73%	79%	21%
1998-99	1,493	72	7,001	11	9,150	27	3,154	5,705	135	295	1,626	283	3,746	3,187	26,305	9,580
	95%	5%	100%	0%	100%	0%	36%	64%	31%	69%	85%	15%	54%	46%	73%	27%
1999-00	3,766	138	5,502	76	12,976	108	2,269	2,132	848	297	802	470	3,629	5,512	29,791	8,734
	96%	4%	99%	1%	99%	1%	52%	48%	74%	26%	63%	37%	40%	60%	77%	23%
2000-01	2,747	688	3,179	238	13,531	73	1,749	6,686	2,020	538	3,965	620	11,208	3,886	38,400	12,730
	80%	20%	93%	7%	99%	1%	21%	79%	79%	21%	86%	14%	74%	26%	75%	25%
2001-02	2,687	106	314	4	5,410	37	2,349	6,648	1,424	624	1,223	435	17,627	7,938	31,034	15,793
	96%	4%	99%	1%	99%	1%	26%	74%	70%	30%	74%	26%	69%	31%	66%	34%
2002-03	2,647	225	947	7	628	360	3,429	8,753	494	520	544	759	23,494	11,838	37,684	22,462
	92%	8%	99%	1%	94%	6%	28%	72%	49%	51%	42%	58%	66%	34%	63%	37%
2003-04	3,629	276	0	8	29,359	283	3,682	10,487	2,672	735	945	454	14,344	7,107	54,631	19,350
	93%	7%	0%	100%	99%	1%	26%	74%	78%	22%	68%	32%	67%	33%	74%	26%
2004-05	3,368	70	0	0	20,399	54	4,058	9,001	251	503	124	369	14,168	4,456	42,367	14,453
	98%	2%	0%	0%	100%	0%	31%	69%	33%	67%	25%	75%	76%	24%	75%	25%
2005-06	2,952	40	0	0	47,781	140	4,809	11,745	1,460	906	1,195	532	15,327	7,733	73,523	21,095
	99%	1%	0%	0%	100%	0%	29%	71%	62%	38%	69%	31%	66%	34%	78%	22%

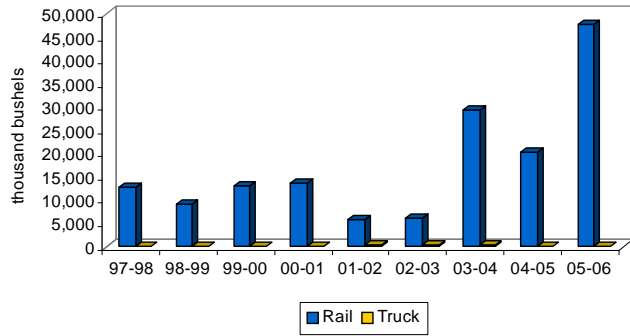
Corn to Minneapolis-St. Paul
1997-98 to 2005-06



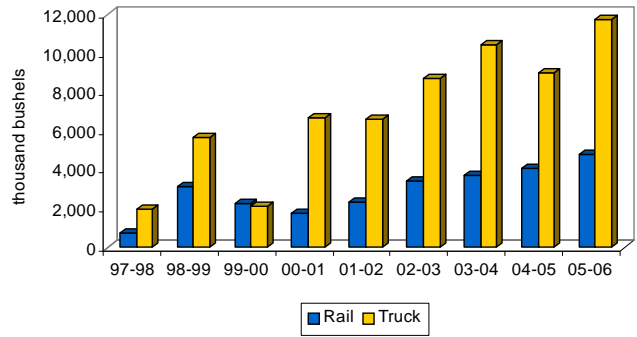
Corn to Duluth-Superior
1997-98 to 2005-06



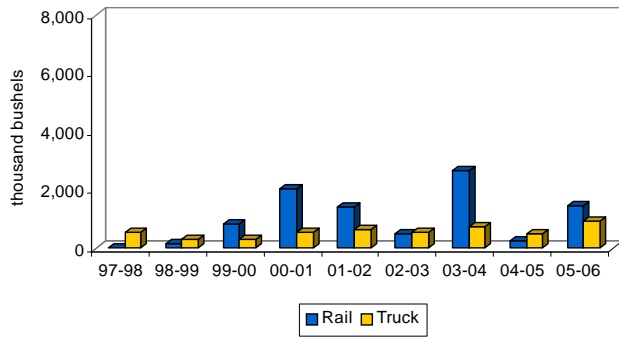
Corn to PNW
1997-98 to 2005-06



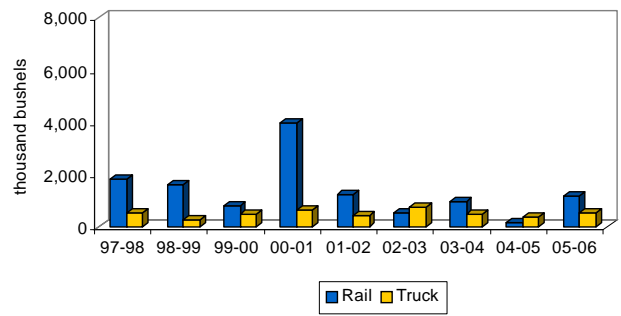
Corn to North Dakota
1997-98 to 2005-06



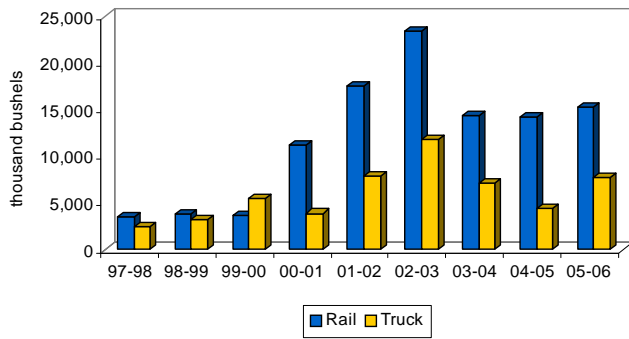
Corn to Other Minnesota & Wisconsin
1997-98 to 2005-06



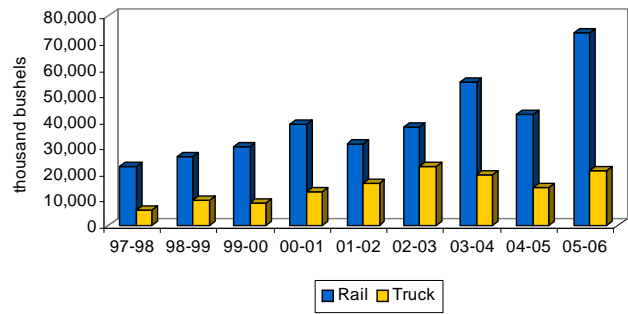
Corn to Midland & Gulf
1997-98 to 2005-06



Corn to Other Markets
1997-98 to 2005-06

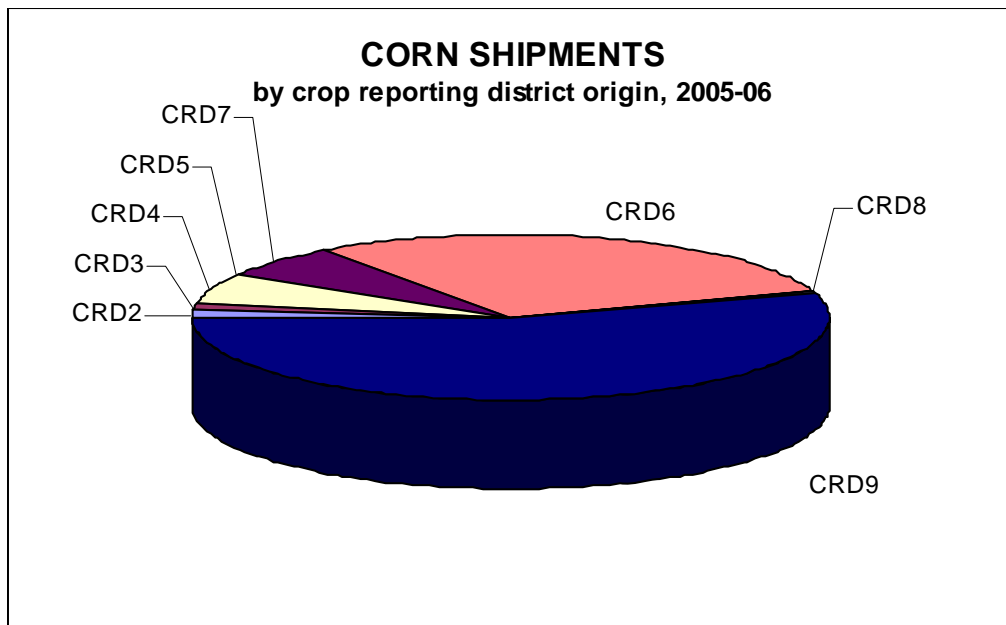


Total Corn Shipments
1997-98 to 2005-06



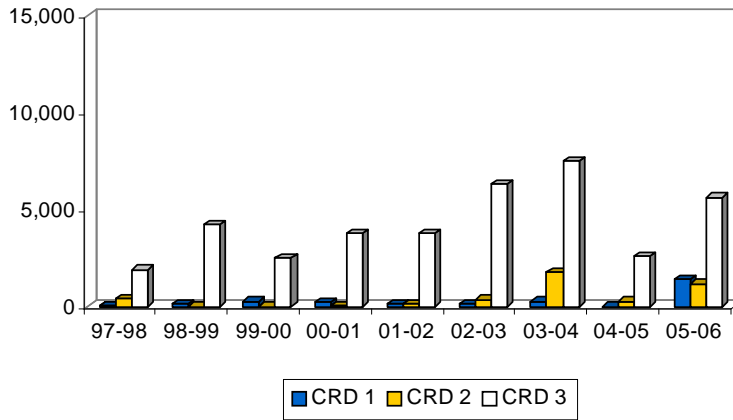
**NORTH DAKOTA CORN SHIPMENTS
BY CROP REPORTING DISTRICT
thousand bu.**

YEAR	Crop Reporting District									TOTAL
	1	2	3	4	5	6	7	8	9	
1997-98	60	387	1,904	7	72	7,553	5	NA	18,655	28,643
	0%	1%	7%	0%	0%	26%	0%	0%	65%	100%
1998-99	161	15	4,215	2	398	12,477	2	NA	18,616	35,886
	0%	0%	12%	0%	1%	35%	0%	NA	53%	100%
1999-00	283	18	2,438	NA	429	9,365	0	NA	25,992	38,525
	1%	0%	6%	NA	1%	24%	0%	NA	67%	100%
2000-01	222	35	3,751	18	919	14,284	NA	28	31,872	51,130
	0%	0%	7%	0%	2%	28%	NA	0%	62%	100%
2001-02	153	124	3,782	20	989	9,327	16	199	32,218	46,827
	0%	0%	8%	0%	2%	20%	0%	0%	69%	100%
2002-03	120	361	6,304	14	1,191	18,600	2	31	33,524	60,147
	0%	1%	10%	0%	2%	31%	0%	0%	56%	100%
2003-04	272	1,774	7,510	175	4,001	28,431	3	230	31,586	73,981
	0%	2%	10%	0%	5%	38%	0%	0%	43%	100%
2004-05	9	279	2,614	4	887	12,576	0	43	40,371	56,821
	0%	0%	5%	0%	2%	22%	0%	0%	71%	100%
2005-06	1,391	1,200	5,649	17	5,855	28,326	17	439	51,725	94,619
	1%	1%	6%	0%	6%	30%	0%	0%	55%	100%

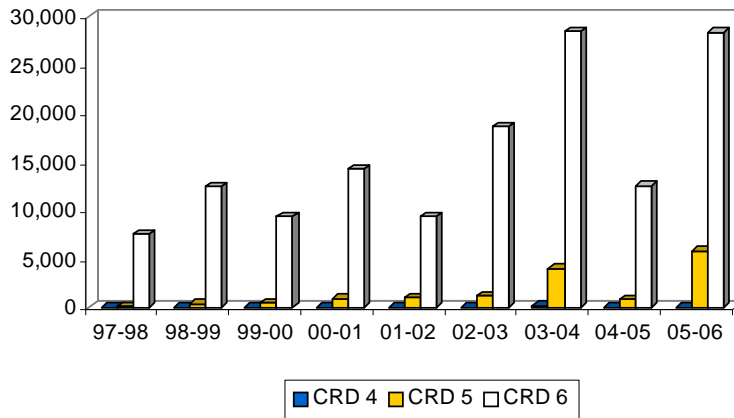


**CORN SHIPMENTS
BY CROP REPORTING DISTRICT
(Thousand Bushels)**

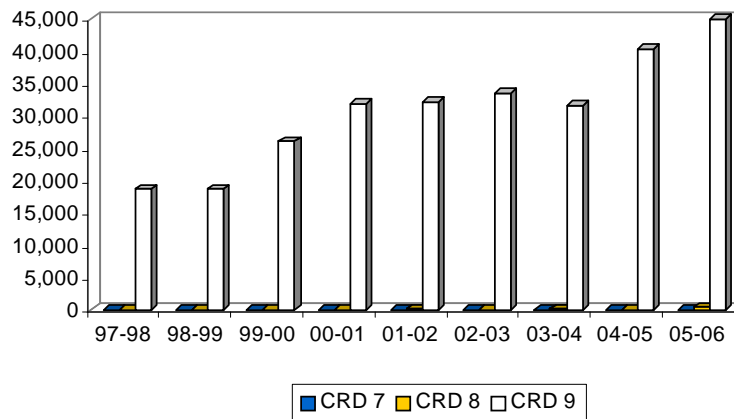
Northern Crop Reporting Districts



Central Crop Reporting Districts



Southern Crop Reporting Districts





CANOLA

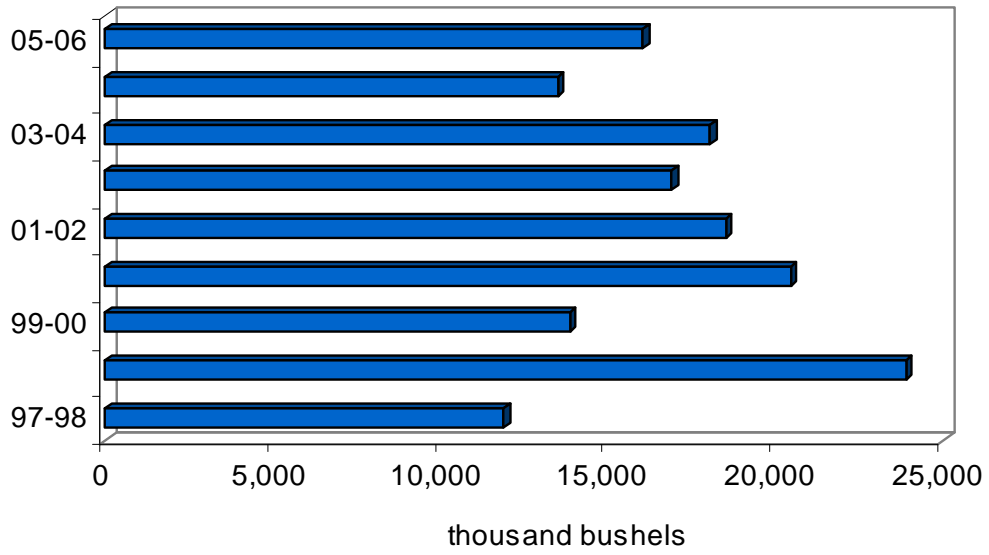
**NORTH DAKOTA CANOLA SHIPMENTS
BY DESTINATION
thousand bu.**

YEAR	Minneapolis- St. Paul	Duluth- Superior	PNW	North Dakota	Other Minn. & Wisconsin	Midland & Gulf	Other	TOTAL
1997-98	157	521	4	8,595	36	18	2,539	11,870
	1%	4%	0%	72%	0%	0%	21%	100%
1998-99	465	3,371	0	14,874	109	2	5,092	23,913
	2%	14%	0%	62%	0%	0%	21%	100%
1999-00	429	111	38	10,547	19	3	2,879	14,026
	3%	1%	0%	75%	0%	0%	21%	100%
2000-01	794	594	56	13,225	171	14	5,613	20,468
	4%	3%	0%	65%	1%	0%	27%	100%
2001-02	309	53	11	11,183	58	29	6,885	18,527
	2%	0%	0%	60%	0%	0%	37%	100%
2002-03	1,721	37	0	9,404	92	0	5,646	16,900
	10%	0%	0%	56%	1%	0%	33%	100%
2003-04	1,469	11	48	9,491	29	0	7,027	18,075
	8%	0%	0%	53%	0%	0%	39%	100%
2004-05	453	7	0	9,374	103	272	3,297	13,505
	3%	0%	0%	69%	1%	2%	24%	100%
2005-06*	786	1	42	10,666	21	191	4,359	16,066
	5%	0%	0%	66%	0%	1%	27%	100%

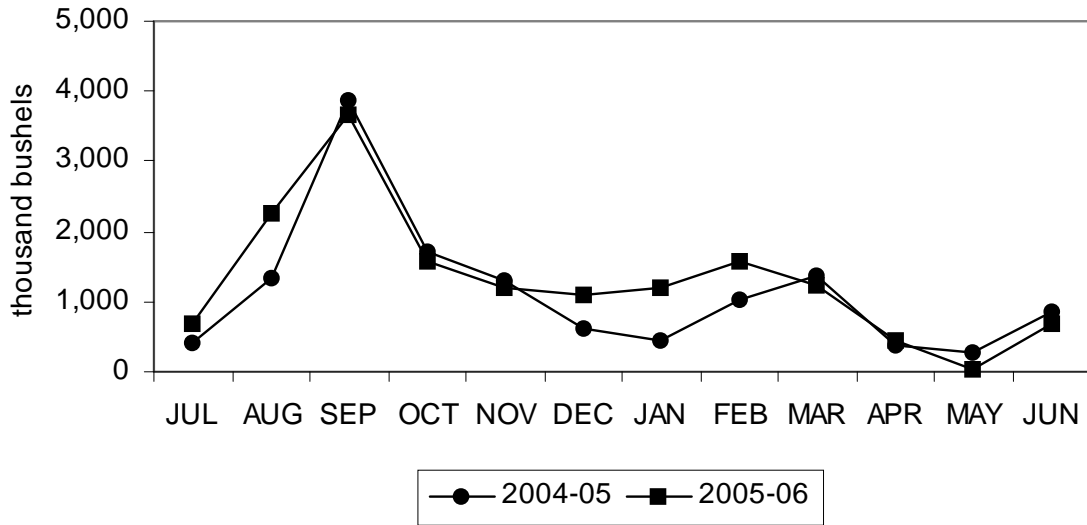
*Results are preliminary.

CANOLA SHIPMENTS

1997-98 to 2005-06



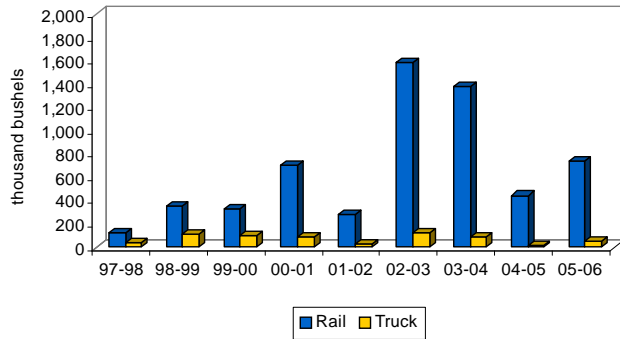
CANOLA SHIPMENTS by month, 2004-05 to 2005-06



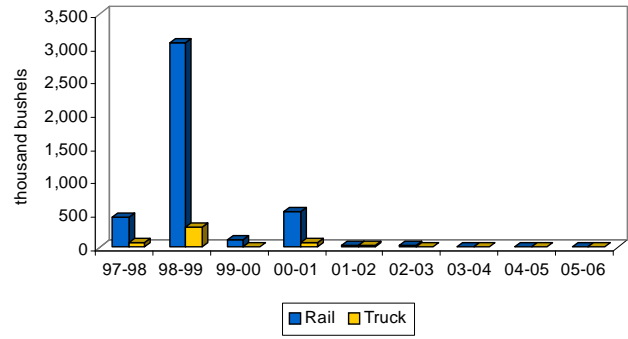
**NORTH DAKOTA CANOLA SHIPMENTS
BY RAIL, TRUCK AND DESTINATION
thousand bu.**

YEAR	Minneapolis-St. Paul		Duluth-Superior		PNW		North Dakota		Other Minn. & Wisconsin		Midland & Gulf		Other		TOTAL	
	Rail	Truck	Rail	Truck	Rail	Truck	Rail	Truck	Rail	Truck	Rail	Truck	Rail	Truck	Rail	Truck
1997-98	123	34	452	69	0	4	109	8,486	20	16	0	18	365	2,174	1,070	10,800
	78%	22%	87%	13%	0%	100%	1%	99%	57%	43%	0%	100%	14%	86%	9%	91%
1998-99	352	113	3,065	306	0	0	1,108	13,766	109	0	0	2	961	4,130	5,595	18,318
	76%	24%	91%	9%	0%	0%	7%	93%	100%	0%	8%	92%	19%	81%	23%	77%
1999-00	335	94	106	6	0	38	1,739	8,807	0	19	0	3	320	2,559	2,500	11,527
	78%	22%	95%	5%	0%	100%	16%	84%	0%	100%	0%	100%	11%	89%	18%	82%
2000-01	706	89	534	60	14	42	3,642	9,584	126	45	14	0	2,382	3,231	7,417	13,051
	89%	11%	90%	10%	25%	75%	28%	72%	74%	26%	100%	0%	42%	58%	36%	64%
2001-02	281	28	35	18	0	11	3,329	7,854	52	6	20	8	1,893	4,992	5,609	12,918
	91%	9%	66%	34%	0%	100%	30%	70%	89%	11%	71%	29%	27%	73%	30%	70%
2002-03	1,592	129	36	2	0	0	2,136	7,268	3	88	0	0	1,370	4,276	5,136	11,763
	92%	8%	95%	5%	0%	0%	23%	77%	4%	96%	0%	0%	26%	74%	30%	70%
2003-04	1,384	85	11	0	0	48	1,499	7,992	0	29	0	0	1,750	5,277	4,644	13,432
	94%	6%	100%	0%	0%	100%	16%	84%	0%	100%	0%	0%	25%	75%	26%	74%
2004-05	444	9	7	0	0	0	1,540	7,834	101	2	271	1	1,097	2,200	3,459	10,045
	98%	2%	100%	0%	0%	0%	16%	84%	98%	2%	100%	0%	33%	67%	26%	74%
2005-06	738	48	0	1	40	2	1,813	8,853	20	1	190	1	1,220	3,139	4,021	12,045
	94%	6%	0%	100%	96%	4%	17%	83%	95%	5%	99%	1%	28%	72%	25%	75%

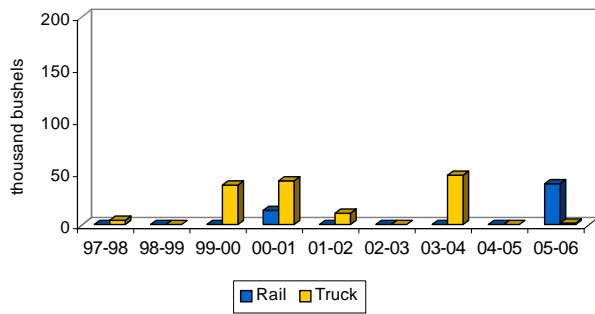
**Canola to Minneapolis-St. Paul
1997-98 to 2005-06**



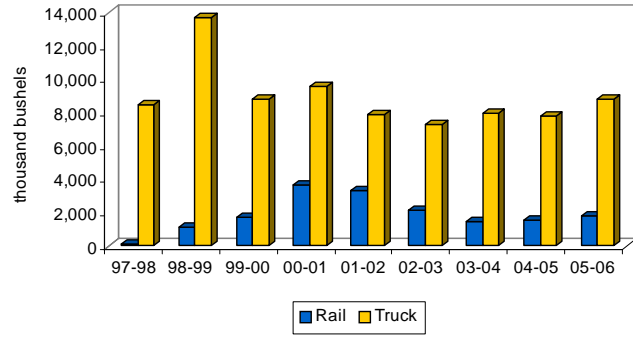
**Canola to Duluth-Superior
1997-98 to 2005-06**



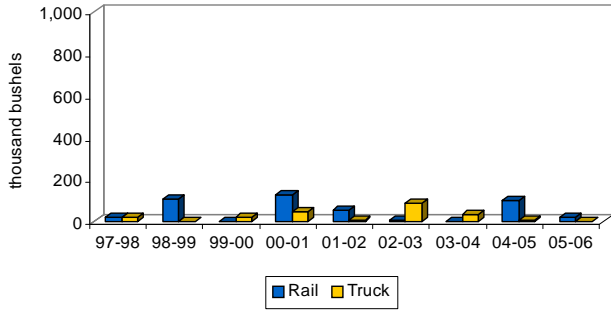
**Canola to PNW
1997-98 to 2005-06**



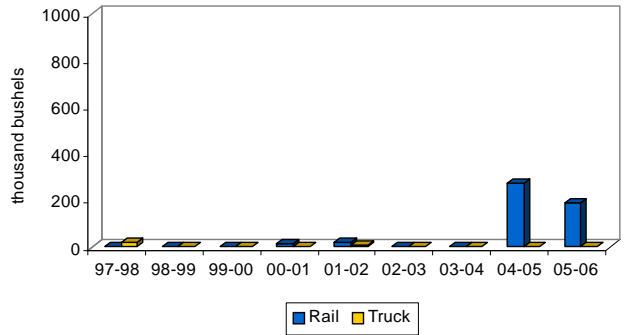
**Canola to North Dakota
1997-98 to 2005-06**



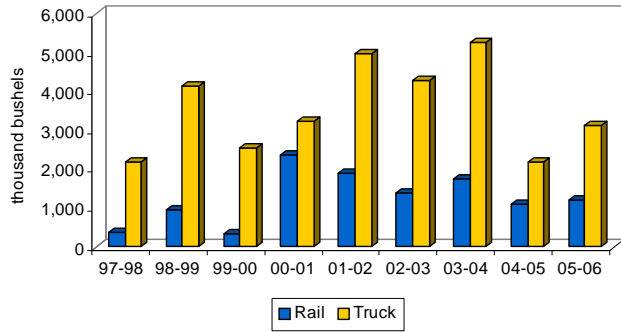
**Canola to Other Minnesota & Wisconsin
1997-98 to 2005-06**



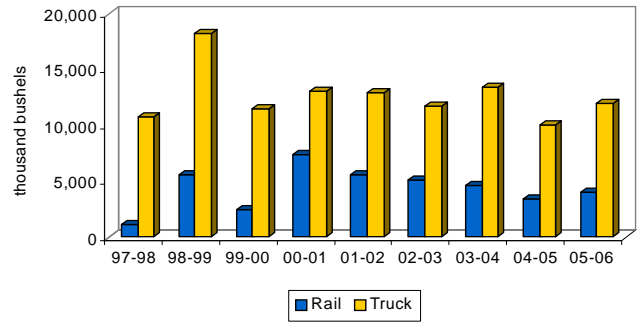
**Canola to Midland & Gulf
1997-98 to 2005-06**



**Canola to Other Markets
1997-98 to 2005-06**

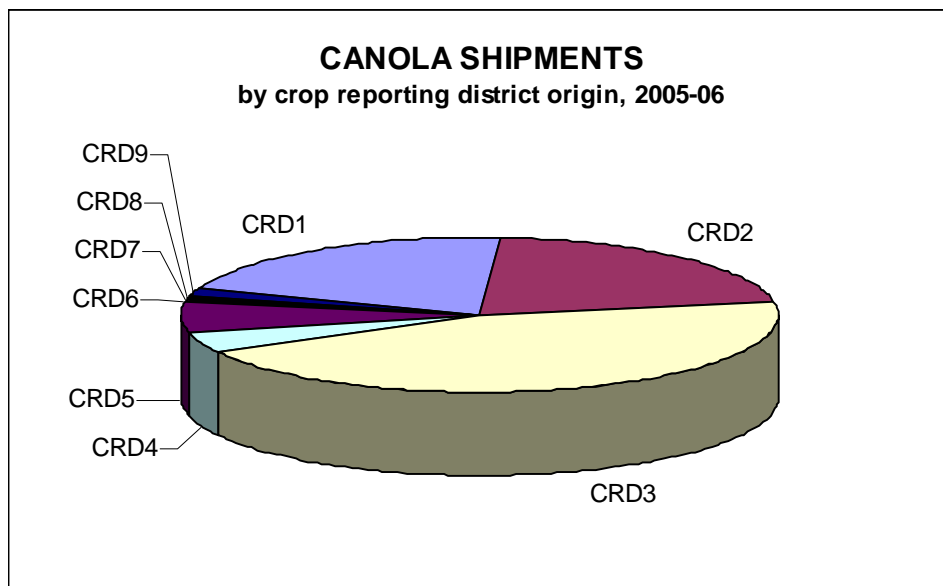


**Total Canola Shipments
1997-98 to 2005-06**



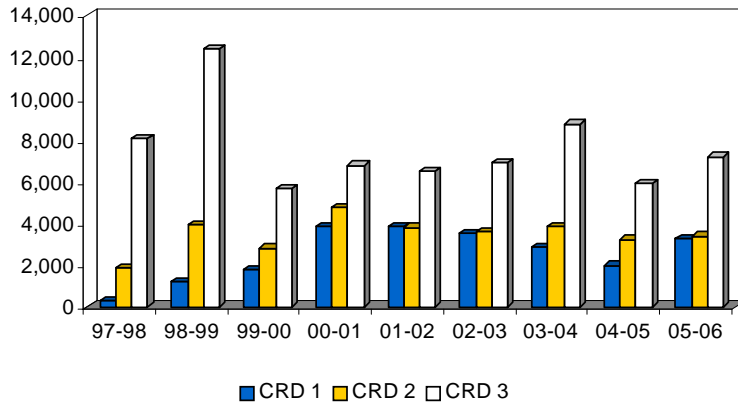
**NORTH DAKOTA CANOLA SHIPMENTS
BY CROP REPORTING DISTRICT
thousand bu.**

YEAR	Crop Reporting District									TOTAL
	1	2	3	4	5	6	7	8	9	
1997-98	313	1,864	8,055	286	1,054	100	43	2	153	11,870
	3%	15%	68%	2%	9%	1%	0%	0%	1%	100%
1998-99	1,179	3,942	12,388	786	2,047	2,592	163	469	345	23,913
	5%	16%	52%	3%	9%	11%	1%	2%	1%	100%
1999-00	1,802	2,811	5,653	865	1,843	531	225	88	208	14,026
	13%	20%	40%	6%	13%	4%	2%	1%	1%	100%
2000-01	3,846	4,780	6,799	1,717	1,704	462	409	182	569	20,468
	19%	23%	33%	8%	8%	2%	2%	1%	3%	100%
2001-02	3,857	3,800	6,494	1,569	1,576	216	462	300	253	18,527
	21%	21%	35%	8%	9%	1%	2%	2%	1%	100%
2002-03	3,515	3,580	6,926	1,390	1,136	141	139	10	62	16,900
	21%	21%	41%	8%	7%	1%	1%	0%	0%	100%
2003-04	2,873	3,862	8,768	1,104	1,116	79	157	61	54	18,075
	16%	21%	49%	6%	6%	0%	1%	0%	0%	100%
2004-05	1,978	3,247	5,917	1,105	894	253	44	37	30	13,505
	15%	24%	44%	8%	7%	2%	0%	0%	0%	100%
2005-06	3,283	3,408	7,195	661	1,055	84	75	20	285	16,066
	20%	21%	45%	4%	7%	1%	0%	0%	2%	100%

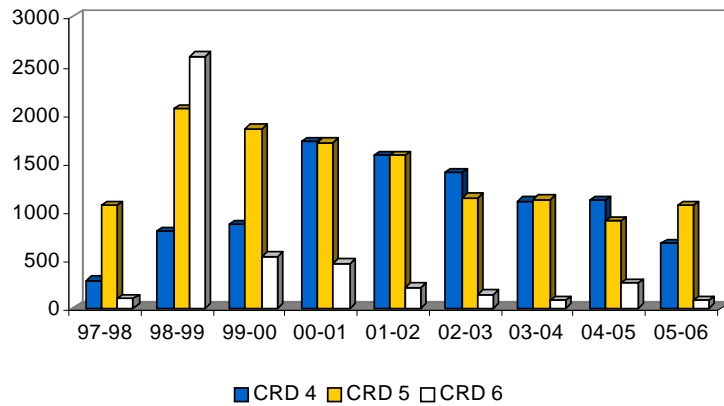


**CANOLA SHIPMENTS
BY CROP REPORTING DISTRICT
(Thousand Bushels)**

Northern Crop Reporting Districts



Central Crop Reporting Districts



Southern Crop Reporting Districts

