
North Dakota Grain and Oilseed Transportation Statistics 2001-02

Kimberly Vachal

Associate Research Fellow

Upper Great Plains Transportation Institute
North Dakota State University
Fargo, North Dakota

in cooperation with

North Dakota Wheat Commission

Bismarck, ND

and

North Dakota Public Service Commission

Bismarck, ND



With special thanks to the North Dakota grain elevator industry who provide these data monthly.

Preface

The 2001-02 North Dakota Grain and Oilseed Transportation Statistics Report was prepared by Kimberly Vachal, Upper Great Plains Transportation Institute. The author gratefully acknowledges the desktop publishing assistance of Beverly Trittin in constructing this report.

This report represents a continuation of analysis concerned with the patterns and methods of distributing grains and oilseeds from North Dakota. This series began with the analysis of 1956-57 data and was published in Agricultural Economics Reports 15, 17, 44, 56, and 86 and Agricultural Experiment Station Bulletin 462. The compilation and analysis of data for the year 1967-68 in this series was assumed by the Upper Great Plains Transportation Institute. Also, the data representing the 1967-68 period were the first results of the requirements of the North Dakota Public Service Commission that all North Dakota elevators report monthly movements of grains and oilseeds by truck and rail. Prior to 1967-68, these data had been estimated from questionnaires completed by a sample of country elevators.

North Dakota State Wheat Commission

Maynard Satrom, Vice Chair
Harlan Klein, Elgin
Don Paulson, Coleharbor

Charlie Rhode, Langdon
Louis Kuster, Stanley
Larry Lee, Velva

Neal Fisher, Administrator
Jim Peterson, Marketing Director
Judge Barth, Marketing Specialist
Ellen Huber, Public Information Specialist

www.ndwheat.com

North Dakota Public Service Commission

Commissioners:

Susan Wefald, President
Leo M. Reinbold
Tony Clark

Executive Secretary:

Jon Mielke

CONTENTS

	Page
North Dakota Grain and Oilseed Transportation Statistics	i
<i>Objective of Report</i>	i
<i>Scope of Report</i>	i
<i>Source of Data</i>	i
<i>Organization of the Remainder of the Report</i>	i
North Dakota Crop Reporting Districts and Counties.	ii
Total Grain and Oilseed Shipments	1
Hard Red Spring Wheat	13
Durum	21
Barley	29
Sunflower	37
Oats	45
Soybeans	53
Corn	61
Canola	69

NORTH DAKOTA GRAIN AND OILSEED TRANSPORTATION STATISTICS 2001-02

Objective of Report

This report represents a continuation of analysis concerned with the patterns and methods of distributing grain from North Dakota. The collection and compilation of this type of data began in 1956-57. The objectives of this report, like prior reports, are to provide the necessary database for identifying trends in the distribution of grain and oilseeds from North Dakota.

Scope of Report

Data are tabulated according to major characteristics which typically describe commodity flows. The major shipment characteristics considered are destination, mode, origin, time and commodity. These characteristics are defined as follows:

- **Destination:** Minneapolis-St. Paul, Duluth-Superior, Pacific Northwest (ID, OR, WA), Other Minnesota/Wisconsin, Midland & Gulf states (AR, AZ, CA, CO, IA, KS, LA, MO, MT, NE, NM, NV, OK, SD, TX, and WY), North Dakota and other destinations.
- **Mode:** Rail or truck. Rail includes Commodity Credit Corporation shipments.
- **Origin:** The nine crop reporting districts in North Dakota (Figure 1).
- **Time:** By month, from July 2001 to June 2002, and previous years.
- **Commodity:** Hard red spring wheat, durum, barley, sunflower, oats, soybeans, corn, and canola.

Source of Data

The data used to analyze North Dakota grain distribution patterns for the period July 2001 through June 2002 were obtained from all country elevators in North Dakota. The data source is the North Dakota Public Service Commission's "Grain Movement Report." Every country elevator in North Dakota is required under state statute to assemble and submit a "Grain Movement Report" to the Public Service Commission on a monthly basis.

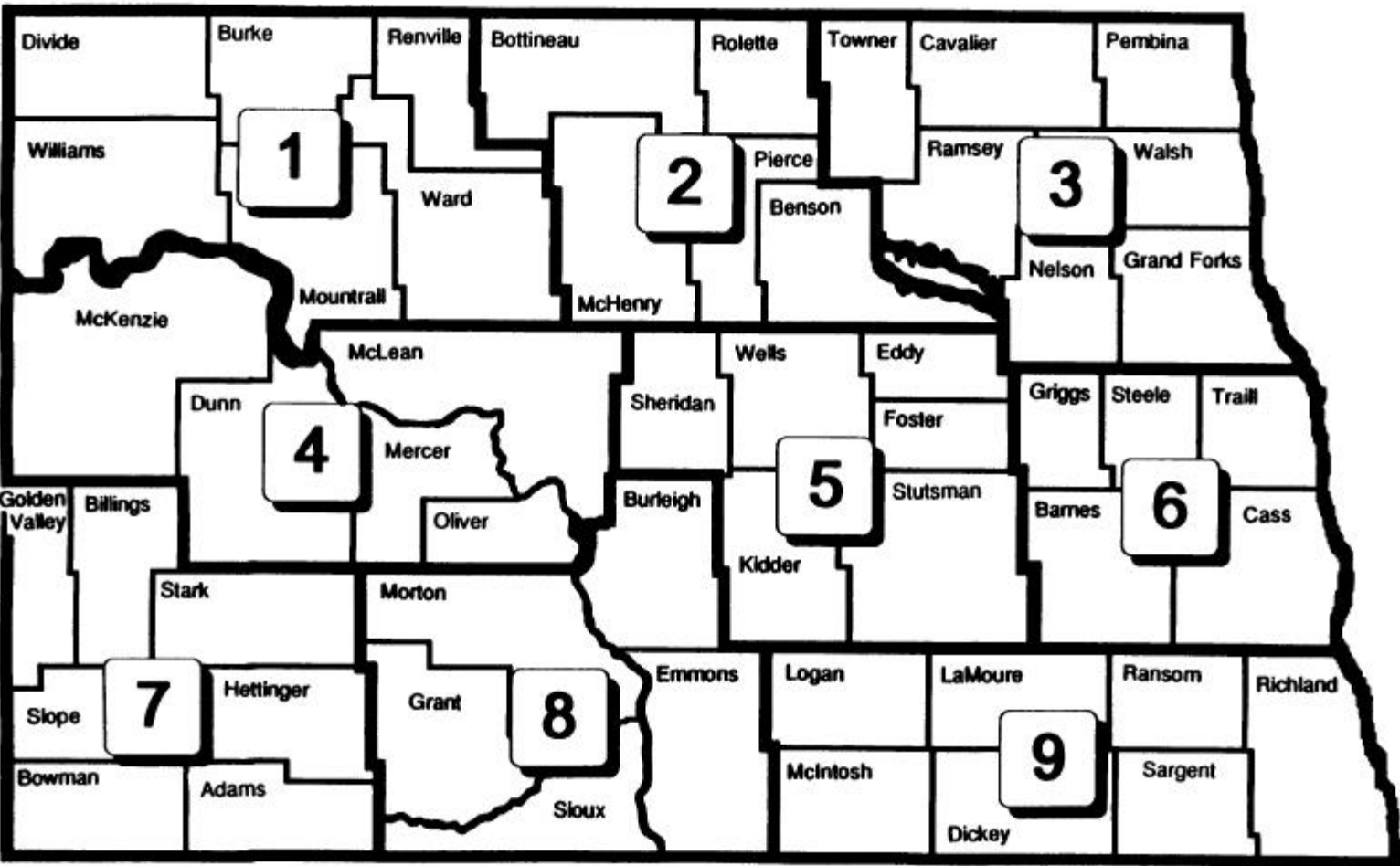
Organization of the Remainder of the Report

The same general commodity flow characteristics are considered in this report as in previous years' reports. Flow patterns for each type of grain are described in separate sections in the following order: (1) Total Grain and Oilseed Shipments, (2) Hard Red Spring Wheat, (3) Durum, (4) Barley, (5) Sunflower, (6) Oats, (7) Soybeans, (8) Corn, and (9) Canola.

Some small inconsistencies in totals may be noted when comparing tables and graphs due to rounding error.

2001-02 totals are preliminary, representing 99 percent of the required reports.

North Dakota Crop Reporting Districts and Counties

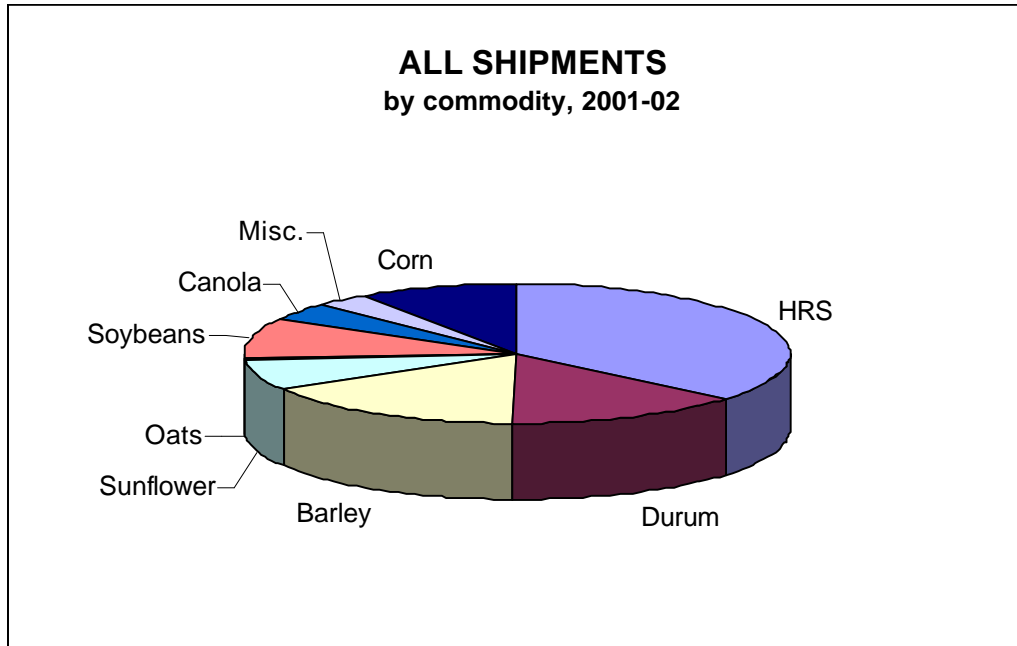




***Total Grain and
Oilseed Shipments***

NORTH DAKOTA GRAIN AND OILSEED SHIPMENTS
1993-94 to 2001-02
 thousand bu.

YEAR	HRS	Durum	Barley	Sunflower	Oats	Soybeans	Canola	Misc.	Corn	TOTAL
1993-94	255,377 49%	84,740 16%	111,087 21%	26,582 5%	11,676 2%	9,898 2%	N/A	14,708 2%	8,167 2%	522,235 100%
1994-95	223,886 42%	69,562 13%	120,251 23%	49,921 9%	10,262 2%	14,595 3%	N/A	20,359 3%	24,398 5%	533,234 100%
1995-96	264,379 46%	70,875 13%	103,590 18%	42,338 7%	7,576 1%	20,704 4%	N/A	19,957 3%	35,722 6%	565,141 100%
1996-97	219,045 43%	67,764 13%	107,821 21%	34,935 7%	39,190 7%	21,097 4%	N/A	29,319 6%	25,187 5%	509,087 100%
1997-98	179,327 39%	57,551 13%	94,006 21%	49,803 11%	3,128 1%	25,223 6%	5,935 1%	14,047 3%	28,643 6%	457,646 100%
1998-99	167,713 36%	55,372 12%	90,892 20%	52,320 11%	2,273 1%	29,526 6%	11,941 3%	20,018 4%	35,886 8%	465,941 100%
1999-00	177,450 38%	64,056 14%	74,142 16%	42,052 9%	5,034 1%	42,668 9%	14,026 3%	15,830 3%	38,525 8%	473,782 100%
2000-01	200,068 37%	77,025 14%	84,531 16%	38,194 7%	4,031 1%	49,617 9%	20,468 3%	17,958 4%	51,130 9%	543,021 100%
2001-02	192,457 39%	60,845 12	67,994 14%	31,758 6%	6,299 1%	60,153 12%	18,416 4%	18,181 4%	46,079 9%	502,182 100%

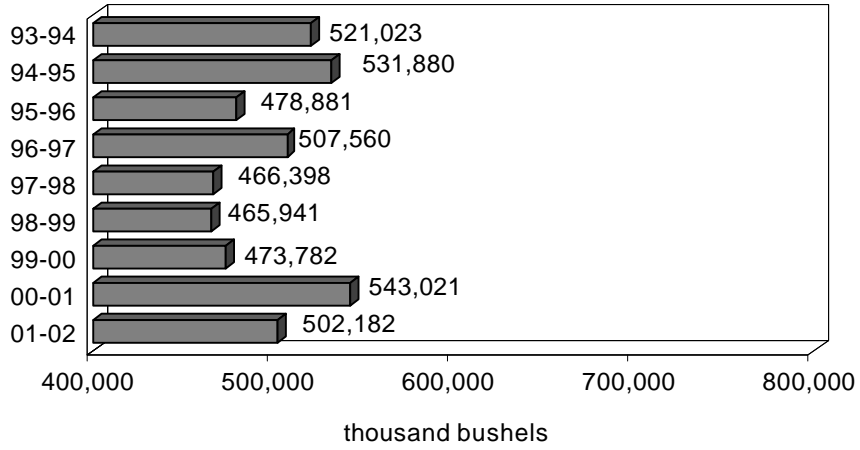


**NORTH DAKOTA GRAIN AND OILSEED SHIPMENTS
BY DESTINATION
1993-94 to 2001-02
thousand bu.**

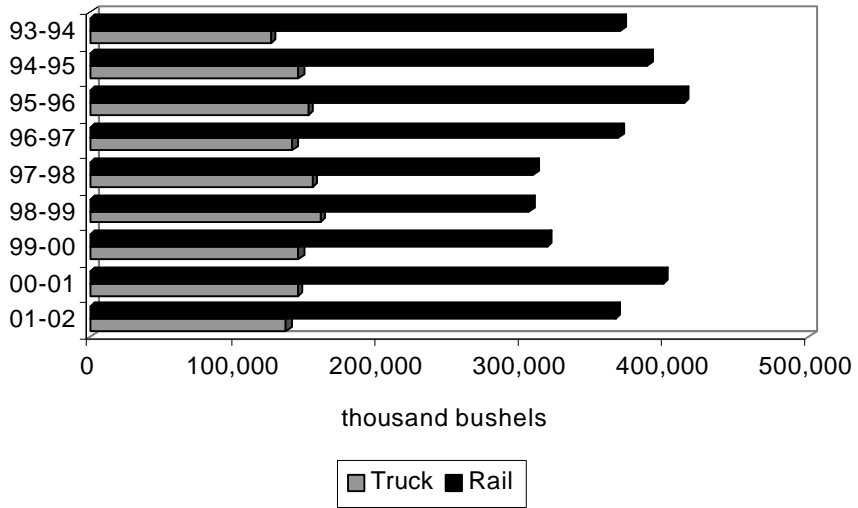
YEAR	Minneapolis- St. Paul	Duluth- Superior	PNW	North Dakota	Other Minn. & Wisconsin	Midland & Gulf	Other	TOTAL
1993-94	125,542 28%	66,452 15%	82,949 18%	54,370 12%	43,357 10%	71,516 14%	78,047 17%	522,235 100%
1994-95	135,193 28%	62,920 13%	82,823 17%	77,563 16%	39,598 8%	52,804 10%	82,332 17%	533,233 100%
1995-96	143,389 25%	46,572 8%	104,130 18%	76,640 14%	34,375 6%	62,905 11%	97,131 17%	565,142 100%
1996-97	131,382 29%	62,308 14%	66,838 14%	77,047 17%	27,170 6%	56,208 11%	96,222 21%	517,176 100%
1997-98	114,720 25%	65,502 14%	62,415 13%	85,980 19%	25,754 6%	42,837 9%	65,739 14%	462,946 100%
1998-99	131,104 28%	58,764 13%	42,215 9%	96,959 21%	26,790 6%	35,350 8%	74,785 16%	465,941 100%
1999-00	120,779 25%	68,330 14%	47,327 10%	89,052 19%	24,628 5%	39,695 8%	83,975 18%	473,782 100%
2000-01	130,574 24%	57,280 11%	70,930 13%	93,763 17%	31,870 6%	60,258 11%	98,341 18%	543,021 100%
2001-02	114,302 23%	53,573 11%	80,150 16%	84,528 17%	33,134 7%	40,997 8%	95,510 19%	502,182 100%

*Results are preliminary.

**ALL COMMODITY SHIPMENTS
1993-94 TO 2001-02**



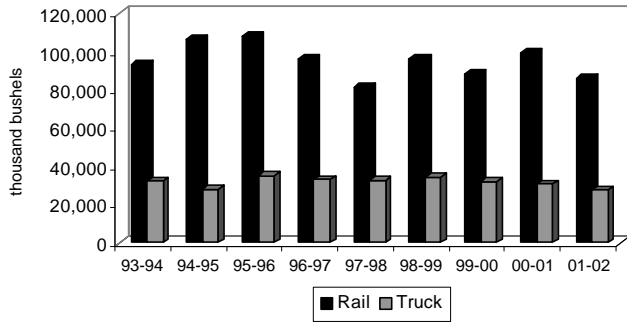
**ALL COMMODITY SHIPMENTS
1993-94 TO 2001-02**



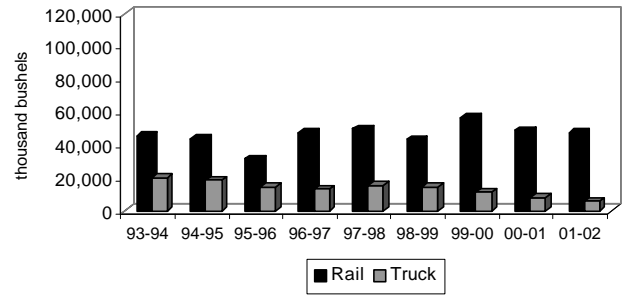
**NORTH DAKOTA GRAIN AND OILSEED SHIPMENTS
BY RAIL, TRUCK AND DESTINATION
thousand bu.**

YEAR	Minneapolis-St. Paul		Duluth-Superior		PNW		North Dakota		Other Minn. & Wisconsin		Midland & Gulf		Other		TOTAL	
	Rail	Truck	Rail	Truck	Rail	Truck	Rail	Truck	Rail	Truck	Rail	Truck	Rail	Truck	Rail	Truck
1993-94	93,217	32,325	46,027	20,425	80,290	2,659	13,529	40,841	35,411	7,946	64,894	6,622	62,827	15,220	396,197	126,038
	69%	31%	74%	26%	97%	3%	25%	75%	82%	18%	91%	9%	80%	20%	76%	24%
1994-95	107,058	28,135	43,897	19,023	79,837	2,986	18,944	58,619	30,070	9,528	45,454	7,350	62,358	19,974	387,618	145,615
	70%	30%	79%	21%	96%	4%	24%	76%	76%	24%	86%	14%	76%	24%	73%	27%
1995-96	108,390	34,999	31,650	14,922	100,810	3,320	12,341	64,299	24,589	9,786	56,342	6,563	79,176	17,955	413,298	151,844
	68%	32%	76%	24%	97%	3%	16%	84%	72%	28%	90%	10%	82%	18%	73%	27%
1996-97	97,980	33,402	48,835	13,473	65,108	1,730	12,725	64,322	18,489	8,681	50,398	5,810	80,421	15,801	373,956	143,220
	78%	22%	75%	25%	97%	3%	17%	83%	68%	32%	90%	10%	84%	16%	72%	28%
1997-98	81,749	32,971	49,968	15,534	59,906	2,509	13,046	72,934	14,527	11,227	37,439	5,398	51,562	14,177	308,196	154,750
	76%	24%	71%	29%	96%	4%	15%	85%	56%	44%	87%	13%	78%	22%	67%	33%
1998-99	96,544	34,560	43,691	15,072	40,421	1,794	19,605	77,353	15,444	11,345	30,849	4,502	58,996	15,790	305,548	160,393
	74%	26%	74%	26%	96%	4%	20%	80%	58%	42%	87%	13%	79%	21%	66%	34%
1999-00	88,522	32,257	56,703	11,626	45,692	1,635	19,002	70,050	14,795	9,832	36,440	3,255	65,212	18,763	326,368	147,414
	73%	27%	83%	17%	97%	3%	21%	79%	60%	40%	92%	8%	78%	22%	69%	31%
2000-01	99,799	30,796	48,947	8,332	69,382	1,547	21,243	72,520	21,332	10,538	56,196	4,062	81,804	16,537	398,681	144,340
	76%	24%	85%	15%	98%	2%	23%	77%	67%	33%	93%	7%	83%	17%	73%	27%
2001-02	86,520	27,773	47,567	6,007	78,648	1,502	19,869	64,659	20,895	12,239	37,646	3,351	74,523	20,987	365,676	136,506
	76%	24%	89%	11%	98%	2%	24%	76%	63%	37%	92%	8%	78%	22%	73%	27%

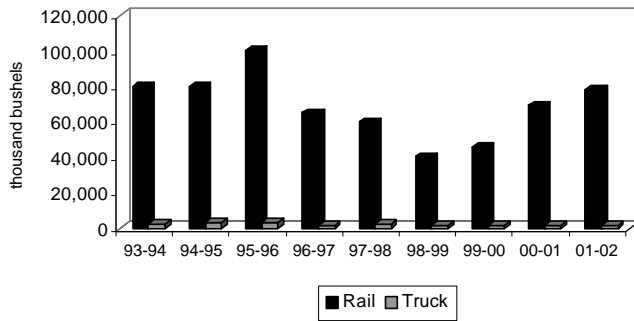
**All Shipments to Minneapolis-St. Paul
1993-94 to 2001-02**



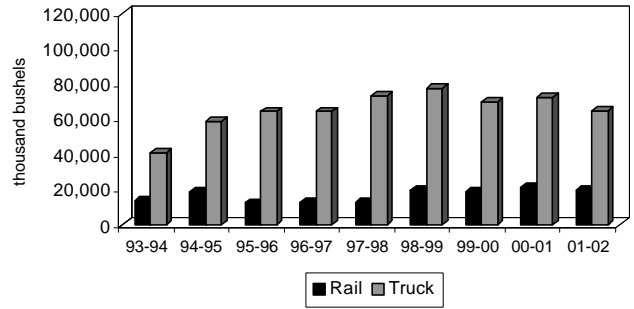
**All Shipments to Duluth-Superior
1993-94 to 2001-02**



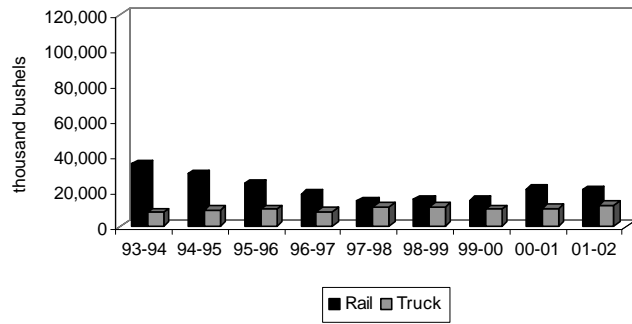
**All Shipments to PNW
1993-94 to 2001-02**



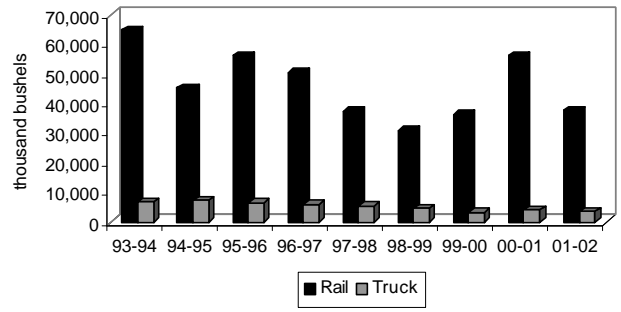
**All Shipments to North Dakota
1993-94 to 2001-02**



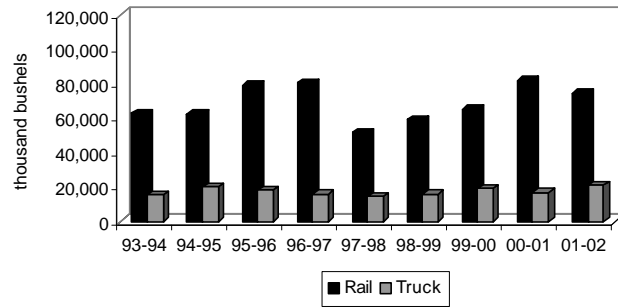
All Shipments to Other Minnesota & Wisconsin
1993-94 to 2001-02



All Shipments to Midland & Gulf
1993-94 to 2001-02



All Shipments to Other Markets
1993-94 to 2001-02

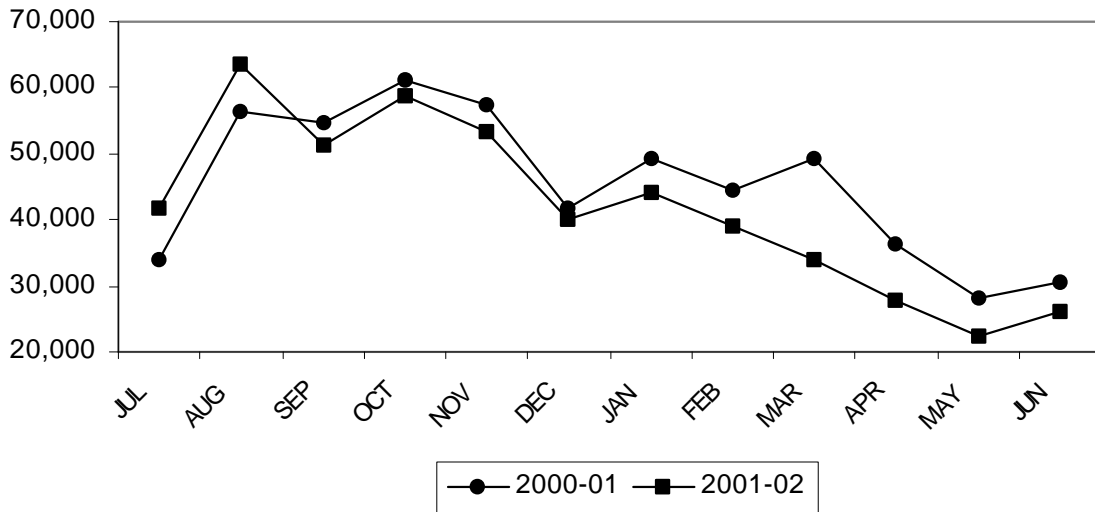


**NORTH DAKOTA GRAIN AND OILSEED MOVEMENTS
BY MONTH
July 2001- June 2002
thousand bu.**

MONTH	HRS	Durum	Soybeans	Canola	Barley	Oats	Corn	SF (cwt)	Misc.	TOTAL
July	17,463	7,038	3,520	255	6,336	497	3,320	2,386	868	41,684
August	29,176	10,182	1,447	3,726	10,085	1,003	3,737	1,926	2,100	63,381
September	21,547	6,945	1,250	4,095	7,502	272	4,345	1,004	4,337	51,296
October	13,176	4,871	18,526	1,594	6,006	795	3,548	7,296	2,859	58,671
November	19,361	4,900	8,956	999	5,986	904	5,588	5,225	1,538	53,438
December	14,010	5,150	3,349	1,946	5,931	925	5,084	2,827	961	40,182
January	15,144	5,009	7,087	1,399	6,253	932	4,719	2,772	988	44,302
February	15,314	4,318	5,348	1,574	4,849	211	4,079	2,343	923	38,960
March	14,421	3,919	2,311	823	4,605	164	4,650	2,008	948	33,848
April	10,885	3,345	3,550	368	4,446	105	2,432	1,686	840	27,657
May	9,647	1,753	2,622	1,061	3,243	148	2,242	856	906	22,477
June	12,313	3,417	2,188	575	2,771	0	2,335	1,429	914	26,285
TOTAL	192,457	60,845	60,153	18,416	67,994	6,299	46,079	31,758	18,181	502,182

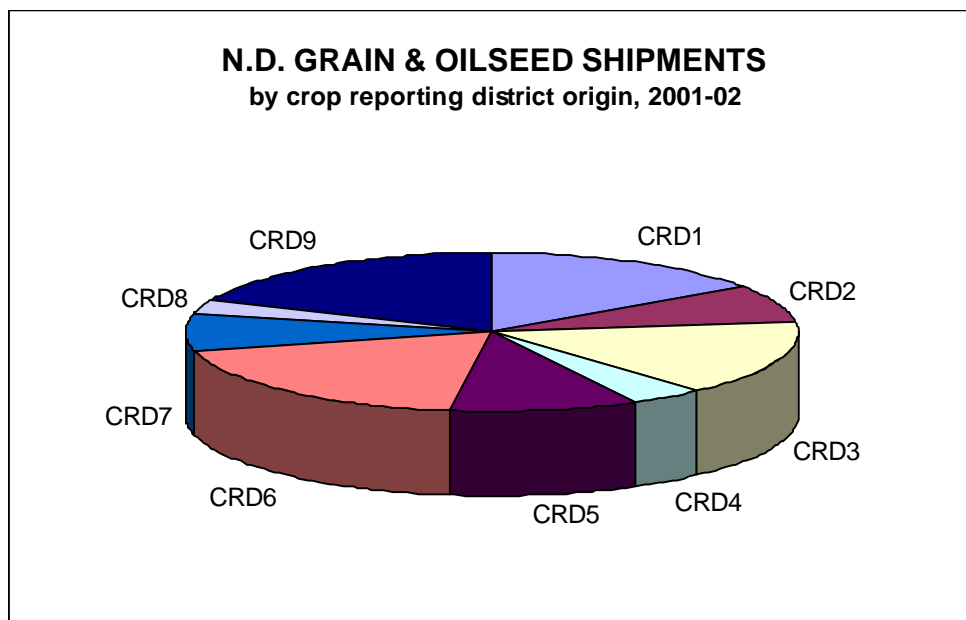
ALL COMMODITY SHIPMENTS

by month, 2000-01 and 2001-02
(thousand bushels)



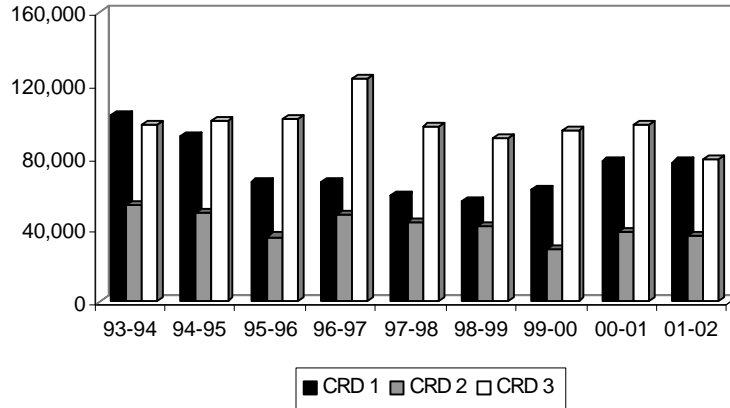
**NORTH DAKOTA GRAIN AND OILSEED SHIPMENTS
BY CROP REPORTING DISTRICT ORIGIN
1993-94 to 2001-02
thousand bu.**

YEAR	Crop Reporting District									TOTAL
	1	2	3	4	5	6	7	8	9	
1993-94	103,040	53,735	97,901	20,403	52,754	83,265	34,439	14,575	62,130	522,243
	20%	10%	19%	4%	10%	16%	7%	3%	12%	100%
1994-95	91,367	49,478	100,348	19,720	48,491	98,499	27,633	12,594	84,602	533,233
	17%	9%	19%	3%	9%	18%	5%	2%	16%	100%
1995-96	65,800	35,946	100,984	15,556	44,277	91,036	27,679	14,019	84,994	480,291
	14%	7%	21%	3%	9%	19%	6%	3%	18%	100%
1996-97	66,373	48,027	123,753	18,384	45,560	97,604	24,972	10,412	74,002	509,087
	13%	9%	24%	4%	9%	19%	5%	2%	15%	100%
1997-98	54,130	44,293	93,827	17,345	44,958	85,310	27,709	10,693	79,382	457,646
	12%	10%	21%	3%	10%	19%	6%	2%	17%	100%
1998-99	55,414	41,443	90,582	18,729	44,888	98,696	29,494	13,108	73,586	464,941
	12%	9%	20%	4%	9%	21%	6%	3%	16%	100%
1999-00	62,431	29,332	94,536	16,651	49,766	97,160	27,361	13,836	82,709	473,782
	13%	6%	20%	4%	11%	21%	6%	3%	17%	100%
2000-01	77,929	38,650	97,863	21,862	53,679	102,971	37,524	17,997	94,546	543,021
	14%	7%	18%	4%	10%	19%	7%	3%	17%	100%
2001-02	77,388	36,731	78,794	18,551	50,693	95,310	36,885	15,796	92,034	502,182
	15%	7%	16%	4%	10%	19%	7%	3%	18%	100%

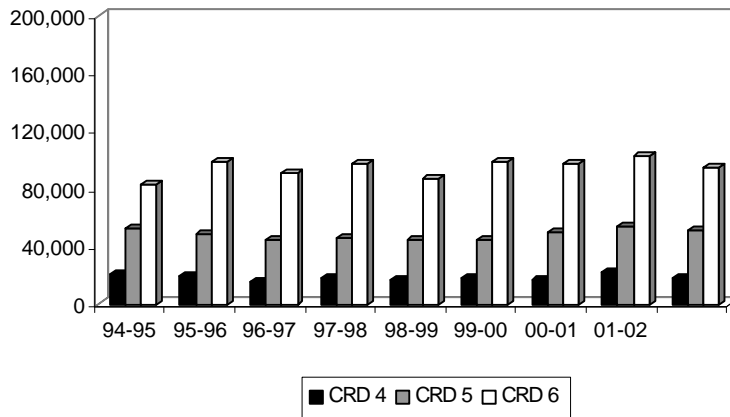


ALL GRAIN AND OILSEED SHIPMENTS BY CROP REPORTING DISTRICT (thousand bushels)

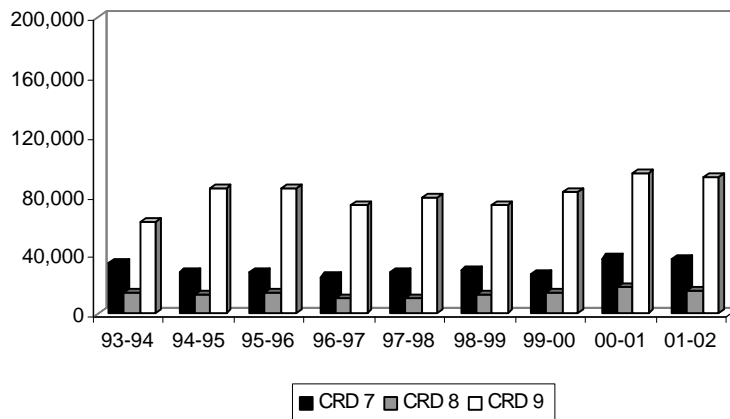
Northern Crop Reporting Districts



Central Crop Reporting Districts



Southern Crop Reporting Districts





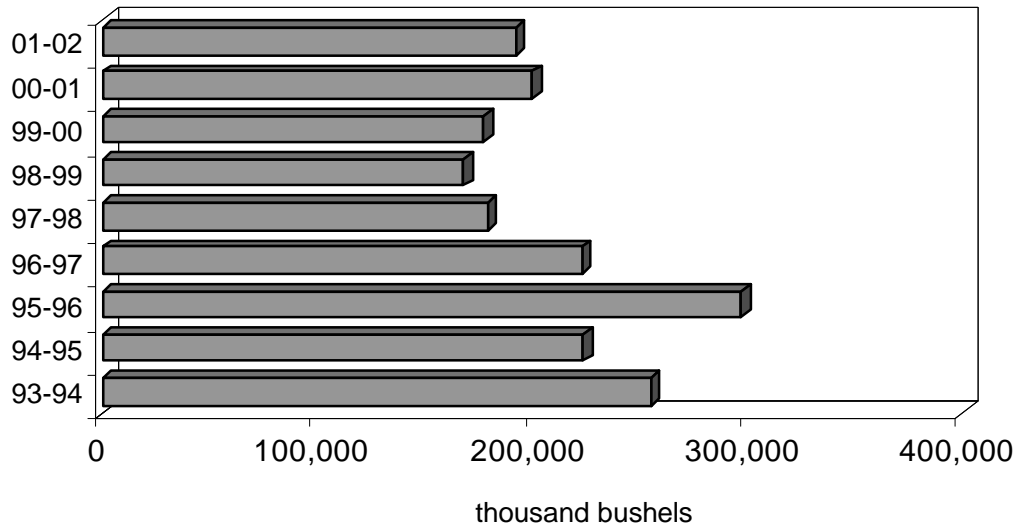
***Hard Red Spring
Wheat Shipments***

**NORTH DAKOTA HARD RED SPRING WHEAT SHIPMENTS
BY DESTINATION
thousand bu.**

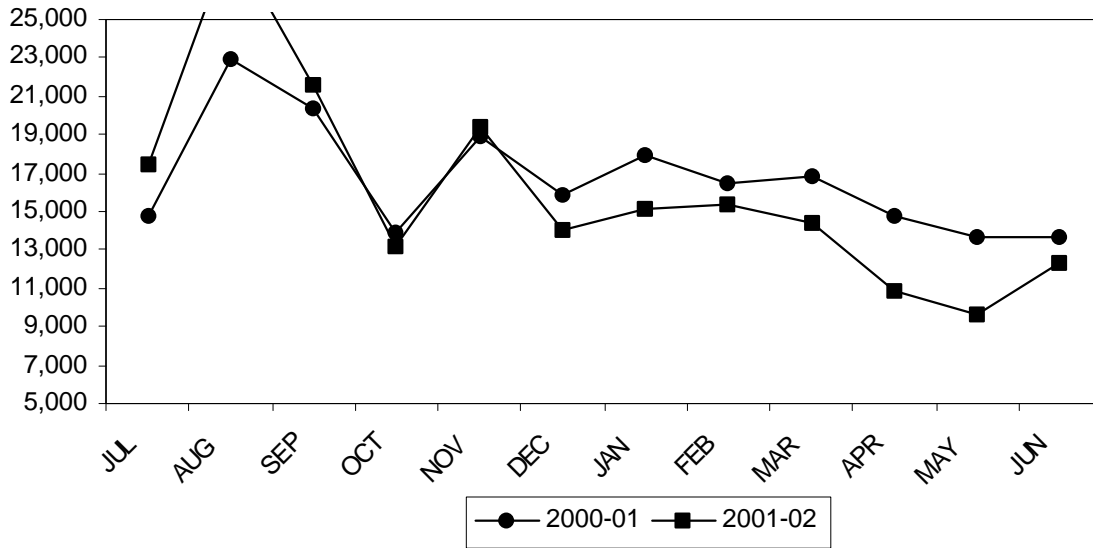
YEAR	Minneapolis- St. Paul	Duluth- Superior	PNW	North Dakota	Other Minn. & Wisconsin	Midland & Gulf	Other	TOTAL
1993-94	64,995	36,159	66,186	6,425	18,321	25,342	37,948	255,377
	28%	16%	29%	3%	8%	10%	16%	100%
1994-95	62,588	34,840	52,971	7,510	12,411	18,672	34,894	223,886
	30%	17%	26%	4%	6%	8%	17%	100%
1995-96	71,860	28,842	56,223	9,972	11,848	33,524	52,109	297,101
	24%	10%	19%	3%	4%	11%	18%	100%
1996-97	65,310	36,028	37,722	8,741	7,151	21,048	47,145	223,145
	32%	18%	19%	4%	4%	9%	23%	100%
1997-98	54,824	32,140	32,646	10,182	6,173	18,040	25,321	179,327
	31%	18%	18%	6%	3%	10%	14%	100%
1998-99	57,498	24,326	23,672	10,514	7,423	13,389	30,890	167,713
	34%	15%	14%	6%	4%	8%	18%	100%
1999-00	52,041	29,068	23,644	11,383	6,139	15,809	39,367	177,450
	29%	16%	13%	6%	3%	9%	22%	100%
2000-01	64,860	24,403	29,848	10,522	7,005	24,447	38,983	200,068
	32%	12%	15%	5%	4%	12%	19%	100%
2001-02*	57,356	19,105	46,300	13,167	8,141	19,104	29,284	192,457
	30%	10%	24%	7%	4%	10%	15%	100%

*Results are preliminary.

HRS WHEAT SHIPMENTS 1993-94 to 2001-02



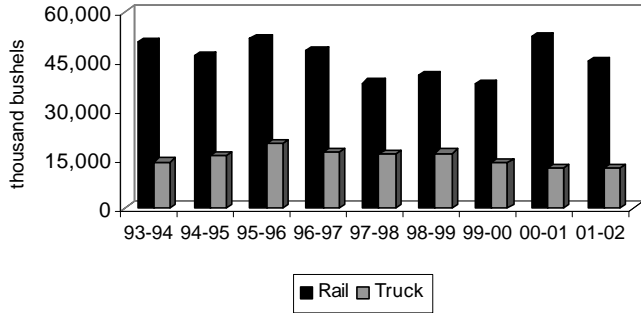
HRS WHEAT SHIPMENTS by month, 2000-01 to 2001-02 (thousand bushels)



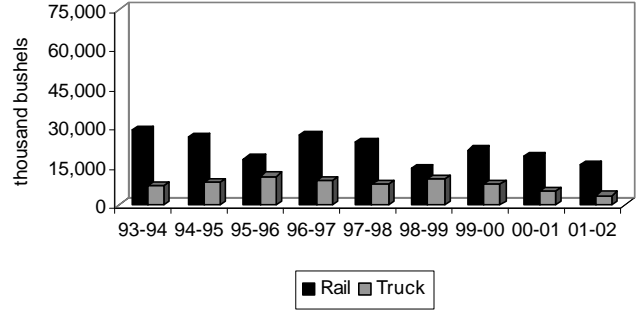
**NORTH DAKOTA HARD RED SPRING WHEAT SHIPMENTS
BY RAIL, TRUCK AND DESTINATION
thousand bu.**

YEAR	Minneapolis-St. Paul		Duluth-Superior		PNW		North Dakota		Other Minn. & Wisconsin		Midland & Gulf		Other		TOTAL	
	Rail	Truck	Rail	Truck	Rail	Truck	Rail	Truck	Rail	Truck	Rail	Truck	Rail	Truck	Rail	Truck
1993-94	50,783	14,212	28,890	7,269	64,035	2,151	2,732	3,693	15,681	2,640	22,566	2,776	35,568	2,380	220,256	35,121
	78%	22%	80%	20%	97%	3%	43%	57%	86%	14%	89%	11%	94%	6%	86%	14%
1994-95	46,657	15,931	26,243	8,597	50,957	2,014	3,704	3,806	9,189	3,222	16,000	2,672	32,622	2,272	185,372	38,514
	75%	25%	75%	25%	96%	4%	49%	51%	74%	26%	86%	14%	93%	7%	83%	17%
1995-96	51,915	19,945	17,745	11,097	54,150	5,073	2,235	7,737	8,333	3,515	30,511	3,013	49,152	2,957	214,042	50,337
	72%	28%	62%	38%	96%	4%	18%	82%	70%	30%	91%	9%	94%	6%	81%	19%
1996-97	48,111	17,199	26,733	9,295	36,242	1,480	1,596	7,145	4,775	2,376	19,133	1,915	45,435	1,710	182,025	41,120
	74%	26%	74%	26%	96%	4%	18%	82%	67%	33%	91%	9%	96%	4%	82%	18%
1997-98	38,331	16,493	24,058	8,082	30,778	1,868	2,008	8,174	4,046	2,127	16,488	1,552	23,392	1,929	139,103	40,224
	70%	30%	75%	25%	94%	6%	20%	80%	66%	34%	91%	9%	92%	8%	78%	22%
1998-99	40,586	16,911	14,156	10,170	22,653	1,020	1,218	9,296	5,039	2,384	12,603	786	29,564	1,326	125,819	41,894
	71%	29%	58%	42%	96%	4%	11%	89%	66%	34%	94%	6%	96%	4%	75%	25%
1999-00	37,966	14,075	21,197	7,871	22,782	862	2,517	8,866	4,365	1,774	15,465	345	37,039	2,329	141,329	36,121
	73%	27%	73%	27%	96%	4%	22%	78%	71%	29%	98%	2%	94%	6%	80%	20%
2000-01	52,472	12,388	18,929	5,474	29,210	638	1,710	8,812	4,926	2,079	23,928	518	37,703	1,281	168,878	31,190
	81%	19%	78%	22%	98%	2%	16%	84%	70%	30%	98%	2%	97%	3%	84%	16%
2001-02	45,018	12,338	15,345	3,760	45,523	777	1,875	11,291	4,807	3,334	18,430	674	27,855	1,429	158,854	33,603
	78%	22%	80%	20%	98%	2%	14%	86%	59%	41%	96%	4%	95%	5%	83%	17%

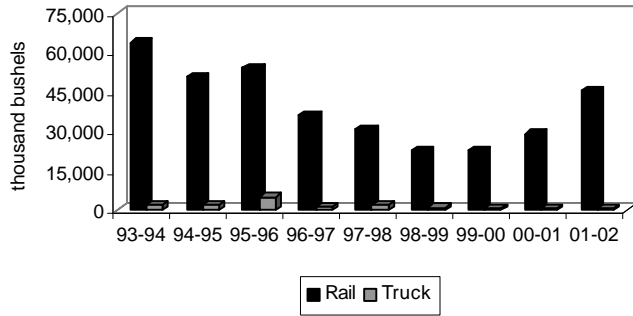
HRS Wheat to Minneapolis-St. Paul
1993-94 to 2001-02



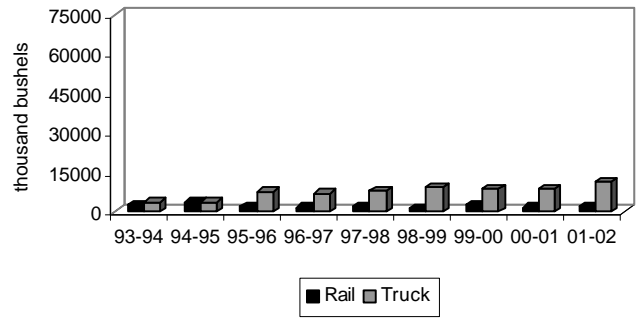
HRS Wheat to Duluth-Superior
1993-94 to 2001-02



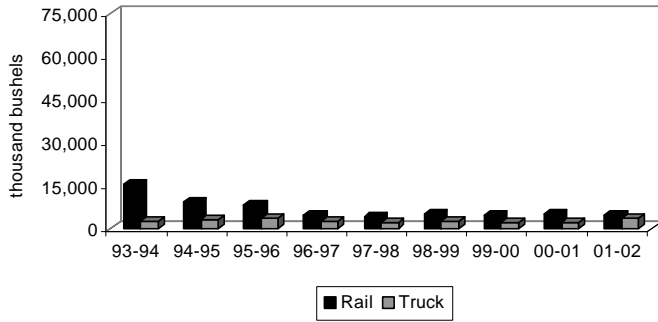
HRS Wheat to PNW
1993-94 to 2001-02



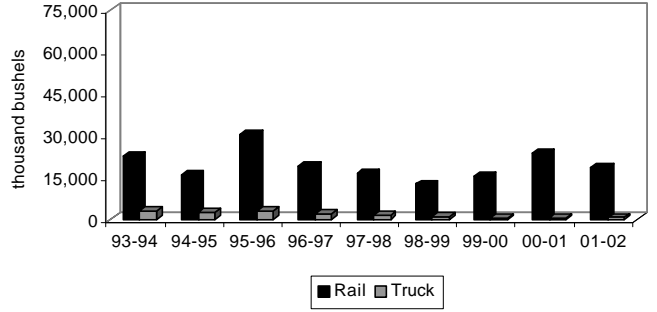
HRS Wheat to North Dakota
1993-94 to 2001-02



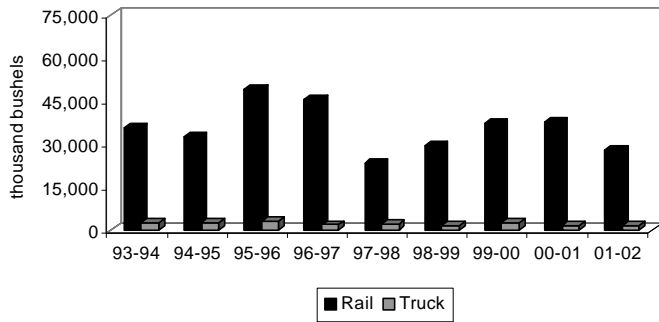
HRS Wheat to Other Minnesota & Wisconsin
1993-94 to 2001-02



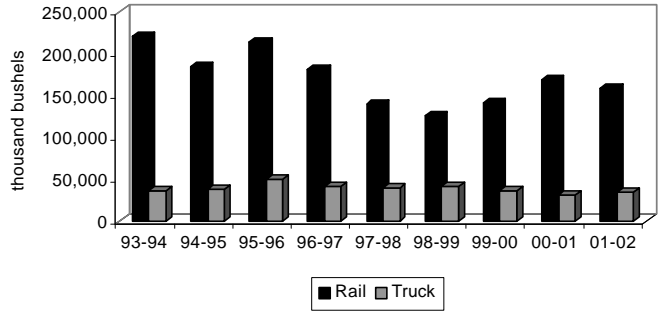
HRS Wheat to Midland & Gulf
1993-94 to 2001-02



HRS Wheat to Other Markets
1993-94 to 2001-02

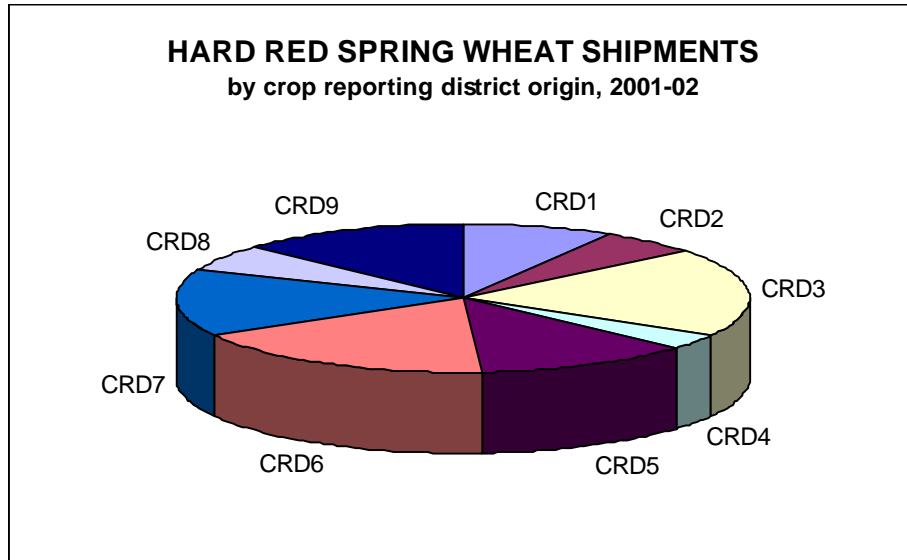


Total HRS Wheat Shipments
1993-94 to 2001-02



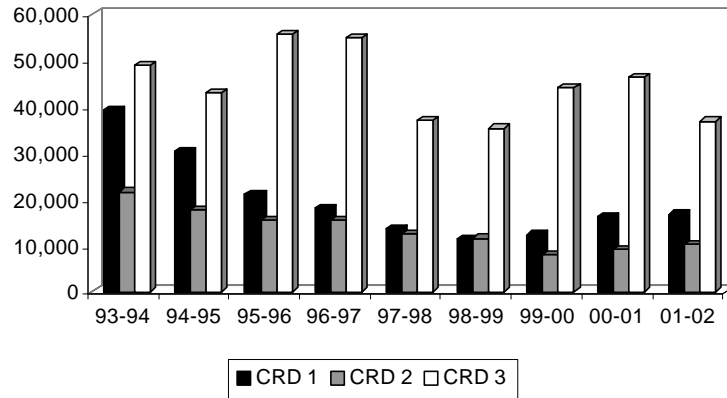
**NORTH DAKOTA HARD RED SPRING WHEAT SHIPMENTS
BY CROP REPORTING DISTRICT ORIGIN**
thousand bu.

YEAR	Crop Reporting District									TOTAL
	1	2	3	4	5	6	7	8	9	
1993-94	39,245 15%	21,662 8%	49,068 19%	12,029 5%	30,307 12%	36,024 14%	30,409 12%	11,719 5%	24,913 10%	255,377 100%
1994-95	30,429 14%	17,669 8%	43,099 19%	10,003 4%	23,169 10%	32,962 15%	25,078 11%	9,900 4%	31,576 14%	223,886 100%
1995-96	26,395 10%	19,336 8%	58,232 23%	9,840 4%	28,109 11%	39,401 15%	28,825 11%	12,690 5%	33,075 13%	225,904 100%
1996-97	17,973 8%	15,443 7%	55,052 25%	8,604 4%	21,990 10%	37,985 17%	21,830 10%	9,848 4%	30,319 14%	219,045 100%
1997-98	13,702 8%	12,487 7%	37,081 21%	7,719 4%	18,775 10%	26,859 15%	23,779 13%	9,598 5%	29,328 16%	179,327 100%
1998-99	11,384 7%	11,601 7%	35,393 22%	6,594 4%	16,430 9%	29,389 17%	23,092 14%	10,145 6%	23,686 14%	167,713 100%
1999- 00	12,268 7%	7,977 4%	44,229 25%	6,636 4%	22,078 12%	29,400 17%	21,192 12%	10,289 6%	23,381 13%	17,450 100%
2000- 01	16,171 8%	9,090 5%	46,282 23%	6,301 3%	22,214 11%	33,091 17%	27,822 14%	12,822 6%	26,276 13%	200,068 100%
2001- 02	16,831 9%	10,174 5%	36,947 19%	6,584 3%	23,436 12%	34,236 18%	27,684 14%	11,333 6%	26,230 13%	192,457 100%

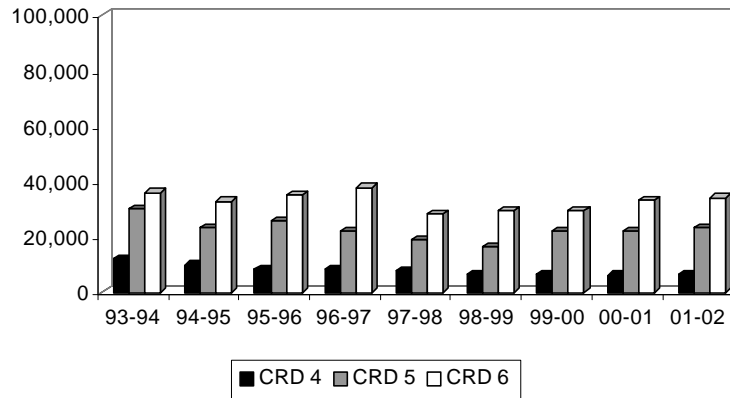


HARD RED SPRING WHEAT SHIPMENTS BY CROP REPORTING DISTRICT (Thousand Bushels)

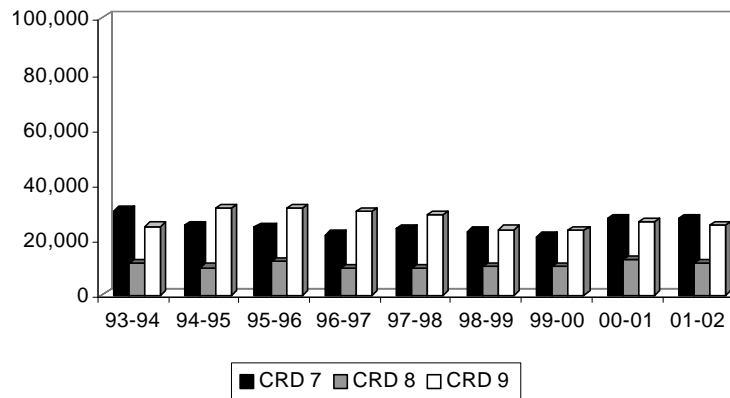
Northern Crop Reporting Districts



Central Crop Reporting Districts



Southern Crop Reporting Districts





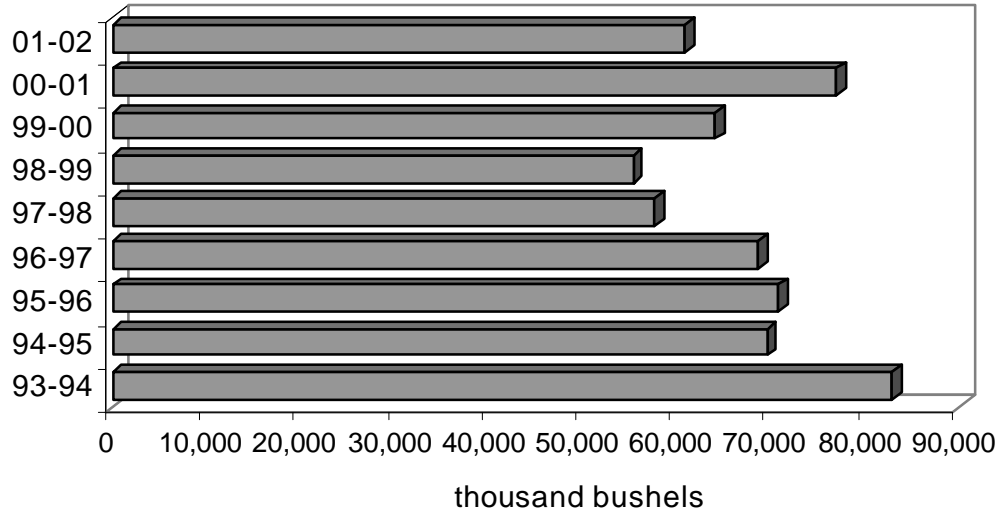
***Durum
Shipments***

**NORTH DAKOTA DURUM SHIPMENTS
BY DESTINATION
thousand bu.**

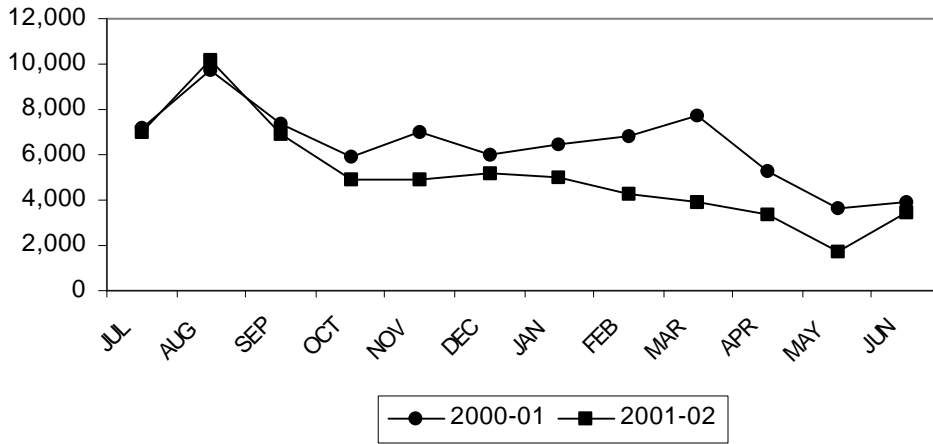
YEAR	Minneapolis- St. Paul	Duluth- Superior	PNW	North Dakota	Other Minn. & Wisconsin	Midland & Gulf	Other	TOTAL
1993-94	21,155	12,798	2,359	6,808	10,455	19,725	11,440	84,740
	33%	20%	4%	10%	33%	16%	18%	100%
1994-95	25,295	6,592	1,570	6,493	5,870	12,590	11,153	69,562
	44%	12%	3%	11%	10%	18%	20%	100%
1995-96	22,470	7,481	693	7,126	5,384	15,461	12,261	70,875
	32%	11%	1%	10%	8%	22%	17%	100%
1996-97	23,379	10,541	879	6,579	6,284	11,333	9,717	68,713
	41%	18%	2%	11%	11%	16%	17%	100%
1997-98	18,496	9,091	217	9,530	4,154	8,728	7,334	57,551
	32%	16%	0%	17%	7%	15%	13%	100%
1998-99	22,552	4,884	608	11,186	3,431	6,229	6,483	55,372
	41%	9%	1%	20%	6%	11%	12%	100%
1999-00	21,987	8,569	676	11,966	3,695	407	7,756	64,056
	34%	13%	1%	19%	6%	15%	12%	100%
2000-01	21,369	10,297	2,134	12,396	7,526	13,781	9,521	77,025
	28%	13%	3%	16%	10%	18%	12%	100%
2001-02*	15,892	15,272	1,469	12,367	5,703	5,704	4,437	60,845
	26%	25%	2%	20%	9%	9%	7%	100%

* Results are preliminary.

DURUM SHIPMENTS 1993-94 to 2001-02



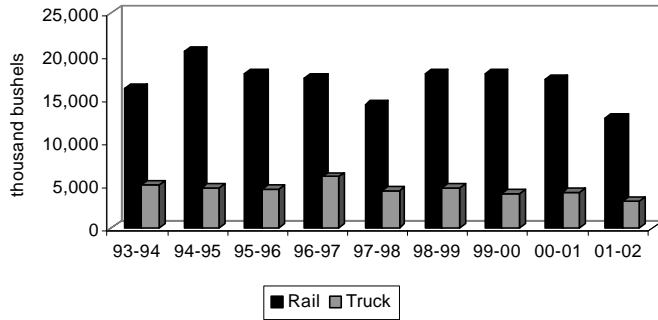
DURUM SHIPMENTS by month, 2000-01 to 2001-02 (thousand bushels)



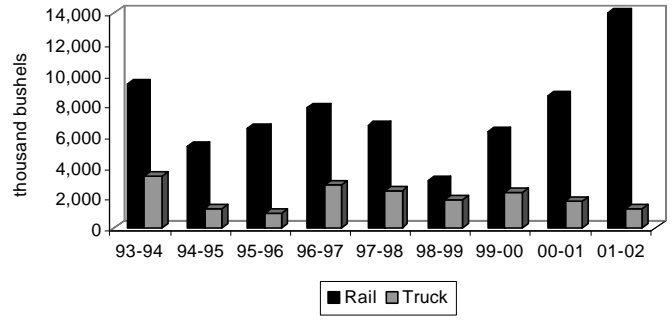
**NORTH DAKOTA DURUM SHIPMENTS
BY RAIL, TRUCK AND DESTINATION
thousand bu.**

YEAR	Minneapolis-St. Paul		Duluth-Superior		PNW		North Dakota		Other Minn. & Wisconsin		Midland & Gulf		Other		TOTAL	
	Rail	Truck	Rail	Truck	Rail	Truck	Rail	Truck	Rail	Truck	Rail	Truck	Rail	Truck	Rail	Truck
1993-94	16,165	4,990	9,406	3,392	2,358	1	2,296	1,034	9,821	634	19,509	216	10,871	569	70,396	14,344
	76%	24%	73%	27%	100%	0%	33%	67%	94%	6%	99%	1%	95%	5%	83%	17%
1994-95	20,604	4,691	5,327	1,265	1,556	14	947	5,546	5,537	333	12,387	203	9,928	1,125	56,284	13,278
	81%	19%	81%	19%	99%	1%	15%	85%	94%	6%	98%	2%	89%	11%	81%	19%
1995-96	18,014	4,456	6,514	967	690	2	1,166	5,960	5,031	353	15,405	56	11,741	520	58,560	12,315
	80%	20%	87%	13%	100%	0%	16%	84%	93%	7%	100%	0%	96%	4%	83%	17%
1996-97	17,450	5,929	7,796	2,745	838	41	2,938	3,641	5,542	742	11,051	282	9,409	308	55,024	13,689
	75%	25%	74%	26%	95%	5%	45%	55%	88%	12%	98%	2%	97%	3%	80%	20%
1997-98	14,284	4,212	6,658	2,433	214	3	5,833	3,697	3,527	627	8,596	132	7,188	146	46,301	11,250
	77%	23%	73%	27%	99%	1%	61%	39%	85%	15%	98%	2%	98%	2%	80%	20%
1998-99	17,976	4,575	3,086	1,798	601	7	6,025	5,161	2,532	900	6,043	186	6,154	329	42,417	12,955
	80%	20%	63%	37%	99%	1%	53%	47%	73%	27%	97%	3%	95%	5%	77%	23%
1999-00	18,003	3,984	6,295	2,274	675	1	6,109	5,857	3,059	635	9,378	29	7,529	227	51,049	13,007
	82%	18%	73%	27%	100%	0%	51%	49%	83%	17%	100%	0%	97%	3%	80%	20%
2000-01	17,288	4,081	8,620	1,677	2,124	10	6,269	6,127	6,734	792	13,678	103	8,318	1,204	63,031	13,994
	81%	19%	84%	16%	100%	0%	51%	49%	89%	11%	99%	1%	87%	13%	82%	18%
2001-02	12,735	3,157	13,999	1,272	1,468	1	7,752	4,615	5,301	402	5,648	56	4,136	301	51,041	9,804
	80%	20%	92%	8%	100%	0%	63%	37%	93%	7%	99%	1%	93%	7%	84%	16%

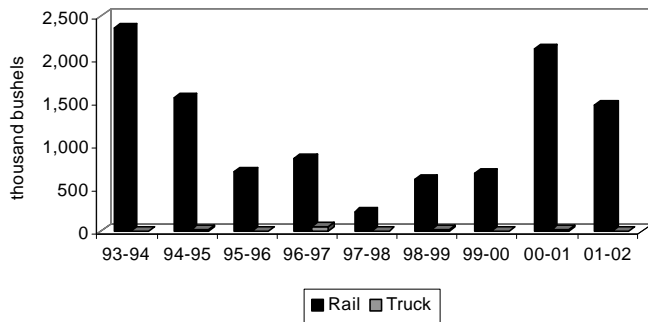
Durum to Minneapolis-St. Paul
1993-94 to 2001-02



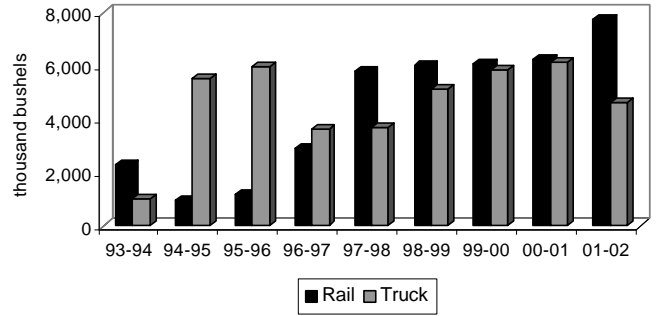
Durum to Duluth-Superior
1993-94 to 2001-02



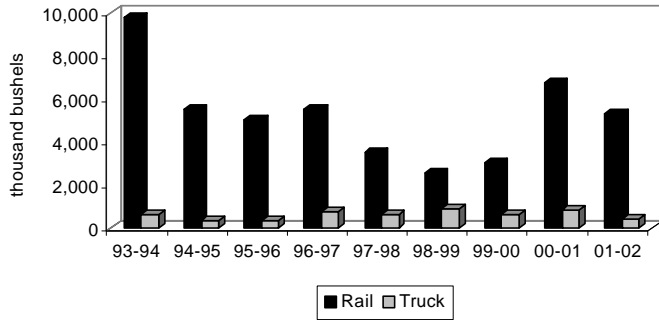
Durum to PNW
1993-94 to 2001-02



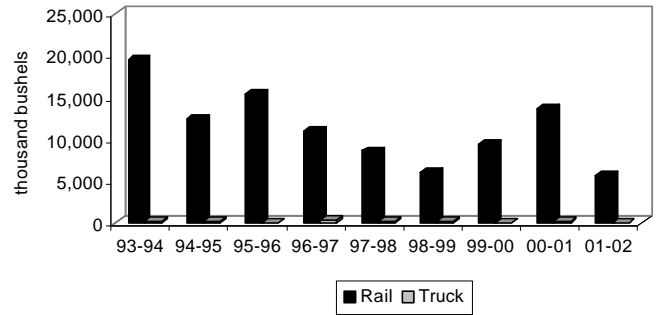
Durum to North Dakota
1993-94 to 2001-02



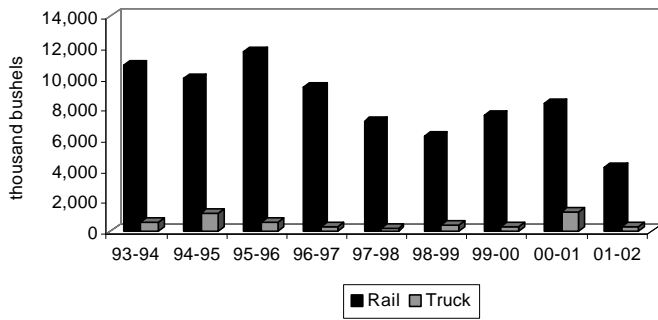
Durum to Other Minnesota & Wisconsin
1993-94 to 2001-02



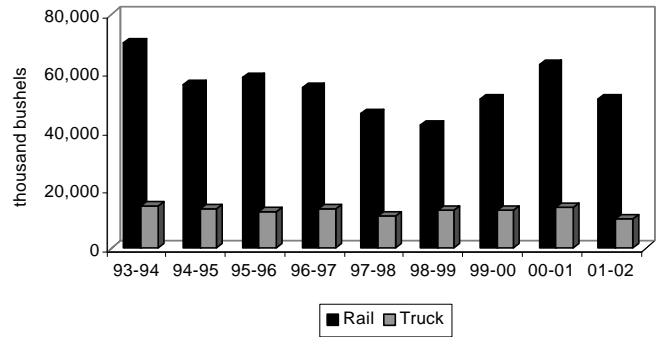
Durum to Midland & Gulf
1993-94 to 2001-02



Durum to Other Markets
1993-94 to 2001-02

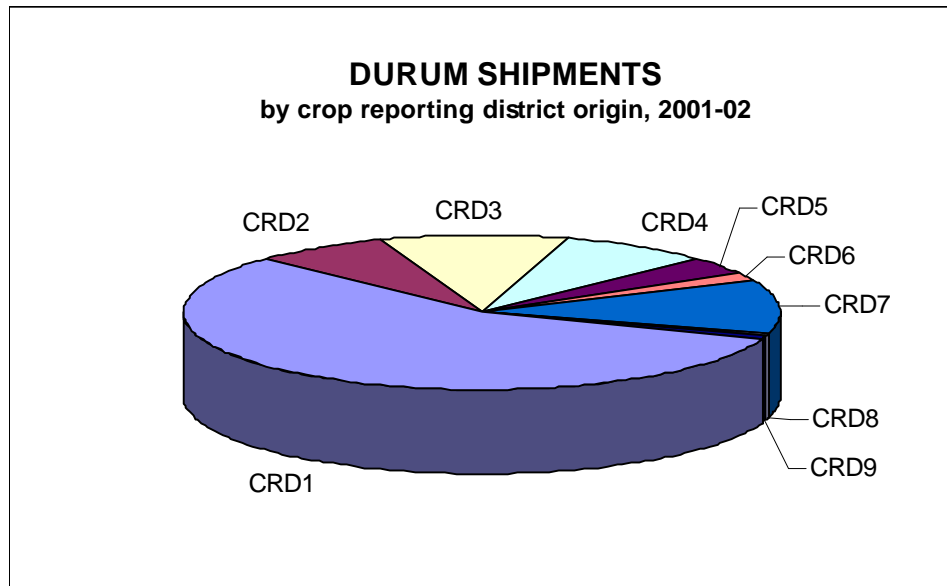


Total Durum Shipments
1993-94 to 2001-02



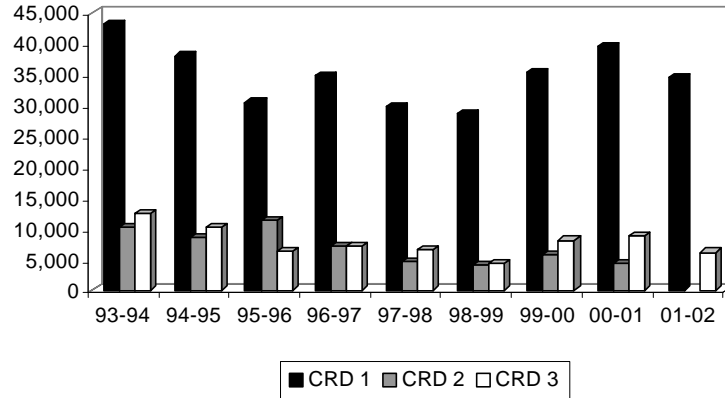
**NORTH DAKOTA DURUM SHIPMENTS
BY CROP REPORTING DISTRICT ORIGIN**
thousand bu.

YEAR	Crop Reporting District									TOTAL
	1	2	3	4	5	6	7	8	9	
1993-94	43,240 51%	13,427 16%	12,421 15%	5,118 6%	4,358 5%	1,704 2%	2,661 3%	242 0%	1,570 2%	84,741 100%
1994-95	37,975 55%	10,178 15%	10,158 15%	4,956 7%	3,210 5%	883 1%	1,301 2%	152 0%	747 1%	69,562 100%
1995-96	37,541 53%	10,727 15%	9,254 13%	6,415 9%	3,574 5%	418 1%	2,477 4%	115 0%	352 1%	70,815 100%
1996-97	34,706 51%	11,381 17%	7,117 11%	7,216 11%	3,220 5%	905 1%	2,589 4%	109 0%	522 1%	67,765 100%
1997-98	29,715 52%	7,204 13%	6,520 11%	7,352 13%	2,484 4%	240 0%	3,469 6%	137 0%	429 1%	57,551 100%
1998-99	28,588 52%	4,622 8%	4,323 8%	8,010 14%	3,126 6%	998 2%	4,995 9%	285 1%	425 1%	55,372 100%
1999-00	35,273 55%	4,116 6%	8,131 13%	5,954 9%	3,250 5%	1,815 3%	4,321 7%	352 1%	844 1%	64,056 100%
2000-01	39,479 51%	5,751 7%	8,864 12%	8,838 11%	3,393 4%	1,899 2%	7,601 10%	514 1%	687 1%	77,025 100%
2001-02	34,469 57%	4,389 7%	6,208 10%	4,962 8%	2,436 4%	752 1%	6,910 11%	338 1%	380 1%	60,845 100%

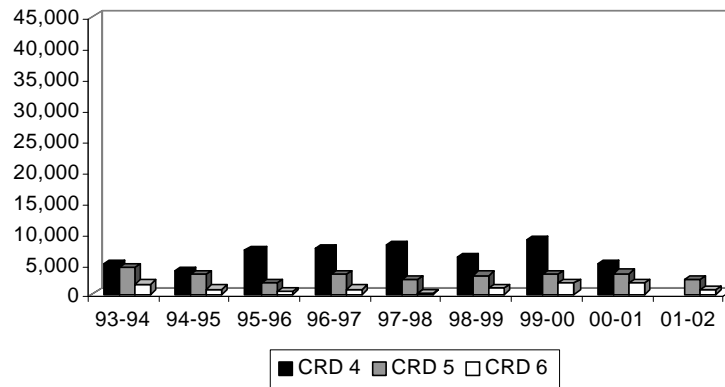


DURUM SHIPMENTS BY CROP REPORTING DISTRICT (Thousand Bushels)

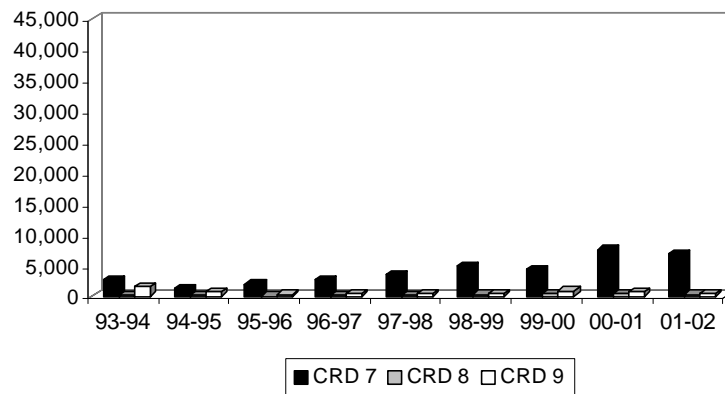
Northern Crop Reporting Districts



Central Crop Reporting Districts



Southern Crop Reporting Districts





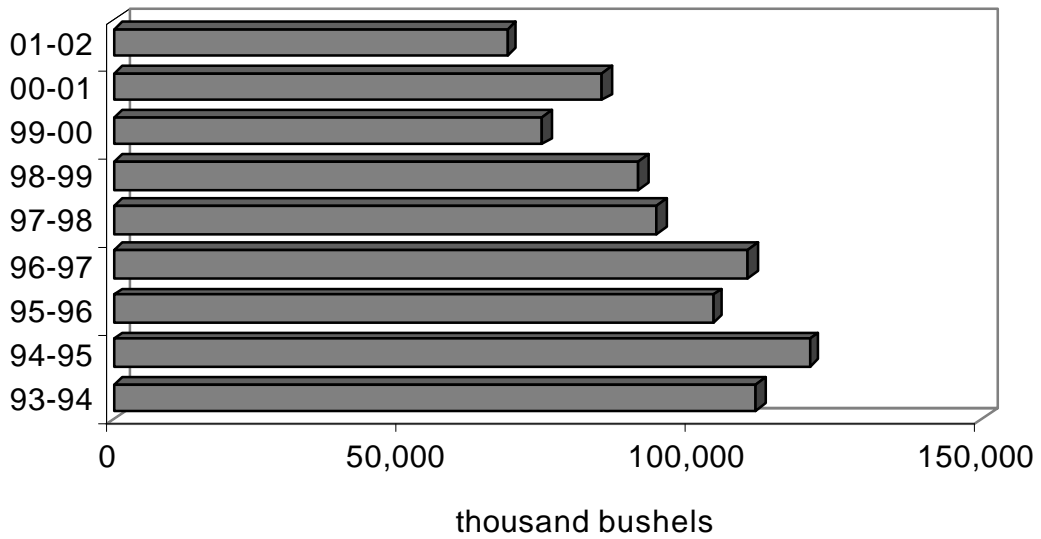
***Barley
Shipments***

**NORTH DAKOTA BARLEY SHIPMENTS
BY DESTINATION
thousand bu.**

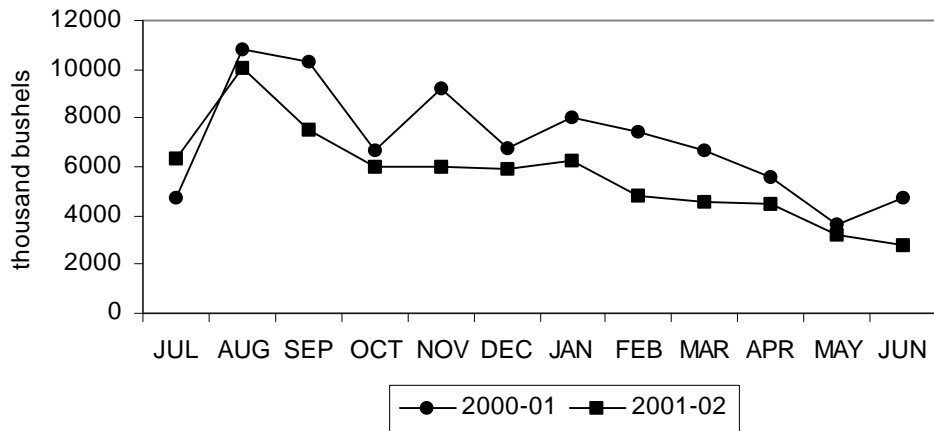
YEAR	Minneapolis- St. Paul	Duluth- Superior	PNW	North Dakota	Other Minn. & Wisconsin	Midland & Gulf	Other	TOTAL
1993-94	25,979	16,345	8,464	17,966	10,299	18,267	13,758	111,087
	28%	18%	9%	19%	11%	16%	15%	100%
1994-95	33,960	14,514	6,763	23,597	16,534	11,798	13,085	120,251
	31%	13%	6%	22%	15%	10%	12%	100%
1995-96	38,368	2,748	8,287	24,339	13,108	5,385	11,354	103,590
	37%	3%	8%	23%	13%	5%	11%	100%
1996-97	34,866	5,912	7,749	22,014	9,347	12,697	17,002	109,587
	36%	6%	8%	23%	10%	12%	18%	100%
1997-98	29,336	9,213	10,819	18,506	9,377	5,902	10,853	94,006
	31%	10%	12%	20%	10%	6%	12%	100%
1998-99	35,319	3,400	4,314	20,406	8,680	7,642	11,132	90,892
	39%	4%	5%	22%	10%	8%	12%	100%
1999-00	32,210	3,245	738	17,562	6,359	5,256	8,772	74,142
	43%	4%	1%	24%	9%	7%	12%	100%
2000-01	29,486	4,361	7,266	17,222	5,871	8,278	12,047	84,531
	35%	5%	9%	20%	7%	10%	14%	100%
2001-02*	26,409	3,435	5,151	9,830	5,640	6,744	10,785	67,994
	39%	5%	8%	14%	8%	10%	16%	100%

* Results are preliminary.

BARLEY SHIPMENTS 1993-94 to 2001-02



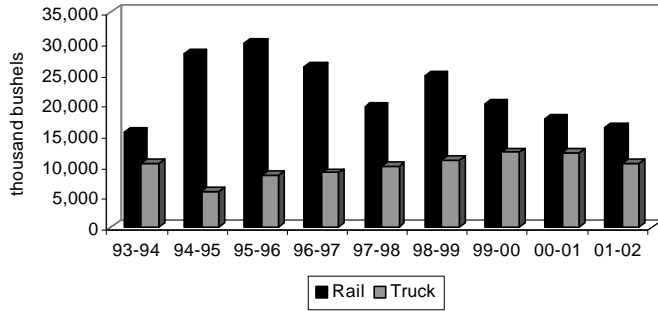
BARLEY SHIPMENTS by month, 2000-01 to 2001-02



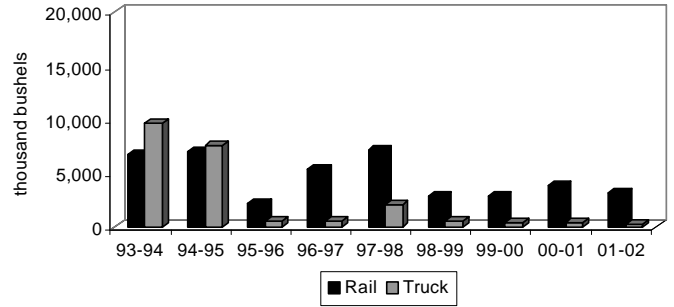
**NORTH DAKOTA BARLEY SHIPMENTS
BY RAIL, TRUCK AND DESTINATION
thousand bu.**

YEAR	Minneapolis-St. Paul		Duluth-Superior		PNW		North Dakota		Other Minn. & Wisconsin		Midland & Gulf		Other		TOTAL	
	Rail	Truck	Rail	Truck	Rail	Truck	Rail	Truck	Rail	Truck	Rail	Truck	Rail	Truck	Rail	Truck
1993-94	15,525	10,454	6,706	9,639	8,248	216	6,847	11,119	8,865	1,364	17,367	909	11,438	2,320	75,066	36,021
	60%	40%	41%	59%	97%	3%	38%	62%	87%	13%	95%	5%	83%	17%	68%	32%
1994-95	28,285	5,675	6,980	7,534	6,562	201	10,295	13,302	13,782	2,752	10,897	901	10,030	3,055	86,831	33,420
	83%	17%	48%	52%	97%	3%	44%	56%	83%	17%	92%	8%	77%	23%	72%	28%
1995-96	29,965	8,403	2,189	559	8,184	103	7,312	17,027	10,326	2,782	4,750	635	9,533	1,821	72,260	31,330
	78%	22%	80%	20%	99%	1%	30%	70%	79%	21%	88%	12%	84%	16%	70%	30%
1996-97	26,099	8,787	5,335	577	7,733	16	5,467	16,547	7,041	2,306	11,699	998	15,564	1,438	78,918	30,669
	75%	25%	90%	10%	100%	0%	25%	75%	75%	25%	92%	8%	92%	8%	72%	28%
1997-98	19,541	9,795	7,207	2,006	10,779	40	2,509	15,997	5,964	3,413	5,154	748	9,874	979	61,027	32,979
	67%	33%	78%	22%	100%	0%	14%	86%	64%	36%	87%	13%	91%	9%	65%	35%
1998-99	24,581	10,738	2,862	538	4,244	70	4,922	15,483	5,860	2,820	6,801	841	9,976	1,156	59,246	31,646
	70%	30%	84%	16%	98%	2%	24%	76%	68%	32%	89%	11%	90%	10%	65%	35%
1999-00	20,034	12,176	2,907	339	648	90	3,516	14,047	4,601	1,767	4,653	603	6,915	1,857	43,274	30,868
	62%	38%	90%	10%	88%	12%	20%	80%	72%	28%	89%	11%	79%	21%	58%	42%
2000-01	17,512	11,974	3,910	451	7,203	63	3,883	13,340	3,951	1,921	7,842	436	11,113	934	55,413	29,118
	89%	41%	90%	10%	99%	1%	23%	77%	67%	33%	95%	5%	92%	8%	66%	34%
2001-02	16,095	10,314	3,170	265	5,078	74	1,191	8,638	3,924	1,716	6,382	362	9,777	1,007	45,618	22,376
	61%	39%	92%	8%	9%	1%	12%	88%	70%	30%	95%	5%	91%	9%	67%	33%

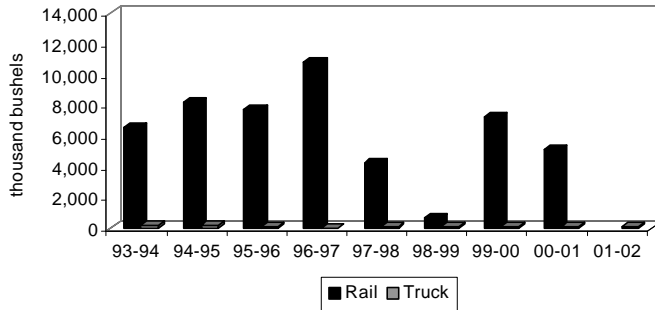
Barley to Minneapolis-St. Paul
1993-94 to 2001-02



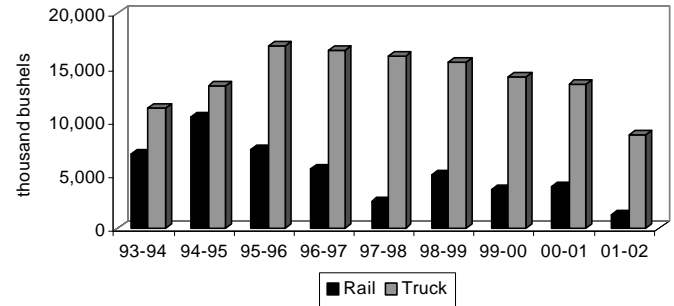
Barley to Duluth-Superior
1993-94 to 2001-02



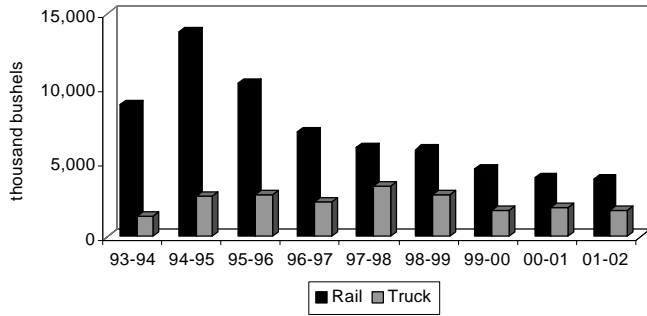
Barley to PNW
11993-94 to 2001-02



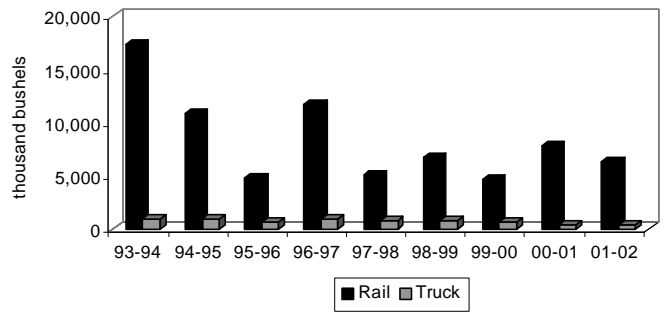
Barley to North Dakota
1993-94 to 2001-02



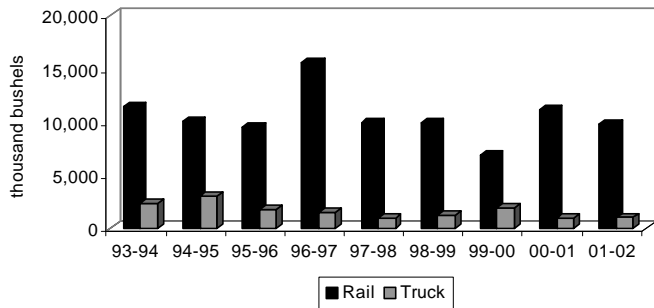
Barley to Other Minnesota & Wisconsin
1993-94 to 2001-02



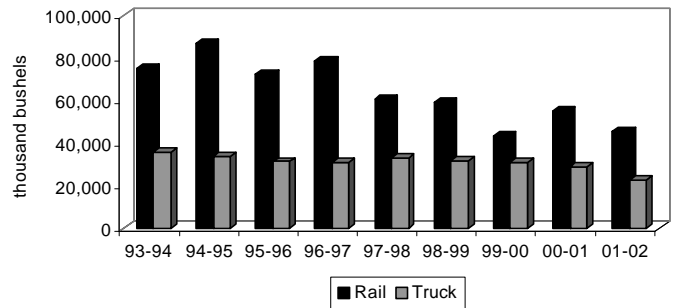
Barley to Midland & Gulf
1993-94 to 2001-02



Barley to Other Markets
1993-94 to 2001-02

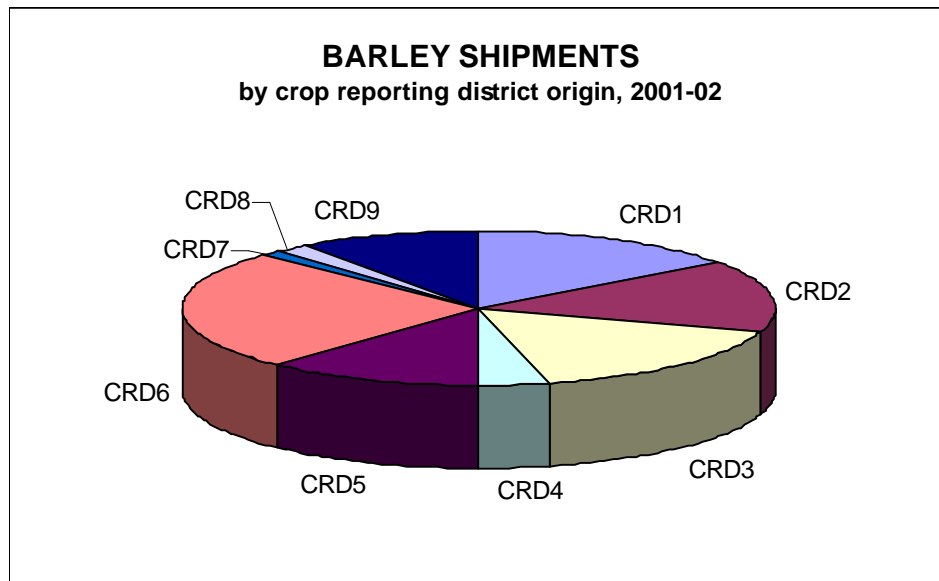


Total Barley Shipments
1993-94 to 2001-02



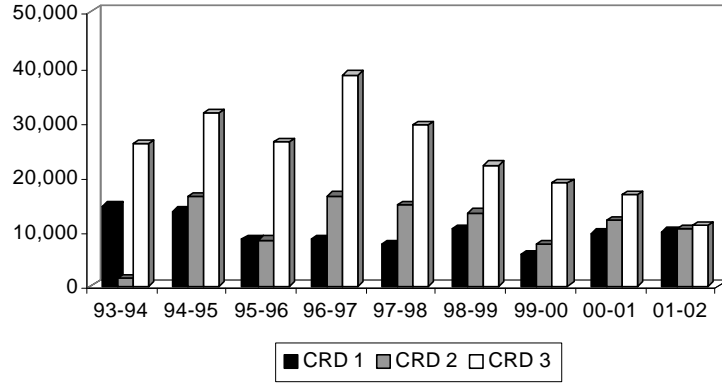
**NORTH DAKOTA BARLEY SHIPMENTS
BY CROP REPORTING DISTRICT ORIGIN**
thousand bu.

YEAR	Crop Reporting District									TOTAL
	1	2	3	4	5	6	7	8	9	
1993-94	14,657 13%	14,888 13%	25,960 23%	1,308 1%	11,144 10%	27,022 24%	854 0%	1,033 0%	14,221 13%	111,087 100%
1994-95	13,695 11%	16,394 14%	31,422 26%	2,400 2%	12,394 10%	34,056 28%	846 1%	1,064 1%	7,979 7%	120,251 100%
1995-96	8,467 10%	8,404 10%	26,315 31%	1,656 2%	9,877 11%	24,639 29%	517 0%	599 0%	5,490 6%	85,964 100%
1996-97	8,457 8%	16,436 15%	38,523 36%	1,178 1%	10,067 9%	27,443 25%	164 0%	139 0%	5,414 5%	107,821 100%
1997-98	7,719 8%	14,852 16%	29,362 31%	1,068 1%	10,354 11%	24,580 26%	18 0%	247 1%	5,787 6%	93,987 100%
1998-99	10,371 11%	13,404 15%	22,038 24%	1,703 2%	11,274 12%	25,946 29%	128 0%	865 1%	5,164 6%	90,892 100%
1999-00	5,783 8%	7,586 10%	18,844 25%	1,845 2%	9,646 13%	23,957 32%	366 0%	1,046 1%	5,069 7%	74,142 100%
2000-01	9,657 11%	12,064 14%	16,593 20%	3,246 4%	11,351 13%	22,212 26%	521 1%	1,528 2%	7,359 9%	84,531 100%
2001-02	9,923 15%	10,318 15%	11,119 16%	2,399 4%	8,260 12%	17,321 25%	641 1%	1,124 2%	6,888 10%	67,994 100%

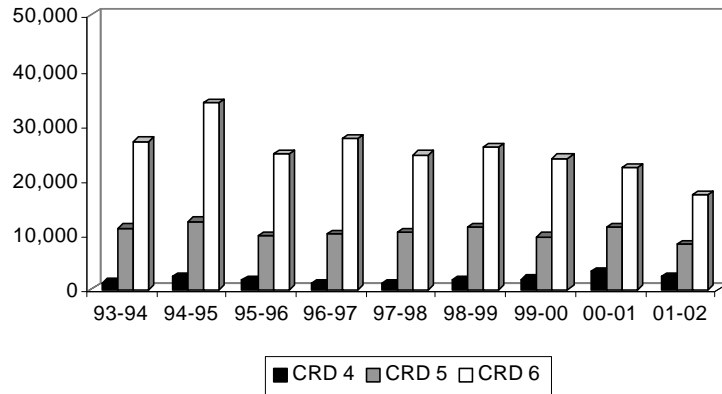


BARLEY SHIPMENTS BY CROP REPORTING DISTRICT (Thousand Bushels)

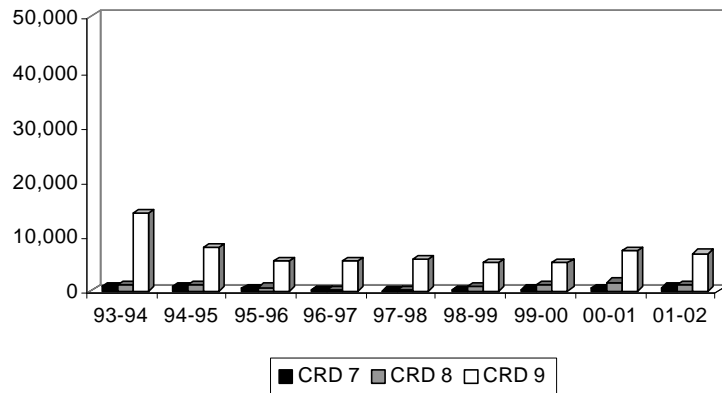
Northern Crop Reporting Districts



Central Crop Reporting Districts



Southern Crop Reporting Districts





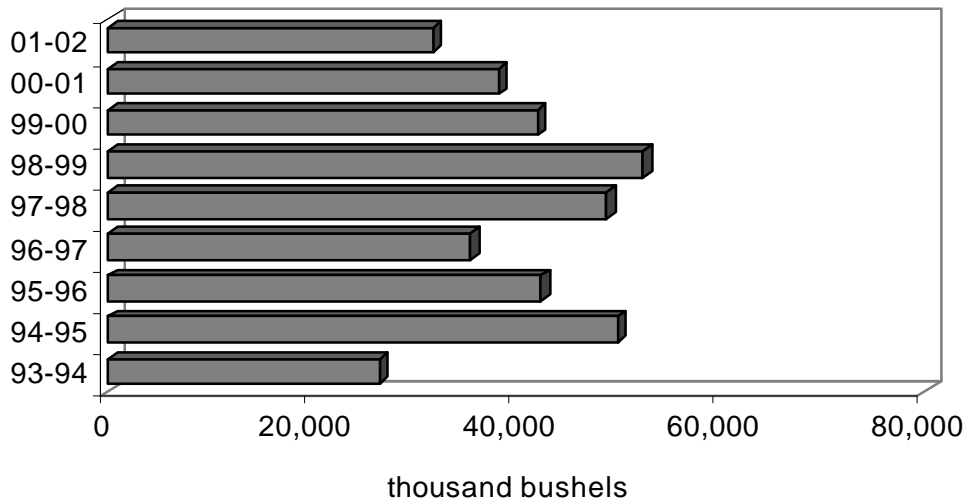
***Sunflower
Shipments***

**NORTH DAKOTA SUNFLOWER SHIPMENTS
BY DESTINATION
thousand bu.**

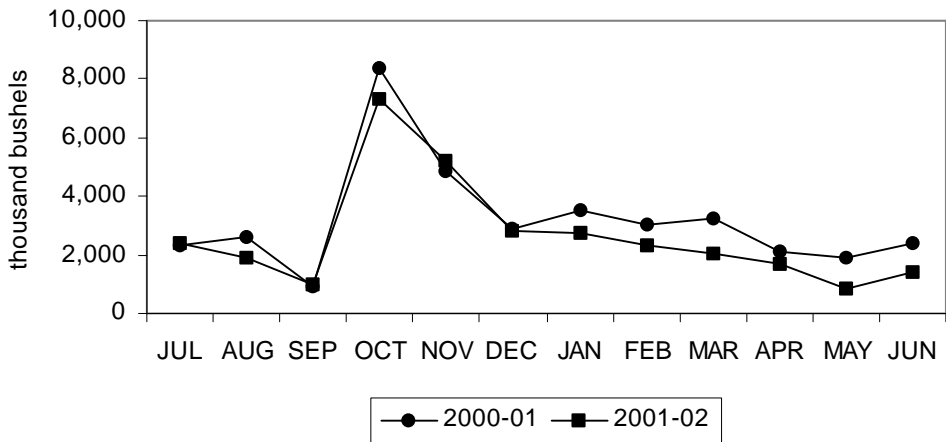
YEAR	Minneapolis- St. Paul	Duluth- Superior	PNW	North Dakota	Other Minn. & Wisconsin	Midland & Gulf	Other	TOTAL
1993-94	2,091	38	173	16,721	1,364	769	5,426	26,582
	8%	0%	1%	63%	5%	3%	20%	100%
1994-95	2,619	2,775	425	32,726	1,574	1,260	8,543	49,921
	5%	6%	1%	66%	3%	3%	17%	100%
1995-96	1,824	2,805	485	28,889	1,865	824	5,648	42,338
	4%	7%	1%	68%	4%	2%	13%	100%
1996-97	1,553	108	86	27,548	1,656	838	3,631	35,419
	4%	0%	0%	78%	5%	2%	10%	100%
1997-98	2,243	2,179	280	36,634	3,674	612	3,164	48,786
	5%	4%	1%	75%	8%	1%	6%	100%
1998-99	4,664	3,310	352	35,156	4,032	571	4,261	52,320
	9%	6%	1%	67%	8%	1%	8%	100%
1999-00	2,312	789	360	29,836	4,141	550	4,068	42,052
	5%	2%	1%	71%	10%	1%	10%	100%
2000-01	2,287	15	462	26,868	3,657	932	3,968	38,194
	6%	0%	1%	70%	10%	2%	10%	100%
2001-02*	1,721	720	371	20,741	3,858	487	3,872	31,758
	5%	2%	1%	65%	12%	2%	12%	100%

* Results are preliminary.

SUNFLOWER SHIPMENTS 1993-94 to 2001-02



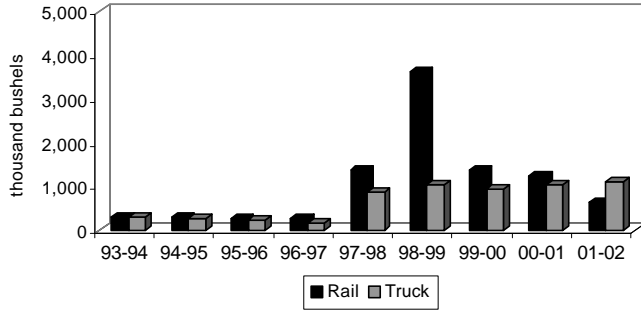
SUNFLOWER SHIPMENTS by month, 2000-01 to 2001-02



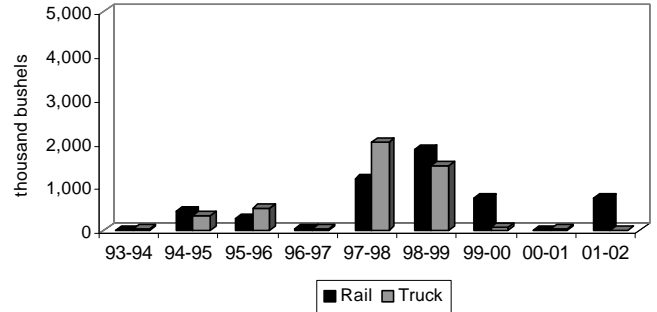
**NORTH DAKOTA SUNFLOWER SHIPMENTS
BY RAIL, TRUCK AND DESTINATION
thousand bu.**

YEAR	Minneapolis-St. Paul		Duluth-Superior		PNW		North Dakota		Other Minn. & Wisconsin		Midland & Gulf		Other		TOTAL	
	Rail	Truck	Rail	Truck	Rail	Truck	Rail	Truck	Rail	Truck	Rail	Truck	Rail	Truck	Rail	Truck
1993-94	303	283	0	11	2	46	284	4,398	53	329	20	195	229	1,290	890	6,553
	52%	48%	0%	100%	9%	91%	6%	94%	14%	86%	9%	91%	15%	85%	12%	88%
1994-95	481	252	443	334	14	105	858	8,305	824	383	128	225	922	1,740	2,904	11,074
	66%	34%	57%	43%	36%	64%	9%	91%	13%	87%	36%	64%	39%	61%	21%	79%
1995-96	268	243	278	507	43	93	206	7,883	42	480	32	199	279	1,302	1,147	10,708
	61%	39%	35%	65%	14%	86%	3%	97%	13%	87%	10%	90%	18%	82%	10%	90%
1996-97	265	170	10	20	1	23	275	7,438	60	404	25	210	172	845	807	9,110
	61%	39%	35%	65%	10%	90%	4%	96%	13%	87%	10%	90%	17%	83%	8%	92%
1997-98	1,378	865	1,158	2,021	5	275	1,587	35,047	605	3,069	69	543	894	2,270	5,696	44,090
	61%	39%	7%	93%	11%	89%	4%	96%	16%	84%	11%	89%	28%	72%	11%	88%
1998-99	3,622	1,042	1,830	1,480	9	343	3,302	31,854	520	3,512	36	535	1,718	2,543	11,034	41,286
	78%	22%	55%	45%	3%	97%	9%	91%	13%	87%	6%	94%	40%	60%	21%	79%
1999-00	1,387	925	723	66	46	314	2,340	27,496	161	3,980	43	507	1,276	2,792	5,977	36,075
	60%	40%	92%	8%	13%	87%	8%	92%	4%	96%	8%	92%	31%	69%	14%	86%
2000-01	1,250	1,037	0	15	47	415	2,828	24,040	117	3,540	4	928	643	3,325	4,887	33,307
	55%	45%	0%	100%	10%	90%	11%	89%	3%	97%	0%	100%	16%	84%	13%	87%
2001-02	628	1,093	717	3	4	367	2,349	18,392	185	3,673	30	457	644	3,558	4,556	27,202
	36%	64%	100%	0%	1%	99%	11%	89%	5%	95%	6%	94%	17%	83%	14%	86%

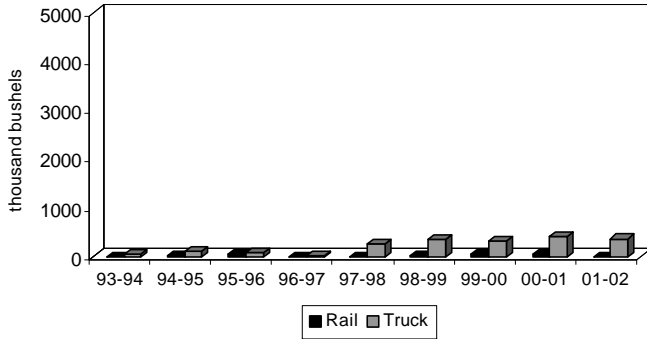
Sunflower to Minneapolis-St. Paul
1993-94 to 2001-02



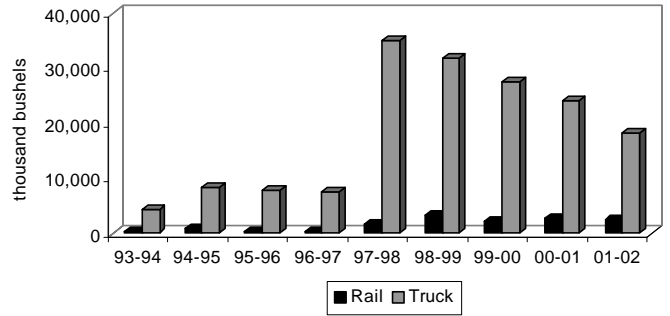
Sunflower to Duluth-Superior
1993-94 to 2001-02



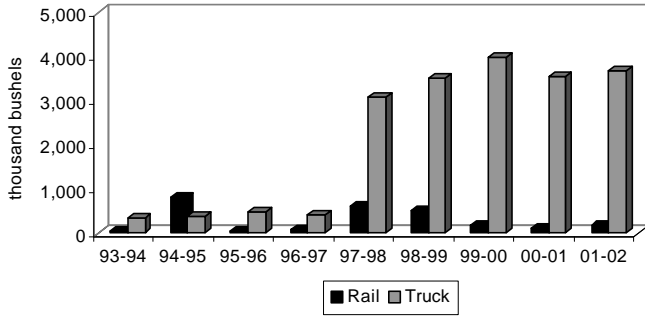
Sunflower to PNW
1993-94 to 2001-02



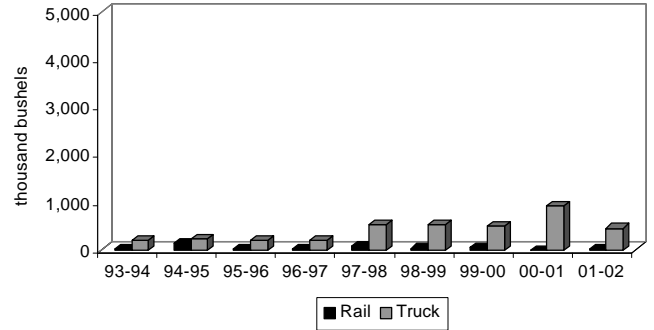
Sunflower to North Dakota
1993-94 to 2001-02



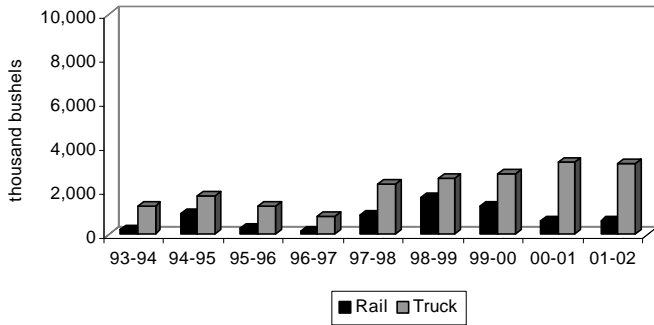
Sunflower to Other Minnesota & Wisconsin
1993-94 to 2001-02



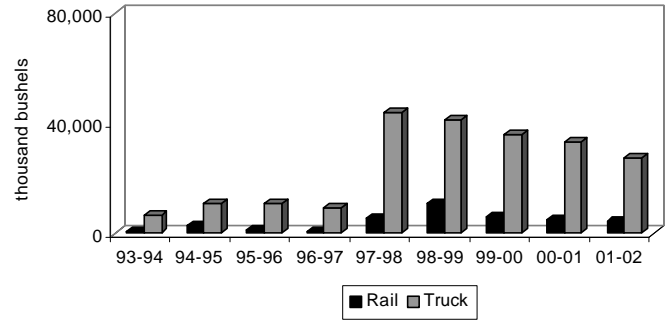
Sunflower to Midland & Gulf
1993-94 to 2001-02



Sunflower to Other Markets
1993-94 to 2001-02

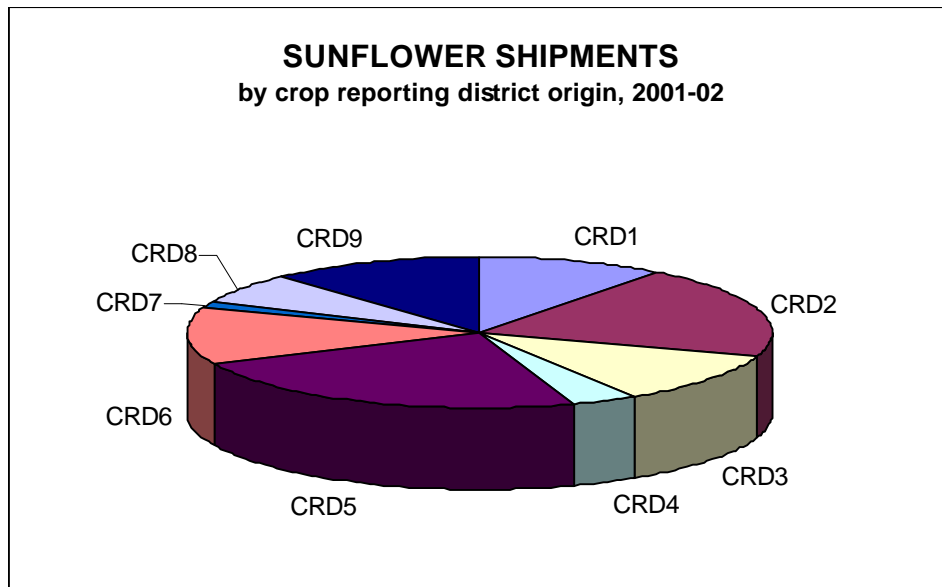


Total Sunflower Shipments
1993-94 to 2001-02



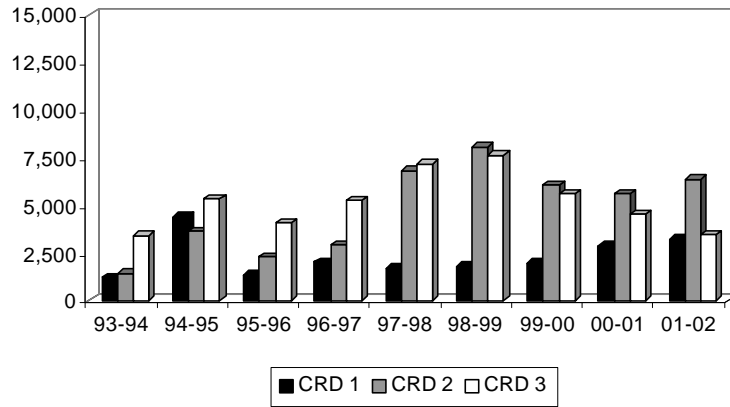
**NORTH DAKOTA SUNFLOWER SHIPMENTS
BY CROP REPORTING DISTRICT ORIGIN
thousand bu.**

YEAR	Crop Reporting District									TOTAL
	1	2	3	4	5	6	7	8	9	
1993-94	1,223	1,451	3,412	81	4,479	8,126	59	100	7,650	26,581
	5%	5%	13%	0%	17%	31%	0%	0%	29%	100%
1994-95	4,413	3,641	5,358	551	7,664	11,381	45	436	16,430	49,921
	9%	7%	11%	1%	15%	23%	0%	1%	33%	100%
1995-96	1,342	2,279	4,062	440	5,209	10,610	54	441	11,963	36,400
	4%	6%	11%	1%	14%	29%	0%	1%	33%	100%
1996-97	1,999	2,949	5,255	203	7,461	6,842	82	85	10,059	34,935
	6%	8%	15%	1%	21%	20%	0%	0%	29%	100%
1997-98	1,699	6,843	7,185	279	11,015	9,115	202	665	12,783	49,786
	3%	14%	14%	1%	22%	18%	1%	1%	26%	100%
1998-99	1,805	8,077	7,620	567	10,741	8,765	613	1,151	12,981	52,320
	3%	15%	15%	1%	21%	17%	1%	2%	25%	100%
1999-00	1,979	6,062	5,611	585	10,646	6,609	722	1,743	8,095	42,052
	5%	14%	13%	1%	25%	16%	2%	4%	19%	100%
2000-01		5,595	4,556	701	9,693	5,170	427	2,624	6,539	38,194
	8%	15%	12%	2%	25%	14%	1%	7%	17%	100%
2001-02	3,250	6,366	3,467	1,092	7,425	3,924	429	2,031	3,774	31,758
	10%	20%	11%	3%	23%	12%	1%	6%	12%	100%

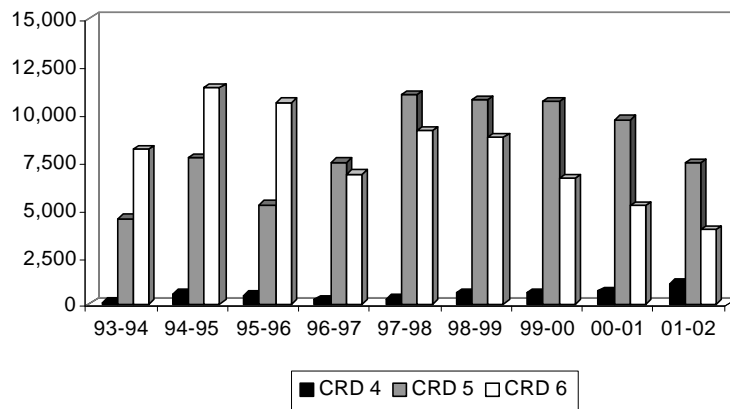


SUNFLOWER SHIPMENTS BY CROP REPORTING DISTRICT (Thousand Bushels)

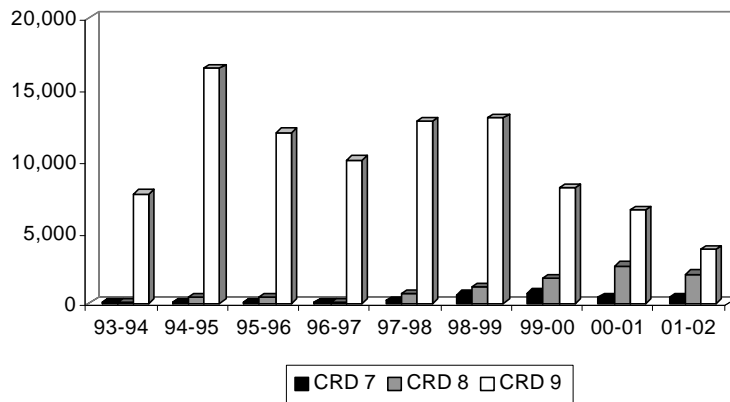
Northern Crop Reporting Districts



Central Crop Reporting Districts



Southern Crop Reporting Districts





***Oats
Shipments***

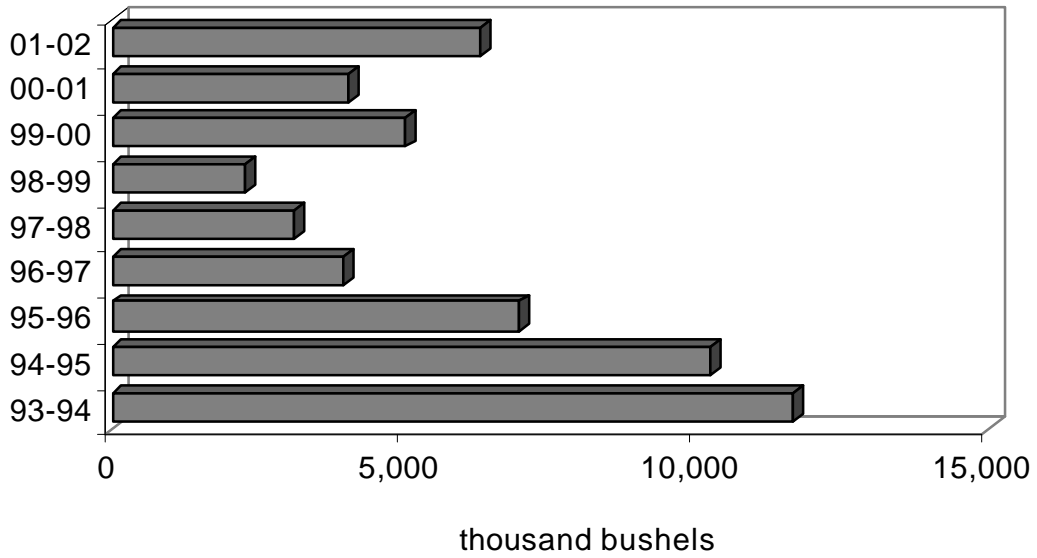
**NORTH DAKOTA OATS SHIPMENTS
BY DESTINATION
thousand bu.**

YEAR	Minneapolis- St. Paul	Duluth- Superior	PNW	North Dakota	Other Minn. & Wisconsin	Midland & Gulf	Other	TOTAL
1993-94	6,494	206	66	341	713	2,034	1,821	11,676
	56%	1%	0%	3%	6%	17%	16%	100%
1994-95	5,848	105	67	121	873	2,467	781	10,262
	57%	1%	1%	1%	9%	24%	8%	100%
1995-96	4,207	191	28	114	440	1,561	1,035	7,576
	56%	3%	0%	2%	6%	21%	14%	100%
1996-97	1,822	83	6	50	347	690	969	3,967
	46%	2%	0%	1%	9%	17%	24%	100%
1997-98	1,503	102	92	81	99	667	585	3,128
	48%	3%	3%	3%	3%	21%	19%	100%
1998-99	715	20	53	47	67	392	978	2,273
	31%	1%	2%	2%	3%	17%	43%	100%
1999-00	1,047	18	2	99	429	2,556	883	5,034
	21%	0%	0%	2%	9%	51%	18%	100%
2000-01	276	0	14	97	1,107	2,388	148	4,031
	7%	0%	0%	2%	27%	59%	4%	100%
2001-02*	1,037	2	550	183	434	2,330	1,765	6,299
	16%	0%	9%	3%	7%	37%	28%	100%

* Results are preliminary.

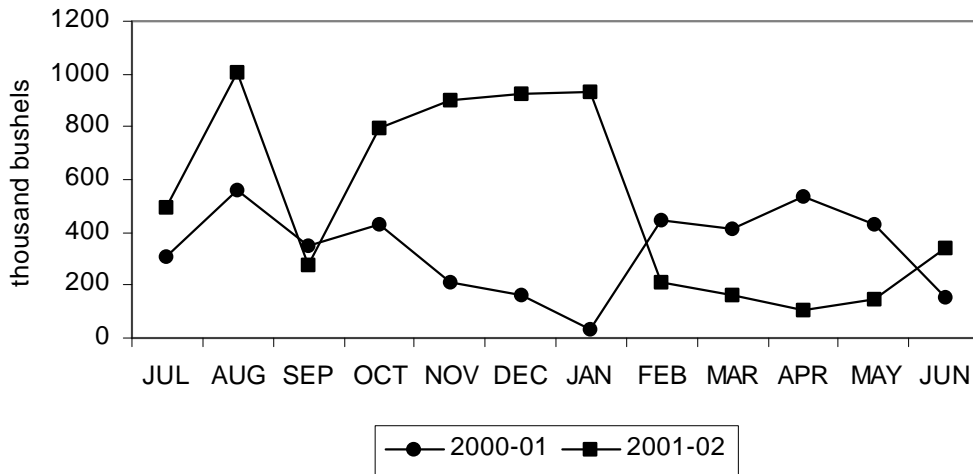
OATS SHIPMENTS

1993-94 to 2001-02



OATS SHIPMENTS

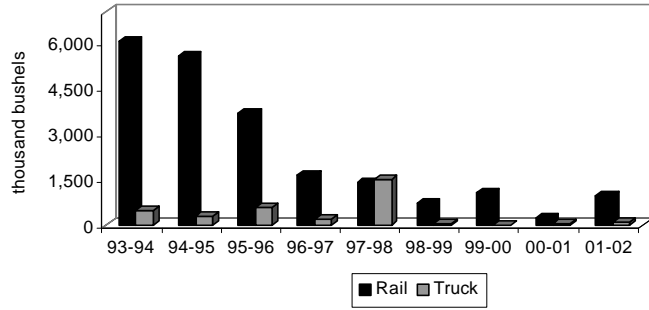
by month, 2000-01 to 2001-02



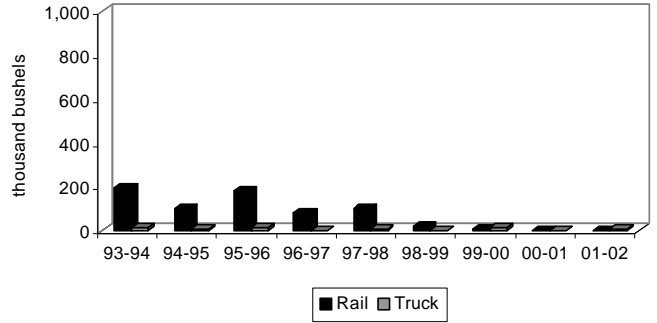
**NORTH DAKOTA OATS SHIPMENTS
BY RAIL, TRUCK AND DESTINATION
thousand bu.**

YEAR	Minneapolis-St. Paul		Duluth-Superior		PNW		North Dakota		Other Minn. & Wisconsin		Midland & Gulf		Other		TOTAL	
	Rail	Truck	Rail	Truck	Rail	Truck	Rail	Truck	Rail	Truck	Rail	Truck	Rail	Truck	Rail	Truck
1993-94	6,021	473	195	11	40	27	0	341	337	376	1,419	615	840	981	8,852	2,824
	93%	7%	95%	5%	61%	39%	0%	100%	47%	53%	70%	30%	46%	54%	76%	24%
1994-95	5,546	302	98	7	52	15	9	112	602	271	1,539	928	414	367	8,261	2,001
	95%	5%	93%	7%	78%	22%	7%	93%	69%	31%	62%	38%	53%	47%	81%	19%
1995-96	3,646	561	181	10	25	3	25	89	162	278	842	719	647	388	5,529	2,047
	87%	13%	95%	5%	89%	11%	22%	78%	37%	63%	54%	46%	63%	37%	73%	27%
1996-97	1,646	176	82	1	5	1	0	50	116	231	286	404	769	200	2,906	1,061
	90%	10%	99%	1%	83%	17%	0%	100%	33%	67%	41%	59%	79%	21%	73%	27%
1997-98	1,374	1,503	97	5	90	2	35	46	19	80	224	443	421	164	2,258	870
	91%	9%	95%	5%	98%	2%	43%	57%	19%	81%	34%	66%	72%	28%	72%	28%
1998-99	700	15	20	0	0	53	0	47	5	62	43	349	889	90	16,567	617
	98%	2%	100%	0%	0%	100%	0%	100%	7%	93%	11%	89%	91%	9%	73%	27%
1999-00	1,402	5	5	13	0	2	9	90	362	66	2,414	143	828	56	4,660	374
	100%	0%	28%	72%	0%	100%	9%	91%	85%	15%	94%	6%	94%	6%	93%	7%
2000-01	224	52	0	0	14	0	19	78	1,079	28	2,244	144	72	76	3,653	378
	81%	19%	0%	0%	100%	0%	20%	80%	97%	3%	94%	6%	48%	52%	91%	9%
2001-02	938	99	0	2	529	21	7	176	383	52	2,182	148	1,611	153	5,649	650
	90%	10%	0%	100%	96%	4%	4%	96%	88%	12%	94%	6%	91%	9%	90%	10%

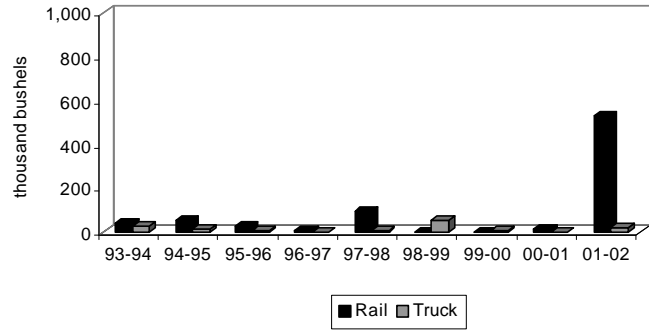
Oats to Minneapolis-St. Paul
1993-94 to 2001-02



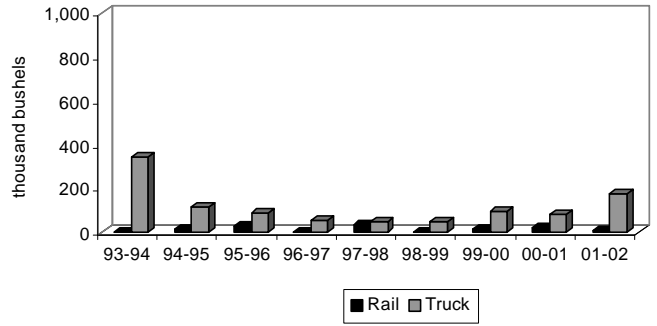
Oats to Duluth-Superior
1993-94 to 2001-02



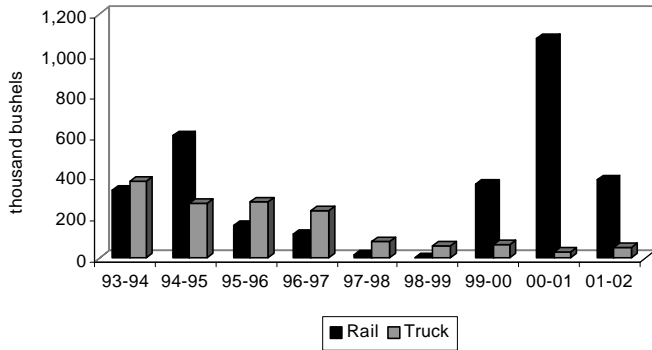
Oats to PNW
1993-94 to 2001-02



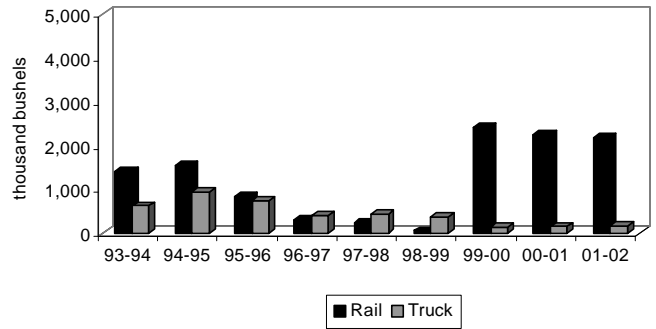
Oats to North Dakota
1993-94 to 2001-02



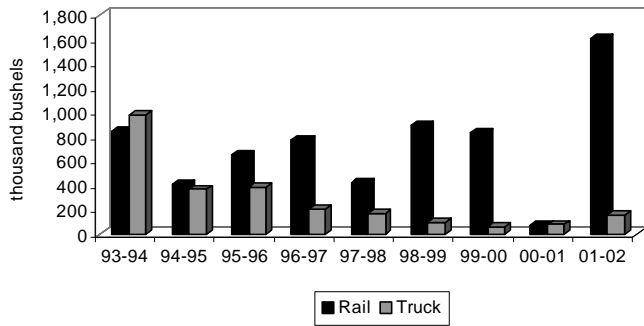
Oats to Other Minnesota & Wisconsin
1993-94 to 2001-02



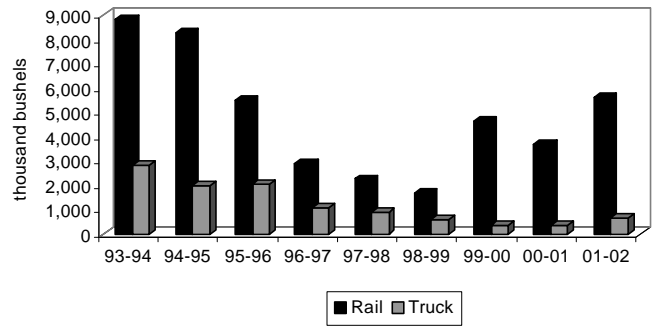
Oats to Midland & Gulf
1993-94 to 2001-02



Oats to Other Markets
1993-94 to 2001-02

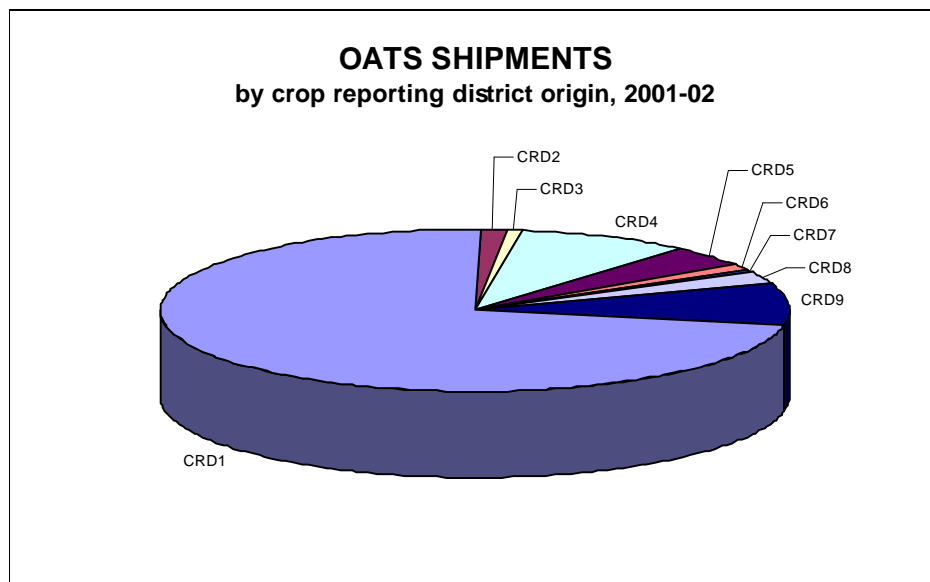


Total Oats Shipments
1993-94 to 2001-02



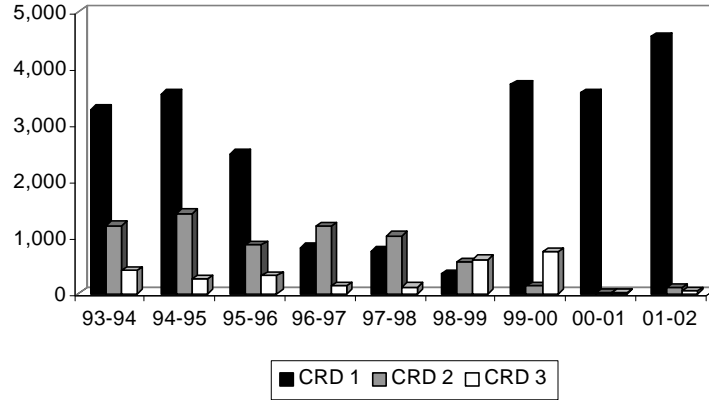
**NORTH DAKOTA OATS SHIPMENTS
BY CROP REPORTING DISTRICT ORIGIN
thousand bu.**

YEAR	Crop Reporting District									TOTAL
	1	2	3	4	5	6	7	8	9	
1993-94	3,273	1,211	409	1,646	1,539	455	337	1,182	1,624	11,676
	28%	10%	4%	14%	13%	4%	3%	10%	14%	100%
1994-95	3,544	1,426	260	1,540	968	79	276	974	1,195	10,262
	35%	14%	3%	15%	9%	1%	3%	10%	12%	100%
1995-96	2,488	871	318	1,046	465	66	335	602	777	6,968
	36%	13%	5%	15%	7%	0%	5%	9%	11%	100%
1996-97	855	1,205	144	599	318	63	106	179	499	3,967
	22%	30%	4%	15%	8%	2%	3%	5%	13%	100%
1997-98	755	1,036	120	447	178	180	62	20	323	3,122
	24%	33%	4%	14%	6%	6%	2%	1%	10%	100%
1998-99	350	556	605	301	64	28	37	103	229	2,273
	16%	25%	27%	13%	3%	1%	2%	5%	10%	100%
1999-00	3,704	144	741	79	76	48	0	95	147	5,034
	74%	3%	15%	2%	2%	1%	0%	2%	3%	100%
2000-01	3,558	11	25	126	35	24	17	86	149	4,031
	88%	0%	1%	3%	1%	1%	0%	2%	4%	100%
2001-02	4,563	100	51	545	263	71	45	154	507	6,299
	72%	2%	1%	9%	4%	1%	1%	2%	8%	100%

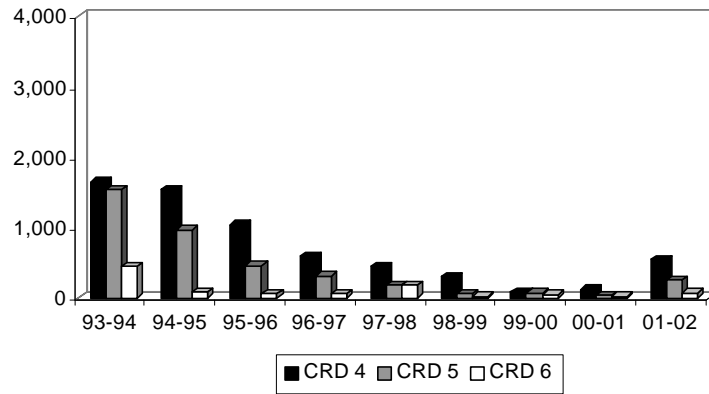


OATS SHIPMENTS BY CROP REPORTING DISTRICT (Thousand Bushels)

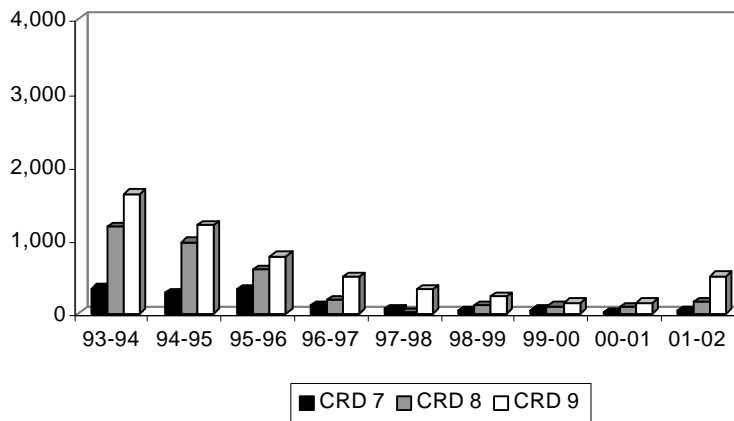
Northern Crop Reporting Districts

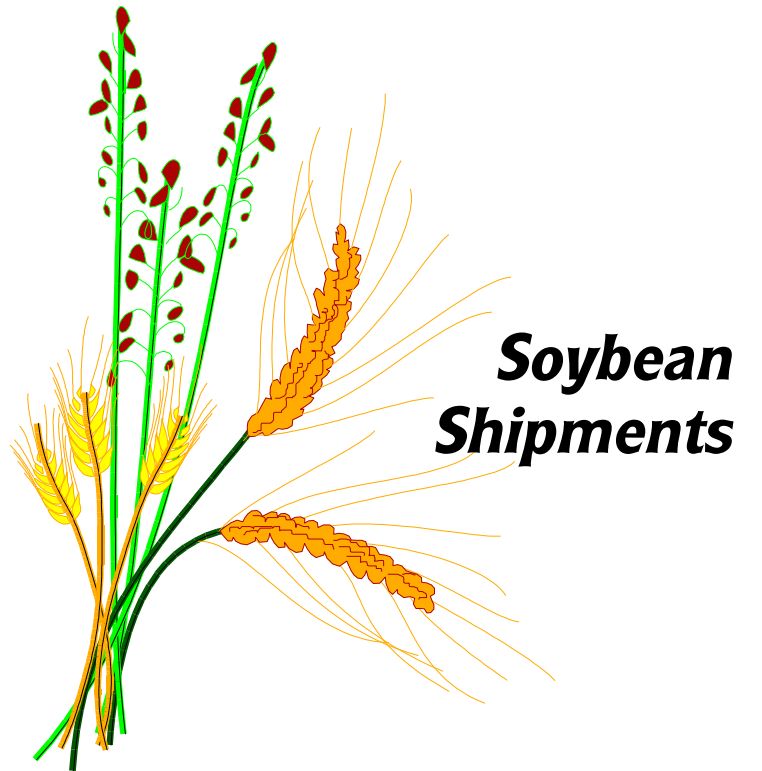


Central Crop Reporting Districts



Southern Crop Reporting Districts



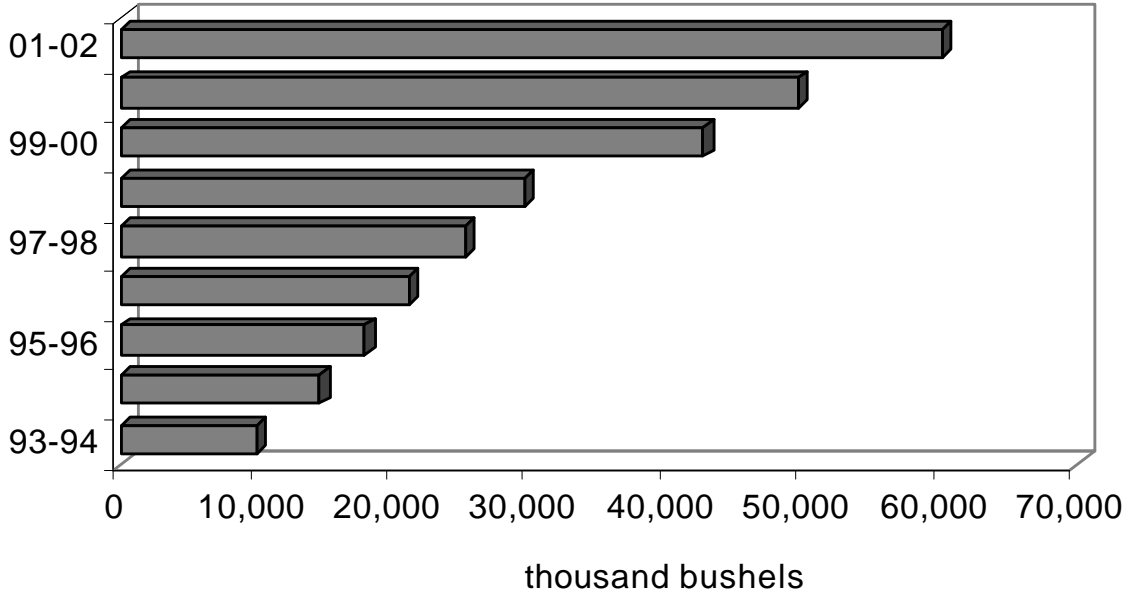


**NORTH DAKOTA SOYBEAN SHIPMENTS
BY DESTINATION
thousand bu.**

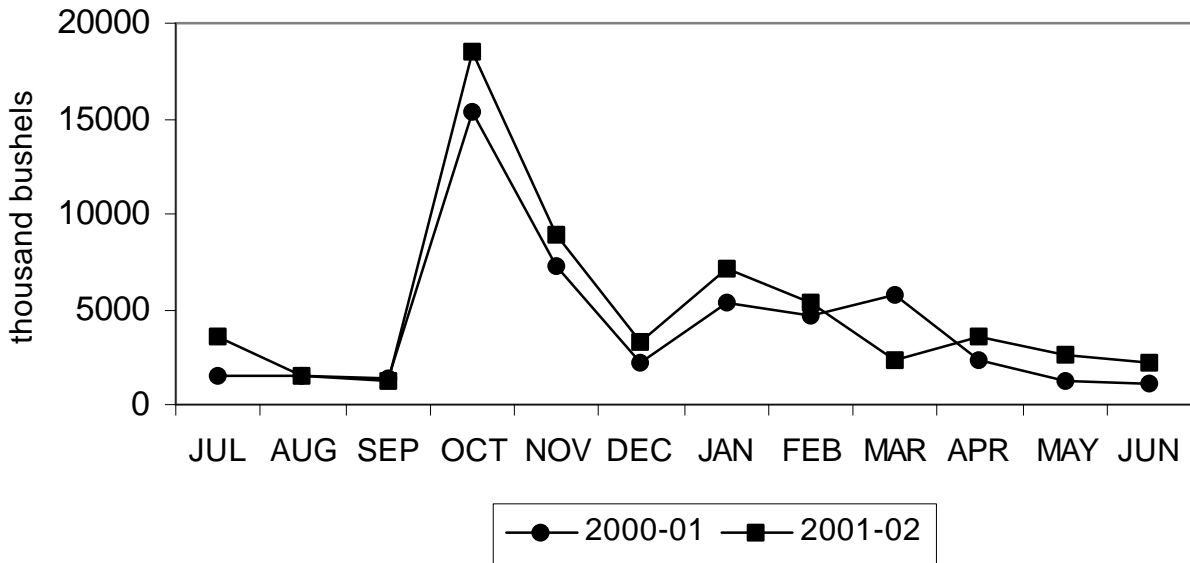
YEAR	Minneapolis- St. Paul	Duluth- Superior	PNW	North Dakota	Other Minn. & Wisconsin	Midland & Gulf	Other	TOTAL
1993-94	3,198	621	3,669	693	218	781	719	9,898
	32%	6%	37%	7%	2%	8%	7%	100%
1994-95	2,825	3,110	6,806	373	568	121	792	14,594
	19%	21%	47%	3%	4%	1%	5%	100%
1995-96	4,207	191	28	114	440	1,561	1,035	7,576
	56%	3%	0%	2%	6%	21%	14%	100%
1996-97	1,607	8,252	5,809	2,523	486	17	2,542	21,236
	8%	39%	27%	12%	2%	0%	12%	100%
1997-98	4,395	9,210	4,751	2,292	718	813	3,044	25,223
	17%	37%	19%	9%	3%	3%	12%	100%
1998-99	6,708	12,978	3,516	976	1,125	854	3,368	29,526
	23%	44%	12%	3%	4%	3%	11%	100%
1999-00	5,415	20,573	8,393	660	1,099	950	5,577	42,668
	13%	48%	20%	2%	3%	2%	13%	100%
2000-01	5,386	13,523	17,296	1,626	1,986	2,129	7,670	49,617
	11%	27%	35%	3%	4%	4%	15%	100%
2001-02*	5,865	13,358	20,644	5,571	5,157	1,219	8,340	60,153
	10%	22%	34%	9%	9%	2%	14%	100%

*Results are preliminary.

SOYBEAN SHIPMENTS 1993-94 to 2001-02



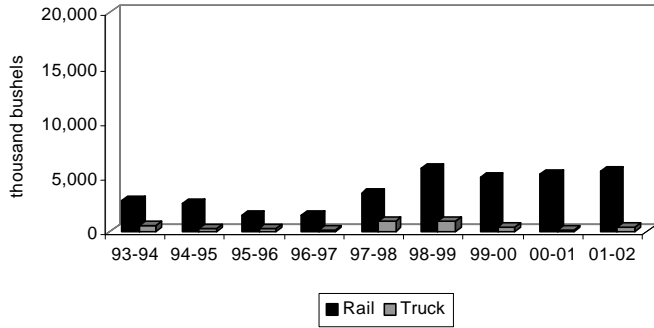
SOYBEAN SHIPMENTS by month, 2000-01 to 2001-02



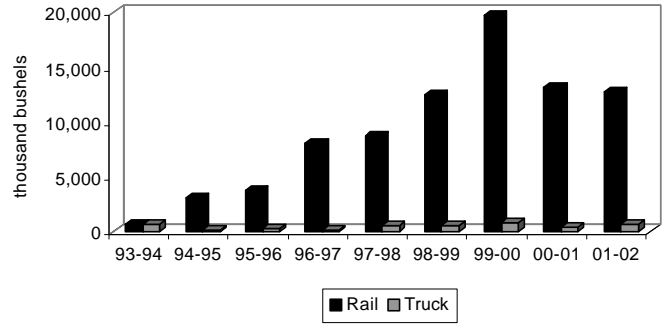
**NORTH DAKOTA SOYBEAN SHIPMENTS
BY RAIL, TRUCK AND DESTINATION
thousand bu.**

YEAR	Minneapolis-St. Paul		Duluth-Superior		PNW		North Dakota		Other Minn. & Wisconsin		Midland & Gulf		Other		TOTAL	
	Rail	Truck	Rail	Truck	Rail	Truck	Rail	Truck	Rail	Truck	Rail	Truck	Rail	Truck	Rail	Truck
1993-94	2,738	460	614	621	3,666	3	425	268	48	170	769	12	613	106	8,872	1,026
	86%	14%	99%	1%	99%	1%	61%	39%	22%	78%	98%	2%	85%	15%	99%	1%
1994-95	2,552	273	3,047	63	6,542	264	184	189	321	247	102	19	684	108	13,432	1,163
	90%	10%	98%	2%	96%	4%	49%	51%	57%	43%	84%	16%	86%	14%	92%	8%
1995-96	1,421	183	3,710	270	11,674	2	222	754	218	141	425	38	1,586	117	19,256	1,448
	89%	11%	94%	6%	99%	1%	23%	77%	61%	39%	92%	8%	93%	7%	93%	7%
1996-97	1,477	130	8,112	140	5,789	20	219	2,304	421	65	10	7	2,381	161	18,409	2,827
	92%	8%	98%	2%	99%	1%	9%	91%	87%	13%	59%	41%	94%	6%	87%	13%
1997-98	3,508	887	8,673	537	4,734	17	167	2,125	253	465	769	44	2,717	327	20,821	4,402
	80%	20%	94%	6%	99%	1%	7%	93%	35%	65%	95%	5%	89%	11%	83%	17%
1998-99	1,493	72	7,001	11	9,150	27	3,154	5,705	135	295	1,626	283	3,746	3,187	26,305	9,580
	95%	5%	100%	0%	100%	0%	36%	64%	31%	69%	85%	15%	54%	46%	73%	27%
1999-00	4,981	434	19,771	802	8,366	27	57	603	608	491	919	31	4,966	611	39,668	2,999
	92%	8%	96%	4%	100%	0%	9%	91%	55%	45%	97%	3%	89%	11%	93%	7%
2000-01	5,268	118	13,200	324	17,079	217	121	1,505	1,111	875	2,124	5	7,118	552	46,021	3,596
	98%	2%	98%	2%	99%	1%	7%	93%	56%	44%	100%	0%	93%	7%	93%	7%
2001-02	5,540	325	12,760	598	20,513	131	607	4,964	3,398	1,759	1,149	70	7,969	371	51,934	8,219
	94%	6%	96%	4%	99%	1%	11%	89%	66%	34%	94%	6%	96%	4%	86%	14%

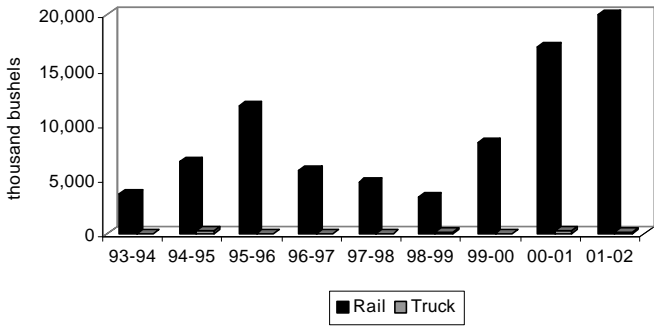
Soybeans to Minneapolis-St. Paul
1993-94 to 2001-02



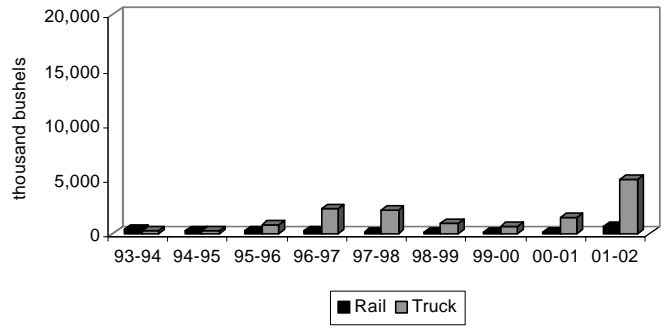
Soybeans to Duluth-Superior
1993-94 to 2001-02



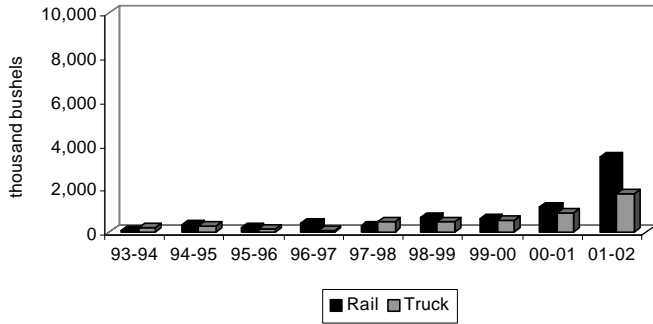
Soybeans to PNW
1993-94 to 2001-02



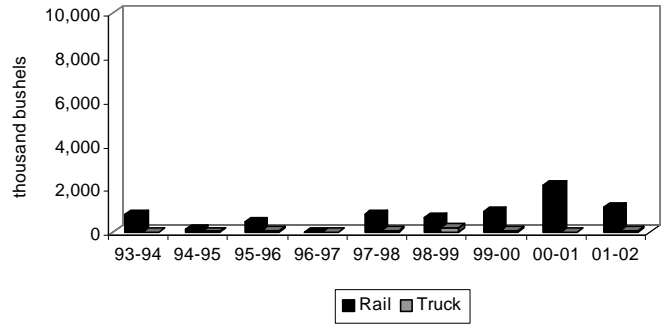
Soybeans to North Dakota
1993-94 to 2001-02



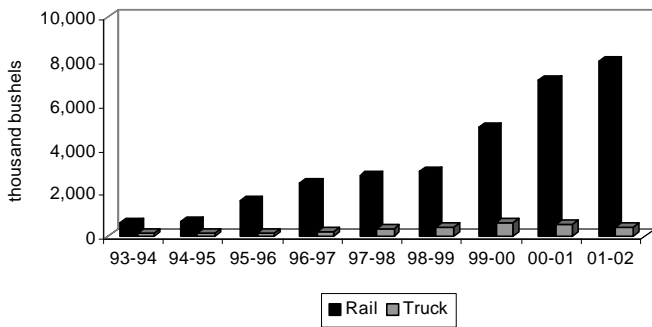
Soybeans to Other Minnesota & Wisconsin
1993-94 to 2001-02



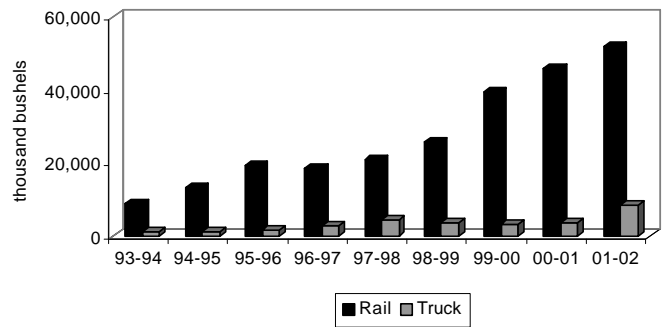
Soybeans to Midland & Gulf
1993-94 to 2001-02



Soybeans to Other Markets
1993-94 to 2001-02

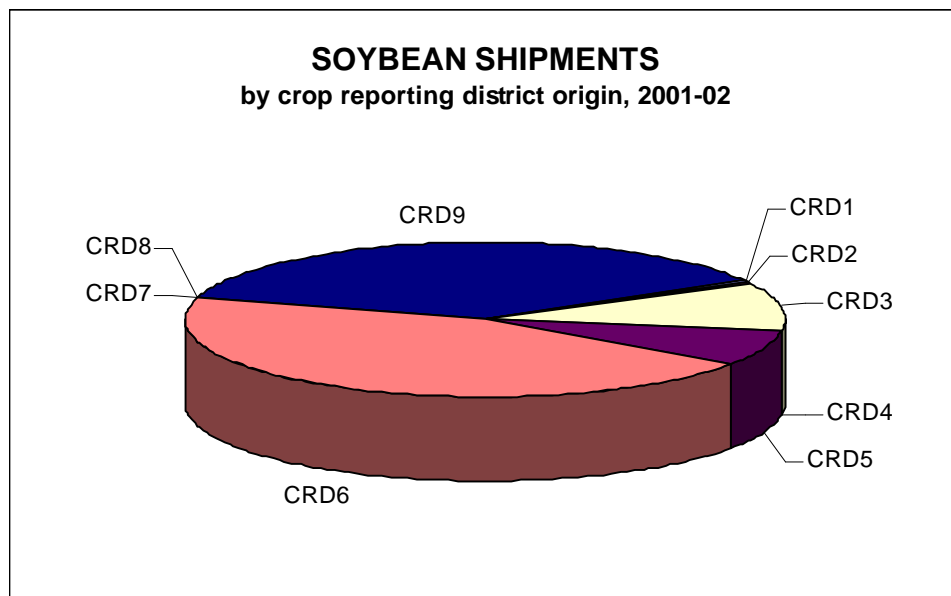


Total Soybean Shipments
1993-94 to 2001-02



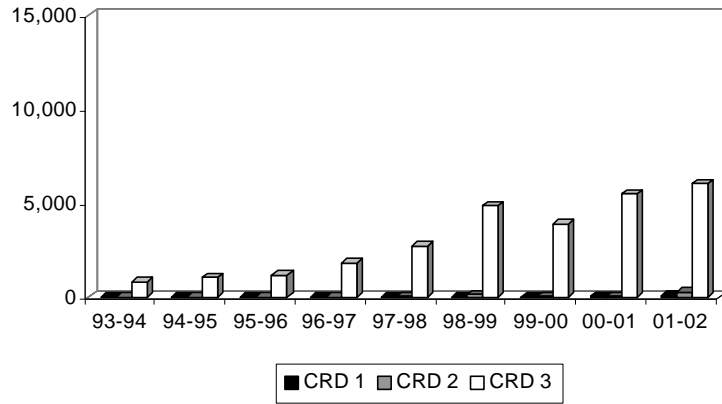
**NORTH DAKOTA SOYBEAN SHIPMENTS
BY CROP REPORTING DISTRICT ORIGIN**
thousand bu.

YEAR	Crop Reporting District									TOTAL
	1	2	3	4	5	6	7	8	9	
1993-94	4	0	827	0	22	4,986	0	0	4,059	9,898
	0%	0%	8%	0%	0%	50%	0%	0%	41%	100%
1994-95	0	5	1,057	0	15	7,818	0	0	5,700	14,594
	0%	0%	7%	0%	0%	54%	0%	0%	39%	100%
1995-96	1	12	1,175	0	63	8,543	0	0	8,071	17,865
	0%	0%	7%	0%	0%	48%	0%	0%	45%	100%
1996-97	7	5	1,833	1	140	11,105	0	0	8,006	21,097
	0%	0%	9%	0%	1%	53%	0%	0%	38%	100%
1997-98	0	58	2,736	26	247	11,717	3	8	10,429	25,223
	0%	0%	11%	0%	1%	46%	0%	0%	42%	100%
1998-99	0	122	4,844	14	539	139,497	4	93	9,961	29,526
	0%	0%	16%	0%	2%	47%	0%	0%	34%	100%
1999-00	7	33	3,909	6	462	20,765	9	85	17,393	42,668
	0%	0%	9%	0%	1%	49%	0%	0%	41%	100%
2000-01	62	50	5,493	29	1,901	22,468	25	130	19,459	49,617
	0%	0%	11%	0%	4%	45%	0%	0%	39%	100%
2001-02	97	274	6,071	91	4,404	26,821	3	186	22,205	60,153
	0%	0%	10%	0%	7%	45%	0%	0%	37%	100%

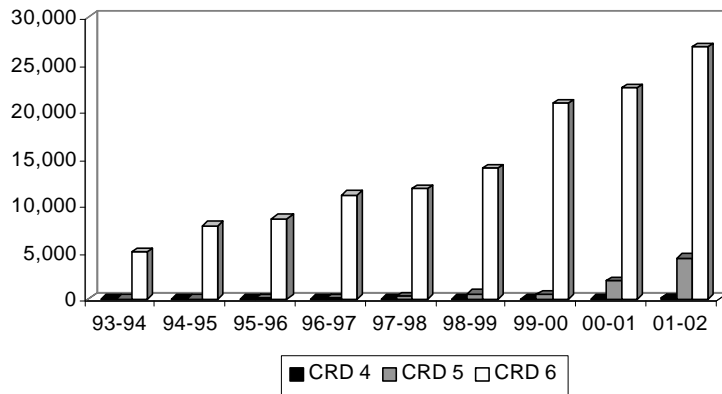


SOYBEAN SHIPMENTS BY CROP REPORTING DISTRICT (Thousand Bushels)

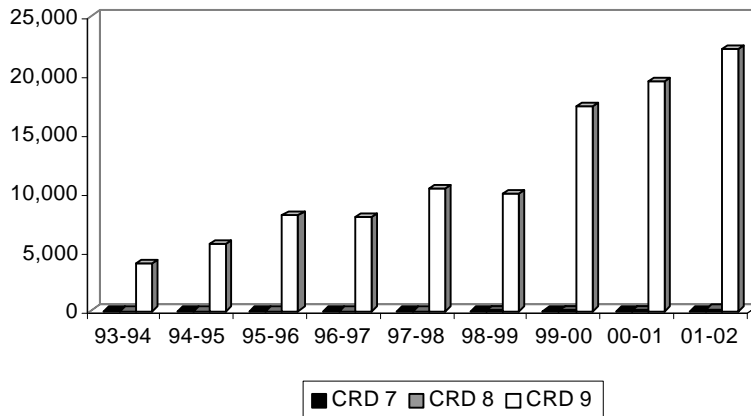
Northern Crop Reporting Districts

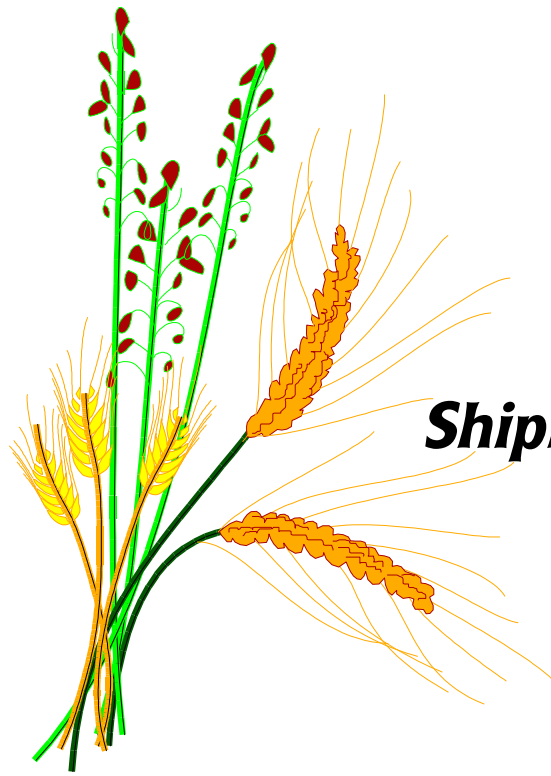


Central Crop Reporting Districts



Southern Crop Reporting Districts





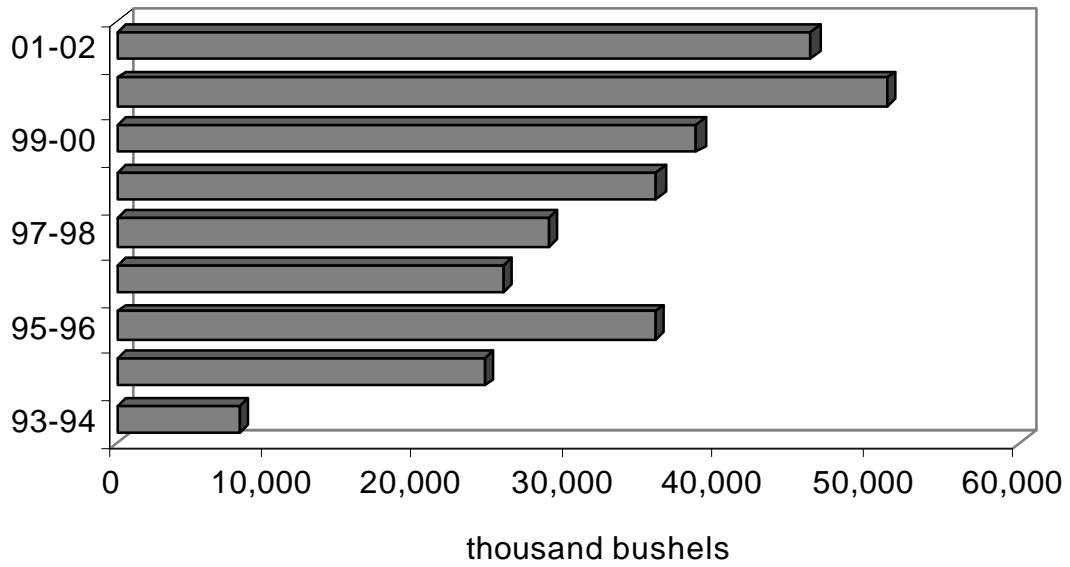
***Corn
Shipments***

**NORTH DAKOTA CORN SHIPMENTS
BY DESTINATION
thousand bu.**

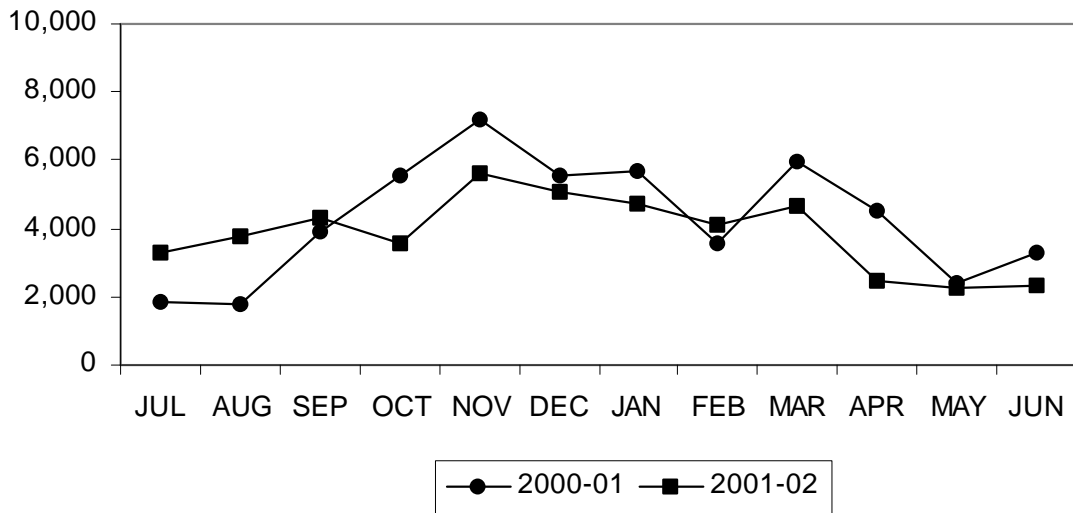
YEAR	Minneapolis- St. Paul	Duluth- Superior	PNW	North Dakota	Other Minn. & Wisconsin	Midland & Gulf	Other	TOTAL
1993-94	196	75	1,465	3,779	530	574	1,546	8,167
	3%	1%	19%	50%	7%	7%	20%	100%
1994-95	1,150	114	13,703	4,992	357	1,410	2,672	24,398
	5%	0%	60%	22%	2%	6%	12%	100%
1995-96	2,196	24	25,947	2,049	220	1,576	3,709	35,722
	6%	0%	73%	6%	1%	4%	10%	100%
1996-97	2,253	514	13,687	3,399	432	1,131	4,220	25,637
	9%	2%	56%	14%	2%	4%	17%	100%
1997-98	3,304	1,074	12,851	2,678	565	2,317	5,853	28,643
	12%	4%	45%	9%	2%	8%	20%	100%
1998-99	1,565	7,012	9,177	8,859	430	1,909	6,934	35,886
	4%	20%	26%	25%	1%	5%	19%	100%
1999-00	3,904	5,577	13,084	4,401	1,145	1,273	9,141	38,525
	10%	14%	34%	11%	3%	3%	24%	100%
2000-01	3,435	3,417	13,604	8,435	2,559	4,585	15,094	51,130
	7%	7%	27%	16%	5%	9%	30%	100%
2001-02*	2,776	315	5,447	8,743	2,048	1,658	25,092	46,079
	6%	1%	12%	19%	4%	4%	54%	100%

*Results are preliminary.

CORN SHIPMENTS 1993-94 to 2001-02



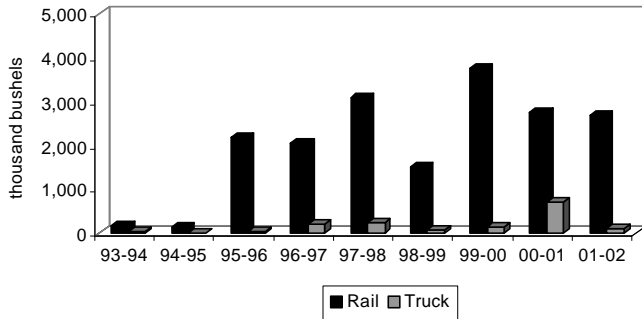
CORN SHIPMENTS by month, 2000-01 to 2001-02



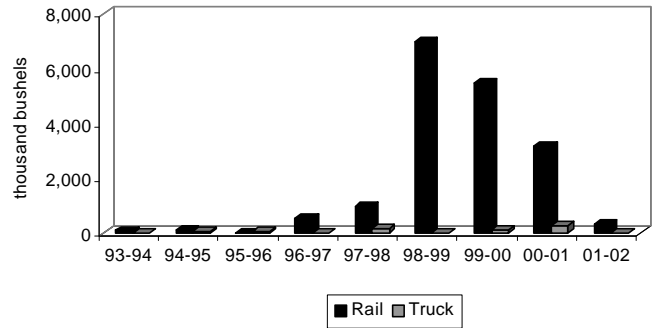
**NORTH DAKOTA CORN SHIPMENTS
BY RAIL, TRUCK AND DESTINATION
thousand bu.**

YEAR	Minneapolis-St. Paul		Duluth-Superior		PNW		North Dakota		Other Minn. & Wisconsin		Midland & Gulf		Other		TOTAL	
	Rail	Truck	Rail	Truck	Rail	Truck	Rail	Truck	Rail	Truck	Rail	Truck	Rail	Truck	Rail	Truck
1993-94	161	35	69	6	1,451	14	125	3,654	0	530	165	409	498	1,048	2,472	5,695
	82%	18%	92%	8%	99%	1%	3%	97%	0%	100%	29%	71%	32%	68%	30%	70%
1994-95	111	3	97	17	13,699	4	526	4,466	78	279	1,040	370	884	1,788	17,471	6,927
	100%	0%	85%	15%	74%	26%	100%	0%	22%	78%	74%	26%	11%	89%	72%	28%
1995-96	2,167	29	0	24	25,232	715	542	1,507	95	125	1,298	278	2,173	1,536	31,558	4,214
	99%	1%	0%	100%	74%	26%	100%	0%	43%	57%	82%	18%	26%	74%	88%	12%
1996-97	2,052	201	508	6	13,674	13	1,224	2,175	18	414	711	420	2,311	1,909	20,498	5,139
	91%	9%	99%	1%	63%	37%	100%	0%	4%	96%	63%	37%	36%	64%	80%	20%
1997-98	3,081	223	942	132	12,642	209	734	1,944	9	556	1,800	517	3,468	2,385	22,676	5,967
	93%	7%	88%	12%	78%	22%	98%	2%	2%	98%	78%	22%	27%	73%	79%	21%
1998-99	1,493	72	7,001	11	9,150	27	3,154	5,705	135	295	1,626	283	3,746	3,187	26,305	9,580
	95%	5%	100%	0%	100%	0%	36%	64%	31%	69%	85%	15%	54%	46%	73%	27%
1999-00	3,766	138	5,502	76	12,976	108	2,269	2,132	848	297	802	470	3,629	5,512	29,791	8,734
	96%	4%	99%	1%	99%	1%	52%	48%	74%	26%	63%	37%	40%	60%	77%	23%
2000-01	2,747	688	3,179	238	13,531	73	1,749	6,686	2,020	538	3,965	620	11,208	3,886	38,400	12,730
	80%	20%	93%	7%	99%	1%	21%	79%	79%	21%	86%	14%	74%	26%	75%	25%
2001-02	2,669	106	314	1	5,410	37	2,211	6,532	1,424	624	1,223	435	17,337	7,756	30,588	15,492
	96%	4%	100%	0%	99%	1%	25%	75%	70%	30%	74%	26%	69%	31%	66%	34%

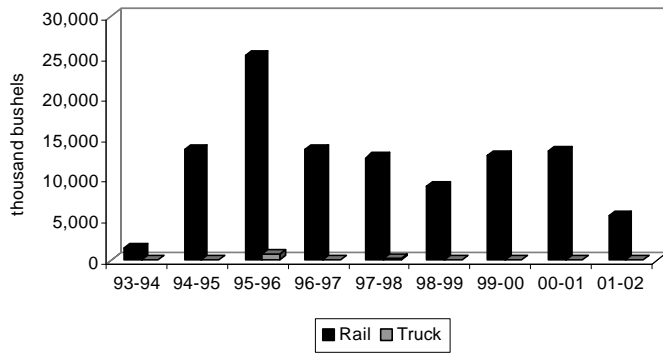
Corn to Minneapolis-St. Paul
1993-94 to 2001-02



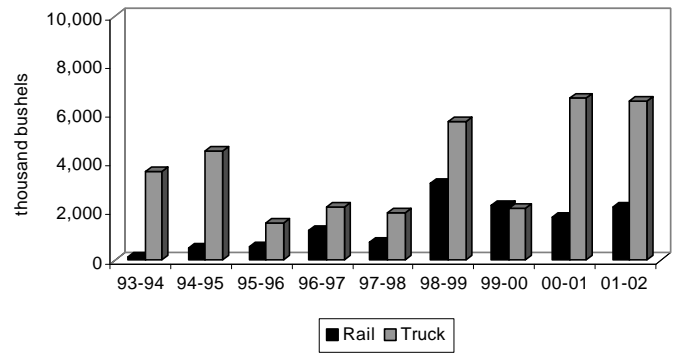
Corn to Duluth-Superior
1993-94 to 2001-02



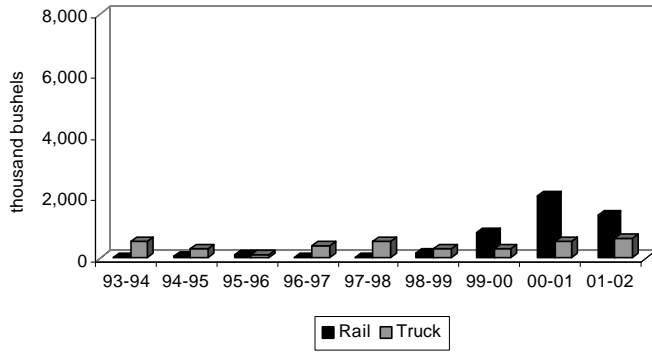
Corn to PNW
1993-94 to 2001-02



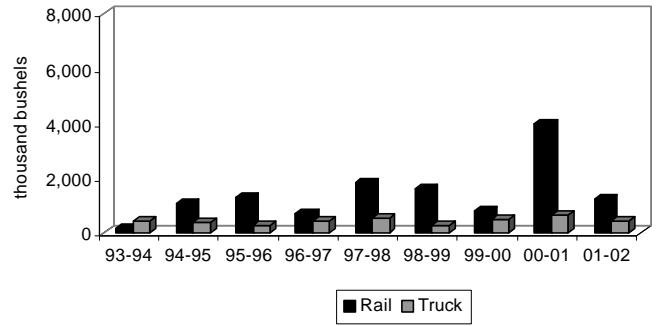
Corn to North Dakota
1993-94 to 2001-02



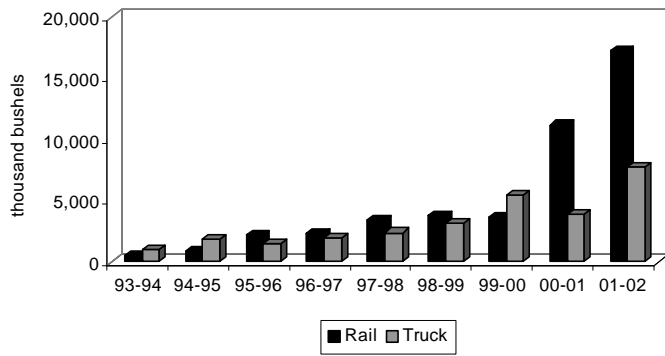
Corn to Other Minnesota & Wisconsin
1993-94 to 2001-02



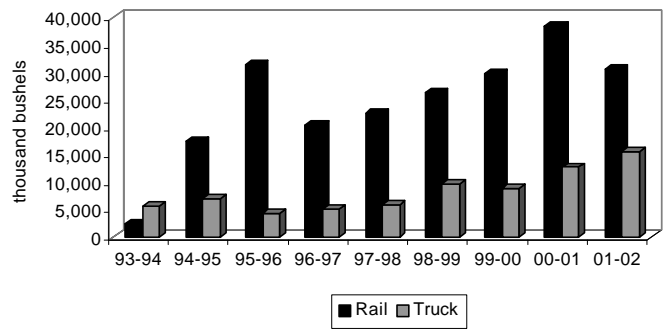
Corn to Midland & Gulf
1993-94 to 2001-02



Corn to Other Markets
1993-94 to 2001-02

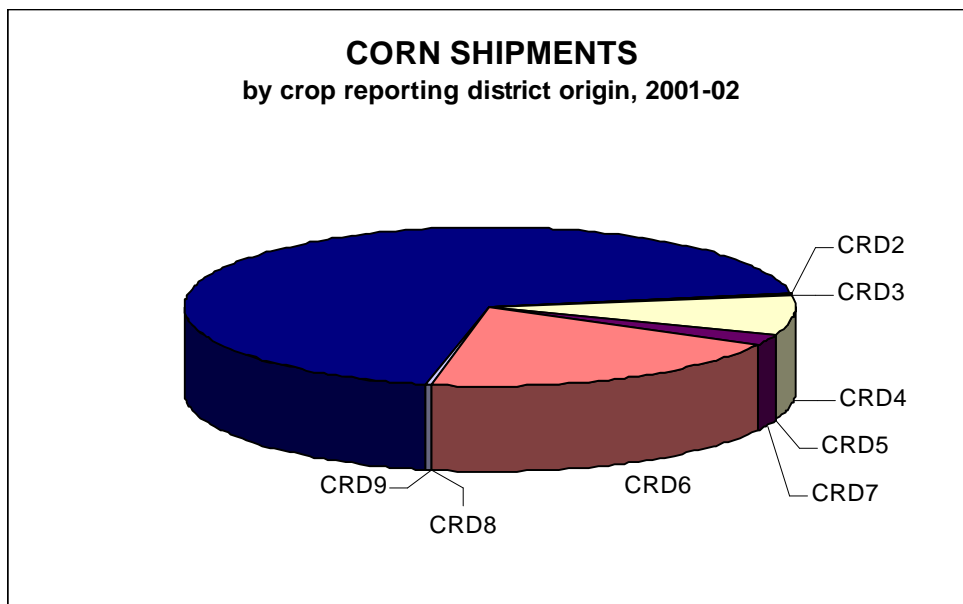


Total Corn Shipments
1993-94 to 2001-02



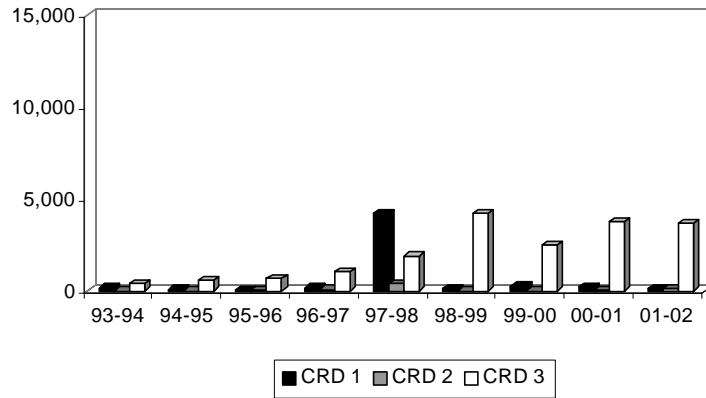
**NORTH DAKOTA CORN SHIPMENTS
BY CROP REPORTING DISTRICT
thousand bu.**

YEAR	Crop Reporting District									TOTAL
	1	2	3	4	5	6	7	8	9	
1993-94	173	10	389	12	20	1,738	0	149	5,676	8,167
	2%	0%	5%	0%	0%	21%	0%	2%	69%	100%
1994-95	108	7	621	12	115	6,636	0	26	16,873	24,398
	0%	0%	3%	0%	0%	27%	0%	0%	69%	100%
1995-96	74	45	662	9	130	7,621	2	71	23,928	32,542
	0%	0%	2%	0%	0%	23%	0%	0%	74%	100%
1996-97	192	100	1,032	30	218	7,770	0	0	15,845	25,187
	1%	0%	4%	0%	1%	31%	0%	0%	63%	100%
1997-98	4,259	387	1,904	7	72	7,553	5	0	18,655	32,842
	13%	1%	6%	0%	0%	23%	0%	0%	57%	100%
1998-99	161	15	4,215	2	398	12,477	2	NA	18,616	35,886
	0%	0%	12%	0%	1%	35%	0%	NA	53%	100%
1999-00	283	18	2,438	NA	429	9,365	0	NA	25,992	38,525
	1%	0%	6%	NA	1%	24%	0%	NA	67%	100%
2000-01	222	35	3,751	18	919	14,284	NA	28	31,872	51,130
	0%	0%	7%	0%	2%	28%	NA	0%	62%	100%
2001-02	153	124	3,714	20	985	9,181	16	199	31,688	46,079
	0%	0%	8%	0%	2%	20%	0%	0%	69%	100%

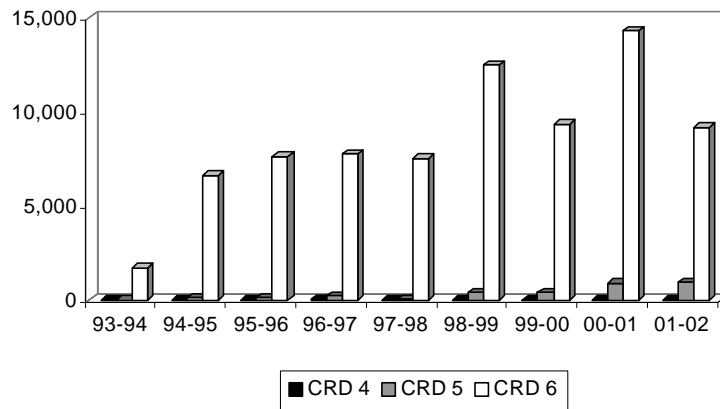


CORN SHIPMENTS BY CROP REPORTING DISTRICT (Thousand Bushels)

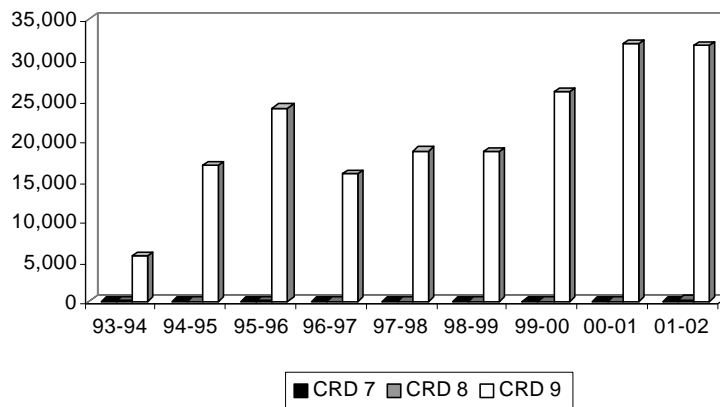
Northern Crop Reporting Districts



Central Crop Reporting Districts



Southern Crop Reporting Districts





**Canola
Shipments**

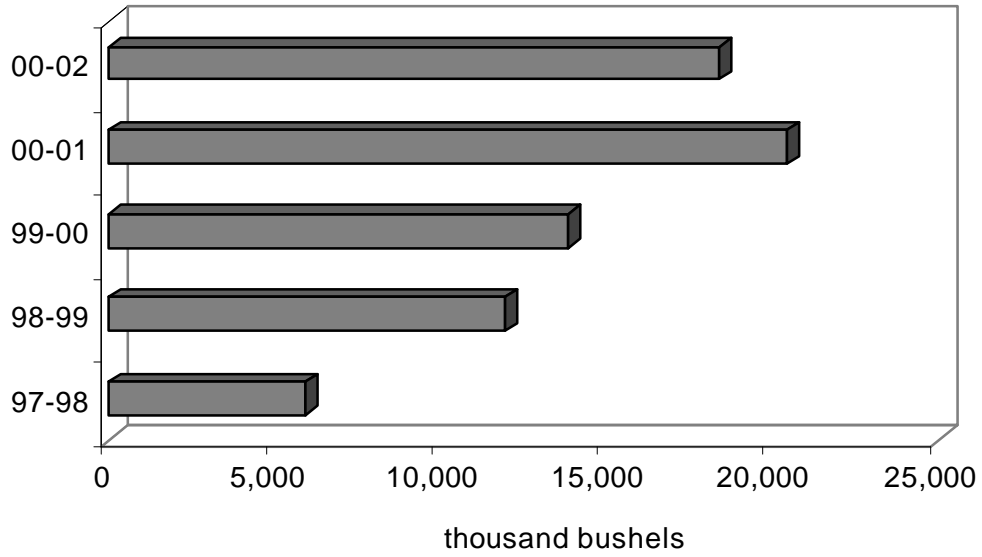
**NORTH DAKOTA CANOLA SHIPMENTS
BY DESTINATION
thousand bu.**

YEAR	Minneapolis- St. Paul	Duluth- Superior	PNW	North Dakota	Other Minn. & Wisconsin	Midland & Gulf	Other	TOTAL
1997-98	78	261	2	4,298	18	9	1,269	5,935
	1%	4%	0%	72%	0%	0%	21%	100%
1998-99	233	1,685	0	7,422	54	1	2,546	11,941
	2%	14%	0%	62%	0%	0%	21%	100%
1999-00	429	111	38	10,547	19	3	2,879	14,026
	3%	1%	0%	75%	0%	0%	21%	100%
2000-01	794	594	56	13,225	171	14	5,613	20,468
	4%	3%	0%	65%	1%	0%	27%	100%
2001-02*	309	53	0	11,134	58	29	6,834	18,416
	2%	0%	0%	60%	0%	0%	37%	100%

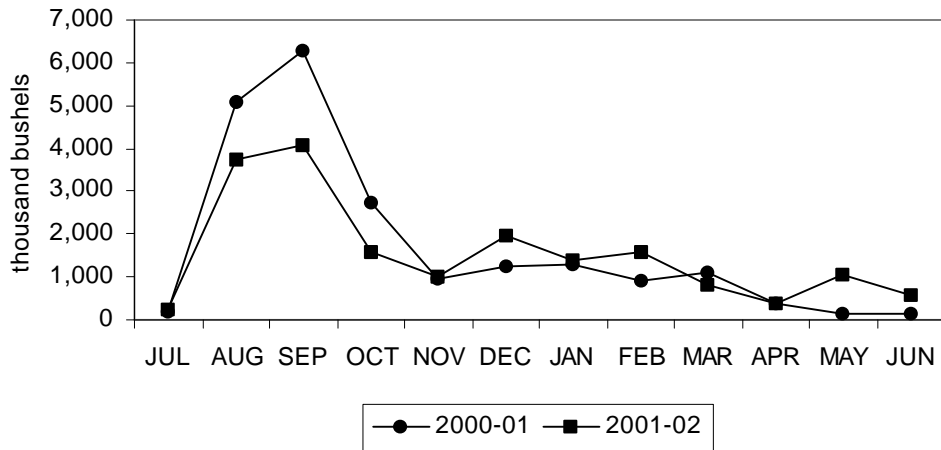
*Results are preliminary.

CANOLA SHIPMENTS

1997-98 to 2001-02



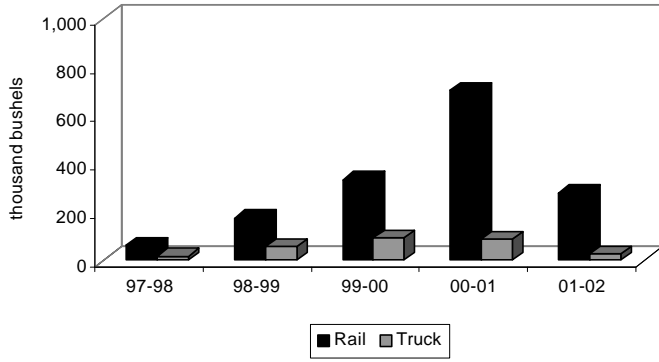
CANOLA SHIPMENTS by month, 2000-01 to 2001-02



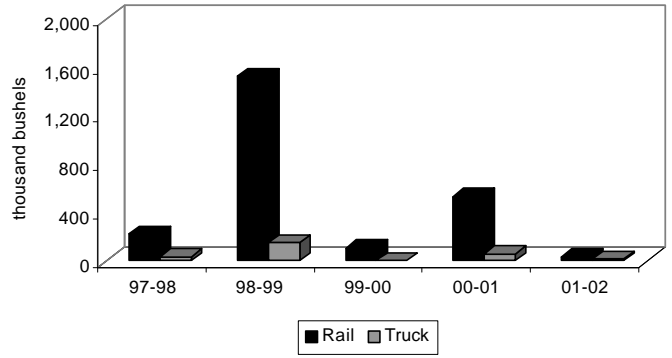
**NORTH DAKOTA CANOLA SHIPMENTS
BY RAIL, TRUCK AND DESTINATION
thousand bu.**

YEAR	Minneapolis-St. Paul		Duluth-Superior		PNW		North Dakota		Other Minn. & Wisconsin		Midland & Gulf		Other		TOTAL	
	Rail	Truck	Rail	Truck	Rail	Truck	Rail	Truck	Rail	Truck	Rail	Truck	Rail	Truck	Rail	Truck
1997-98	61	17	226	35	0	2	55	4,243	10	8	0	9	183	1,087	535	5,400
	78%	22%	87%	13%	0%	100%	1%	99%	57%	43%	0%	100%	14%	86%	9%	91%
1998-99	176	57	1,532	153	0	0	554	6,867	54	0	0	1	481	2,065	2,798	9,143
	76%	24%	91%	9%	0%	0%	7%	93%	100%	0%	8%	92%	19%	81%	23%	77%
1999-00	335	94	106	6	0	38	1,739	8,807	0	19	0	3	320	2,559	2,500	11,527
	78%	22%	95%	5%	0%	100%	16%	84%	0%	100%	0%	100%	11%	89%	18%	82%
2000-01	706	89	534	60	14	42	3,642	9,584	126	45	14	0	2,382	3,231	7,417	13,051
	89%	11%	90%	10%	25%	75%	28%	72%	74%	26%	100%	0%	42%	58%	36%	64%
2001-02	281	28	35	18	0	0	3,329	7,804	52	6	20	8	1,893	4,942	5,609	12,807
	91%	9%	66%	34%	0%	0%	30%	70%	89%	11%	71%	29%	28%	72%	30%	70%

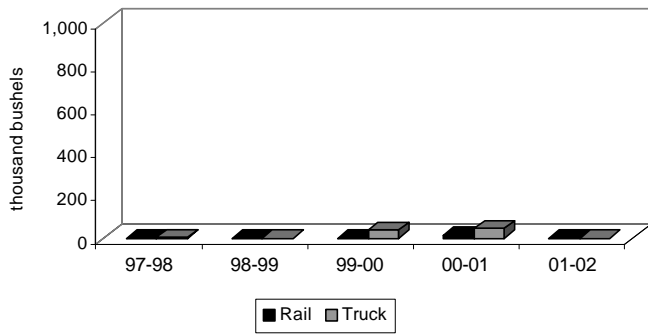
Canola to Minneapolis-St. Paul
1997-98 to 2001-02



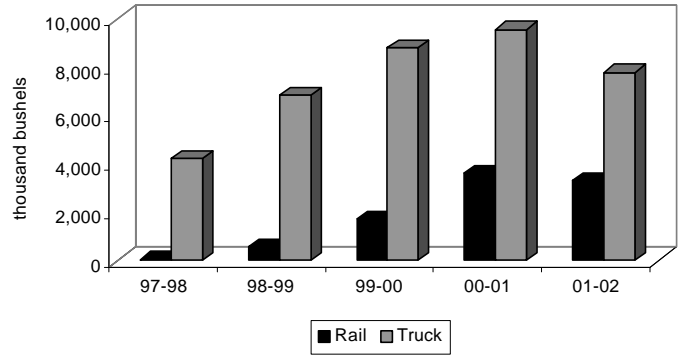
Canola to Duluth-Superior
1997-98 to 2001-02



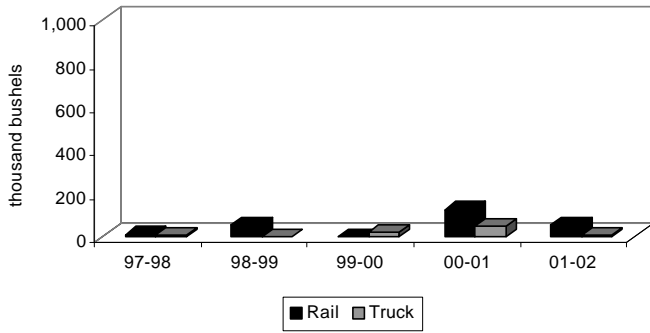
Canola to PNW
1997-98 to 2001-02



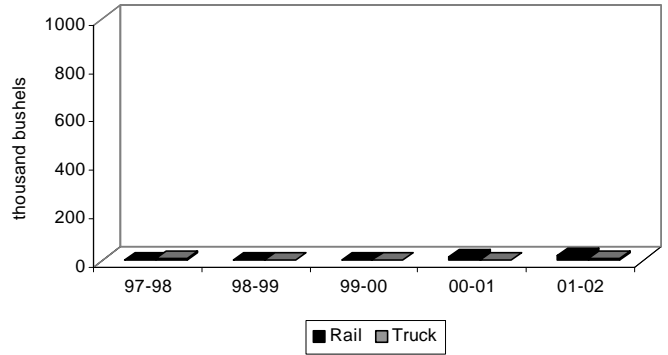
Canola to North Dakota
1997-98 to 2001-02



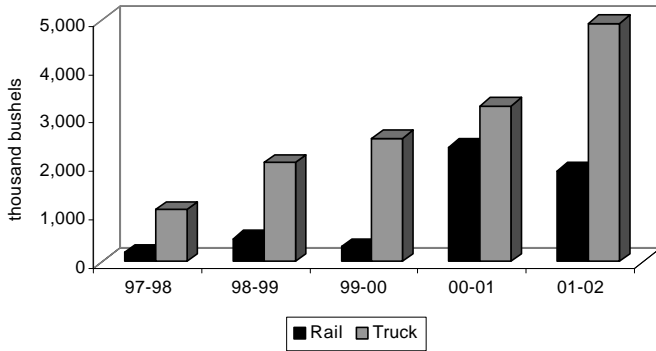
Canola to Other Minnesota & Wisconsin
1997-98 to 2001-02



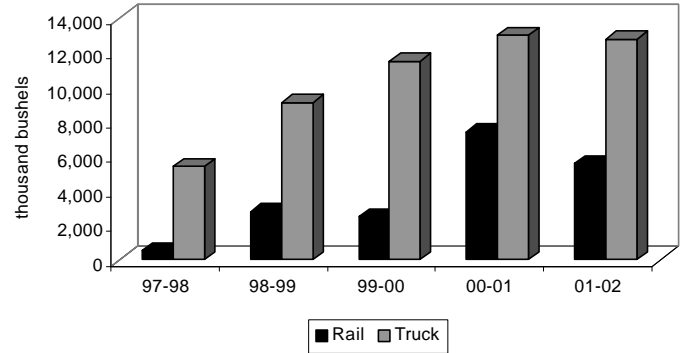
Canola to Midland & Gulf
1997-98 to 2001-02



Canola to Other Markets
1997-98 to 2001-02

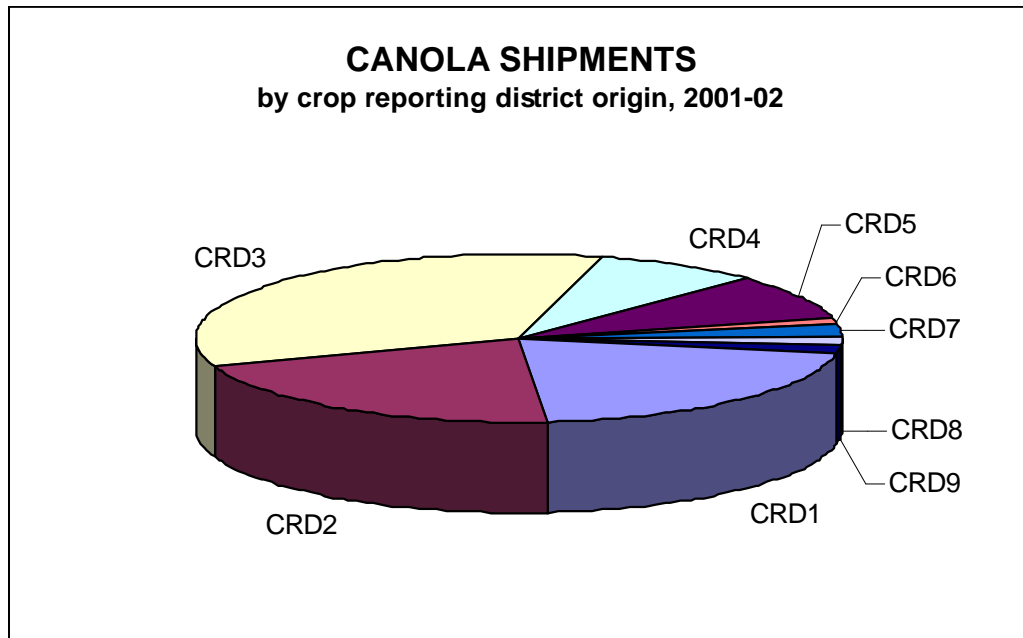


Total Canola Shipments
1997-98 to 2001-02



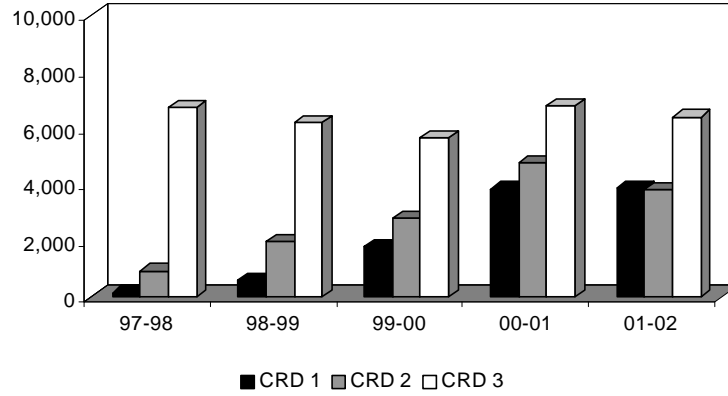
**NORTH DAKOTA CANOLA SHIPMENTS
BY CROP REPORTING DISTRICT
thousand bu.**

YEAR	Crop Reporting District									TOTAL
	1	2	3	4	5	6	7	8	9	
1997-98	156	932	6,733	143	527	50	22	1	76	8,641
	2%	11%	78%	2%	6%	1%	0%	0%	1%	100%
1998-99	589	1,972	6,194	393	1,008	1,296	82	235	173	11,941
	5%	17%	52%	3%	8%	11%	1%	2%	1%	100%
1999-00	1,802	2,811	5,653	865	1,843	531	225	88	208	14,026
	13%	20%	40%	6%	13%	4%	2%	1%	1%	100%
2000-01	3,846	4,780	6,799	1,717	1,704	462	409	182	569	20,468
	19%	23%	33%	8%	8%	2%	2%	1%	3%	100%
2001-02	3,857	3,797	6,400	1,555	1,576	216	462	300	253	18,416
	21%	21%	35%	8%	9%	1%	3%	2%	1%	100%

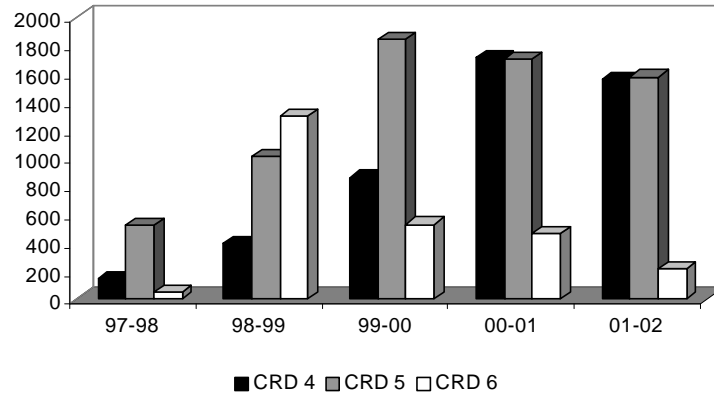


CANOLA SHIPMENTS BY CROP REPORTING DISTRICT (Thousand Bushels)

Northern Crop Reporting Districts



Central Crop Reporting Districts



Southern Crop Reporting Districts

