

**NORTH DAKOTA GRAIN AND OILSEED  
TRANSPORTATION STATISTICS  
1986-87**

**By**

**Dennis C. Ogg  
Linda K. Schuster**

**UGPTI Publication No. 63  
December 1987**

**NORTH DAKOTA GRAIN AND OILSEED  
TRANSPORTATION STATISTICS  
1986-87**

**BY**

**DENNIS C. OGG  
RESEARCH ASSISTANT  
AND  
LINDA K. SCHUSTER  
RESEARCH ASSISTANT**

**UPPER GREAT PLAINS TRANSPORTATION INSTITUTE  
NORTH DAKOTA STATE UNIVERSITY  
P. O. BOX 5074  
FARGO, NORTH DAKOTA 58105**

**in cooperation with**

**NORTH DAKOTA STATE WHEAT COMMISSION  
BISMARCK, NORTH DAKOTA**

**and**

**NORTH DAKOTA PUBLIC SERVICE COMMISSION  
BISMARCK, NORTH DAKOTA**

**DECEMBER 1987**

## PREFACE

The 1986-87 North Dakota Grain and Oilseed Transportation Statistics Report was prepared by Dennis C. Ogg and Linda K. Schuster, Research Assistants, Upper Great Plains Transportation Institute.

This report represents a continuation of analysis concerned with the patterns and methods of distributing grains and oilseeds from North Dakota. This series began with the analysis of 1956-57 data and was published in Agricultural Economics Report 14, Department of Agricultural Economics, North Dakota State University. Subsequent years' data were analyzed in Agricultural Economics Reports 15, 17, 44 and 56, and Agricultural Experiment Station Bulletin 462. The compilation and analysis of data for the year 1967-68 in this series was assumed by the Upper Great Plains Transportation Institute. Also, the data representing the 1967-68 period were the first results of the requirements of the North Dakota Public Service Commission that all North Dakota elevators report monthly movements of grains and oilseeds by truck and rail. Prior to 1967-68, these data had been estimated from questionnaires completed by a small portion or sample of country elevators.

### North Dakota State Wheat Commission

Cecil Watson, Chairman	Ed Volk, Knox
Willard Peterson, V. Chairman	Henry Neshem, Berthold
Elmer Dockter, Streeter	George Howe, Casselton
John Rafteseth, Elgin	

Melvin G. Maier, Administrator  
Neal Fisher, Deputy Administrator  
Mike Jones, Marketing Assistant  
Margie L. Martin, Product Promotion Specialist  
James T. Hawley, Information Systems Specialist

### North Dakota Public Service Commission

Commissioners: Dale V. Sandstorm, President  
Bruce Hagen  
Leo M. Reinbold

Transportation Division: Jon H. Mielke, Director of Traffic

Grain Elevator Division: Maurice H. Arves, Director

## TABLE OF CONTENTS

	Page
PREFACE. . . . .	i
NORTH DAKOTA GRAIN AND OILSEED TRANSPORTATION STATISTICS, 1986-87 . . . . .	
Objective of Report. . . . .	iii
Scope of Report. . . . .	iii
Source of Data . . . . .	iii
Organization of the Remainder of the Report. . . . .	iv
ALL NORTH DAKOTA GRAIN AND OILSEED SHIPMENTS . . . . .	1
HARD RED SPRING WHEAT SHIPMENTS. . . . .	12
DURUM SHIPMENTS. . . . .	19
BARLEY SHIPMENTS . . . . .	26
SUNFLOWER SHIPMENTS. . . . .	33
OATS SHIPMENTS . . . . .	40
SOYBEAN SHIPMENTS. . . . .	47
FLAX SHIPMENTS . . . . .	54
CORN SHIPMENTS . . . . .	61

# NORTH DAKOTA GRAIN AND OILSEED TRANSPORTATION STATISTICS 1986-87

## Objective of Report

This report represents a continuation of analyses concerned with the patterns and methods of distributing grain from North Dakota. The collection and compilation of this type of data began in 1956-57. The objective of this report, like prior reports, is to provide the necessary data base for identifying trends in the distribution of grain and oilseeds from North Dakota.

## Scope of Report

Data were tabulated according to major characteristics which typically describe commodity flows. The major shipment characteristics considered were: destination, mode, origin, time, and commodity. These characteristics were defined as follows:

**Destination:** Minneapolis-St. Paul, Duluth-Superior, West, (ID, OR, WA) and miscellaneous markets. Miscellaneous markets consist of Other Minnesota/Wisconsin, Midland/Southwest States (AR, AZ, CA, CO, IA, KS, LA, MO, MT, NE, NM, NV, OK, SD, TX, and WY), North Dakota and other destinations.

**Mode:** Rail or truck. Rail includes Commodity Credit Corporation shipments.

**Origin:** The nine crop reporting districts in North Dakota (Figure 1).

**Time:** By month, from July 1986 to June 1987, and previous years.

**Commodity:** Hard red spring wheat, durum, barley, sunflower, oats, soybeans, flaxseed and corn.

## Source of Data

The data used to analyze North Dakota grain distribution patterns for the period July 1986 through June 1987, were obtained from all country elevators in North Dakota. The data source is the North Dakota Public Service Commission's "Grain Movement Report." Every country elevator in North Dakota is required under state statute to assemble and submit a "Grain Movement Report" to the Public Service Commission on a monthly basis.

## Organization of the Remainder of the Report

The same general commodity flow characteristics are considered in this report as in previous reports of this nature. Flow patterns for each type of grain are described in separate sections in the following order: (1) Total grain and oilseed shipments, (2) Hard red spring wheat, (3) Durum, (4) Barley, (5) Sunflower, (6) Oats, (7) Soybeans, (8) Flaxseed, and (9) Corn.

Some small inconsistencies in totals may be noted when comparing tables and graphs due to rounding error.

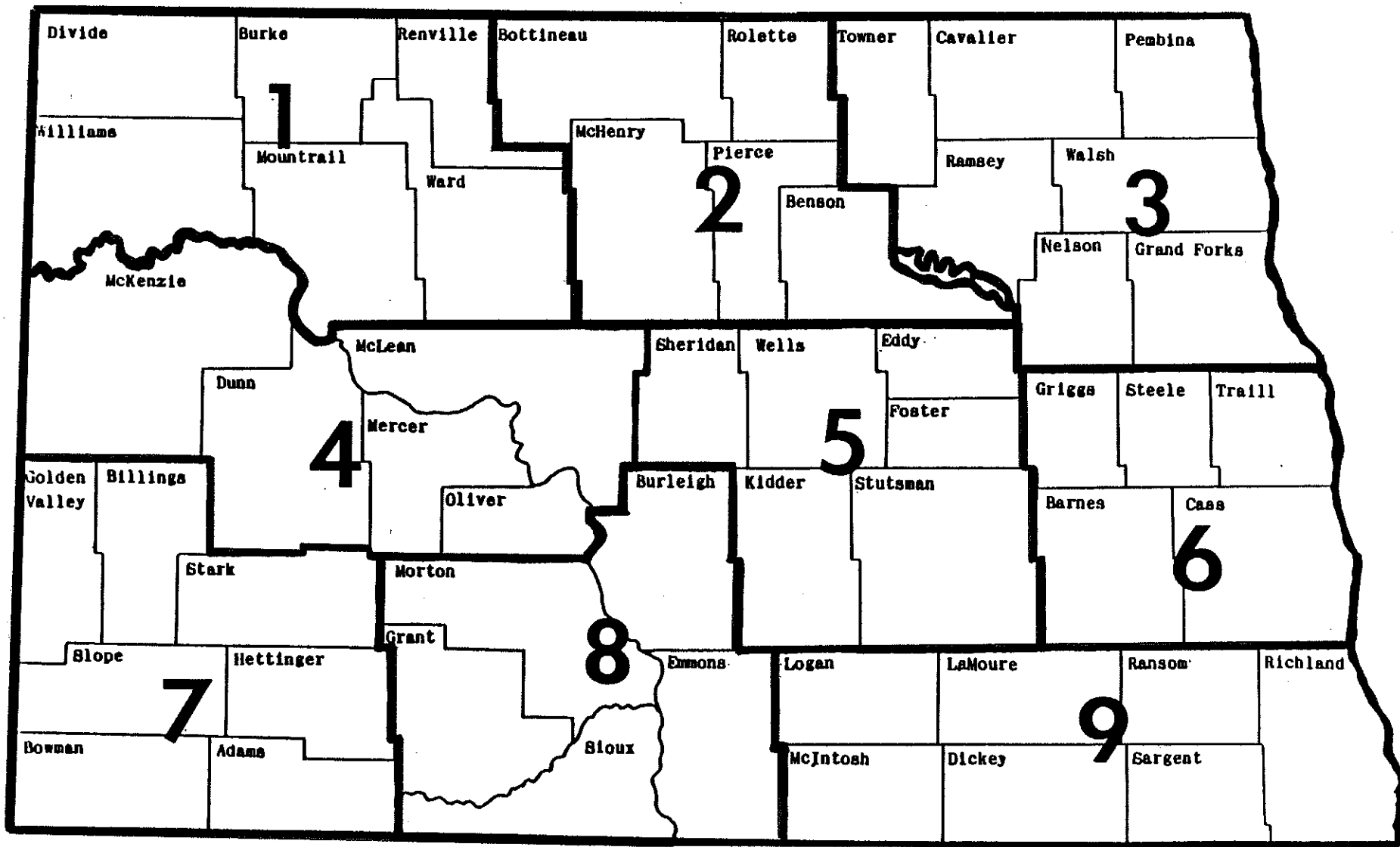


Figure 1. North Dakota Crop Reporting Districts and Counties.

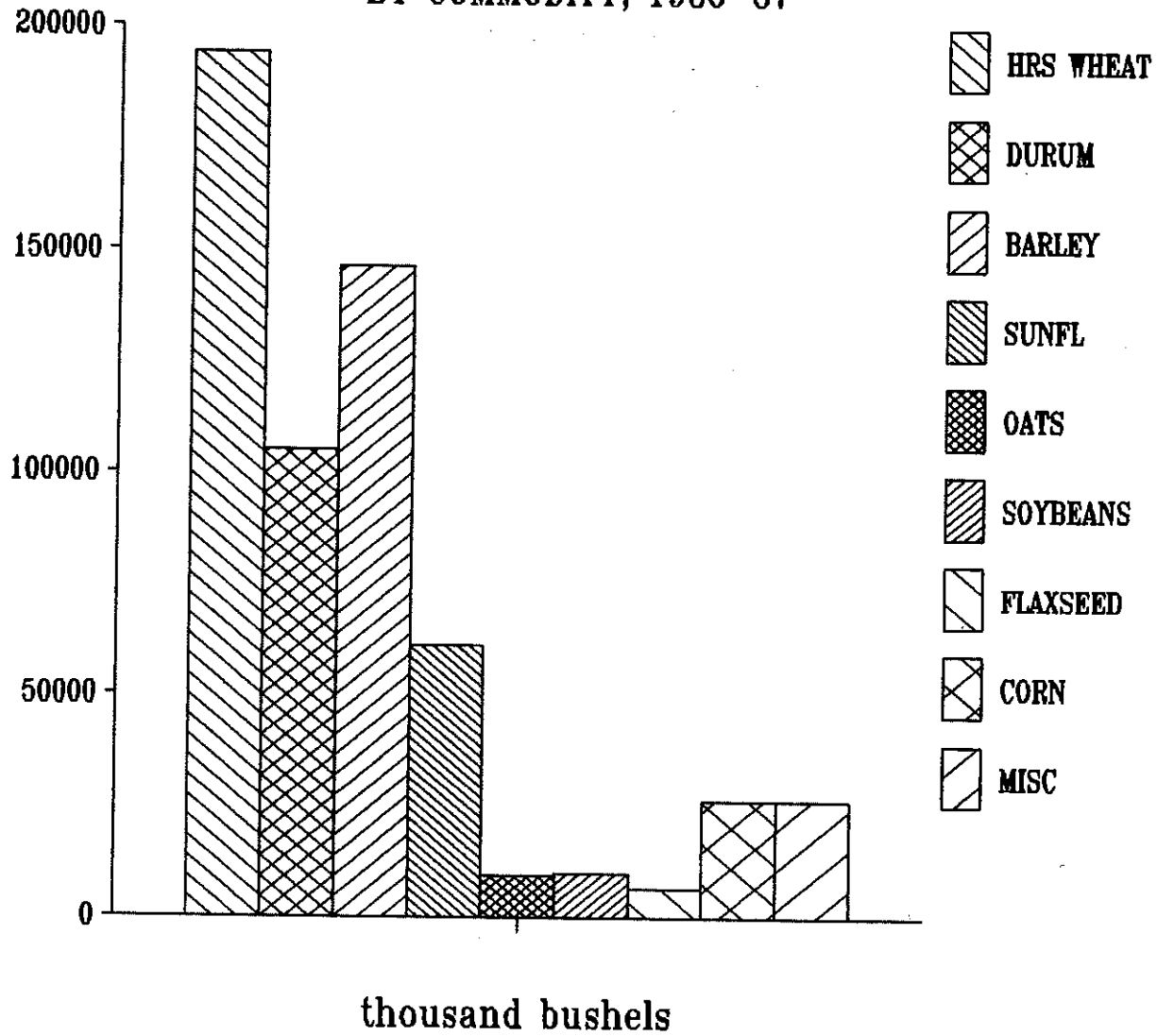
**TOTAL  
GRAIN AND OILSEED  
SHIPMENTS**



NORTH DAKOTA GRAIN AND OILSEED SHIPMENTS  
1976-1987

YEAR	HARD RED SPRING	DURUM	BARLEY	SUNFLOWERS	OATS	SOYBEANS	FLAXSEED	MISC.	CORN	TOTAL
(thousand bu.)										
1976-77	123,976 (41%)	65,024 (21%)	73,314 (24%)	15,622 (5%)	12,158 (4%)	1,941 (1%)	4,883 (2%)	8,994 (3%)	N.A.	305,912 (100%)
1977-78	127,953 (36%)	88,366 (25%)	63,115 (18%)	51,278 (14%)	10,492 (3%)	1,776 (1%)	6,174 (2%)	9,450 (3%)	N.A.	358,604 (100%)
1978-79	184,923 (41%)	88,659 (19%)	69,648 (15%)	79,253 (17%)	12,087 (3%)	2,943 (1%)	4,541 (1%)	14,180 (3%)	N.A.	456,234 (100%)
1979-80	169,573 (36%)	94,581 (20%)	78,621 (17%)	95,940 (20%)	7,959 (2%)	5,452 (1%)	4,580 (1%)	19,358 (4%)	N.A.	476,064 (100%)
1980-81	126,115 (31%)	63,193 (16%)	62,672 (15%)	114,866 (28%)	3,515 (1%)	3,109 (1%)	4,176 (1%)	9,498 (2%)	13,941 (3%)	401,085 (100%)
1981-82	148,169 (32%)	81,881 (17%)	79,801 (17%)	111,496 (24%)	8,379 (2%)	5,801 (1%)	3,644 (0.8%)	12,232 (3%)	10,460 (2%)	461,862 (100%)
1982-83	178,800 (36%)	79,132 (16%)	70,106 (14%)	121,744 (25%)	10,583 (2%)	7,687 (2%)	4,883 (1%)	8,219 (2%)	10,518 (2%)	491,671 (100%)
1983-84	163,305 (30%)	84,941 (16%)	106,645 (20%)	103,449 (19%)	21,261 (4%)	12,504 (2%)	4,235 (1%)	10,014 (2%)	32,463 (6%)	538,818 (100%)
1984-85	183,109 (36%)	80,670 (16%)	106,030 (21%)	77,412 (15%)	11,232 (2%)	14,292 (3%)	4,098 (1%)	12,389 (2%)	22,623 (4%)	511,855 (100%)
1985-86	181,089 (38%)	87,344 (18%)	105,436 (22%)	53,541 (11%)	7,706 (2%)	12,116 (3%)	5,503 (1%)	12,261 (3%)	13,394 (3%)	478,390 (100%)
1986-87	193,962 (34%)	104,968 (18%)	146,342 (26%)	61,067 (11%)	9,387 (2%)	9,990 (2%)	6,666 (1%)	12,500 (2%)	26,437 (5%)	571,319 (100%)
3 Year Average	186,053 (36%)	90,994 (17%)	119,269 (23%)	64,007 (12%)	9,442 (2%)	12,133 (2%)	5,422 (1%)	12,383 (2%)	20,818 (4%)	520,521 (100%)

# ALL SHIPMENTS BY COMMODITY, 1986-87

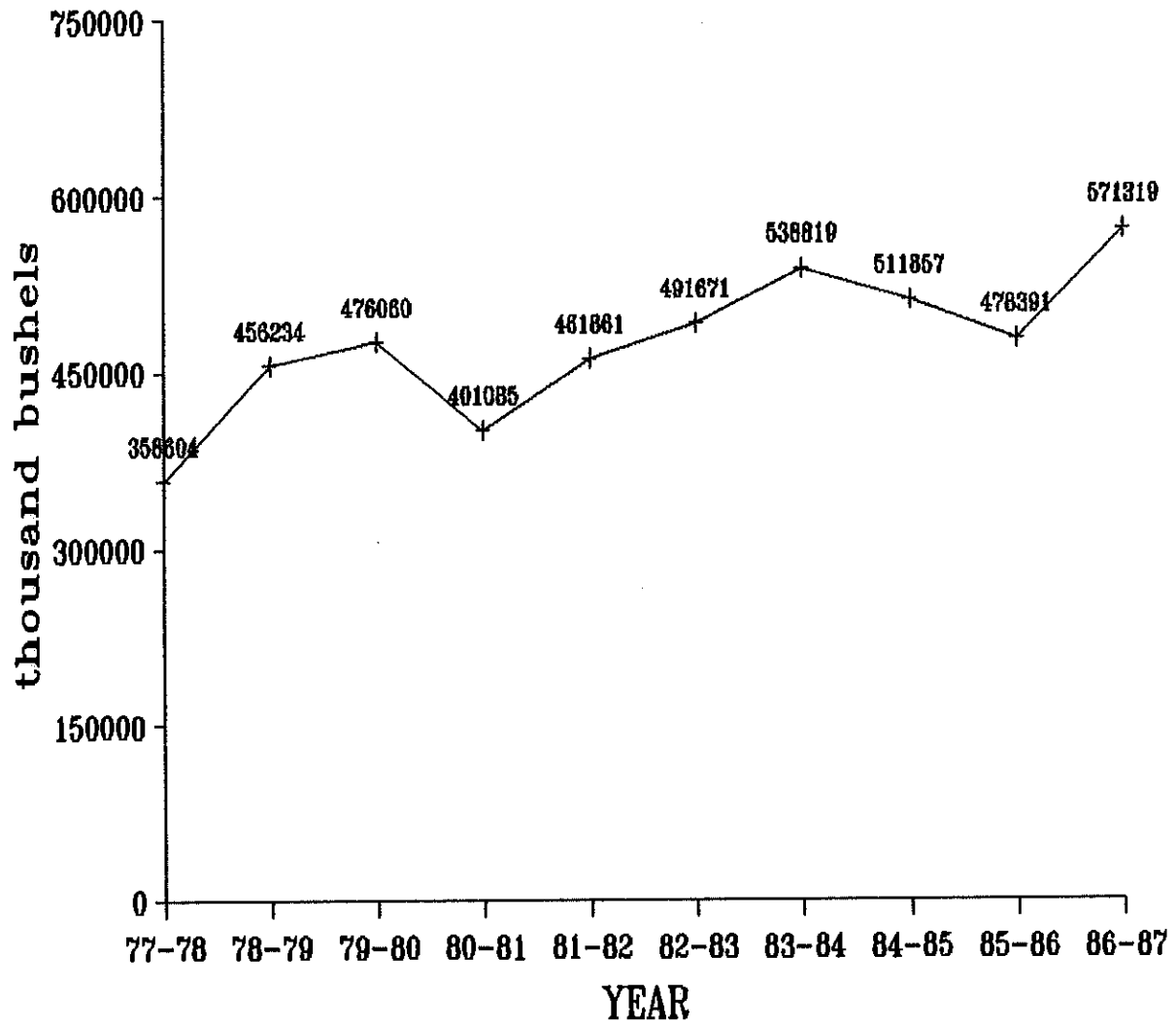


NORTH DAKOTA GRAIN AND OILSEED SHIPMENTS  
BY DESTINATION

YEAR	MINNEAPOLIS-ST. PAUL	DULUTH-SUPERIOR	WEST	MISC. MARKETS	TOTAL
(thousand bu.)					
1976-77	109,620 (36%)	128,044 (42%)	20,823 (7%)	47,425 (16%)	305,912 (100%)
1977-78	85,231 (24%)	192,925 (54%)	29,031 (8%)	51,417 (14%)	358,604 (100%)
1978-79	93,353 (20%)	250,653 (55%)	46,413 (10%)	65,814 (14%)	456,233 (100%)
1979-80	119,711 (25%)	230,544 (48%)	46,954 (10%)	78,856 (17%)	476,065 (100%)
1980-81	81,487 (20%)	184,825 (46%)	39,975 (10%)	94,798 (24%)	401,085 (100%)
1981-82	92,099 (20%)	230,899 (50%)	37,006 (8%)	101,859 (22%)	461,862 (100%)
1982-83	122,745 (25%)	201,427 (41%)	45,240 (9%)	122,259 (25%)	491,671 (100%)
1983-84	134,312 (25%)	195,942 (36%)	59,203 (11%)	149,362 (28%)	538,818 (100%)
1984-85	129,455 (25%)	178,299 (35%)	61,002 (12%)	143,099 (28%)	511,856 (100%)
1985-86	131,879 (28%)	109,232 (23%)	44,812 (9%)	192,467 (40%)	478,391 (100%)
1986-87	121,620 (21%)	119,016 (21%)	92,923 (16%)	237,761 (42%)	571,319 (100%)
3 Year Average	127,651 (25%)	135,516 (26%)	66,246 (13%)	191,109 (37%)	520,522 (100%)

# ALL COMMODITY SHIPMENTS

1977-78 to 1986-87



NORTH DAKOTA GRAIN AND OILSEED SHIPMENTS BY RAIL AND TRUCK AND DESTINATION

YEAR	<u>MINNEAPOLIS-ST. PAUL</u>		<u>DULUTH-SUPERIOR</u>		<u>WEST</u>		<u>MISC. MARKETS</u>		<u>TOTAL</u>	
	Rail	Truck	Rail	Truck	Rail	Truck	Rail	Truck	Rail	Truck
(thousand bu.)										
1976-77	82,764 (76%)	26,856 (24%)	80,207 (63%)	47,837 (37%)	11,703 (56%)	9,120 (44%)	30,455 (64%)	16,970 (36%)	205,129 (67%)	100,783 (33%)
1977-78	60,859 (71%)	24,372 (29%)	121,899 (63%)	71,025 (37%)	19,386 (67%)	9,645 (33%)	33,034 (64%)	18,384 (36%)	235,178 (66%)	123,426 (34%)
1978-79	61,186 (66%)	32,168 (34%)	140,112 (56%)	110,541 (44%)	33,461 (72%)	12,952 (28%)	36,310 (55%)	29,504 (45%)	271,069 (59%)	185,165 (41%)
1979-80	79,040 (60%)	40,672 (40%)	138,313 (66%)	92,225 (34%)	31,878 (68%)	15,076 (32%)	45,106 (57%)	33,750 (43%)	294,342 (62%)	181,724 (38%)
1980-81	54,815 (67%)	26,672 (33%)	117,168 (63%)	67,657 (37%)	25,549 (64%)	14,426 (36%)	54,406 (57%)	40,392 (43%)	251,938 (63%)	149,147 (37%)
1981-82	60,345 (66%)	31,753 (34%)	170,762 (74%)	60,136 (26%)	24,165 (65%)	12,841 (35%)	62,032 (61%)	39,827 (39%)	317,304 (69%)	144,558 (31%)
1982-83	81,525 (66%)	41,220 (34%)	158,282 (78%)	43,145 (21%)	30,108 (67%)	15,132 (33%)	70,546 (58%)	51,713 (42%)	340,461 (69%)	151,210 (31%)
1983-84	94,392 (70%)	39,920 (30%)	150,766 (77%)	45,176 (23%)	49,055 (83%)	10,148 (17%)	98,897 (66%)	50,465 (34%)	393,110 (73%)	145,709 (30%)
1984-85	90,807 (70%)	38,648 (30%)	145,495 (82%)	32,804 (18%)	51,786 (85%)	9,217 (15%)	86,921 (61%)	56,179 (39%)	375,009 (73%)	136,847 (27%)
1985-86	99,046 (75%)	32,833 (25%)	88,796 (81%)	20,436 (19%)	38,091 (85%)	6,722 (15%)	129,454 (67%)	63,013 (33%)	355,387 (74%)	123,004 (26%)
1986-87	96,166 (79%)	25,454 (21%)	101,009 (85%)	18,008 (15%)	87,738 (94%)	5,185 (6%)	165,655 (70%)	72,105 (30%)	450,569 (79%)	120,750 (21%)
3 Year Average	95,340 (75%)	32,312 (25%)	111,767 (82%)	23,749 (18%)	59,205 (89%)	7,041 (11%)	127,343 (67%)	63,766 (33%)	393,655 (76%)	126,868 (24%)

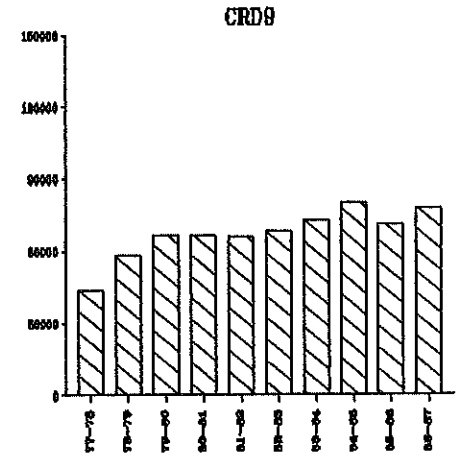
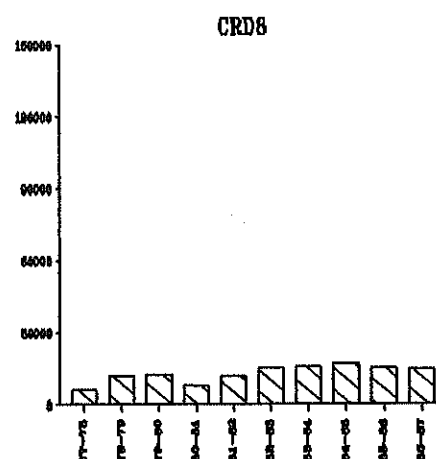
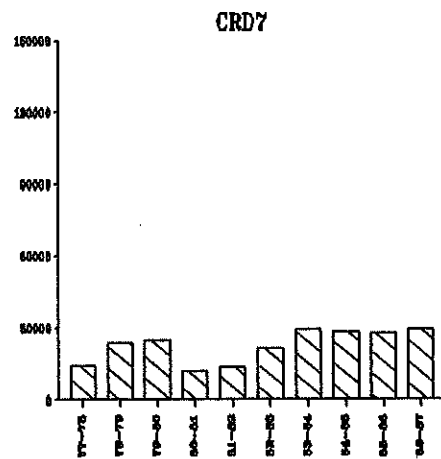
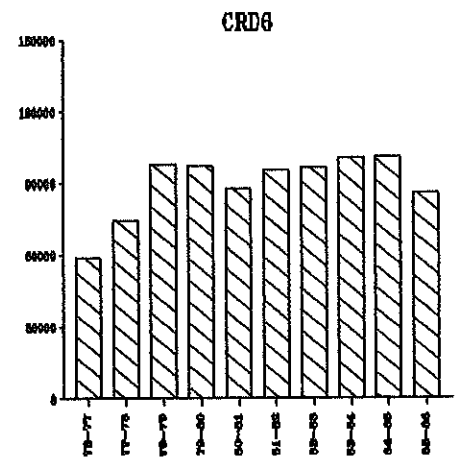
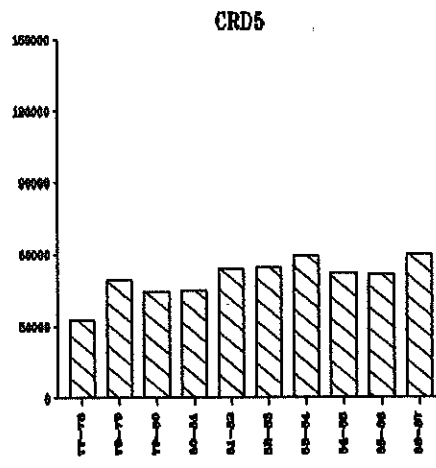
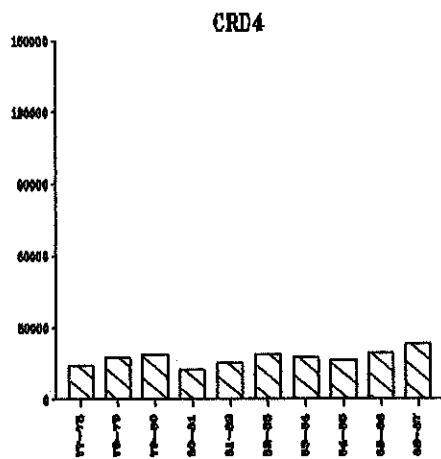
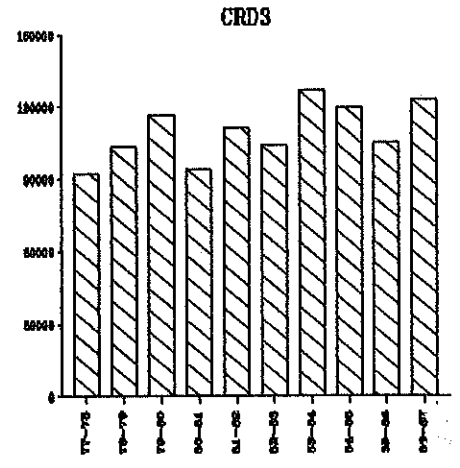
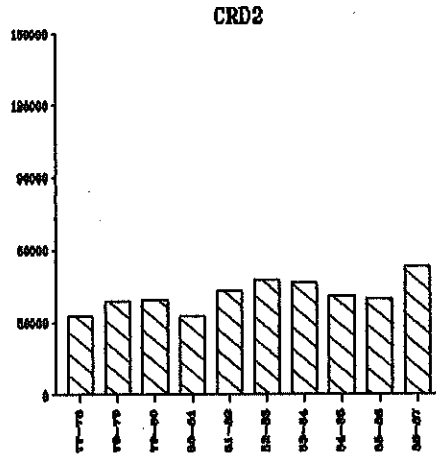
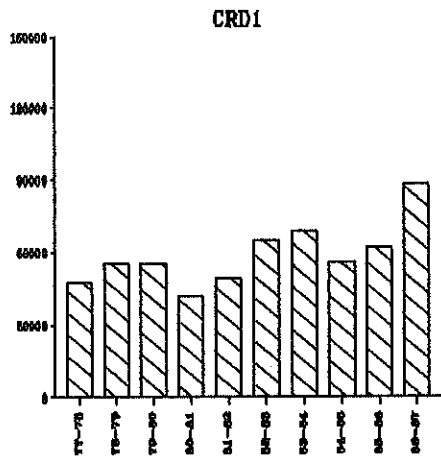
NORTH DAKOTA GRAIN AND OILSEED MOVEMENT BY MONTH  
 July, 1986 - June, 1987  
 (thousand bushels)

MONTH	HRS	DURUM	SOYBEANS	FLAXSEED	BARLEY	OATS	CORN	SUNFLOWERS	MISC.	TOTAL
July	24,411	11,463	829	514	12,178	546	770	5,370	805	56,886
August	24,185	10,537	335	138	23,753	1,174	527	3,778	824	65,252
September	23,697	11,267	220	773	14,399	901	1,479	2,255	1,135	56,129
October	16,734	10,795	1,205	2,580	10,156	833	2,426	9,936	1,281	55,946
November	10,463	6,532	919	522	9,395	775	2,375	6,993	1,056	39,031
December	16,883	9,757	296	480	11,776	1,415	3,923	3,056	1,107	48,693
January	12,717	8,521	394	179	8,921	969	5,540	3,724	525	41,491
February	11,617	8,232	1,460	188	15,221	700	3,359	6,342	1,860	48,978
March	10,698	10,176	1,234	202	14,439	397	2,724	4,649	1,243	45,762
April	10,582	5,634	1,192	372	10,884	374	1,371	7,058	1,176	38,643
May	15,684	5,127	1,030	350	5,524	702	759	3,907	812	33,894
June	16,291	6,927	876	370	9,695	599	1,183	3,996	677	40,614
Total	193,962	104,968	9,990	6,666	146,342	9,387	26,437	61,067	12,500	571,319

NORTH DAKOTA GRAIN AND OILSEED SHIPMENTS  
BY CROP REPORTING DISTRICT ORIGIN

YEAR	Crop Reporting District									TOTAL
	1	2	3	4	5	6	7	8	9	
	(thousand bu.)									
1976-77	38,628 (13%)	29,421 (10%)	80,085 (26%)	13,315 (4%)	29,763 (10%)	58,924 (19%)	17,044 (6%)	9,454 (3%)	29,280 (10%)	305,914 (100%)
1977-78	47,881 (13%)	32,552 (9%)	92,607 (26%)	14,323 (4%)	32,575 (9%)	74,423 (21%)	14,150 (4%)	6,373 (2%)	43,721 (12%)	358,605 (100%)
1978-79	55,802 (12%)	38,668 (8%)	103,393 (23%)	17,394 (4%)	49,133 (11%)	97,722 (21%)	23,776 (5%)	12,099 (3%)	58,249 (13%)	456,236 (100%)
1979-80	55,571 (12%)	39,278 (8%)	116,150 (24%)	18,722 (4%)	44,364 (9%)	97,513 (20%)	24,865 (5%)	12,761 (3%)	66,843 (14%)	476,067 (100%)
1980-81	41,942 (10%)	32,879 (8%)	94,203 (24%)	12,540 (3%)	44,670 (11%)	88,147 (22%)	12,060 (3%)	7,864 (2%)	66,779 (17%)	401,085 (100%)
1981-82	49,664 (11%)	43,480 (9%)	111,527 (24%)	15,078 (3%)	54,129 (12%)	95,952 (20%)	13,820 (3%)	11,984 (2%)	66,228 (14%)	461,862 (100%)
1982-83	64,835 (13%)	47,675 (10%)	103,975 (21%)	18,459 (4%)	54,562 (11%)	96,897 (20%)	21,755 (4%)	15,245 (3%)	68,266 (14%)	491,671 (100%)
1983-84	69,142 (13%)	46,862 (9%)	127,082 (24%)	17,675 (3%)	59,256 (11%)	100,845 (19%)	29,322 (5%)	15,796 (3%)	72,839 (14%)	538,818 (100%)
1984-85	56,106 (11%)	40,973 (9%)	119,549 (23%)	16,346 (3%)	51,963 (10%)	101,475 (20%)	28,236 (5%)	16,856 (3%)	80,352 (15%)	511,856 (100%)
1985-86	62,459 (13%)	39,674 (8%)	104,951 (22%)	19,241 (4%)	51,713 (11%)	86,015 (18%)	27,497 (6%)	15,567 (3%)	71,301 (15%)	478,391 (100%)
1986-87	88,714 (16%)	53,092 (9%)	123,222 (22%)	23,220 (4%)	59,899 (10%)	100,863 (18%)	29,473 (5%)	14,906 (3%)	77,929 (14%)	571,319 (100%)
3 Year Average	69,093 (13%)	44,580 (9%)	115,907 (22%)	19,593 (4%)	54,525 (10%)	96,118 (18%)	28,402 (5%)	15,776 (3%)	76,527 (15%)	520,522 (100%)

ALL GRAIN AND OILSEED SHIPMENTS BY CROP REPORTING DISTRICT  
(thousand bushels)





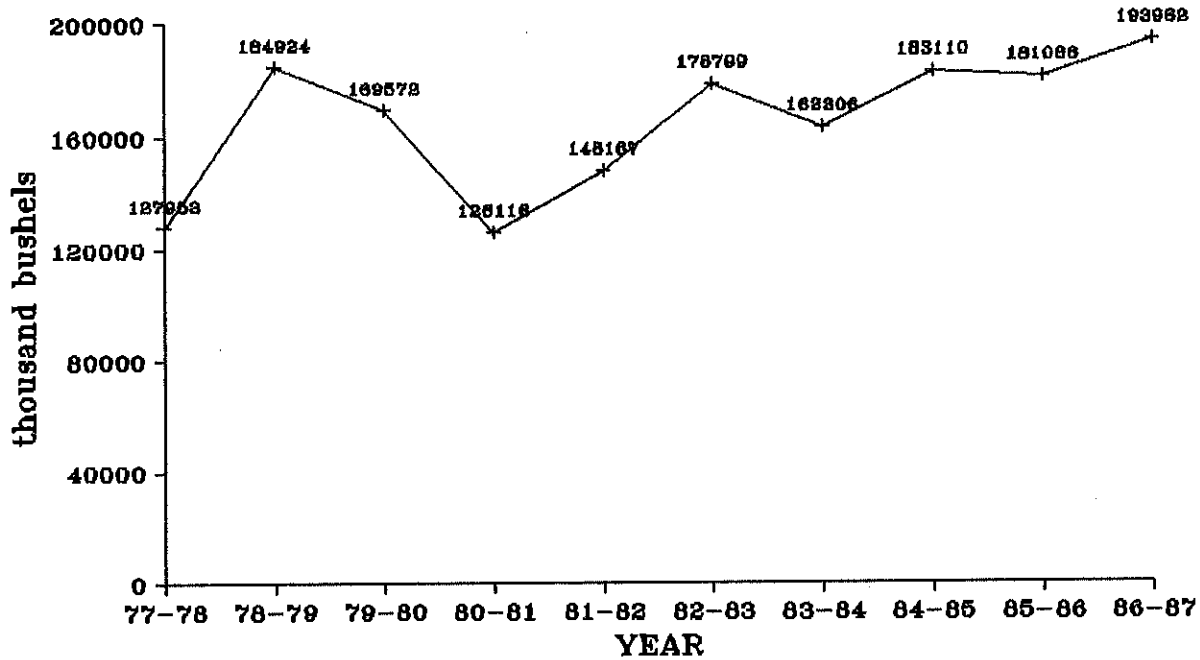
**HARD RED SPRING  
WHEAT**

NORTH DAKOTA HARD RED SPRING WHEAT SHIPMENTS  
BY DESTINATION

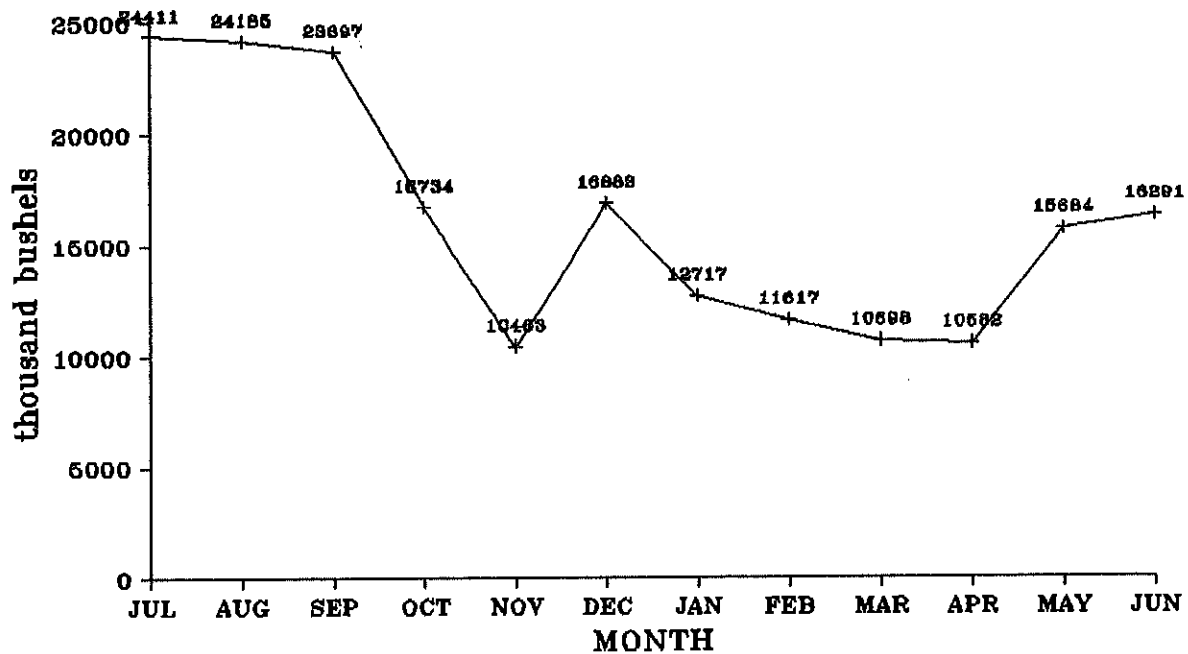
YEAR	MINNEAPOLIS-ST. PAUL	DULUTH-SUPERIOR	WEST	MISC. MARKETS	TOTAL
	(thousand bu.)				
1976-77	38,230 (31%)	53,419 (43%)	16,675 (13%)	15,651 (13%)	123,975 (100%)
1977-78	28,199 (22%)	65,832 (51%)	21,502 (17%)	12,402 (10%)	127,953 (100%)
1978-79	28,846 (16%)	108,717 (59%)	34,818 (19%)	12,542 (7%)	184,923 (100%)
1979-80	44,031 (26%)	76,887 (45%)	31,377 (19%)	17,278 (10%)	169,573 (100%)
1980-81	27,981 (22%)	62,608 (50%)	23,074 (18%)	12,453 (10%)	126,116 (100%)
1981-82	31,584 (21%)	77,113 (52%)	25,325 (17%)	14,146 (10%)	148,168 (100%)
1982-83	49,562 (28%)	79,160 (44%)	34,527 (19%)	15,550 (9%)	178,800 (100%)
1983-84	48,696 (30%)	66,518 (41%)	29,091 (18%)	19,000 (12%)	163,305 (100%)
1984-85	66,796 (36%)	56,002 (31%)	28,452 (16%)	31,859 (17%)	183,109 (100%)
1985-86	68,458 (38%)	48,723 (27%)	21,311 (12%)	42,597 (24%)	181,088 (100%)
1986-87	59,020 (30%)	51,564 (27%)	24,446 (13%)	58,933 <sup>a</sup> (30%)	193,962 (100%)
3 Year Average	64,758 (35%)	52,096 (28%)	24,736 (13%)	44,462 (24%)	186,053 (100%)

<sup>a</sup> Miscellaneous markets for hard red spring wheat include Midland/Southwest States (22,914,459 bushels or 12%), Other Minnesota/Wisconsin (20,833,373 bushels or 11%), North Dakota destinations (3,453,220 bushels or 2%), and all other miscellaneous destinations (11,681,620 bushels or 5%).

## HARD RED SPRING WHEAT SHIPMENTS 1977-78 to 1986-87



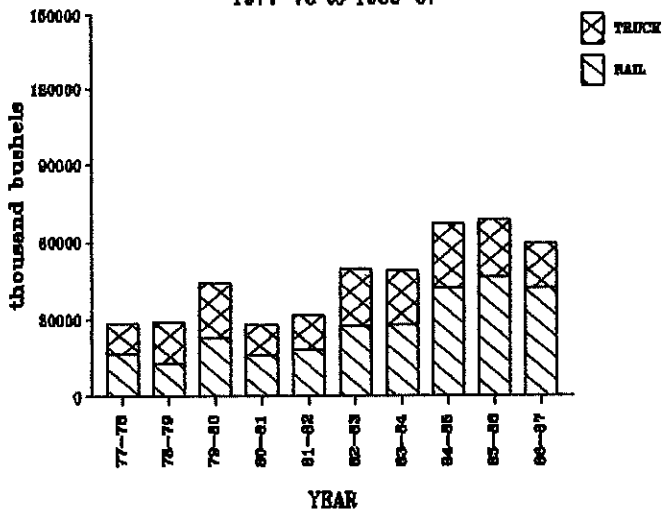
## HARD RED SPRING WHEAT SHIPMENTS BY MONTH, 1986-87



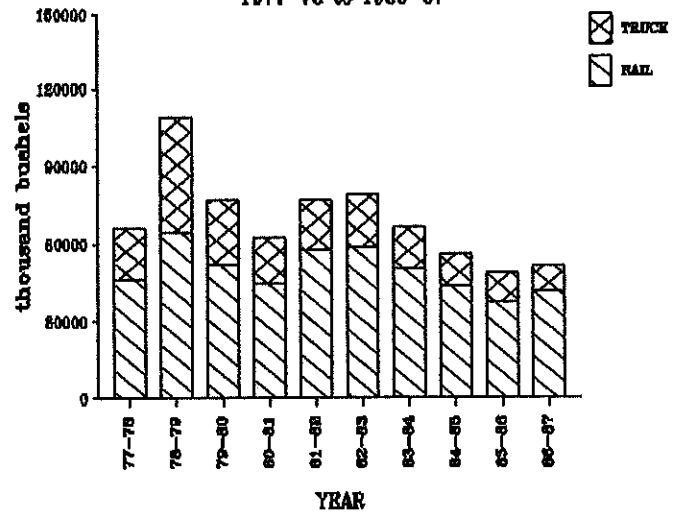
NORTH DAKOTA HARD RED SPRING WHEAT SHIPMENTS BY RAIL AND TRUCK AND DESTINATION

YEAR	<u>MINNEAPOLIS-ST. PAUL</u>		<u>DULUTH-SUPERIOR</u>		<u>WEST</u>		<u>MISC. MARKETS</u>		<u>TOTAL</u>	
	Rail	Truck	Rail	Truck	Rail	Truck	Rail	Truck	Rail	Truck
	(thousand bu.)									
1976-77	22,206 (58%)	16,024 (42%)	37,140 (70%)	16,280 (30%)	10,629 (64%)	6,047 (36%)	12,249 (78%)	3,402 (22%)	82,224 (66%)	41,753 (33%)
1977-78	16,211 (57%)	11,988 (43%)	46,283 (70%)	19,548 (30%)	14,630 (68%)	6,873 (32%)	9,385 (76%)	3,035 (24%)	86,509 (68%)	41,444 (32%)
1978-79	12,762 (44%)	16,084 (56%)	64,230 (59%)	44,487 (41%)	24,389 (70%)	10,429 (30%)	7,429 (59%)	5,114 (41%)	108,810 (59%)	76,114 (41%)
1979-80	22,476 (51%)	21,555 (49%)	51,970 (67%)	24,917 (33%)	19,337 (62%)	12,040 (38%)	12,481 (72%)	4,796 (28%)	106,265 (63%)	63,308 (37%)
1980-81	15,942 (57%)	12,039 (43%)	44,702 (71%)	17,906 (29%)	12,444 (54%)	10,630 (46%)	9,670 (78%)	2,783 (22%)	82,758 (66%)	43,358 (34%)
1981-82	18,080 (57%)	13,504 (43%)	57,821 (74%)	19,292 (26%)	15,709 (62%)	9,616 (38%)	9,709 (68%)	4,436 (32%)	101,319 (68%)	46,848 (32%)
1982-83	27,413 (55%)	22,149 (45%)	58,601 (74%)	20,559 (26%)	23,371 (68%)	11,156 (32%)	9,798 (63%)	5,752 (37%)	119,183 (67%)	59,616 (33%)
1983-84	20,087 (49%)	20,609 (51%)	50,383 (76%)	16,136 (24%)	20,523 (71%)	8,568 (29%)	13,020 (69%)	5,980 (31%)	112,013 (69%)	51,292 (31%)
1984-85	42,183 (63%)	24,613 (37%)	43,780 (78%)	12,223 (22%)	21,322 (75%)	7,130 (25%)	22,765 (71%)	9,094 (29%)	130,049 (71%)	53,061 (29%)
1985-86	46,269 (68%)	22,189 (32%)	37,313 (77%)	11,409 (23%)	16,478 (77%)	4,832 (23%)	31,648 (74%)	10,948 (26%)	131,709 (73%)	49,379 (27%)
1986-87	41,857 (71%)	17,163 (29%)	41,516 (81%)	10,048 (19%)	20,491 (84%)	3,955 (16%)	49,533 (84%)	9,399 (16%)	153,397 (79%)	40,565 (21%)
3 Year Average	43,436 (67%)	21,322 (33%)	40,870 (78%)	11,227 (22%)	19,430 (79%)	5,306 (21%)	34,649 (78%)	9,814 (22%)	138,385 (74%)	47,668 (26%)

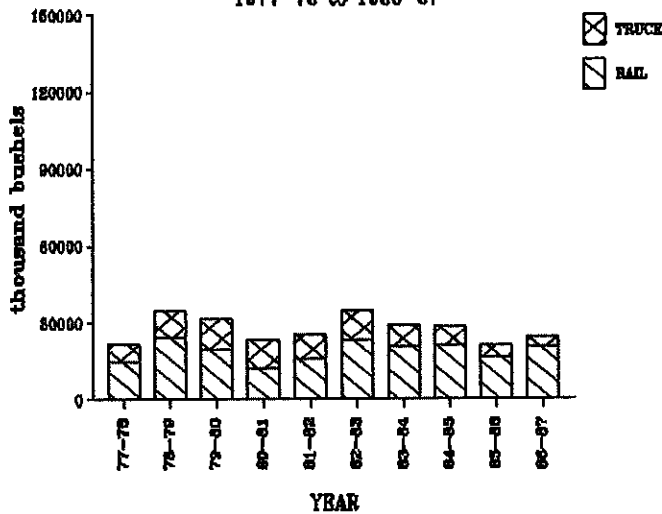
**HRS TO MPLS**  
1977-78 to 1986-87



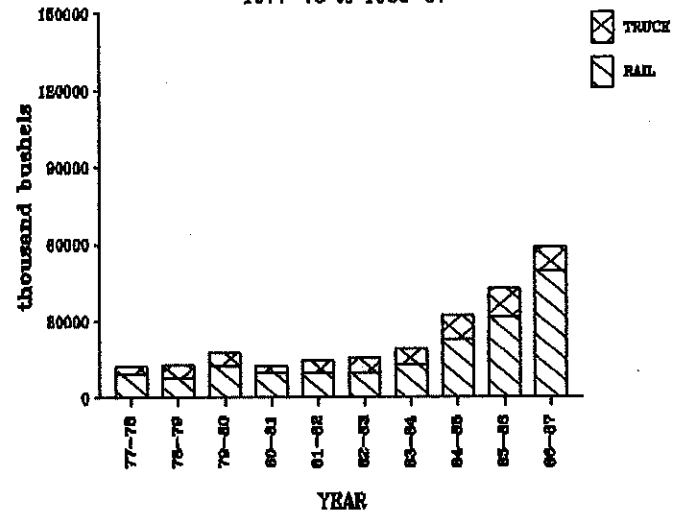
**HRS TO D/S**  
1977-78 to 1986-87



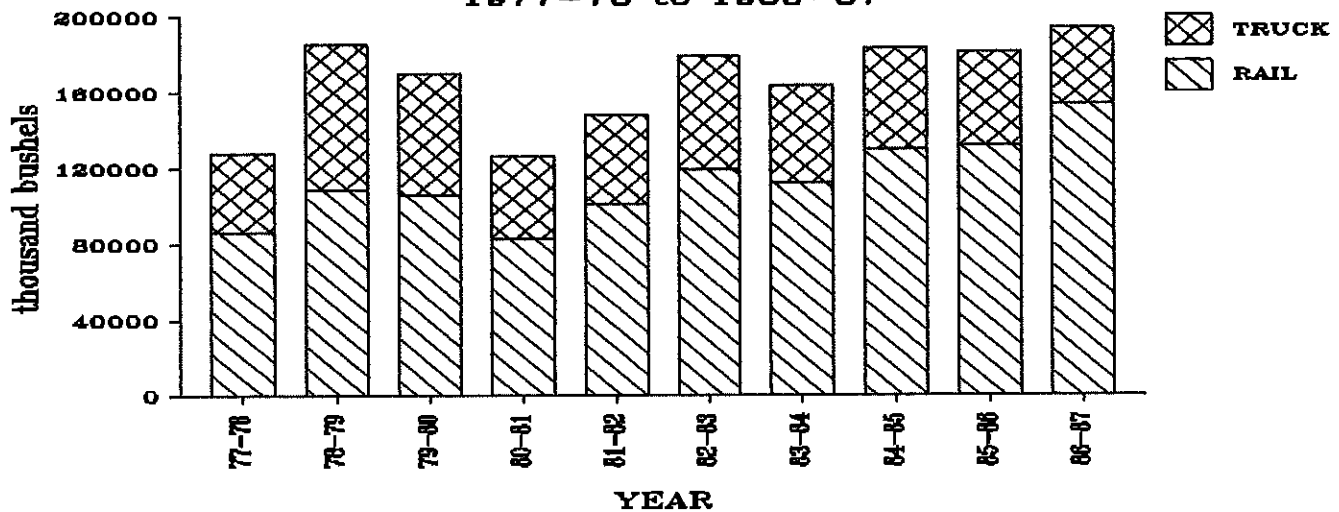
**HRS TO WEST**  
1977-78 to 1986-87



**HRS TO MISC**  
1977-78 to 1986-87



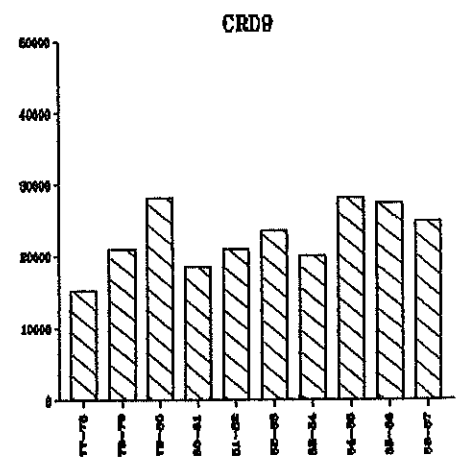
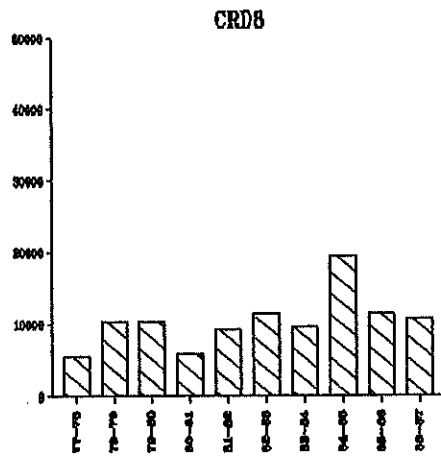
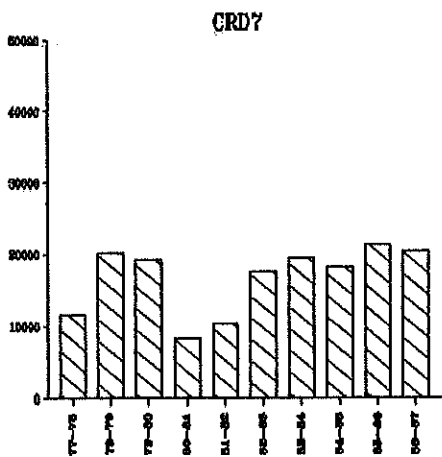
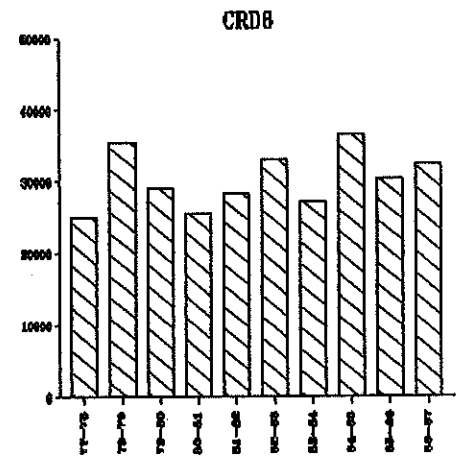
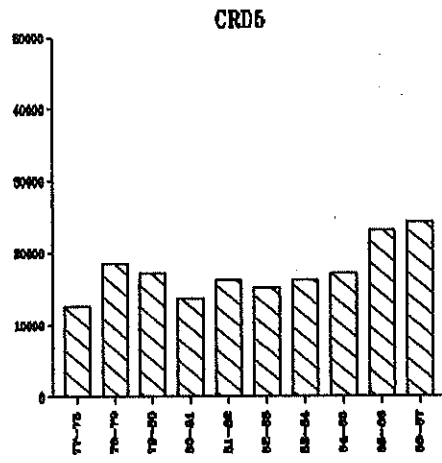
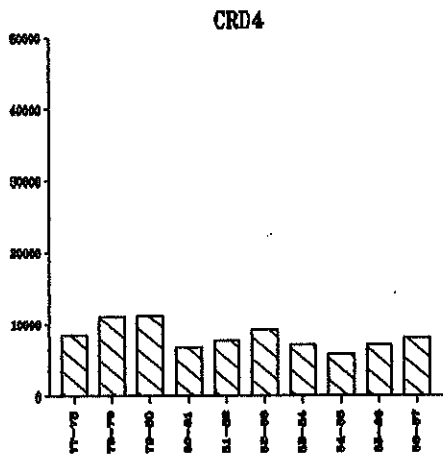
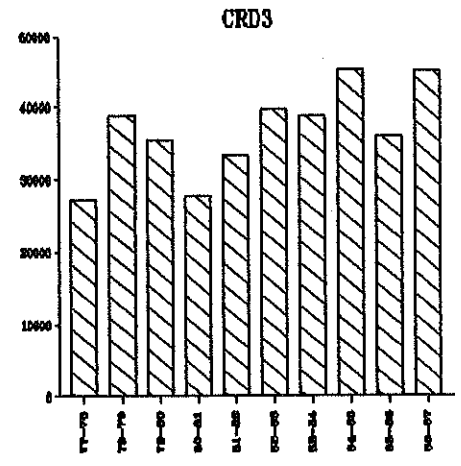
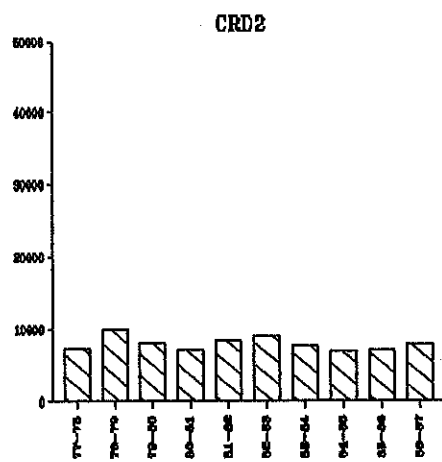
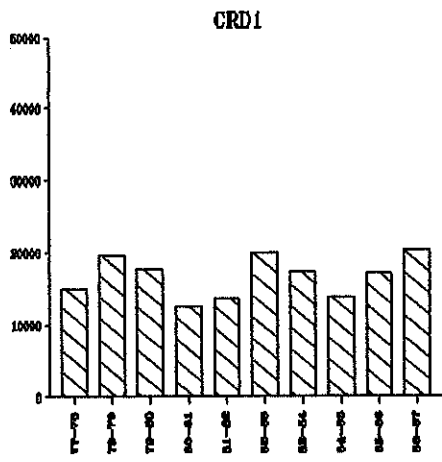
**ALL HRS SHIPMENTS**  
1977-78 to 1986-87



NORTH DAKOTA HARD RED SPRING WHEAT MOVEMENTS  
BY CROP REPORTING DISTRICT ORIGIN

YEAR	Crop Reporting District									TOTAL
	1	2	3	4	5	6	7	8	9	
(thousand bu.)										
1976-77	12,657 (10%)	6,807 (5%)	24,053 (19%)	8,209 (7%)	15,253 (12%)	22,000 (18%)	14,182 (11%)	7,782 (6%)	13,033 (11%)	123,976 (100%)
1977-78	15,009 (11%)	7,370 (6%)	27,331 (21%)	8,477 (7%)	12,521 (10%)	25,013 (20%)	11,563 (9%)	5,567 (4%)	15,103 (12%)	127,954 (100%)
1978-79	19,640 (11%)	10,028 (5%)	38,757 (21%)	11,116 (6%)	18,546 (10%)	35,425 (19%)	20,117 (11%)	10,317 (6%)	20,977 (11%)	184,823 (100%)
1979-80	17,678 (10%)	8,124 (5%)	35,407 (21%)	11,230 (7%)	17,253 (10%)	29,088 (17%)	19,327 (11%)	10,284 (6%)	28,182 (12%)	169,573 (100%)
1980-81	12,552 (10%)	7,182 (6%)	27,836 (22%)	6,793 (5%)	13,584 (11%)	25,503 (20%)	8,241 (7%)	5,832 (5%)	18,593 (15%)	126,116 (100%)
1981-82	13,703 (9%)	8,468 (6%)	33,325 (23%)	7,690 (5%)	16,187 (11%)	28,331 (19%)	10,373 (7%)	9,220 (6%)	20,873 (14%)	148,168 (100%)
1982-83	20,007 (11%)	9,074 (5%)	39,668 (22%)	9,217 (5%)	15,149 (8%)	33,061 (18%)	17,568 (10%)	11,457 (6%)	23,599 (13%)	178,800 (100%)
1983-84	17,360 (11%)	7,662 (5%)	38,766 (24%)	7,121 (4%)	16,189 (10%)	27,265 (17%)	19,397 (12%)	9,518 (6%)	20,027 (12%)	163,305 (100%)
1984-85	13,898 (8%)	7,035 (4%)	45,117 (25%)	5,923 (3%)	17,297 (9%)	36,598 (20%)	18,091 (10%)	10,937 (6%)	28,213 (15%)	183,109 (100%)
1985-86	17,154 (9%)	7,247 (4%)	35,921 (20%)	7,160 (4%)	23,066 (13%)	30,432 (17%)	21,285 (12%)	11,428 (6%)	27,395 (15%)	181,089 (100%)
1986-87	20,393 (11%)	7,885 (4%)	44,955 (23%)	8,137 (4%)	24,189 (12%)	32,423 (17%)	20,379 (11%)	10,701 (6%)	24,901 (13%)	193,962 (100%)
3 Year Average	17,148 (9%)	7,389 (4%)	41,998 (22%)	7,073 (4%)	21,517 (11%)	33,151 (18%)	19,918 (11%)	13,836 (7%)	26,836 (14%)	88,861 (100%)

HARD RED SPRING WHEAT SHIPMENTS BY CROP REPORTING DISTRICT  
(thousand bushels)



**DURUM**

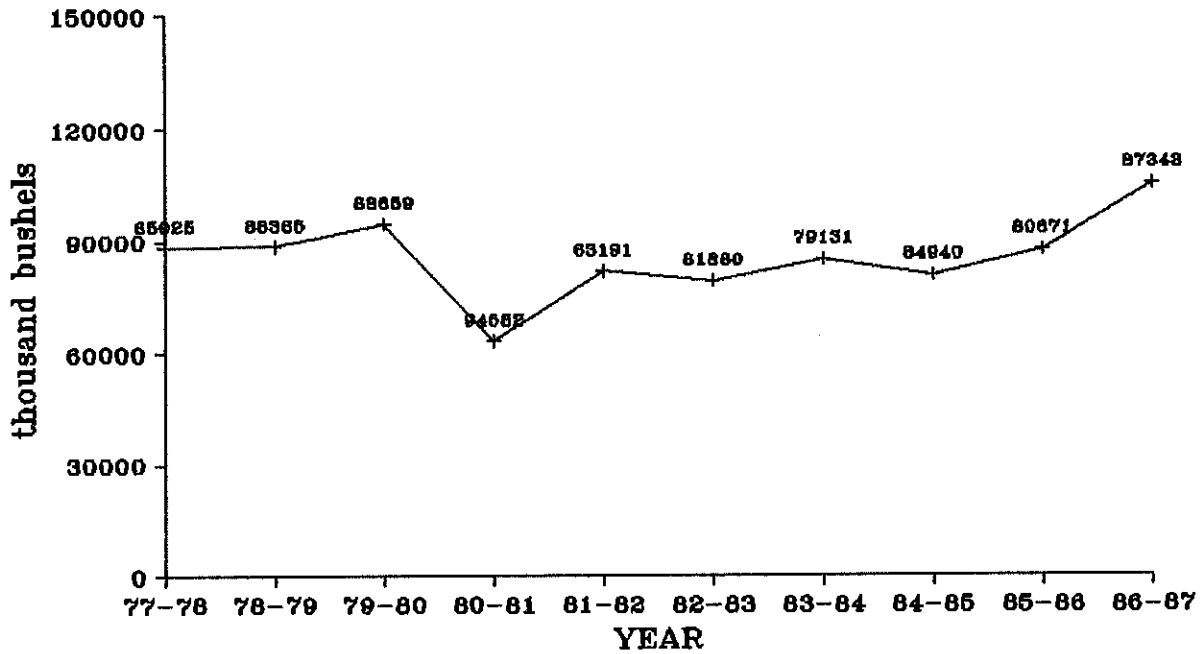


NORTH DAKOTA DURUM SHIPMENTS  
BY DESTINATION

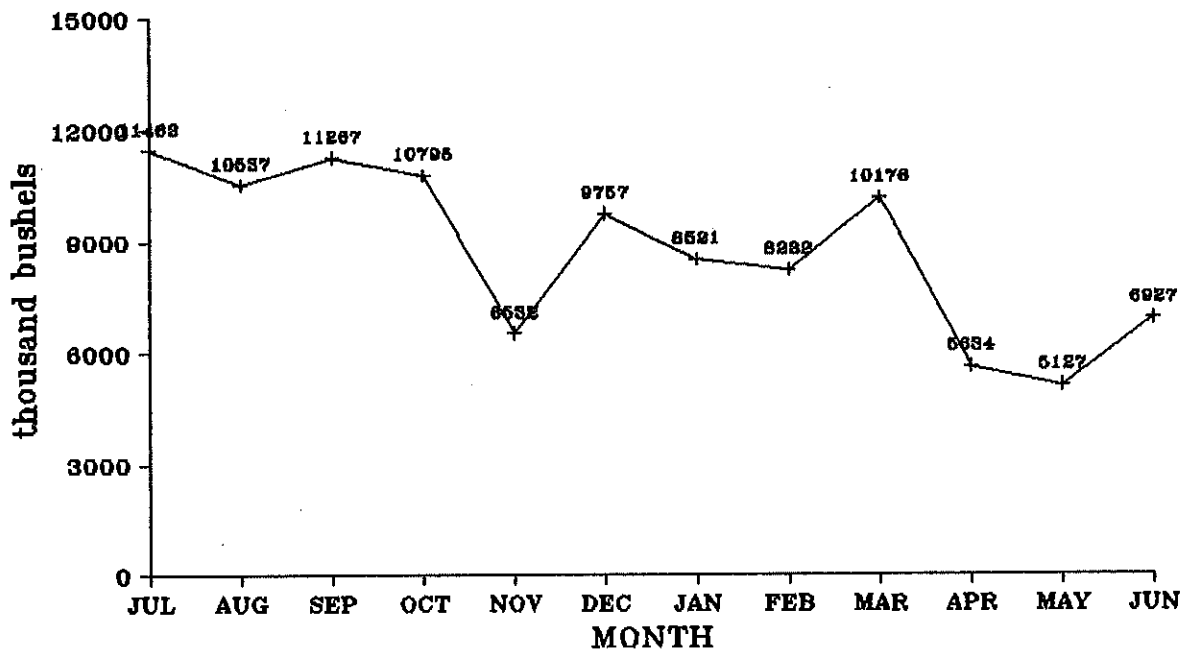
YEAR	MINNEAPOLIS-ST. PAUL	DULUTH-SUPERIOR	WEST	MISC. MARKETS	TOTAL
	(thousand bu.)				
1976-77	17,024 (26%)	35,537 (55%)	1,636 (3%)	10,827 (17%)	65,024 (100%)
1977-78	16,478 (19%)	61,990 (70%)	1,339 (2%)	8,559 (10%)	88,366 (100%)
1978-79	18,797 (21%)	60,973 (69%)	1,545 (2%)	7,345 (8%)	88,660 (100%)
1979-80	26,712 (28%)	57,379 (61%)	1,506 (2%)	8,985 (9%)	94,582 (100%)
1980-81	15,046 (24%)	38,502 (61%)	483 (1%)	9,160 (14%)	63,191 (100%)
1981-82	19,768 (24%)	49,242 (60%)	621 (1%)	12,250 (15%)	81,881 (100%)
1982-83	22,010 (28%)	42,820 (54%)	735 (0.9%)	13,567 (17%)	79,132 (100%)
1983-84	23,842 (28%)	43,143 (51%)	1,379 (2%)	16,578 (20%)	84,941 (100%)
1984-85	18,352 (23%)	48,137 (60%)	1,420 (2%)	12,761 (16%)	80,670 (100%)
1985-86	23,498 (27%)	38,026 (44%)	2,925 (3%)	22,895 (26%)	87,344 (100%)
1986-87	17,350 (17%)	46,150 (44%)	2,969 (3%)	38,498 <sup>a</sup> (37%)	104,968 (100%)
3 Year Average	19,733 (22%)	44,104 (48%)	2,438 (3%)	24,718 (27%)	90,994 (100%)

<sup>a</sup> Miscellaneous markets for durum include Midland/Southwest States (16,334,676 bushels or 16%), Other Minnesota/Wisconsin (9,926,887 bushels or 9%), North Dakota destinations (5,686,365 or 5%), and all other miscellaneous destinations (6,550,516 bushels or 7%).

## DURUM WHEAT SHIPMENTS 1977-78 to 1986-87



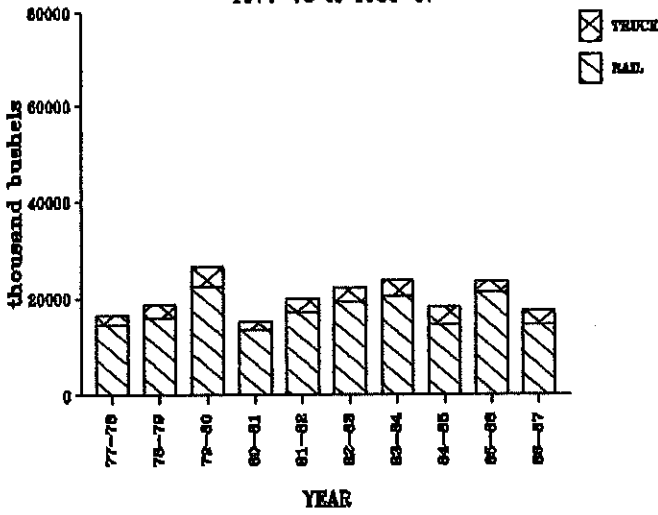
## DURUM WHEAT SHIPMENTS BY MONTH, 1986-87



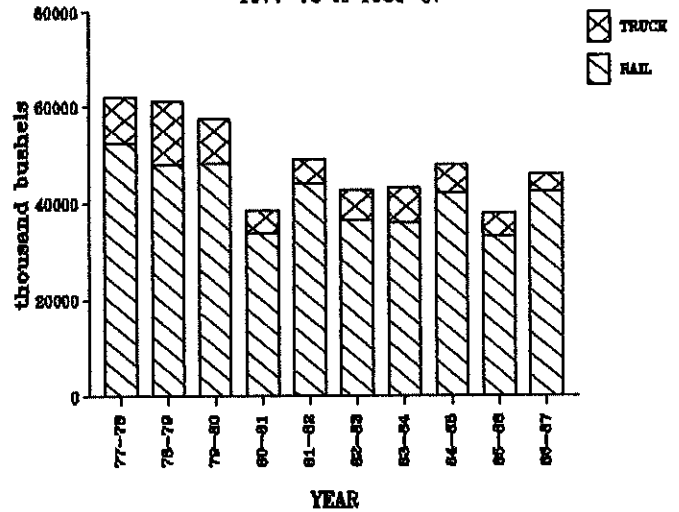
NORTH DAKOTA DURUM SHIPMENTS BY RAIL AND TRUCK AND DESTINATION

YEAR	<u>MINNEAPOLIS-ST. PAUL</u>		<u>DULUTH-SUPERIOR</u>		<u>WEST</u>		<u>MISC. MARKETS</u>		<u>TOTAL</u>	
	Rail	Truck	Rail	Truck	Rail	Truck	Rail	Truck	Rail	Truck
(thousand bu.)										
1976-77	14,664 (86%)	2,360 (14%)	29,747 (84%)	5,790 (16%)	481 (29%)	1,155 (71%)	9,681 (89%)	1,147 (11%)	54,573 (84%)	10,452 (16%)
1977-78	14,576 (88%)	1,902 (12%)	52,552 (85%)	9,438 (15%)	871 (65%)	468 (35%)	7,419 (87%)	1,139 (13%)	75,418 (85%)	12,947 (15%)
1978-79	15,950 (85%)	2,847 (15%)	47,950 (79%)	13,023 (21%)	1,341 (87%)	203 (13%)	5,797 (79%)	1,548 (21%)	71,038 (80%)	17,621 (20%)
1979-80	22,408 (81%)	4,304 (19%)	48,415 (84%)	8,964 (16%)	1,254 (83%)	252 (17%)	7,178 (80%)	1,807 (20%)	79,255 (84%)	15,327 (16%)
1980-81	13,599 (90%)	1,447 (10%)	33,852 (88%)	4,650 (12%)	353 (73%)	130 (27%)	7,834 (86%)	1,326 (14%)	55,638 (88%)	7,553 (12%)
1981-82	17,013 (86%)	2,754 (14%)	43,972 (89%)	5,271 (11%)	443 (71%)	177 (29%)	10,662 (87%)	1,588 (13%)	72,090 (88%)	9,790 (12%)
1982-83	19,464 (88%)	2,546 (12%)	36,670 (86%)	6,149 (14%)	541 (73%)	194 (26%)	10,034 (74%)	3,533 (26%)	66,710 (84%)	12,422 (16%)
1983-84	20,380 (86%)	3,462 (14%)	36,166 (84%)	6,976 (16%)	1,322 (96%)	56 (4%)	14,546 (88%)	2,032 (12%)	72,415 (85%)	12,527 (15%)
1984-85	14,652 (80%)	3,700 (20%)	42,238 (88%)	5,899 (12%)	1,241 (87%)	180 (13%)	9,856 (77%)	2,905 (23%)	67,987 (84%)	12,684 (16%)
1985-86	21,191 (90%)	2,307 (10%)	33,330 (88%)	4,695 (12%)	2,850 (97%)	75 (3%)	18,695 (82%)	4,200 (18%)	76,067 (87%)	11,278 (13%)
1986-87	14,679 (85%)	2,671 (15%)	42,543 (92%)	3,608 (8%)	2,932 (99%)	37 (1%)	34,843 (91%)	3,656 (9%)	94,996 (91%)	9,972 (9%)
3 Year Average	16,841 (85%)	2,893 (15%)	39,370 (89%)	4,734 (11%)	2,341 (96%)	97 (4%)	21,131 (85%)	3,587 (15%)	79,683 (88%)	11,311 (12%)

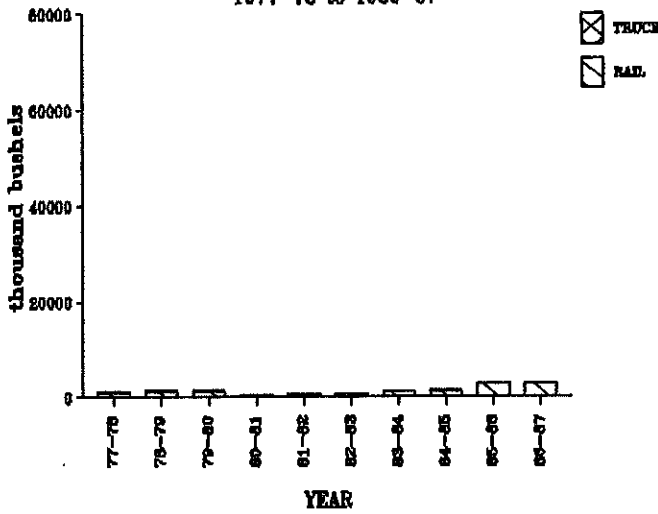
**DURUM TO MPLS**  
1977-78 to 1986-87



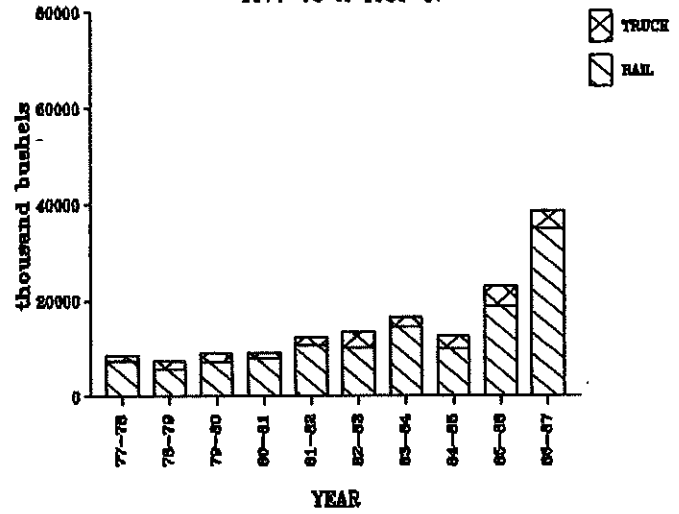
**DURUM TO D/S**  
1977-78 to 1986-87



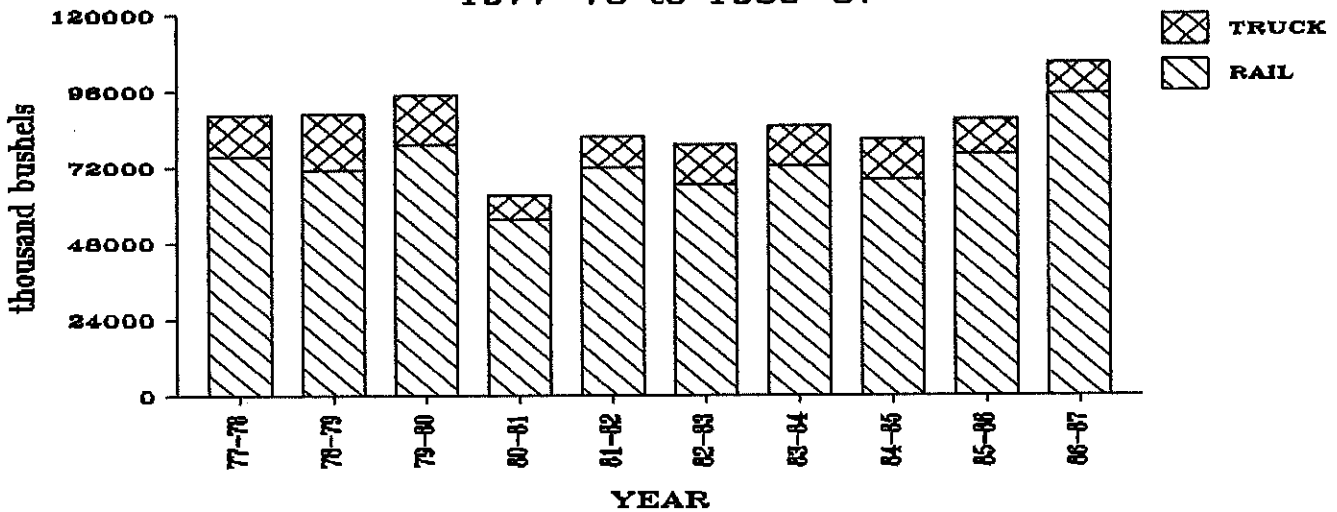
**DURUM TO WEST**  
1977-78 to 1986-87



**DURUM TO MISC**  
1977-78 to 1986-87



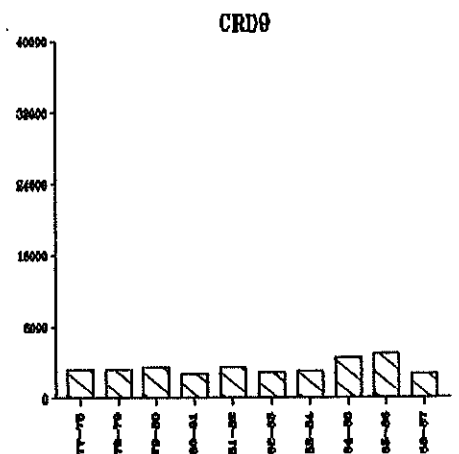
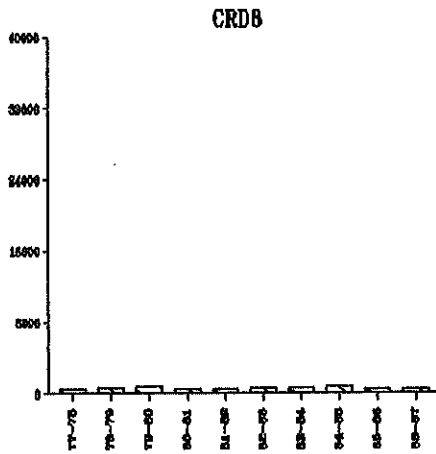
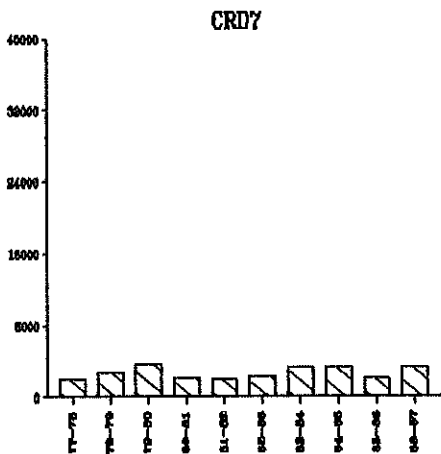
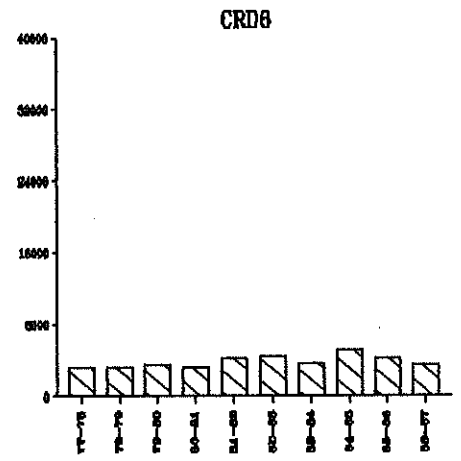
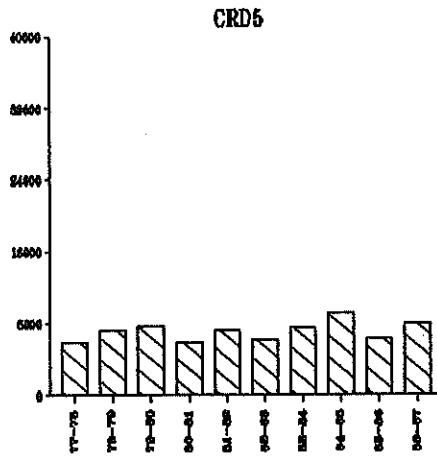
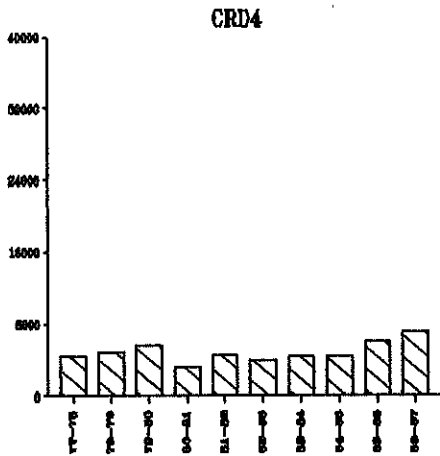
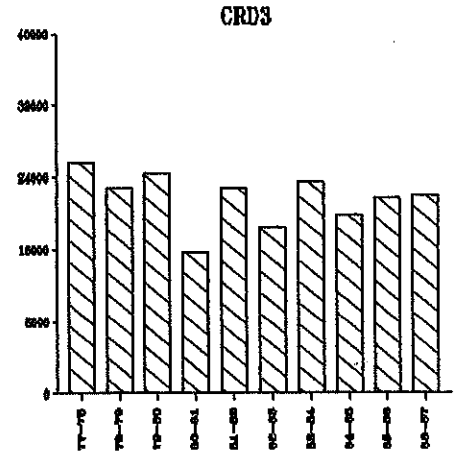
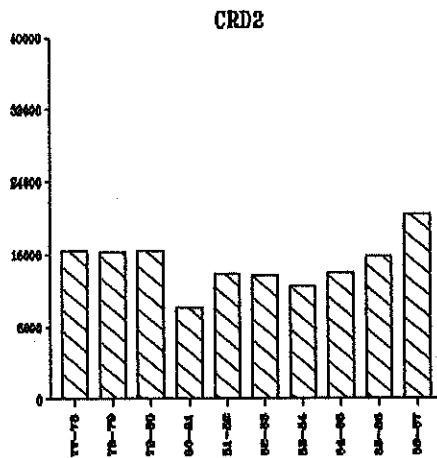
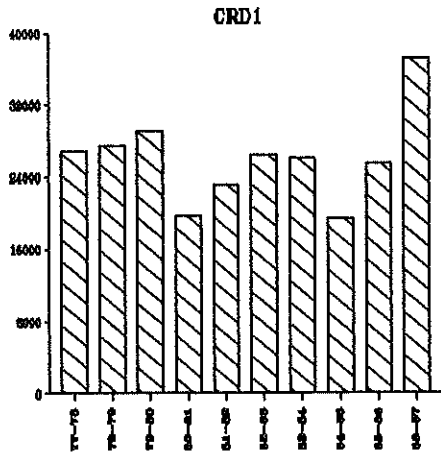
**ALL DURUM SHIPMENTS**  
1977-78 to 1986-87



NORTH DAKOTA DURUM SHIPMENTS  
BY CROP REPORTING DISTRICT ORIGIN

YEAR	Crop Reporting District									TOTAL
	1	2	3	4	5	6	7	8	9	
	(thousand bu.)									
1976-77	19,420 (30%)	11,279 (17%)	18,168 (28%)	3,728 (6%)	4,960 (8%)	2,573 (4%)	2,013 (3%)	760 (1%)	2,123 (3%)	65,024 (100%)
1977-78	26,813 (30%)	16,378 (19%)	25,707 (29%)	4,449 (5%)	5,945 (7%)	3,269 (4%)	2,071 (2%)	469 (1%)	3,266 (4%)	88,367 (100%)
1978-79	27,496 (31%)	16,256 (18%)	22,902 (26%)	4,808 (5%)	7,269 (8%)	3,251 (4%)	2,755 (3%)	728 (1%)	3,197 (4%)	88,662 (100%)
1979-80	29,060 (31%)	16,472 (17%)	24,453 (26%)	5,512 (6%)	7,670 (8%)	3,432 (4%)	3,619 (4%)	800 (1%)	3,565 (4%)	94,583 (100%)
1980-81	19,774 (31%)	10,223 (16%)	15,644 (25%)	3,129 (5%)	5,817 (9%)	3,150 (5%)	2,177 (3%)	503 (1%)	2,774 (4%)	63,191 (100%)
1981-82	23,105 (28%)	13,973 (17%)	22,807 (28%)	4,467 (5%)	7,272 (9%)	4,238 (5%)	2,045 (2%)	448 (1%)	3,525 (4%)	81,881 (100%)
1982-83	26,387 (33%)	13,835 (17%)	18,509 (23%)	3,906 (5%)	6,237 (8%)	4,446 (6%)	2,268 (3%)	616 (1%)	2,929 (4%)	79,132 (100%)
1983-84	26,080 (31%)	12,612 (15%)	23,621 (28%)	4,405 (5%)	7,531 (9%)	3,644 (4%)	3,349 (4%)	629 (1%)	3,070 (4%)	84,941 (100%)
1984-85	19,441 (24%)	14,079 (17%)	19,872 (25%)	4,423 (5%)	9,092 (11%)	5,115 (6%)	3,341 (4%)	795 (1%)	4,511 (6%)	80,670 (100%)
1985-86	25,555 (29%)	15,786 (18%)	21,760 (25%)	5,956 (7%)	6,383 (7%)	4,246 (5%)	2,192 (3%)	553 (1%)	4,915 (6%)	87,344 (100%)
1986-87	37,163 (35%)	20,465 (19%)	22,148 (21%)	7,038 (7%)	7,989 (7%)	3,536 (3%)	3,421 (3%)	505 (0%)	2,703 (3%)	104,968 (100%)
3 Year Average	27,386 (30%)	16,777 (18%)	21,260 (23%)	5,806 (6%)	7,821 (9%)	4,299 (5%)	2,985 (3%)	618 (1%)	4,403 (4%)	90,994 (100%)

DURUM SHIPMENTS BY CROP REPORTING DISTRICT  
(thousand bushels)



# BARLEY

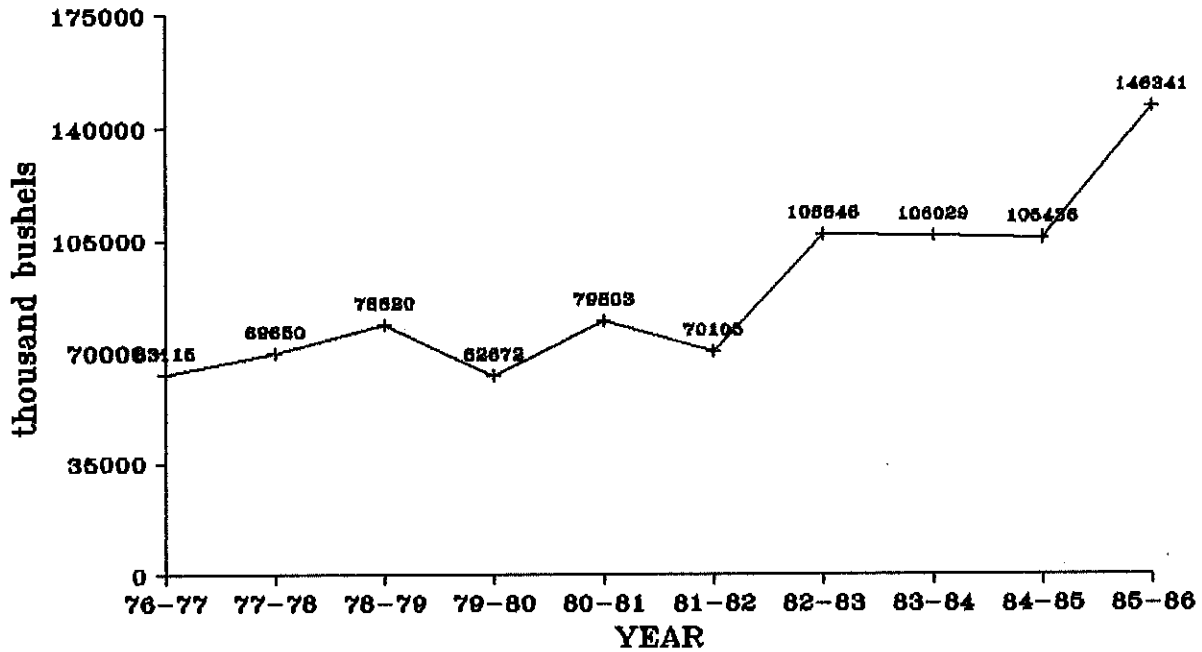
NORTH DAKOTA BARLEY SHIPMENTS  
BY DESTINATION

YEAR	MINNEAPOLIS-ST. PAUL	DULUTH-SUPERIOR	WEST	MISC. MARKETS	TOTAL
	(thousand bu.)				
1976-77	39,728 (54%)	26,672 (36%)	126 (1%)	6,788 (9%)	73,314 (100%)
1977-78	25,006 (40%)	22,394 (35%)	792 (1%)	14,923 (24%)	63,115 (100%)
1978-79	27,092 (39%)	12,786 (18%)	1,204 (2%)	28,566 (41%)	69,648 (100%)
1979-80	29,169 (37%)	22,643 (29%)	753 (1%)	26,056 (33%)	78,621 (100%)
1980-81	20,034 (32%)	14,214 (23%)	2,147 (3%)	26,277 (42%)	62,672 (100%)
1981-82	19,942 (25%)	31,671 (40%)	1,156 (1%)	27,032 (34%)	79,801 (100%)
1982-83	20,857 (30%)	12,544 (18%)	1,766 (3%)	34,939 (50%)	70,106 (100%)
1983-84	21,394 (20%)	38,578 (36%)	4,290 (4%)	42,383 (40%)	106,645 (100%)
1984-85	22,827 (22%)	26,665 (25%)	9,473 (9%)	47,064 (44%)	106,030 (100%)
1985-86	20,434 (19%)	8,175 (8%)	9,554 (9%)	67,273 (64%)	105,436 (100%)
1986-87	29,521 (20%)	10,136 (7%)	42,849 (29%)	63,836 <sup>a</sup> (44%)	146,342 (100%)
3 Year Average	24,260 (20%)	14,992 (13%)	20,625 (17%)	59,391 (50%)	119,269 (100%)

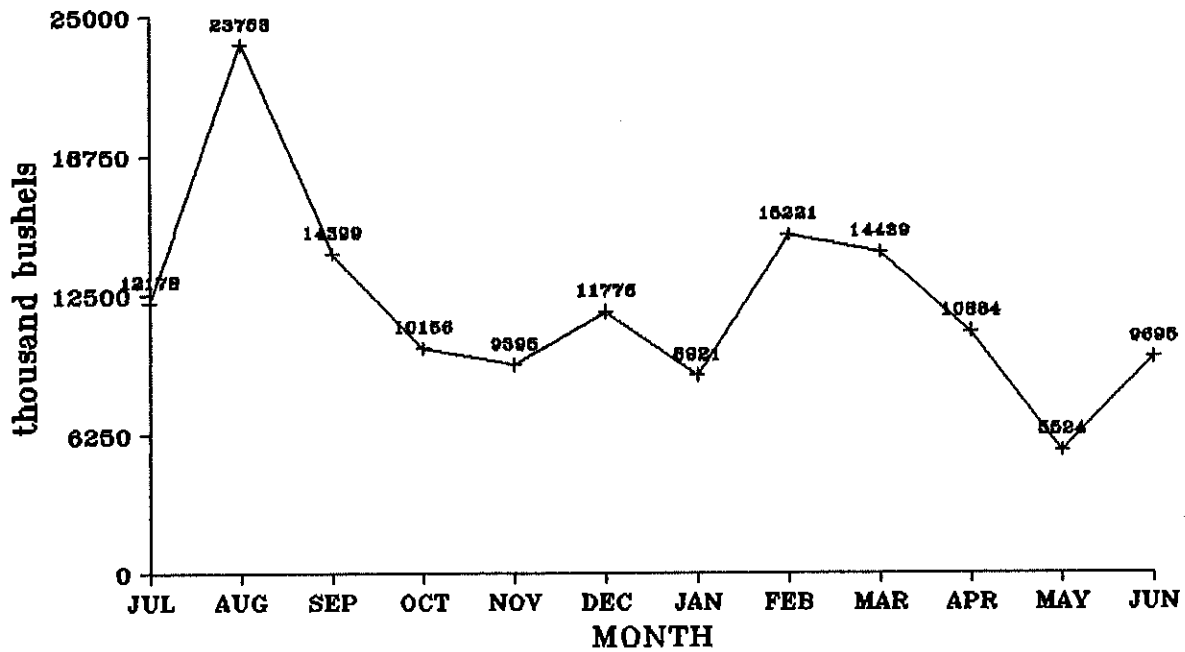
<sup>a</sup> Miscellaneous markets for barley include Other Minnesota/Wisconsin (21,361,365 bushels or 15%), Midland/Southwest States (19,153,839 bushels or 13%), North Dakota destinations (14,804,866 bushels or 10%), and all other miscellaneous destinations (8,515,724 bushels or 6%).



## BARLEY SHIPMENTS 1977-78 to 1986-87



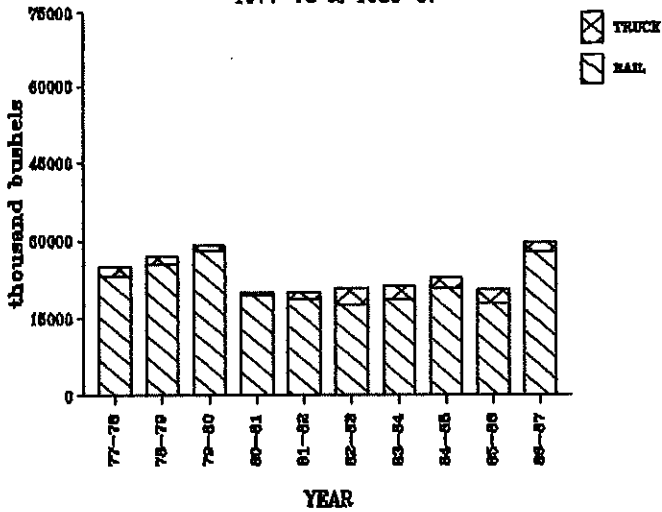
## BARLEY SHIPMENTS BY MONTH, 1986-87



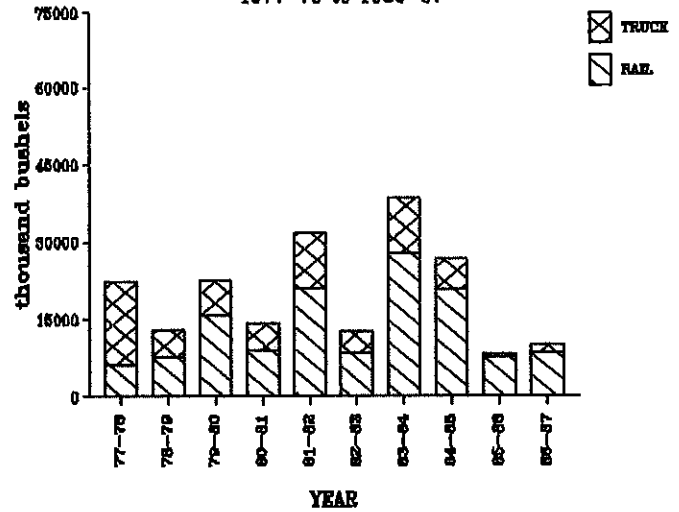
NORTH DAKOTA BARLEY SHIPMENTS BY RAIL AND TRUCK AND DESTINATION

YEAR	<u>MINNEAPOLIS-ST. PAUL.</u>		<u>DULUTH-SUPERIOR</u>		<u>WEST</u>		<u>MISC. MARKETS</u>		<u>TOTAL</u>	
	Rail	Truck	Rail	Truck	Rail	Truck	Rail	Truck	Rail	Truck
(thousand bu.)										
1976-77	37,974 (96%)	1,753 (4%)	5,792 (22%)	20,880 (78%)	74 (58%)	52 (42%)	4,329 (64%)	2,459 (36%)	48,169 (66%)	25,144 (34%)
1977-78	23,111 (92%)	1,895 (8%)	6,145 (27%)	16,249 (73%)	323 (41%)	469 (59%)	11,583 (78%)	3,340 (22%)	41,162 (65%)	21,953 (35%)
1978-79	25,414 (94%)	1,678 (6%)	7,578 (59%)	5,210 (41%)	677 (56%)	527 (44%)	18,656 (65%)	9,910 (35%)	52,325 (75%)	17,325 (25%)
1979-80	27,963 (96%)	1,206 (4%)	15,697 (69%)	6,945 (31%)	301 (40%)	452 (60%)	17,728 (68%)	8,328 (32%)	61,689 (79%)	16,931 (21%)
1980-81	19,535 (98%)	499 (2%)	9,025 (63%)	5,189 (37%)	92 (4%)	2,055 (96%)	19,133 (73%)	7,144 (27%)	47,785 (76%)	14,887 (24%)
1981-82	18,619 (93%)	1,323 (7%)	20,889 (66%)	10,782 (34%)	247 (21%)	910 (79%)	20,189 (75%)	6,844 (25%)	59,943 (75%)	19,858 (25%)
1982-83	17,680 (85%)	3,176 (15%)	8,484 (68%)	4,060 (32%)	179 (10%)	1,586 (90%)	28,994 (83%)	5,946 (17%)	55,337 (79%)	14,768 (21%)
1983-84	18,763 (88%)	2,631 (12%)	27,896 (72%)	10,682 (28%)	3,782 (88%)	509 (12%)	36,784 (87%)	5,599 (13%)	87,225 (82%)	19,420 (18%)
1984-85	20,821 (91%)	2,006 (9%)	20,822 (78%)	5,843 (22%)	8,508 (90%)	965 (10%)	37,750 (80%)	9,314 (20%)	87,901 (83%)	18,128 (17%)
1985-86	17,888 (88%)	2,546 (12%)	7,610 (93%)	565 (7%)	8,444 (88%)	1,110 (12%)	57,775 (86%)	9,498 (14%)	91,717 (87%)	13,719 (13%)
1986-87	27,731 (94%)	1,789 (6%)	8,429 (83%)	1,707 (17%)	42,590 (99%)	259 (1%)	57,444 (90%)	6,392 (10%)	136,194 (93%)	10,148 (7%)
3 Year Average	22,147 (91%)	2,114 (9%)	12,287 (82%)	2,705 (18%)	19,847 (96%)	778 (4%)	50,990 (86%)	8,401 (14%)	105,271 (88%)	13,998 (12%)

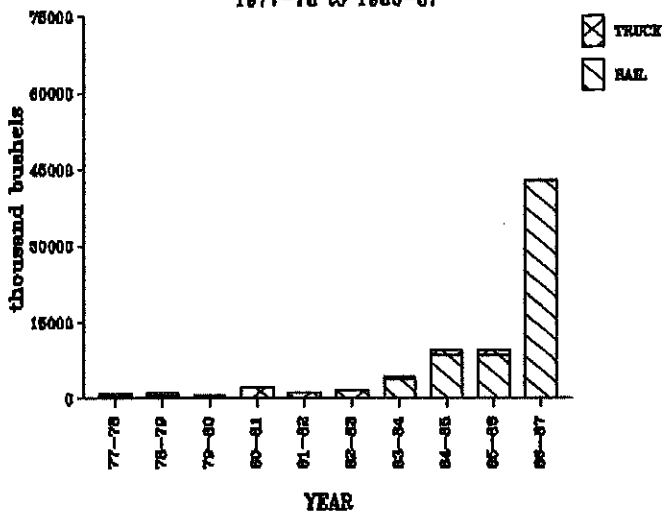
**BARLEY TO MPLS**  
1977-78 to 1986-87



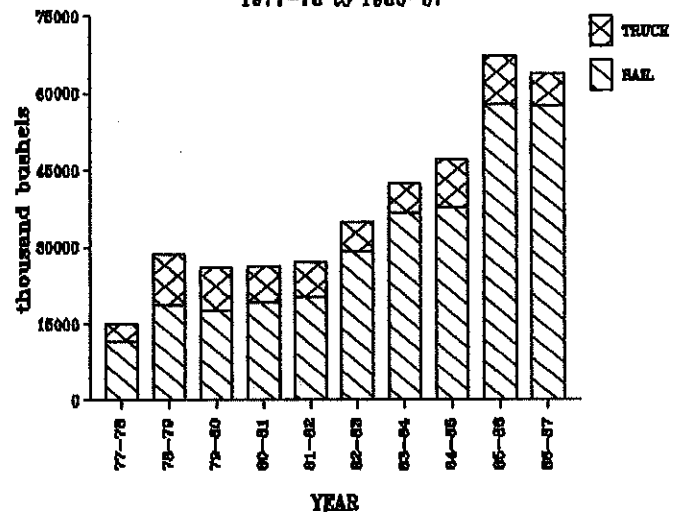
**BARLEY TO D/S**  
1977-78 to 1986-87



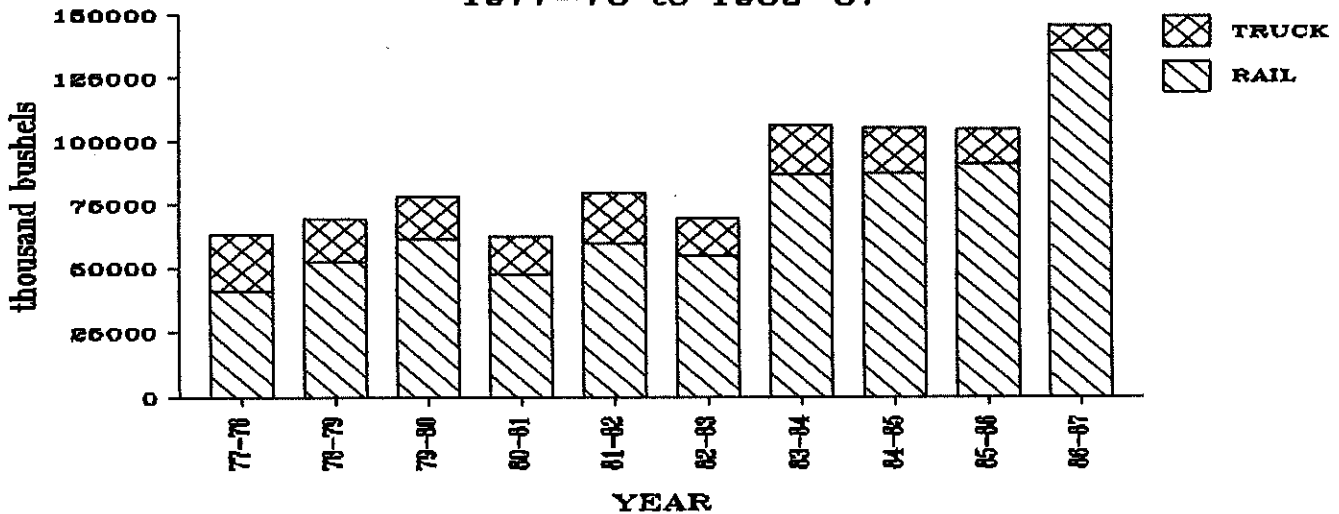
**BARLEY TO WEST**  
1977-78 to 1986-87



**BARLEY TO MISC**  
1977-78 to 1986-87



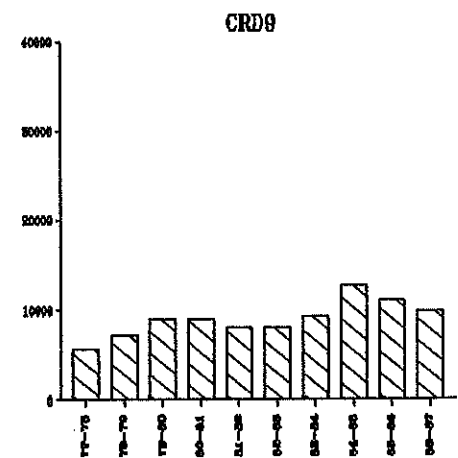
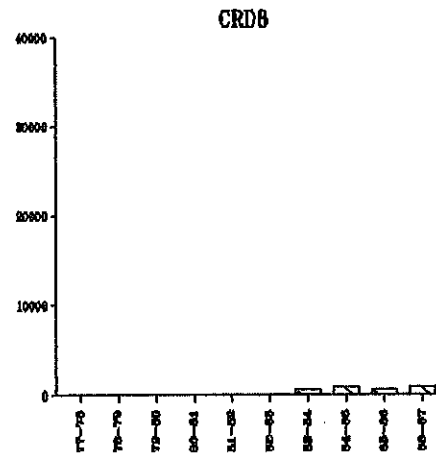
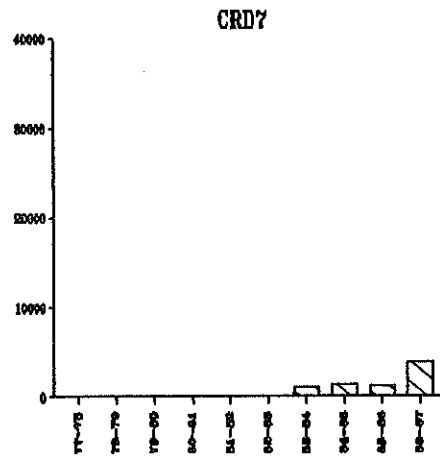
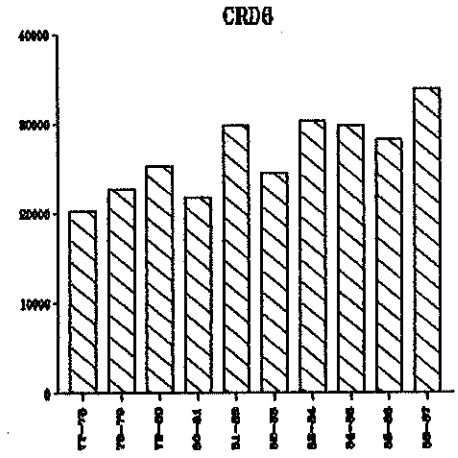
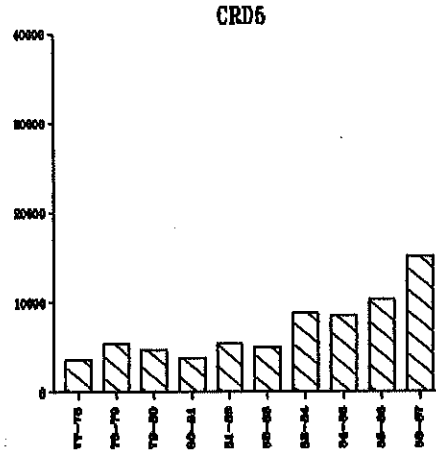
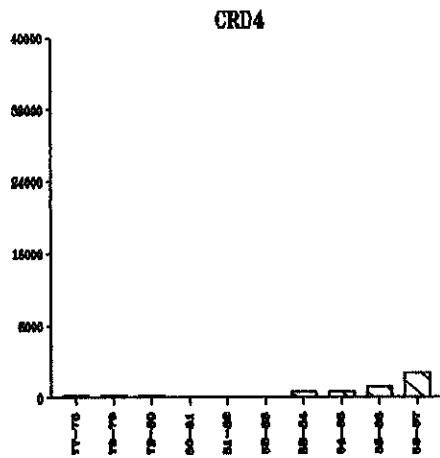
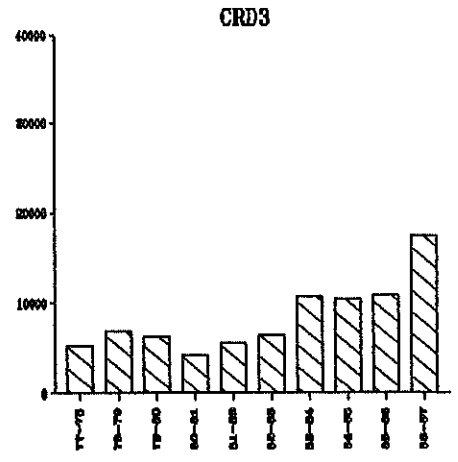
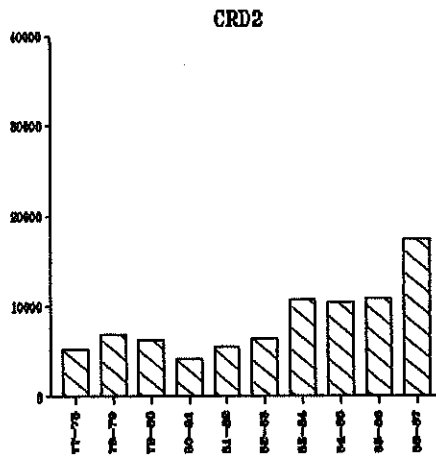
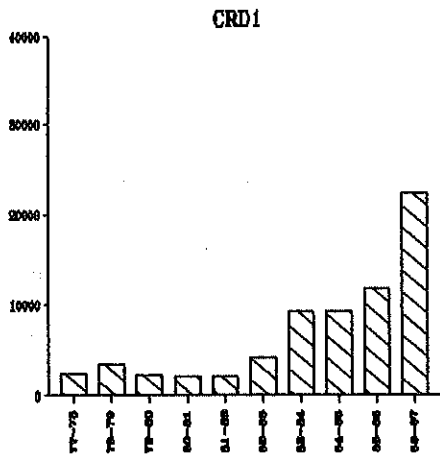
**ALL BARLEY SHIPMENTS**  
1977-78 to 1986-87



NORTH DAKOTA BARLEY SHIPMENTS  
BY CROP REPORTING DISTRICT ORIGIN

YEAR	Crop Reporting District									TOTAL
	1	2	3	4	5	6	7	8	9	
	(thousand bu.)									
1976-77	3,229 (4%)	7,761 (11%)	30,727 (42%)	345 (1%)	4,773 (7%)	22,440 (31%)	300 (0%)	237 (0%)	3,501 (5%)	73,313 (100%)
1977-78	2,502 (4%)	5,220 (8%)	25,417 (40%)	175 (0%)	3,682 (6%)	20,258 (32%)	94 (0%)	20 (0%)	5,747 (9%)	63,115 (100%)
1978-79	3,515 (5%)	6,930 (10%)	23,449 (34%)	164 (0%)	5,423 (8%)	22,739 (33%)	120 (0%)	122 (0%)	7,185 (10%)	69,647 (100%)
1979-80	2,355 (3%)	6,267 (8%)	30,625 (39%)	214 (0%)	4,697 (6%)	25,247 (32%)	130 (0%)	106 (0%)	8,980 (11%)	78,621 (100%)
1980-81	2,162 (3%)	4,217 (7%)	21,561 (36%)	56 (0%)	3,782 (6%)	21,812 (35%)	13 (0%)	21 (0%)	9,049 (14%)	62,673 (100%)
1981-82	2,175 (3%)	5,571 (7%)	28,506 (36%)	89 (0%)	5,504 (7%)	29,773 (37%)	12 (0%)	63 (0%)	8,108 (10%)	79,801 (100%)
1982-83	4,304 (6%)	6,458 (9%)	21,380 (30%)	139 (0%)	5,028 (7%)	24,481 (35%)	57 (0%)	113 (0%)	8,146 (12%)	70,105 (100%)
1983-84	9,304 (9%)	10,838 (10%)	35,568 (33%)	612 (1%)	8,891 (8%)	30,281 (28%)	1,125 (1%)	672 (1%)	9,354 (9%)	106,645 (100%)
1984-85	9,245 (9%)	10,420 (10%)	32,002 (30%)	692 (1%)	8,587 (8%)	29,904 (28%)	1,386 (1%)	1,006 (1%)	12,789 (12%)	106,030 (100%)
1985-86	11,790 (11%)	10,918 (10%)	29,931 (28%)	1,328 (1%)	10,275 (10%)	28,258 (27%)	1,232 (1%)	611 (1%)	11,092 (11%)	105,436 (100%)
1986-87	22,443 (15%)	17,501 (12%)	40,032 (27%)	2,698 (2%)	15,079 (10%)	33,828 (23%)	3,883 (3%)	945 (1%)	9,931 (7%)	146,342 (100%)
3 Year Average	14,493 (12%)	12,946 (11%)	33,988 (28%)	1,573 (1%)	11,314 (9%)	30,663 (26%)	2,167 (2%)	854 (1%)	11,271 (9%)	119,269 (100%)

BARLEY SHIPMENTS BY CROP REPORTING DISTRICT  
(thousand bushels)



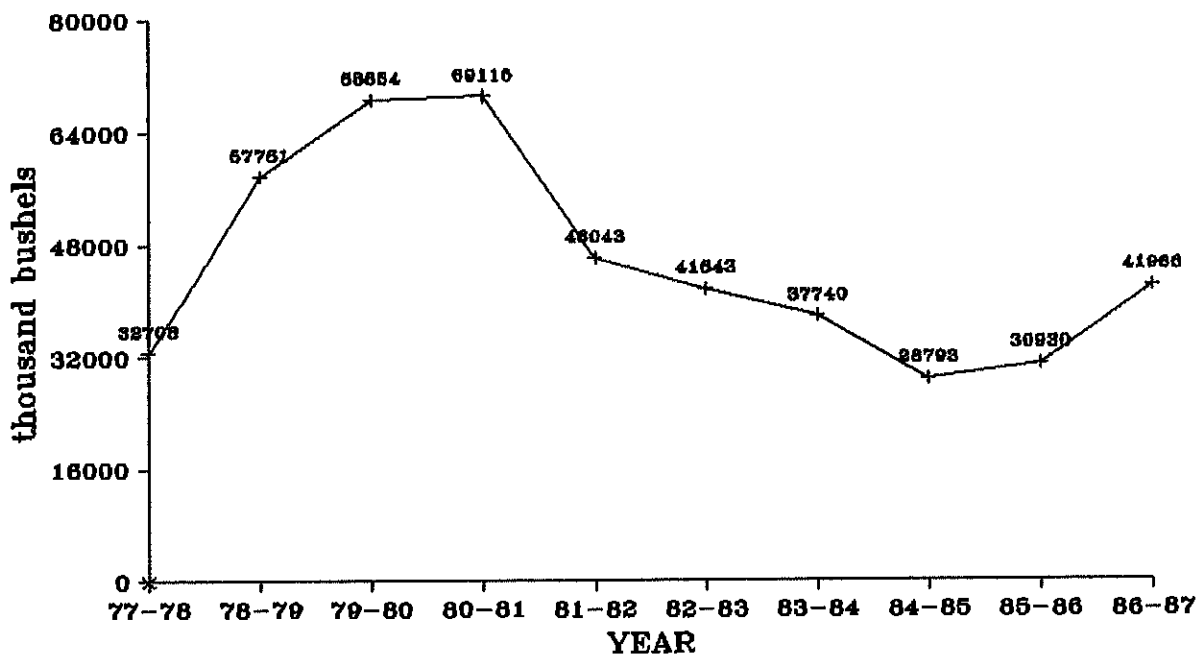
# SUNFLOWER SEED

NORTH DAKOTA SUNFLOWER SEED SHIPMENTS BY DESTINATION

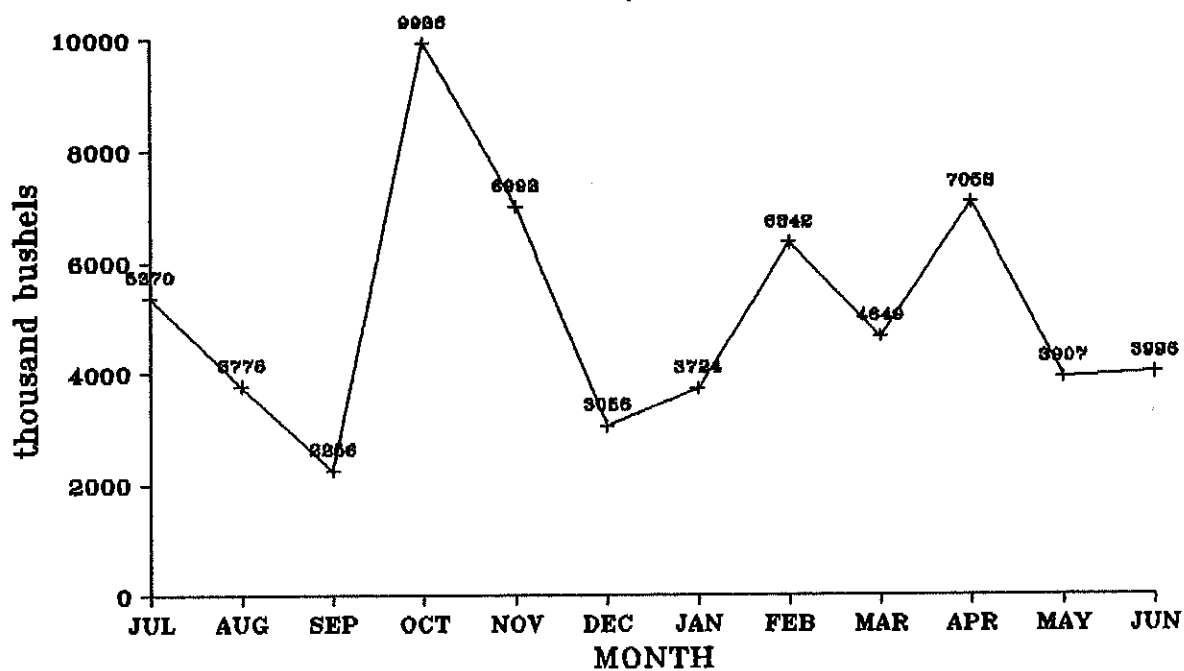
YEAR	MINNEAPOLIS-ST. PAUL	DULUTH-SUPERIOR	OTHER MINN.	MISC. MARKETS	TOTAL
	(thousand bu.)				
1976-77	863 (6%)	8,693 (56%)	1,369 (9%)	4,697 (30%)	15,622 (100%)
1977-78	2,992 (6%)	38,019 (74%)	3,220 (6%)	7,047 (14%)	51,278 (100%)
1978-79	4,790 (6%)	63,178 (80%)	5,608 (7%)	5,677 (7%)	79,253 (100%)
1979-80	6,154 (6%)	69,422 (72%)	8,215 (9%)	12,149 (13%)	95,740 (100%)
1980-81	10,167 (9%)	67,277 (59%)	8,398 (9%)	29,024 (25%)	114,866 (100%)
1981-82	6,664 (6%)	70,391 (63%)	3,479 (3%)	30,962 (28%)	111,496 (100%)
1982-83	14,374 (12%)	64,849 (53%)	9,282 (8%)	33,240 (27%)	121,744 (100%)
1983-84	11,741 (11%)	40,560 (39%)	3,486 (3%)	47,661 (46%)	103,449 (100%)
1984-85	5,636 (7%)	42,875 (55%)	5,806 (8%)	23,094 (30%)	77,412 (100%)
1985-86	3,623 (7%)	12,659 (24%)	2,413 (5%)	34,846 (65%)	53,541 (100%)
1986-87	3,142 (5%)	9,705 (16%)	2,903 (5%)	45,316 <sup>a</sup> (74%)	61,067 (100%)
3 Year Average	4,133 (6%)	21,747 (34%)	3,707 (6%)	34,419 (54%)	64,006 (100%)

<sup>a</sup> Miscellaneous markets for sunflower seed include North Dakota destinations (38,130,860 bushels or 62%), Midland/Southwest States (957,561 bushels or 2%), West States (268,739 bushels or less than 1%), and all other miscellaneous destinations (5,959,096 bushels or 10%).

## SUNFLOWER SHIPMENTS 1977-78 to 1986-87



## SUNFLOWER SHIPMENTS BY MONTH, 1986-87

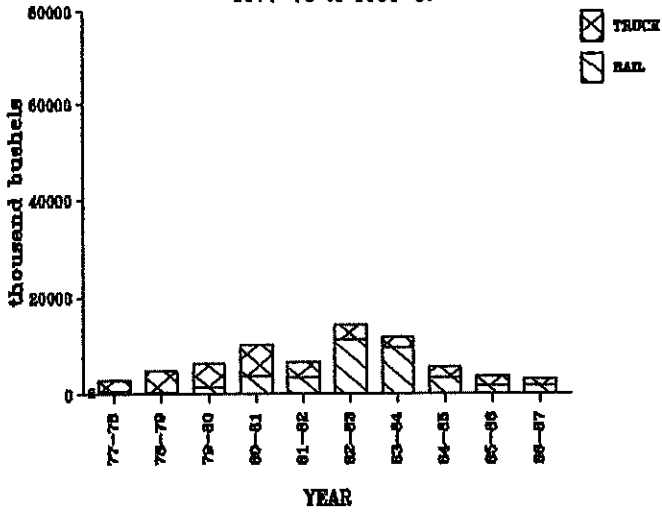




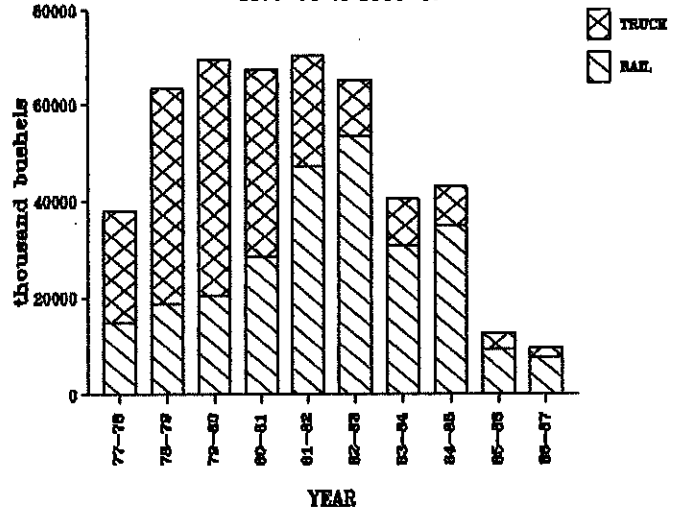
NORTH DAKOTA SUNFLOWER SEED SHIPMENTS BY RAIL AND TRUCK AND DESTINATION

YEAR	<u>MINNEAPOLIS-ST. PAUL</u>		<u>DULUTH-SUPERIOR</u>		<u>OTHER MINN.</u>		<u>MISC. MARKETS</u>		<u>TOTAL</u>	
	Rail	Truck	Rail	Truck	Rail	Truck	Rail	Truck	Rail	Truck
	(thousand bu.)									
1976-77	700 (81%)	163 (19%)	5,598 (64%)	3,095 (36%)	256 (19%)	1,114 (81%)	1,966 (42%)	2,730 (58%)	8,520 (55%)	7,102 (45%)
1977-78	770 (26%)	2,223 (74%)	14,820 (39%)	23,199 (61%)	367 (11%)	2,853 (89%)	2,614 (37%)	4,433 (63%)	18,571 (36%)	32,708 (64%)
1978-79	489 (10%)	4,301 (90%)	18,830 (30%)	44,348 (70%)	465 (8%)	5,143 (92%)	1,708 (30%)	3,969 (70%)	21,492 (27%)	57,761 (73%)
1979-80	1,395 (23%)	4,759 (77%)	20,419 (29%)	49,003 (71%)	144 (2%)	8,070 (98%)	5,329 (44%)	6,822 (56%)	27,287 (28%)	68,654 (72%)
1980-81	3,621 (36%)	6,545 (64%)	28,607 (43%)	38,670 (57%)	357 (4%)	8,041 (96%)	13,859 (45%)	15,859 (55%)	45,750 (40%)	69,116 (60%)
1981-82	3,563 (53%)	3,101 (47%)	47,223 (67%)	23,168 (33%)	389 (11%)	3,090 (89%)	14,278 (46%)	16,684 (54%)	65,453 (59%)	46,043 (41%)
1982-83	11,367 (79%)	3,007 (21%)	53,207 (82%)	11,641 (18%)	6,241 (67%)	3,041 (33%)	9,286 (28%)	23,954 (72%)	80,101 (66%)	41,643 (34%)
1983-84	9,650 (82%)	2,090 (18%)	30,672 (76%)	9,888 (24%)	2,049 (59%)	1,437 (41%)	23,336 (49%)	24,325 (51%)	65,708 (64%)	37,742 (36%)
1984-85	3,617 (64%)	2,019 (36%)	34,912 (81%)	7,963 (19%)	4,080 (70%)	1,726 (30%)	6,009 (26%)	17,085 (74%)	48,618 (63%)	28,793 (37%)
1985-86	1,690 (47%)	1,932 (53%)	9,286 (73%)	3,373 (27%)	1,445 (60%)	968 (40%)	10,189 (29%)	24,657 (71%)	22,610 (42%)	30,931 (58%)
1986-87	1,925 (61%)	1,217 (39%)	7,521 (77%)	2,185 (23%)	1,430 (49%)	1,473 (51%)	8,226 (18%)	37,090 (82%)	19,101 (31%)	41,965 (69%)
3 Year Average	2,411 (58%)	1,723 (42%)	17,240 (79%)	4,507 (21%)	2,318 (63%)	1,389 (37%)	8,141 (24%)	26,277 (76%)	30,110 (47%)	33,896 (53%)

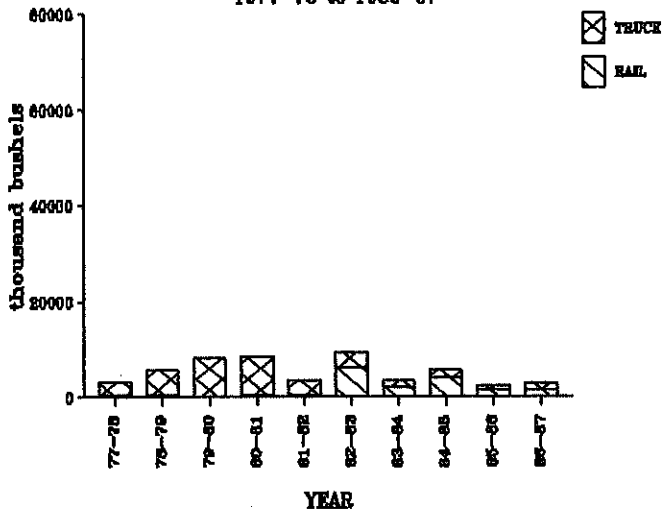
**SUNFLOWER TO MPLS**  
1977-78 to 1986-87



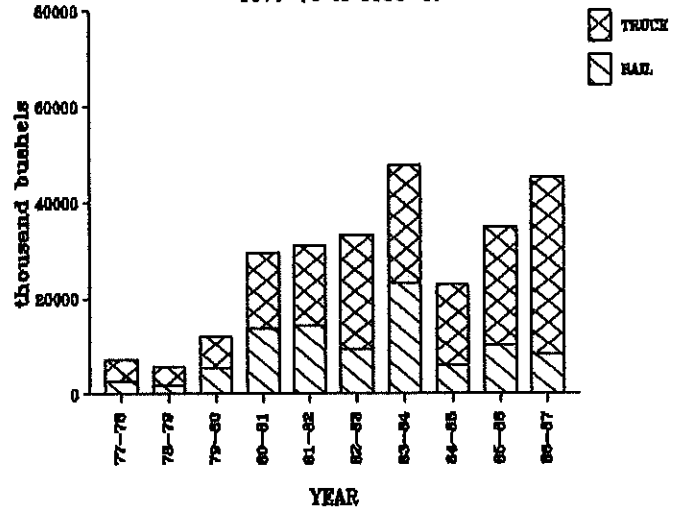
**SUNFLOWER TO D/S**  
1977-78 to 1986-87



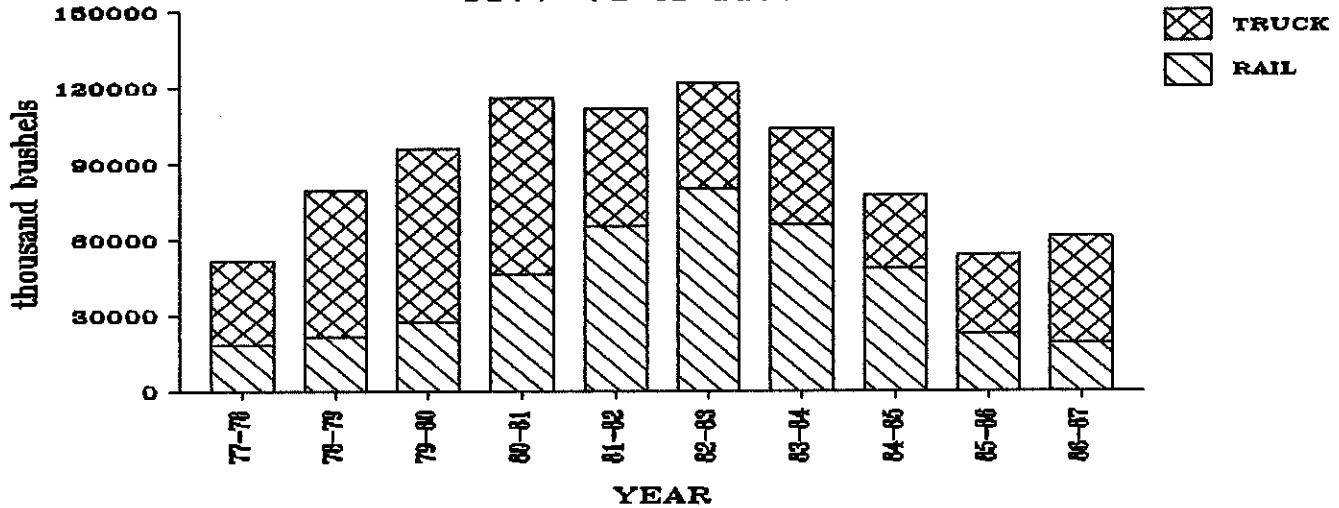
**SUNFLOWER TO OTHER MINN**  
1977-78 to 1986-87



**SUNFLOWER TO MISC**  
1977-78 to 1986-87



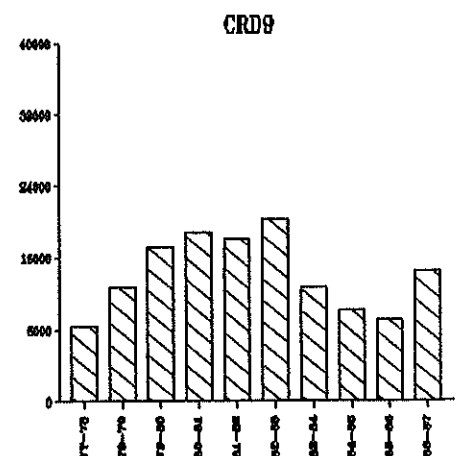
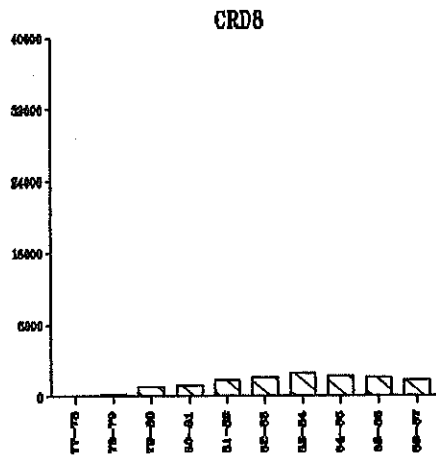
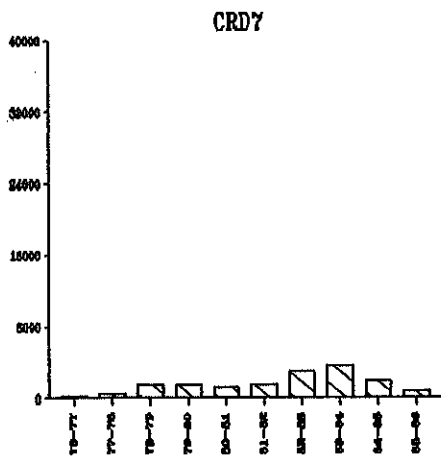
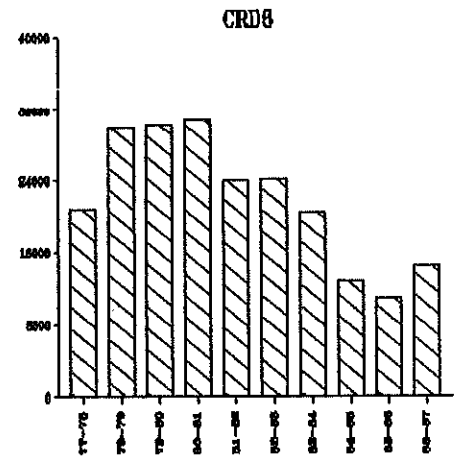
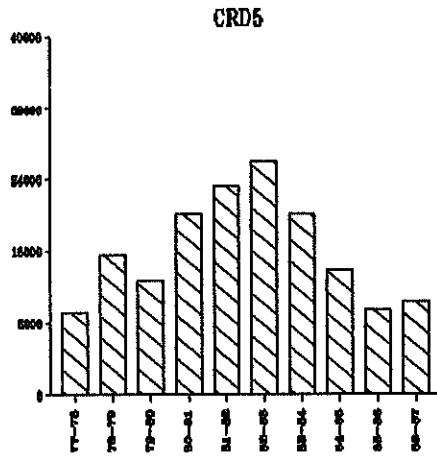
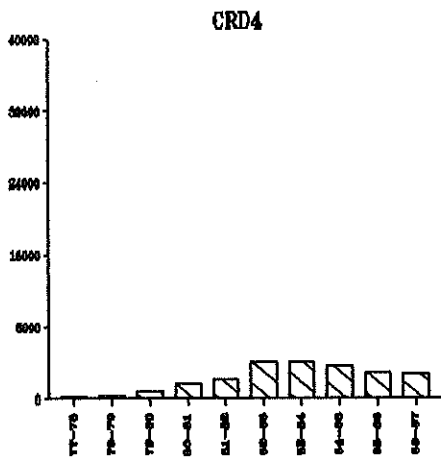
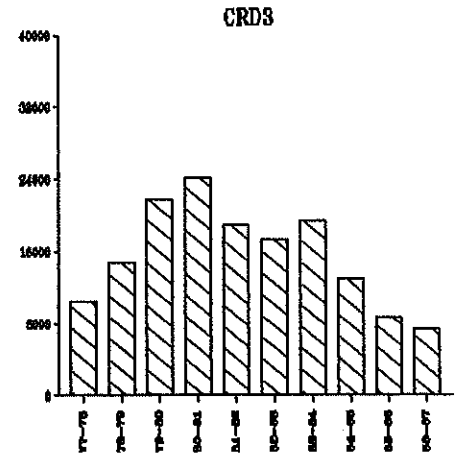
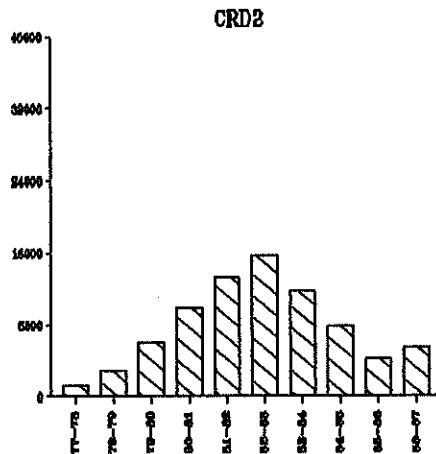
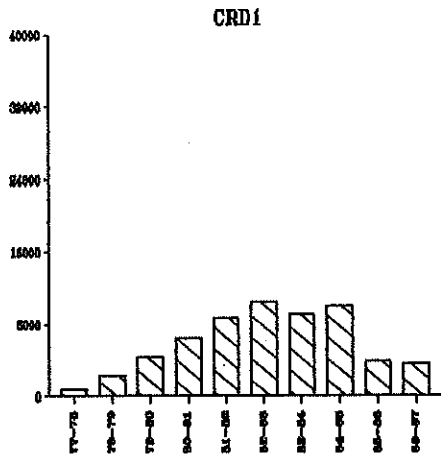
**ALL SUNFLOWER SHIPMENTS**  
1977-78 to 1986-87



NORTH DAKOTA SUNFLOWER SEED SHIPMENTS  
BY CROP REPORTING DISTRICT ORIGIN

YEAR	Crop Reporting District									TOTAL
	1	2	3	4	5	6	7	8	9	
	(thousand bu.)									
1976-77	7 (0%)	26 (0%)	2,184 (14%)	20 (0%)	1,788 (11%)	7,861 (50%)	25 (0%)	0 (0%)	3,711 (24%)	15,622 (100%)
1977-78	771 (2%)	1,267 (2%)	10,469 (20%)	179 (0%)	9,087 (18%)	20,710 (40%)	225 (0%)	129 (0%)	8,442 (16%)	51,279 (100%)
1978-79	2,233 (3%)	2,839 (4%)	14,803 (19%)	336 (0%)	15,560 (20%)	30,050 (38%)	485 (1%)	225 (0%)	12,722 (16%)	79,253 (100%)
1979-80	4,317 (5%)	6,101 (6%)	21,814 (23%)	819 (1%)	12,706 (13%)	30,333 (32%)	1,550 (2%)	1,045 (1%)	17,254 (18%)	95,939 (100%)
1980-81	6,422 (6%)	9,970 (9%)	24,165 (21%)	1,668 (1%)	20,114 (18%)	30,871 (27%)	1,528 (1%)	1,256 (1%)	18,872 (16%)	114,866 (100%)
1981-82	8,702 (8%)	13,245 (12%)	18,996 (17%)	2,106 (2%)	23,244 (21%)	24,067 (22%)	1,219 (1%)	1,831 (2%)	18,086 (16%)	111,496 (100%)
1982-83	10,434 (9%)	15,728 (13%)	17,391 (14%)	4,084 (3%)	25,906 (21%)	24,230 (20%)	1,510 (1%)	2,206 (2%)	20,253 (17%)	121,744 (100%)
1983-84	9,188 (9%)	11,780 (11%)	19,429 (19%)	4,037 (4%)	20,200 (20%)	20,522 (20%)	3,023 (3%)	2,604 (3%)	12,666 (12%)	103,449 (100%)
1984-85	10,002 (13%)	7,761 (10%)	13,053 (17%)	3,701 (5%)	13,962 (18%)	12,943 (17%)	3,573 (5%)	2,277 (3%)	10,140 (13%)	77,412 (100%)
1985-86	3,899 (7%)	4,208 (8%)	8,722 (16%)	2,894 (5%)	9,382 (18%)	10,994 (21%)	2,077 (4%)	2,153 (4%)	9,211 (17%)	53,541 (100%)
1986-87	3,582 (6%)	5,414 (9%)	7,336 (12%)	2,753 (5%)	10,284 (17%)	14,437 (24%)	830 (1%)	1,875 (3%)	14,556 (24%)	61,067 (100%)
3 Year Average	5,828 (9%)	5,794 (9%)	9,704 (15%)	3,116 (5%)	11,209 (18%)	12,775 (20%)	2,160 (3%)	2,102 (3%)	11,302 (18%)	63,990 (100%)

SUNFLOWER SHIPMENTS BY CROP REPORTING DISTRICT  
(thousand bushels)



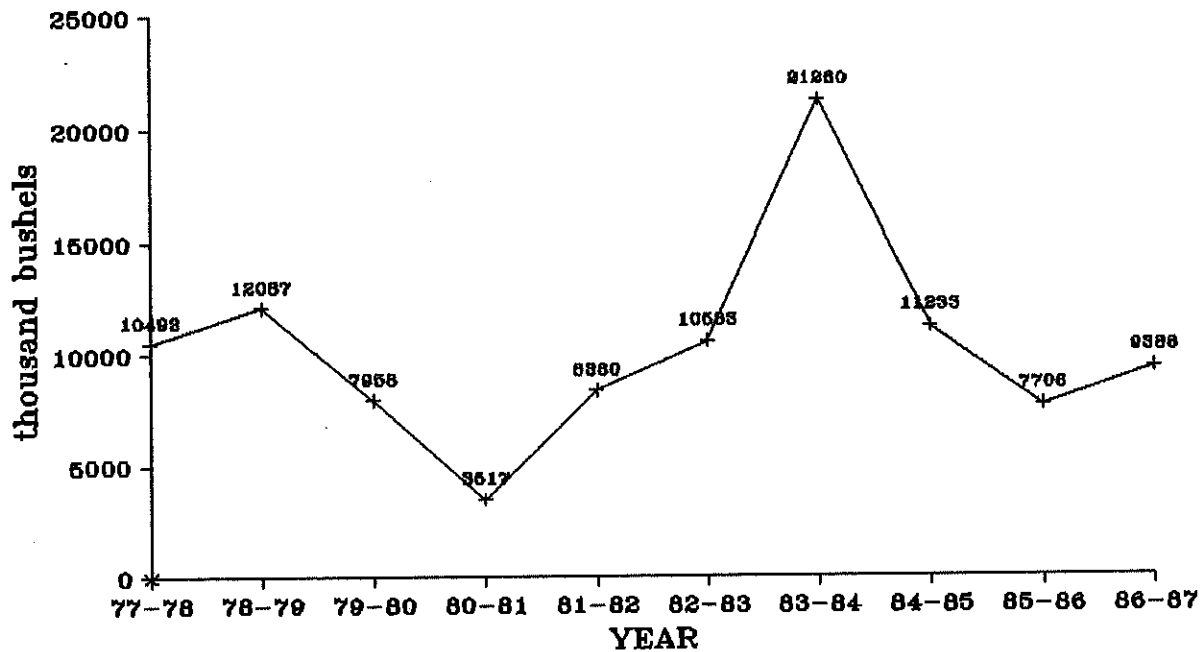
# OATS

NORTH DAKOTA OATS SHIPMENTS  
BY DESTINATION

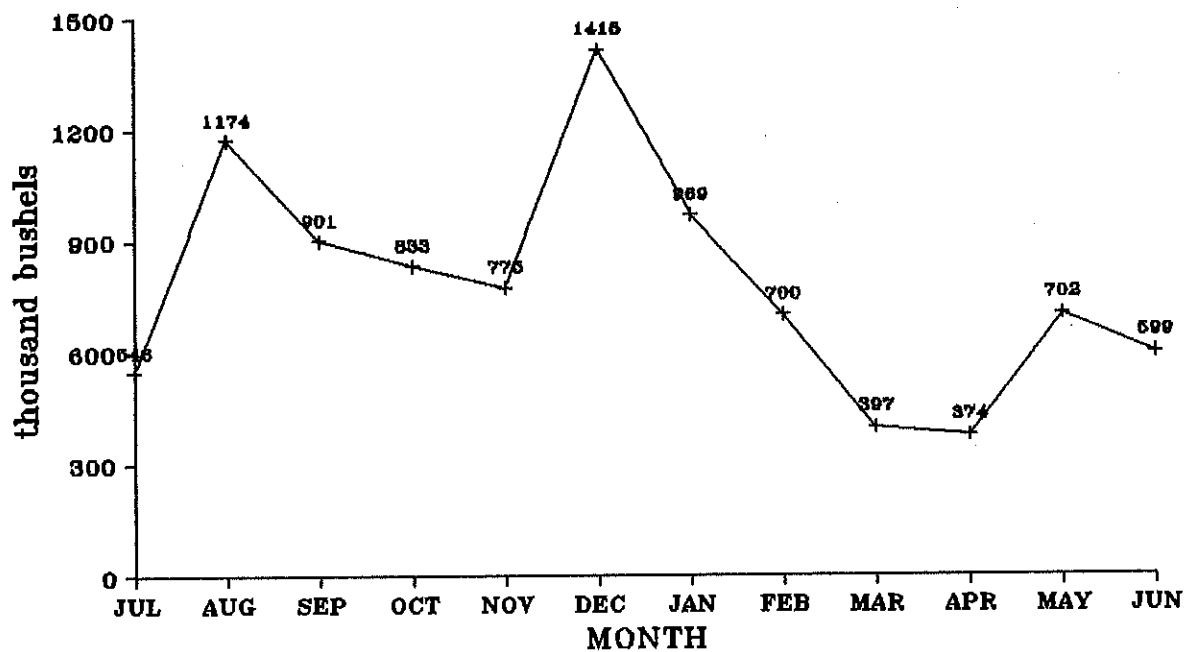
YEAR	MINNEAPOLIS-ST. PAUL	DULUTH-SUPERIOR	WEST	MISC. MARKETS	TOTAL
	(thousand bu.)				
1976-77	6,769 (56%)	1,932 (16%)	1,427 (12%)	2,031 (17%)	12,159 (100%)
1977-78	5,860 (56%)	2,385 (23%)	851 (8%)	1,396 (13%)	10,492 (100%)
1978-79	6,969 (58%)	2,078 (17%)	1,200 (10%)	1,839 (15%)	12,086 (100%)
1979-80	4,298 (54%)	346 (4%)	1,580 (20%)	1,735 (22%)	7,959 (100%)
1980-81	1,269 (36%)	299 (8%)	936 (27%)	1,011 (29%)	3,515 (100%)
1981-82	5,491 (65%)	722 (9%)	630 (8%)	1,536 (18%)	8,379 (100%)
1982-83	7,045 (67%)	410 (4%)	675 (6%)	2,453 (23%)	10,583 (100%)
1983-84	14,984 (70%)	588 (3%)	400 (2%)	5,289 (25%)	21,261 (100%)
1984-85	6,467 (58%)	166 (1%)	437 (4%)	4,163 (37%)	11,233 (100%)
1985-86	4,029 (52%)	115 (1%)	431 (6%)	3,131 (41%)	7,706 (100%)
1986-87	4,690 (50%)	74 (1%)	193 (2%)	4,430 <sup>a</sup> (47%)	9,387 (100%)
3 Year Average	5,062 (54%)	118 (1%)	354 (4%)	3,908 (41%)	9,442 (100%)

<sup>a</sup> Miscellaneous markets for oats include Midland/Southwest States (2,007,670 bushels or 21%), Other Minnesota/Wisconsin (1,463,392 bushels or 16%), North Dakota destinations (568,047 bushels or 6%), and all other miscellaneous destinations (391,126 bushels or 4%).

## ALL OATS SHIPMENTS 1977-78 to 1986-87



## OATS SHIPMENTS BY MONTH, 1986-87

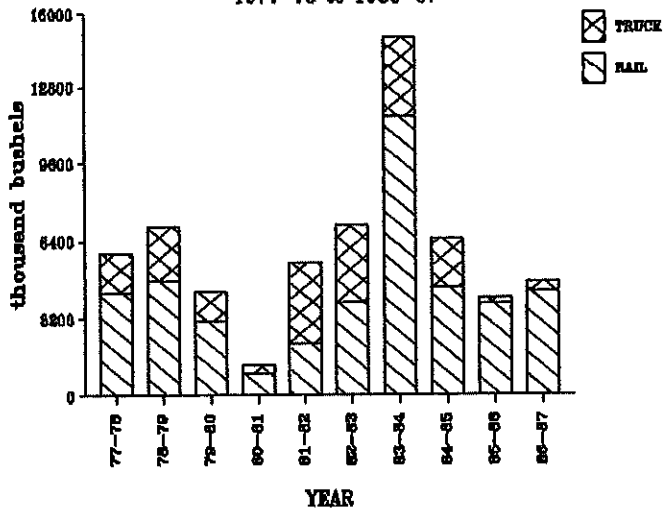


NORTH DAKOTA OATS SHIPMENTS BY RAIL AND TRUCK AND DESTINATION

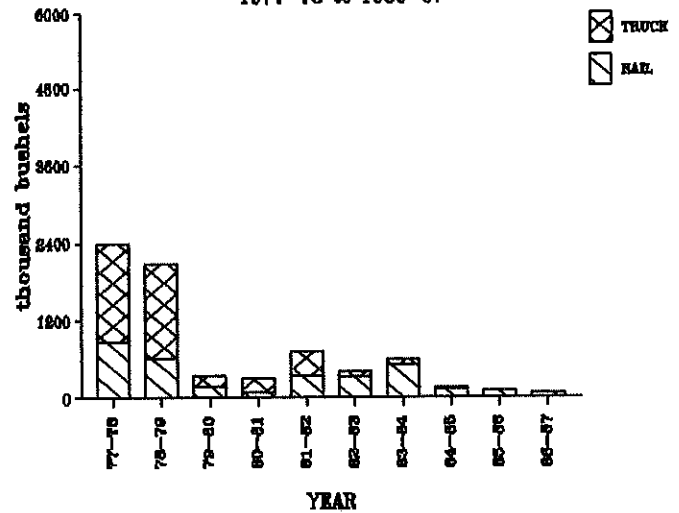
YEAR	<u>MINNEAPOLIS-ST. PAUL</u>		<u>DULUTH-SUPERIOR</u>		<u>WEST</u>		<u>MISC. MARKETS</u>		<u>TOTAL</u>	
	Rail	Truck	Rail	Truck	Rail	Truck	Rail	Truck	Rail	Truck
	(thousand bu.)									
1976-77	4,602 (68%)	2,166 (32%)	761 (39%)	1,171 (61%)	121 (8%)	1,306 (92%)	231 (11%)	1,800 (89%)	5,715 (47%)	6,443 (53%)
1977-78	4,244 (72%)	1,616 (28%)	869 (36%)	1,516 (64%)	12 (1%)	839 (99%)	255 (18%)	1,142 (82%)	5,380 (51%)	5,113 (49%)
1978-79	4,767 (68%)	2,202 (32%)	623 (30%)	1,455 (70%)	185 (16%)	1,016 (84%)	252 (14%)	1,587 (86%)	5,827 (48%)	6,260 (52%)
1979-80	3,077 (72%)	1,220 (28%)	184 (53%)	162 (47%)	91 (5%)	1,489 (95%)	338 (19%)	1,397 (81%)	3,690 (46%)	4,268 (54%)
1980-81	913 (72%)	356 (28%)	99 (33%)	200 (67%)	11 (1%)	925 (99%)	74 (7%)	939 (93%)	1,097 (31%)	2,418 (69%)
1981-82	2,167 (39%)	3,324 (61%)	349 (48%)	373 (52%)	35 (6%)	596 (94%)	285 (19%)	1,251 (81%)	2,835 (34%)	5,544 (66%)
1982-83	3,848 (55%)	3,197 (45%)	319 (78%)	91 (22%)	19 (3%)	656 (97%)	877 (38%)	1,576 (64%)	5,063 (48%)	5,520 (52%)
1983-84	11,547 (77%)	3,436 (23%)	503 (85%)	86 (15%)	99 (25%)	301 (75%)	2,645 (50%)	2,643 (50%)	14,794 (70%)	6,466 (30%)
1984-85	4,481 (69%)	1,986 (31%)	137 (83%)	29 (17%)	30 (7%)	407 (93%)	1,406 (34%)	2,757 (66%)	6,054 (51%)	5,179 (49%)
1985-86	3,796 (94%)	233 (6%)	109 (95%)	6 (5%)	190 (44%)	241 (56%)	1,237 (40%)	1,894 (60%)	5,333 (69%)	2,373 (31%)
1986-87	4,287 (91%)	403 (9%)	73 (98%)	1 (2%)	55 (28%)	139 (72%)	2,659 (60%)	1,771 (40%)	7,074 (75%)	2,313 (25%)
3 Year Average	4,188 (83%)	874 (17%)	106 (90%)	12 (10%)	92 (26%)	262 (74%)	1,767 (45%)	2,141 (55%)	6,153 (65%)	3,289 (35%)



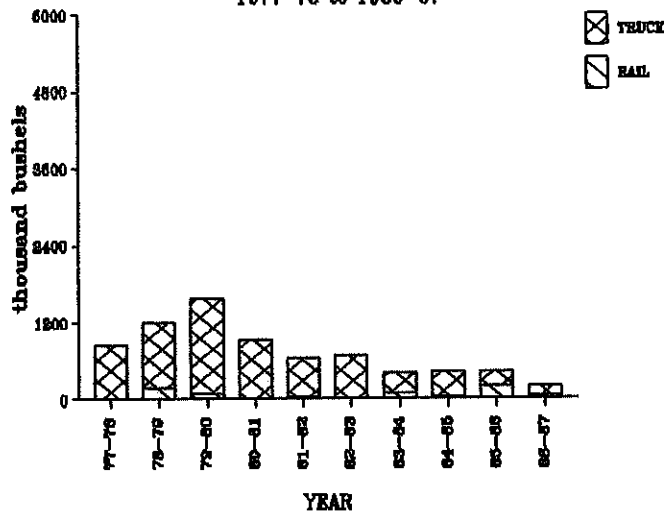
**OATS TO MPLS**  
1977-78 to 1986-87



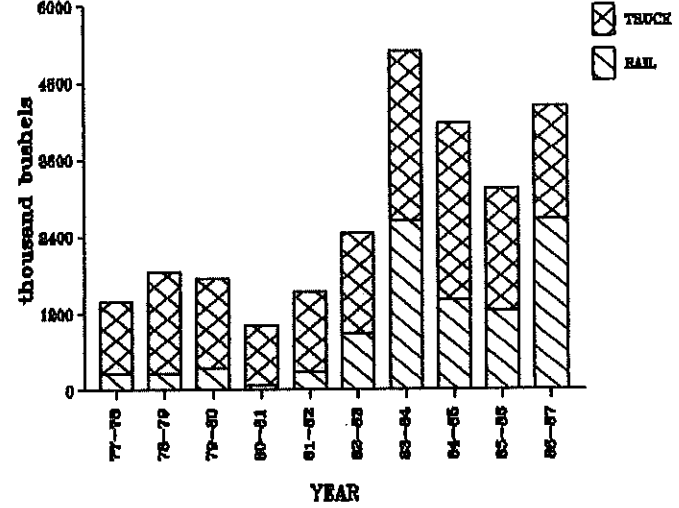
**OATS TO D/S**  
1977-78 to 1986-87



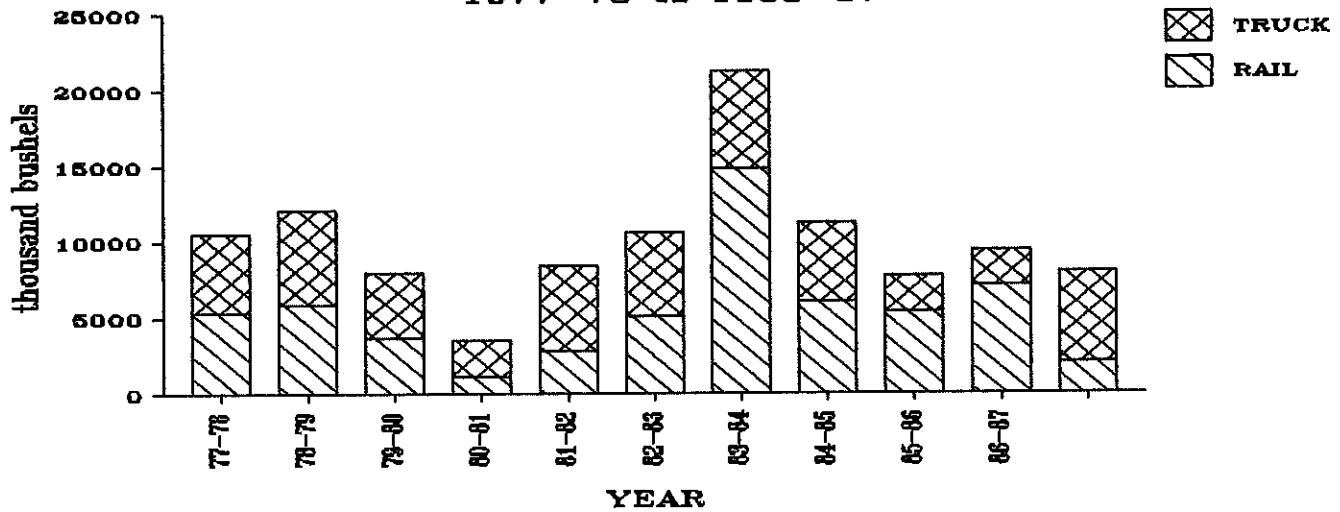
**OATS TO WEST**  
1977-78 to 1986-87



**OATS TO MISC**  
1977-78 to 1986-87



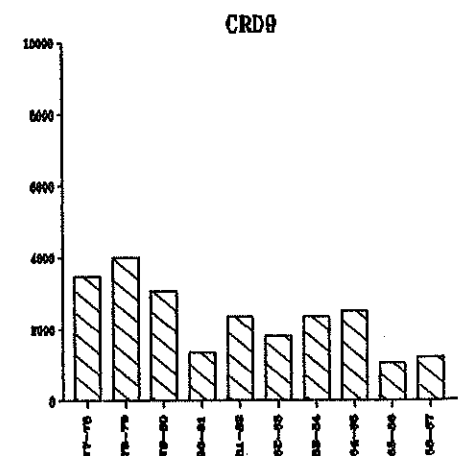
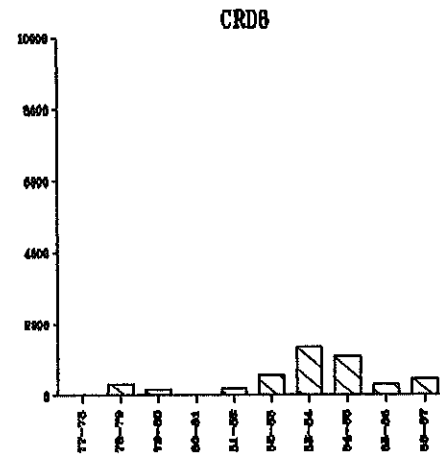
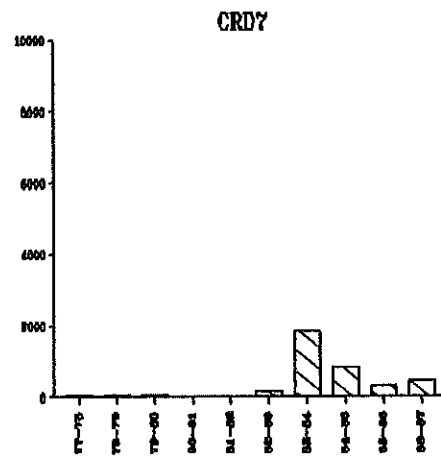
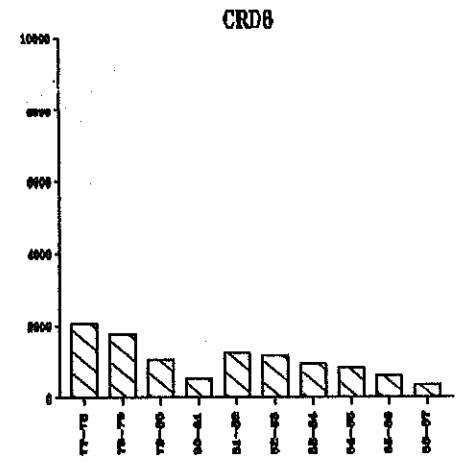
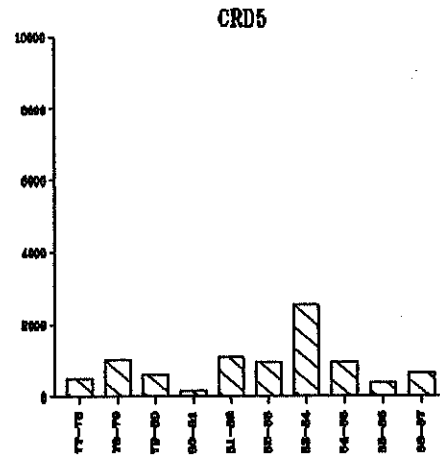
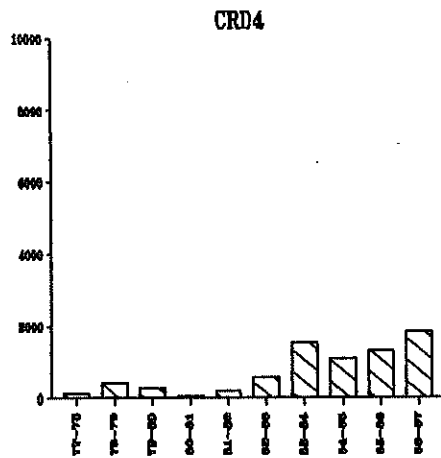
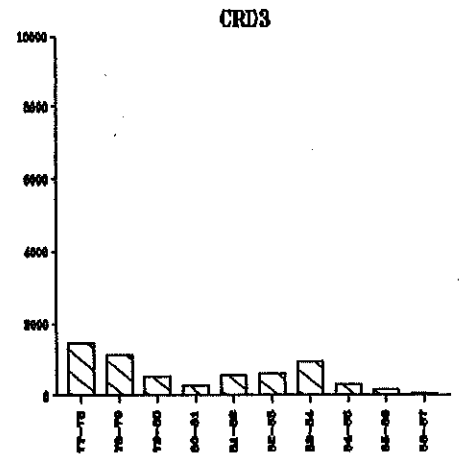
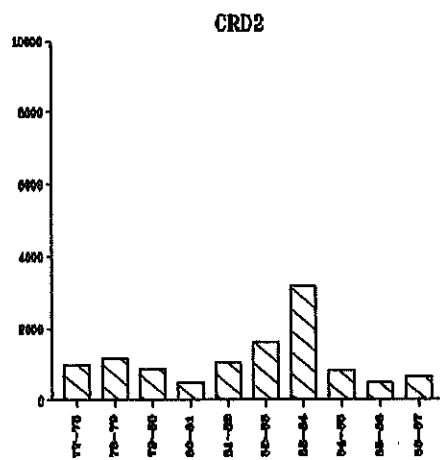
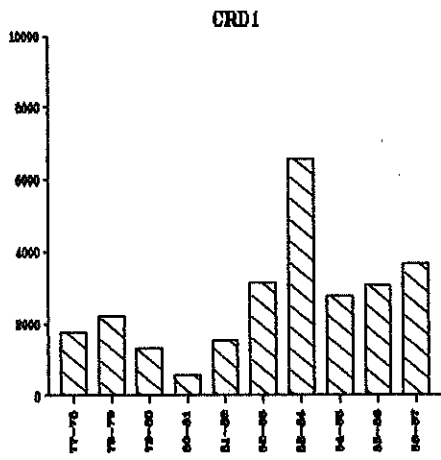
**ALL OATS SHIPMENTS**  
1977-78 to 1986-87



NORTH DAKOTA OATS SHIPMENTS  
BY CROP REPORTING DISTRICT ORIGIN

YEAR	Crop Reporting District									TOTAL
	1	2	3	4	5	6	7	8	9	
	(thousand bu.)									
1976-77	2,309 (17%)	2,081 (15%)	1,904 (20%)	436 (3%)	976 (11%)	1,733 (14%)	225 (2%)	226 (2%)	2,269 (17%)	12,159 (100%)
1977-78	1,769 (17%)	974 (9%)	1,485 (14%)	137 (1%)	507 (5%)	2,077 (20%)	47 (0%)	7 (0%)	3,490 (33%)	10,493 (100%)
1978-79	2,200 (18%)	1,184 (10%)	1,132 (9%)	425 (4%)	1,016 (8%)	1,760 (15%)	68 (1%)	301 (2%)	4,002 (33%)	12,086 (100%)
1979-80	1,305 (16%)	875 (11%)	544 (7%)	282 (4%)	619 (8%)	1,057 (13%)	38 (1%)	159 (2%)	3,079 (39%)	7,958 (100%)
1980-81	590 (17%)	502 (14%)	292 (8%)	42 (1%)	167 (5%)	558 (16%)	4 (0%)	8 (0%)	1,352 (38%)	3,515 (100%)
1981-82	1,556 (20%)	1,070 (13%)	579 (7%)	217 (3%)	1,106 (13%)	1,243 (15%)	19 (0%)	212 (2%)	2,377 (28%)	8,379 (100%)
1982-83	3,130 (30%)	1,614 (15%)	598 (6%)	573 (5%)	946 (9%)	1,176 (11%)	164 (2%)	578 (5%)	1,804 (17%)	10,583 (100%)
1983-84	6,562 (31%)	3,163 (15%)	952 (4%)	1,530 (7%)	2,561 (12%)	934 (4%)	1,834 (9%)	1,368 (6%)	2,356 (11%)	21,261 (100%)
1984-85	2,780 (24%)	828 (7%)	328 (3%)	1,085 (10%)	956 (9%)	824 (7%)	823 (7%)	1,101 (10%)	2,509 (21%)	11,234 (100%)
1985-86	3,078 (40%)	490 (6%)	150 (2%)	1,306 (17%)	404 (5%)	599 (8%)	301 (4%)	312 (4%)	1,065 (14%)	7,706 (100%)
1986-87	3,681 (39%)	656 (7%)	72 (1%)	1,858 (20%)	642 (7%)	354 (4%)	452 (5%)	463 (5%)	1,211 (13%)	9,387 (100%)
3 Year Average	3,180 (34%)	658 (7%)	183 (2%)	1,416 (15%)	667 (7%)	592 (6%)	555 (6%)	525 (7%)	1,595 (17%)	9,443 (100%)

OATS SHIPMENTS BY CROP REPORTING DISTRICT  
(thousand bushels)



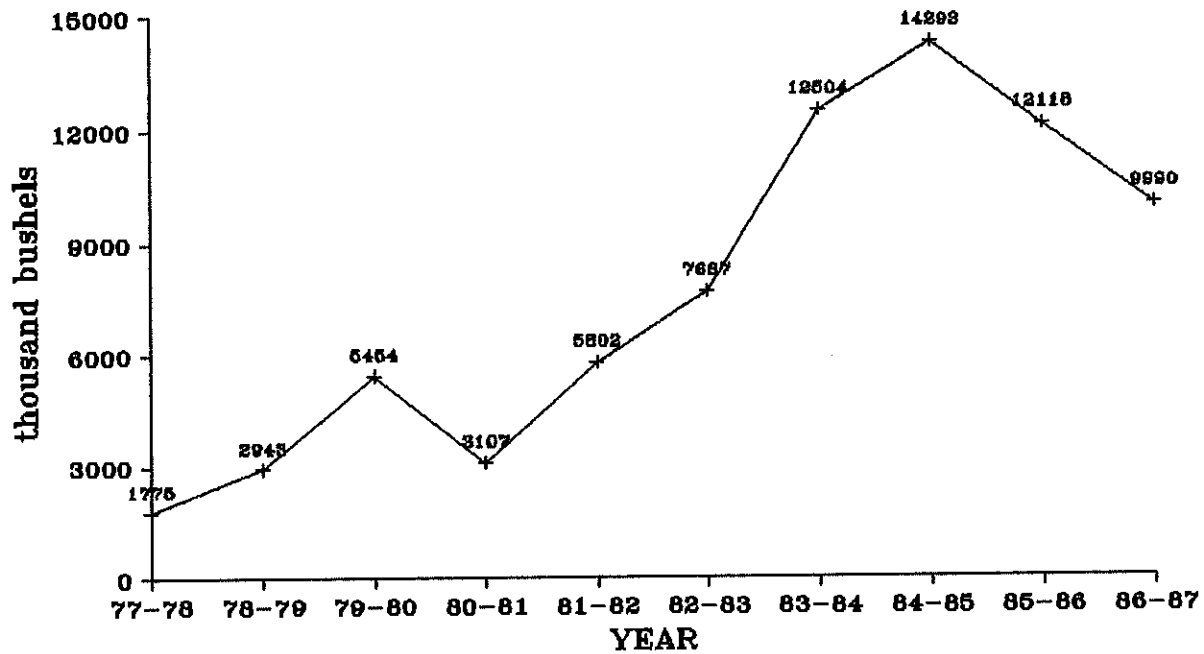
# SOYBEANS

NORTH DAKOTA SOYBEAN SHIPMENTS  
BY DESTINATION

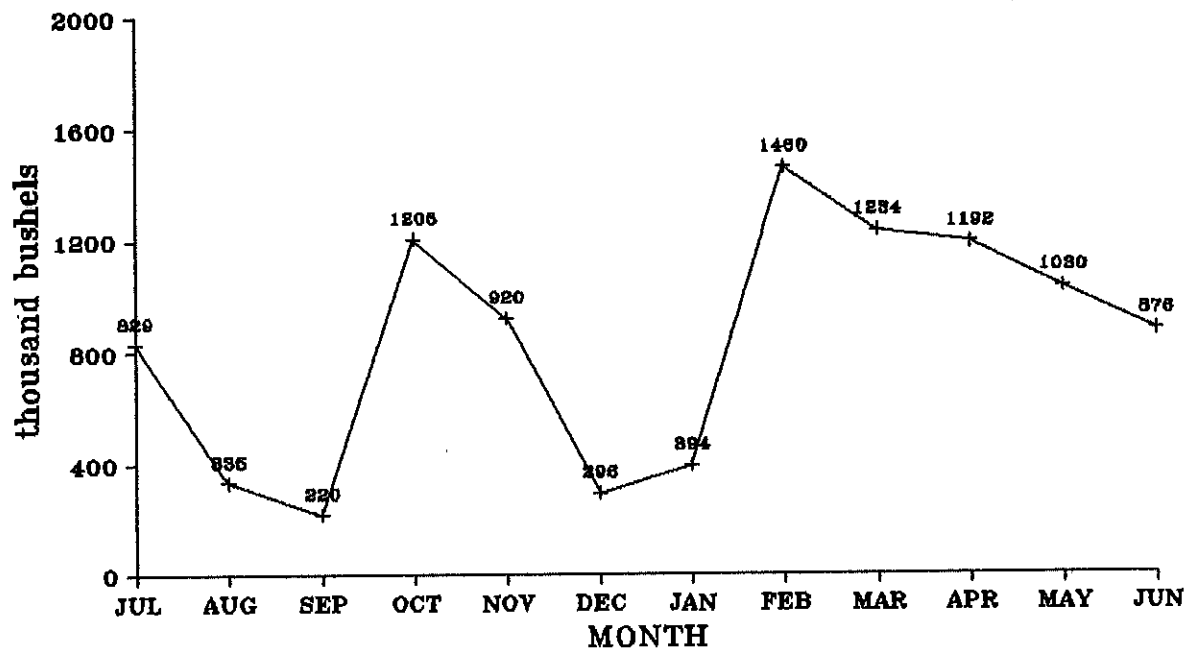
YEAR	MINNEAPOLIS-ST. PAUL	DULUTH-SUPERIOR	WEST	MISC. MARKETS	TOTAL
(thousand bu.)					
1976-77	389 (20%)	72 (4%)	21 (1%)	1,459 (75%)	1,941 (100%)
1977-78	367 (21%)	311 (18%)	29 (2%)	1,068 (60%)	1,776 (100%)
1978-79	1,020 (35%)	773 (26%)	10 (0%)	1,139 (39%)	2,943 (100%)
1979-80	3,469 (64%)	674 (12%)	20 (0%)	1,289 (24%)	5,452 (100%)
1980-81	1,762 (57%)	337 (11%)	22 (1%)	988 (32%)	3,109 (100%)
1981-82	3,758 (65%)	310 (5%)	317 (5%)	1,416 (24%)	5,801 (100%)
1982-83	5,639 (73%)	185 (2%)	952 (12%)	910 (12%)	7,687 (100%)
1983-84	7,625 (61%)	1,430 (11%)	2,418 (19%)	1,030 (8%)	12,504 (100%)
1984-85	4,361 (31%)	491 (3%)	6,825 (48%)	2,615 (18%)	14,292 (100%)
1985-86	5,739 (47%)	184 (2%)	3,631 (30%)	2,563 (21%)	12,116 (100%)
1986-87	4,933 (49%)	166 (2%)	2,144 (21%)	2,747 <sup>a</sup> (27%)	9,990 (100%)
3 Year Average	5,011 (41%)	280 (2%)	4,200 (35%)	2,642 (22%)	12,134 (100%)

<sup>a</sup> Miscellaneous markets for soybeans include North Dakota destinations (520,171 bushels or 5%), Midland/Southwest States (509,435 bushels or 5%), Other Minnesota/Wisconsin (505,126 bushels or 5%), and all other miscellaneous destinations (1,212,150 bushels or 12%).

## ALL SOYBEAN SHIPMENTS 1977-78 TO 1986-87



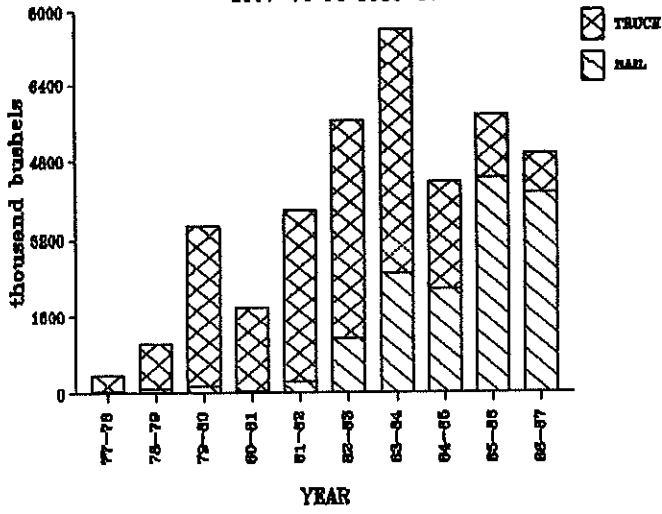
## SOYBEAN SHIPMENTS BY MONTH, 1986-87



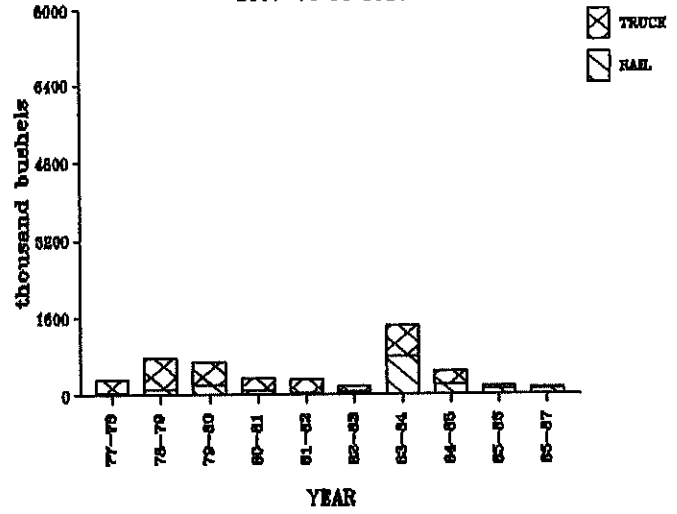
NORTH DAKOTA SOYBEAN SHIPMENTS BY RAIL AND TRUCK AND DESTINATION

YEAR	MINNEAPOLIS-ST. PAUL		DULUTH-SUPERIOR		WEST		MISC. MARKETS		TOTAL	
	Rail	Truck	Rail	Truck	Rail	Truck	Rail	Truck	Rail	Truck
(thousand bu.)										
1976-77	15 (4%)	373 (96%)	59 (83%)	12 (17%)	1 (4%)	20 (96%)	22 (1%)	1,438 (99%)	97 (5%)	1,844 (95%)
1977-78	28 (8%)	339 (92%)	35 (11%)	276 (89%)	3 (12%)	26 (88%)	10 (1%)	1,058 (99%)	77 (4%)	1,699 (96%)
1978-79	90 (9%)	930 (91%)	114 (15%)	659 (85%)	4 (35%)	7 (65%)	26 (2%)	1,113 (98%)	233 (8%)	2,709 (92%)
1979-80	147 (4%)	3,322 (96%)	196 (29%)	478 (71%)	10 (47%)	11 (53%)	5 (1%)	1,285 (99%)	357 (7%)	5,095 (93%)
1980-81	51 (3%)	1,711 (97%)	93 (28%)	244 (72%)	13 (61%)	8 (39%)	4 (1%)	983 (99%)	162 (5%)	2,947 (95%)
1981-82	243 (6%)	3,515 (94%)	38 (12%)	272 (88%)	229 (72%)	88 (28%)	43 (3%)	1,374 (97%)	553 (10%)	5,249 (90%)
1982-83	1,137 (20%)	4,502 (80%)	69 (37%)	117 (63%)	872 (92%)	80 (8%)	79 (9%)	831 (91%)	2,158 (28%)	5,529 (72%)
1983-84	2,482 (33%)	5,143 (67%)	804 (56%)	626 (44%)	2,370 (98%)	48 (2%)	368 (36%)	663 (64%)	6,023 (48%)	6,480 (52%)
1984-85	2,162 (50%)	2,199 (50%)	212 (43%)	279 (57%)	6,788 (99%)	37 (1%)	255 (10%)	2,361 (90%)	9,417 (66%)	4,876 (34%)
1985-86	4,434 (77%)	1,305 (23%)	112 (61%)	72 (39%)	3,532 (97%)	100 (3%)	175 (7%)	2,388 (93%)	8,252 (68%)	3,864 (32%)
1986-87	4,137 (84%)	797 (16%)	123 (74%)	42 (26%)	2,132 (99%)	12 (1%)	1,532 (56%)	1,215 (44%)	7,924 (79%)	2,066 (21%)
3 Year Average	3,578 (71%)	1,434 (29%)	149 (53%)	131 (47%)	4,151 (99%)	50 (1%)	654 (25%)	1,988 (75%)	8,531 (70%)	3,602 (30%)

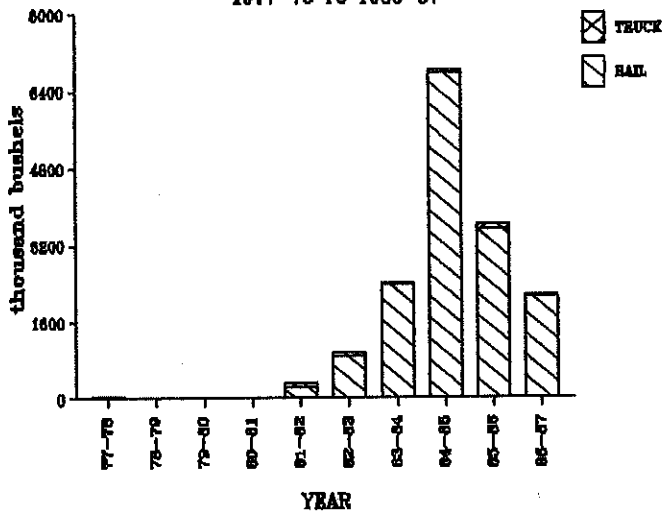
**SOYBEANS TO MPLS**  
1977-78 TO 1986-87



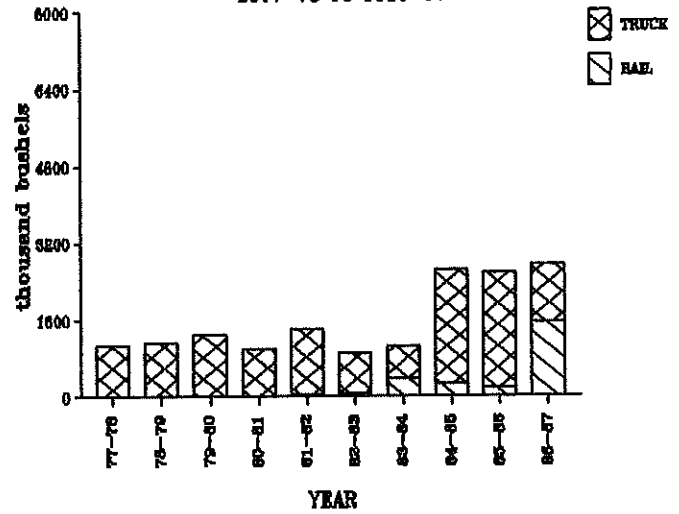
**SOYBEANS TO D/S**  
1977-78 TO 1986-87



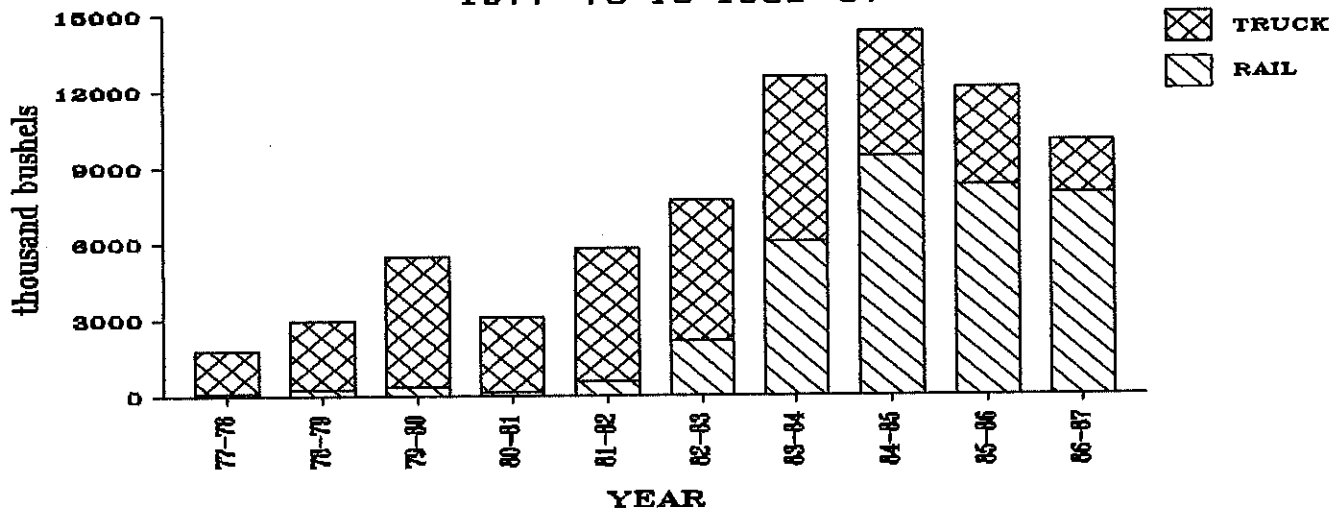
**SOYBEANS TO WEST**  
1977-78 TO 1986-87



**SOYBEANS TO MISC**  
1977-78 TO 1986-87



**ALL SOYBEAN SHIPMENTS**  
1977-78 TO 1986-87

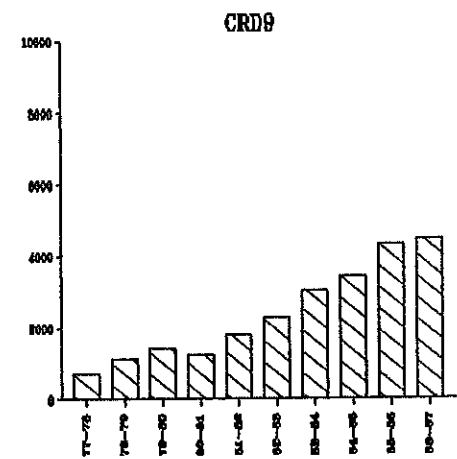
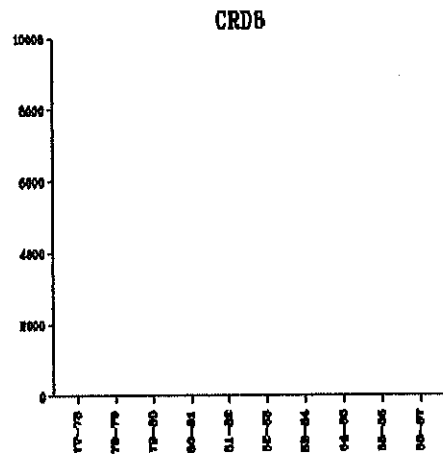
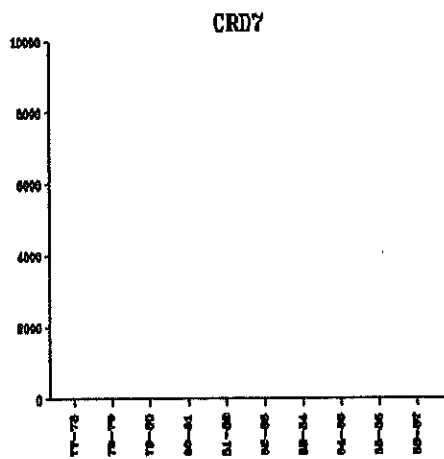
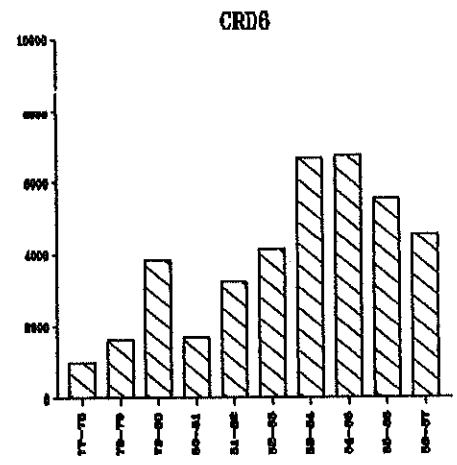
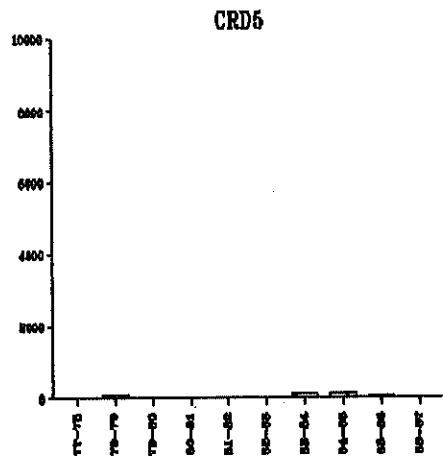
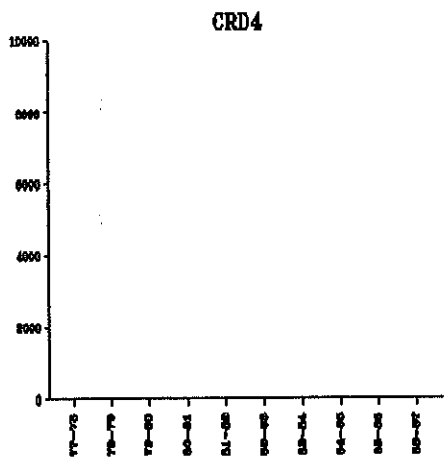
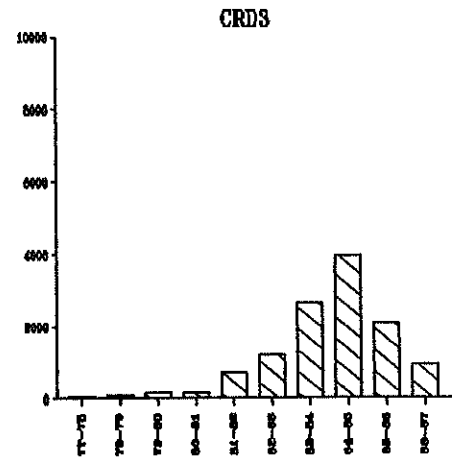
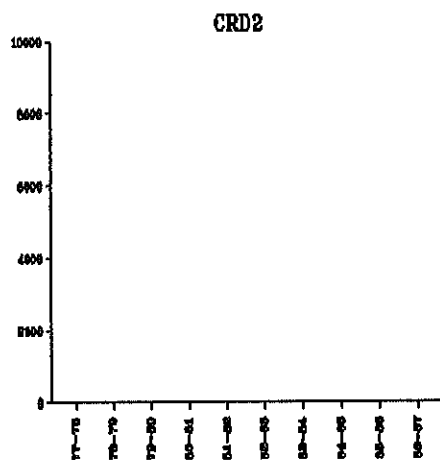
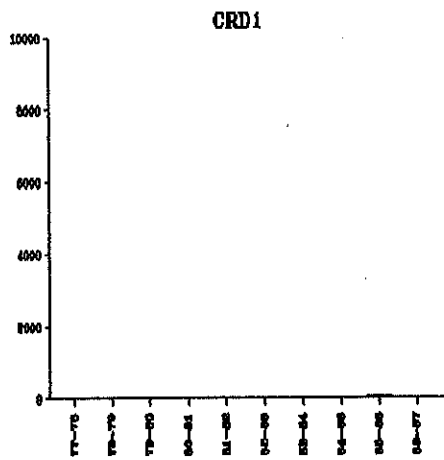




NORTH DAKOTA SOYBEAN SHIPMENTS  
BY CROP REPORTING DISTRICT ORIGIN

YEAR	Crop Reporting District									TOTAL
	1	2	3	4	5	6	7	8	9	
	(thousand bu.)									
1976-77	0 (0%)	0 (0%)	9 (1%)	0 (0%)	1 (0%)	1,093 (56%)	0 (0%)	0 (0%)	838 (43%)	1,941 (100%)
1977-78	0 (0%)	0 (0%)	39 (2%)	4 (0%)	0 (0%)	997 (36%)	0 (0%)	0 (0%)	736 (41%)	1,776 (100%)
1978-79	3 (0%)	0 (0%)	89 (3%)	3 (0%)	94 (3%)	1,608 (55%)	0 (0%)	0 (0%)	1,145 (39%)	2,943 (100%)
1979-80	11 (0%)	0 (0%)	155 (3%)	0 (0%)	8 (0%)	3,845 (71%)	0 (0%)	0 (0%)	1,434 (26%)	5,452 (100%)
1980-81	2 (0%)	0 (0%)	182 (6%)	0 (0%)	1 (0%)	1,678 (54%)	0 (0%)	0 (0%)	1,246 (40%)	3,109 (100%)
1981-82	0 (0%)	2 (0%)	722 (12%)	0 (0%)	37 (1%)	3,250 (56%)	0 (0%)	0 (0%)	1,790 (31%)	5,801 (100%)
1982-83	0 (0%)	3 (0%)	1,206 (16%)	0 (0%)	36 (1%)	4,164 (54%)	2 (0%)	0 (0%)	2,277 (30%)	7,687 (100%)
1983-84	2 (0%)	20 (0%)	2,665 (21%)	2 (0%)	112 (1%)	6,683 (53%)	4 (0%)	0 (0%)	3,016 (24%)	12,504 (100%)
1984-85	2 (0%)	2 (0%)	3,954 (28%)	5 (0%)	145 (1%)	6,736 (47%)	18 (0%)	7 (0%)	3,424 (24%)	14,292 (100%)
1985-86	43 (0%)	4 (0%)	2,114 (17%)	15 (0%)	44 (0%)	5,575 (46%)	0 (0%)	5 (0%)	4,317 (36%)	12,116 (100%)
1986-87	0 (0%)	9 (0%)	958 (10%)	0 (0%)	11 (0%)	4,540 (45%)	0 (0%)	3 (0%)	4,469 (45%)	9,990 (100%)
3 Year Average	15 (0%)	5 (0%)	2,342 (19%)	7 (0%)	67 (1%)	5,617 (46%)	6 (0%)	5 (0%)	4,070 (34%)	12,133 (100%)

SOYBEANS SHIPMENTS BY CROP REPORTING DISTRICT  
(thousand bushels)



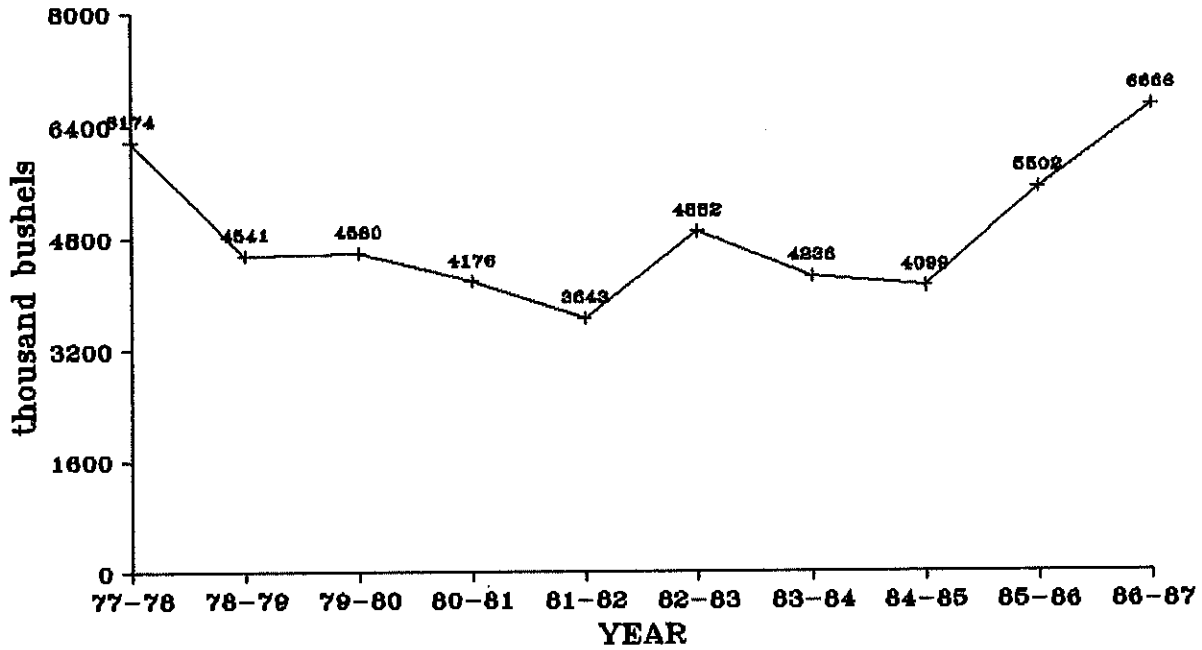
# **FLAXSEED**

NORTH DAKOTA FLAXSEED SHIPMENTS BY DESTINATION

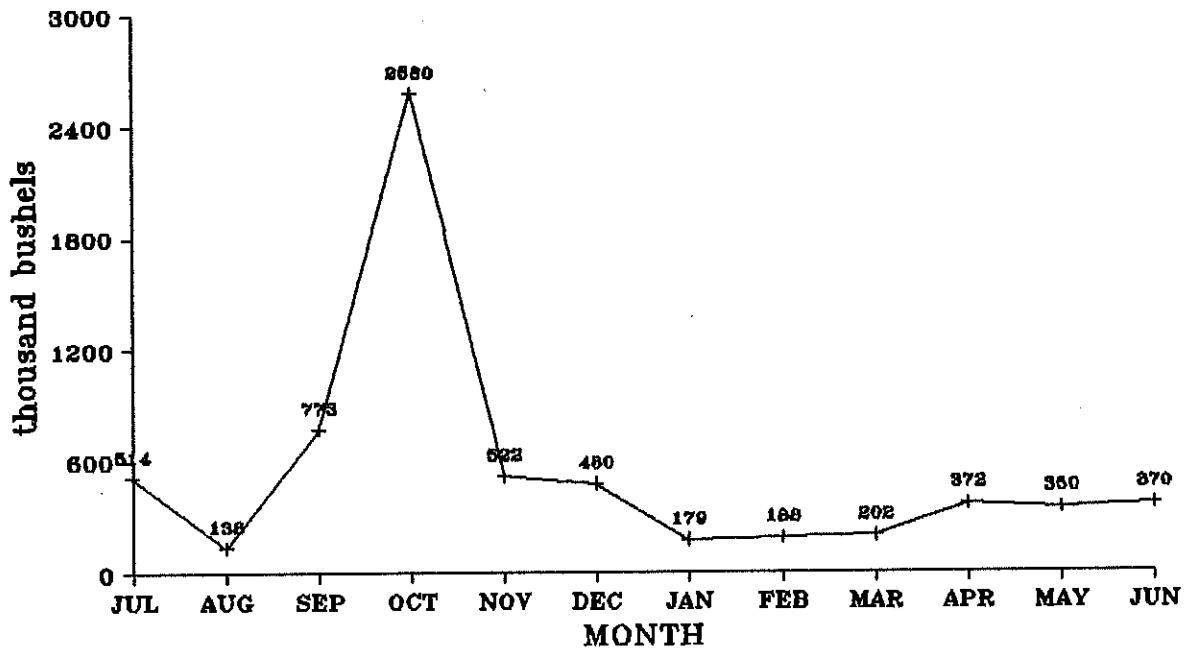
YEAR	MINNEAPOLIS-ST. PAUL	DULUTH-SUPERIOR	WEST	MISC. MARKETS	TOTAL
	(thousand bu.)				
1976-77	4,260 (87%)	284 (6%)	59 (1%)	279 (6%)	4,882 (100%)
1977-78	4,941 (80%)	748 (12%)	72 (1%)	413 (7%)	6,174 (100%)
1978-79	4,054 (89%)	153 (3%)	21 (1%)	313 (7%)	4,541 (100%)
1979-80	4,114 (90%)	195 (4%)	10 (1%)	263 (6%)	4,582 (100%)
1980-81	3,874 (98%)	89 (2%)	14 (1%)	199 (5%)	4,176 (100%)
1981-82	3,207 (88%)	118 (3%)	4 (0%)	314 (8%)	3,644 (100%)
1982-83	1,820 (37%)	497 (10%)	8 (0%)	2,558 (52%)	4,883 (100%)
1983-84	1,598 (38%)	85 (2%)	52 (1%)	2,501 (59%)	4,235 (100%)
1984-85	1,555 (38%)	166 (4%)	121 (3%)	2,256 (55%)	4,098 (100%)
1985-86	2,171 (39%)	30 (0%)	6 (0%)	3,296 (60%)	5,503 (100%)
1986-87	1,055 (16%)	381 (6%)	19 (0%)	5,211 <sup>a</sup> (78%)	6,666 (100%)
3 Year Average	1,594 (29%)	192 (4%)	49 (1%)	3,588 (66%)	5,422 (100%)

<sup>a</sup> Miscellaneous markets for flaxseed include North Dakota destinations (2,495,322 bushels or 37%), Other Minnesota/Wisconsin (1,828,729 bushels or 27%), Midland/Southwest States (472,302 bushels or 7%), and all other miscellaneous destinations (414,919 bushels or 7%).

## FLAX SHIPMENTS 1977-78 to 1986-87



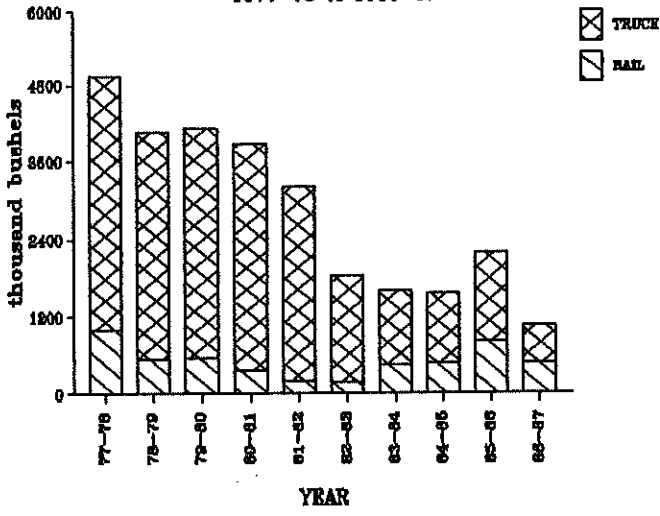
## FLAX SHIPMENTS BY MONTH, 1986-87



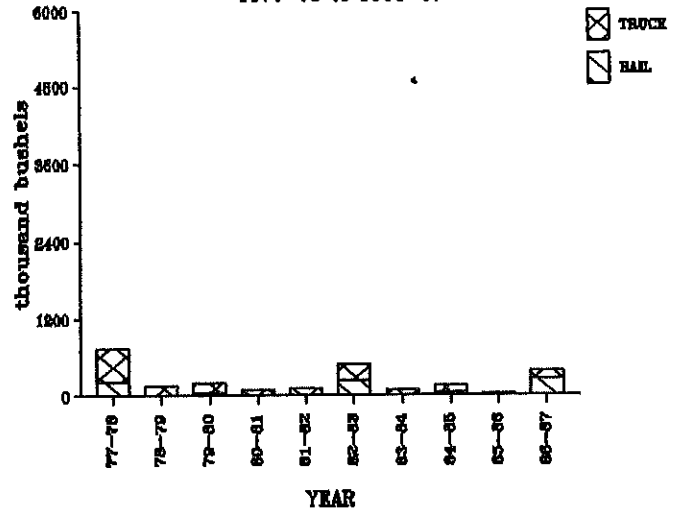
NORTH DAKOTA FLAXSEED SHIPMENTS BY RAIL AND TRUCK AND DESTINATION

YEAR	MINNEAPOLIS-ST. PAUL		DULUTH-SUPERIOR		WEST		MISC. MARKETS		TOTAL	
	Rail	Truck	Rail	Truck	Rail	Truck	Rail	Truck	Rail	Truck
(thousand bu.)										
1976-77	1,046 (25%)	3,214 (75%)	102 (36%)	183 (64%)	0 (0%)	59 (100%)	206 (74%)	74 (26%)	1,354 (28%)	3,530 (72%)
1977-78	987 (20%)	3,954 (80%)	226 (30%)	522 (70%)	0 (0%)	72 (100%)	74 (18%)	339 (82%)	1,287 (21%)	4,887 (79%)
1978-79	541 (13%)	3,513 (87%)	18 (12%)	135 (88%)	2 (10%)	19 (90%)	32 (10%)	281 (90%)	593 (15%)	3,948 (85%)
1979-80	555 (13%)	3,558 (87%)	53 (27%)	141 (73%)	0 (0%)	10 (100%)	45 (17%)	218 (83%)	653 (14%)	3,927 (86%)
1980-81	358 (9%)	3,516 (91%)	7 (8%)	82 (92%)	0 (0%)	14 (100%)	100 (50%)	99 (50%)	465 (11%)	3,711 (89%)
1981-82	203 (6%)	3,004 (94%)	10 (9%)	108 (91%)	0 (0%)	4 (100%)	15 (5%)	299 (95%)	228 (6%)	3,415 (94%)
1982-83	184 (10%)	1,635 (90%)	240 (48%)	257 (52%)	0 (0%)	8 (100%)	325 (13%)	2,233 (87%)	749 (15%)	4,134 (92%)
1983-84	455 (29%)	1,143 (71%)	5 (6%)	80 (94%)	13 (25%)	39 (75%)	311 (12%)	2,190 (88%)	785 (19%)	3,451 (81%)
1984-85	480 (31%)	1,075 (69%)	51 (31%)	114 (69%)	95 (78%)	27 (22%)	370 (16%)	1,887 (84%)	996 (24%)	3,103 (76%)
1985-86	813 (37%)	1,358 (63%)	15 (50%)	15 (50%)	0 (0%)	6 (100%)	939 (29%)	2,356 (71%)	1,768 (32%)	3,736 (68%)
1986-87	478 (45%)	577 (55%)	253 (66%)	128 (34%)	0 (0%)	19 (100%)	2,165 (42%)	3,046 (58%)	2,897 (43%)	3,769 (57%)
3 Year Average	590 (37%)	1,003 (63%)	106 (55%)	86 (45%)	32 (65%)	17 (35%)	1,158 (32%)	2,430 (68%)	1,886 (35%)	3,536 (65%)

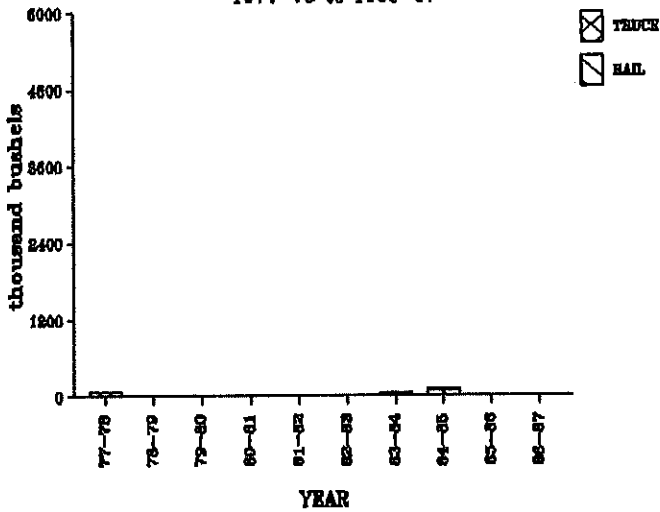
**FLAX TO MPLS**  
1977-78 to 1986-87



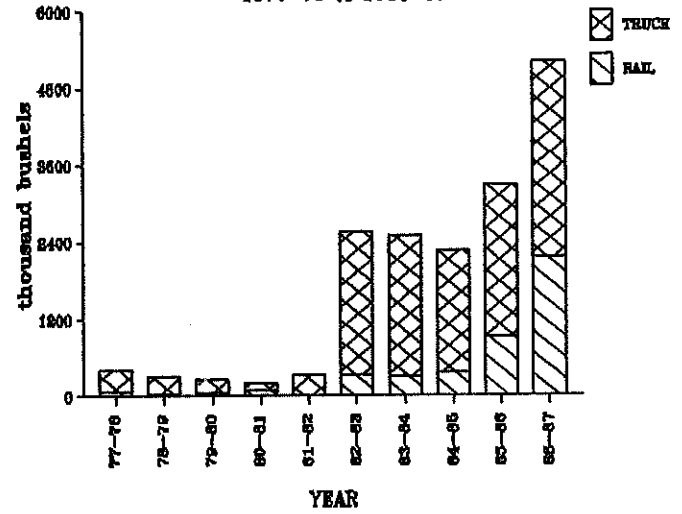
**FLAX TO D/S**  
1977-78 to 1986-87



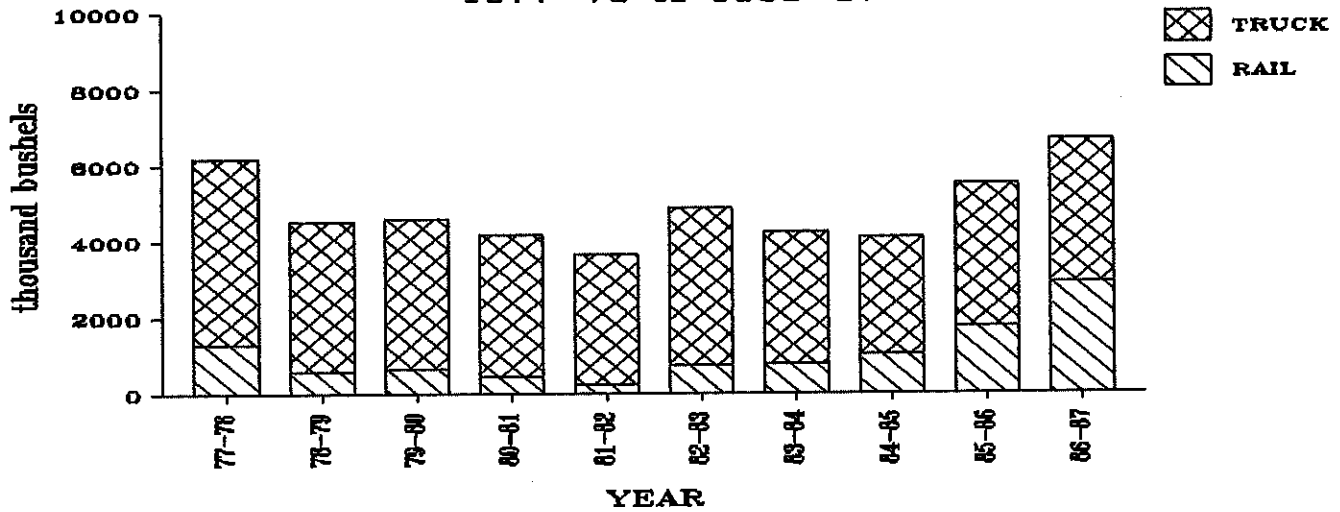
**FLAX TO WEST**  
1977-78 to 1986-87



**FLAX TO MISC**  
1977-78 to 1986-87



**ALL FLAX SHIPMENTS**  
1977-78 to 1986-87

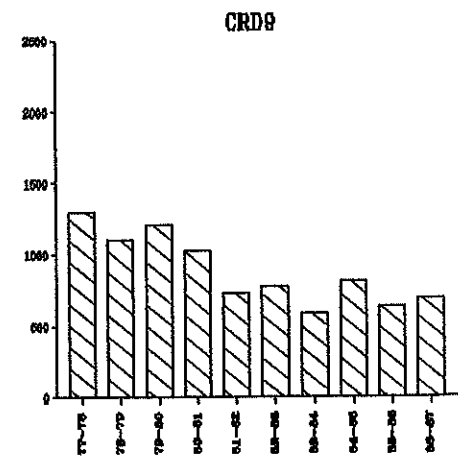
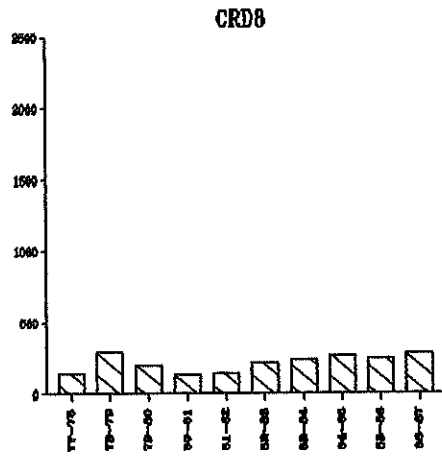
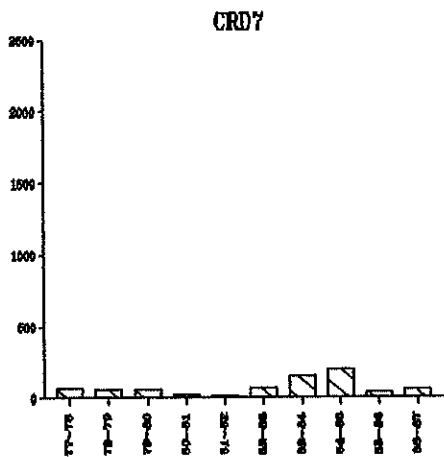
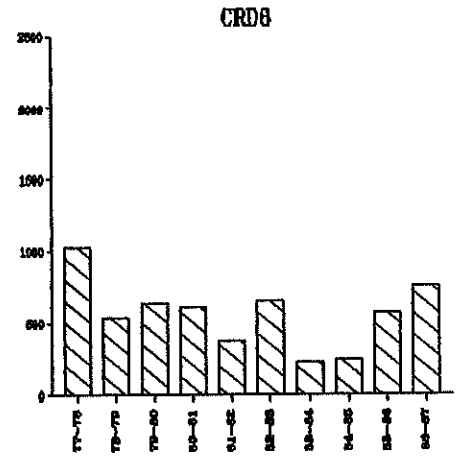
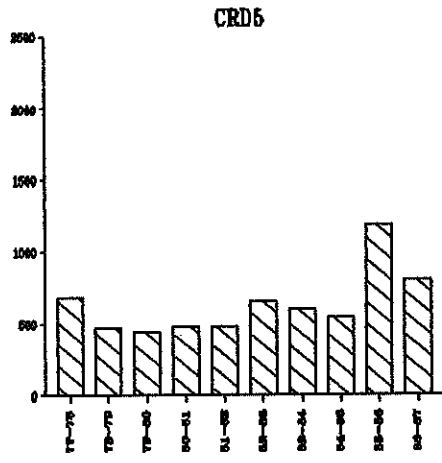
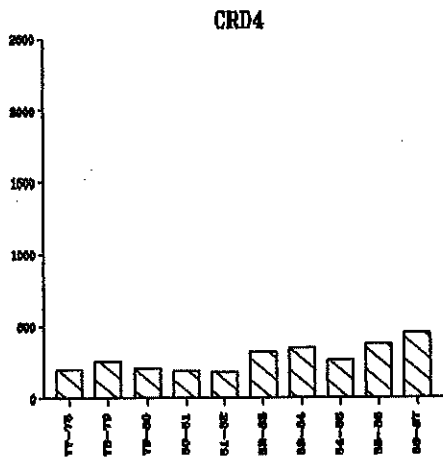
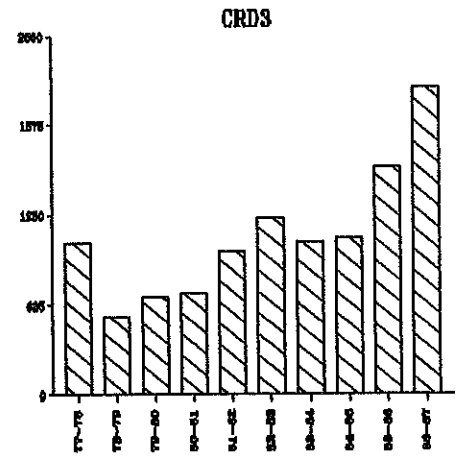
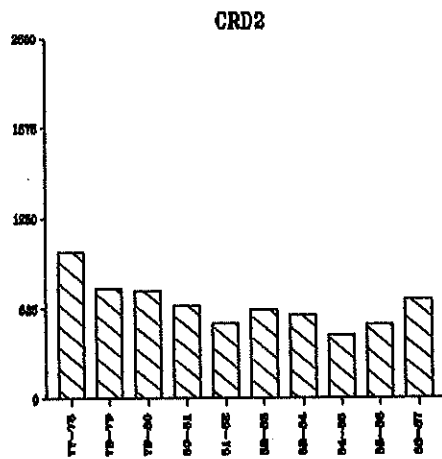
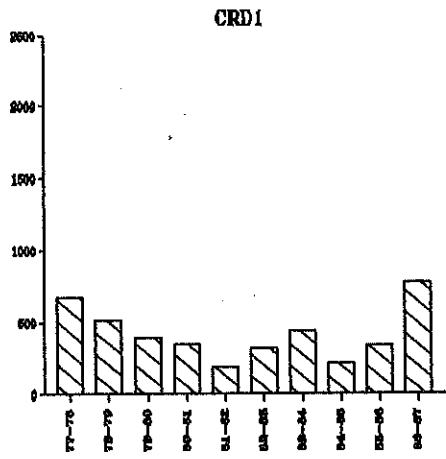


NORTH DAKOTA FLAXSEED SHIPMENTS  
BY CROP REPORTING DISTRICT ORIGIN

YEAR	Crop Reporting District									TOTAL
	1	2	3	4	5	6	7	8	9	
	(thousand bu.)									
1976-77	450 (9%)	794 (16%)	656 (13%)	307 (6%)	829 (17%)	491 (10%)	98 (2%)	323 (7%)	935 (19%)	4,883 (100%)
1977-78	678 (11%)	1,022 (17%)	1,054 (17%)	203 (3%)	679 (11%)	1,024 (17%)	74 (1%)	145 (2%)	1,295 (21%)	6,174 (100%)
1978-79	515 (11%)	765 (17%)	547 (12%)	254 (6%)	474 (10%)	533 (12%)	57 (1%)	295 (6%)	1,102 (24%)	4,542 (100%)
1979-80	398 (9%)	752 (16%)	682 (15%)	207 (5%)	438 (10%)	641 (14%)	59 (1%)	203 (4%)	1,202 (26%)	4,582 (100%)
1980-81	348 (8%)	648 (16%)	707 (17%)	194 (4%)	481 (12%)	609 (15%)	22 (1%)	138 (3%)	1,029 (25%)	4,176 (100%)
1981-82	195 (5%)	530 (15%)	996 (27%)	178 (5%)	475 (13%)	377 (10%)	14 (0%)	147 (4%)	731 (20%)	3,644 (100%)
1982-83	319 (7%)	617 (13%)	1,235 (25%)	323 (7%)	654 (13%)	655 (13%)	67 (1%)	223 (5%)	780 (16%)	4,883 (100%)
1983-84	441 (10%)	579 (14%)	1,062 (25%)	349 (8%)	602 (14%)	227 (5%)	149 (4%)	239 (6%)	587 (14%)	4,235 (100%)
1984-85	217 (5%)	443 (11%)	1,097 (27%)	266 (6%)	541 (13%)	249 (6%)	204 (5%)	265 (6%)	816 (20%)	4,098 (100%)
1985-86	336 (6%)	518 (9%)	1,587 (29%)	373 (7%)	1,188 (22%)	573 (10%)	45 (1%)	247 (4%)	635 (12%)	5,503 (100%)
1986-87	780 (12%)	697 (10%)	2,132 (32%)	454 (7%)	803 (12%)	759 (11%)	62 (1%)	282 (4%)	697 (11%)	6,666 (100%)
3 Year Average	444 (8%)	553 (10%)	1,605 (30%)	364 (7%)	844 (6%)	527 (10%)	104 (2%)	265 (5%)	716 (13%)	5,422 (100%)



FLAXSEED SHIPMENTS BY CROP REPORTING DISTRICT  
(thousand bushels)



**CORN**

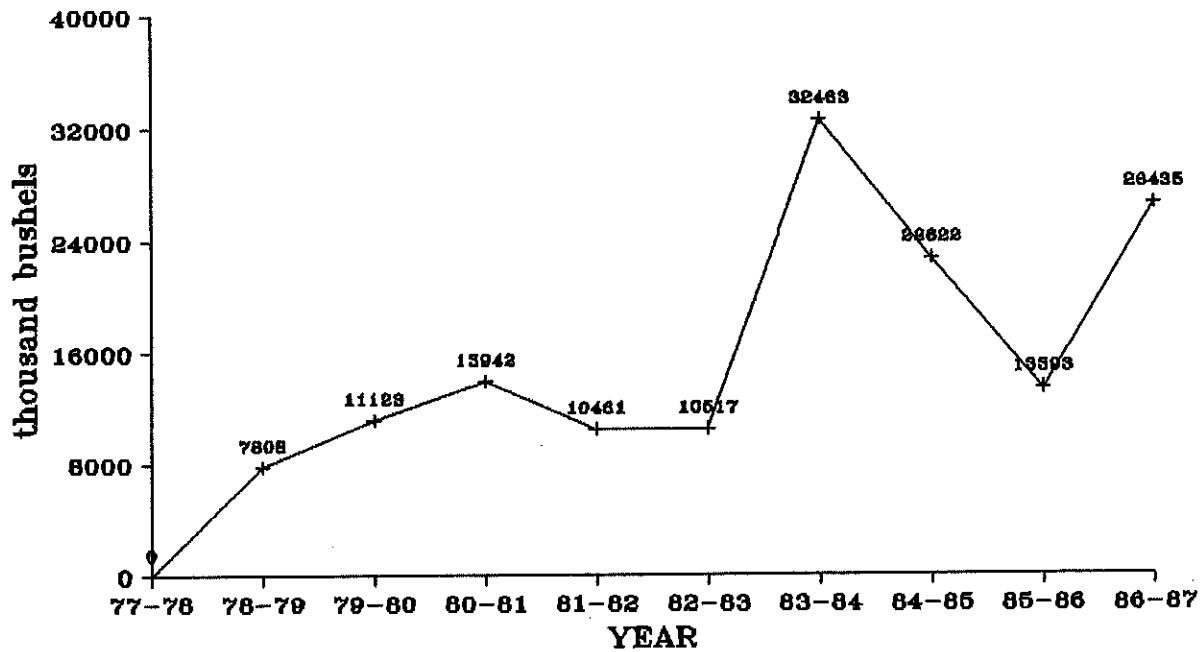
NORTH DAKOTA CORN SHIPMENTS  
BY DESTINATION

YEAR	MINNEAPOLIS-ST. PAUL	DULUTH-SUPERIOR	WEST	MISC. MARKETS	TOTAL
(thousand bu.)					
1977-78 <sup>a</sup>	0	0	0	0	0
1978-79	157 (2%)	262 (3%)	6,373 (82%)	1,019 (13%)	7,808 (100%)
1979-80	265 (2%)	270 (2%)	9,802 (88%)	786 (7%)	11,123 (100%)
1980-81	406 (3%)	154 (1%)	11,409 (82%)	2,013 (14%)	13,942 (100%)
1981-82	514 (5%)	243 (2%)	7,247 (69%)	2,457 (23%)	10,460 (100%)
1982-83	296 (3%)	350 (3%)	5,474 (52%)	4,397 (42%)	10,518 (100%)
1983-84	2,735 (8%)	4,175 (13%)	20,323 (63%)	5,229 (16%)	32,463 (100%)
1984-85	1,189 (5%)	2,859 (13%)	13,659 (60%)	4,916 (22%)	22,623 (100%)
1985-86	1,254 (9%)	68 (1%)	6,488 (48%)	5,584 (42%)	13,394 (100%)
1986-87	359 (1%)	59 (0%)	18,952 (72%)	7,067 <sup>b</sup> (27%)	26,437 (100%)
3 Year Average	934 (4%)	995 (5%)	13,033 (63%)	5,855 (28%)	20,817 (100%)

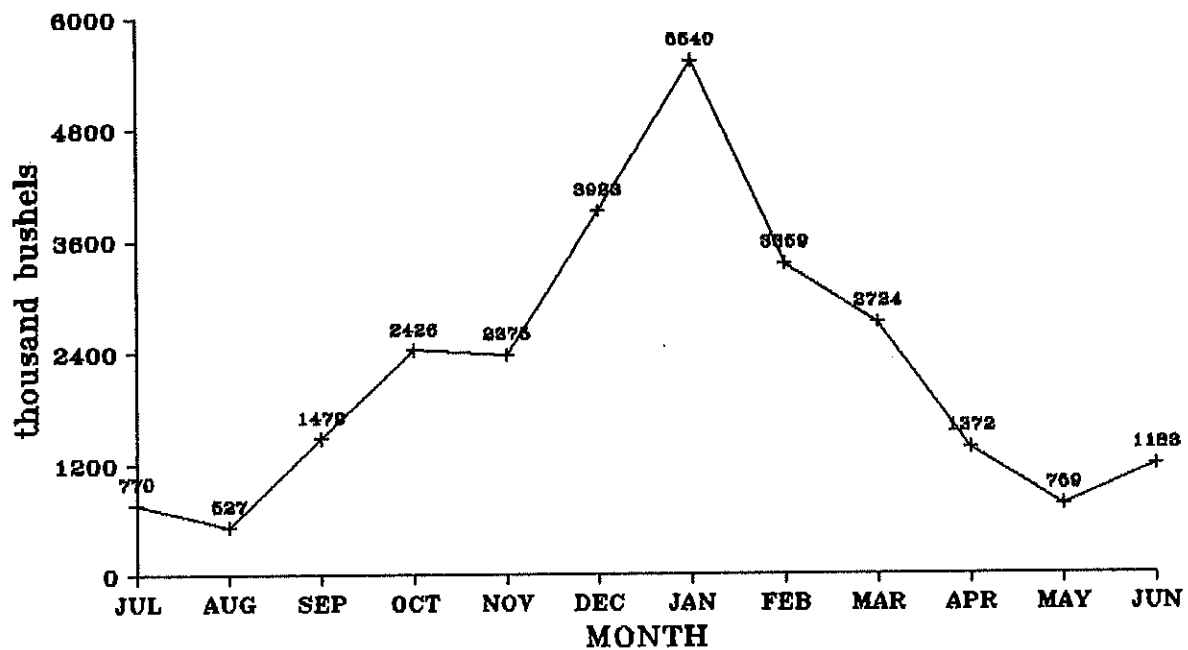
<sup>a</sup> Prior to 1978-79 corn movements were reported as "miscellaneous".

<sup>b</sup> Miscellaneous markets for corn include Midland/Southwest States (1,780,997 bushels or 7%), North Dakota destinations (1,003,243 bushels or 4%), Other Minnesota/Wisconsin (490,521 bushels or 2%), and all other miscellaneous destinations (3,792,359 bushels or 14%).

## CORN SHIPMENTS 1977-78 to 1986-87



## CORN SHIPMENTS BY MONTH, 1986-87

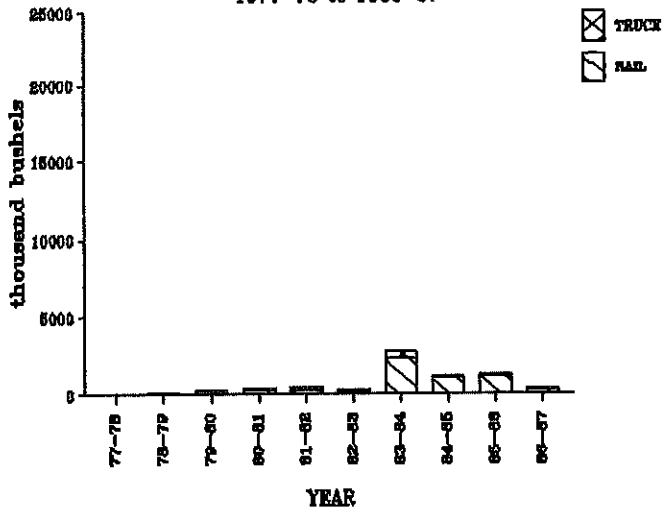


NORTH DAKOTA CORN SHIPMENTS BY RAIL AND TRUCK AND DESTINATION

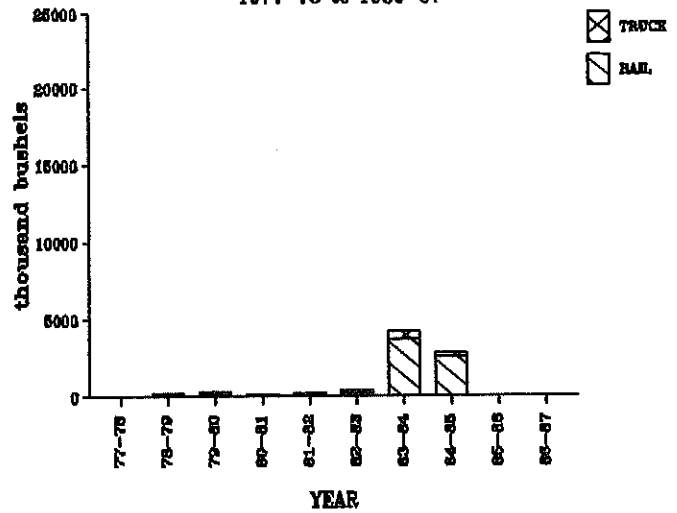
YEAR	<u>MINNEAPOLIS-ST. PAUL</u>		<u>DULUTH-SUPERIOR</u>		<u>WEST</u>		<u>MISC. MARKETS</u>		<u>TOTAL</u>	
	Rail	Truck	Rail	Truck	Rail	Truck	Rail	Truck	Rail	Truck
(thousand bu.)										
1977-78 <sup>a</sup>	0	0	0	0	0	0	0	0	0	0
1978-79	132 (84%)	25 (16%)	117 (45%)	142 (55%)	6,233 (98%)	140 (2%)	785 (77%)	234 (23%)	7,267 (93%)	541 (7%)
1979-80	221 (83%)	44 (17%)	150 (56%)	120 (44%)	9,752 (99%)	50 (1%)	525 (71%)	261 (29%)	10,648 (96%)	475 (4%)
1980-81	322 (79%)	84 (21%)	100 (53%)	54 (47%)	11,220 (98%)	189 (2%)	815 (40%)	1,198 (60%)	12,417 (89%)	1,525 (11%)
1981-82	278 (54%)	236 (46%)	74 (31%)	169 (69%)	6,465 (89%)	782 (11%)	256 (10%)	2,201 (90%)	7,072 (68%)	3,388 (32%)
1982-83	155 (52%)	141 (48%)	196 (56%)	154 (44%)	4,748 (87%)	726 (13%)	1,731 (39%)	2,666 (61%)	6,831 (65%)	3,687 (35%)
1983-84	2,332 (85%)	404 (15%)	3,737 (90%)	438 (10%)	20,133 (99%)	190 (1%)	3,034 (58%)	2,195 (42%)	29,236 (90%)	3,228 (10%)
1984-85	1,057 (89%)	132 (11%)	2,579 (90%)	280 (10%)	13,623 (100%)	36 (0%)	1,156 (24%)	3,759 (76%)	18,415 (81%)	4,207 (19%)
1985-86	1,185 (95%)	69 (5%)	43 (64%)	24 (36%)	6,305 (97%)	183 (3%)	2,815 (50%)	2,769 (50%)	10,348 (77%)	3,046 (23%)
1986-87	287 (80%)	71 (20%)	56 (95%)	3 (5%)	18,407 (97%)	544 (3%)	2,703 (38%)	4,364 (62%)	21,454 (81%)	4,982 (19%)
3 Year Average	834 (90%)	91 (10%)	893 (90%)	102 (10%)	12,778 (98%)	254 (2%)	2,225 (38%)	3,631 (62%)	16,739 (80%)	4,078 (20%)

<sup>a</sup>Prior to 1978-79, corn movements were reported as "miscellaneous".

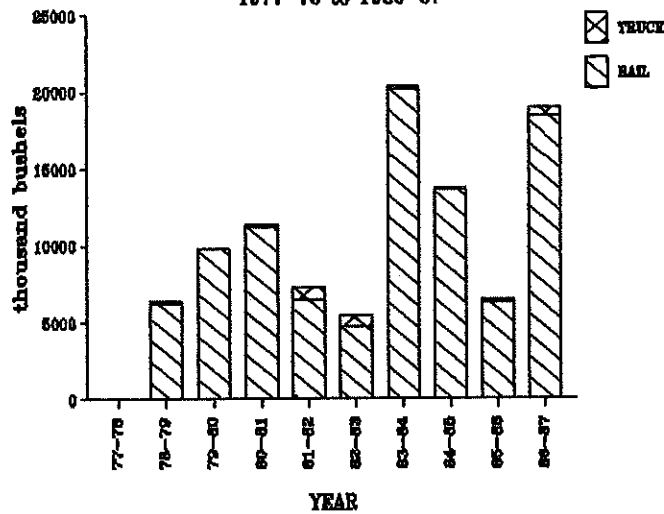
**CORN TO MPLS**  
1977-78 to 1986-87



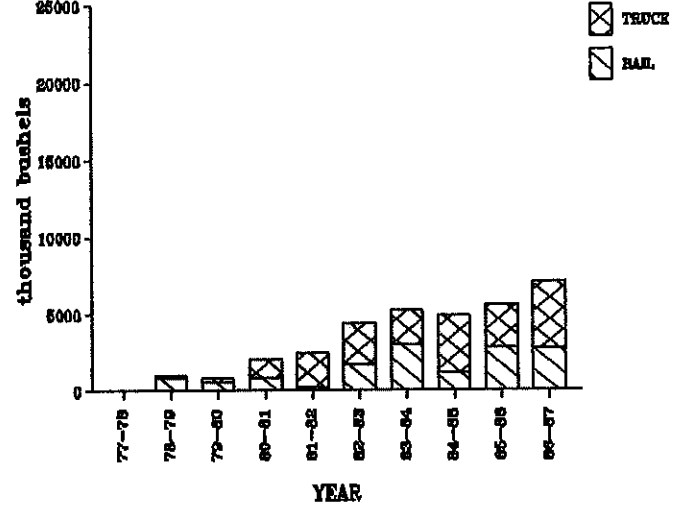
**CORN TO D/S**  
1977-78 to 1986-87



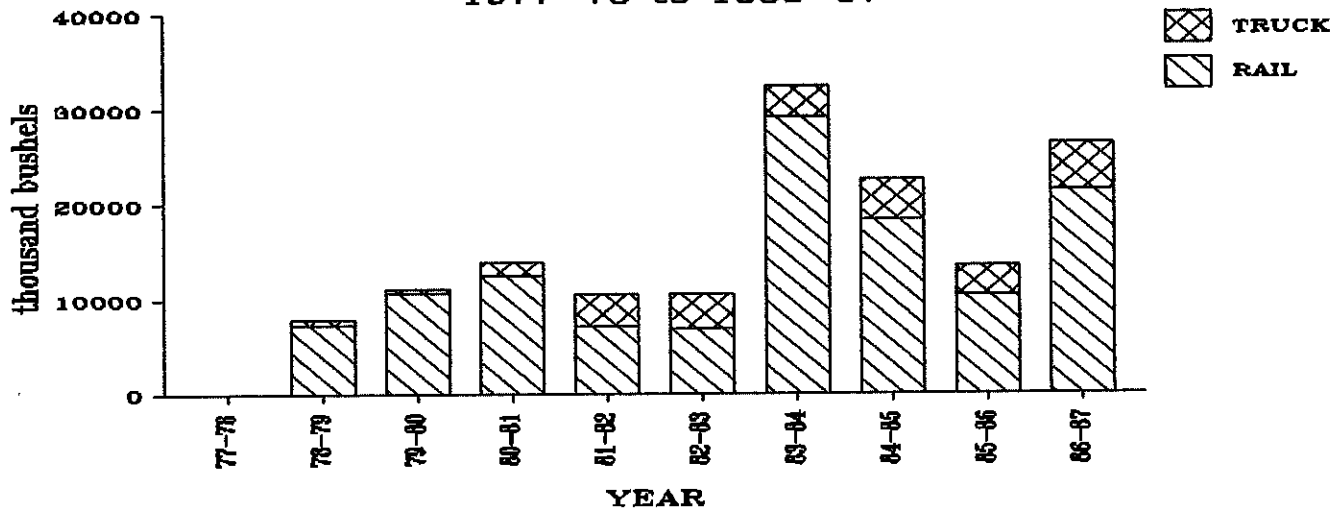
**CORN TO WEST**  
1977-78 to 1986-87



**CORN TO MISC**  
1977-78 to 1986-87



**ALL CORN SHIPMENTS**  
1977-78 to 1986-87



NORTH DAKOTA CORN SHIPMENTS  
BY CROP REPORTING DISTRICT ORIGIN

YEAR	Crop Reporting District									TOTAL
	1	2	3	4	5	6	7	8	9	
	(thousand bu.)									
1976-77 <sup>a</sup>	0 (0%)	0 (0%)	0 (0%)	0 (0%)	0 (0%)	0 (0%)	0 (0%)	0 (0%)	0 (0%)	0 (0%)
1977-78 <sup>a</sup>	0 (0%)	0 (0%)	0 (0%)	0 (0%)	0 (0%)	0 (0%)	0 (0%)	0 (0%)	0 (0%)	0 (0%)
1978-79	0 (0%)	0 (0%)	424 (5%)	0 (0%)	64 (1%)	1,388 (18%)	0 (0%)	3 (0%)	5,929 (76%)	7,808 (100%)
1979-80	0 (0%)	0 (0%)	384 (3%)	0 (0%)	53 (0%)	2,527 (23%)	0 (0%)	0 (0%)	8,159 (73%)	11,123 (100%)
1980-81	2 (0%)	0 (0%)	382 (3%)	0 (0%)	88 (1%)	2,329 (17%)	0 (0%)	0 (0%)	11,141 (80%)	13,942 (100%)
1981-82	0 (0%)	0 (0%)	769 (7%)	3 (0%)	35 (0%)	1,982 (19%)	0 (0%)	0 (0%)	7,671 (73%)	10,460 (100%)
1982-83	121 (1%)	6 (0%)	791 (8%)	33 (0%)	137 (1%)	3,132 (30%)	5 (0%)	0 (0%)	6,293 (60%)	10,518 (100%)
1983-84	12 (0%)	139 (0%)	1,997 (6%)	242 (1%)	1,159 (4%)	9,477 (29%)	249 (1%)	224 (1%)	18,963 (58%)	32,463 (100%)
1984-85	0 (0%)	20 (0%)	1,109 (5%)	49 (0%)	600 (3%)	6,800 (30%)	496 (2%)	304 (1%)	13,246 (59%)	22,623 (100%)
1985-86	1 (0%)	9 (0%)	334 (2%)	12 (0%)	162 (1%)	3,181 (24%)	12 (0%)	11 (0%)	9,671 (72%)	13,394 (100%)
1986-87	0 (0%)	129 (0%)	1,394 (5%)	95 (0%)	383 (1%)	9,360 (35%)	54 (0%)	12 (0%)	15,008 (57%)	26,437 (100%)
3 Year Average	0 (0%)	53 (0%)	946 (5%)	52 (0%)	382 (2%)	6,447 (31%)	187 (1%)	109 (1%)	12,642 (61%)	20,817 (100%)

<sup>a</sup>Prior to 1978-79, corn movements were reported as "miscellaneous".

CORN SHIPMENTS BY CROP REPORTING DISTRICT  
(thousand bushels)

