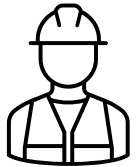


Western Dakota Energy Association

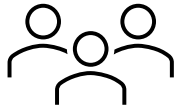
McKenzie Electric Cooperative Utility Update

May 27, 2025

McKenzie Electric Cooperative



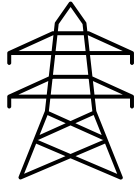
63 EMPLOYEES



4,866 MEMBERS



4,084 MILES
DISTRIBUTION



444 MILES
TRANSMISSION



76 SUBSTATIONS



13,780 METERS



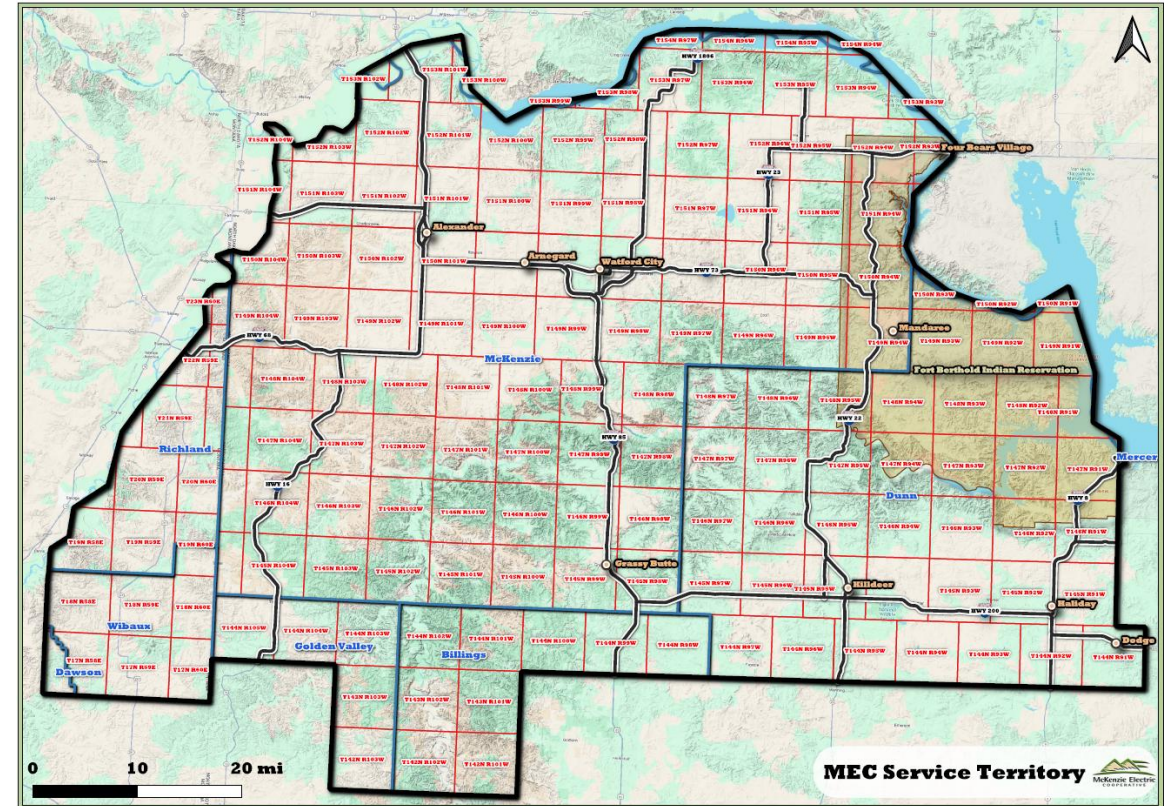
C&I SALES 97%



6,528.300,296 MWH
OF ELECTRICITY SOLD

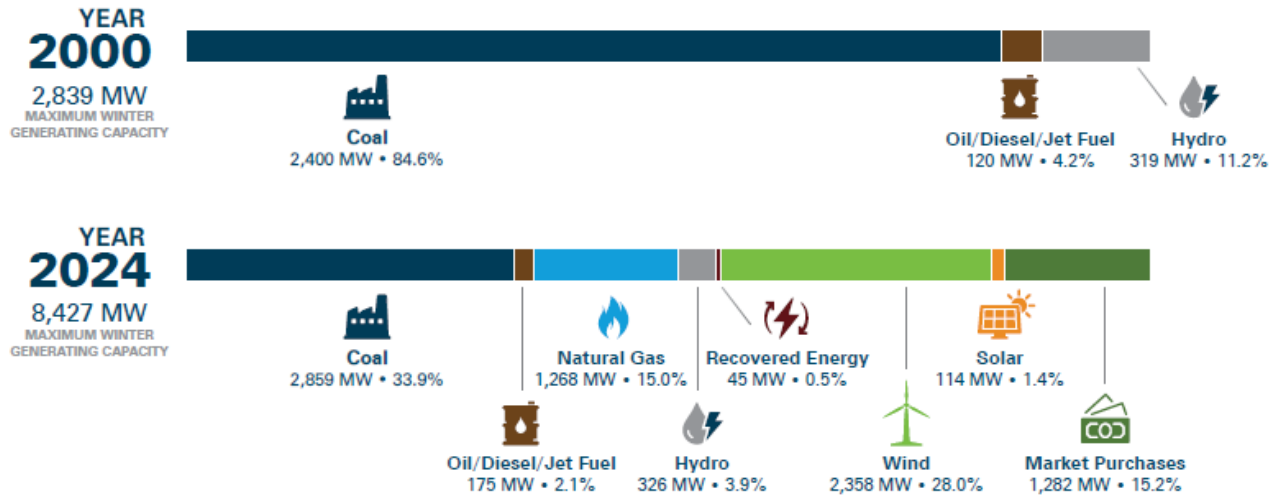


99.95%
AVAILABILITY

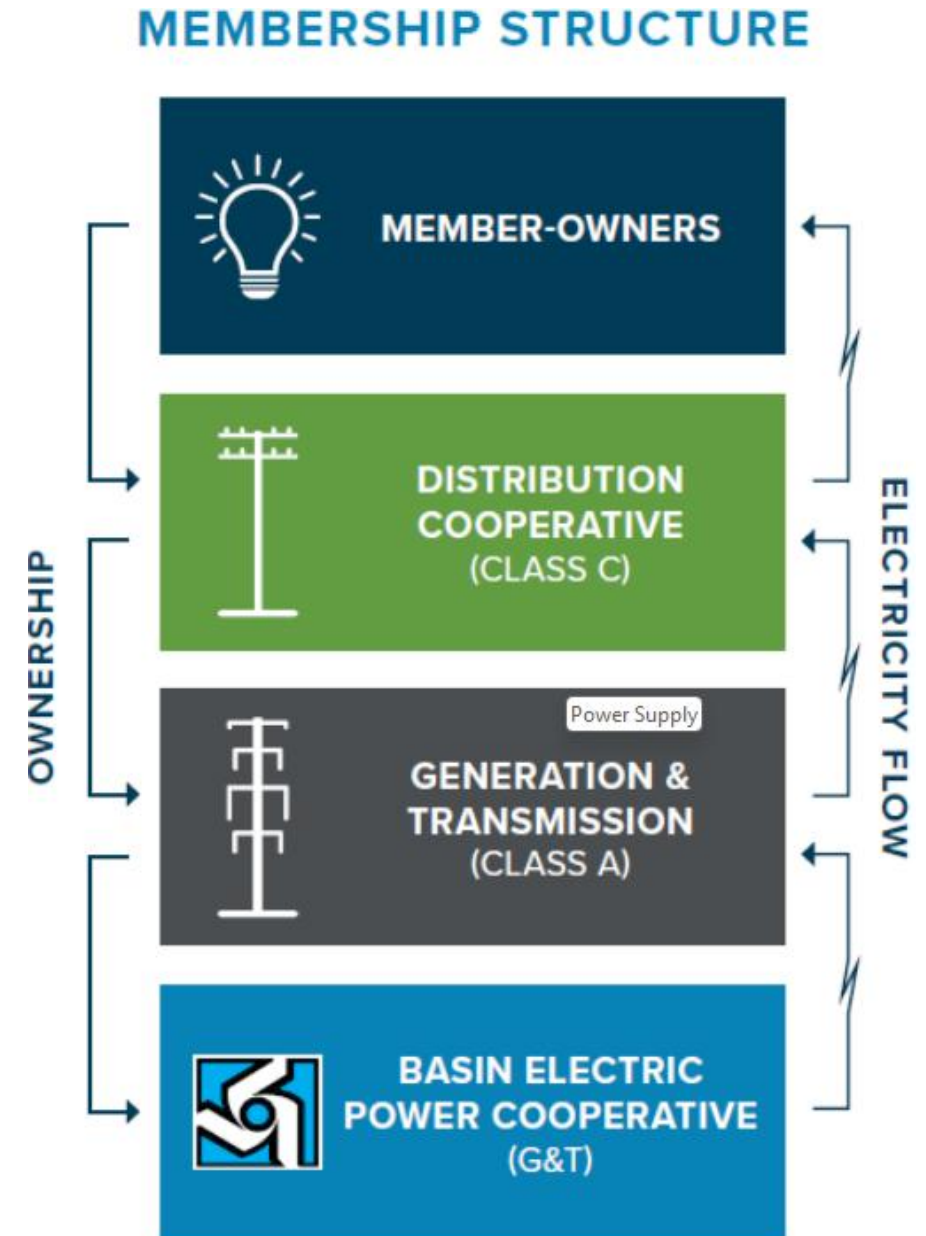


- Rural Electric Cooperative (Member Owned)
- 7 Counties MT and ND
- 9 Board of Directors
- Diverse Membership
- Rough Country/Weather Extremes

Power Supply

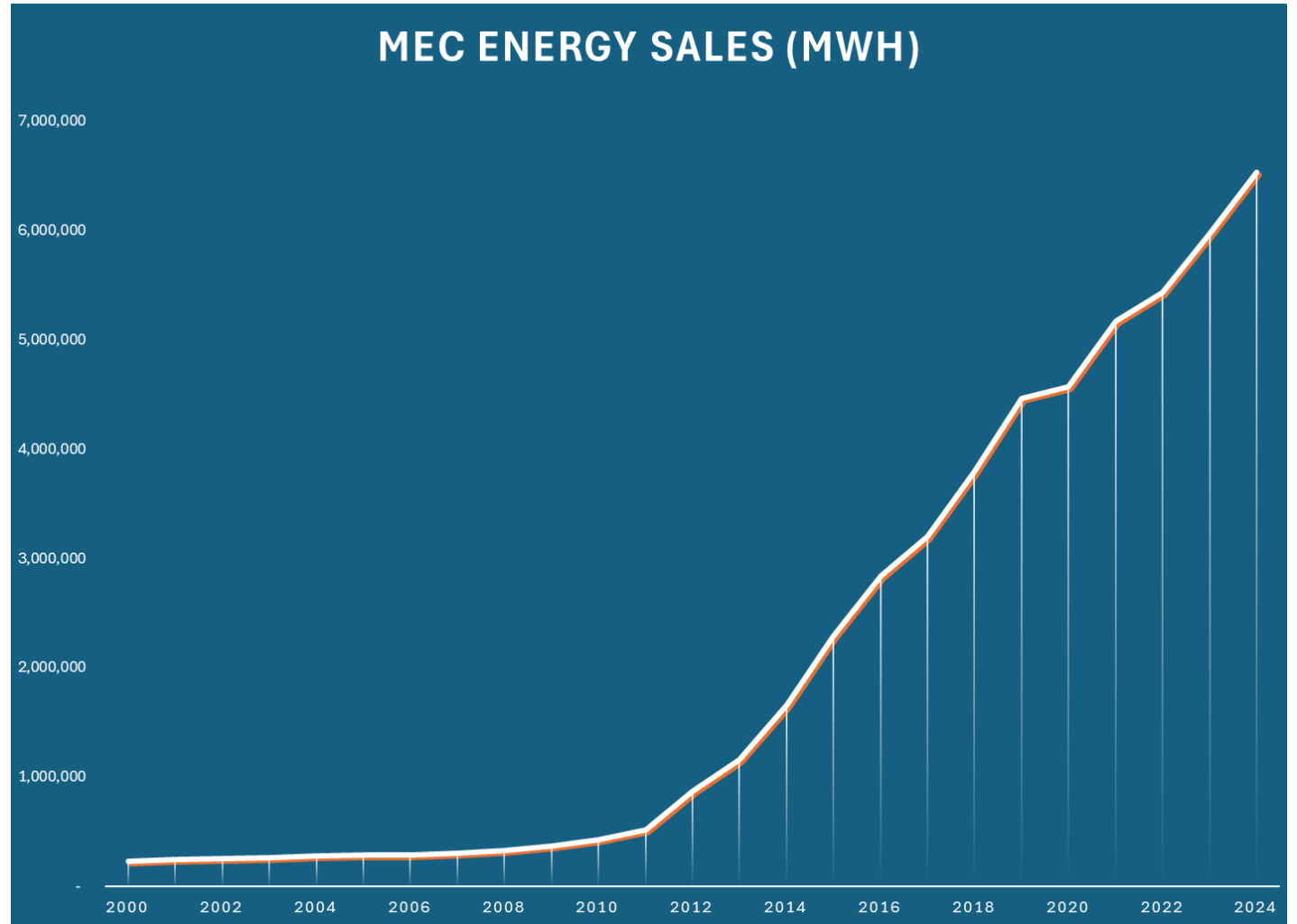


- MEC is a Class C Distribution Cooperative
- MEC receives majority of power through Basin Electric
- Power supply has evolved over time – all the above energy strategy
- Power costs are MEC's biggest expense (91% of MEC Expenses)
- In SPP Territory/Adjacent to MISO
- MEC does receive a small amount of hydro power from Western Area Power Administration (WAPA)



McKenzie's Success Story

- 750 – 800MW Average load (peak~890 MW)
- Navigating growth is part of our DNA
- Strong collaboration with Membership
- Experienced record growth for over a decade
- Stable and Low Rates
- Best in class reliability
- Members = Owners
- Maintain cost alignment and equity across membership
- Robust construction workplan
- Follow prudent utility practices
- Registered public power utility
- Not actively involved recruiting new loads





Regulatory
and
Legislative
Dynamics



MEC's
Position



Innovation



Supply/D
emand



Rate
Pressure

Key Themes
