



# In Search of the Perfect Sign Truck

January 24, 2018  
Ransom County

**Dale C. Heglund**  
NDLTAP Program Director



**ND SU**

UPPER GREAT PLAINS TRANSPORTATION INSTITUTE  
NORTH DAKOTA LOCAL TECHNICAL ASSISTANCE PROGRAM

# Perfect Sign Truck

Color

Size

Components

Truck model

Cost





## North Dakota Local Technical Assistance Program

Posted by Dale Heglund [?] - October 27

Congratulations to Jeff Baranko, Billings County - State and Regional 'YOU SHOW US' winner at the North Central LTAP Conference in Rapid City, SD on October 22, 2014! His redesigned sign truck and innovative approach to solving problems has launched Billings County into a leadership role in signing and public safety. Best of luck at the National competition! Jeff's project sponsor is Steve Chase, NDLTAP's Safety Expert. (5 photos)

# Billings County





# Congratulations



**Jeff Baranko**

**Belfield, North Dakota**

THIS YEAR'S RECIPIENT OF THE  
**2015 BUILD A BETTER MOUSETRAP 3<sup>RD</sup> PLACE AWARD**  
***REDESIGNED SIGN TRUCK***

RECOGNIZING A CREATIVE, COST-EFFICIENT SOLUTION WITH REGARD  
TO SAFETY AND THE BENEFIT OF THE COMMUNITY

You Show Us  
Safety Focus - Save Lives  
Meet FHWA Retroreflectivity Requirement  
Develop Sign Crews  
Establish Relationships  
New Technologies



**Western Counties**  
Sign Truck – Show and Tell  
(roundtable discussion)

Tuesday, January 27, 2015  
9:00 AM – 4:00 PM (MT)

Stark County Shop  
52 30th Ave West  
Dickinson ND

Jeff Baranko's/Billings County recent State and Regional "You Show Us" awards have created a great NDLTAP training opportunity. Steve Chase, NDLTAP Safety Circuit Rider and "You Show Us" program lead, wanted to share Jeff's ideas, innovation and focus on safety with other counties. Ideas were shared, resulting with the launch of the NDLTAP new Sign Truck Roundtable. In addition to Jeff's truck, counties will have the opportunity to showcase their sign trucks, sign trailers and sign equipment.

The Western Sign Truck Roundtable will be a big "Show and Tell", replacing the typical classroom format with a hands on line-up of sign trucks and equipment. Given the venue, the Stark County shop, we have the opportunity to see a wide-array of real life innovations in a comfortable environment. Al Heiser, Stark County Road Superintendent and host for the event, is confident that everyone will walk away with ideas to work more efficiently and safely. For Stark County, their hope is to find a lighter post driver and to share ideas on equipment usage.

This is a great opportunity to learn from your peers, to share your expertise, to meet old friends and to create county cooperatives.

**Target Audience:** County signing personnel.

**Note:** Please contact NDLTAP if you are able to bring an item to display at the roundtable. This training is eligible for Road Scholar credit.

**Contact Information:**

Denise Brown, 701-328-9856, denise.brown.1@ndsu.edu for registration questions  
Steve Chase, 701-328-9860, steve.chase@ndsu.edu for program agenda

**Registration available through the Learning Management System**

<http://www.ndltap.org/events/view.php?id=380>

**ROAD  
SCHOLAR** 

Lunch sponsored by









# Billings County







Billings  
County



# Billings County







Billings County



# Billings County

5 MPH  
10 MPH  
15 MPH







Billings  
County





Billings County



# Billings County





# Billings County





# Morton County



- |     |   |       |     |   |       |
|-----|---|-------|-----|---|-------|
| 1=  |       | W1-1L | 13= |       | W1-5R |
| 2=  |     | W1-1R | 14= |    | W1-5L |
| 3=  |    | W1-2L | 15= |    | W11-  |
| 4=  |    | W1-2R |     |    | W14-  |
| 5=  |    | W1-3R | 16= |    | W11-  |
| 6=  |    | W1-3L | 17= |    | R1-1  |
| 7=  |    | W1-   | 18= |    | W2-2  |
| 8=  |    | W1-4L | 19= |    | W5-7  |
| 9=  |    | W2-4  | 20= |    | W5-7  |
| 10= |  | W2-1  | 21= |  | W11-  |
| 11= |  | W3-1A | 22= |  | R1-2  |
| 12= |  | W3-2A |     |   |       |



Morton County



# Morton County



# Morton County





# Richland County



# Walsh County





# Hammers



# What's New





# McIntosh County

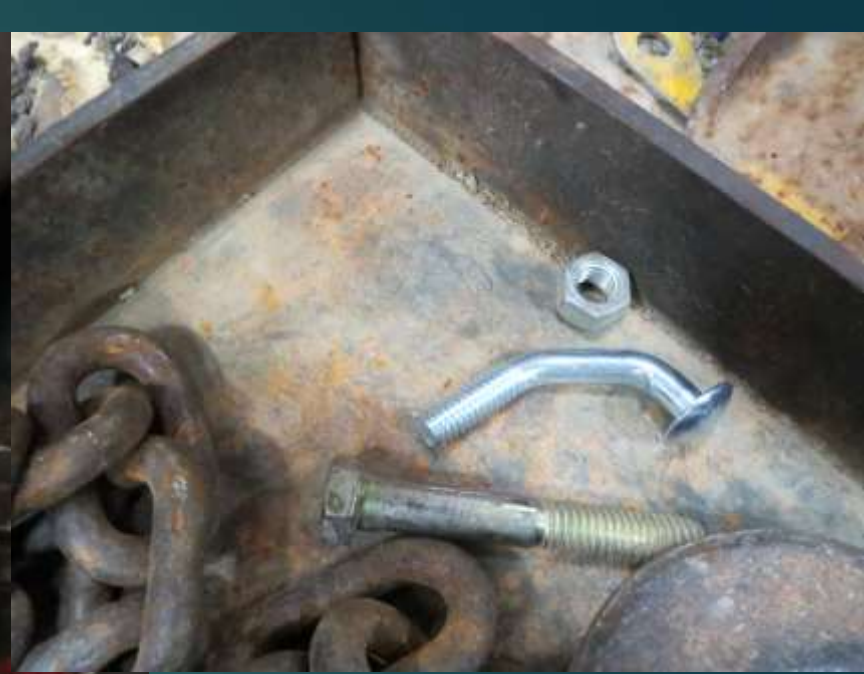




# Hand Tools









Billings County



# Burke County





# Morton County







Billings County



Burke County



# Public Announcements – Press Contacts

## Here's your sign

By Katherine Lynn on Jan 27, 2015 at 11:54 p.m.

[Like](#) [Share](#) [Print](#) [Email](#) [Tweet](#) [News Alerts](#)

Al Heiser, Stark County roads superintendent, holds a sign from the county's sign truck Tuesday at the Stark County shop in Dickinson. Road department employees from counties throughout western North Dakota met there to discuss different methods of putting up signs. "It's basically kind of a show-and-tell," Heiser said.

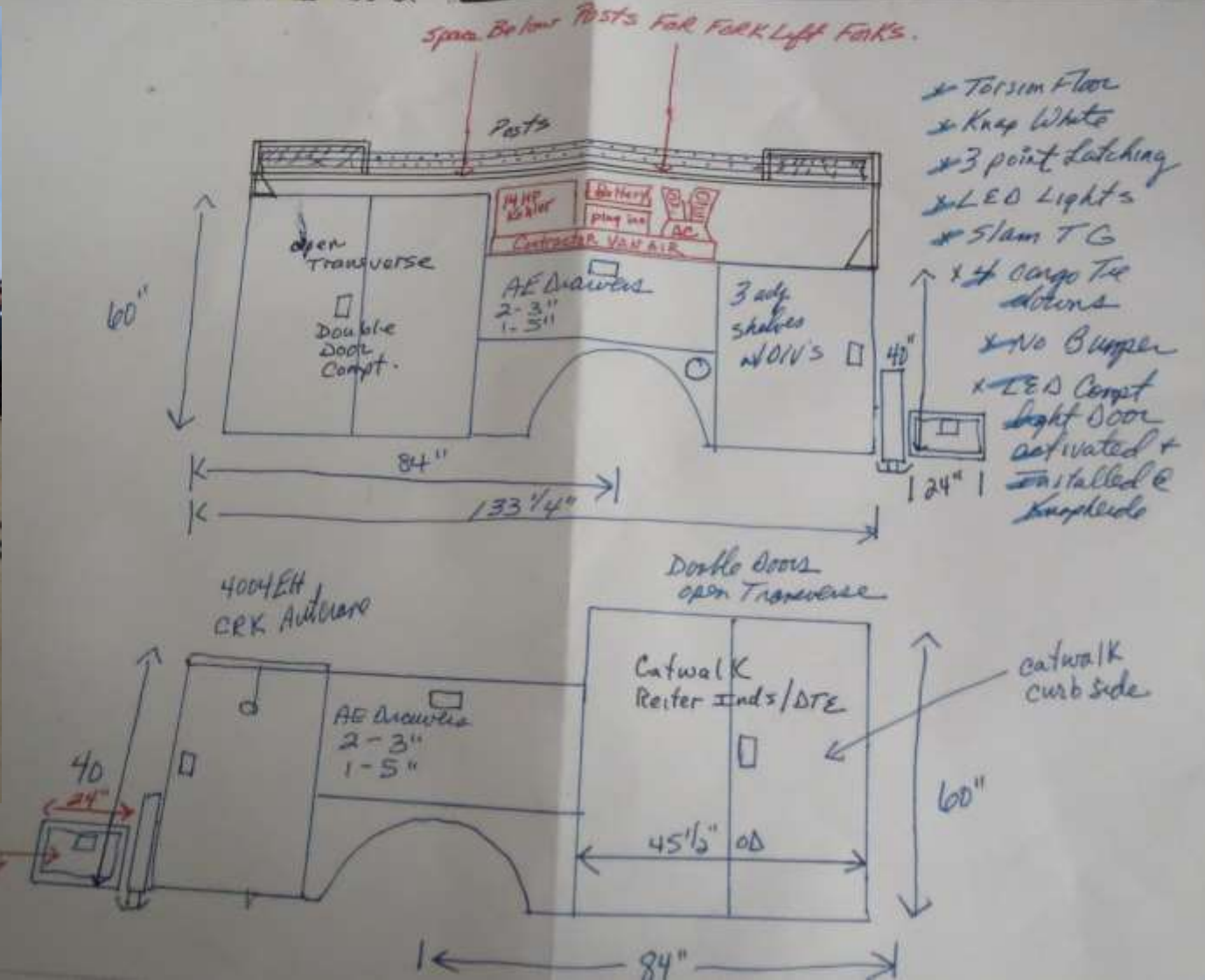


Press Photo by Katherine Lynn Al Heiser, Stark County roads superintendent, holds a sign from the county's sign truck Tuesday at the Stark County shop in Dickinson. Road department employees from counties throughout western North Dakota met there to discuss different methods of putting up signs. "It's basically kind of a show-and-tell," Heiser said.

# City of Dickinson







City of Dickinson





City of  
Dickinson





City of  
Dickinson



# Bowman County







Burleigh County

# Burleigh County





# Burleigh County



# Burleigh County





# South Dakota Beadle County





Beadle County



# Beadle County







Morton County



# NDDOT







NDDOT



A white box truck with a yellow-green cargo area is parked in front of a large white structure. The truck has a white cab and a white box body. The cargo area is yellow-green with horizontal slats. The truck is parked on a dirt surface. The text "Williams County" is overlaid on the side of the cargo area in a yellow, serif font.

Williams County



Williams  
County



# Williams County





# Stark County





# Barnes County





# Ward County







# Burke County





# Burke County





# Burke County



# Dickey County





# Dickey County





# Dickey County





# Trail County







Trail County





Divide County





Divide County

617340

PA



# Grand Forks County





# McKenzie County









# Divide County







NDDOT



# NDDOT





# 3-D Specialties





# Morton County



For Sale –  
The **PERFECT** Sign Truck



# In Search of the Perfect Sign Truck

March 21, 2017  
ATSSA “How To” Conference

**Dale C. Heglund**  
NDLTAP Program Director



**NDSU**

UPPER GREAT PLAINS TRANSPORTATION INSTITUTE  
NORTH DAKOTA LOCAL TECHNICAL ASSISTANCE PROGRAM