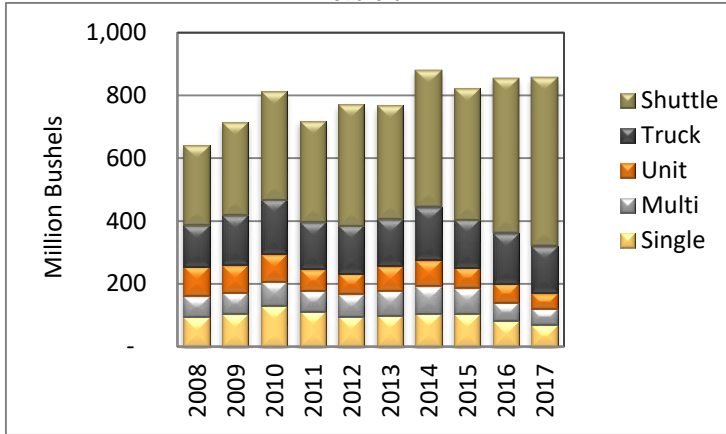


# North Dakota Elevators Transportation Activities and Service, 2018 Survey

March 2018

## ND Grain & Oilseed Shipments

All Elevators



## Destinations Reported

All Elevators

Year	Duluth	MN/CHX Midwest	Gulf	PNW	ND
2010	5%	16%	8%	29%	22%
2011	3%	16%	8%	32%	21%
2012	2%	14%	10%	32%	19%
2013	2%	13%	11%	30%	18%
2014	2%	13%	8%	36%	17%
2015	2%	13%	8%	38%	15%
2016	3%	13%	6%	43%	15%
2017	1%	14%	6%	44%	12%

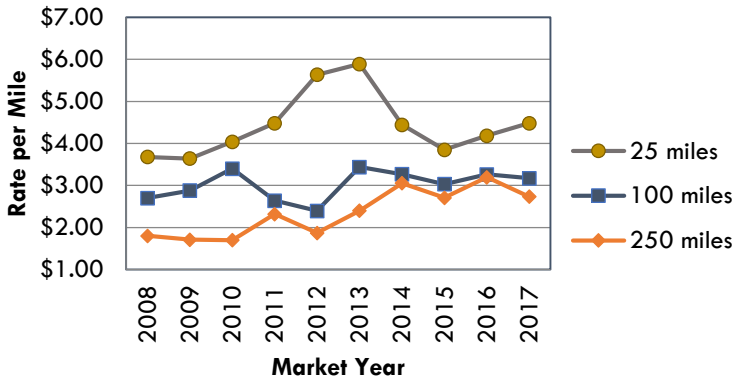
Sum Less Than 100% Due to Unknown/Other

Source: NDPSC Grain Movement Database Summaries

## SURVEY RESPONSES

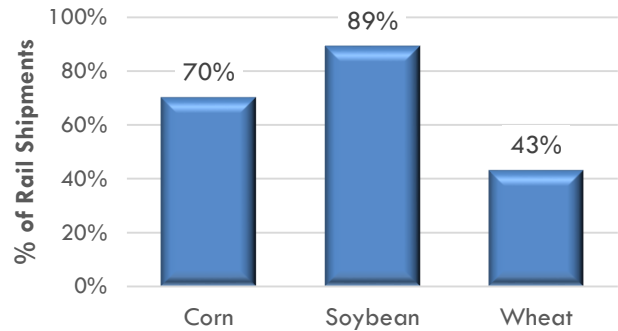
Response Rate: 53%=68 responses of 126 valid mailed • Location by Region: West=10, Central=21, East=37

### Truck Rate



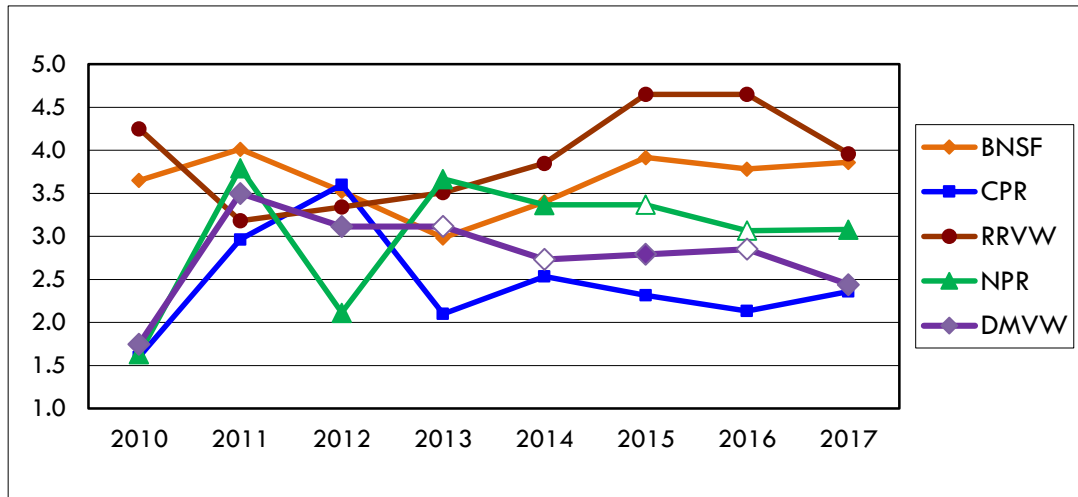
### Average Share of Rail Shipments that Move Direct to an Export Terminal

(weighted by volume shipped)



### Rail Carrier Service Overall Rating Trends

(1=poor to 5=excellent)



# North Dakota Elevators Transportation Activities and Service, 2018 Survey

March 2018

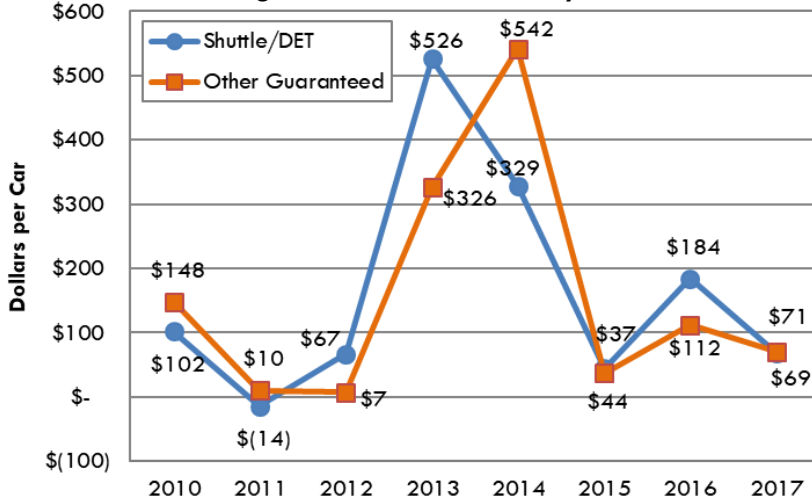
**Rail Carrier Service, Current Year Service Factor Ratings**  
(weighted by rail handle)  
1=poor to 5=excellent

Primary Carrier	Timely Delivery of Equipment	Car Ordering Alternatives/ Process	Condition of Equipment	Availability of Order Information	Access to Marketing Personnel	Average 2017	Average 2016
BNSF	3.6	3.7	4.2	4.1	3.7	3.9	3.8
CPR	2.5	2.9	1.9	2.2	2.3	2.4	2.1
RRVW	4.1	4.2	2.9	4.3	4.3	4.0	4.7
DMVW	3.0	3.2	1.0	2.2	2.8	2.4	2.9
NPR	3.4	3.4	2.1	3.2	3.3	3.1	2.9
<b>Average</b>	<b>3.3</b>	<b>3.4</b>	<b>3.2</b>	<b>3.5</b>	<b>3.5</b>	<b>3.4</b>	<b>3.4</b>

Responses Weighted by Rail Shipments; For fewer than 2 response for railroad rating not included.

## RAIL PURCHASES AND DELIVERY (weighted by volume shipped)

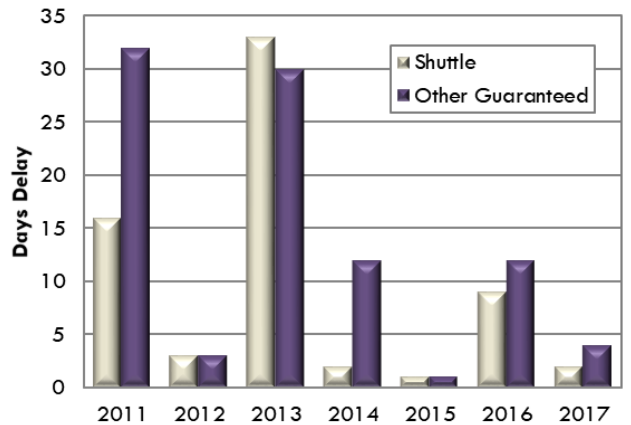
### Average Rail Premiums Paid, by Market Year



#### Range for 2017 Rail Premiums

2017 Shuttle/DET: \$0...\$400  
2017 Other Guaranteed: \$0...\$150

### Days Delay on Rail Deliveries

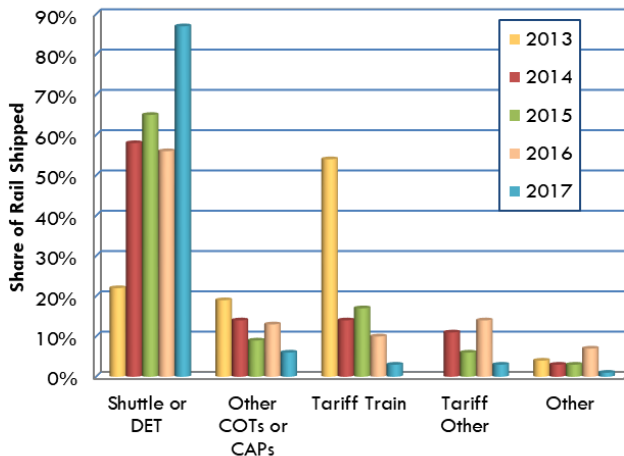


#### Range for Current Days Delay

Shuttle/DET: 0...10 days  
Other Guaranteed: 0...10 days

\*Other Guaranteed Rail Freight includes COTs, etc.

### Rail Freight Purchases



### Current Year Rail Market Activity Preview

Market Year	Share Ordered by March 15	Average premium paid for any guaranteed rail freight service purchased for the current year?	
		Shuttle	Other Guaranteed
\$ per car			
2013	6%	0	1
2014	25%	840	641
2015	43%	182	268
2016	33%	38	12
2017	29%	297	184
2018	42%	56	6

Funding provided by the North Dakota Wheat Commission. Thank you to the North Dakota Grain Dealers Association for their cooperation on this survey.

Upper Great Plains Transportation Institute, North Dakota State University, is solely responsible for the content of the report, 701.231.7767, [info@ugpti.org](mailto:info@ugpti.org)

NDSU does not discriminate in its programs and activities on the basis of age, color, gender expression/identity, genetic information, marital status, national origin, participation in lawful off-campus activity, physical or mental disability, pregnancy, public assistance status, race, religion, sex, sexual orientation, spousal relationship to current employee, or veteran status, as applicable. Direct inquiries to Vice Provost, Title IX/ADA Coordinator, Old Main 201, 701-231-7708, [ndsu.eoaa@ndsu.edu](mailto:ndsu.eoaa@ndsu.edu).