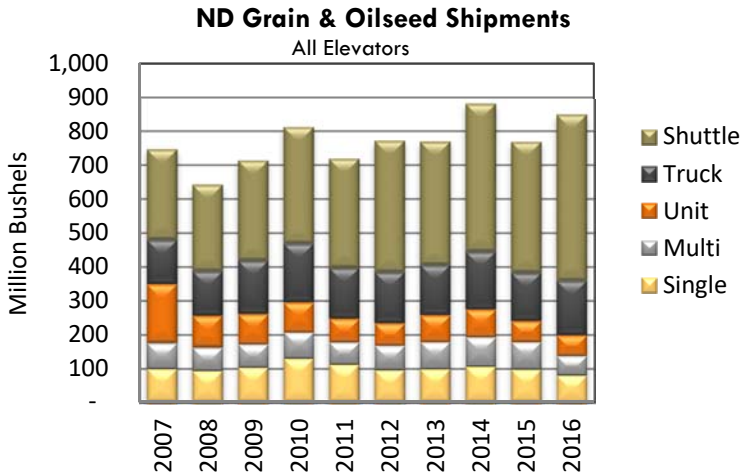


# North Dakota Elevators Transportation Activities and Service, 2017 Survey

March 2017



### Destinations Reported

All Elevators

Year	Duluth	MN/CHX Midwest	Gulf	PNW	ND
2009	5%	21%	6%	32%	20%
2010	5%	16%	8%	29%	22%
2011	3%	16%	8%	32%	21%
2012	2%	14%	10%	32%	19%
2013	2%	13%	11%	30%	18%
2014	2%	13%	9%	35%	17%
2015	2%	12%	9%	39%	15%
2016	3%	13%	6%	43%	15%

*Sum Less Than 100% Due to Unknown/Other*

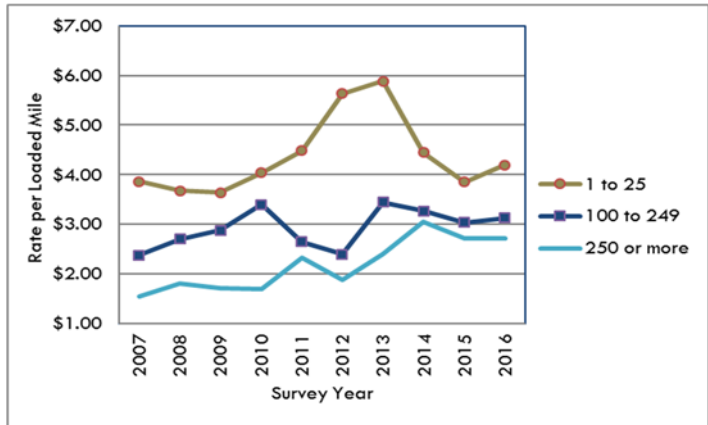
Source: NDPSC Grain Movement Database Summaries

## SURVEY RESPONSES

Response Rate: 48%=63 responses of 131 valid mailed • Location by Region: West=10, Central=13, East=40

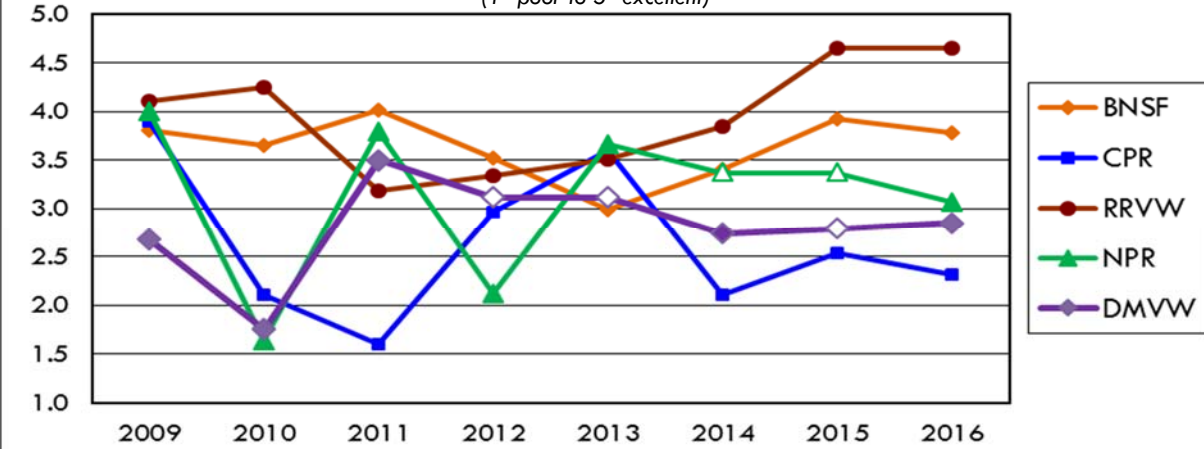
### Truck Rate

Miles	2012	2013	2014	2015	2016
	\$ per mile				
1 to 25	5.63	5.89	4.44	3.85	4.20
100 to 249	2.39	3.44	3.27	3.03	3.13
250 or more	1.87	2.40	3.05	2.71	2.71



### Rail Carrier Service Overall Rating Trends

(1=poor to 5=excellent)



# North Dakota Elevators Transportation Activities and Service, 2017 Survey

March 2017

**Rail Carrier Service, Current Year Service Factor Ratings**  
(weighted by rail handle)  
1=poor to 5=excellent

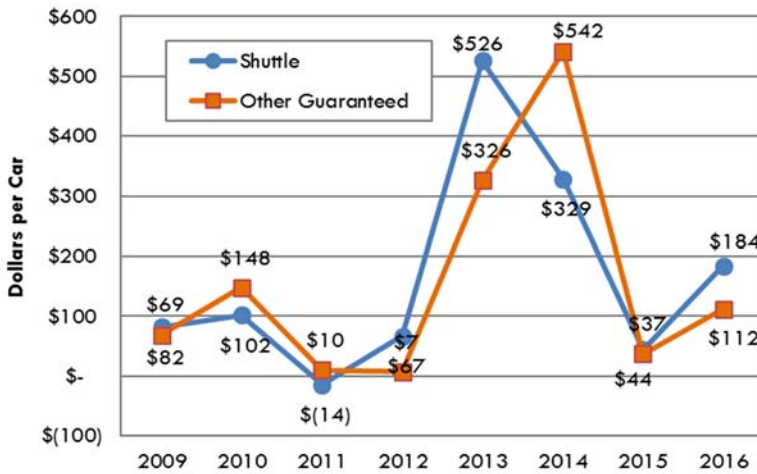
Rail Carrier	Marketing and Sales Service	Timely Delivery of Equipment	Car Ordering Alternatives/ Process	Condition of Equipment	Availability of Order Information	Access to Marketing Personnel	Average 2016	Average 2015
BNSF	3.9	3.4	3.4	4.3	4.0	3.7	3.8	3.9
CPR	2.2	2.5	2.8	1.2	2.1	2.0	2.1	2.3
RRVW	4.7	5.0	5.0	3.3	4.9	5.0	4.7	4.7
DMVW	3.4	2.7	3.0	1.6	2.7	3.7	2.9	n.a.
NPR	3.0	2.5	3.1	2.8	3.0	3.0	2.9	n.a.
<b>Average</b>	<b>3.4</b>	<b>3.3</b>	<b>3.4</b>	<b>3.2</b>	<b>3.5</b>	<b>3.5</b>	<b>3.4</b>	<b>3.4</b>

Responses Weighted by Rail Shipments; For fewer than 3 response for railroad rating not included.

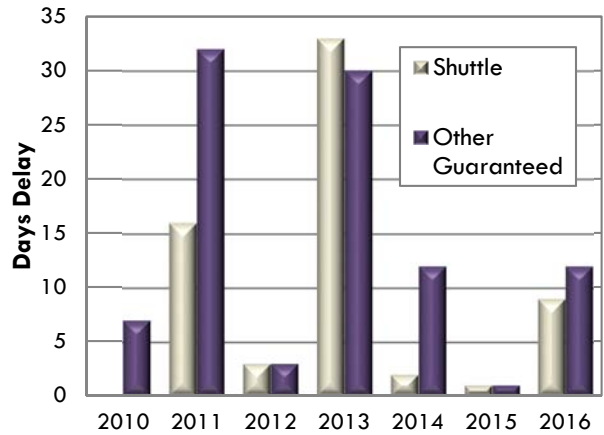
## RAIL PURCHASES AND DELIVERY

(weighted by volume shipped)

### Average Rail Premiums Paid, by Market Year



### Days Delay on Rail Deliveries



#### Range for Rail Premiums

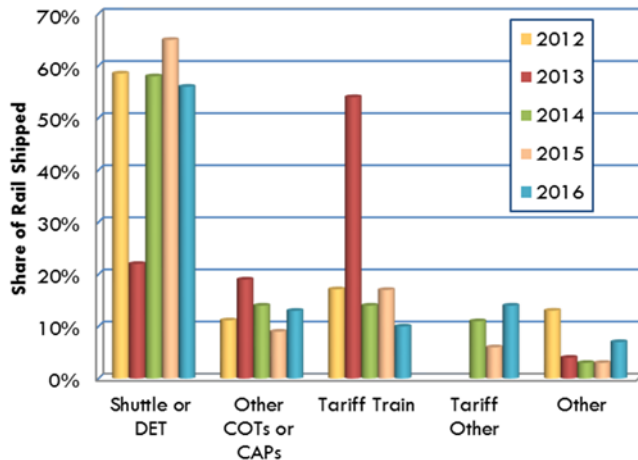
2016 Shuttle: \$0...\$800  
2016 Other Guaranteed: \$0...\$400

#### Range for Days Delay

Current Shuttle: 0...21 days  
Current Other Guaranteed: 0...45 days

\*Other Guaranteed Rail Freight includes COTs, DET, etc.

### Rail Freight Purchases



### Current Year Rail Market Activity Preview

Market Year	Share Ordered by March 15	Average premium paid for any guaranteed rail freight service purchased for the current year?	
		Shuttle	Other Guaranteed
\$ per car			
2012	36%	31	81
2013	6%	0	1
2014	25%	840	641
2015	43%	182	268
2016	33%	38	12
2017	29%	297	184

Funding provided by the North Dakota Wheat Commission. Thank you to the North Dakota Grain Dealers Association for their cooperation on this survey.

Upper Great Plains Transportation Institute, North Dakota State University, is solely responsible for the content of the report, 701.231.7767, [info@ugpti.org](mailto:info@ugpti.org)

North Dakota State University does not discriminate on the basis of age, color, disability, gender expression/identity, genetic information, marital status, national origin, public assistance status, sex, sexual orientation, status as a U.S. veteran, race or religion. Direct inquiries to the Vice President for Equity, Diversity and Global Outreach, Fargo, N.D., 205 Old Main, (701)231-7708 (ver. 2011.06).