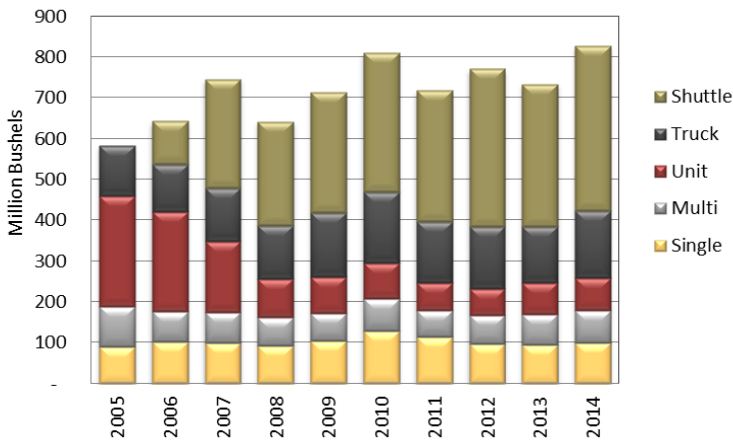


North Dakota Elevators Transportation Activities and Service, 2015 Survey

March 2015

ND Grain & Oilseed Shipments

All Elevators



Destinations Reported

All Elevators

Year	Duluth	MN	Gulf	PNW	ND
2007	6%	20%	8%	35%	15%
2008	2%	19%	6%	38%	19%
2009	5%	21%	6%	32%	20%
2010	5%	16%	8%	29%	22%
2011	3%	16%	8%	32%	21%
2012	2%	14%	10%	32%	19%
2013	2%	13%	11%	30%	18%
2014	2%	13%	9%	35%	17%

Sum Less Than 100% Due to Unknown/Other

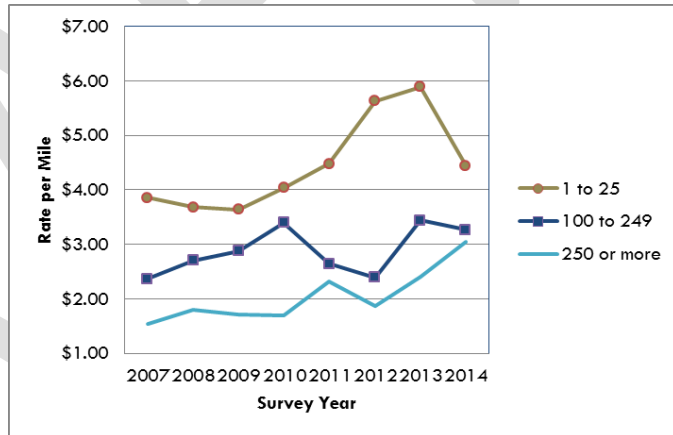
PSC Grain Movement Database Summaries

SURVEY RESPONSES

Response Rate: 47%=62 responses of 133 mailed • Location by Region: West=10, Central=16, East=36

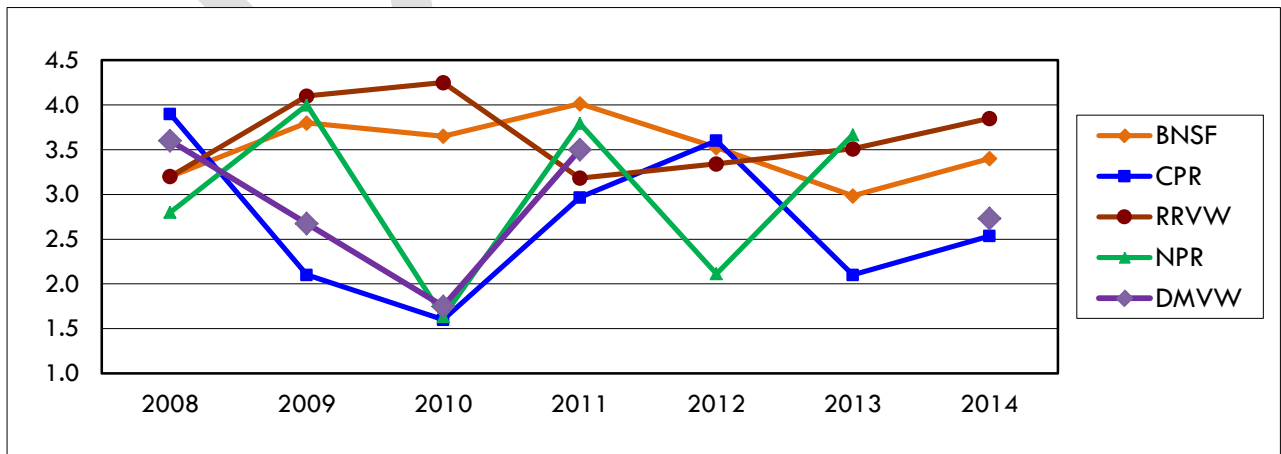
Truck Rate

Miles	2010	2011	2012	2013	2014
	\$ per mile				
1 to 25	4.04	4.48	5.63	5.89	4.44
100 to 249	3.40	2.64	2.39	3.44	3.27
250 or more	1.70	2.32	1.87	2.40	3.05



Rail Carrier Service Overall Rating Trends

(1=poor to 5=excellent)



North Dakota Elevators Transportation Activities and Service, 2015 Survey

March 2015

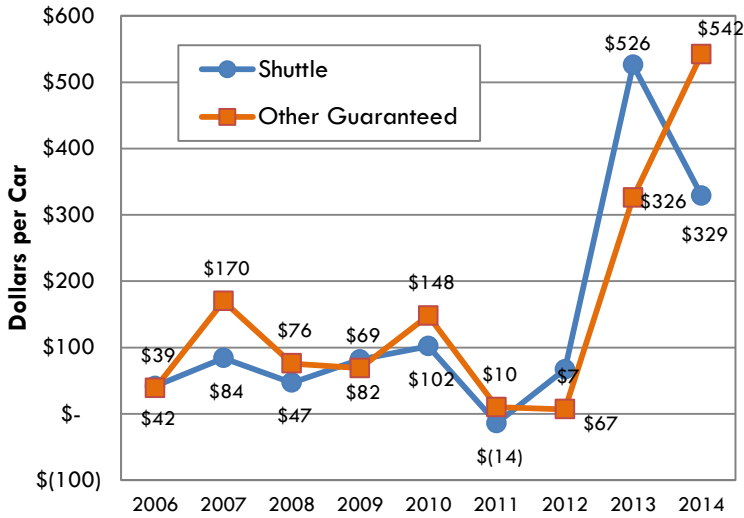
Rail Carrier Service, Current Year Service Factor Ratings <i>(weighted by rail handle)</i> <i>1=poor to 5=excellent</i>	Primary Carrier	Marketing and Sales Service	Timely Delivery of Equipment	Car Ordering Alternatives/ Process	Condition of Equipment	Availability of Order Information	Access to Marketing Personnel	Average 2014
BNSF		3.4	3.3	3.4	3.7	3.4	3.2	3.4
CPR		2.7	2.3	2.5	2.0	2.8	3.0	2.5
RRVW		3.9	3.8	3.5	3.2	4.4	4.4	3.8
DMVW		2.6	1.7	2.6	3.3	3.5	2.6	2.7
NPR								n.a.
Average		3.2	2.9	3.1	3.0	3.4	3.3	3.2

Responses Weighted by Rail Shipments; For fewer than 3 response for railroad rating not included.

RAIL PURCHASES AND DELIVERY

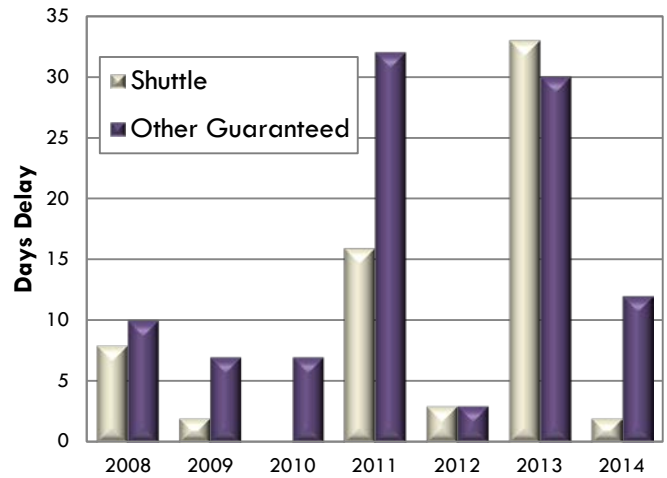
(weighted by volume shipped)

Average Rail Premiums Paid, by Market Year



Range for Rail Premiums

2014 Shuttle: \$0...\$1,000
2014 Other Guaranteed: \$0...\$2,100

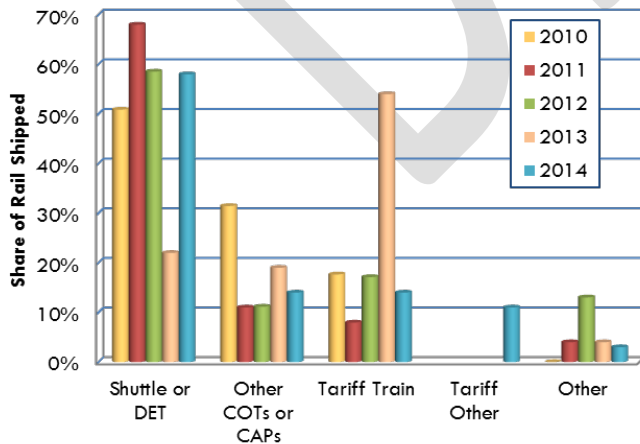


Range for Days Delay

Current Shuttle: 0...10 days
Current Other Guaranteed: 0...98 days

*Other Guaranteed Rail Freight includes COTs, DET, etc.

Rail Freight Purchases



Market Year	Share Ordered by March 15	Average premium paid for any guaranteed rail freight service purchased for next year	
		Shuttle	Other Guaranteed
\$ per car			
2009	29%	55	28
2010	49%	32	33
2011	36%	31	81
2012	6%	0	1
2013	25%	840	641
2014	43%	182	268

Funding provided by the North Dakota Wheat Commission.

Upper Great Plains Transportation Institute, North Dakota State University, is solely responsible for the content of the report, 701.231.7767, info@ugpti.org

North Dakota State University does not discriminate on the basis of age, color, disability, gender expression/identity, genetic information, marital status, national origin, public assistance status, sex, sexual orientation, status as a U.S. veteran, race or religion. Direct inquiries to the Vice President for Equity, Diversity and Global Outreach, Fargo, N.D., 205 Old Main, (701)231-7708 (ver. 2011.06).