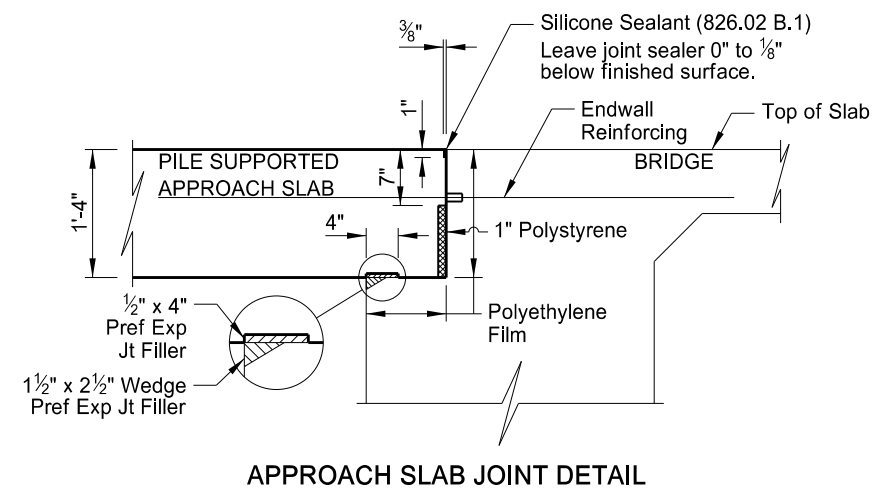


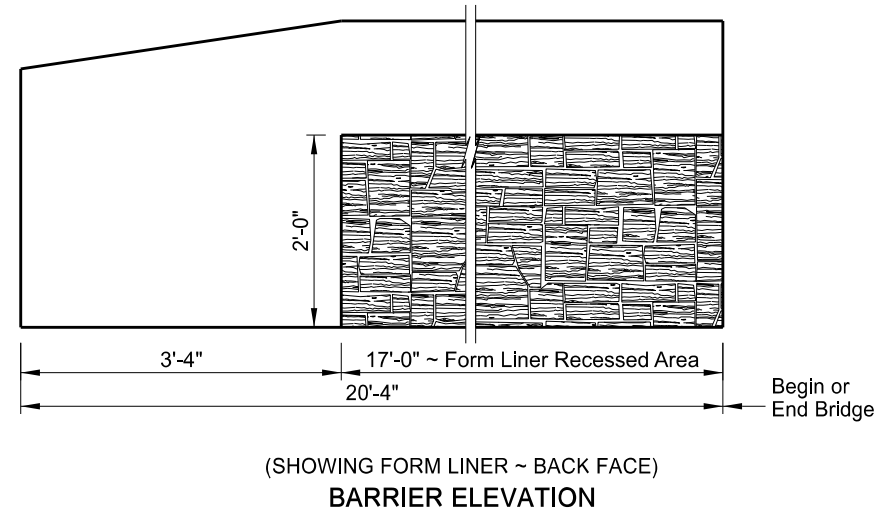
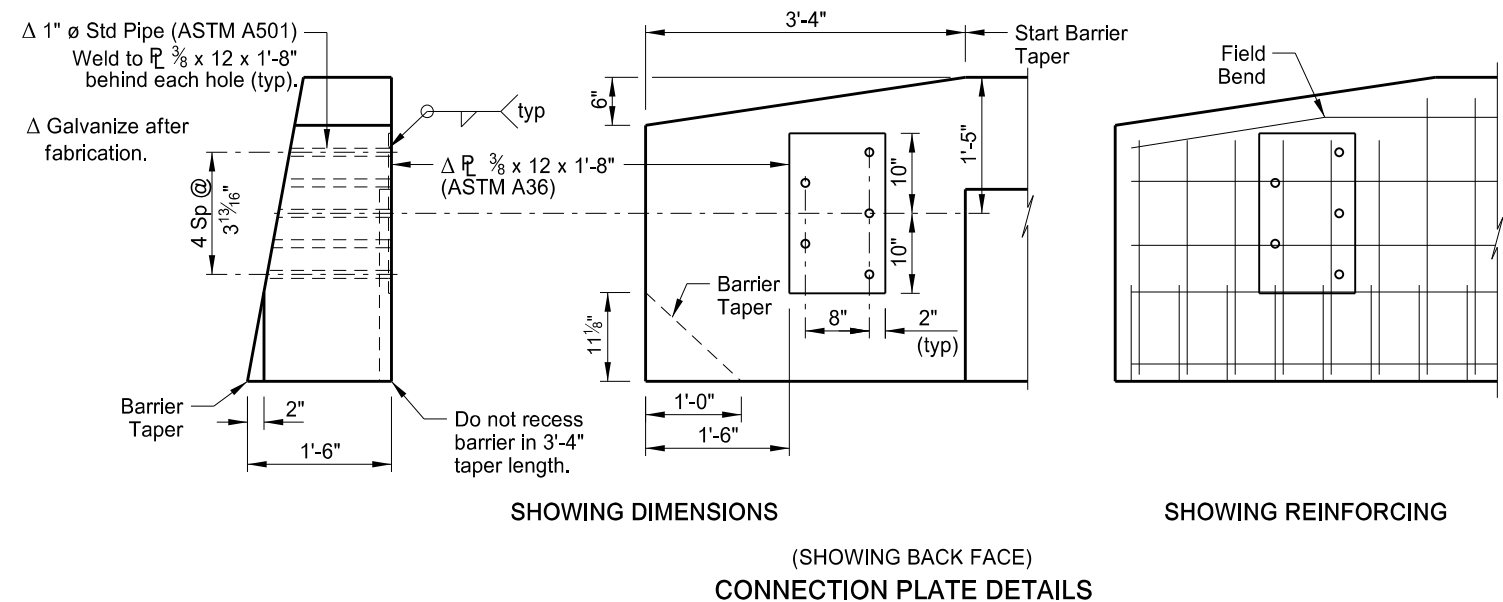
STATE	PROJECT NO.	SECTION NO.	SHEET NO.
ND	IM-2-094(186)217	170	21



**NOTES:**

The estimated material quantities shown are for information purposes only. Include the concrete, reinforcing bars, polyethylene film, preformed joint filler, polystyrene, silicone sealant, connection plates and pipes, and labor required to build the approach slabs and barriers in the Approach Slab pay item. Use concrete that meets the requirements of Section 602. Provide grade 60 reinforcing steel that meets the requirements of Section 612. Use polyethylene film that meets the requirements of ASTM C171.

ESTIMATED MATERIAL QUANTITIES		
BRIDGE SUBSTRUCTURE CONCRETE	7.4	CY
BRIDGE DECK CONCRETE	35.1	CY
BRIDGE BARRIER CONCRETE	5.8	CY
REINFORCING STEEL (EPOXY)	7,377	LBS



This drawing is preliminary and not for construction or implementation purposes.

QUANTITIES (ONE SLAB)	
APPROACH SLAB	79.1 SY
I-94/PETTIBONE INTERCHANGE	
APPROACH SLAB DETAILS	
DRAWING NO.	94-217.146-21