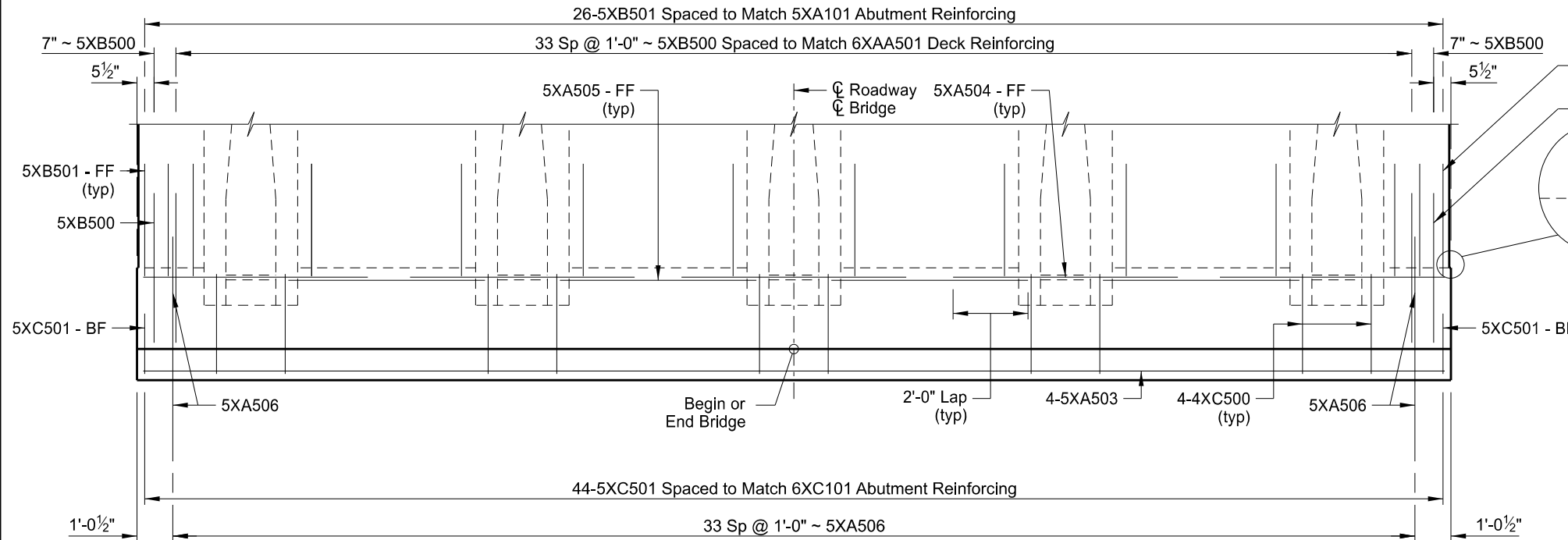
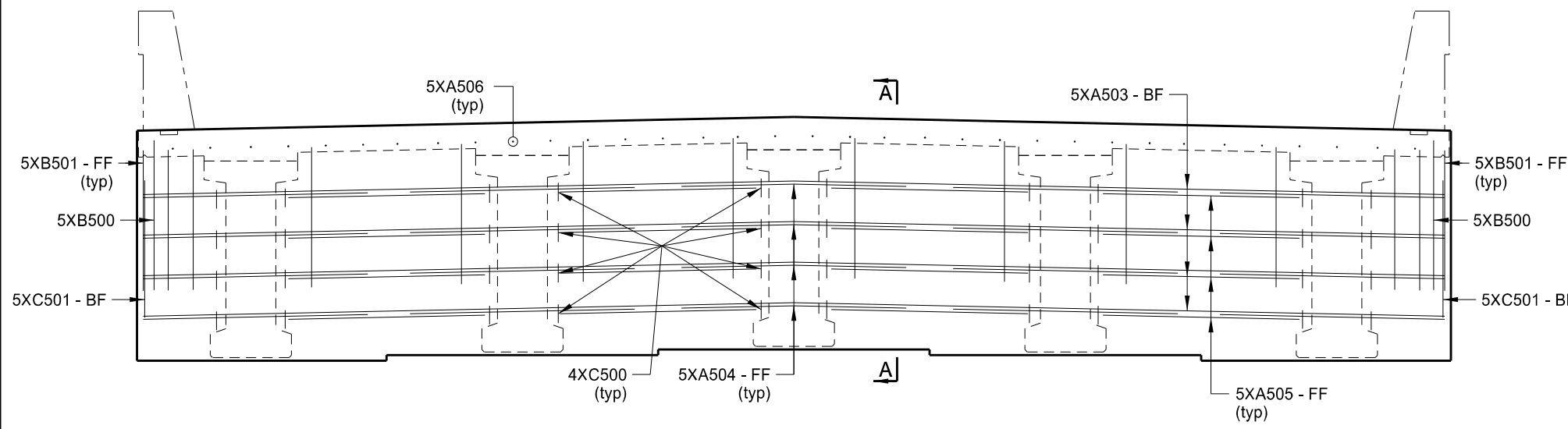


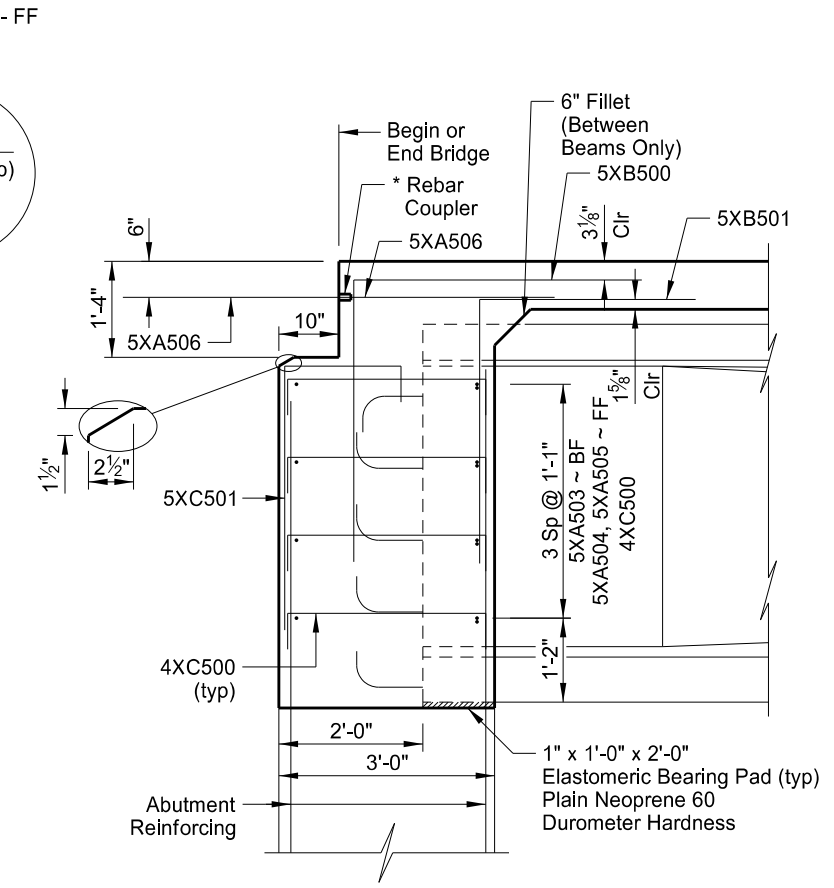
STATE	PROJECT NO.	SECTION NO.	SHEET NO.
ND	IM-2-094(186)217	170	18



PLAN



(APPROACH NOTCH NOT SHOWN)
 ELEVATION



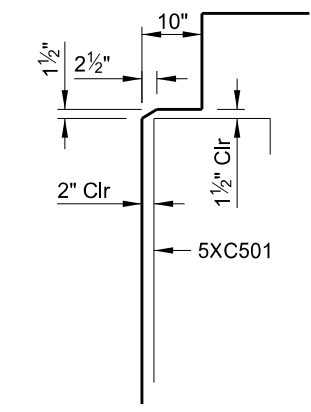
A-A

* Use mechanical connectors for the couplers capable of developing 125% of the reinforcing steel specified yield strength. Provide epoxy coated couplers according to Section 836.02 A and repair any damaged epoxy coating according to Section 612.04 E.

NOTE:

Do not install the 5XA506 bars into the approach slab until all of the foundation fill is in place.

Position the 4'-0" leg of 5XB500 bar and the 3'-0" leg of 5XB501 bar horizontal.



APPROACH NOTCH DETAIL

NOMENCLATURE:
 FF = Front Face
 BF = Back Face

This drawing is preliminary and not for construction or implementation purposes.

QUANTITIES	
SEE DWG 94-217.146-19	
I-94/PETTIBONE INTERCHANGE	
ENDWALL DETAILS	
DRAWING NO.	94-217.146-18