

| | | | |
|-------|------------------|-------------|-----------|
| STATE | PROJECT NO. | SECTION NO. | SHEET NO. |
| ND | IM-2-094(186)217 | 170 | 16 |

NOTES:

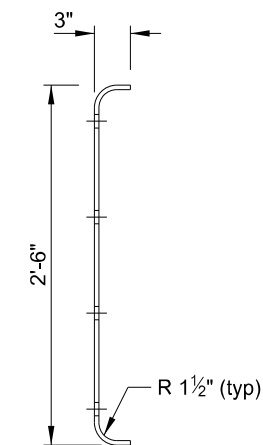
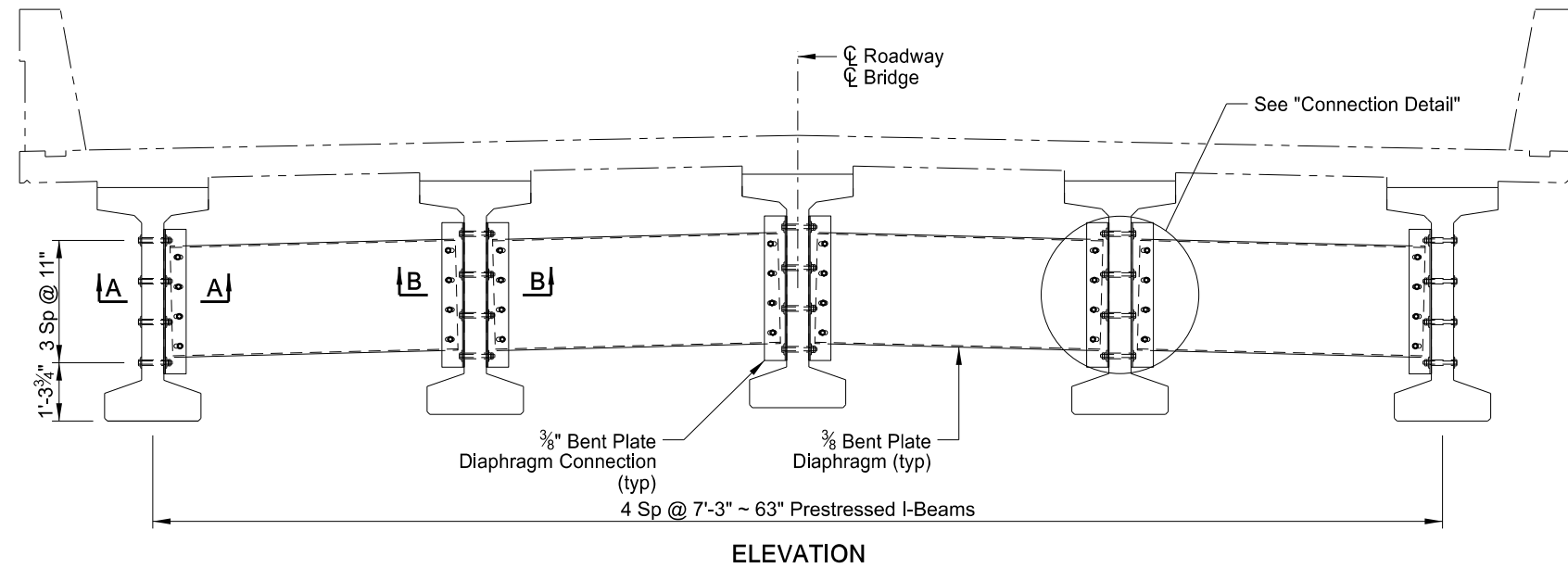
Use AASHTO M270 Grade 36 structural steel

Galvanize all structural steel and connection hardware per Section 854

$\frac{3}{8}$ " x 6" x 6" angles may be substituted for the bent plate diaphragm connection plates shown

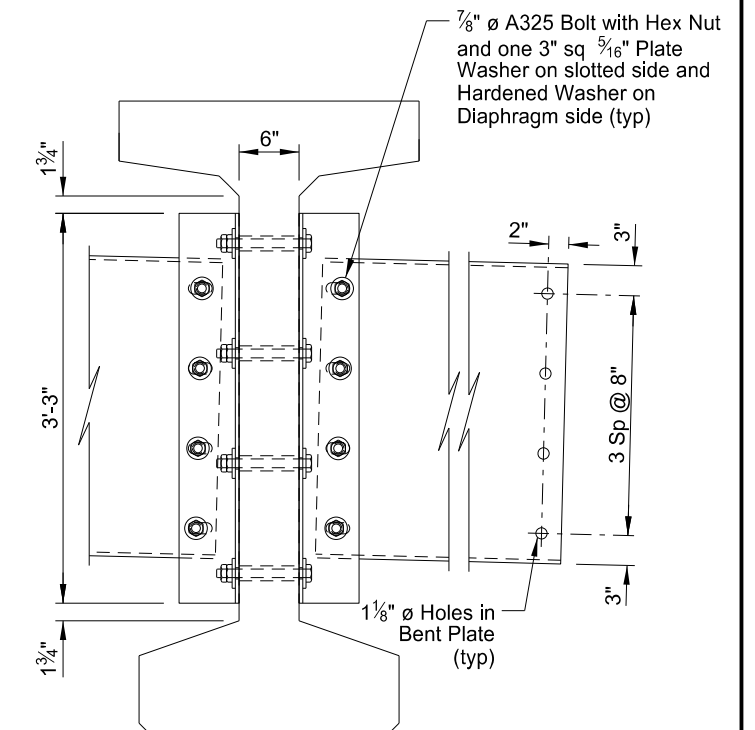
Install diaphragms between adjacent girders in conjunction with girder erection

Include all costs for furnishing, fabricating, and installing the steel diaphragm in the lump sum price bid for structural steel

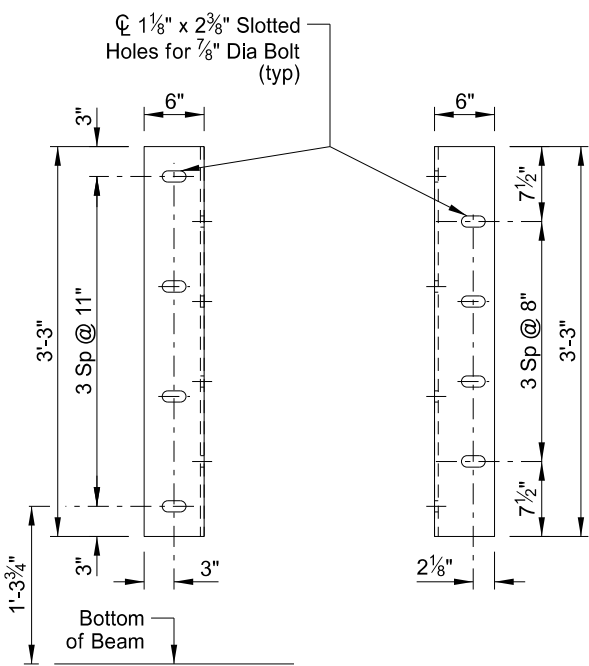


DIAPHRAGM CONNECTION
 $\frac{3}{8}$ " BENT PLATE

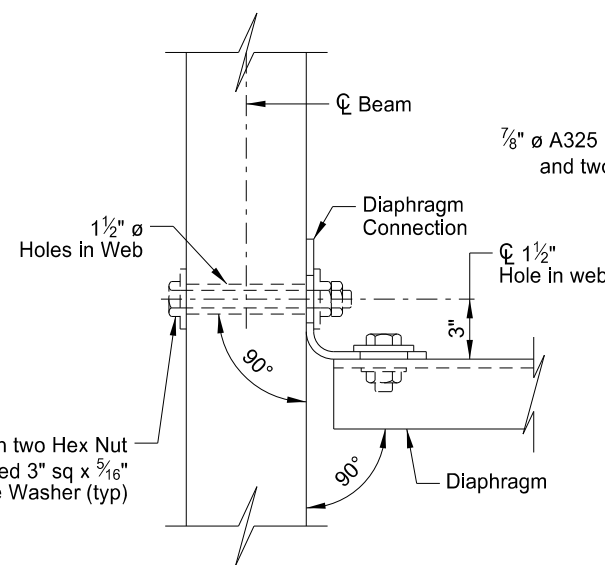
DIAPHRAGM
 $\frac{3}{8}$ " BENT PLATE



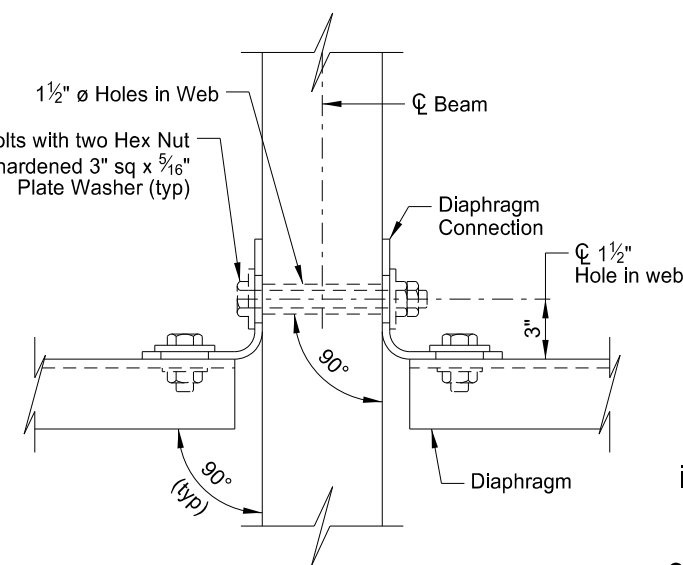
CONNECTION DETAIL



(BEAM FACE) (DIAPHRAGM FACE)
DIAPHRAGM CONNECTION
 $\frac{3}{8}$ " x 12" BENT PLATE



SECTION A-A



SECTION B-B

This drawing is preliminary and not for construction or implementation purposes.

| | |
|--------------------------------|---------------|
| I-94/PETTIBONE INTERCHANGE | |
| INTERMEDIATE DIAPHRAGM DETAILS | |
| DRAWING NO. | 94-217.146-16 |