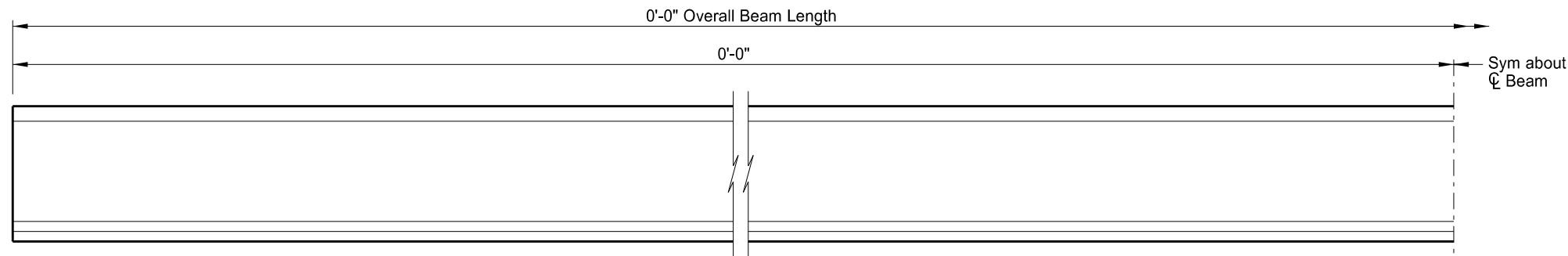
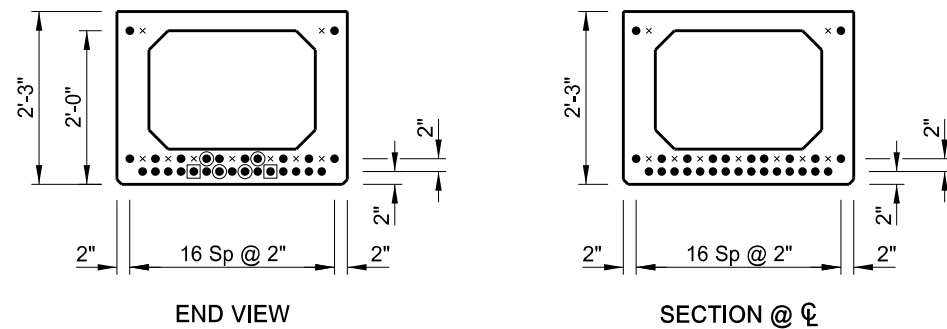


STATE	PROJECT NO.	SECTION NO.	SHEET NO.
ND	PROJECT NUMBER	SEC	PAGE

BEAM SECTION DATA		
Beam Weight = 547.9 lbs/ft + 1827 lbs		
Beam Length	0	ft
Total Beam Weight	0.9	tons
Cross Sectional Area at End	972	in ²
Cross Sectional Area at Midspan	509	in ²
C.G. from Bottom of Beam at Midspan	12.36	in
Midspan Moment of Inertia (I)	45,183	in ⁴
Midspan Section Modulus (S _b)	3,656	in ³
MINIMUM CONCRETE COMPRESSIVE STRENGTH		
Detensioning Strength (f _{ci})	7.0	ksi
Acceptance Strength (f' _c)	7.0	ksi
PRESTRESSING STRAND DATA		
0.6" Diameter Grade 270 Prestressing Strands		
Initial Prestress = 0.75 * f _{pu}		
	Number	Y Distance (inches)
		Midspan End
Straight Strands	28	3.86 3.86
Draped Strands	8	5.00 57.00
Total Strands	36	4.11 15.67
PRESTRESS LOSSES		
Elastic Shortening Loss	0.00	ksi
Long Term Losses	0.00	ksi
Total Losses	0.00	ksi
PRESTRESS FORCES		
Initial Prestress Force	1,581.9	kips
Final Prestress Force after Losses	1,581.9	kips
ESTIMATED CAMBER		
Midspan Camber at Strand Release	0.00	inches



BEAM ELEVATION



END VIEW

SECTION @ ϕ

PRESTRESSING STRAND LAYOUT

KEY:

- × Vacant Strand Location
 - Filled Strand Location (Bonded)
 - ⊙ Filled Strand Location (Debonded X'-X" Each End)
 - Filled Strand Location (Debonded X'-X" Each End)
- ↑ or ↓ Indicates Locations of Draped Strands

This drawing is preliminary and not for construction or implementation purposes.

LOCATION	
0'-0" BEAM LENGTH	
PRE-TENSIONED 27" x 36" PRESTRESSED SPREAD BOX BEAM	
DRAWING NO.	BN-page

D-D