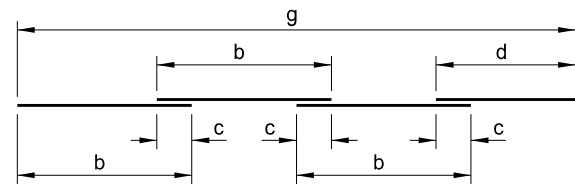


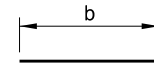
STATE	PROJECT NO.	SECTION NO.	SHEET NO.
ND	SS-5-085(086)012	170	27

23 U.S.C. § 407 Documents
NDDOT Reserves All Objections

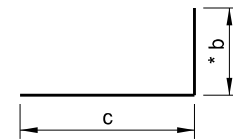


c = Lap Splice (typ)
e = # of "b" Length Pieces in a Set
Total Length per Set = e x b + d

AA

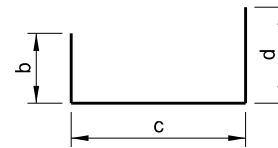


A

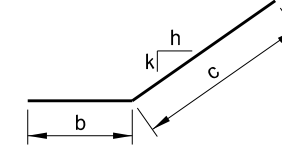


B

* b = Vertical Leg for
XB500 and XB501



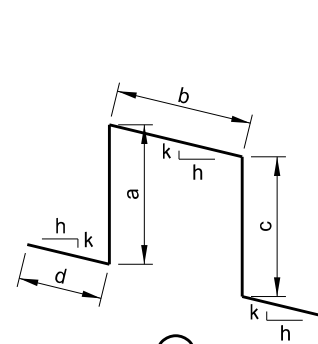
C



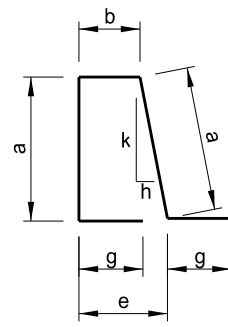
D

NOTES:

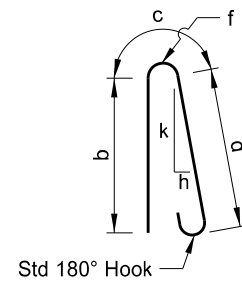
1. Verify the quantity, size, and shape of the bar reinforcement against the structure drawings and immediately notify the Engineer of any discrepancies. Discrepancies in the bar list will not be cause for adjustment of the contract unit price.
2. All dimensions are out to out of bars.
3. Nominal length of each bent bar or cut bar is the sum total of the detailing dimensions for that bar, unless otherwise noted.
4. Turn adjacent "AA" bars end for end so that the splice locations are staggered.
5. The "f" dimension indicates the inside radius unless otherwise noted.
6. An "X" preceding a bar designation indicates an epoxy coated bar.
7. Reinforcing steel bid items do not include bar list quantity of approach slab reinforcing steel. Include the approach slab bar list quantity in the approach slab pay items.



G

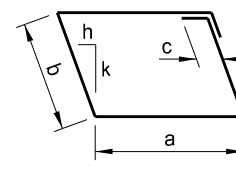


K

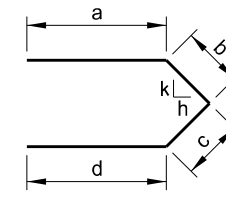


Std 180° Hook

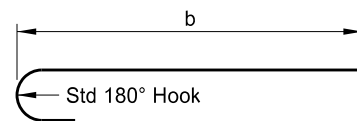
ML



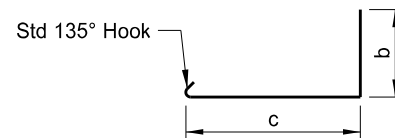
N



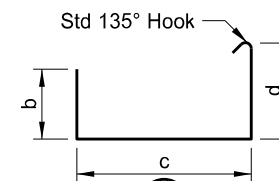
M



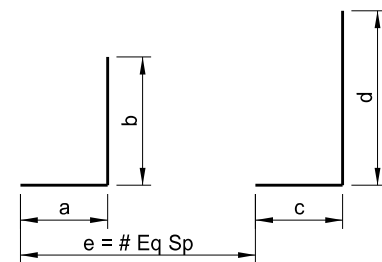
MA



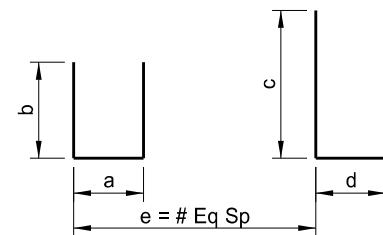
MB



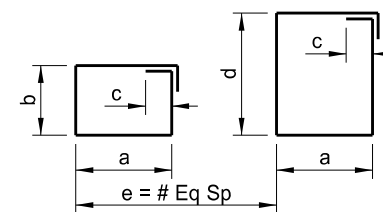
MC



SB



SC



SN

This drawing
is preliminary
and not for
construction or
implementation
purposes.

SPRING CREEK 4 SOUTH OF JCT US 12	
REINFORCING BAR LIST	
DRAWING NO.	85-012.747-27