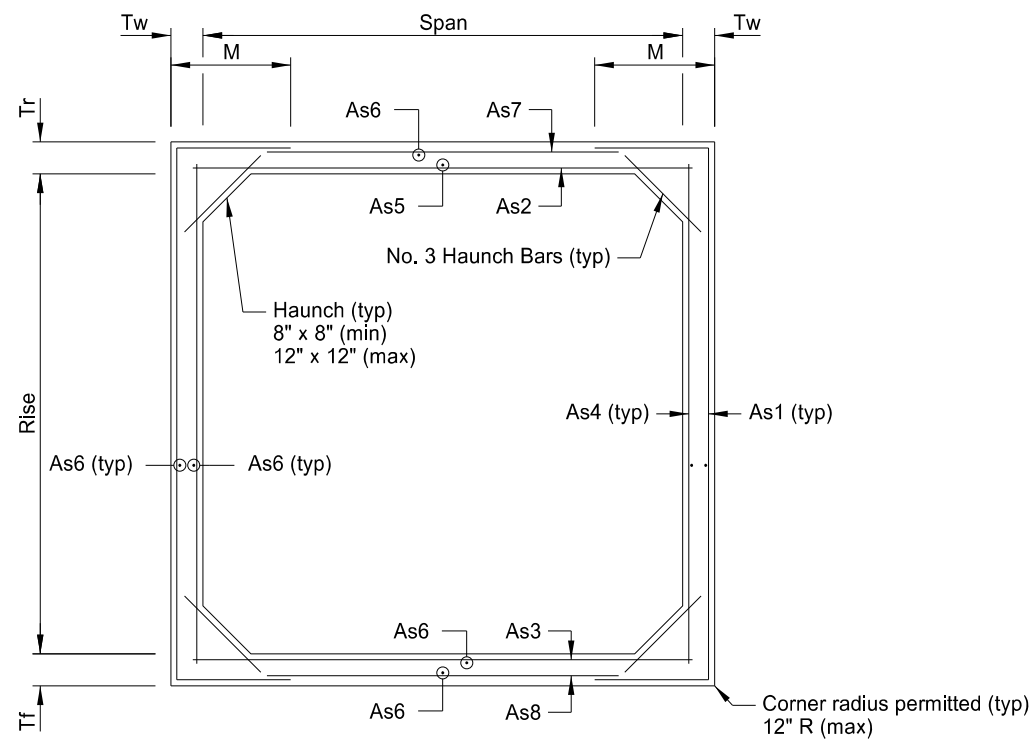
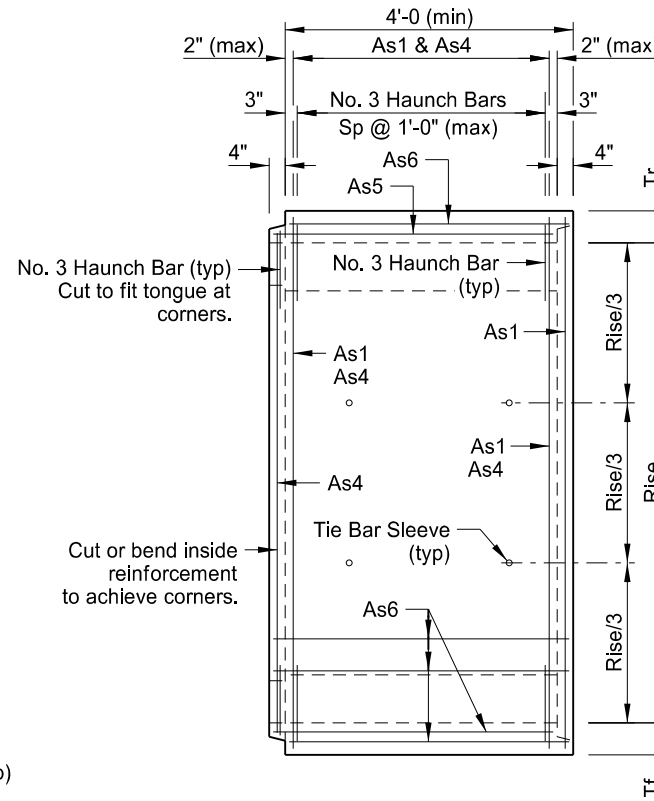


STATE	PROJECT NO.	SECTION NO.	SHEET NO.
ND	SS-6-032(075)230	170	4



TRANSVERSE BARREL SECTION



LONGITUDINAL BARREL SECTION

NOTES:

Provide Grade 65 welded wire reinforcement conforming to AASHTO M 336. The maximum wire size per layer is D25 or W25. Provide a maximum of 2 layers of welded wire reinforcement. If 2 layers of welded wire reinforcement are used to obtain the required area of reinforcement, place the layers as shown in the "Reinforcement Layer Detail."

Provide Grade 60 reinforcement meeting Section 612 for any bar reinforcement incorporated into the structure. Do not exceed size 6 bar reinforcement within the structure.

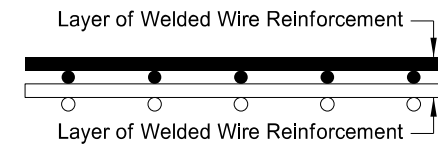
Provide 1½" minimum concrete cover on all reinforcement except for as detailed in the "Tongue and Groove Joint Detail."

If bar reinforcement is substituted for welded wire reinforcement, increase the area of reinforcement by 8% and submit design calculations verifying compliance with AASHTO 5.7.3.4 "Control of Cracking by Distribution Reinforcement."

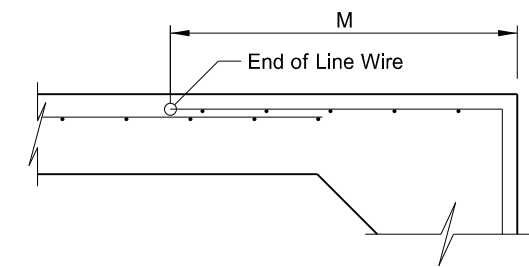
Develop reinforcement in accordance with AASHTO LRFD Bridge Design Specifications.

Space transverse wires not greater than 4" nor less than 2" measured center to center. Space longitudinal wires not greater than 8" nor less than 4" measured center to center.

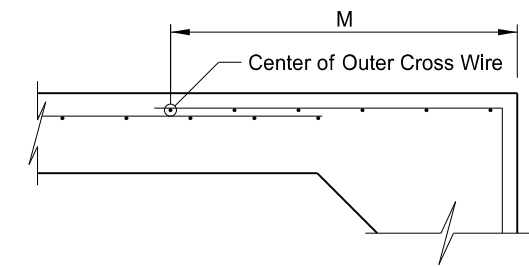
The M dimension shown is designated to the end of line wire for deformed welded wire reinforcement and to the center of the outermost cross wire for plain welded wire reinforcement. Adjust the length of As1 steel provided to ensure the minimum M dimension is provided. See details on this sheet.



REINFORCEMENT LAYER DETAIL



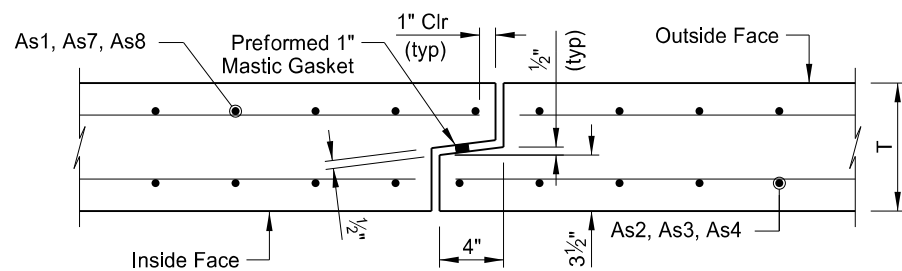
M DIMENSION FOR DEFORMED WIRE



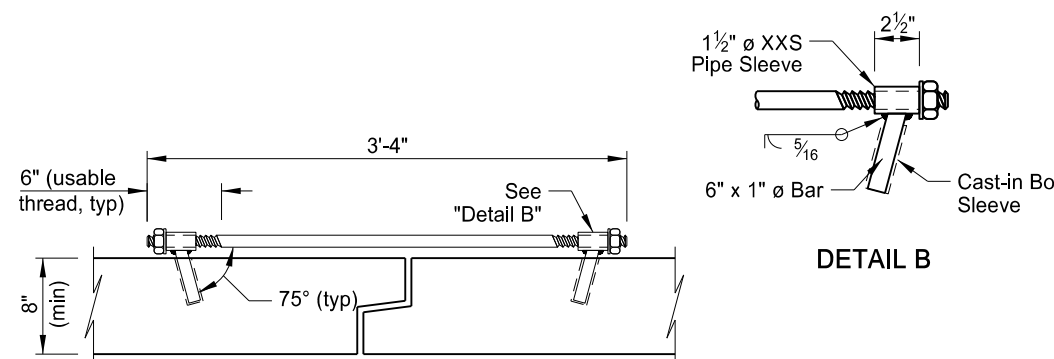
M DIMENSION FOR PLAIN WIRE

BARREL INFORMATION TABLE																						
STRENGTH f'_c (KSI)	FILL HEIGHT RANGE (FT)	DIMENSIONS					WEIGHT (LBS/FT)	WELDED WIRE REINFORCEMENT														
		SPAN	RISE	T_r	T_f	T_w		As1		As2		As3		As4		As5	As6	As7		As8		
								AREA (IN ² /FT)	LENGTH	M	AREA (IN ² /FT)	LENGTH	AREA (IN ² /FT)	LENGTH	AREA (IN ² /FT)	LENGTH	AREA (IN ² /FT)	LENGTH	AREA (IN ² /FT)	LENGTH	AREA (IN ² /FT)	LENGTH
5.00	4-7	14'-0"	7'-0"	9"	9"	8"	5150	0.870	14'-4"	3'-2"	0.990	14'-6"	1.020	14'-6"	0.225	7'-6"	0.060	0.060	0.225	12'-0"	0.225	12'-0"

The information provided in the Barrel Information Table assumes square corners, 12" x 12" haunches, and concrete density of 150 pcf.



TONGUE AND GROOVE JOINT DETAIL



HIDDEN TIE BAR DETAIL

This drawing is preliminary and not for construction or implementation purposes.

CREEK
BARREL SECTION & REINFORCING STEEL TABLE
DRAWING NO. 32-234.484-4