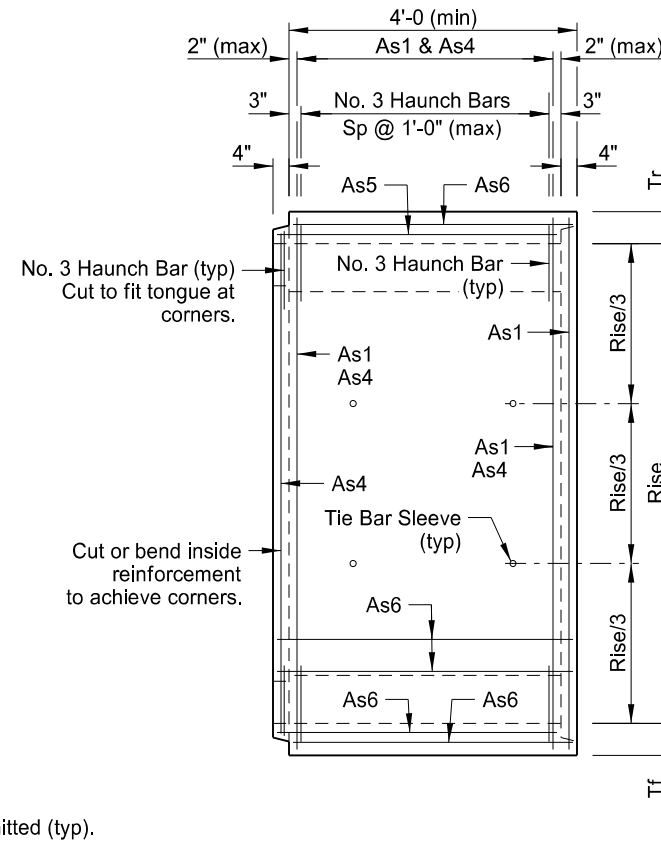
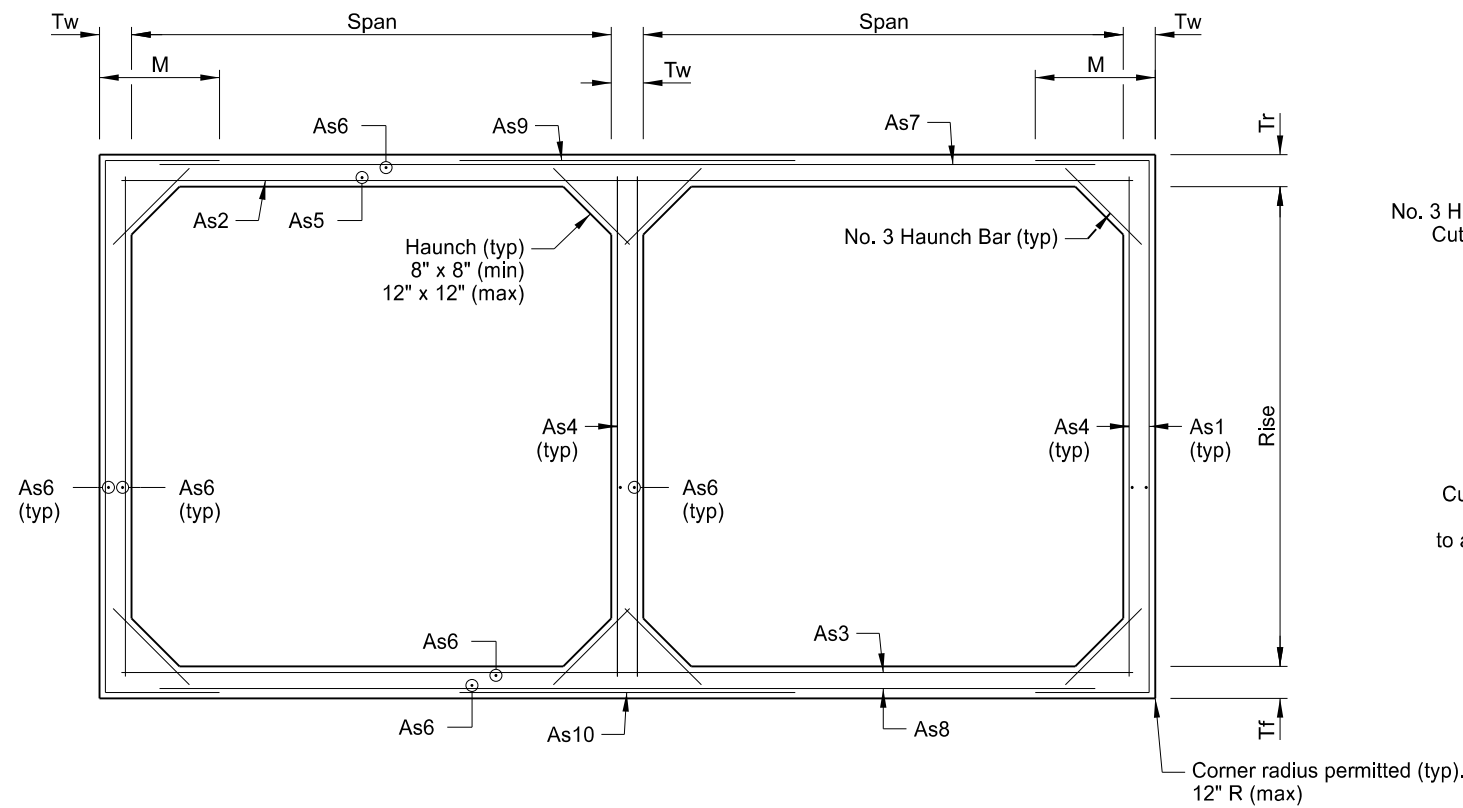


STATE	PROJECT NO.	SECTION NO.	SHEET NO.
ND	NH-5-200(035)102	170	4



NOTES:

Provide Grade 65 welded wire reinforcement conforming to AASHTO M 336. The maximum wire size per layer is D25 or W25. Provide a maximum of 2 layers of welded wire reinforcement. If 2 layers of welded wire reinforcement are used to obtain the required area of reinforcement, place the layers as shown in the "Reinforcement Layer Detail."

Provide Grade 60 reinforcement meeting Section 612 for any bar reinforcement incorporated into the structure. Do not exceed size 6 bar reinforcement within the structure.

Provide 1/2" minimum concrete cover on all reinforcement except for as detailed in the "Tongue and Groove Joint Detail."

If bar reinforcement is substituted for welded wire reinforcement, increase the area of reinforcement by 8% and submit design calculations verifying compliance with AASHTO 5.7.3.4 "Control of Cracking by Distribution Reinforcement."

Develop reinforcement in accordance with AASHTO LRFD Bridge Design Specifications.

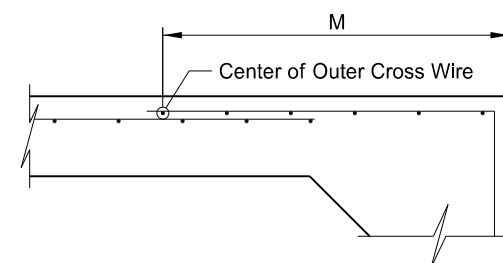
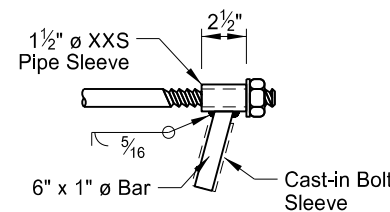
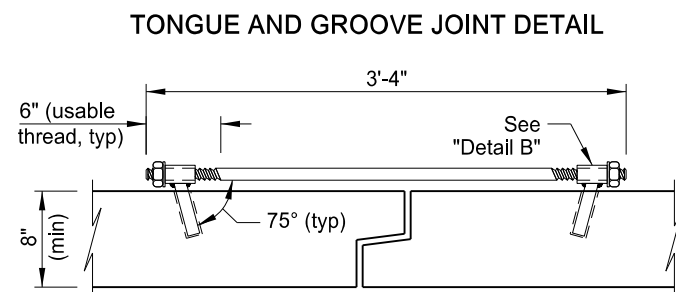
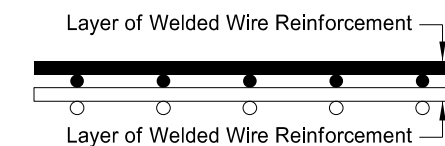
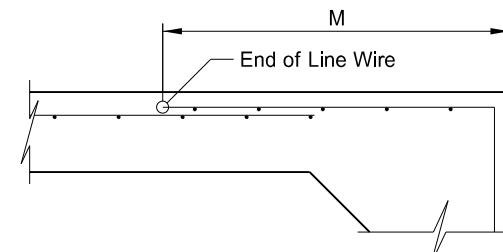
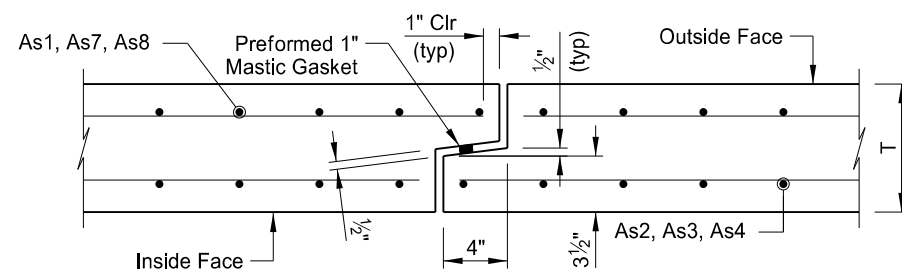
Space transverse wires not greater than 4" nor less than 2" measured center to center. Space longitudinal wires not greater than 8" nor less than 4" measured center to center.

The M dimension shown is designated to the end of line wire for deformed welded wire reinforcement and to the center of the outermost cross wire for plain welded wire reinforcement. Adjust the length of As1 steel provided to ensure the minimum M dimension is provided. See details on this sheet.

The information provided in the "Barrel Information Table" assumes square corners, 12" x 12" haunches, and concrete density of 150 pcf.

BARREL INFORMATION TABLE

STRENGTH f _c (KSI)	FILL HEIGHT (FT)	DIMENSIONS					WEIGHT (LBS/FT)	WELDED WIRE REINFORCEMENT																			
		SPAN	RISE	Tr	Tf	Tw		As1		As2		As3		As4		As5		As6		As7		As8		As9		As10	
								AREA (IN ² /FT)	LENGTH	M	AREA (IN ² /FT)	LENGTH	AREA (IN ² /FT)	LENGTH	AREA (IN ² /FT)	LENGTH	AREA (IN ² /FT)	AREA (IN ² /FT)	AREA (IN ² /FT)	LENGTH	AREA (IN ² /FT)	LENGTH	AREA (IN ² /FT)	LENGTH	AREA (IN ² /FT)	LENGTH	AREA (IN ² /FT)
6	18	12'-0"	10'-0"	1'-1"	1'-1"	8"	12050	0.510	16'-8"	2'-6"	0.720	25'-2"	0.780	25'-2"	0.315	10'-6"	0.060	0.060	0.390	24'-0"	0.435	24'-0"	0.390	7'-8"	0.435	7'-8"	



This drawing is preliminary and not for construction or implementation purposes.

CREEK 5 EAST OF SOUTH JCT ND 8	
BARREL SECTION & REINFORCING STEEL TABLE	
DRAWING NO.	200-121.473-4