



**National  
Transportation  
Safety Board**

# Truck and Bus Safety CY 2015

Rob Molloy  
Deputy Director,  
Office of Highway Safety

# NTSB Activities 2014-2015

- Completed Investigations
- Most Wanted List
- On-Going Investigations
- Other projects

# Mount Vernon, WA

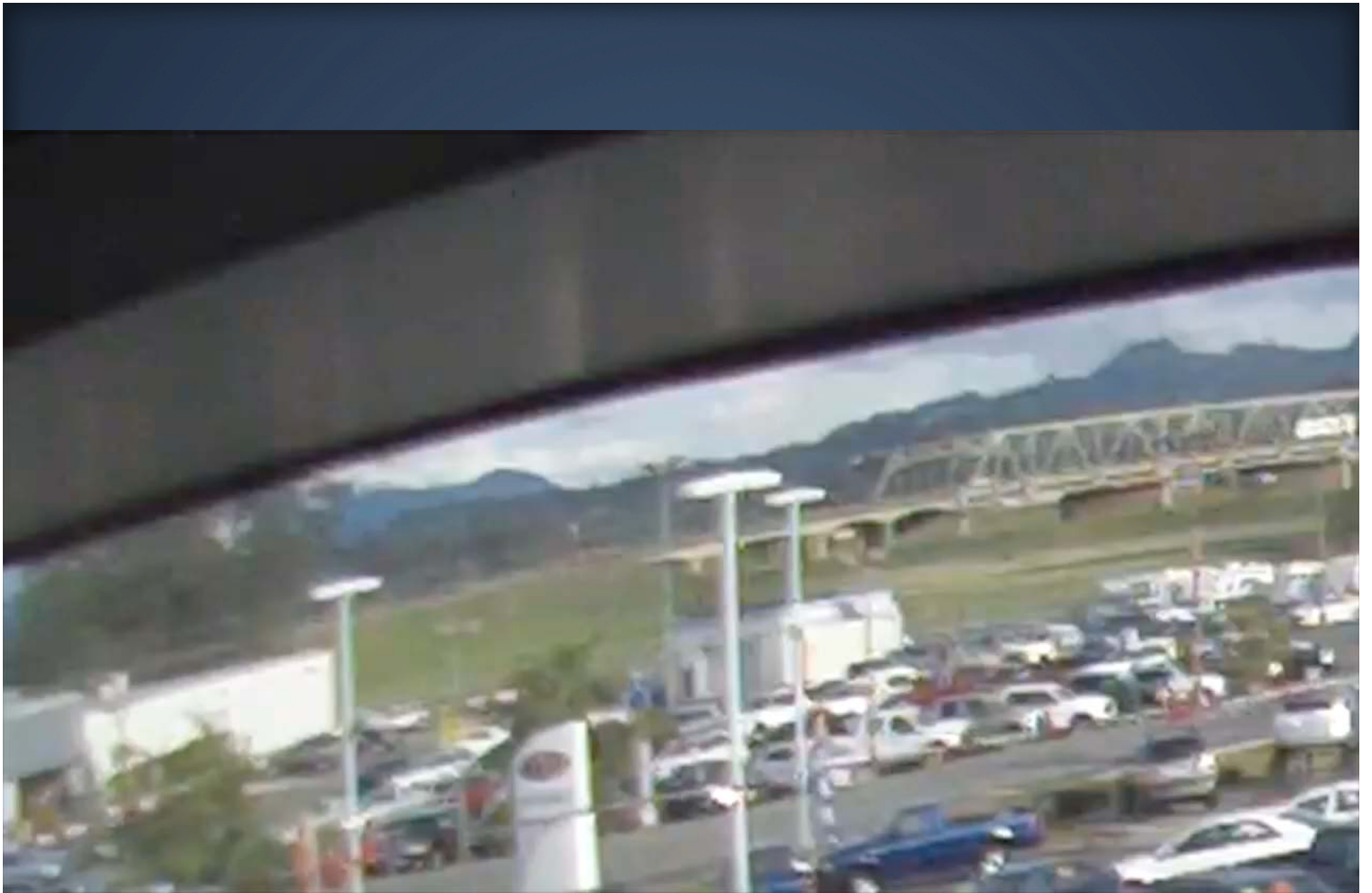
- Bridge collapse
  - May 23, 2013
  - Interstate 5 over Skagit River
  - Oversize truck struck bridge
- Safety systems in place
  - Systems error

# Oversized Load





NTSB



NTSB

# Mount Vernon Safety Issues

- Permitting & route surveys
- Pilot/escort vehicle operations
- Commercial driver operations
- State practices for bridge strikes
- Low-clearance signage

## Rosedale, MD, May 28, 2013

- Private railroad crossing
- Passive warning signs
- Mack truck travelling 10 mph
- Freight train traveling 49 mph
- Derailment and explosion



# Accident Sequence of Events

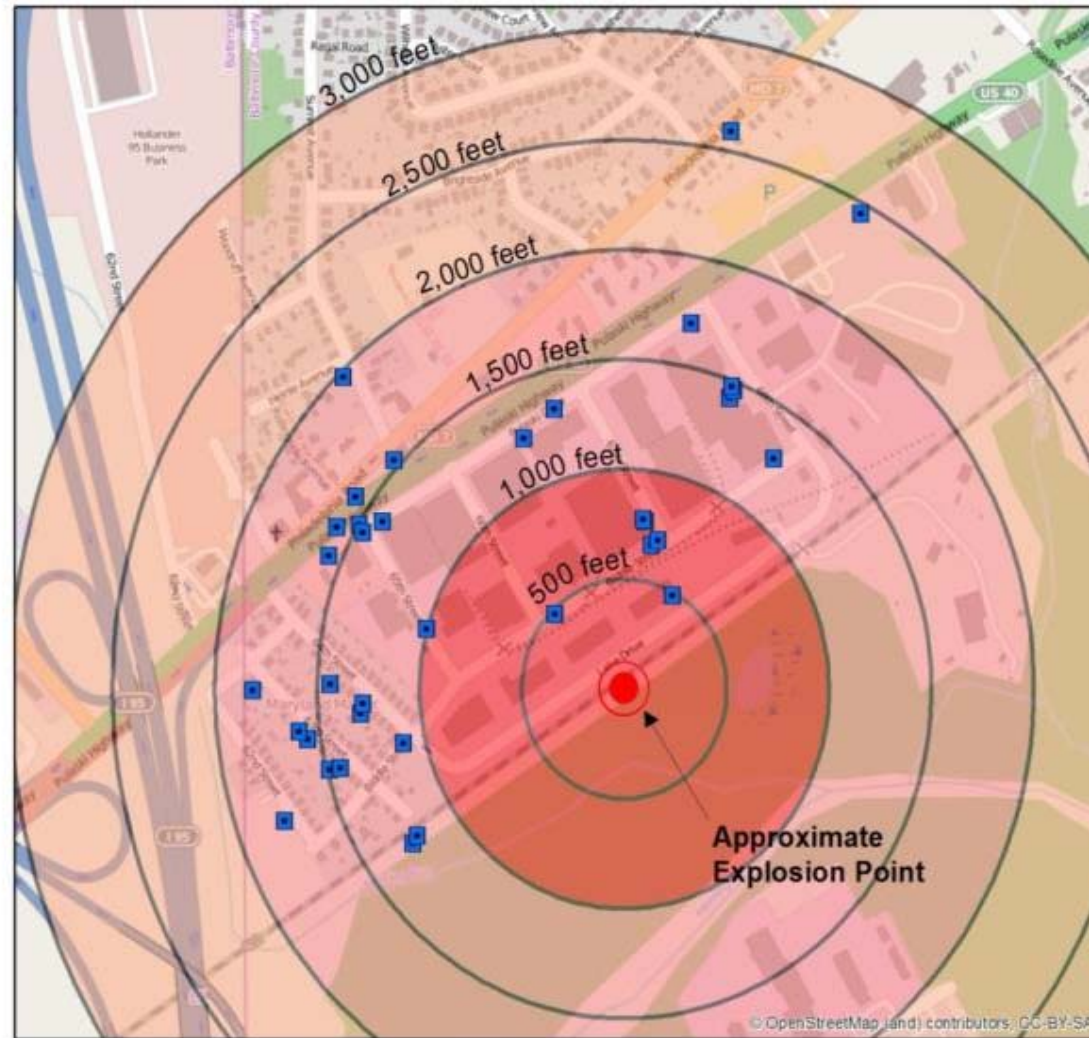


# Rosedale Derailment



NTSB

# Post Accident Explosion and Injuries



NTSB No: HWY-13-MH-013  
Date: 5-28-2013  
Location: Rosedale, Maryland

NTSB

# Safety Issues

- Responsibilities at Grade Crossings
- Hands-Free Cell Phone Use
- Safety at Private Grade Crossings
- FMCSA Oversight

# Highway Most Wanted List 2015

- Reduce Impaired Driving
- Reduce Distracted Driving
- Improve Safety in Mass Transit
- Improve Medical Certification
- Improve Trucking Safety

# 2014 Investigations



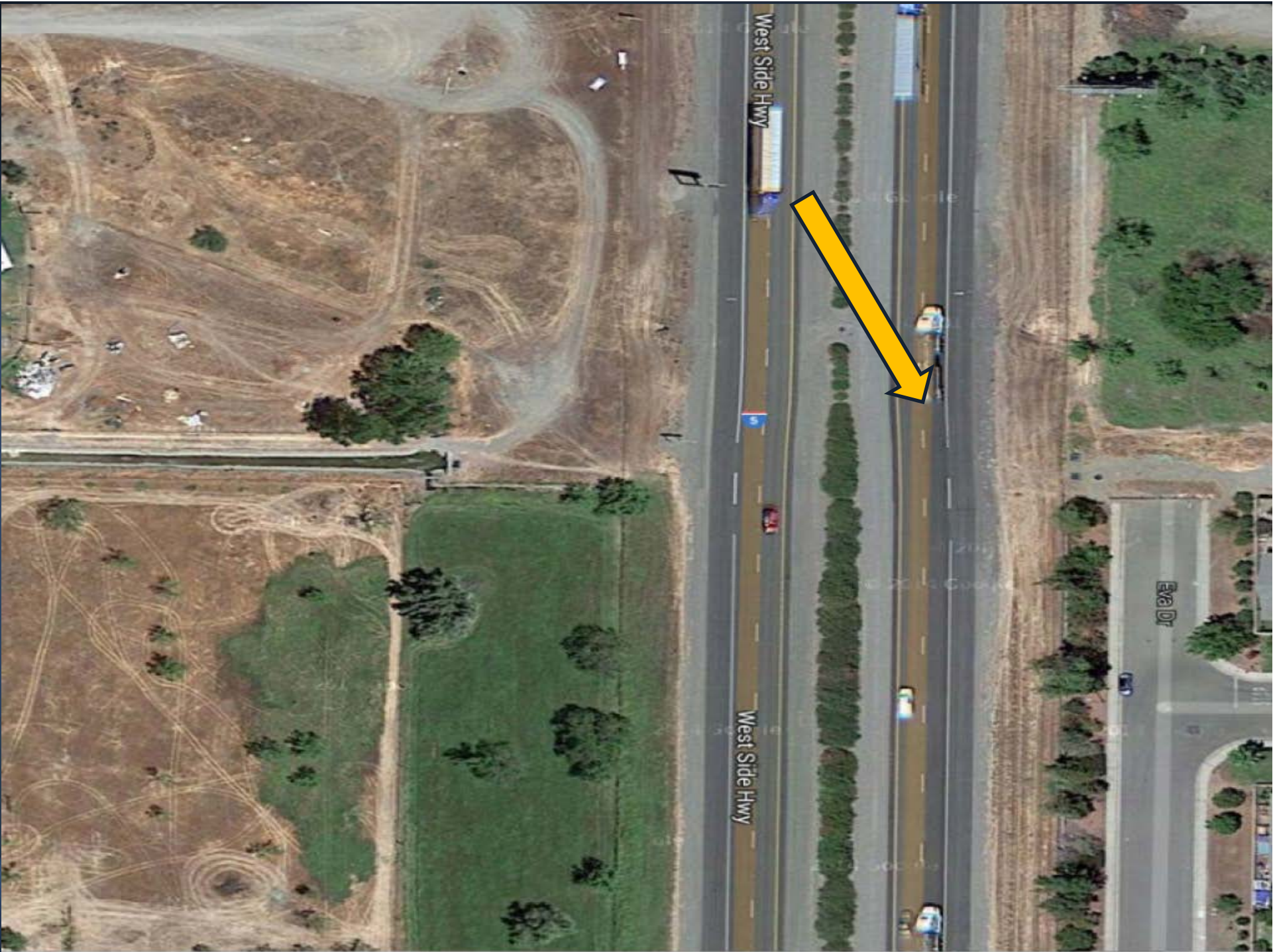
# Orland CA, April 10, 2014



- 2014 Setra
- 53-year-old driver
- 3 chaperones, 42 students
- Northbound on I-5



- 2007 Volvo truck tractor
- 2 28-ft trailers
- 32-year-old driver
- Southbound on I-5







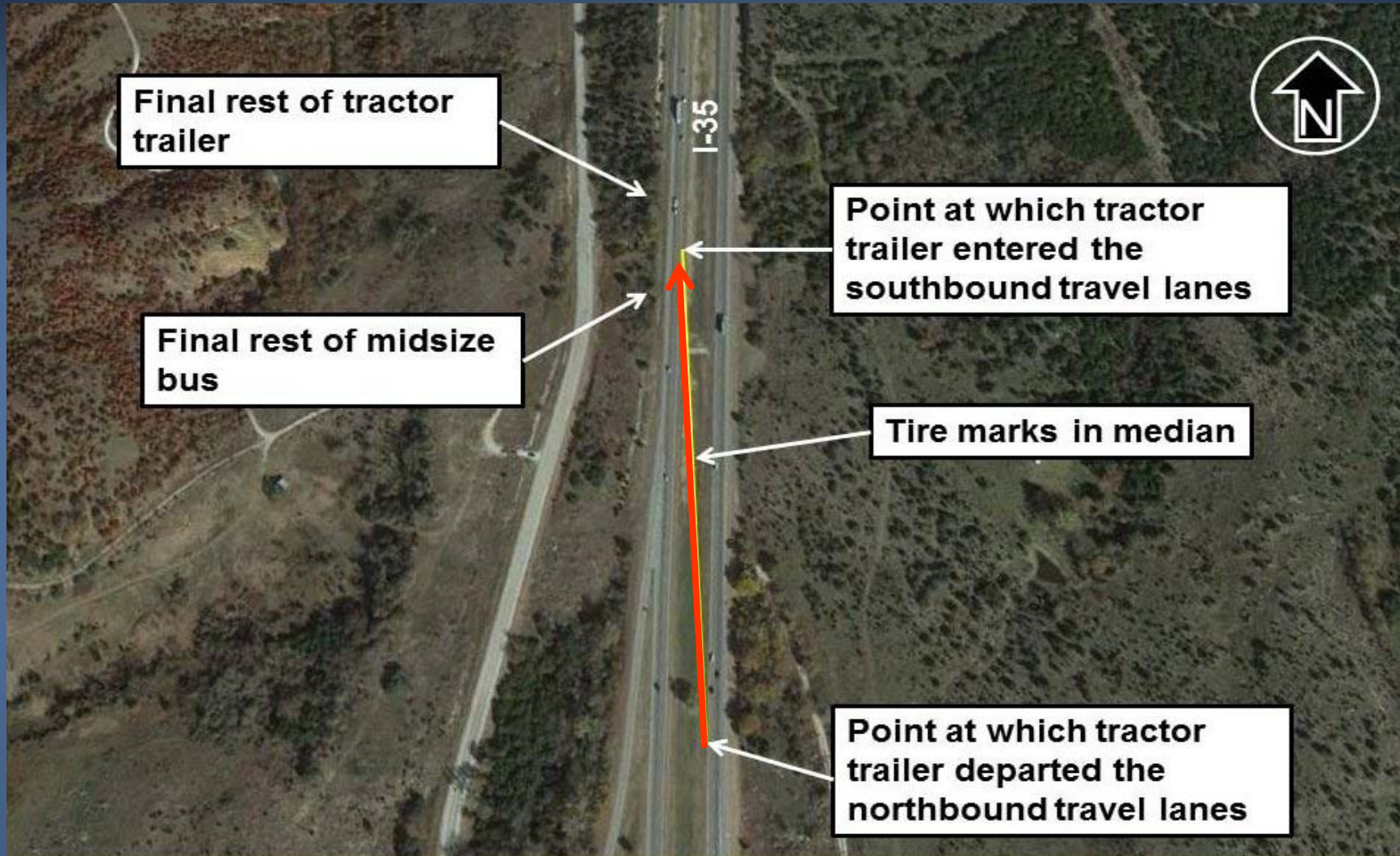
# Issues Being Explored

- Median crossover crashes
- FedEx driver
- Event Data Recorders
- Pre-trip safety briefings, seatbelt use
- Motorcoach emergency egress
- Motorcoach flammability

# Davis, OK Overview

- Friday, Sep 26, 2014 @ 9:05 p.m.
- Interstate 35 (I-35) in Oklahoma
- 2013 Peterbilt Combination Unit
- 2008 Champion Medium-size Bus
- 2 drivers, 15 passengers
- 4 fatalities

# Davis, OK



# Post-crash Travel of the Truck



# 2008 Chevrolet Champion Bus



# Issues Being Explored

- ⚠️ Cross-over median crashes
- ⚠️ Median barrier use
- ⚠️ Medium-size bus construction
- ⚠️ Pre-trip briefings
- ⚠️ Truck driver 72-hr history (drug use)

# Cranbury, NJ Overview

- Saturday, June 7, 2014 @ 1:00 a.m.
- New Jersey Turnpike (I-95)
- 2011 Peterbilt with a semitrailer
- 2012 Mercedes Limo Van
- 6 drivers, 21 passengers
- 1 fatality



# 2011 Peterbilt Combo Vehicle



# 3D Scanner Documentation



# Issues Being Explored

- Fatigue
- Work zone safety
- Truck speed
- Restraint Usage
- Forward Collision Warning System
- Limo Van Construction - Modifications

# Other 2015 NTSB Truck /Bus Projects

- Special Investigative Reports
  - Bus onboard videos
  - Rear end collision prevention



# National Transportation Safety Board