

NIOSH Trucking Research

Jan Birdsey, MPH

Stephanie Pratt, MM, MA

Karl Sieber, PhD

**National Institute for
Occupational Safety and Health**



**Transportation Research Board 88th Annual Meeting
January 2009**



NIOSH

Dept of Health & Human Services



Centers for Disease Control & Prevention



**National Institute for Occupational Safety
and Health**

Disease Mortality

Truck drivers are also at increased risk for:

- ✱ Heart disease
- ✱ High blood pressure
- ✱ Lung cancer
- ✱ Prostate cancer
- ✱ Bladder cancer
- ✱ Stomach cancer



Occupation ...



or Lifestyle?





Truck Driver Occupational Safety and Health

2003 Conference Report and
Selective Literature Review



DEPARTMENT OF HEALTH AND HUMAN SERVICES
Division of Research and Statistics
National Institute for Occupational Safety and Health

NIOSH

- Publication 2007-120

- Order form at:

<http://wwwn.cdc.gov/pubs/niosh.aspx>

- Electronic version
(without CD content) at:

<http://www.cdc.gov/niosh/docs/2007-120/>

NIOSH Research Projects in Trucking

- ◆ Mortality study of independent owner-operator truck drivers (2004-2008)
- ◆ Survey of truck driver safety and health (2007-2010)
- ◆ Survey of truck driver anthropometry and work space (2007-2010)
- ◆ Research grants:
 - Screening for sleep apnea
 - Large truck ingress/egress
 - Health, injury, and MSDs



Mortality Among Independent Owner-operator Truck Drivers

Aims



- Identify common causes of death
- Identify causes of death that are elevated compared to the general US population.
- Use this information to recommend strategies for intervention, prevention, and education programs.

Mortality Among Independent Owner-operator Truck Drivers

- Study period 9/29/1989-12/31/2004
- Cohort = 156,241 members
- Hypothesis generating
 - No occupational history
 - Individual risk factors unknown
- Median follow up time = 6 years
- Methods and results undergoing final review

Mortality Among Independent Owner-operator Truck Drivers

- *Project contact:* Toni Alterman, Ph.D.
Division of Surveillance, Hazard
Evaluations, and Field Studies
(513) 841-4428



Truck Driver Safety and Health Survey

Aims



- ❖ Provide point prevalence estimates for health conditions, risk factors, and injury among long-haul truck drivers
- ❖ Examine associations among factors such as health, injury, fatigue, hours of work, and sleep

Survey Methods

- ❖ Intercept study of long-haul truck drivers stopping at truck stops or other locations
- ❖ Cross sectional study design
- ❖ Interview locations stratified into 5 geographic regions
- ❖ Number of truck stops selected in each region proportional to traffic load within that region.



Survey Status

- Questionnaire development nearing completion
 - Incorporating information obtained from cognitive interviews
- 2009 – finalize survey protocol and conduct pilot tests, OMB approval process
- 2010 – data collection

Truck Driver Safety and Health Survey

Project contract:

Karl Sieber, Ph.D.

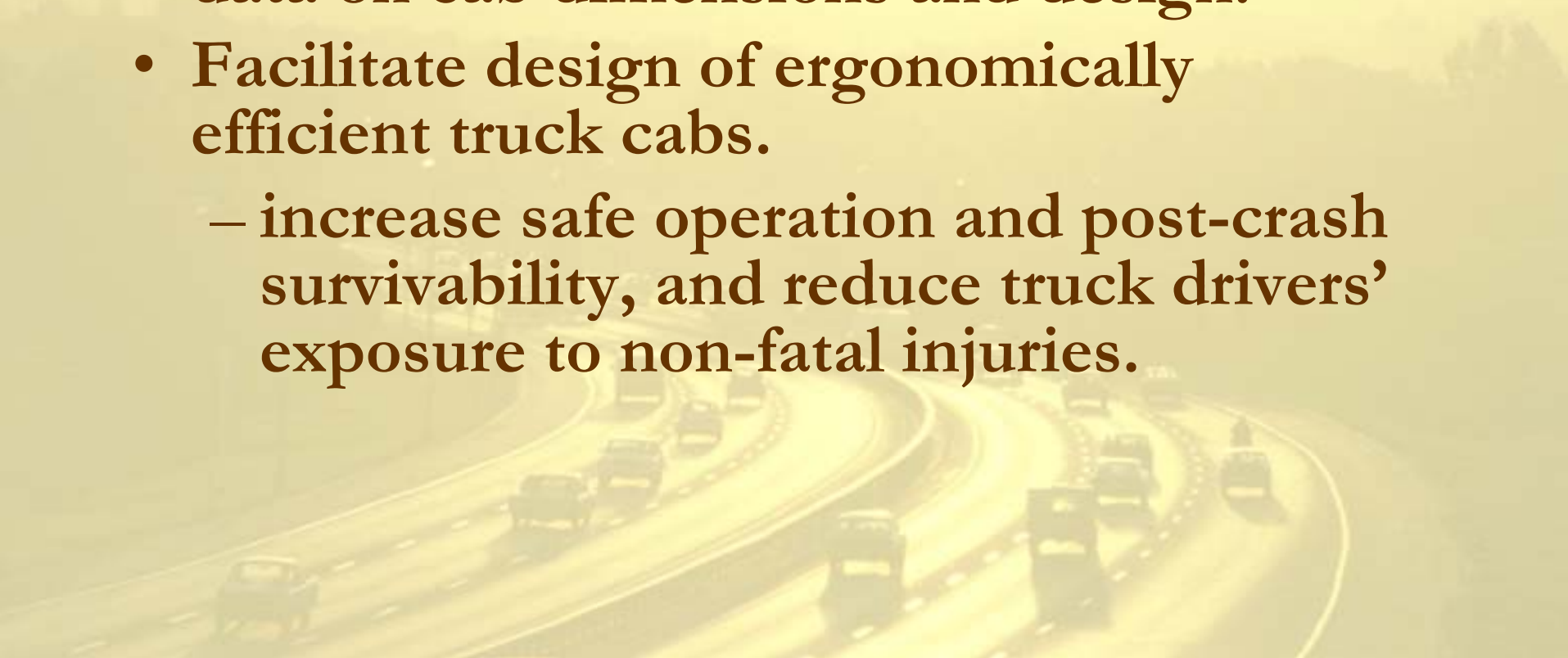
Division of Surveillance, Hazard
Evaluations, and Field Studies

(513) 841-4231

WSieber@CDC.GOV

Truck Driver Anthropometry

- Aim is to update 25-year old data on truck drivers' body dimensions, and provide data on cab dimensions and design.
- Facilitate design of ergonomically efficient truck cabs.
 - increase safe operation and post-crash survivability, and reduce truck drivers' exposure to non-fatal injuries.



Truck Driver Anthropometry

- Supported by the Society of Automotive Engineers and the Truck Manufacturers Association
- Project using traditional techniques as well as digital whole-body scanning
- *Project contact:* Jinhua Guan, Ph.D.
Division of Safety Research
(304) 285-5894
Project period: 2007-2010

Research Grants

- Screening for OSA in commercial drivers
- Large truck ingress/egress
- Preventing work injuries and chronic illness

www.cdc.gov/niosh/programs/twu/

International Conference on Road Safety at Work Washington, DC, 16-18 February 2009

- ◆ Co-sponsors: WHO, ILO, PAHO, World Bank, Department of State, and National Safety Council
- ◆ The first international conference devoted to road safety specifically for workers



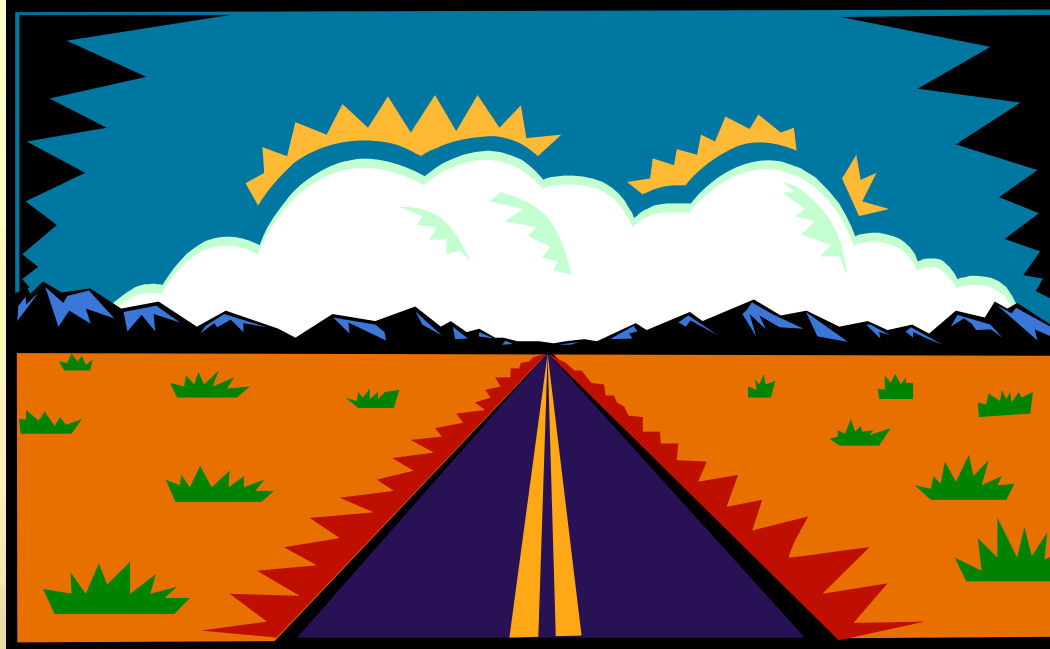
Photo Credit: WHO/P. Viot

Conference Topics

- Basics of fleet risk management
- Road safety and “corporate social responsibility”
- Panel discussions on fleet safety in developed and developing countries
- Managing risk for contracted drivers or employee drivers in the informal sector

For more information:

www.cdc.gov/niosh/programs/twu/global



Questions?

The findings and conclusions in this presentation are those of the author and do not necessarily represent the views of the National Institute for Occupational Safety and Health.