

# NORTH DAKOTA TRAFFIC SAFETY FACTS



## Oil Counties

**Billings, Bottineau, Bowman, Burke, Divide, Dunn, Golden Valley, McHenry, McKenzie, McLean, Mercer, Mountrail, Renville, Slope, Stark, Ward, Williams**

THE FOLLOWING CRASH EVENTS OCCURRED ON THE OIL COUNTIES ROADS FROM 2007 TO 2011:

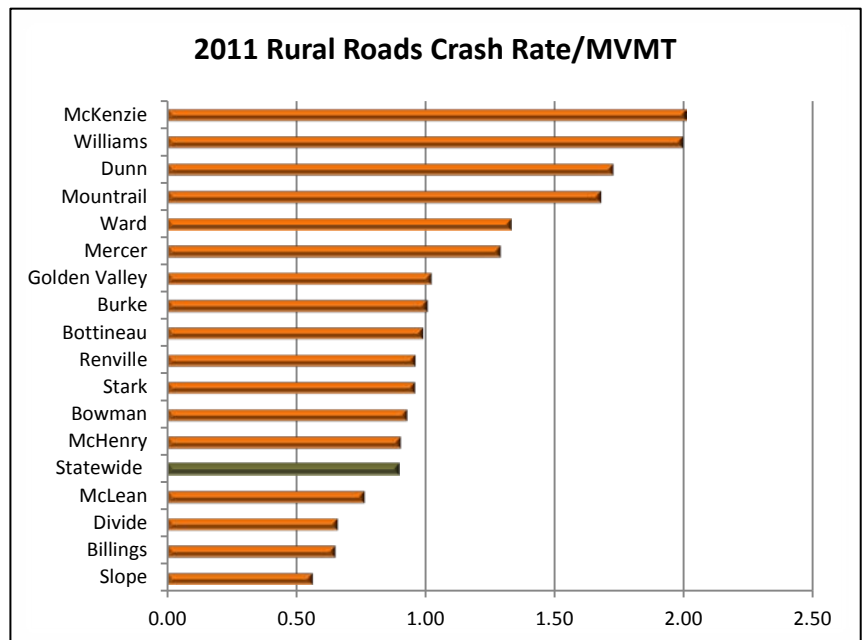
Overview	
Total Crashes	18246
Injuries	3943
Fatalities	211
Est. \$ Loss*	\$656.3 Million

Year	Total Crashes	Injuries	Fatalities	Total Est \$ Loss*
2011	5509	1118	63	\$192.9 Million
2010	3905	846	33	\$125.1 Million
2009	3202	725	46	\$128.7 Million
2008	2962	652	38	\$112.1 Million
2007	2668	602	31	\$97.7 Million

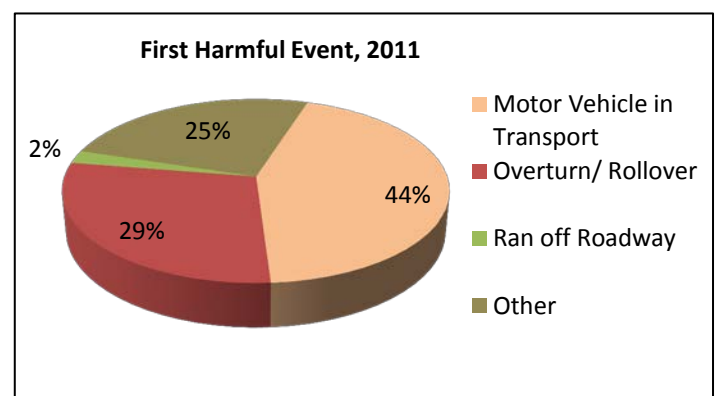
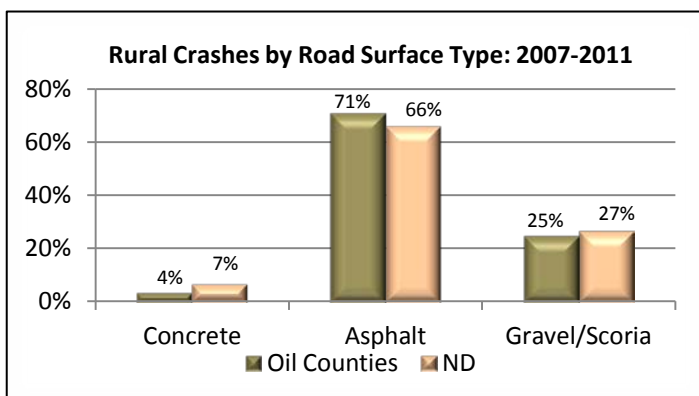
\*Total Est \$ Loss includes PDO crashes. Values for Est \$ Loss as reported in NDDOT 2010 Crash Summary

	2011 Rural Roads Crashes*	2011 Rural Roads Crash Rate/MVMT**	Diff (+/-) 2010 to 2011
Billings	39	0.65	0.23
Bottineau	93	0.99	0.22
Bowman	48	0.93	0.46
Burke	53	1.01	0.27
Divide	28	0.66	-0.05
Dunn	169	1.73	0.62
Golden Valley	41	1.02	0.40
McHenry	105	0.90	0.21
McKenzie	399	2.01	1.13
McLean	157	0.76	0.19
Mercer	115	1.29	0.15
Mountrail	343	1.68	0.76
Renville	35	0.96	0.11
Slope	17	0.56	0.07
Stark	184	0.96	0.24
Ward	448	1.33	0.46
Williams	446	1.99	0.79

\*Does not include urban crashes; \*\*Based on rural VMT



## RURAL ROAD TYPES AND HARMFUL EVENTS

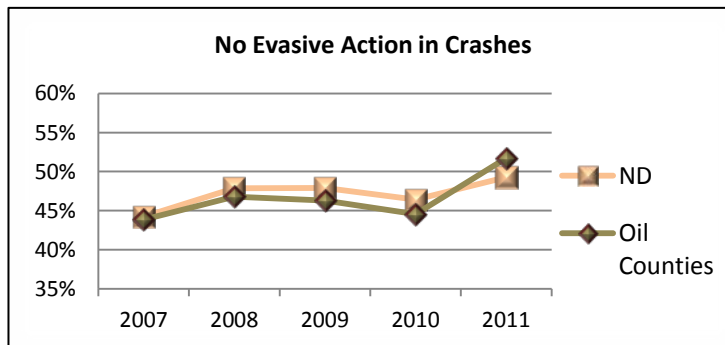




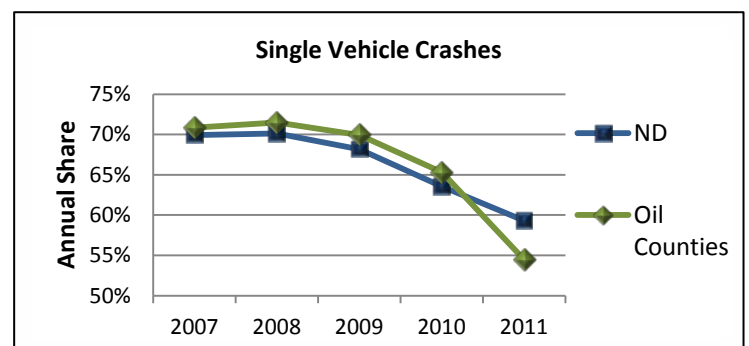
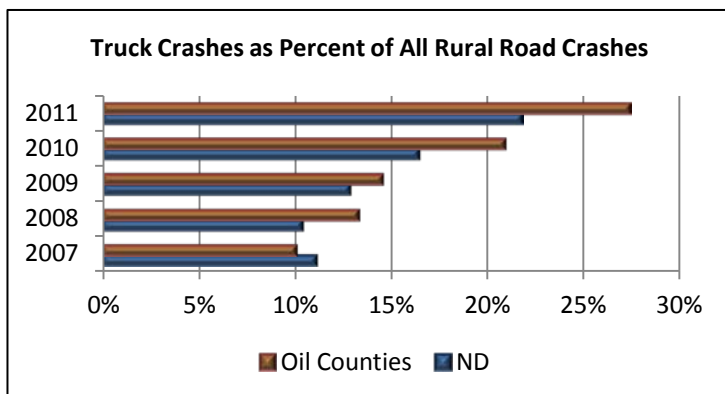
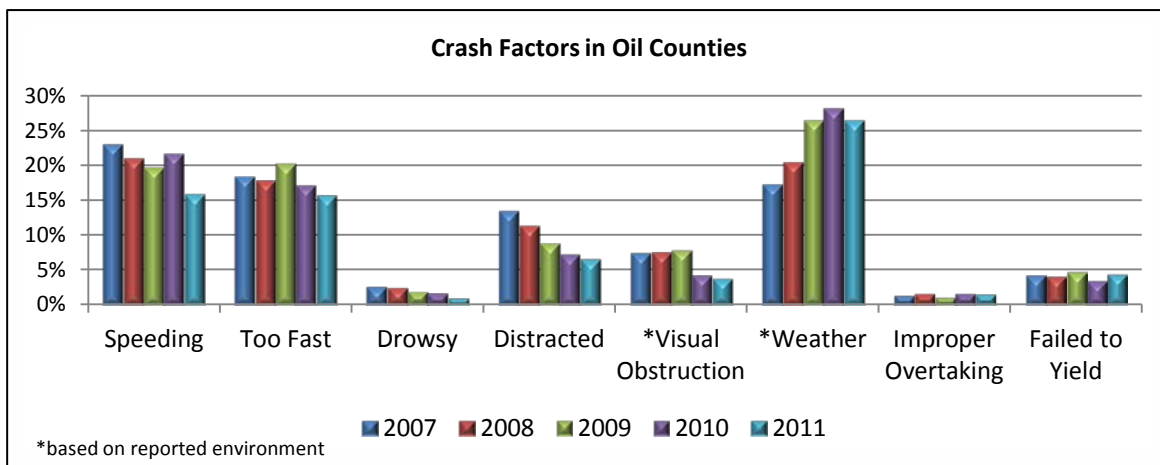
## Oil Counties

	Manner of Collision, Multivehicle							
	Angle		Rear-End		Head-On		Sideswipe	
	Oil Counties	ND	Oil Counties	ND	Oil Counties	ND	Oil Counties	ND
<b>2007</b>	37.4%	37.7%	29.7%	30.5%	14.6%	14.6%	17.5%	16.3%
<b>2008</b>	35.6%	37.8%	34.5%	32.1%	16.9%	17.1%	11.9%	12.3%
<b>2009</b>	42.9%	39.9%	28.9%	30.0%	17.2%	17.0%	10.2%	11.8%
<b>2010</b>	35.4%	36.7%	32.9%	34.0%	17.3%	15.8%	14.2%	13.2%
<b>2011</b>	34.3%	36.6%	36.1%	35.9%	15.6%	14.4%	13.7%	12.9%
<b>5 Yr Avg</b>	37.1%	37.7%	32.4%	32.5%	16.3%	15.8%	13.5%	13.3%

Note: Rear-to-Rear accounted for less than 1%.



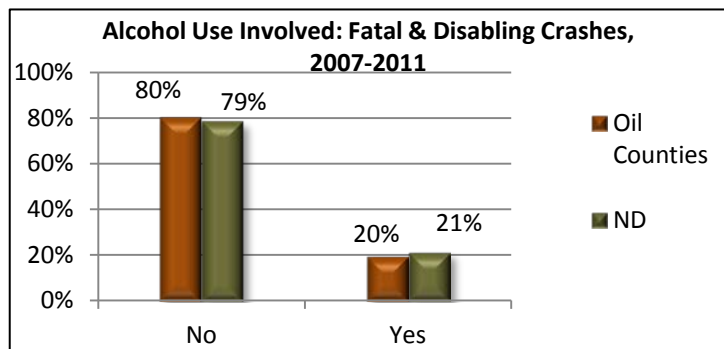
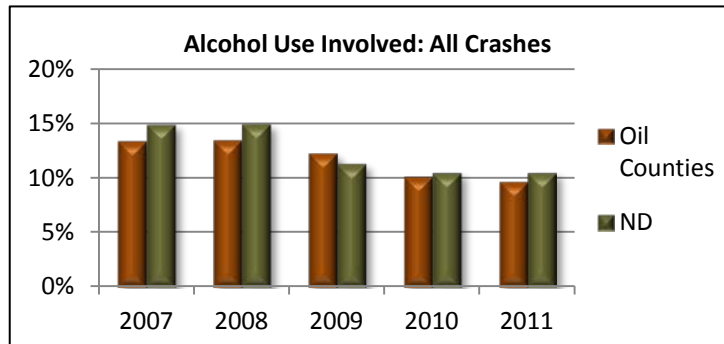
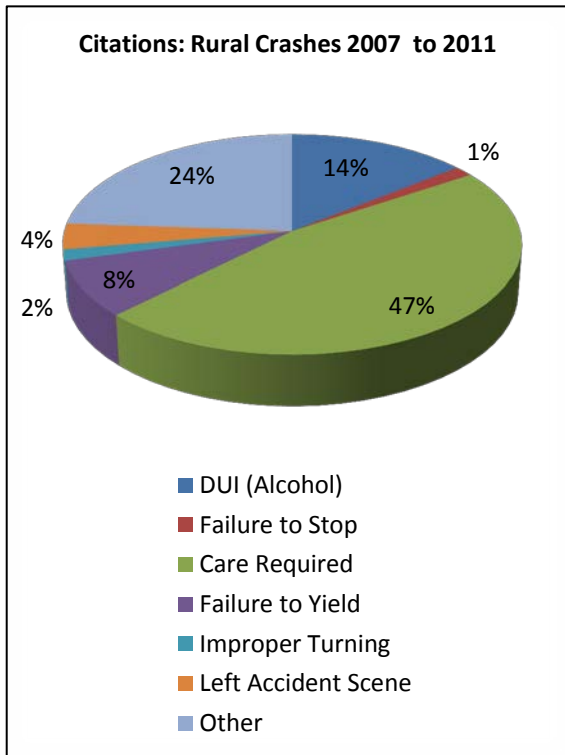
## RURAL ROAD CRASH FACTORS



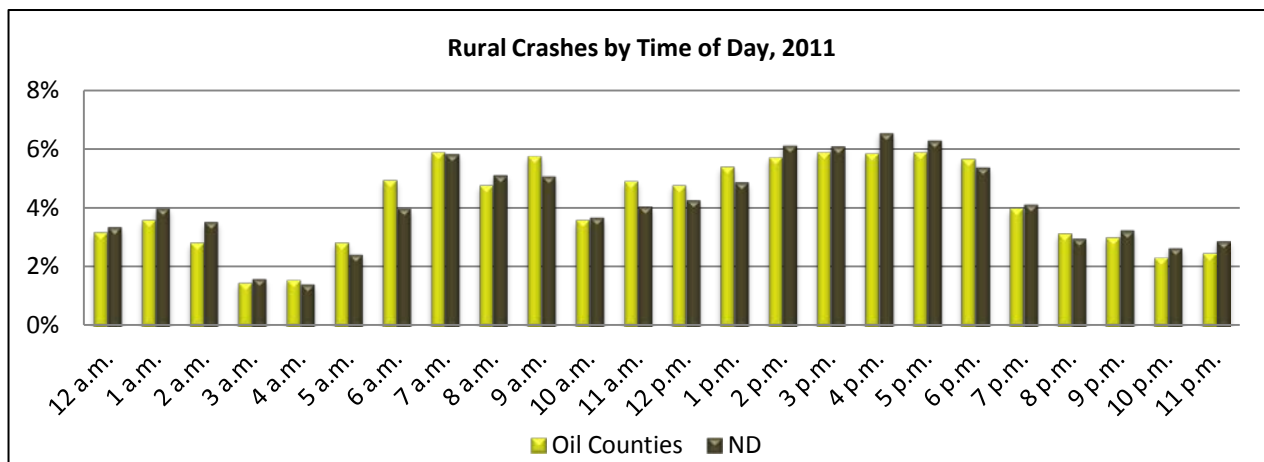
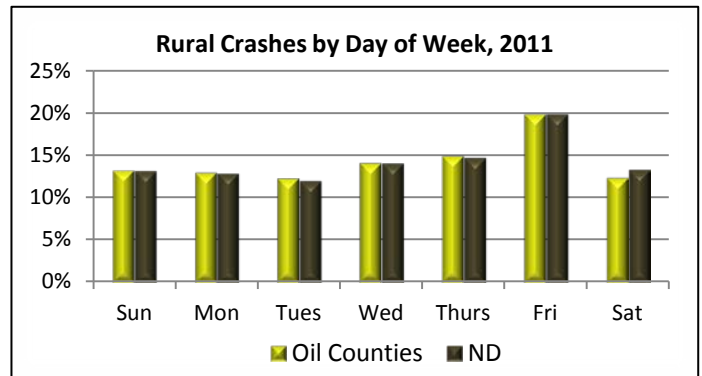
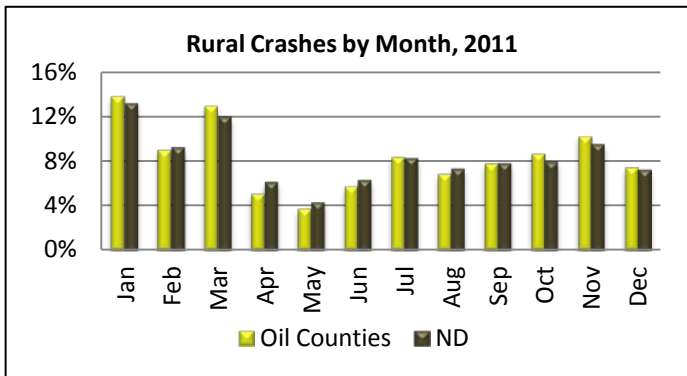


**Oil Counties**

**CITATIONS AND ALCOHOL-RELATED CRASHES**



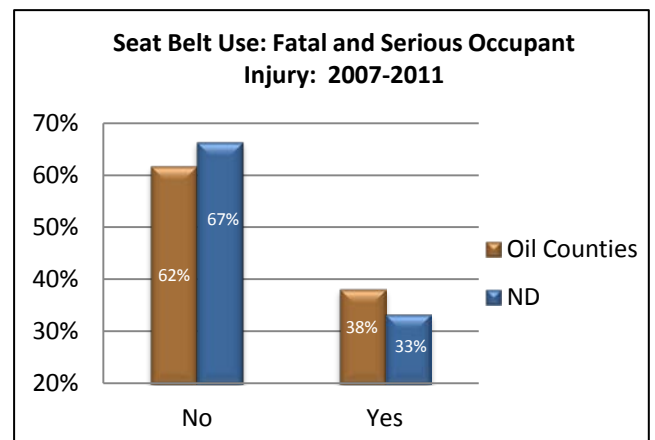
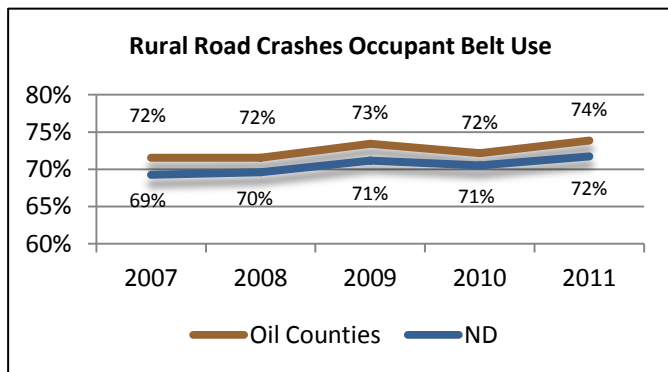
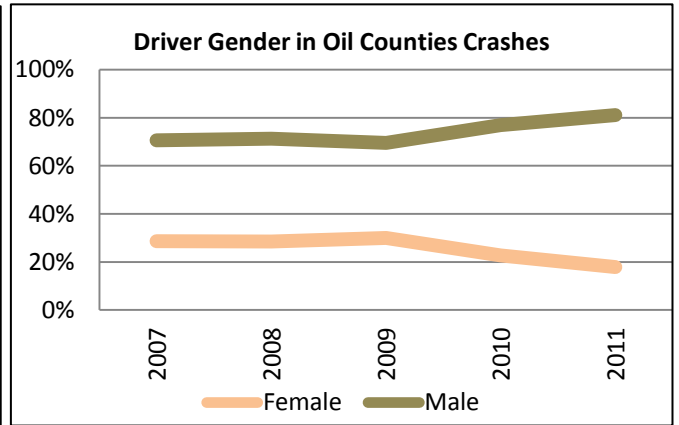
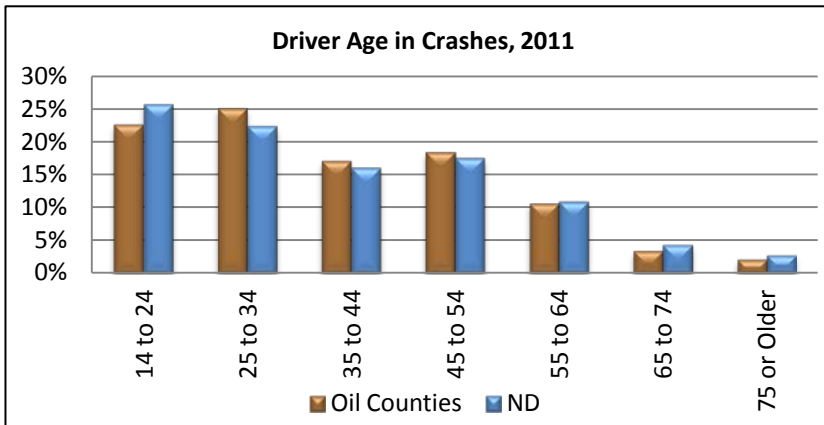
**RURAL CRASH DATE/TIME DISTRIBUTION**



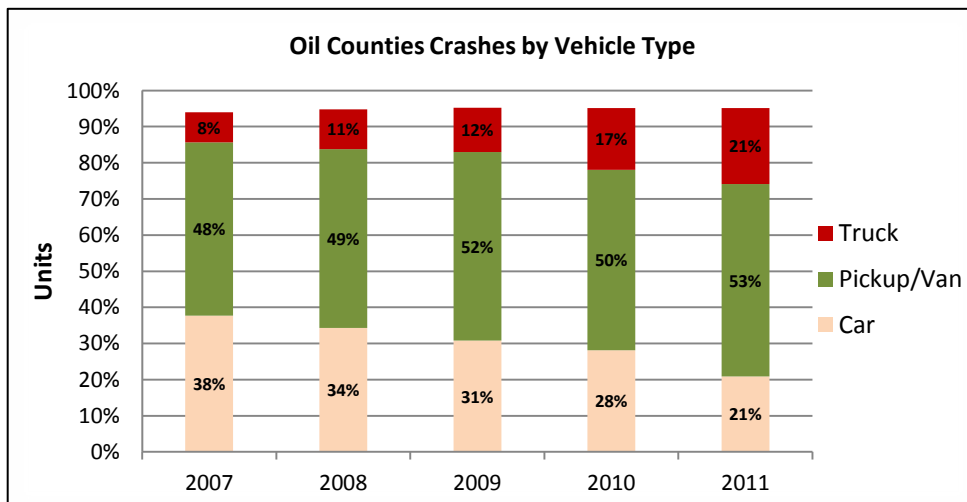


**Oil Counties**

**DRIVERS AND OCCUPANTS**



**RURAL ROAD CRASH VEHICLE TYPE**

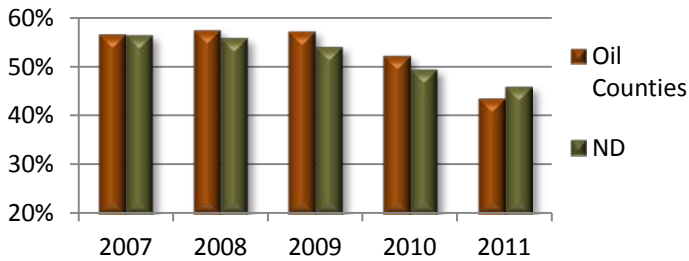




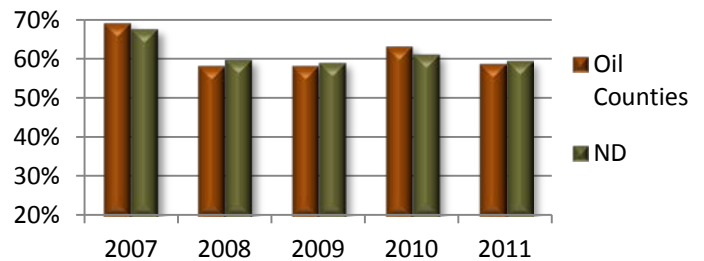
## Oil Counties

### RURAL ROAD CRASH TYPES

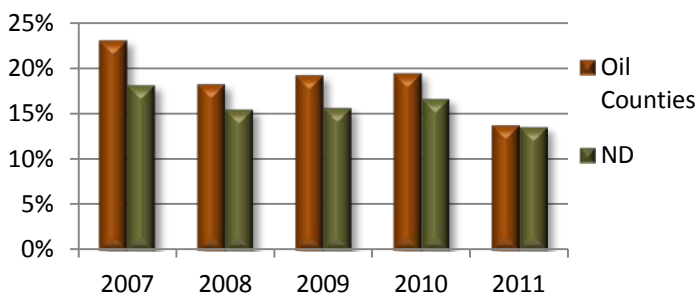
Percentage of Crashes Involving "Run off Road" Incident



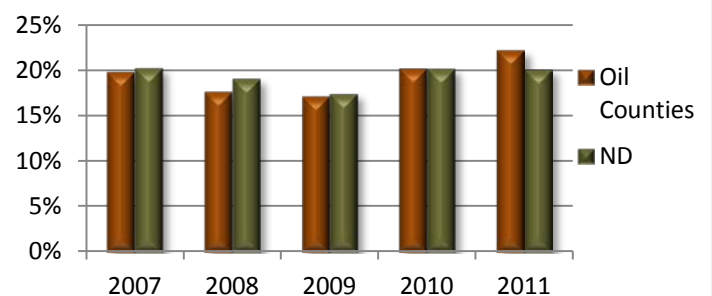
Percentage of Crashes Involving "Lane Departure" Incident



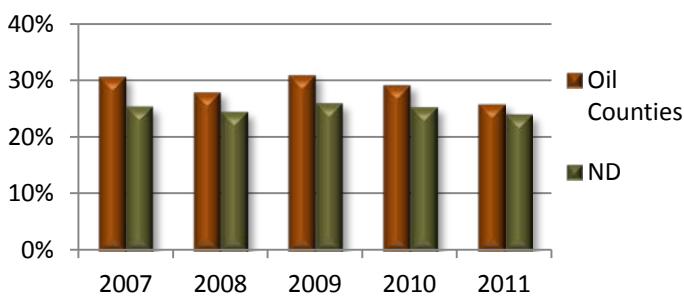
Percentage of Crashes Occurring on Curves



Percentage of Crashes Occurring at Intersections



Percentage of Crashes Occurring on Hills



Source: Data summaries based on North Dakota Crash Data, 2007 to 2011, Traffic Safety Office, ND Department of Transportation

The contents presented in this report are the sole responsibility of the Upper Great Plains Transportation Institute and the authors. The document is disseminated under the sponsorship of the ND Department of Transportation and the Federal Highway Administration.

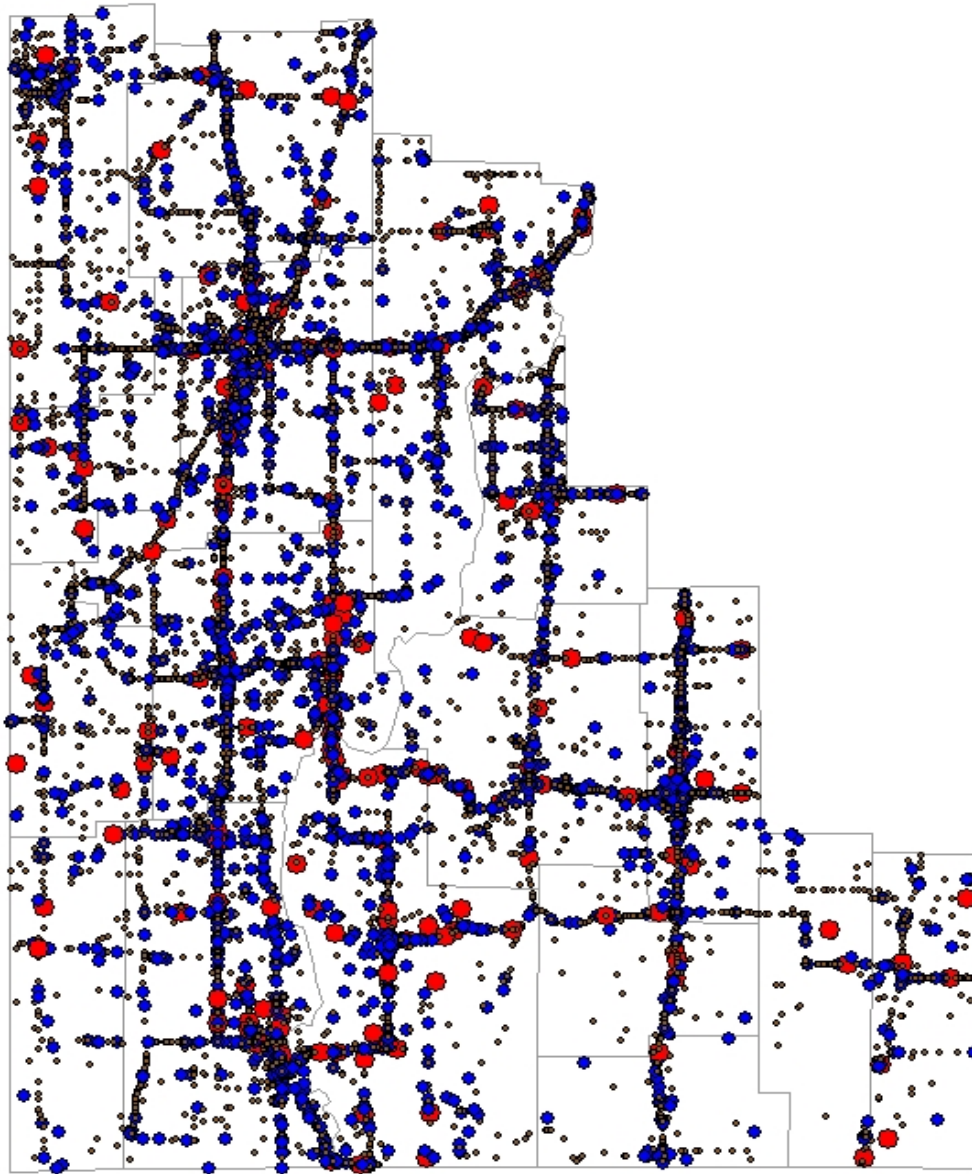
North Dakota State University does not discriminate on the basis of age, color, disability, gender identity, marital status, national origin, public assistance status, sex, sexual orientation, status as a U.S. veteran, race or religion. Direct inquiries to the Vice President for Equity, Diversity and Global Outreach, 205 Old Main, (701)231-7708.

For Information Contact: Rural Transportation Safety and Security Center  
Upper Great Plains Transportation Institute, North Dakota State University •  
www.ugpti.org/rtssc • Ph: 701.231.7767

# North Dakota Traffic Safety Facts



## Oil Counties



Legend

- crssev
- Fatal
- Injury
- PDO
- Oil Region

ND Rural Road Crashes, 2007-2011

Data Source: NDDOT Crash Data

035 70.84



Albers Projection  
Central Meridian: 98  
False Easting: 30  
False Northing: 50  
Latitude of Origin: 40