

North Dakota Traffic Safety Facts

Oil Counties

Billings, Bottineau, Bowman, Burke, Divide, Dunn,
Golden Valley, McHenry, McKenzie, McLean,
Mercer, Mountrail, Renville, Slope, Stark, Ward,
Williams

**THE FOLLOWING CRASH EVENTS
OCCURRED ON THE OIL COUNTIES ROADS
FROM 2006 TO 2010:**

Overview	
Total Crashes	15063
Injuries	3330
Fatalities	182
Est. \$ Loss *	\$543.9 Million

Year	Total Crashes	Injuries	Fatalities	Total Est \$ Loss*
2010	3909	847	33	\$121.8 Million
2009	3203	725	46	\$126.0 Million
2008	2962	652	38	\$109.6 Million
2007	2669	602	31	\$95.4 Million
2006	2320	504	34	\$90.9 Million

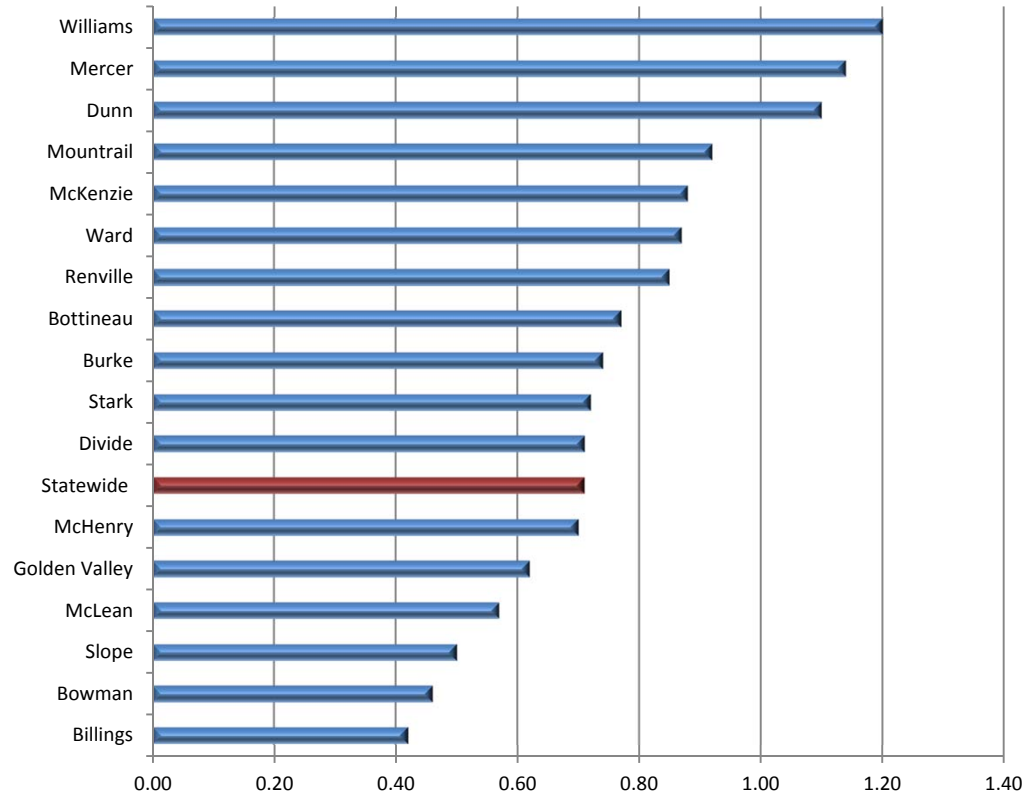
*Total Est \$ Loss includes PDO crashes. Values for Est \$ Loss as reported in NDDOT 2009 Crash Summary

	2010 Rural Roads Crashes*	2010 Rural Roads Crash Rate/MVMT**	Diff (+/-) 2009 to 2010
Billings	25	0.42	-0.01
Bottineau	72	0.77	-0.37
Bowman	24	0.46	-0.47
Burke	39	0.74	0.02
Divide	30	0.71	0.22
Dunn	108	1.10	0.22
Golden Valley	25	0.62	-0.08
McHenry	81	0.70	-0.06
McKenzie	175	0.88	0.32
McLean	118	0.57	-0.11
Mercer	102	1.14	-0.43
Mountrail	188	0.92	0.25
Renville	31	0.85	-0.14
Slope	15	0.50	0.17
Stark	138	0.72	-0.03
Ward	294	0.87	0.01
Williams	269	1.20	0.48

*Does not include urban crashes

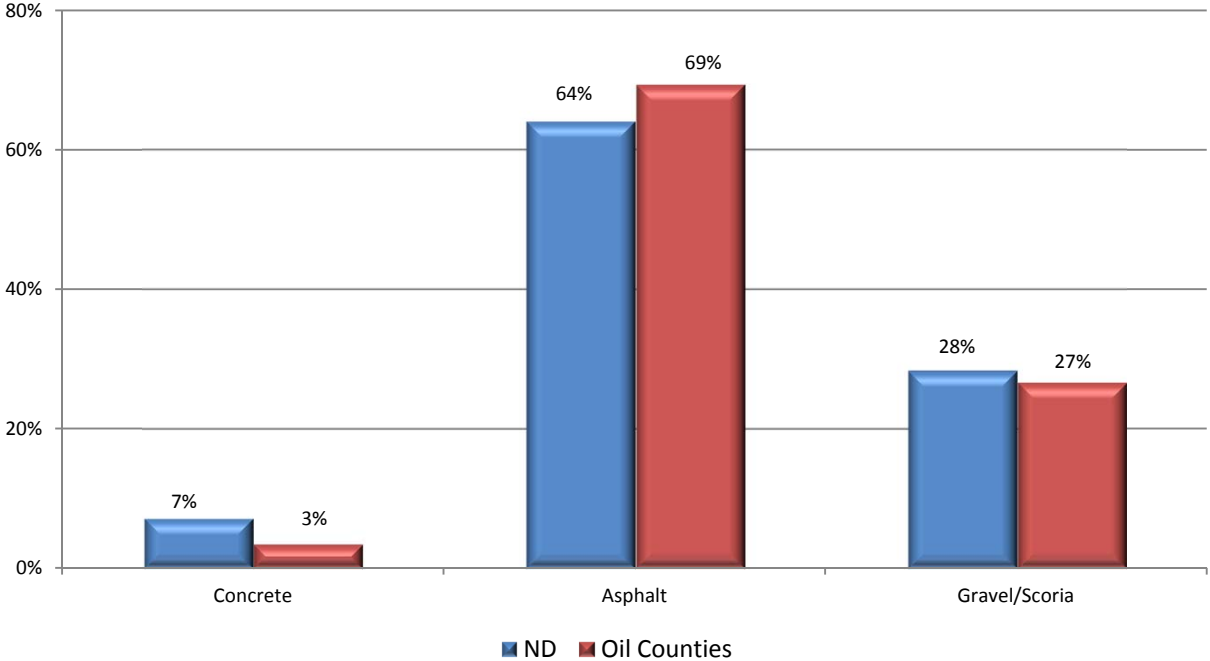
** Based on rural VMT

2010 Rural Roads Crash Rate/MVMT

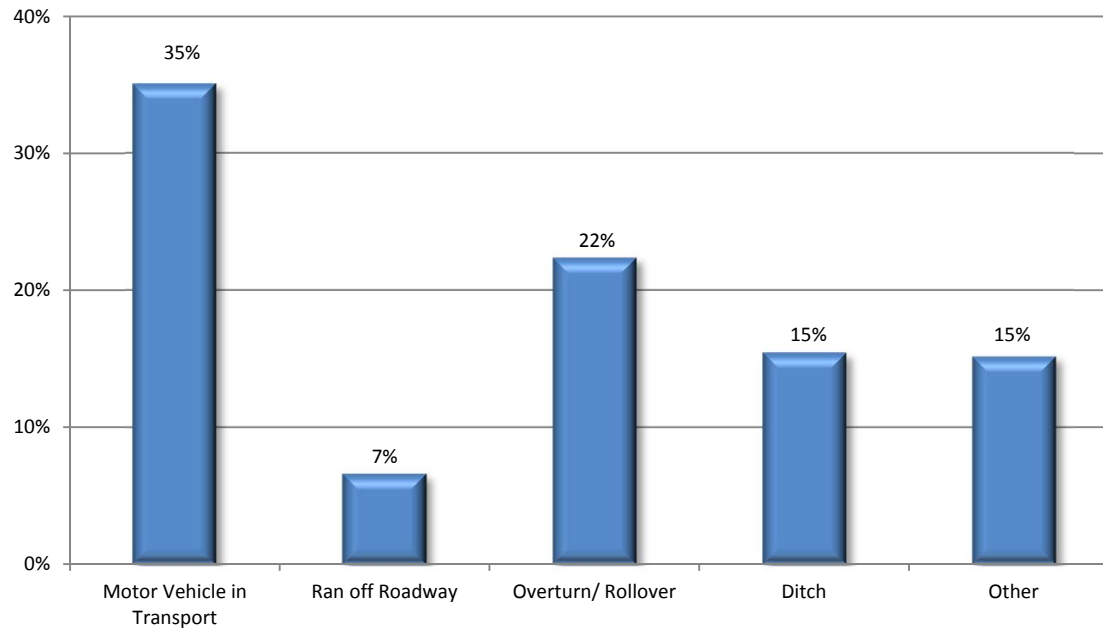


RURAL ROAD TYPES AND HARMFUL EVENTS

Rural Crashes by Road Surface Type: 2006-2010

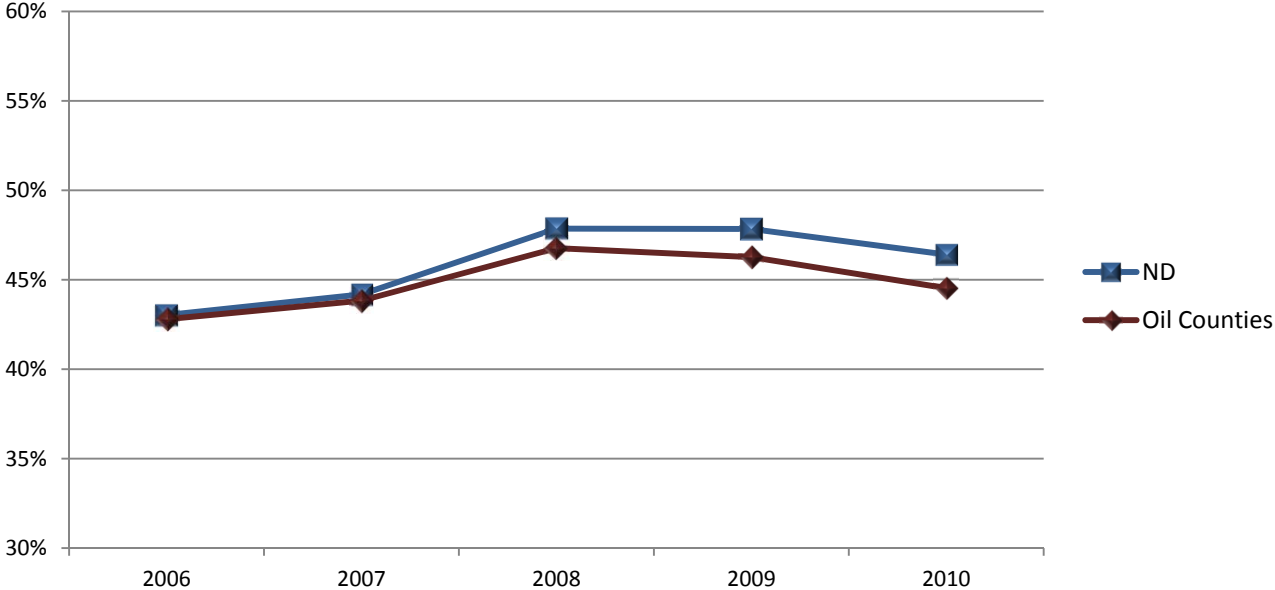


First Harmful Event, 2010



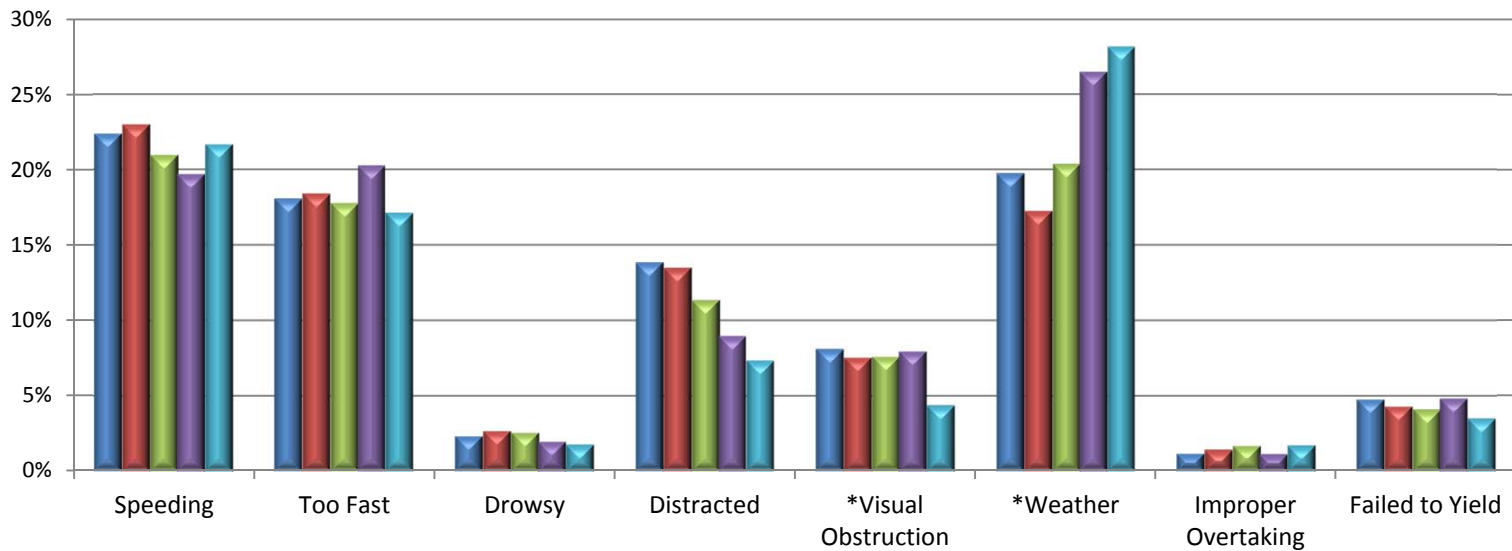
Manner of Collision, Multivehicle								
	Angle		Rear-End		Head-On		Sideswipe	
	Oil Counties	ND	Oil Counties	ND	Oil Counties	ND	Oil Counties	ND
2006	39.7%	38.8%	28.2%	28.3%	17.1%	14.9%	12.0%	14.0%
2007	36.0%	36.4%	28.9%	29.4%	14.2%	14.1%	17.0%	15.7%
2008	34.6%	36.7%	33.6%	31.0%	16.4%	16.5%	11.5%	11.9%
2009	39.7%	37.2%	27.1%	28.1%	16.2%	15.9%	9.6%	11.0%
2010	32.6%	33.2%	30.5%	31.2%	16.3%	14.6%	13.2%	12.2%
5 Yr Avg	36.5%	36.4%	29.7%	29.6%	16.0%	15.2%	12.7%	13.0%

No Evasive Action in Crashes



RURAL ROAD CRASH FACTORS

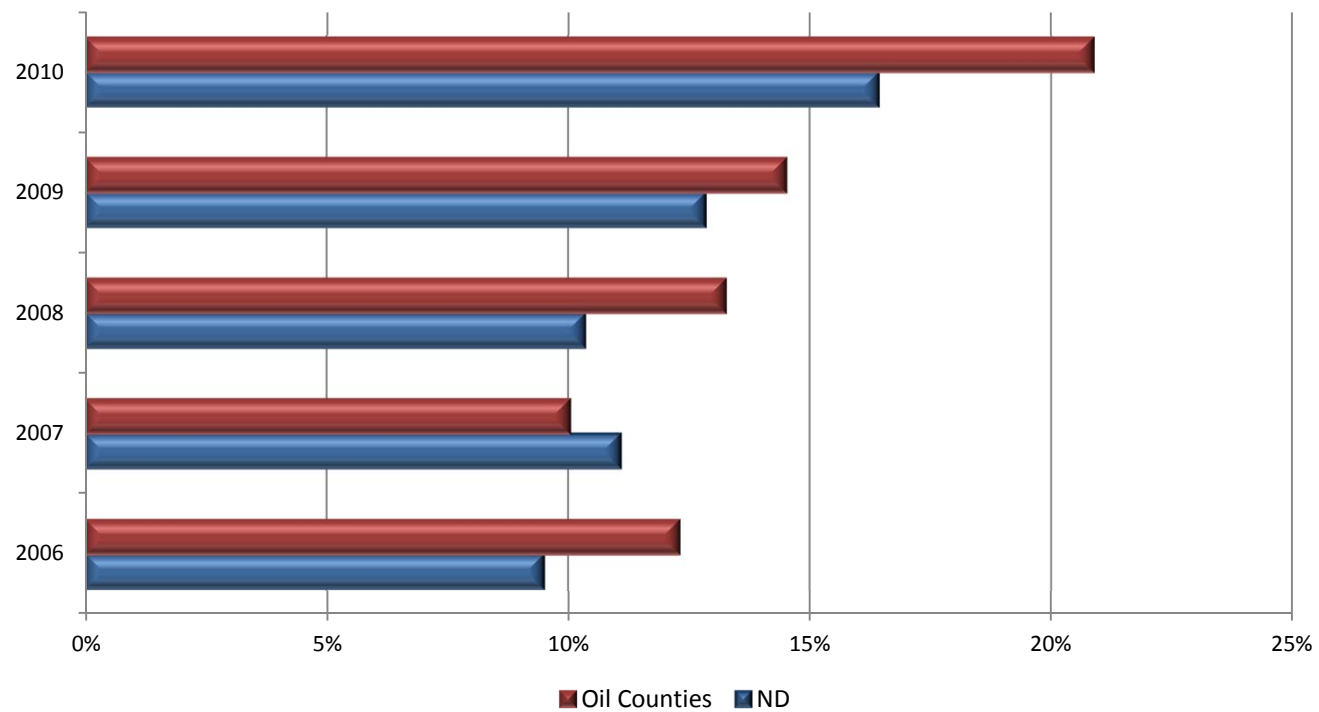
Crash Factors in Oil Counties



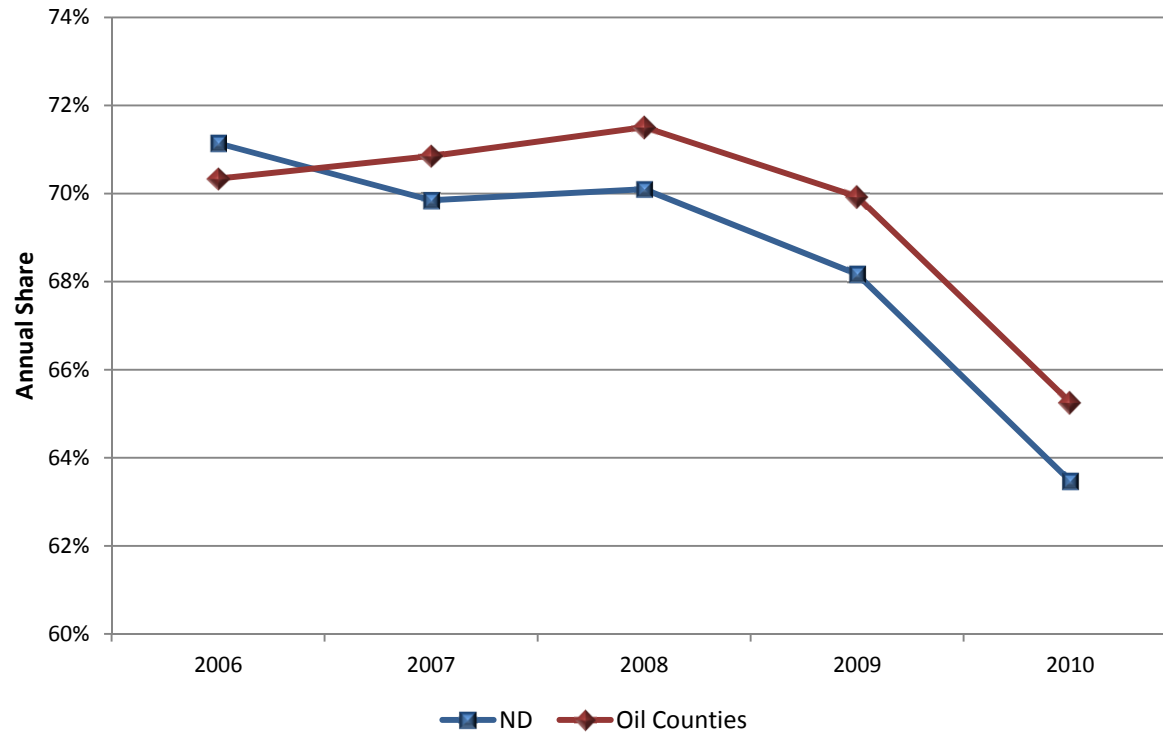
*based on reported environment

■ 2006 ■ 2007 ■ 2008 ■ 2009 ■ 2010

Truck Crashes as Percent of All Crashes

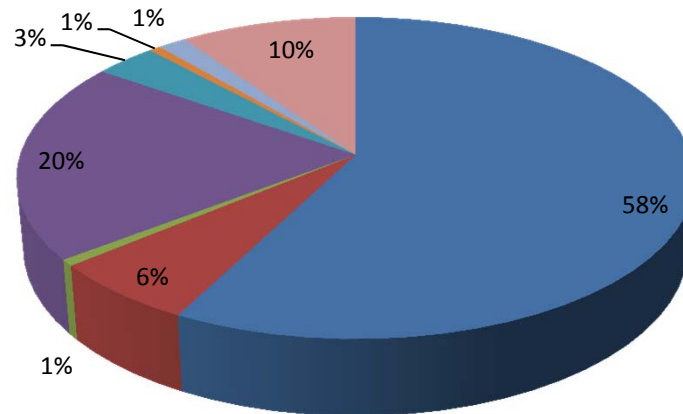


Single Vehicle Crashes



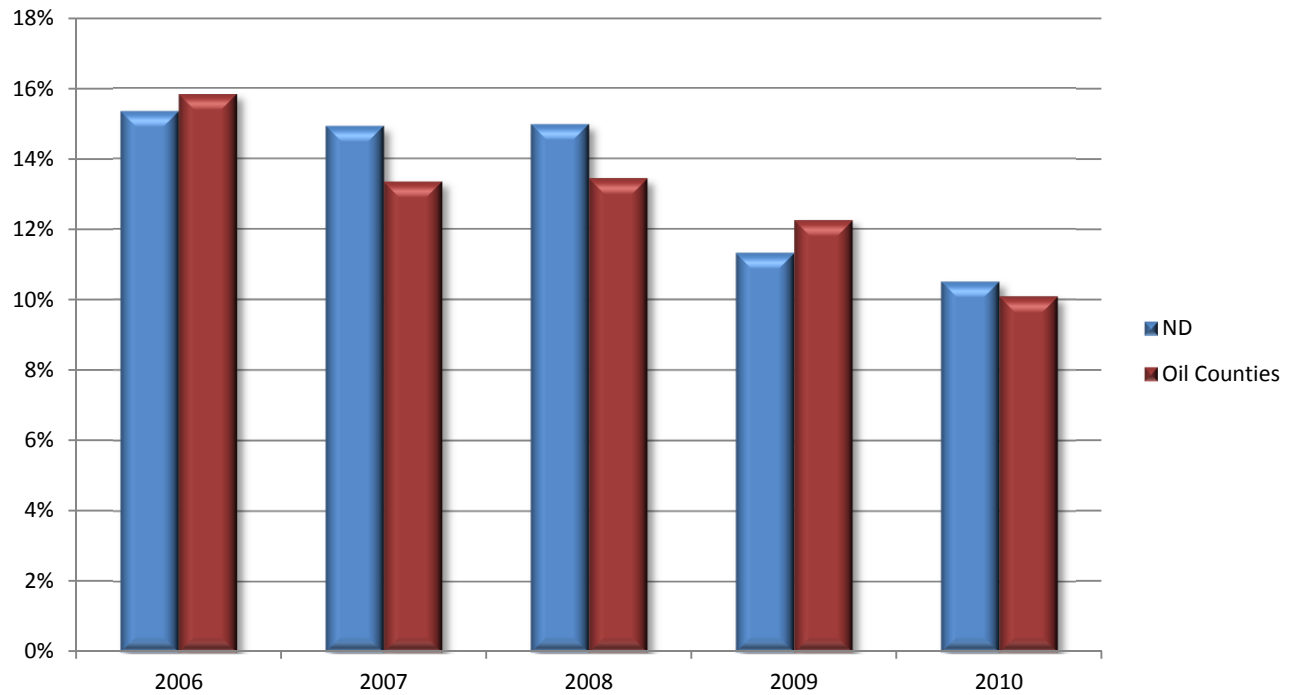
CITATIONS AND ALCOHOL-RELATED CRASHES

Citations: Rural Crashes 2006 to 2010

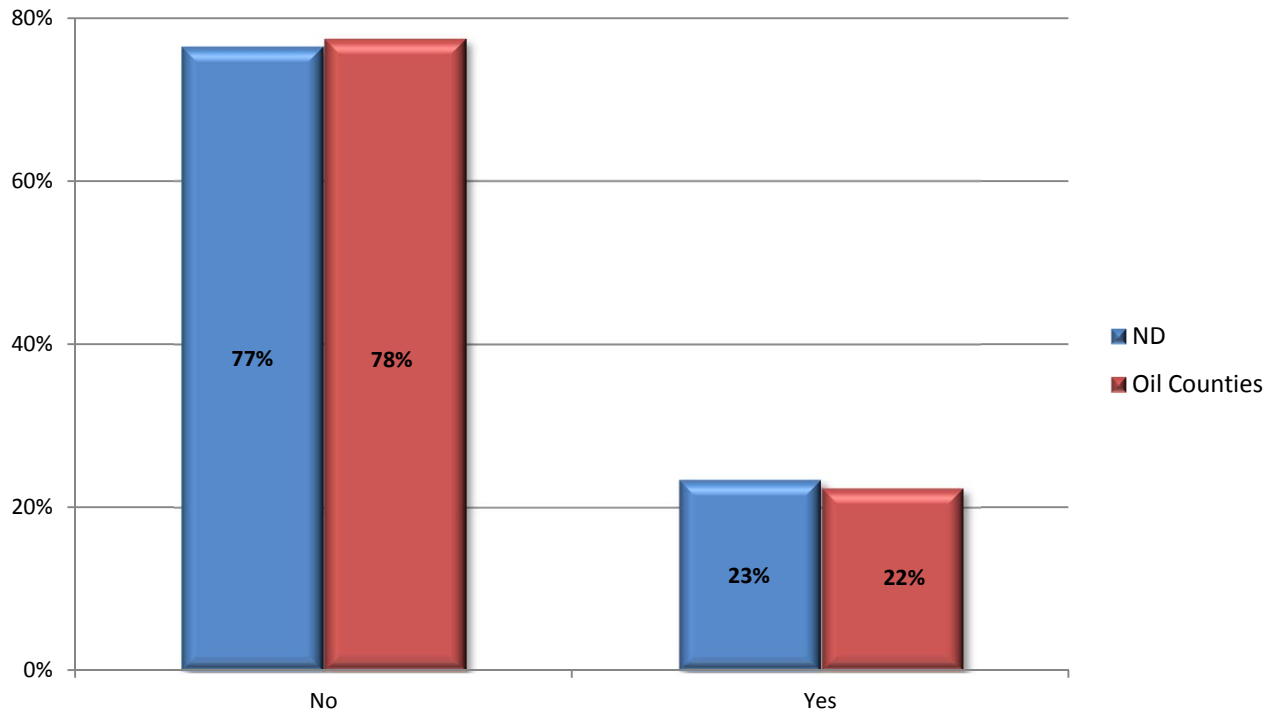


- None
- DUI (Alcohol)
- Failure to Stop
- Care Required
- Failure to Yield
- Improper Turning
- Left Accident Scene
- Other

Alcohol Use Involved: All Crashes

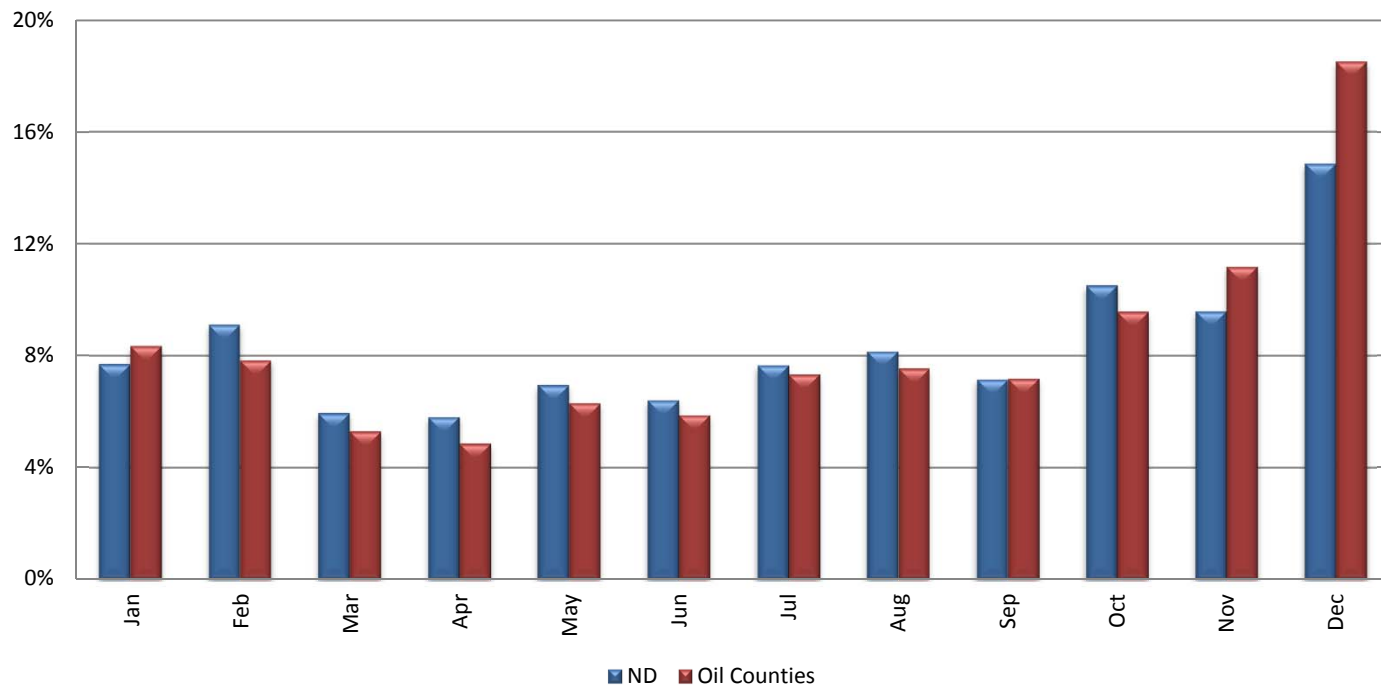


Alcohol Use Involved: Fatal & Disabling Crashes, 2006 - 2010

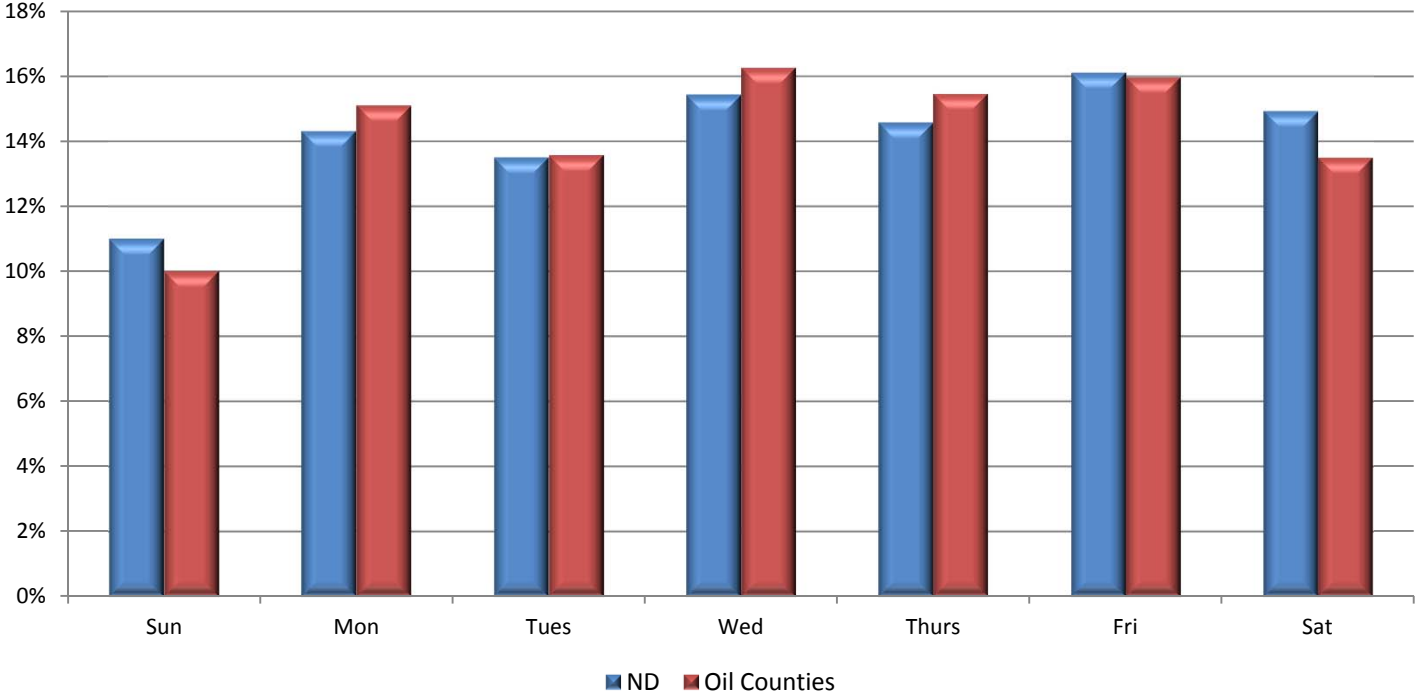


RURAL CRASH DATE/TIME DISTRIBUTION

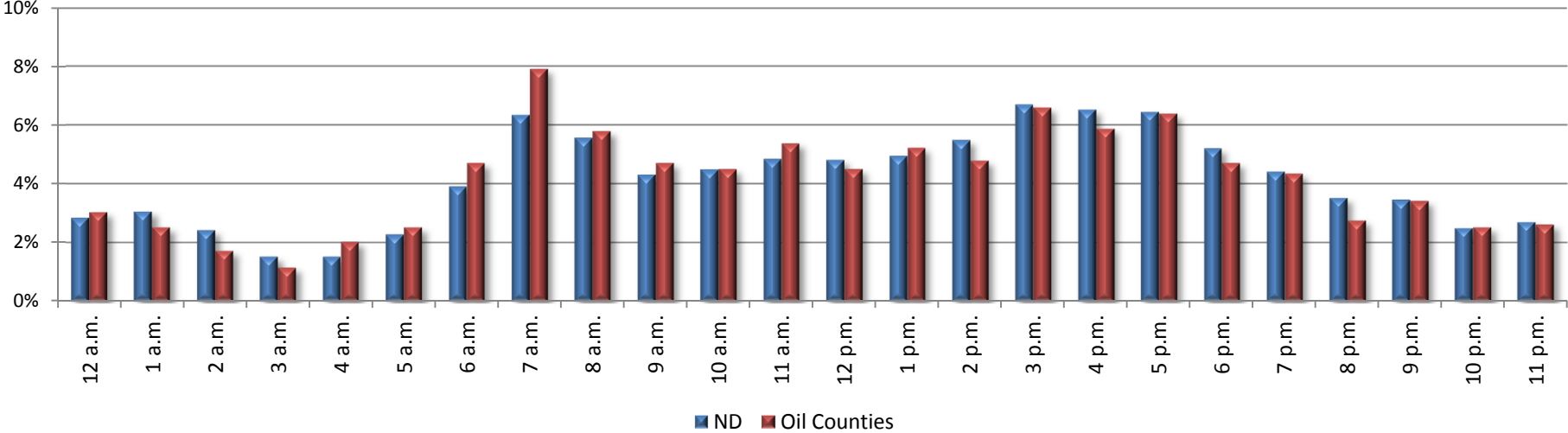
Rural Crashes by Month, 2010



Rural Crashes by Day of Week, 2010

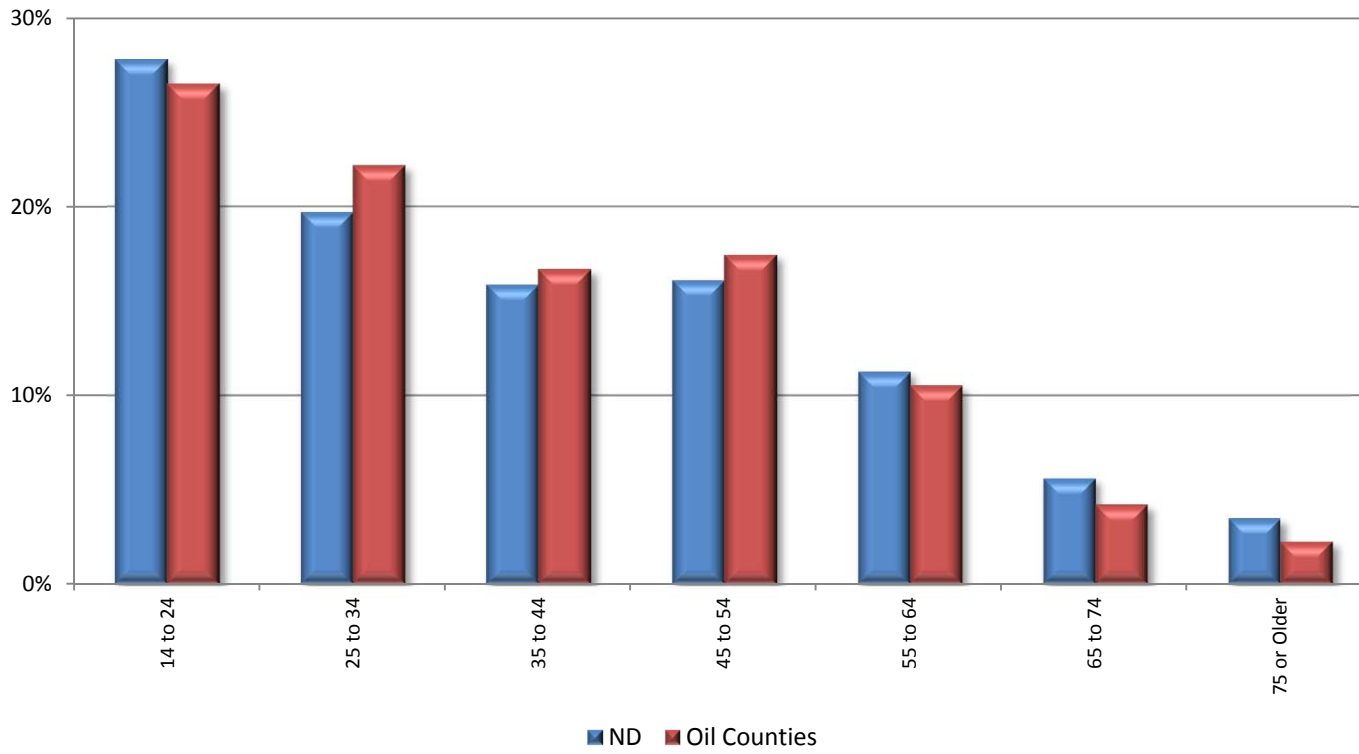


Rural Crashes by Time of Day, 2010

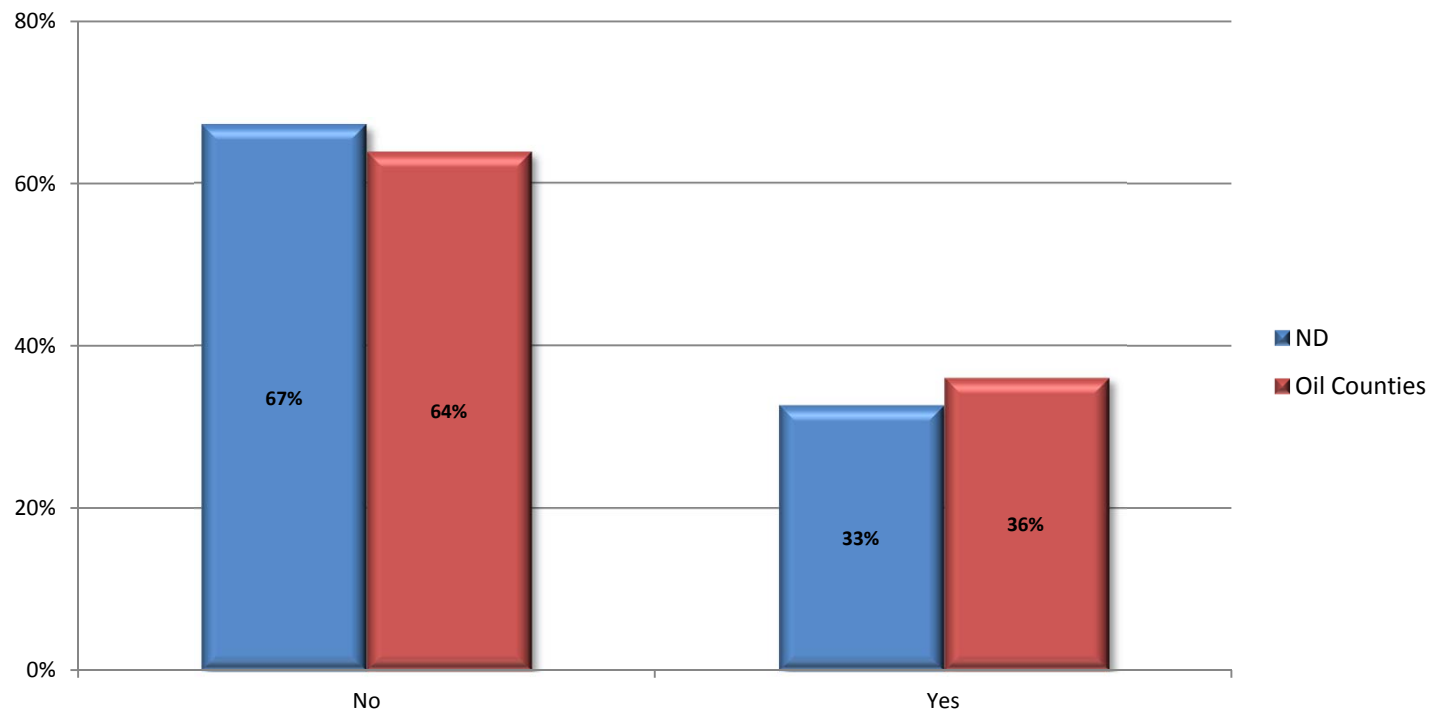


DRIVERS AND OCCUPANTS

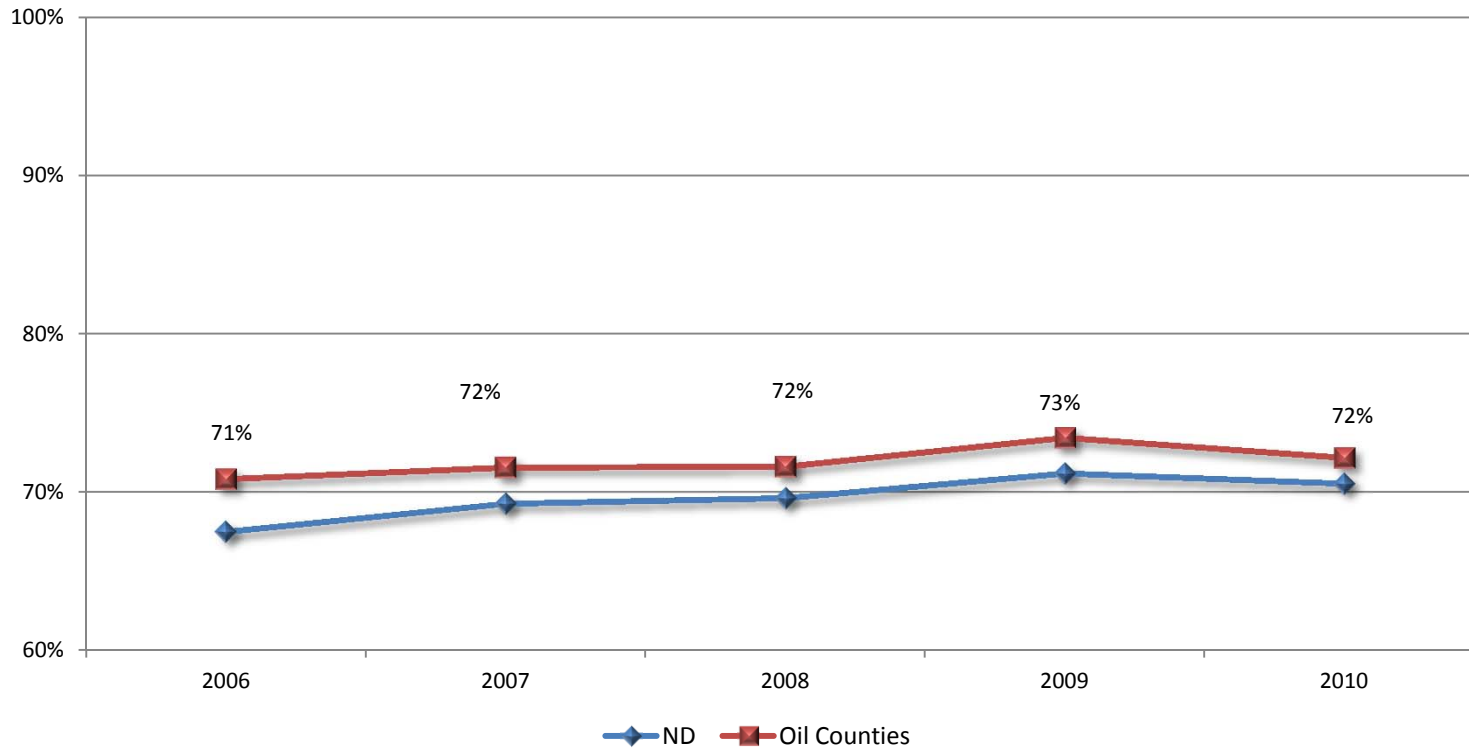
Driver Age in Crashes, 2006 - 2010



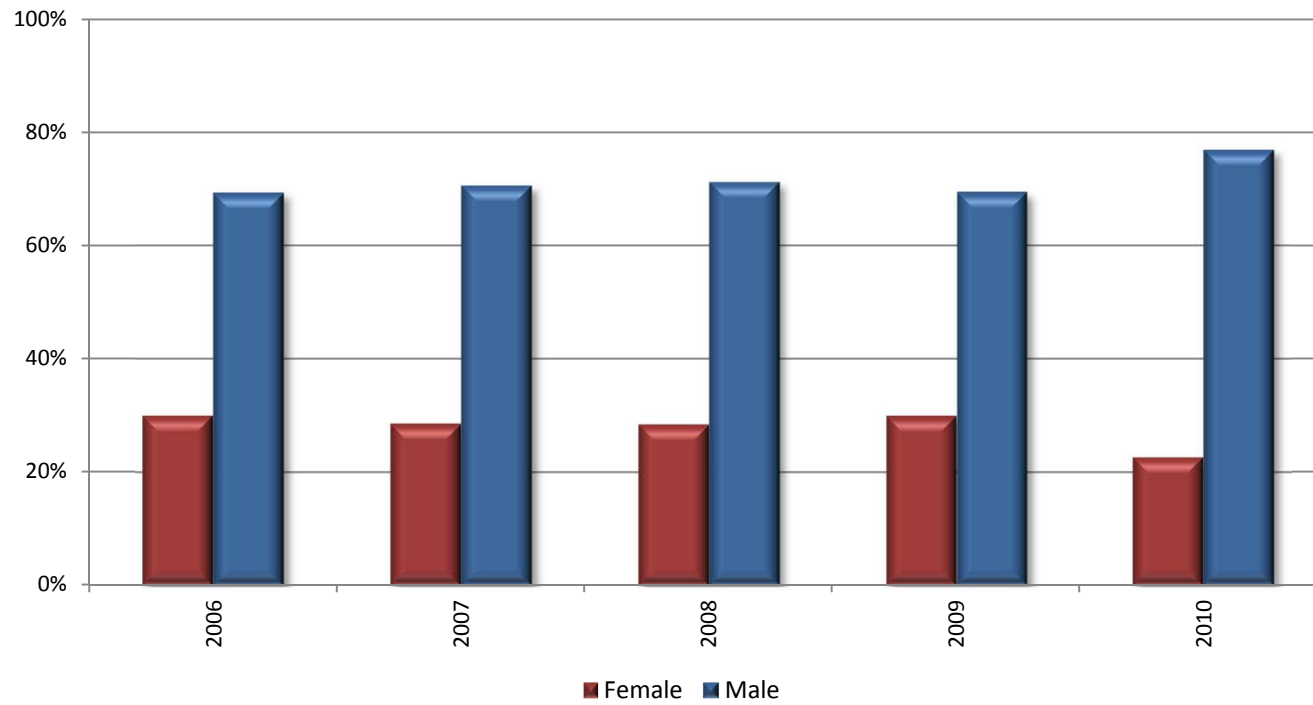
Seat Belt Use: Fatal and Serious Occupant Injury: 2006-2010



Rural Road Crashes Occupant Belt Use

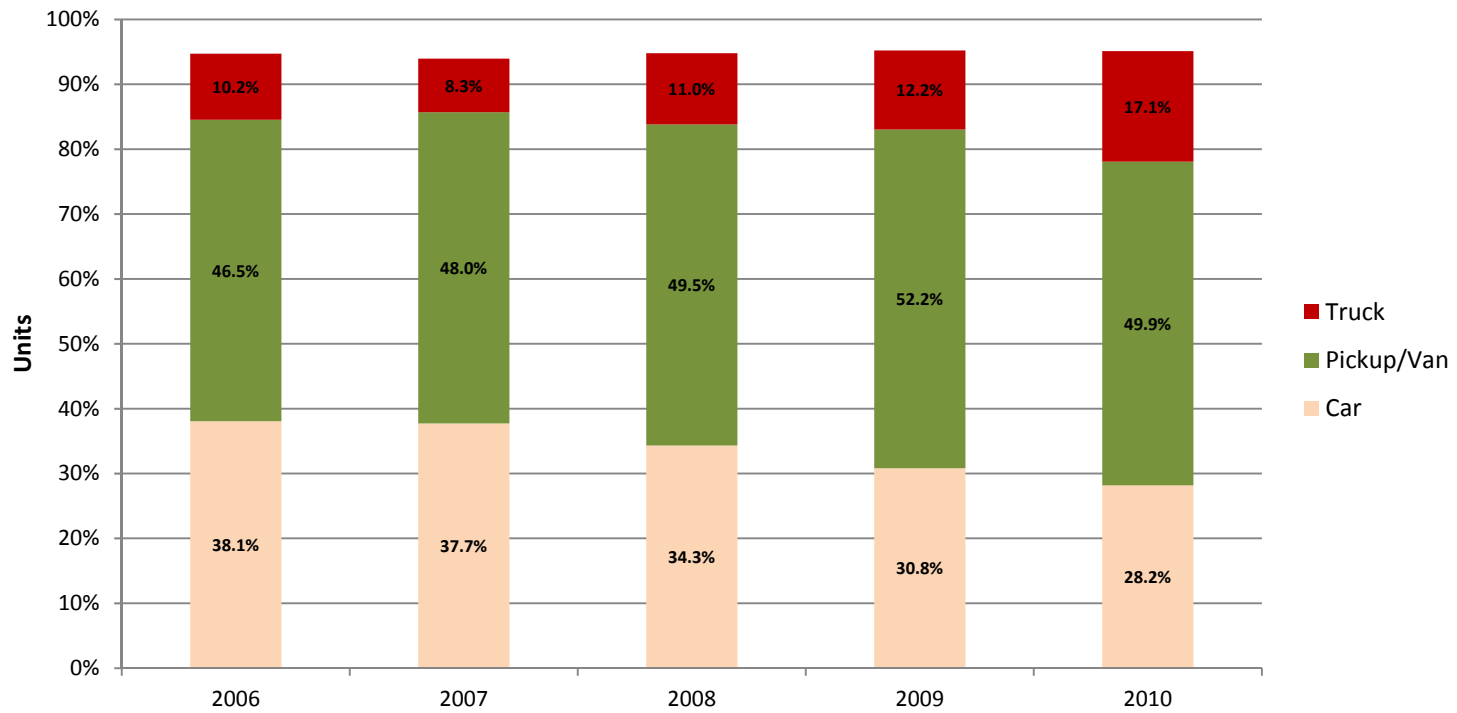


Driver Gender in Oil Counties Crashes

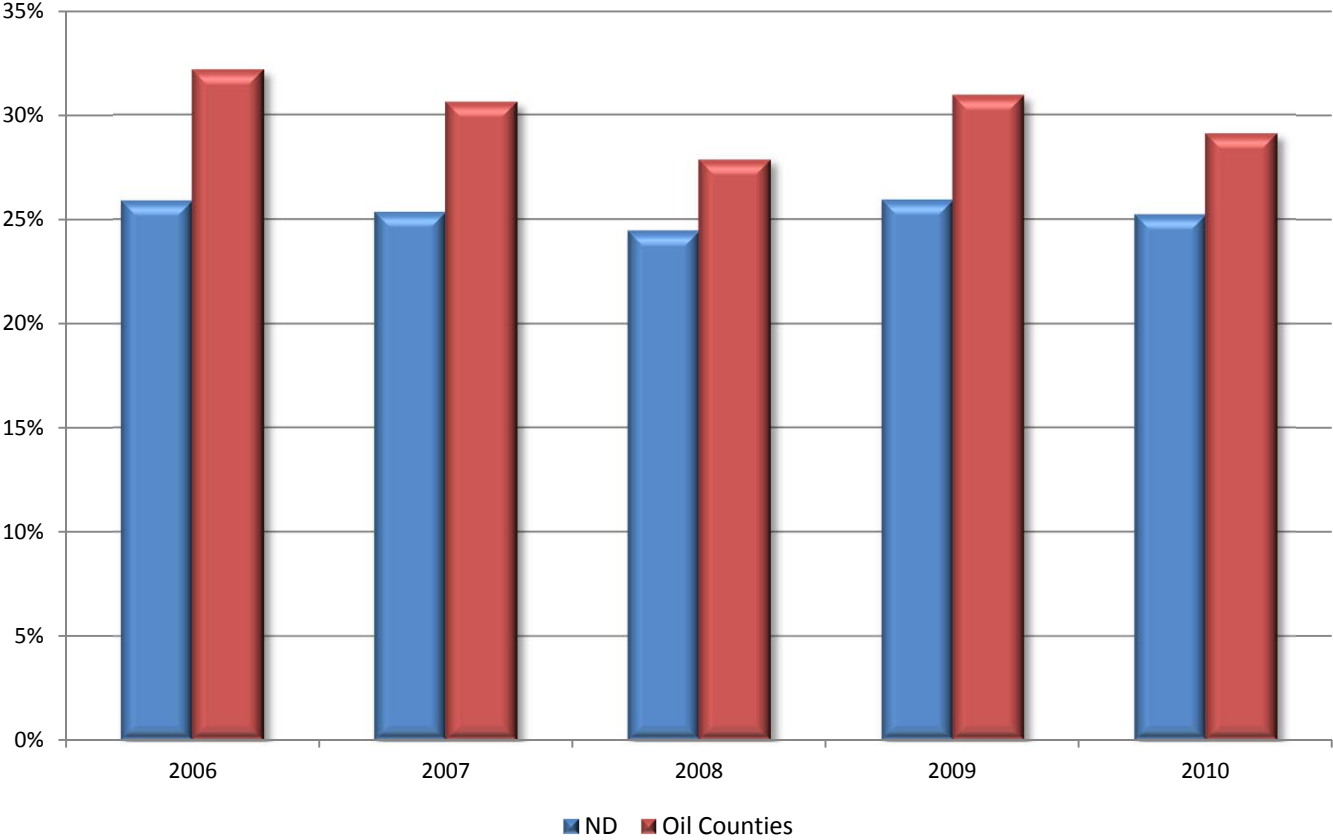


RURAL ROAD CRASH TYPES/FEATURES

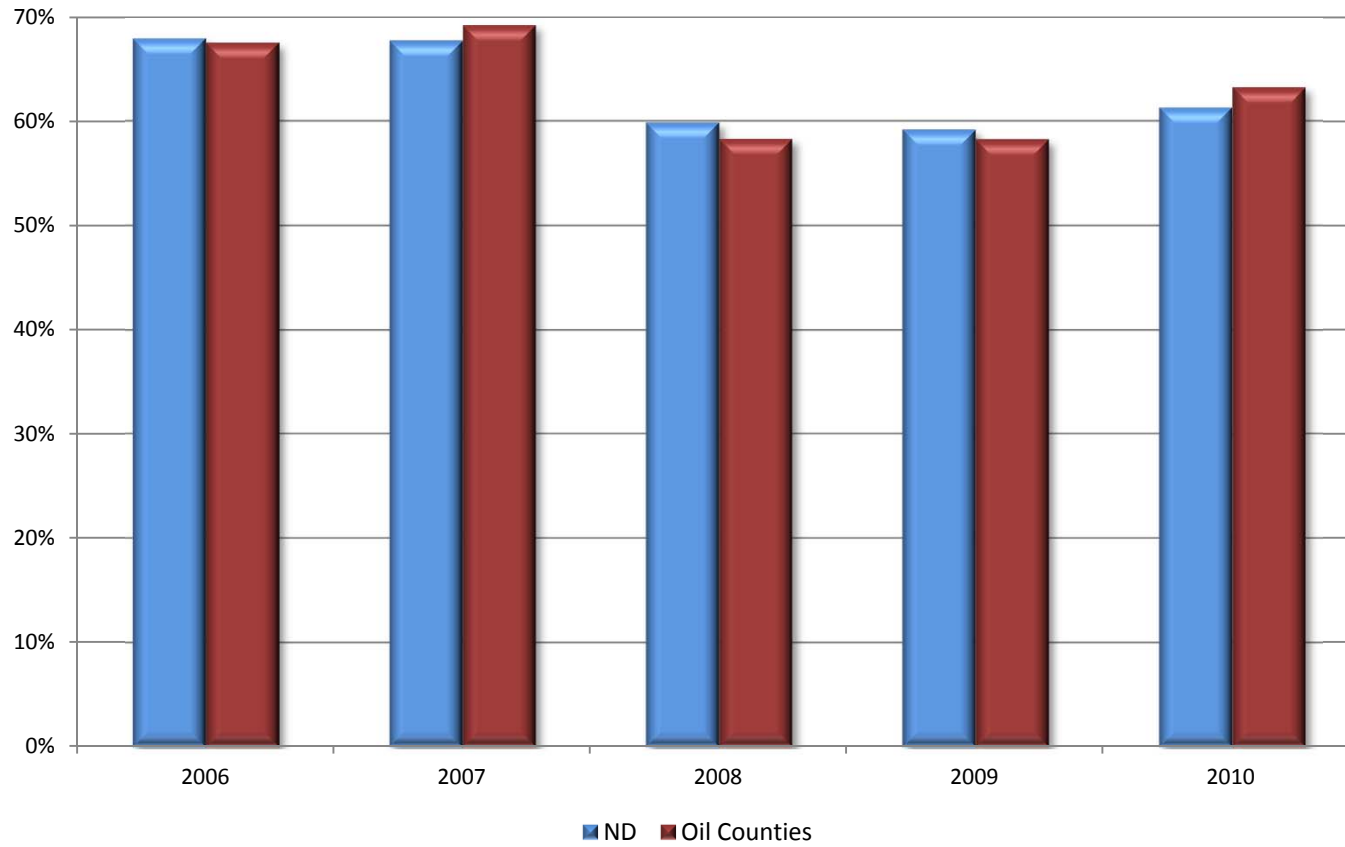
Oil Counties Crashes by Vehicle Type



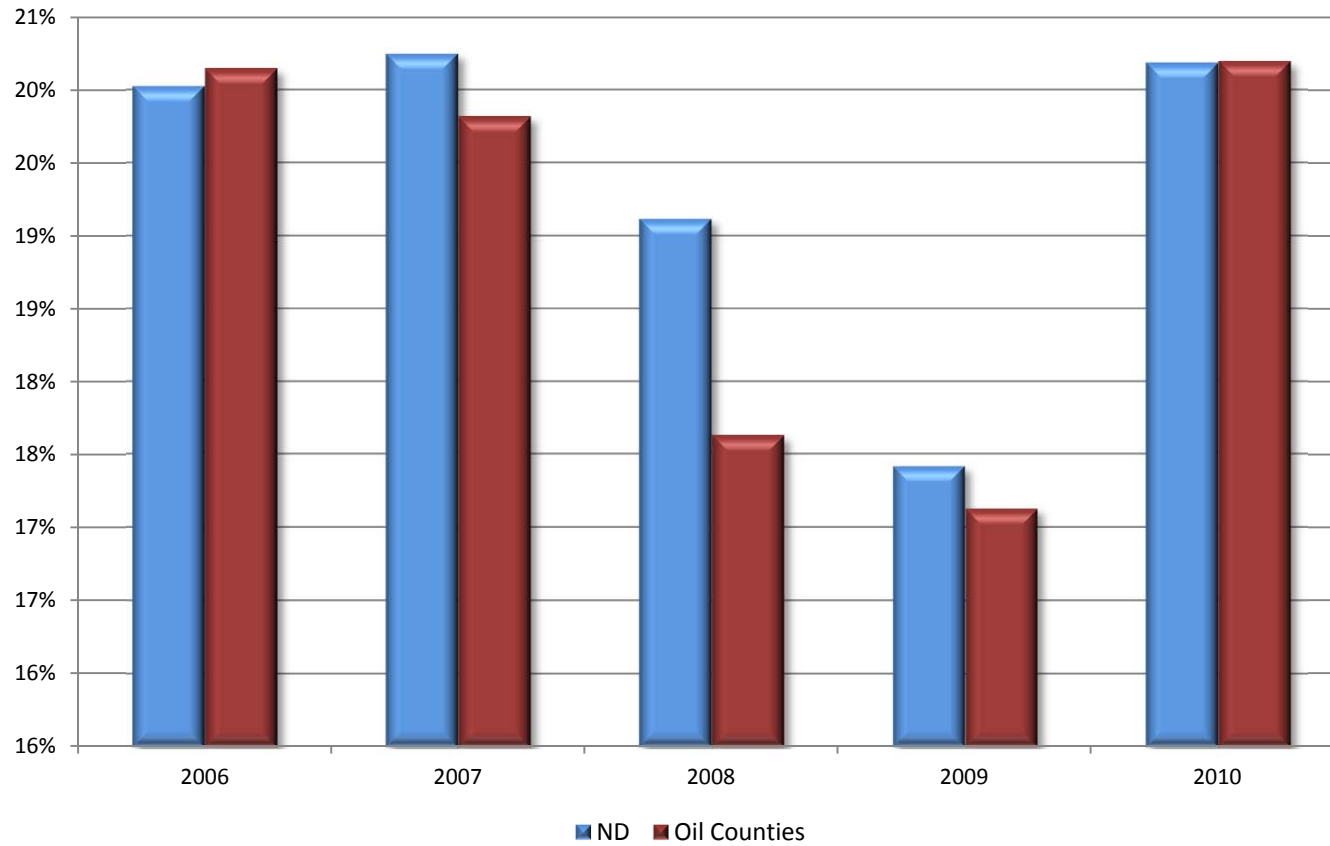
Percentage of Crashes Occurring on Hills



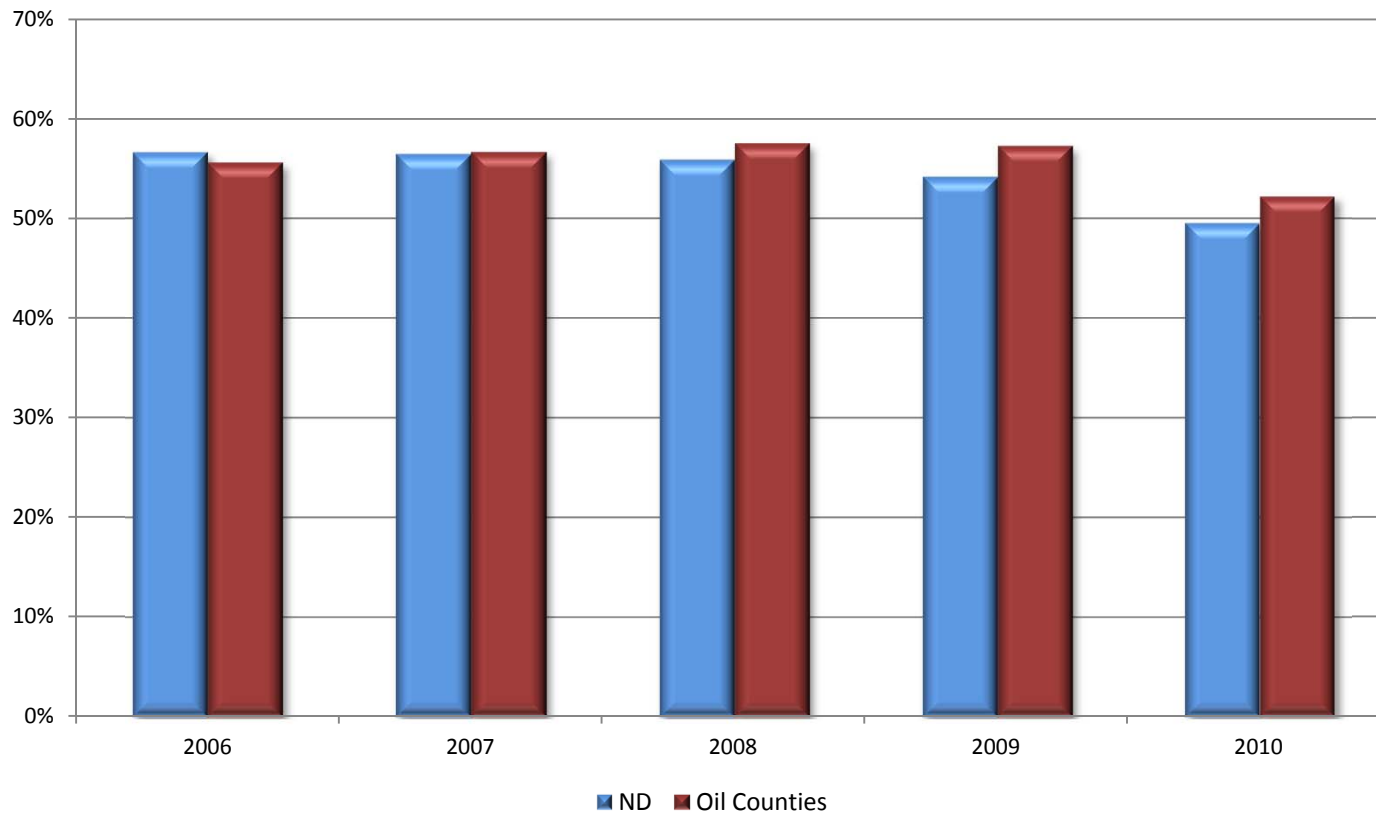
Percentage of Crashes Involving "Lane Departure" Incident



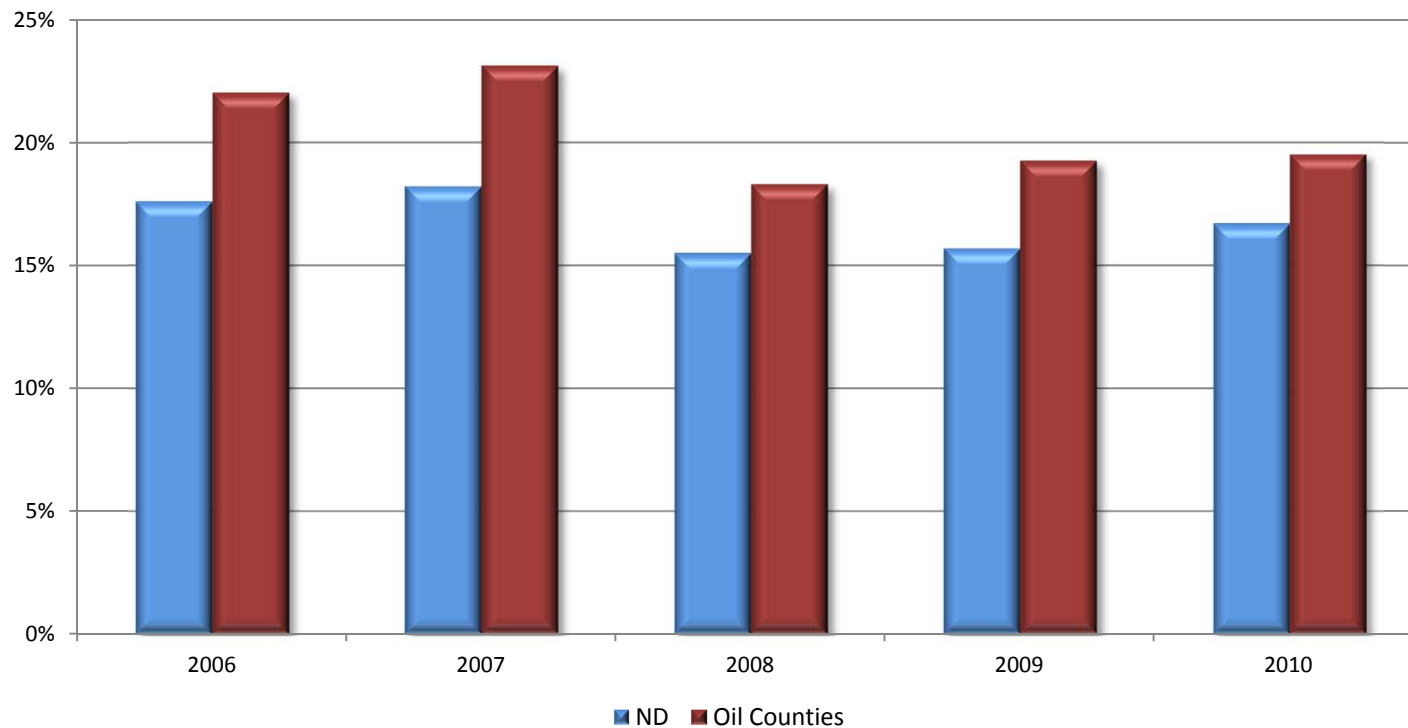
Percentage of Crashes Occurring at Intersections

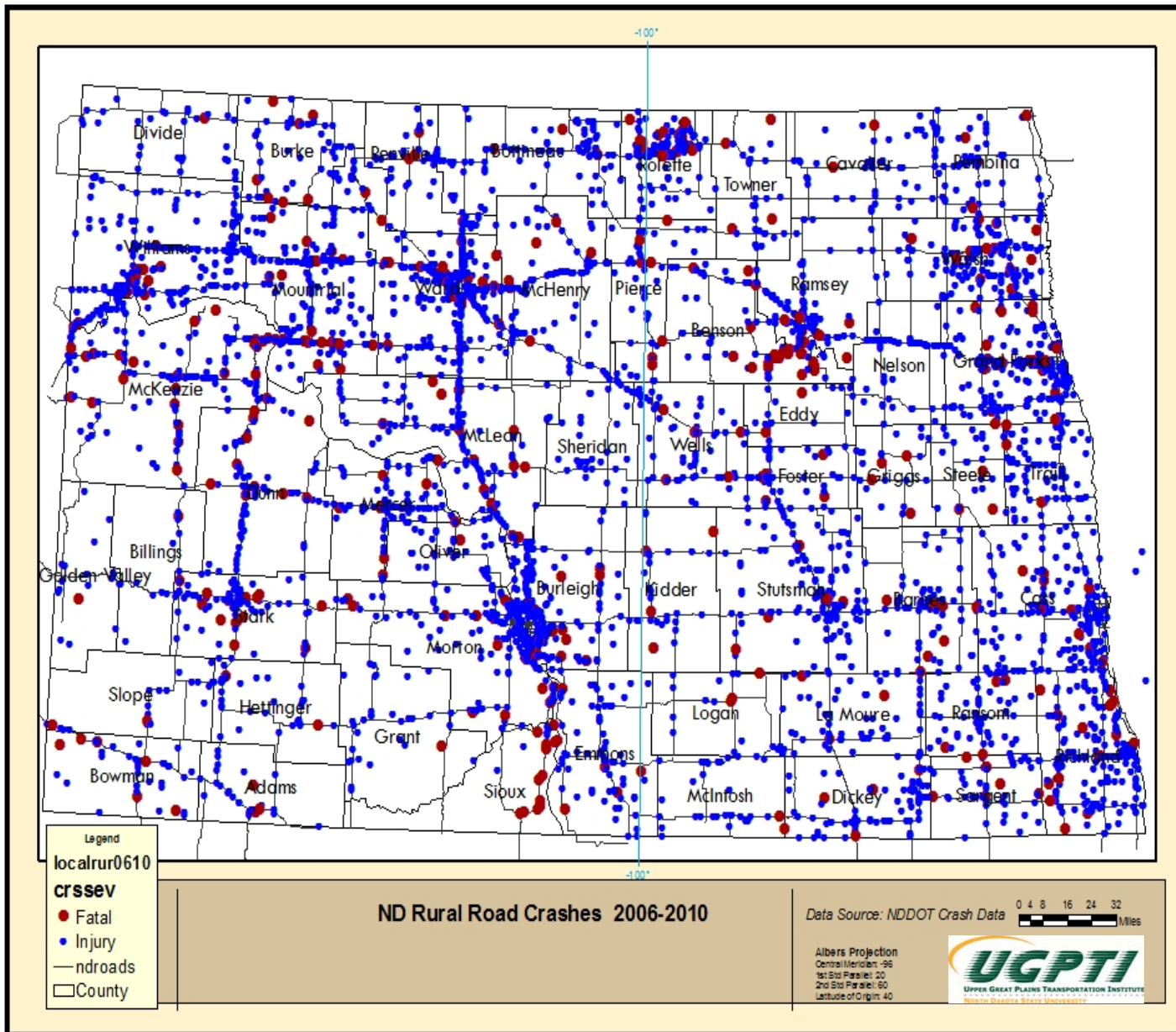


Percentage of Crashes Involving "Run off Road" Incident



Percentage of Crashes Occurring on Curves





Source: Data Summaries based on North Dakota Crash Data, 2006 to 2010, Traffic Safety Office, ND Department of Transportation