

UGPTI COUNTY ASSET INVENTORY TOOLKIT

County Webinar GRIT Viewer Release



Brad Wentz and Andrew Wrucke
Upper Great Plains Transportation Institute

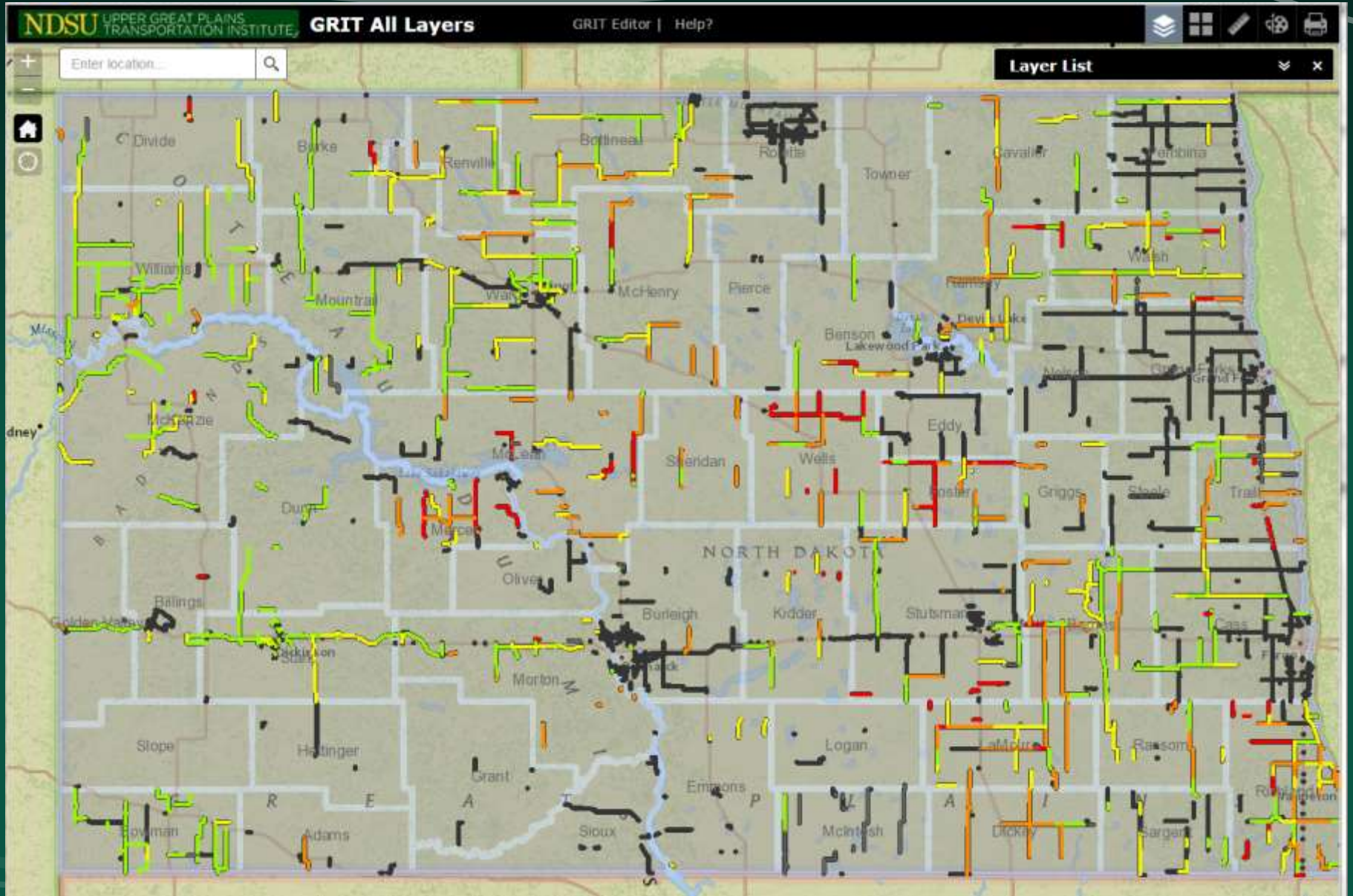
Today's Agenda

- Review GRIT Construction Status along with any common issues or changes
- Demonstration of GRIT Viewer – GIS web map for all data
- Discuss other data layers – such as load restrictions
- Questions (Type in chat box anytime)

GRIT Construction Status/issues

- Construction Status – great job!!
 - Almost all Counties have some data entered
 - Only 5 or 6 Counties have most of it to finish
 - Mostly age and thickness...need to finish others
- Issues and tips
 - Only one segment...no overlaps
 - Waypoints in order...how to delete
 - Use snapping...
 - Now that data is in...how to update

GRIT Construction Status/issues



GRIT Construction Status/issues

- Construction Status – great job!!
 - Almost all Counties have some data entered
 - Only 5 or 6 Counties have most of it to finish
 - Mostly age and thickness...need to finish others
- Issues and tips
 - Only one segment...no overlaps
 - Waypoints in order...how to delete
 - Use snapping...
 - Now that data is in...how to update

GRIT viewer demonstration

- Web map service available to anyone
- All GRIT layers included along with Needs Study data layers
- Can customize to show any data item.
- Works on any device
- Tools can be added
- Easy to use and help available
- Layer available as service to GIS clients

GRIT Other layers

- Load Restrictions/Owner
 - Some counties have completed
 - Complete all county roads
 - Draft load restriction map demo
- Minor Structures
 - A few counties started on this
- Working on Construction Planning
 - Layer for Planned Year, Bid Opening and actual const dates, Funding, etc...

Questions/Comments