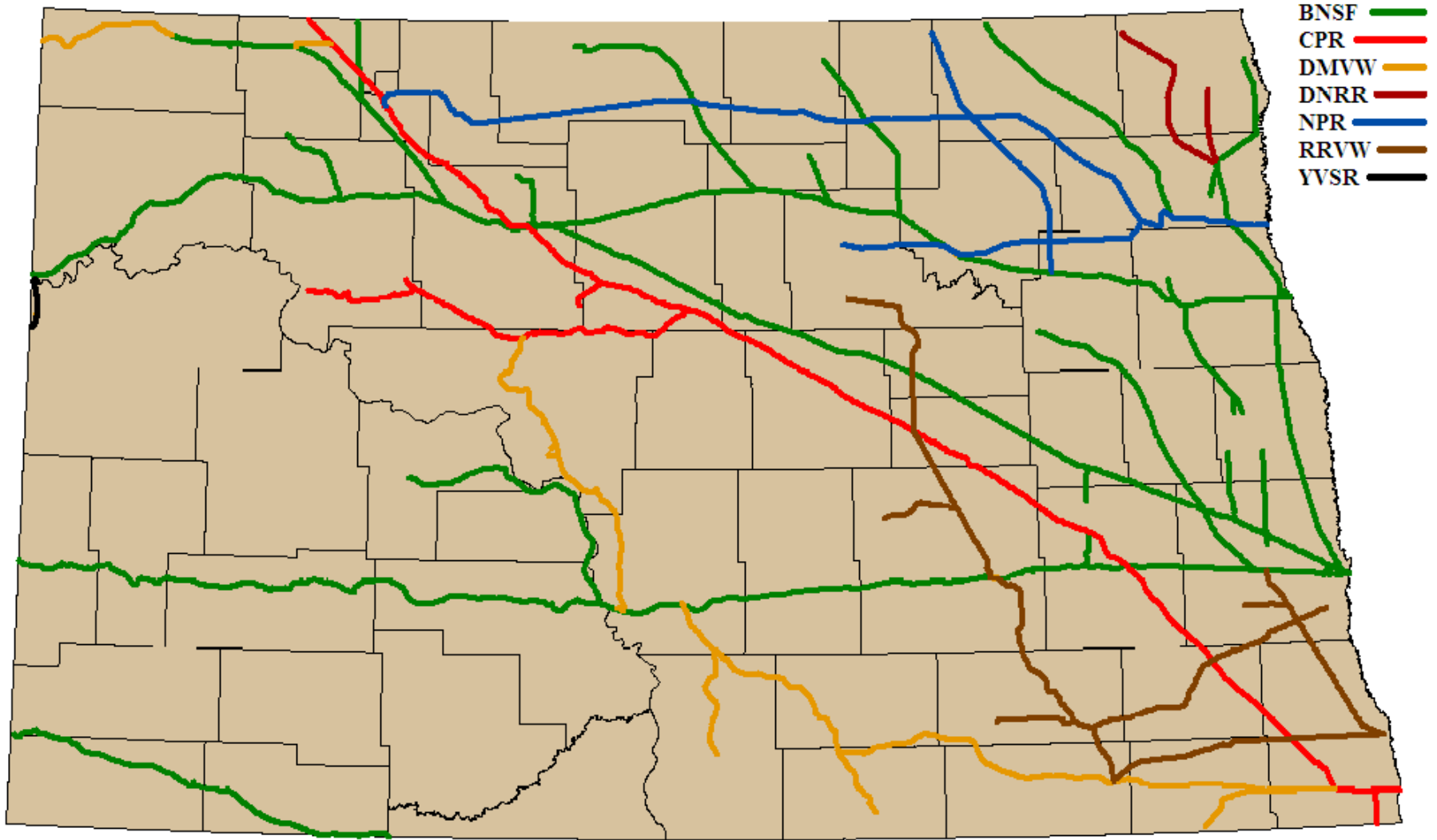


Upper Great Plains Transportation Institute  
North Dakota State University

# North Dakota Railroads Large & Small

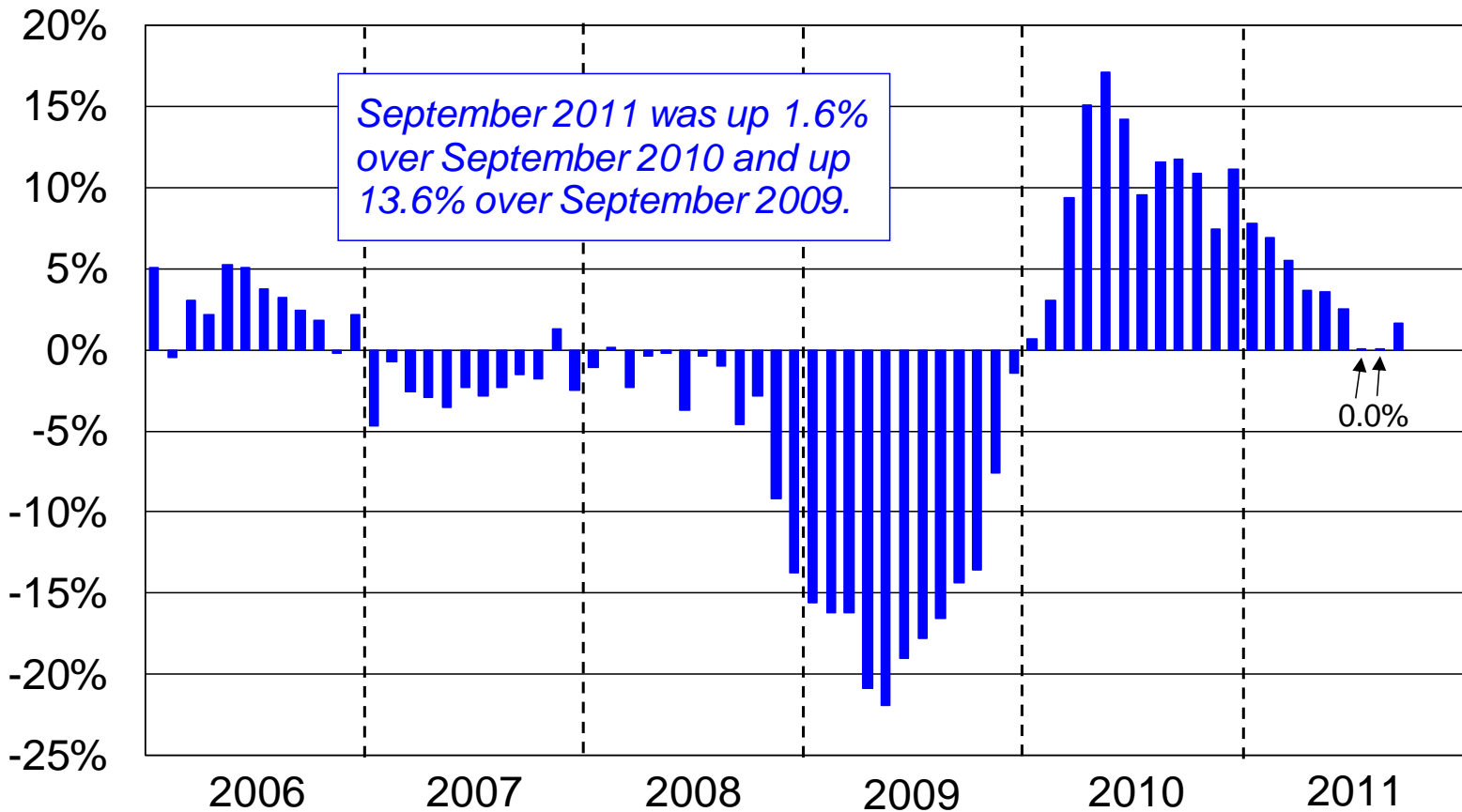
Dan Zink  
Red River Valley & Western Railroad Company

October 25, 2011



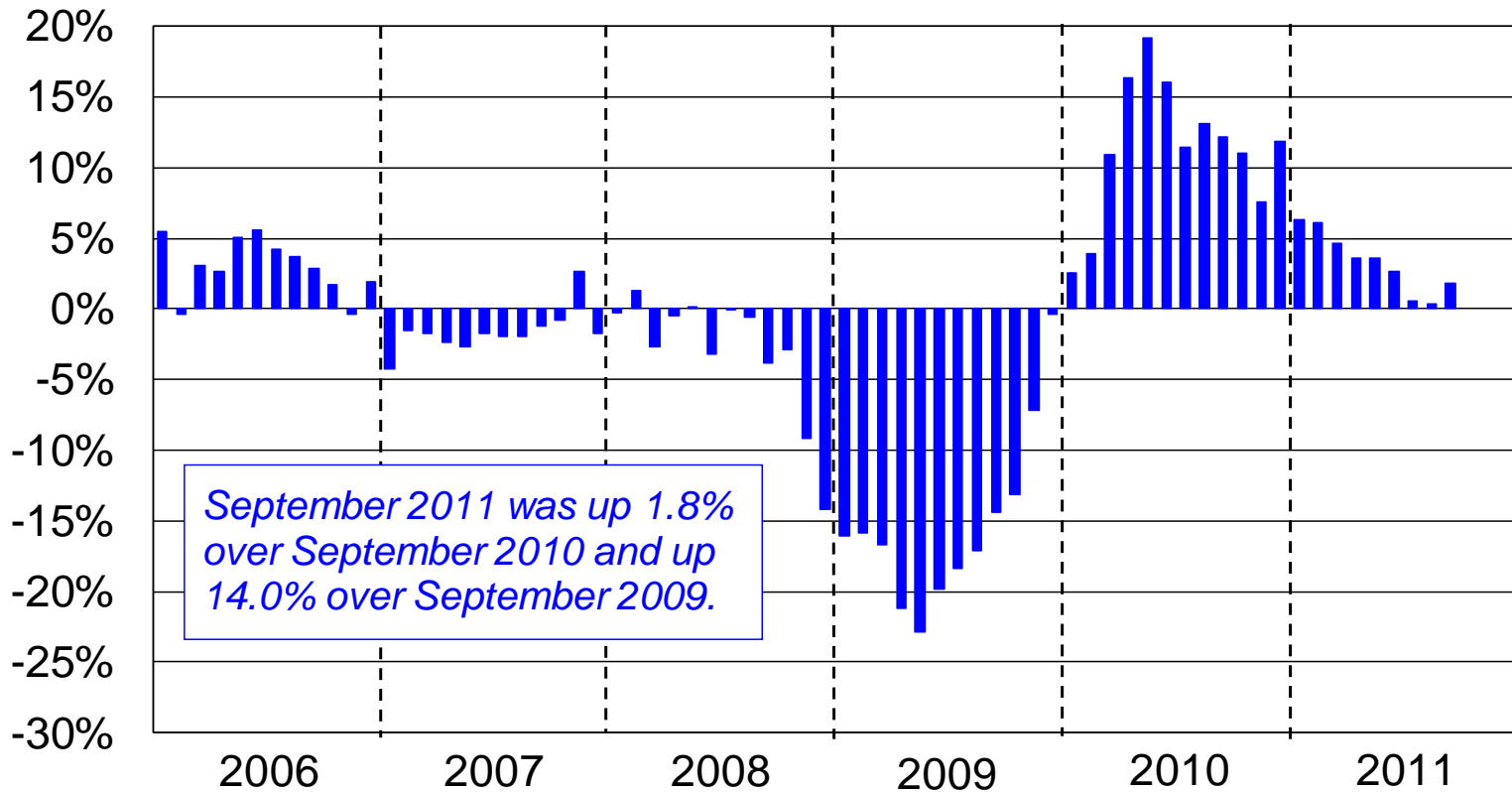
<b>Railroad</b>	<b>Main</b>	<b>Branch</b>	<b>Trackage Rights</b>	<b>Total Miles Operated</b>
BNSF	1,107	609	16	<b>1732</b>
CPR	353	121	8	<b>482</b>
DMVW	-	424	51	<b>475</b>
NPR	-	361		<b>361</b>
RRVW	-	453	87	<b>540</b>
DNRR	-	68		<b>68</b>
YSVR	-	9		<b>9</b>
<b>TOTAL</b>	<b>1,460</b>	<b>2,045</b>	<b>162</b>	<b>3,667</b>

# % Change in U.S. Rail Carloads + Intermodal Units From Same Month Prev. Year: Jan. 2006 - Sept. 2011



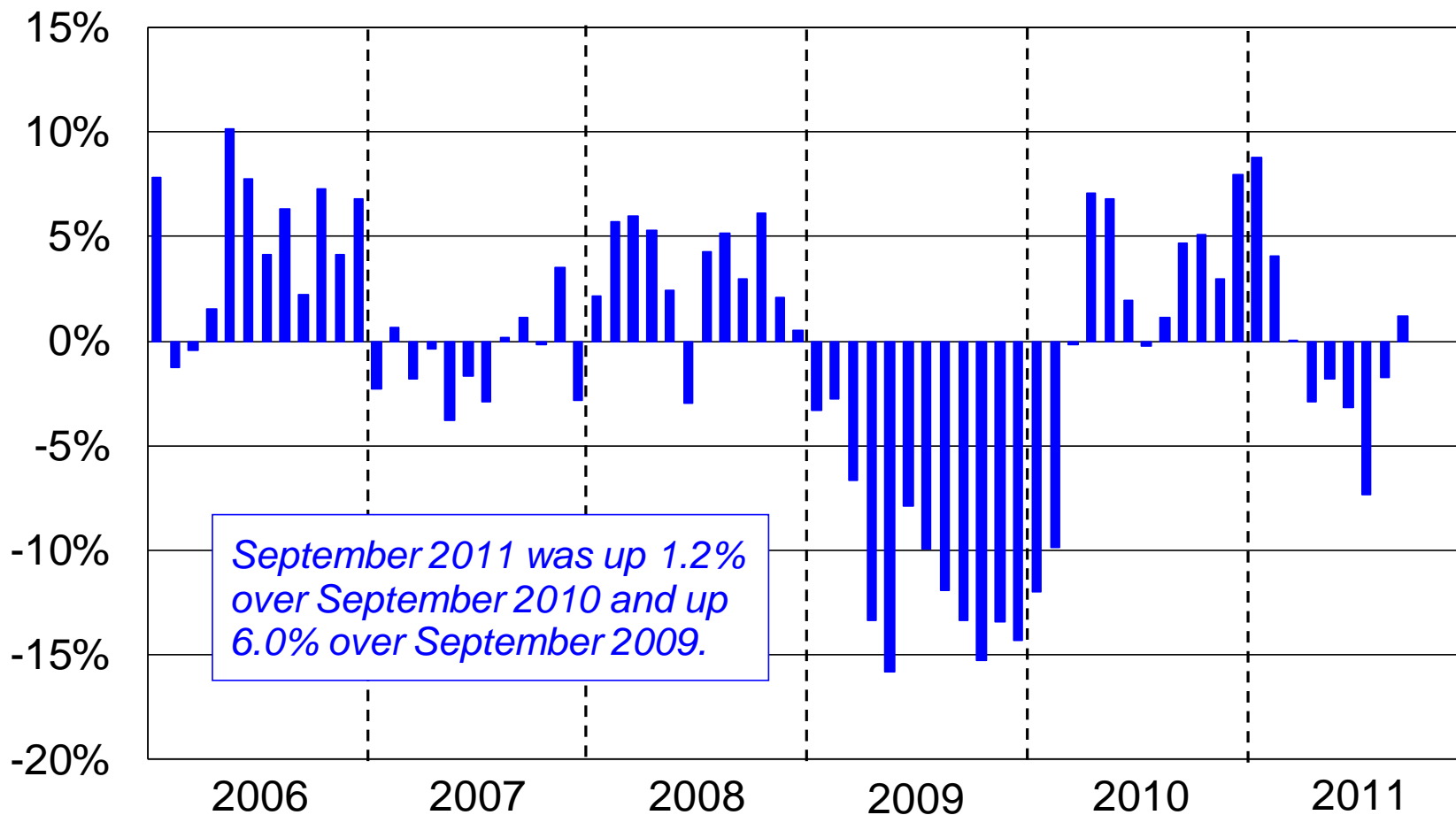
Data are based on originations, are not seasonally adjusted, exclude U.S. operations of CN and CP, and reflect revisions to original reporting. Source: AAR *Weekly Railroad Traffic*

# % Change in Combined U.S. + Canadian Rail Carloads + Intermodal Units From Same Month Prev. Year: January 2006 - September 2011



Data are weekly average originations for each month, are not seasonally adjusted, and reflect revisions to original reporting. Source: AAR *Weekly Railroad Traffic*

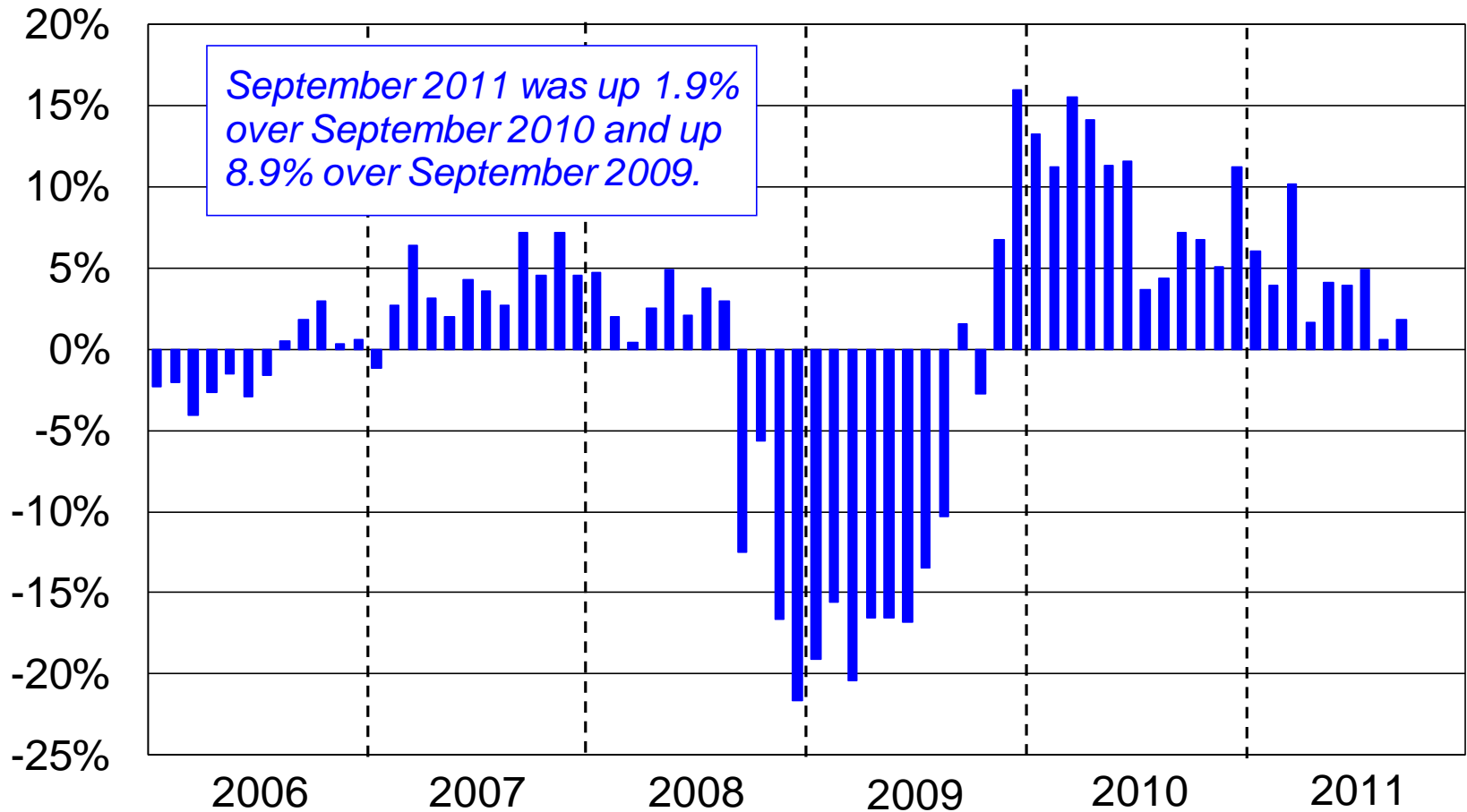
# % Change in U.S. Rail Carloads of Coal From Same Month Previous Year: Jan. 2006 - Sept. 2011



*September 2011 was up 1.2% over September 2010 and up 6.0% over September 2009.*

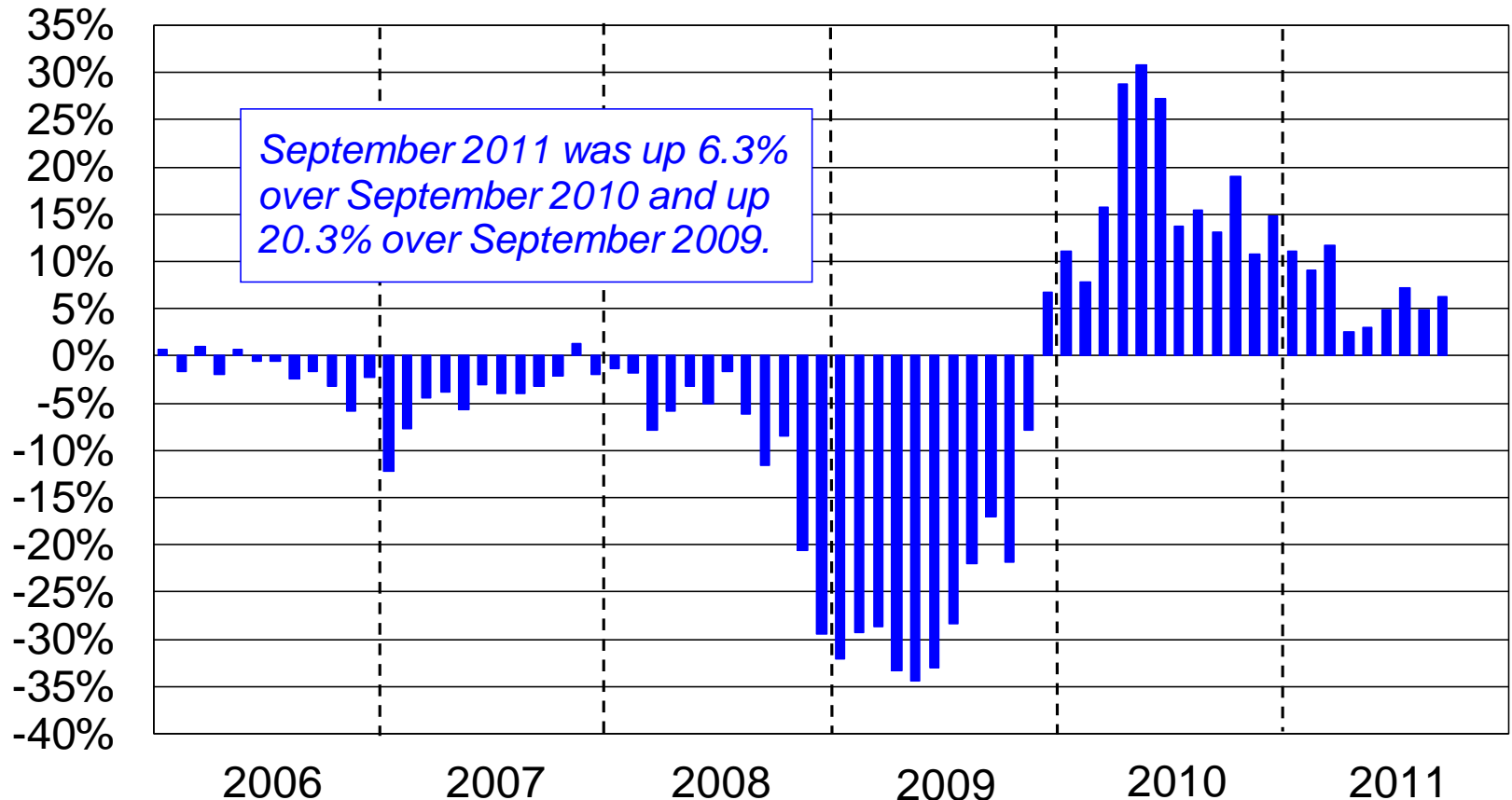
Data are based on originations, are not seasonally adjusted, exclude U.S. operations of CN and CP, and reflect revisions to original reporting. Source: AAR *Weekly Railroad Traffic*

# % Change in U.S. Rail Carloads of Chemicals From Same Month Previous Year: Jan. 2006 - Sept. 2011



Data are based on originations, are not seasonally adjusted, exclude U.S. operations of CN and CP, and reflect revisions to original reporting. Source: AAR *Weekly Railroad Traffic*

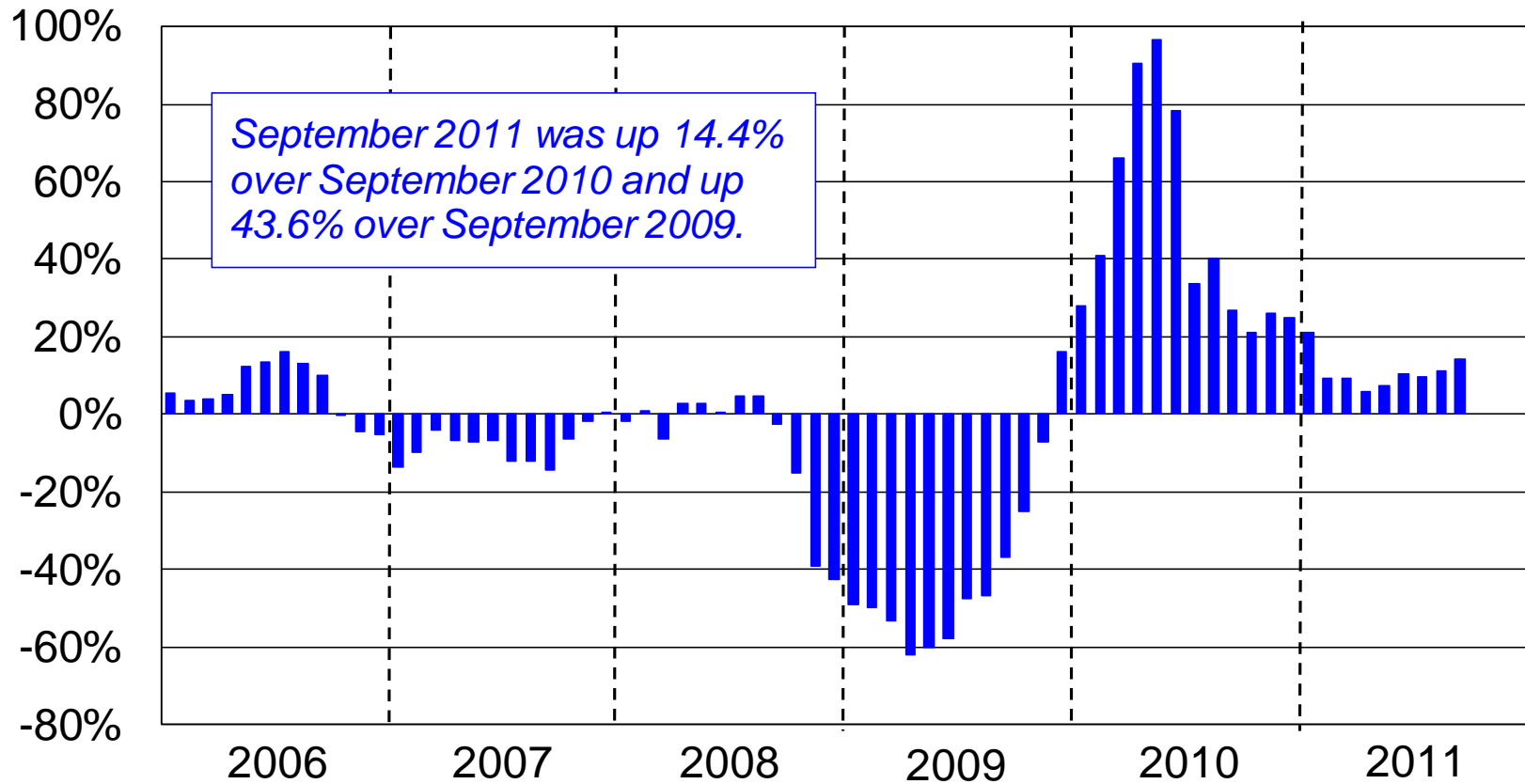
# % Change in U.S. Rail Carloads of Industrial Products From Same Month Prev. Year: Jan. 2006 - Sept. 2011\*



\*Data include chemicals; paper; metal products; autos; crushed stone and gravel; metallic ores; and stone and glass products. Data are weekly average originations for each month and exclude the U.S. operations of CN and CP. Source: AAR *Weekly Railroad Traffic*

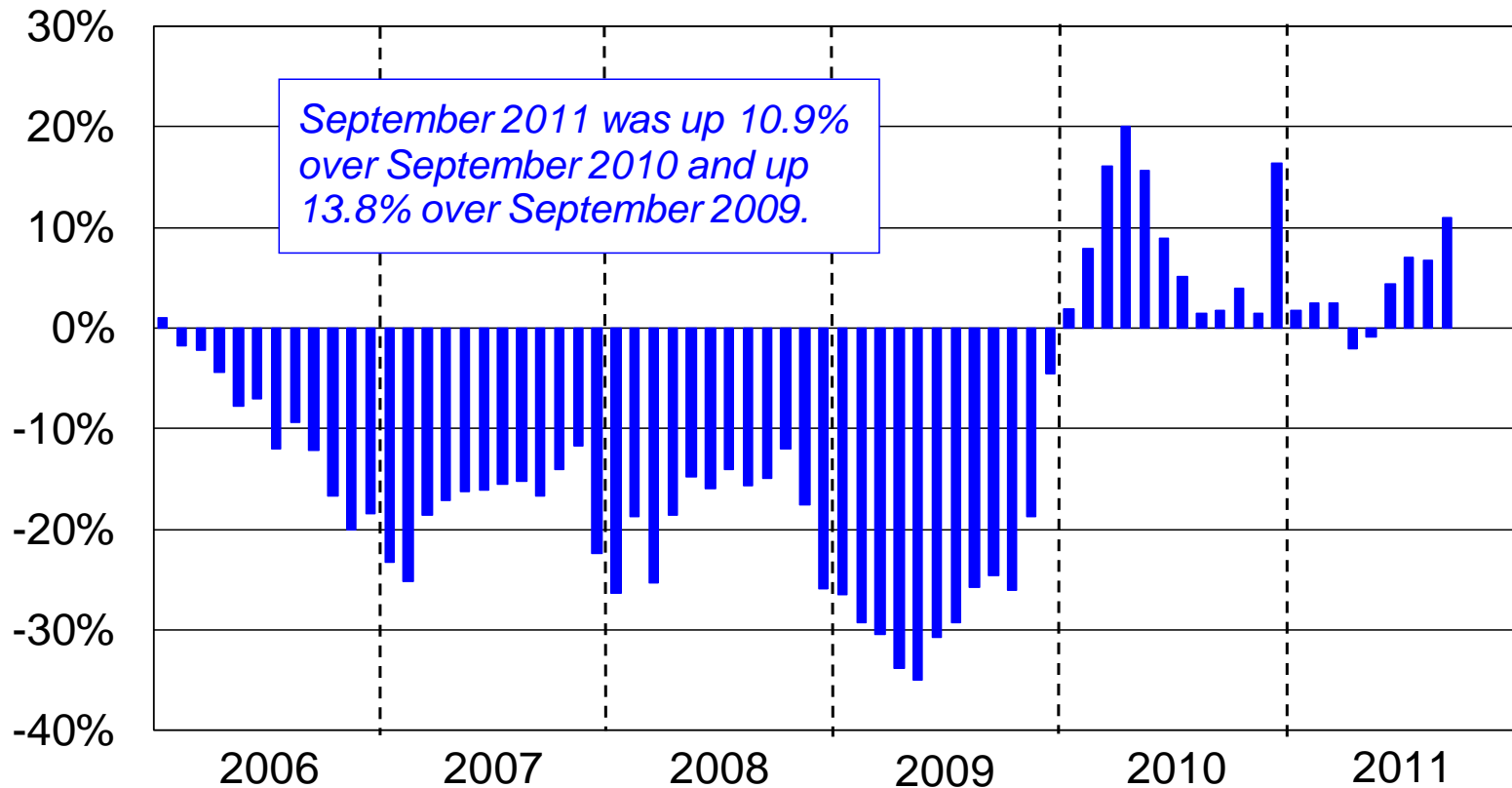


# % Change in U.S. Rail Carloads of Steel and Other Primary Metal Products From Same Month Previous Year: Jan. 2006 - Sept. 2011



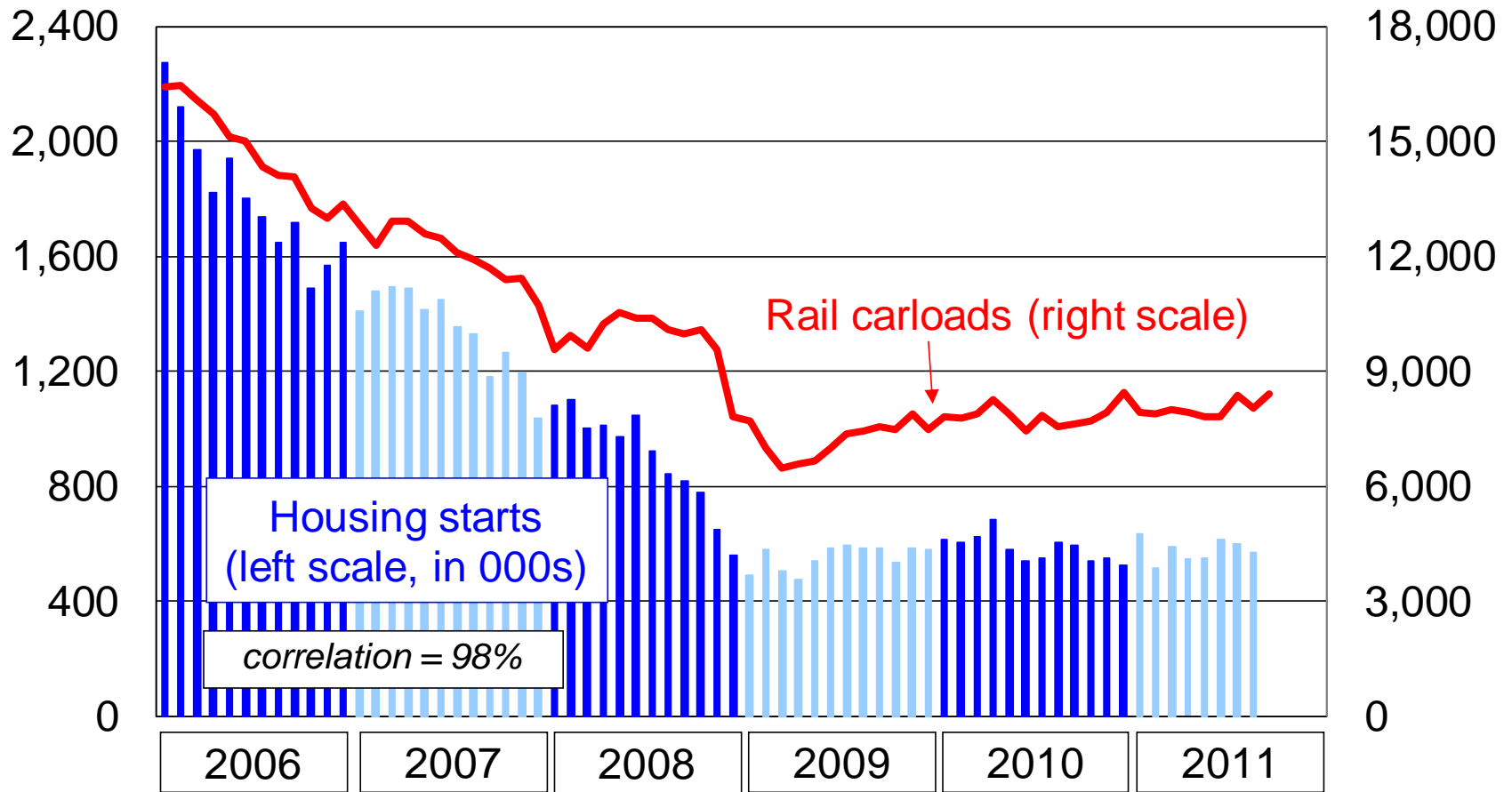
Data are based on originations, are not seasonally adjusted, exclude U.S. operations of CN and CP, and reflect revisions to original reporting. Source: AAR *Weekly Railroad Traffic*

# % Change in Combined U.S. + Canadian Rail Carloads of Lumber and Primary Forest Products From Same Month Previous Year: Jan. 2006 - Sept. 2011



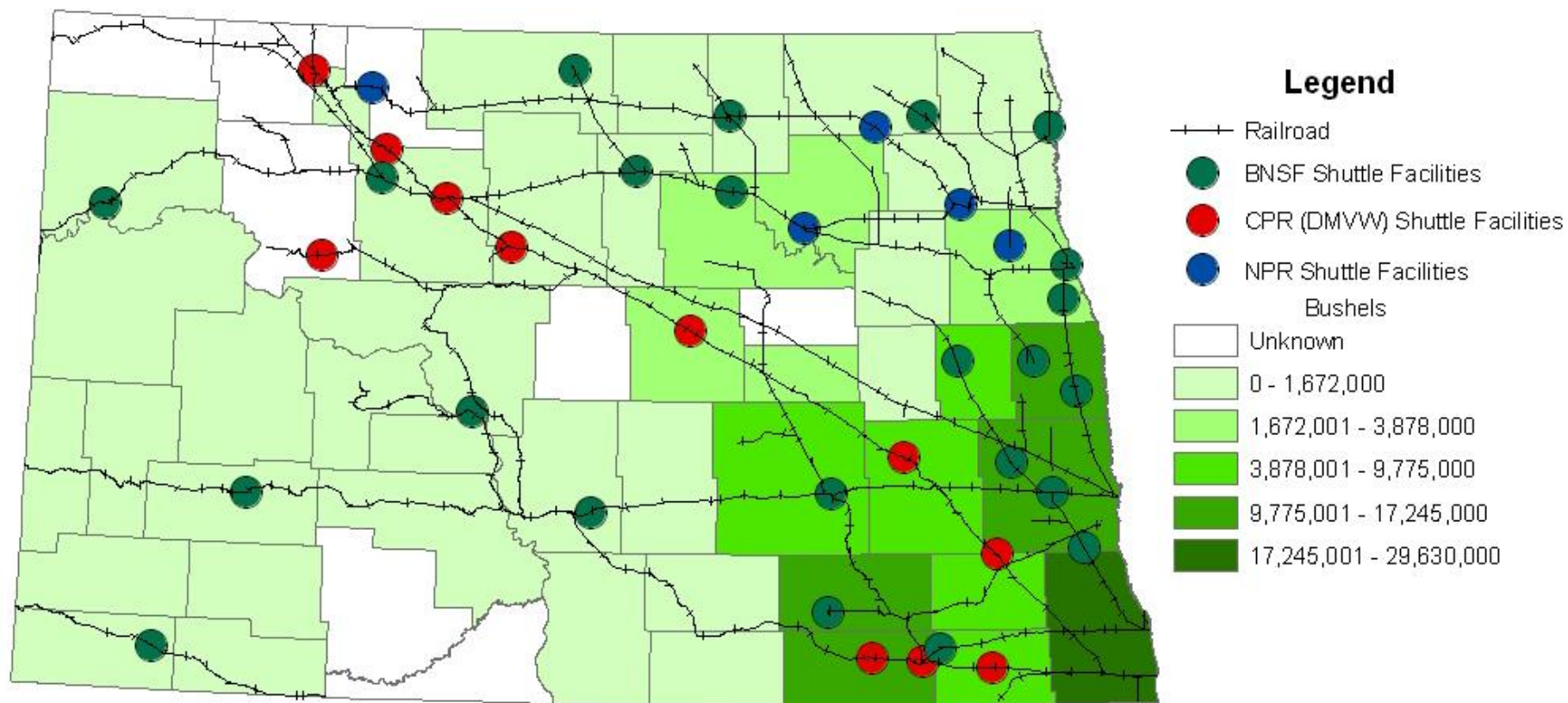
Data are weekly average originations for each month, are not seasonally adjusted, and reflect revisions to original reporting. Source: AAR *Weekly Railroad Traffic*

# U.S. Housing Starts vs. U.S. + Canadian Rail Carloads of Lumber, Wood & Forest Products

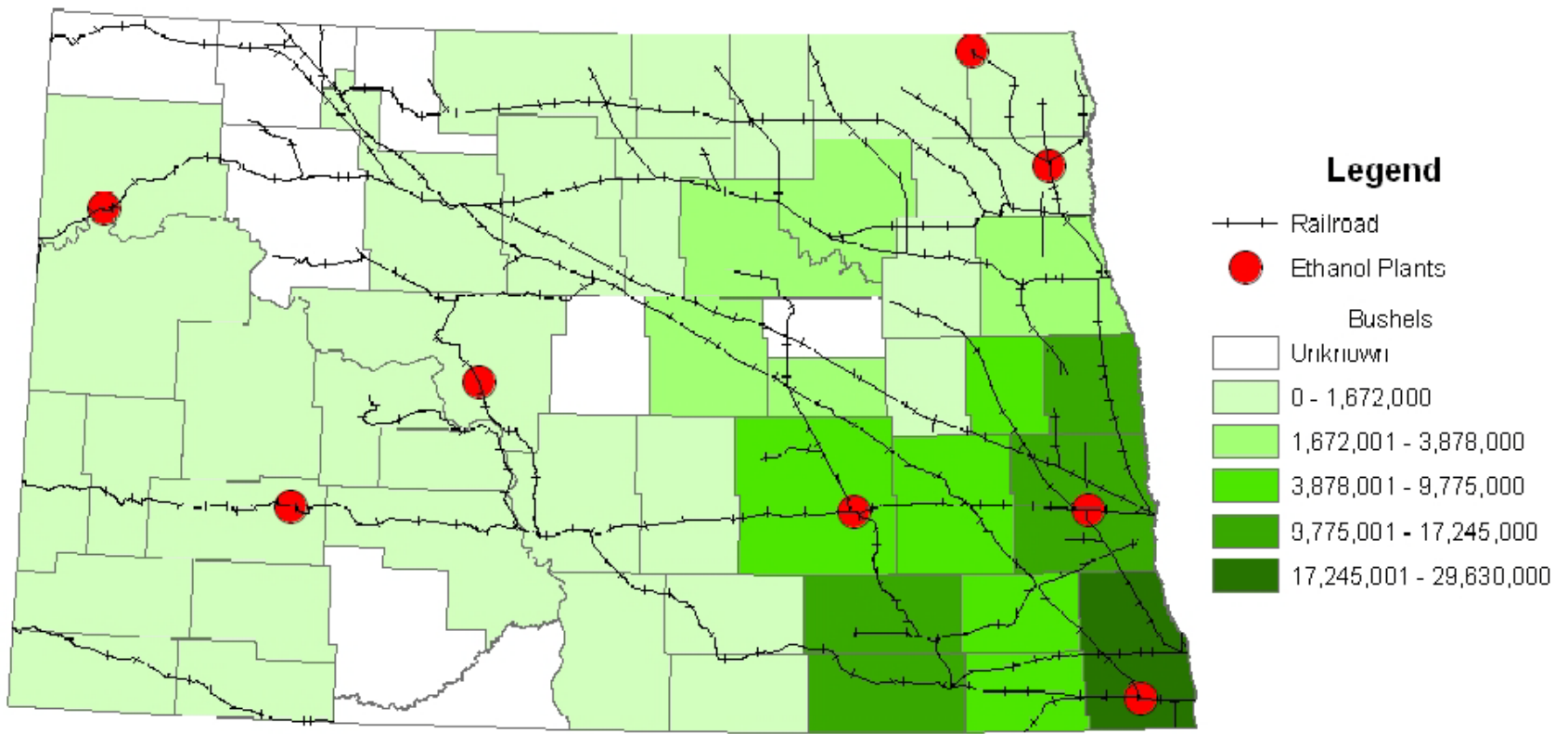


Data are seasonally adjusted. Housing starts are monthly figures annualized. Rail carloads are average weekly originations for the month and include Canadian traffic. Source: AAR, Census Bureau

# North Dakota Shuttle Elevator Locations and 2006 Corn Production in Bushels



# North Dakota Ethanol Plant Locations and 2006 Corn Production in Bushels





RRV&W 113

THE GLANT  
EST. 1911





















































30













# Recession

- Stored Cars
- Traffic Levels
  - Fuel

# Crossings

- Quiet Zones
  - Diversion
    - Horace
- 2 – BNSF Crossings
  - Dilworth Yard